

MAXIMUM[®] MD

PROFESSIONAL GRADE

28" (71.3 cm) 2-Door Base Cabinet with Castors and Stainless Steel Doors



Model no. 068-1808-4

IMPORTANT

Please read this manual carefully before assembling and using this product, and save it for reference.

INSTRUCTION MANUAL

Due to continuing improvements, the actual product may differ slightly from the product described herein.

TABLE OF CONTENTS

SAFETY	3
EXPLODED VIEW / PARTS LIST	4
ASSEMBLY INSTRUCTIONS	5
COORDINATING PRODUCTS	11
MAINTENANCE	11
WARRANTY	12

NOTE

If any parts are missing or damaged, or if you have any questions, please call our toll-free helpline at: 1-888-670-6682. Have the product number, cash register receipt and the date of purchase available when you call. **DO NOT SHIP YOUR PRODUCT BACK TO THE STORE UNLESS WE SEND YOU WRITTEN INSTRUCTIONS FOR RETURN.**



SAVE THESE INSTRUCTIONS

This manual contains important safety and operating instructions. Read all instructions and follow them carefully with use of this product.

SAFETY

To reduce the risk of serious injury, read and follow the safety instructions below before assembling and using this product.

- This product is intended for indoor use only.
- This product is not designed for commercial nor industrial usage.
- Keep the product on level surfaces. The product could become unstable and it may tip over if stored or moved on an uneven surface, which may cause personal injury, death or product damage.
- Any assembly or maintenance of the cabinet must be carried out by adults only.
- Use at least two people to move, assemble or install this cabinet. Failure to do so can result in personal injury or product damage.
- Check all nuts and bolts periodically for tightness. When required, tighten them.
- Close and lock the doors before moving this cabinet.
- DO NOT alter this product in any manner. For example, do not weld external bar locks or attach electrical equipment. This may cause product damage or personal injury.
- DO NOT exceed the following weight limits for this product.
 - Maximum load: 472 lb (214 kg)
 - Maximum load for shelf: 150 lb (68 kg)
 - Maximum load for bottom panel: 150 lb (68 kg)
 - Maximum load for rubberwood top: 150 lb (68 kg)
 - Maximum load for each door: 11 lb (5 kg)

⚠ WARNING



Children have died from furniture tipover. To reduce the risk of furniture tipover:

- ALWAYS install anti-tip device provided.
- NEVER put a TV on this product.
- NEVER allow children to stand, climb or hang on drawers, doors, or shelves.
- NEVER open more than one drawer at a time.
- Place heaviest items in the lowest drawers.



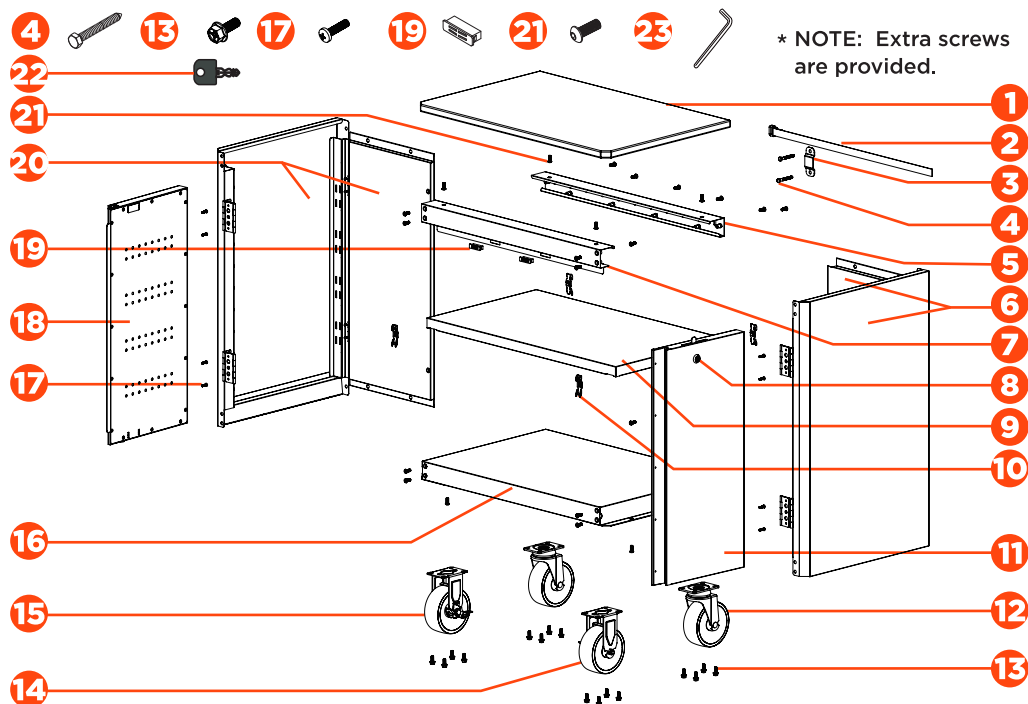
*This is a permanent label.
Do not remove!*



- Before assembling and using this product, carefully read this instruction manual and all of the labels affixed to the product. Failure to follow all warnings and instructions may result in product damage or personal injury.
- Save all warnings and instructions for future reference.

EXPLODED VIEW / PARTS LIST

No.	Description	Part No.	Qty.	No.	Description	Part No.	Qty.
1	Rubberwood top	307082	1	13	M6 x 16 hex flange bolt *	321006	16
2	Safety strap	314230	1	14	Rigid castor (R)	302280	1
3	Safety bracket	212591	1	15	Rigid castor (L)	302281	1
4	M6 x 40 hex tapping bolt	320328	2	16	Bottom panel	124194	1
5	Back top beam	124192	1	17	M4 x 16 cross-head pan head screw	320362	4
6	Combination of right side and back panels	124545	1	18	Left door	124173	1
7	Front top beam	124193	1	19	Magnet	312033	2
8	Lock (001-010)	304075	1	20	Combination of left side and back panels	124546	1
9	Shelf	245787	1	21	M6 x 16 hex socket head screw *	320327	30
10	Shelf bracket	243311	4	22	Key (001-010)	304196	2
11	Right door	124198	1	23	Hex wrench	317035	1
12	Swivel castor	302201	2				



NOTE

- Replacement keys may be ordered. Call our toll-free number. The code which appears on the lock will be required.
- Give information for spare parts: part number and quantity required.

ASSEMBLY INSTRUCTIONS

TOOLS REQUIRED FOR ASSEMBLY

- Hex wrench (23)
- Power drill (not included)
- Measuring tape (not included)

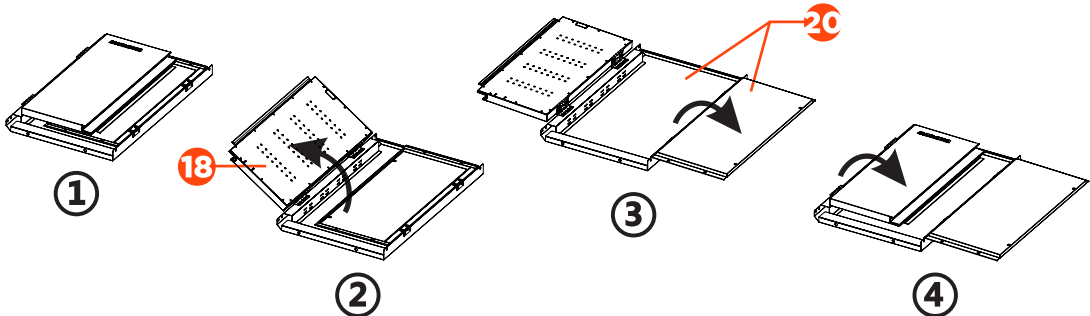
NOTE: Assemble on a flat surface. A piece of cardboard is recommended to keep the product from being scratched during assembly.



WARNING: Please wear gloves during the whole assembly process.

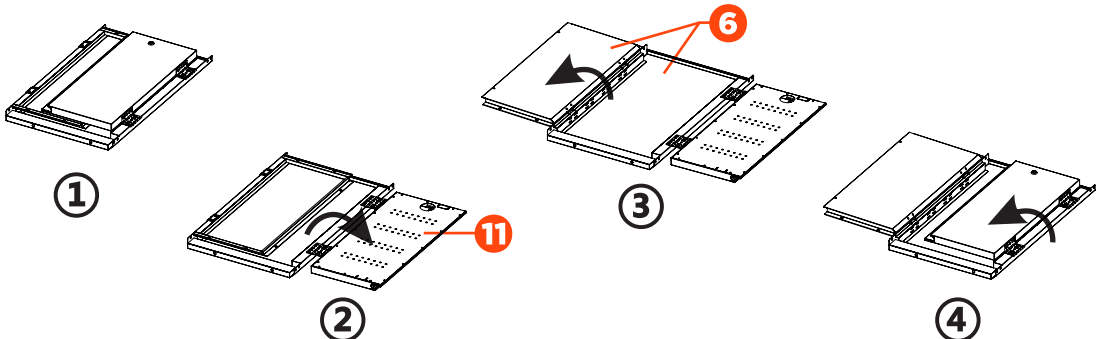
STEP 1 TURN THE LEFT BACK PANEL OUT

- Take out the left door set (18 and 20) with MAXIMUM® logo as shown in illustration 1.
- Open the left door (18) and turn the left back panel (20) out as shown in illustrations 2 and 3.
- Close the left door (18) back as shown in illustration 4.



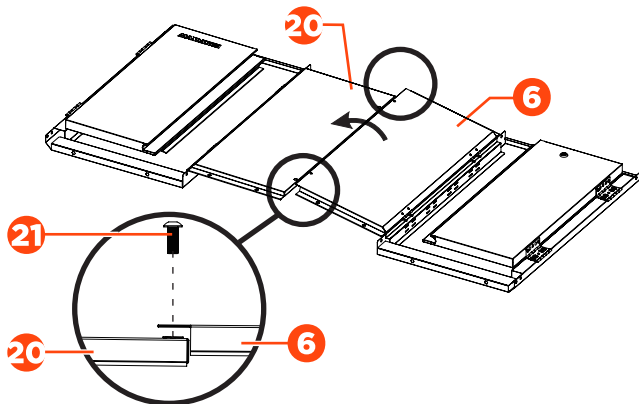
STEP 2 TURN THE RIGHT BACK PANEL OUT

- Take out the right door set (6 and 11) with the lock as shown in illustration 1.
- Open the right door (11) and turn the right back panel (6) out as shown in illustrations 2 and 3.
- Close the right door (11) back as shown in illustration 4.



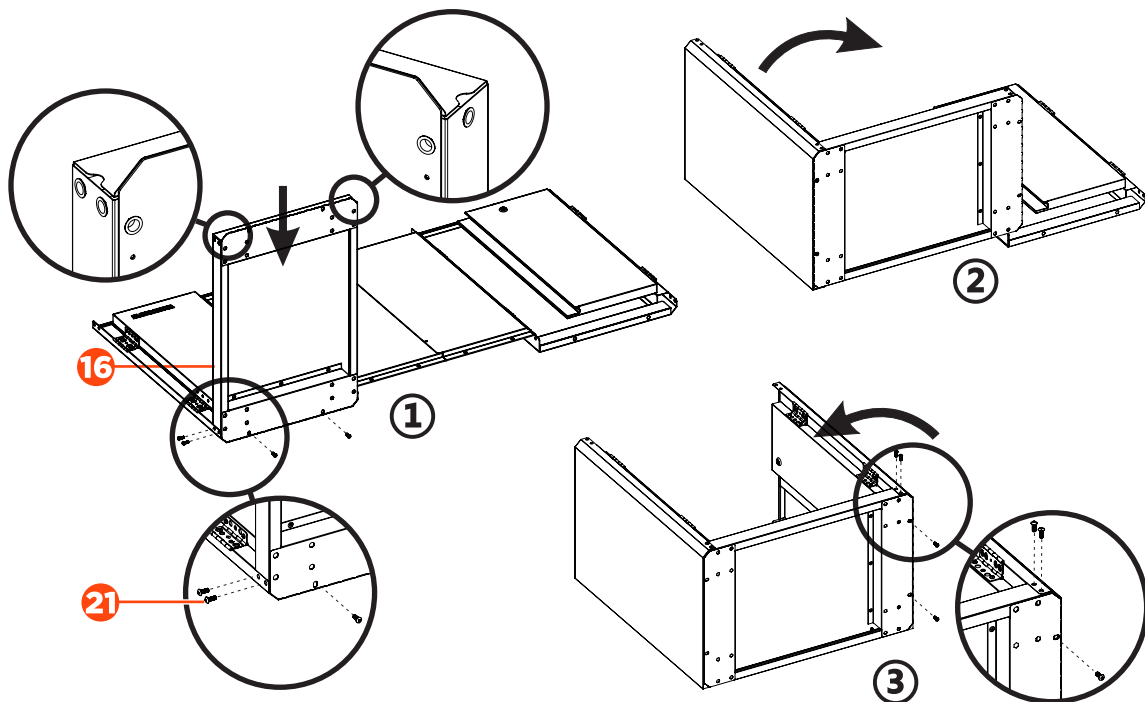
STEP 3 CONNECT THE BACK PANELS

Hold up both back panels (6 and 20) and make them horizontal. Attach them with two M6 x 16 hex socket head screws (21). Tighten screws only by hand.



STEP 4 CONNECT THE BOTTOM PANEL AND SIDE PANELS

- Attach the bottom panel (16) to the left side panel (20) with four M6 x 16 hex socket head screws (21) as shown in illustration 1. Tighten securely.
- Flip the bottom panel (16) and left side panel (20) by 90° as shown in illustration 2.
- Flip up the right door set. Connect the right side panel (6) and bottom panel (16) with four M6 x 16 hex socket head screws (21) as shown in illustration 3. Tighten securely.

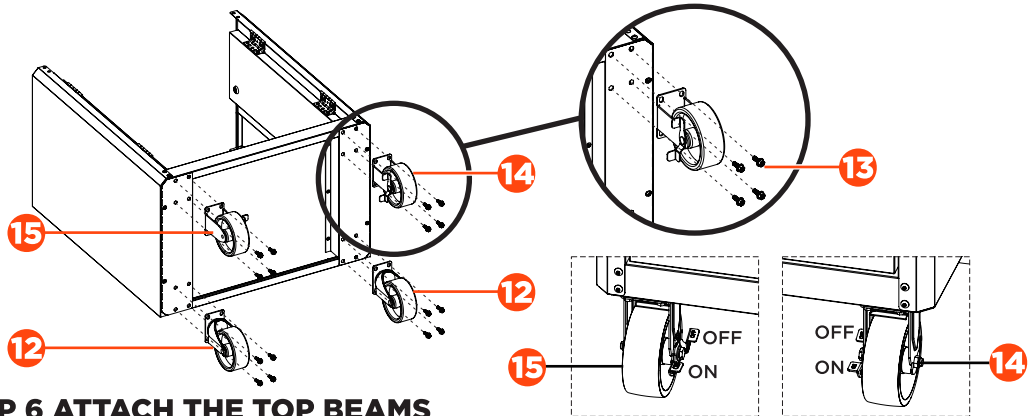


STEP 5 INSTALL THE CASTORS

NOTE: Make sure the brakes of the rigid castors (14 and 15) face towards the inside of the base cabinet.

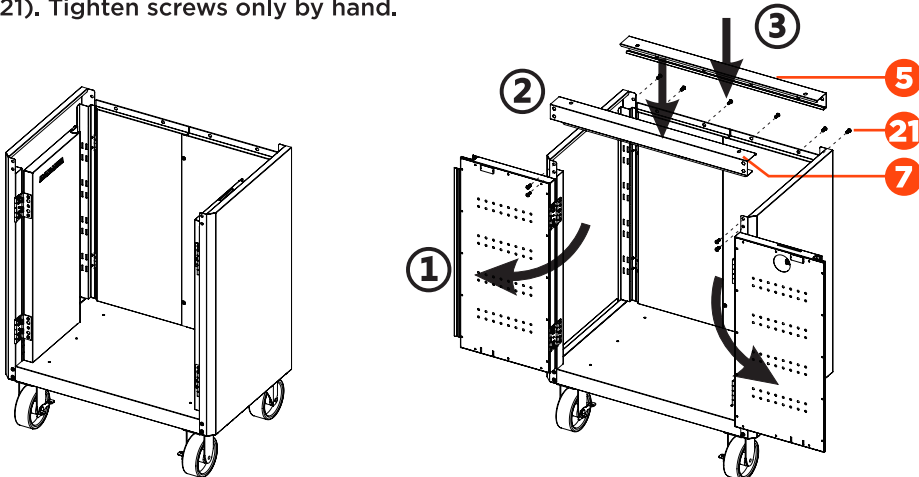
NOTE: For easy manoeuvrability, make sure the lettering "ON" on the brakes is facing towards the front of the cabinet.

- Position the two swivel castors (12) on the back side of the base cabinet. Insert eight M6 x 16 hex flange bolts (13) through the castors and into the bottom of the base cabinet. Tighten securely.
- Repeat the same procedure to install the two rigid castors (14 and 15) on the front side of the base cabinet. The brakes of the rigid castors (14 and 15) should face towards the inside of the base cabinet.



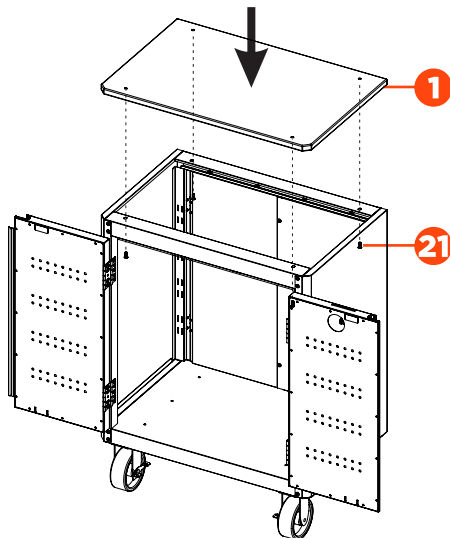
STEP 6 ATTACH THE TOP BEAMS

- Stand up the cabinet.
- Open the doors first. Attach the front top beam (7) to the side panels with four M6 x 16 hex socket head screws (21). Tighten screws only by hand.
- Attach the back top beam (5) to the side panels with six M6 x 16 hex socket head screws (21). Tighten screws only by hand.



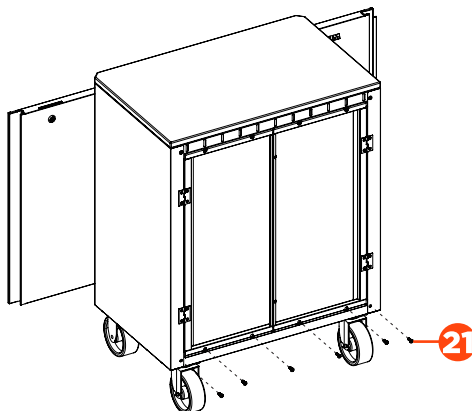
STEP 7 ATTACH THE RUBBERWOOD TOP

Attach the rubberwood top (1) to the cabinet top by inserting four M6 x 16 hex socket head screws (21) through the pre-drilled holes from underneath. Tighten securely.



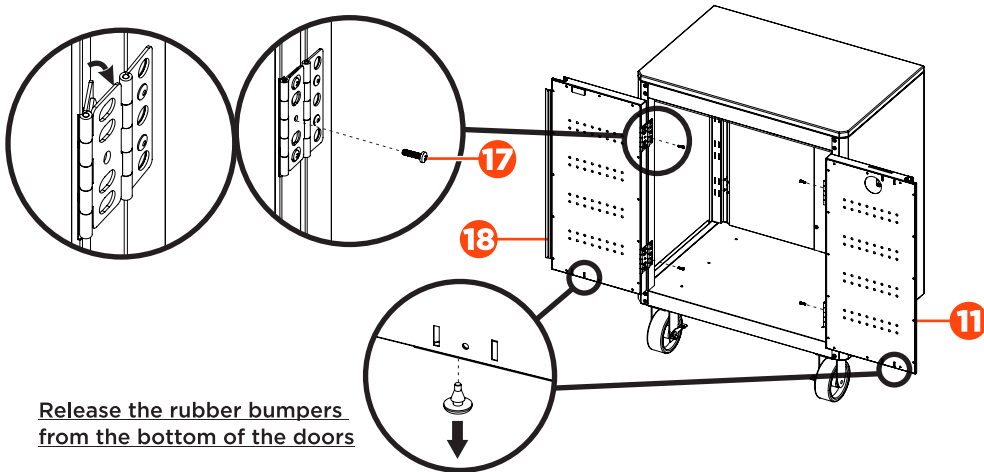
STEP 8 FIX THE BACK PANELS

Fix the back panels at the back with six M6 x 16 hex socket head screws (21). Tighten screws only by hand.



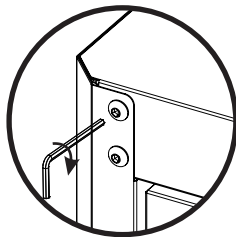
STEP 9 FIX THE HINGES

- Fully open the left door (18) 180° and make sure both hinges are fully extended.
- Push the door inward horizontally to make sure two flaps of each hinge are overlapped. Secure them with two M4 x 16 cross-head pan head screw (17), one for each hinge.
- Repeat the same procedure to fix the hinges at the right door (11).
- Release the rubber bumpers from the bottom of the doors.

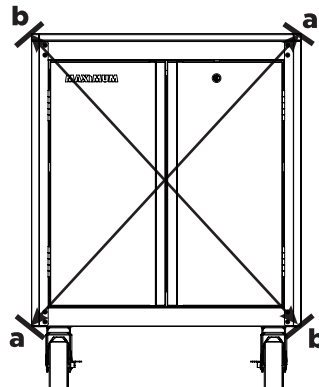


STEP 10 ADJUSTING THE CABINET AND TIGHTENING THE SCREWS

- Close the doors to see if they can touch the magnets completely and are flush with each other. If not, adjust the cabinet's top and side panels to make sure the shape of the cabinet is square and flush (diagonal line $aa=bb$).
- When the doors catch the magnets completely and are flush, tighten all the screws you previously tightened by hand.

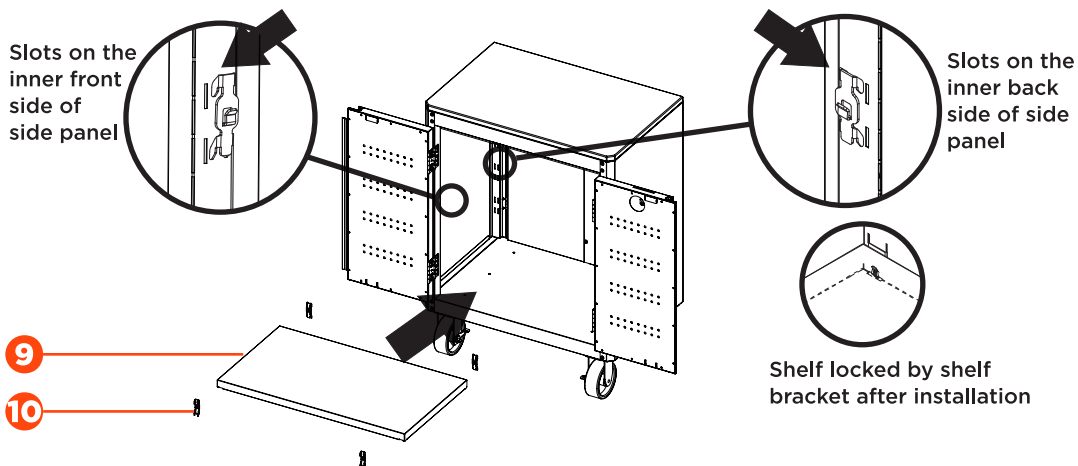


Tighten all screws you previously tightened by hand



STEP 11 INSTALL THE SHELF

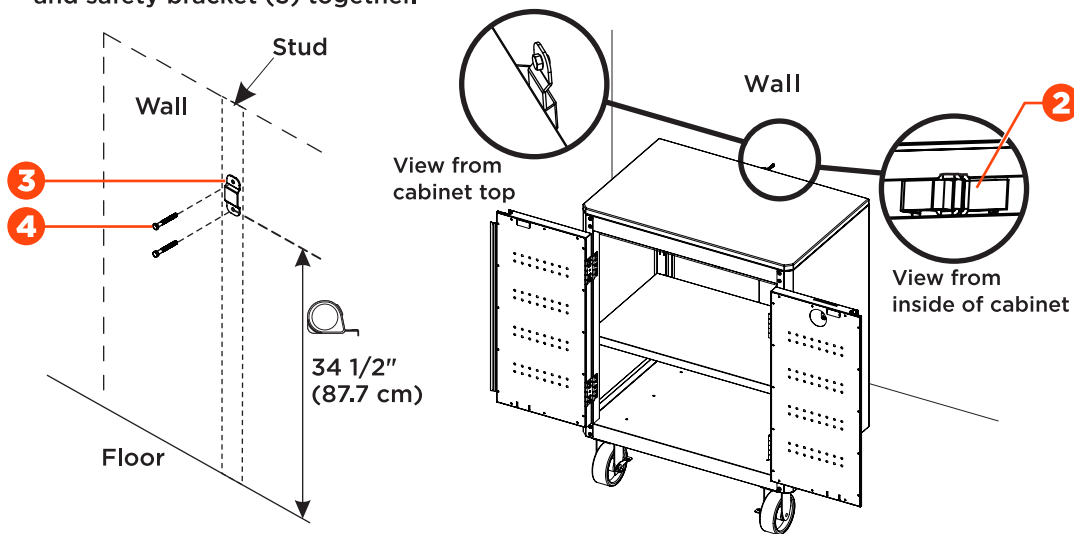
Insert four shelf brackets (10) into the slots on the side panels at the desired height. Make sure the four brackets (10) are at the same height. Place the shelf (9) over the shelf brackets.

**STEP 12 SECURE THE CABINET TO WALL**

NOTE: The M6 x 40 hex tapping bolts (4) should be drilled into the wall studs.

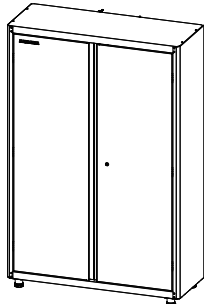
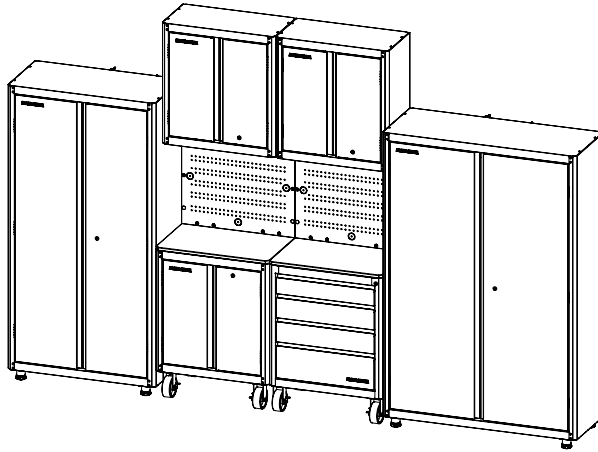
NOTE: The safety bracket's bottom M6 x 40 hex tapping bolt (4) should be 34 1/2" (87.7 cm) from the floor.

- Place the cabinet on a flat floor against a wall.
- Bolt the safety bracket (3) with two M6 x 40 hex tapping bolts (4) to the stud in the wall and fasten the base cabinet by using the safety strap (2) to tie the base cabinet and safety bracket (3) together.

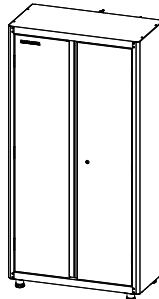


COORDINATING PRODUCTS

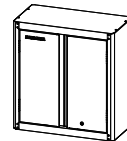
This product coordinates well with the units below to offer our best storage solutions. They can be combined into various combinations to meet different storage requirements.



**48" (122 cm)
Wide Tall Cabinet
with Stainless Steel Doors
068-1811-4**



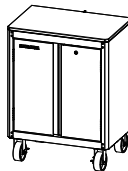
**36" (93 cm)
Wide Tall Cabinet
with Stainless Steel Doors
068-1810-6**



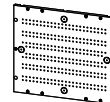
**28" (71.3 cm) Wall Cabinet
with Stainless Steel Doors
068-1807-6**



**28" (71.3 cm)
4-Drawer Pre-Assembled
Base Cabinet with Castors
and Stainless Steel Fronts
068-1809-2**



**28" (71.3 cm)
2-Door Base Cabinet
with Castors and
Stainless Steel Doors
068-1808-4**



**28 x 24" (71.3 x 60.8 cm)
Pegboard
068-1827-8**

MAINTENANCE

- Periodically clean the surfaces with a soft cloth and water.
- Grease and oil can be removed with most standard cleaning fluids. For safety, use a nonflammable cleaning fluid.

LIMITED WARRANTY

This product is guaranteed for five (5) years from the date of original retail purchase against defects in materials and workmanship.

Subject to the conditions and limitations described below, this product, if returned to us with a proof of purchase within the stated warranty period and if covered under this warranty, will be repaired or replaced (with the same model, or one of equal value or specification), at our option. We will bear the cost of any repair or replacement and any costs of labour relating thereto.

This warranty is subject to the following conditions and limitations:

- a) A sales receipt that indicates the date of purchase must be provided;
- b) This warranty will not apply to any product or part thereof which is worn or broken or which has become inoperative due to abuse, misuse, accidental damage, neglect or lack of proper installation, operation or maintenance (as outlined in the applicable owner's manual or operating instructions) or which is being used for industrial, professional, commercial or rental purposes;
- c) This warranty will not apply to normal wear and tear or to expendable parts or accessories that may be supplied with the product which are expected to become inoperative or unusable after a reasonable period of use;
- d) This warranty will not apply to routine maintenance and consumable items such as, but not limited to, fuel, lubricants, vacuum bags, blades, belts, sandpaper, bits, fluids, tune-ups or adjustments;
- e) This warranty will not apply if damage is caused by repairs made or attempted by others (i.e., persons not authorized by the manufacturer);
- f) This warranty will not apply to any product that was sold as a reconditioned or refurbished product (unless otherwise specified in writing);
- g) This warranty will not apply to any product or part thereof if any part from another manufacturer is installed therein or any repairs or alterations have been made or attempted by unauthorized persons;
- h) This warranty will not apply to normal deterioration of the exterior finish, such as, but not limited to, scratches, dents, paint chips, or to any corrosion or discolouring by heat, abrasive and chemical cleaners; and
- i) This warranty will not apply to component parts sold by and identified as the product of another company, which shall be covered under the product manufacturer's warranty, if any.

Additional Limitations

This warranty applies only to the original purchaser and may not be transferred. Neither the retailer nor the manufacturer shall be liable for any other expense, loss or damage, including, without limitation, any indirect, incidental, consequential or exemplary damages arising in connection with the sale, use or inability to use this product.

Notice to Consumer

This warranty gives you specific legal rights, and you may have other rights, which may vary from province to province. The provisions contained in this warranty are not intended to limit, modify, take away from, disclaim or exclude any statutory warranties set forth in any applicable provincial or federal legislation.