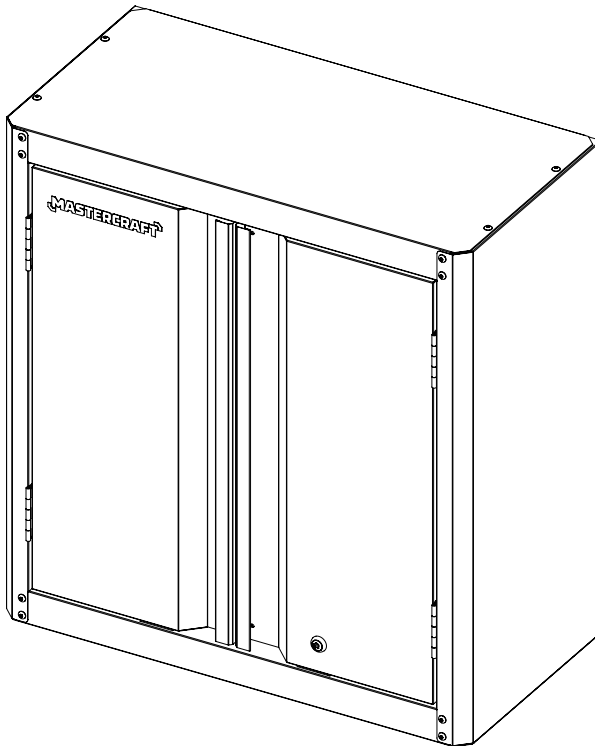


MASTERCRAFT™/MC

28" (71.3 cm) Wall Cabinet Model no. 068-1802-6



IMPORTANT

Please read this manual carefully before assembling and using this product, and save it for reference.

INSTRUCTION MANUAL

Due to continuing improvements, the actual product may differ slightly from the product described herein.

TABLE OF CONTENTS

SAFETY	3
MAINTENANCE	3
EXPLODED VIEW / PARTS LIST	4
ASSEMBLY INSTRUCTIONS	5
COORDINATING PRODUCTS	11
WARRANTY	12

NOTE:

If any parts are missing or damaged, or if you have any questions, please call our toll-free helpline at 1-800-689-9928. Have the product number, cash register receipt and the date of purchase available when you call. DO NOT SHIP YOUR PRODUCT BACK TO THE STORE UNLESS WE SEND YOU WRITTEN INSTRUCTIONS FOR RETURN.

**SAVE THESE INSTRUCTIONS**

This manual contains important safety and operating instructions. Read all instructions and follow them carefully with use of this product.

SAFETY

To reduce the risk of serious injury, read and follow the safety instructions below before assembling and using this product.

- This product is intended for indoor use only.
- This product is not designed for commercial nor industrial usage.
- Keep the product on level surfaces. The product could become unstable and it may tip over if stored or moved on an uneven surface, which may cause personal injury, death or product damage.
- This product must be securely mounted on wall before using.
- Any assembly or maintenance of the product must be carried out by adults only.
- Arrange for necessary manpower when assembling, installing and moving the cabinet.
- Check all nuts and bolts periodically for tightness. When required, tighten them.
- Close and lock the door before moving this cabinet.
- DO NOT stand on this product. You may fall which may cause personal injury or death.
- DO NOT alter this product in any manner. For example, do not weld external bar locks or attach electrical equipment. This may cause product damage or personal injury.
- DO NOT leave children unattended near this product.
- DO NOT put anything on the top panel of the cabinet.
- DO NOT exceed the following weight limit for this product.
 - Maximum load: 122 lb (55 kg)
 - Maximum load for shelf: 50 lb (22.5 kg)
 - Maximum load for bottom panel: 50 lb (22.5 kg)
 - Maximum load for each door: 11 lb (5 kg)

MAINTENANCE

- Periodically clean the surfaces with a soft cloth and water.
- Grease and oil can be removed with most standard cleaning fluids. For safety, use a nonflammable cleaning fluid.



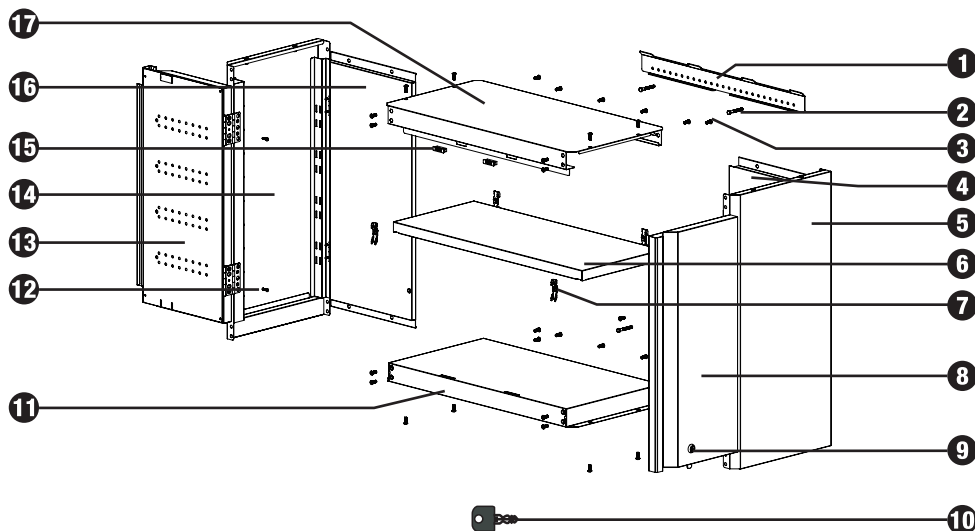
- Before assembling and using this product, carefully read this instruction manual and all of the labels affixed to the product. Failure to follow all warnings and instructions may result in product damage or personal injury.
- Save all warnings and instructions for future reference.

EXPLODED VIEW / PARTS LIST

No.	Description	Part No.	Qty.	No.	Description	Part No.	Qty.
1	Mounting bracket	246285	1	10	Key (001-010)	304196	2
2	M6 x 40 hex tapping bolt	320328	4	11	Bottom panel	124176	1
3	M6 x 16 hex socket head screw *	320327	30	12	M4 x 16 cross-head pan head screw	320362	4
4	Right back panel	246283	1	13	Left door	124181	1
5	Right side panel	124171	1	14	Left side panel	124170	1
6	Shelf	246284	1	15	Magnet	312033	2
7	Shelf bracket	243311	4	16	Left back panel	124172	1
8	Right door	124182	1	17	Top panel	124175	1
9	Lock (001-010)	304075	1	18	Hex wrench	317035	1



* NOTE: Extra M6 x 16 hex socket head screw(s) is (are) provided.

**NOTE:**

- Replacement keys may be ordered. Call our toll-free number. The code which appears on the lock will be required.
- Give information for spare parts: part number and quantity required.

ASSEMBLY INSTRUCTIONS

TOOLS REQUIRED FOR ASSEMBLY

- Hex wrench (18)
- Power drill (not included)
- Measuring tape (not included)

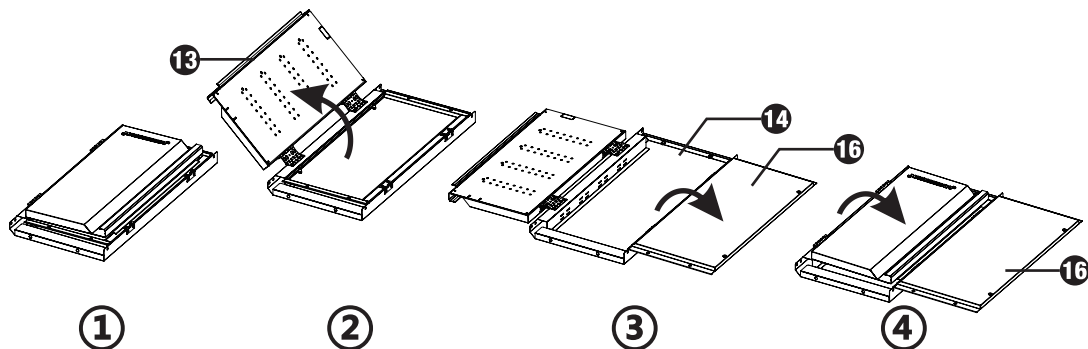
NOTE: Assemble on a flat surface. A piece of cardboard is recommended to keep the product from being scratched during assembly.



Please wear gloves during the whole assembly process.

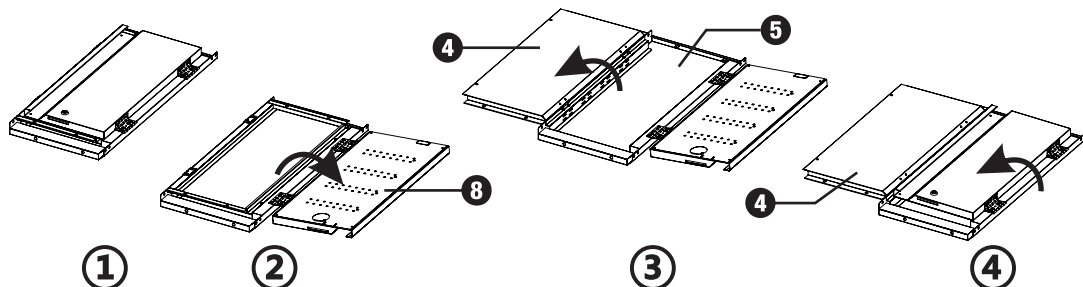
STEP 1 TURN THE LEFT BACK PANEL OUT

- Take out the left door set (13, 14 and 16) with Mastercraft[®] logo as shown in illustration 1.
- Open the left door (13) and turn the left back panel (16) out as shown in illustrations 2 and 3.
- Close the left door (13) back as shown in illustration 4.



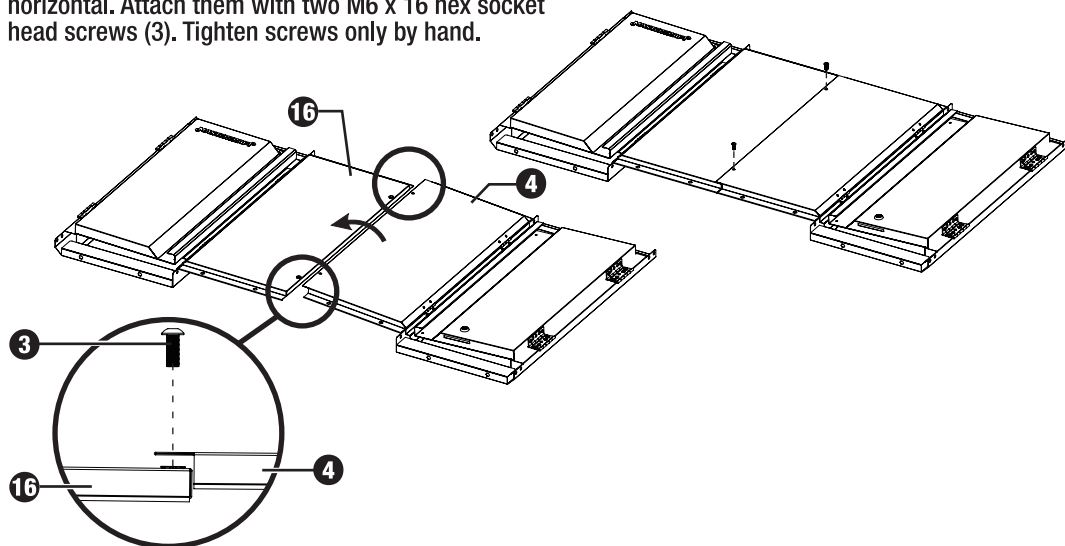
STEP 2 TURN THE RIGHT BACK PANEL OUT

- Take out the right door set (4, 5 and 8) with the lock as shown in illustration 1.
- Open the right door (8) and turn the right back panel (4) out as shown in illustrations 2 and 3.
- Close the right door (8) back as shown in illustration 4.



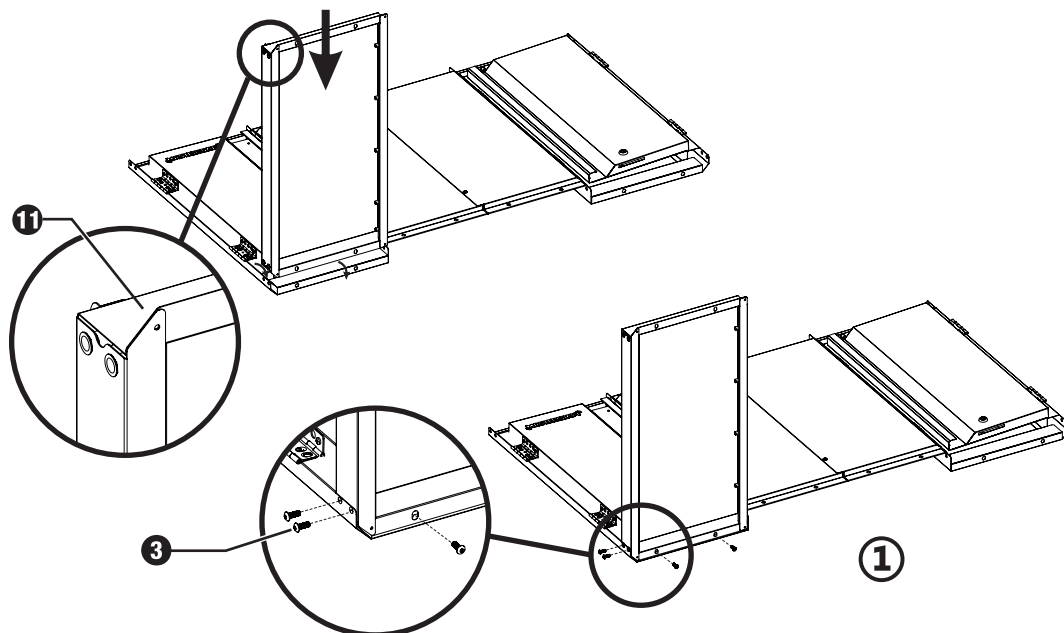
STEP 3 CONNECT THE BACK PANELS

Hold up both back panels (4 and 16) and make them horizontal. Attach them with two M6 x 16 hex socket head screws (3). Tighten screws only by hand.

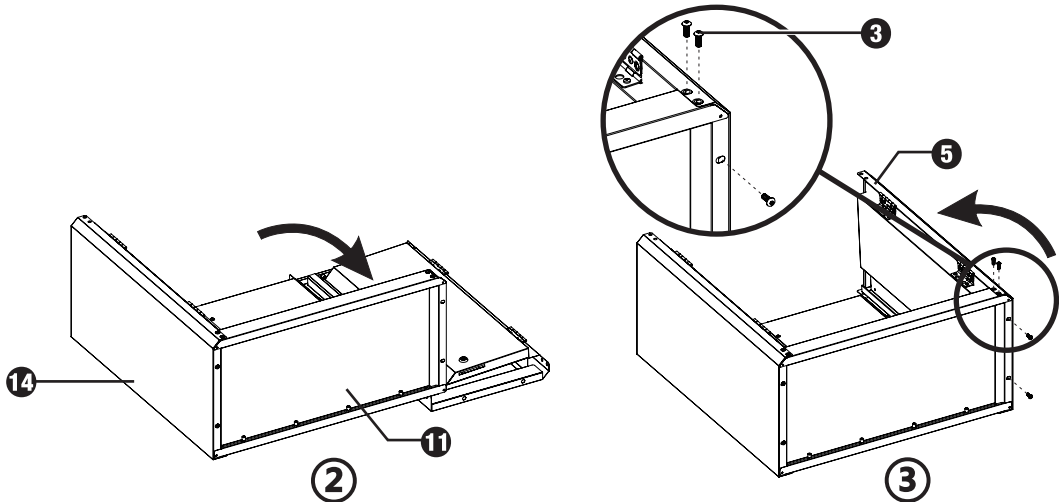


STEP 4 CONNECT THE BOTTOM PANEL AND SIDE PANELS

Attach the bottom panel (11) to the left side panel with four M6 x 16 hex socket head screws (3) as shown in illustration 1. Tighten screws only by hand.

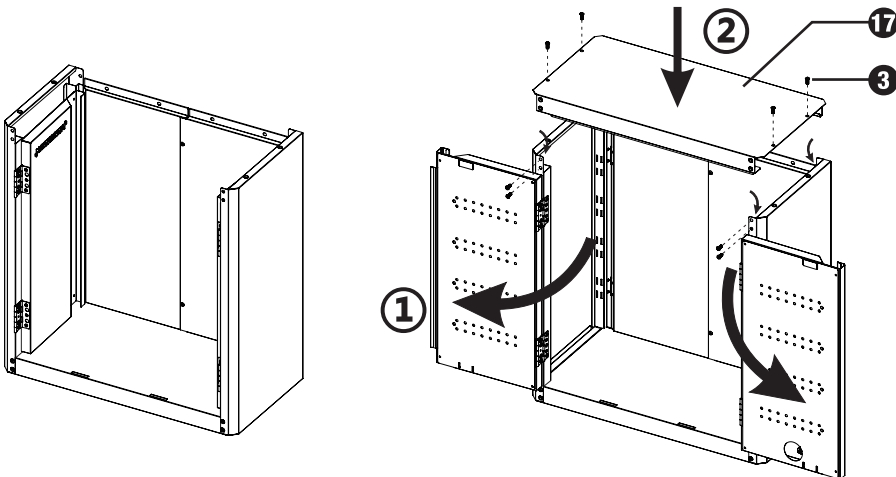


- Flip the bottom panel (11) and left side panel (14) by 90° as shown in illustration 2.
- Flip up the right door set (4, 5 and 8). Connect the right side panel (5) and bottom panel (11) with four M6 x 16 hex socket head screws (3) as shown in illustration 3. Tighten screws only by hand.



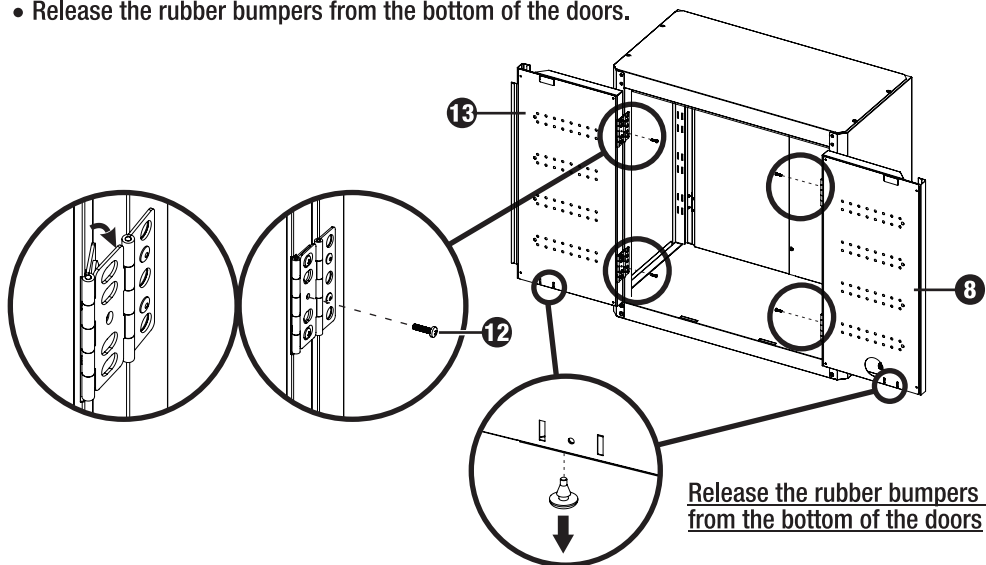
STEP 5 ATTACH THE TOP PANEL

- Stand up the cabinet.
- Open the doors first. Attach the top panel (17) to the side panels with eight M6 x 16 hex socket head screws (3). Tighten screws only by hand.



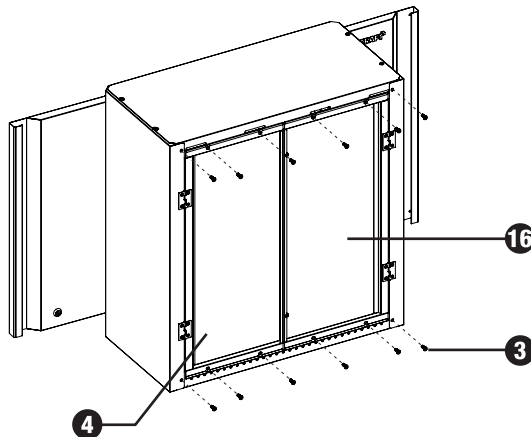
STEP 6 FIX THE HINGES

- Fully open the left door (13) to 180° and make sure both hinges are fully extended.
- Push the door inward horizontally to make sure two flaps of each hinge are overlapped. Secure them with two M4 x 16 cross-head pan head screws (12), one for each hinge.
- Repeat the same procedure to fix the hinges to the right door (8).
- Release the rubber bumpers from the bottom of the doors.



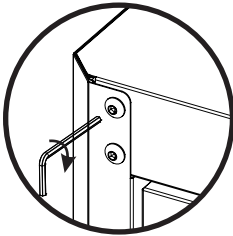
STEP 7 FIX THE BACK PANELS

Fix the back panels (4 and 16) to the back with twelve M6 x 16 hex socket head screws (3). Tighten screws only by hand.

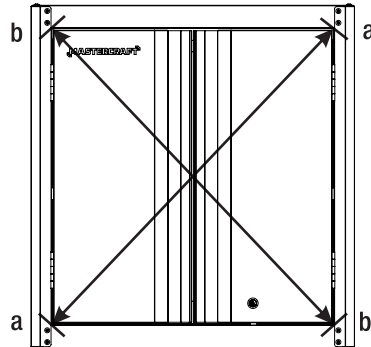


STEP 8 ADJUSTING THE CABINET AND TIGHTENING THE SCREWS

- Close the doors to see if they can touch the magnets completely and are flush with each other. If not, adjust the cabinet's top and side panels to make sure the shape of the cabinet is square and flush (diagonal line $aa=bb$).
- When the doors catch the magnets completely and are flush, tighten all the screws at the cabinet front, back, top and bottom.

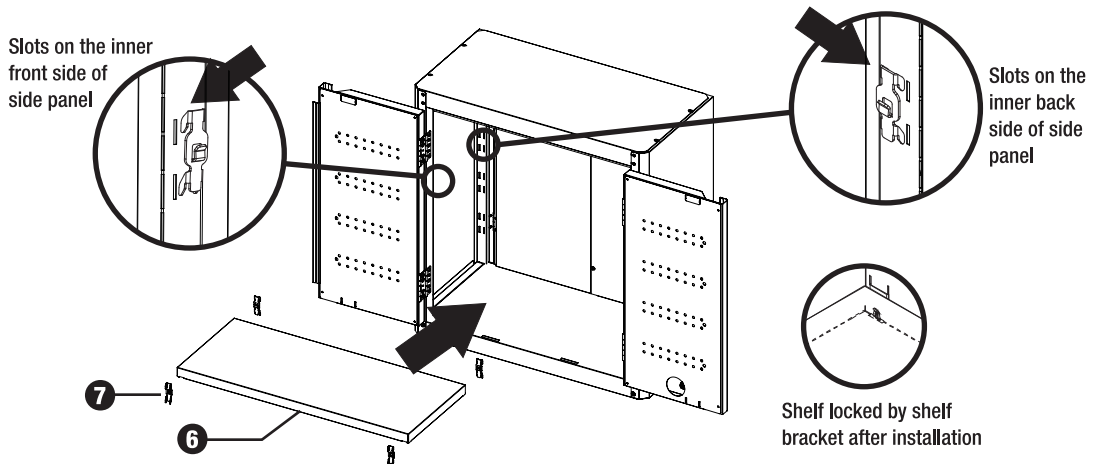


Tighten all screws you previously tightened by hand




STEP 9 INSTALL THE SHELF

Insert four shelf brackets (7) into the slots on the side panels at the desired height. Make sure the four brackets (7) are at the same height. Place the shelf (6) over the shelf brackets (7).

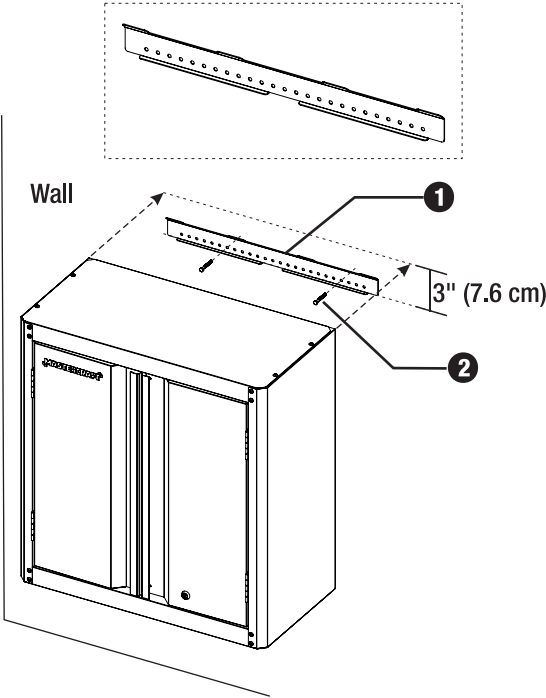


STEP 10 INSTALL THE MOUNTING BRACKET


 The M6 x 40 hex tapping bolts (2) should be drilled into the wall studs.

 Wear safety glasses when drilling the screws into the wall.

- Decide the location of the wall cabinet on the wall first to find the location of the mounting bracket (1). The bottom edge of the mounting bracket (1) should be 3" (7.6 cm) below the cabinet's top edge.
- Install the mounting bracket (1) on the wall with two M6 x 40 hex tapping bolts (2).

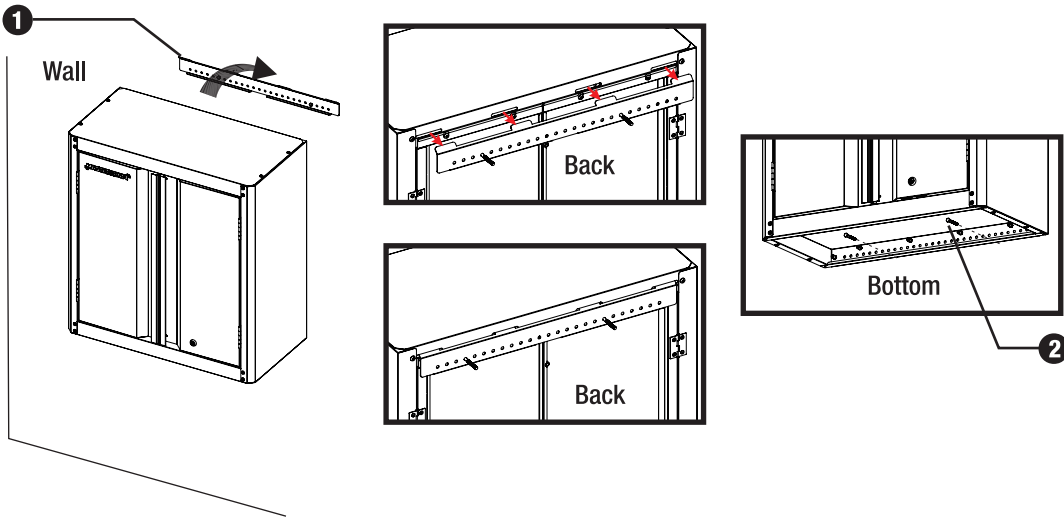


STEP 11 HANG THE CABINET

 Make sure the wall cabinet is securely attached to the mounting bracket (1).

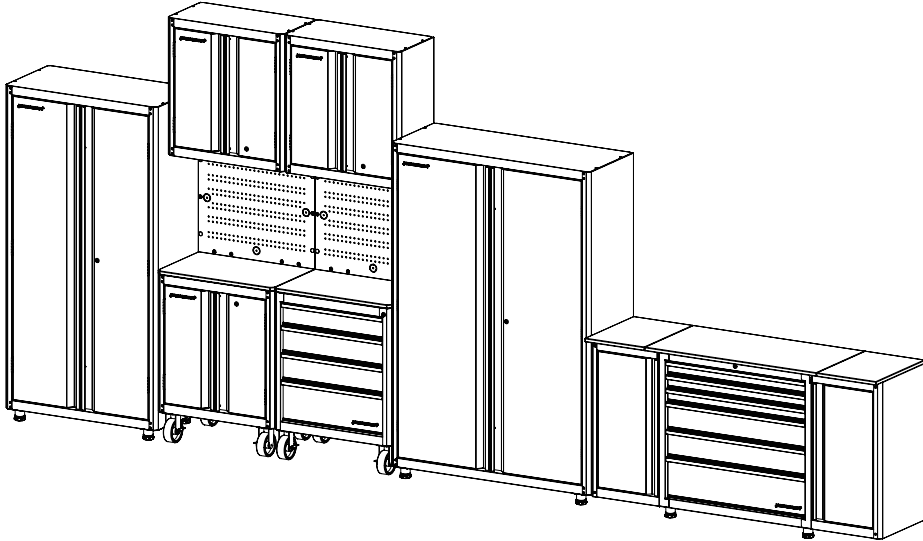
 The M6 x 40 hex tapping bolts (2) should be drilled into the studs of the wall.

- Hang the wall cabinet onto the mounting bracket (1).
- Connect the cabinet bottom to the wall with two M6 x 40 hex tapping bolts (2).

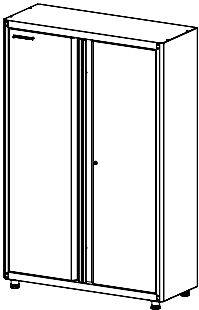


COORDINATING PRODUCTS

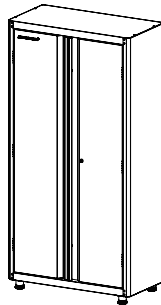
This product coordinates well with the units below to offer our best storage solutions. They can be combined into various combinations to meet different storage requirements.



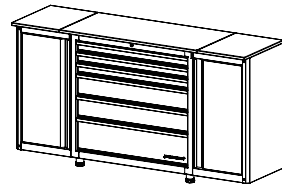
COORDINATING PRODUCTS



48" (122 cm)
Wide Tall Cabinet
068-1806-8



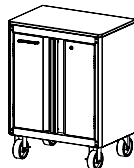
36" (93 cm)
Wide Tall Cabinet
068-1805-0



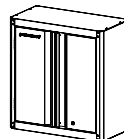
70" (178 cm)
6-Drawer 2-Door Workstation
068-1812-2



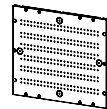
28" (71.3 cm)
4-Drawer Base Cabinet
with Castors
068-1804-2



28" (71.3 cm)
2-Drawer Base Cabinet
with Castors
068-1803-4



28" (71.3 cm)
Wall Cabinet
068-1802-6



24" (61 cm)
Pegboard
068-1827-8

LIMITED WARRANTY

This product is guaranteed for one (1) year from the date of original retail purchase against defects in materials and workmanship.

Subject to the conditions and limitations described below, this product, if returned to us with a proof of purchase within the stated warranty period and if covered under this warranty, will be repaired or replaced (with the same model, or one of equal value or specification), at our option. We will bear the cost of any repair or replacement and any costs of labour relating thereto.

This warranty is subject to the following conditions and limitations:

- a) A sales receipt that indicates the date of purchase must be provided;
- b) This warranty will not apply to any product or part thereof which is worn or broken or which has become inoperative due to abuse, misuse, accidental damage, neglect or lack of proper installation, operation or maintenance (as outlined in the applicable owner's manual or operating instructions) or which is being used for industrial, professional, commercial or rental purposes;
- c) This warranty will not apply to normal wear and tear or to expendable parts or accessories that may be supplied with the product that are expected to become inoperative or unusable after a reasonable period of use;
- d) This warranty will not apply to routine maintenance and consumable items such as, but not limited to, fuel, lubricants, vacuum bags, blades, belts, sandpaper, bits, fluids, tune-ups or adjustments;
- e) This warranty will not apply if damage is caused by repairs made or attempted by others (i.e., persons not authorized by the manufacturer);
- f) This warranty will not apply to any product that was sold as a reconditioned or refurbished product (unless otherwise specified in writing);
- g) This warranty will not apply to any product or part thereof if any part from another manufacturer is installed therein or any repairs or alterations have been made or attempted by unauthorized persons;
- h) This warranty will not apply to normal deterioration of the exterior finish, such as, but not limited to, scratches, dents, paint chips, or to any corrosion or discolouring by heat, abrasive and chemical cleaners; and
- i) This warranty will not apply to component parts sold by and identified as the product of another company, which shall be covered under the product manufacturer's warranty, if any.

Additional Limitations

This warranty applies only to the original purchaser and may not be transferred. Neither the retailer nor the manufacturer shall be liable for any other expense, loss or damage, including, without limitation, any indirect, incidental, consequential or exemplary damages arising in connection with the sale, use or inability to use this product.

Notice to Consumer

This warranty gives you specific legal rights, and you may have other rights, which may vary from province to province. The provisions contained in this warranty are not intended to limit, modify, take away from, disclaim or exclude any statutory warranties set forth in any applicable provincial or federal legislation.

This product is not guaranteed if used for industrial or commercial purposes.

Made in China.

Imported by Mastercraft Canada Toronto, Canada M4S 2B8