

model no. 068-1575-6

Mastercraft®/MD

28" (71 cm) Base Cabinet with Drawers



IMPORTANT

Please read this manual carefully before assembling and using this product, and save it for reference.

INSTRUCTION MANUAL

Due to continuing improvements, the actual product may differ slightly from the product described herein.

TABLE OF CONTENTS

SAFETY	3
MAINTENANCE	3
EXPLODED VIEW / PARTS LIST	4
ASSEMBLY INSTRUCTIONS	5
COORDINATING PRODUCTS	13
WARRANTY	14

NOTE:

If any parts are missing or damaged, or if you have any questions, please call our toll-free helpline at: 1-800-689-9928. Have the product number, cash register receipt and the date of purchase available when you call. DO NOT SHIP YOUR PRODUCT BACK TO THE STORE UNLESS WE SEND YOU WRITTEN INSTRUCTIONS FOR RETURN.



SAVE THESE INSTRUCTIONS

This manual contains important safety and operating instructions. Read all instructions and follow them carefully with use of this product.

SAFETY

To reduce the risk of serious injury, read and follow the safety instructions below before assembling and using this product.

- This product is intended for indoor use only.
- This product is not designed for commercial nor industrial usage.
- Keep the product on level surfaces. The product could become unstable and it may tip over if stored or moved on an uneven surface, which may cause personal injury, death or product damage.
- Any assembly or maintenance of the product must be carried out by adults only.
- Use at least two people to move, assemble or install this cabinet. Failure to do so can result in personal injury or product damage.
- Check all nuts and bolts periodically for tightness. When required, tighten them.
- Close and lock the drawers before moving this cabinet.
- Fill from the bottom drawer up. If the cabinet is filled from the top drawer down, it will be top-heavy and may tip over.
- It is always recommended to secure this product to the wall with the anti-tip hardware provided.
- DO NOT alter this product in any manner. For example, do not weld external bar locks or attach electrical equipment. This may cause product damage or personal injury.
- DO NOT leave children unattended near this product. Cabinets may tip over if improperly opened.
- DO NOT open more than one drawer at a time.
- DO NOT step or climb on this product or on the drawers.
- DO NOT exceed the following weight limits for this product.
 - Maximum load: 430 lb (195 kg)
 - Maximum load for each drawer: 70 lb (32 kg)
 - Maximum load for rubber wood top: 150 lb (68 kg)

MAINTENANCE

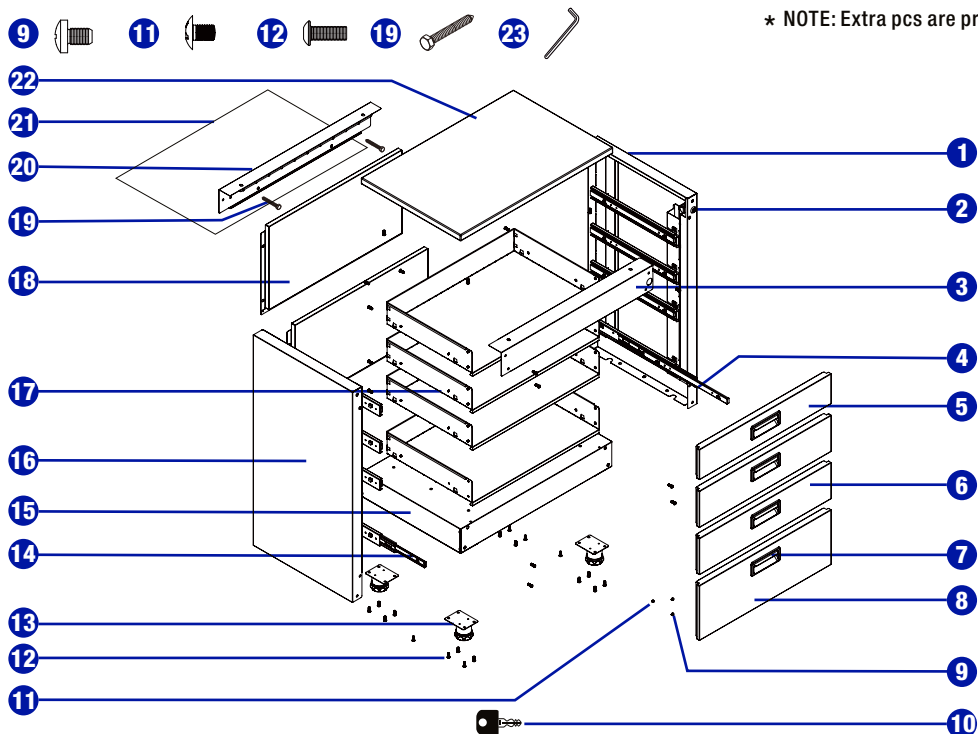
- Lubricate the slides (twice a year) with a spray lubricant or light duty oil.
- Periodically clean the surfaces with a soft rag and water.
- Grease and oil can be removed with most standard cleaning fluids.
For safety, use a nonflammable cleaning fluid.



- Before assembling and using this product, carefully read this instruction manual and all of the labels affixed to the product. Failure to follow all warnings and instructions may result in product damage or personal injury.
- Save all warnings and instructions for future reference.

EXPLODED VIEW / PARTS LIST

No.	Description	Part No.	Qty.	No.	Description	Part No.	Qty.
1	Right side panel	121613	1	12	M6 x 16 hex socket head screw *	320327	48
2	Lock (001-010)	304236	1	13	Adjustable foot	313066	4
3	Front top beam	242913	1	14	Left slide	300398	4
4	Right slide	300399	4	15	Bottom panel	121607	1
5	Top drawer front panel	121548	1	16	Left side panel	121611	1
6	Middle drawer front panel	121549	2	17	Drawer panel	242781	4
7	Drawer handle	306018	4	18	Back panel	113539	2
8	Bottom drawer front panel	121550	1	19	M6 x 40 hex tapping bolt	320328	2
9	M4 x 6 cross-head pan head tapping bolt *	320335	16	20	Back top beam	242909	1
10	Key (001-010)	304196	2	21	Drawer liner	552183	4
11	M4 x 5 cross-head bolt *	320336	16	22	Rubberwood top	572161	1
				23	Hex wrench	317023	1



* NOTE: Extra pcs are provided.

NOTE:

- Replacement keys may be ordered. Call our toll-free number. The code which appears on the lock will be required.
- Give information for spare parts: part number and quantity required.

ASSEMBLY INSTRUCTIONS

TOOLS REQUIRED FOR ASSEMBLY

- Hex Wrench (23)
- Cross-head Screwdriver (not included; magnetic is preferable)
- Power Drill (not included)
- Measuring Tape (not included)

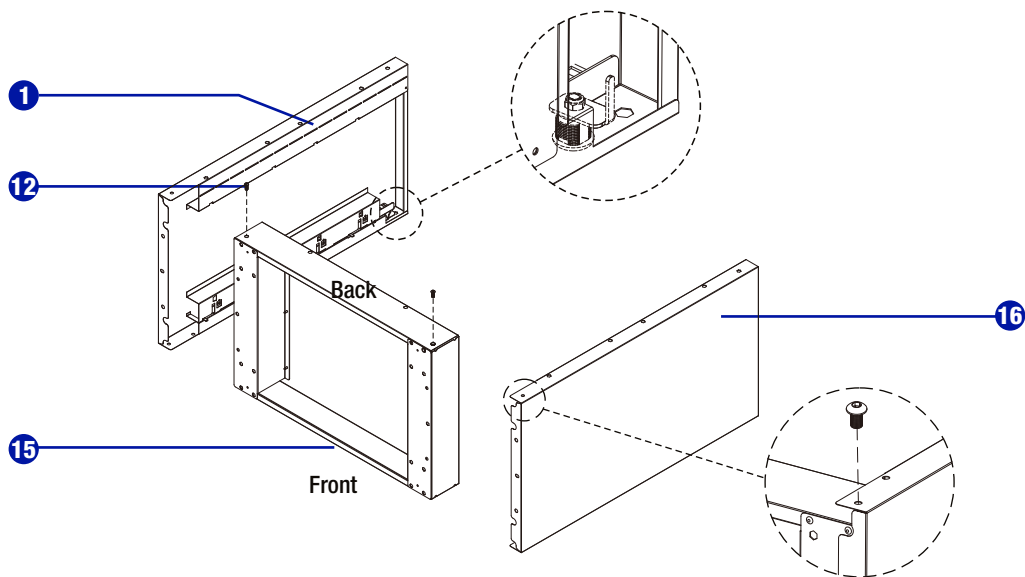
NOTE: Assemble on a flat surface. A piece of cardboard is recommended to keep the product from being scratched during assembly.



Please wear gloves during the whole assembly process.

STEP 1 ATTACH THE SIDE AND BOTTOM PANELS

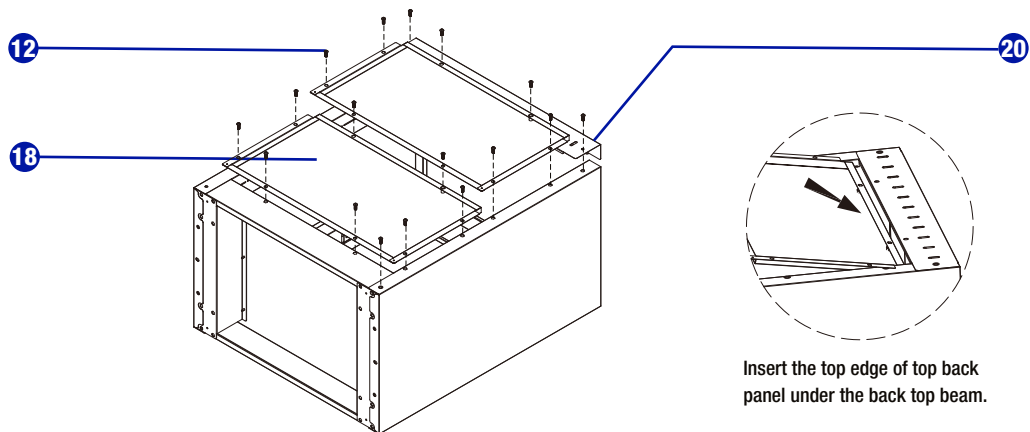
Lay the bottom panel (15) on its front and attach the side panels (1 & 16) to the bottom panel (15) with two M6 x 16 hex socket head screws (12) through the holes on bottom left and right corners. **DO NOT** tighten.



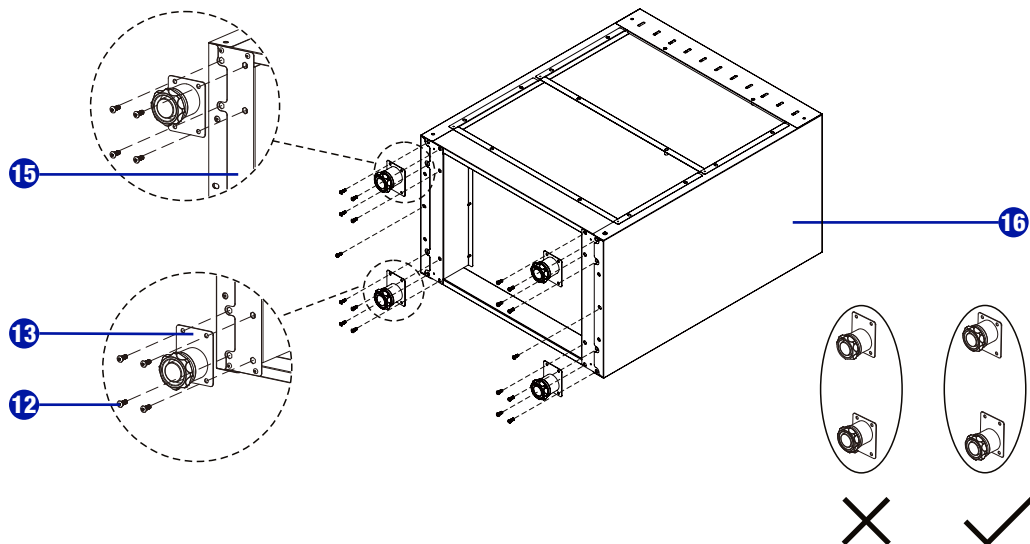
STEP 2 ATTACH THE BACK TOP BEAM AND BACK PANELS

The top edge of the top back panel (18) should be inserted under the back top beam (20).

Attach the back top beam (20) and back panels (18) to the back. Insert sixteen M6 x 16 hex socket head screws (12) by hand. DO NOT tighten.

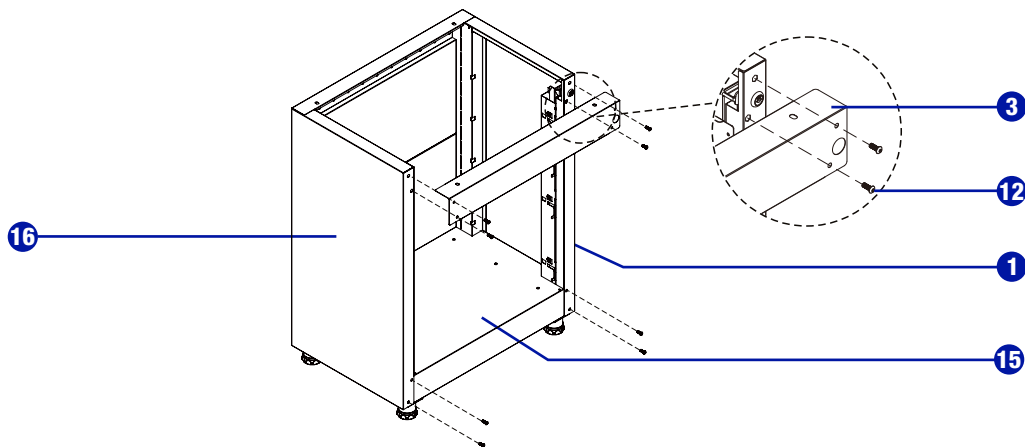
**STEP 3 INSTALL THE ADJUSTABLE FEET**

- Install the adjustable feet (13) to the bottom panel (15). Tighten securely with sixteen M6 x 16 hex socket head screws (12).
- Screw two M6 x 16 hex socket head screws in the middle through the side panels (1 & 16) into the bottom panel (15). Tighten securely.



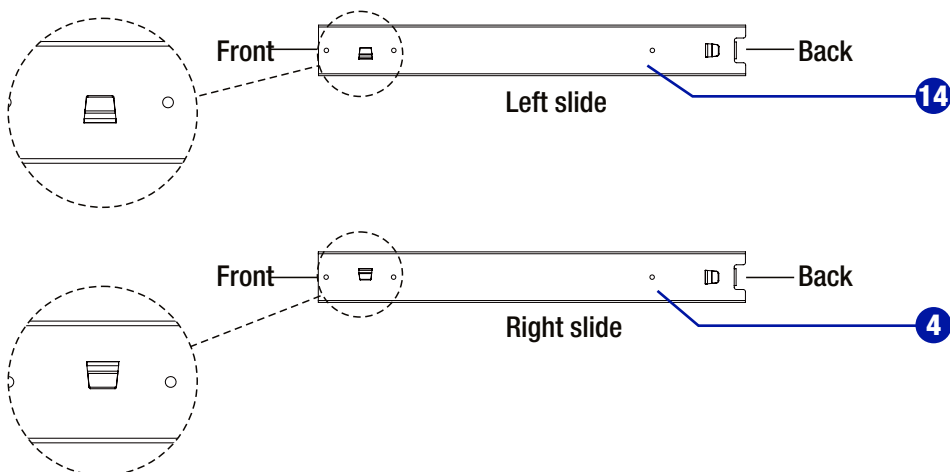
STEP 4 ATTACH THE FRONT TOP BEAM

- Stand up the cabinet.
- Attach the front top beam (3) to the side panels (1 & 16) with four M6 x 16 hex socket head screws (12). DO NOT tighten.
- Screw four M6 x 16 hex socket head screws (12) through the side panels (1 & 16) into the bottom panel (15). DO NOT tighten.

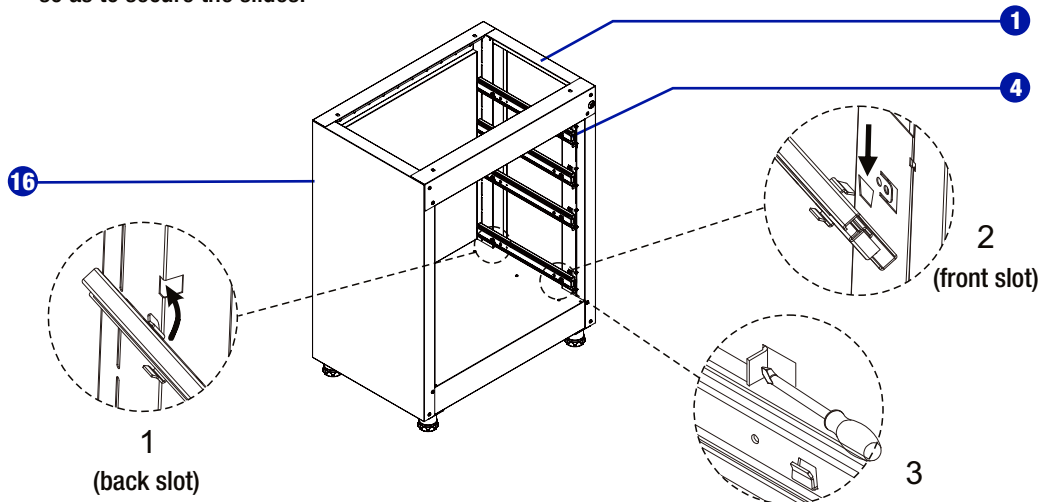


STEP 5 INSTALL THE SLIDES

See the drawing below to distinguish left slide (14) and right slide (4).

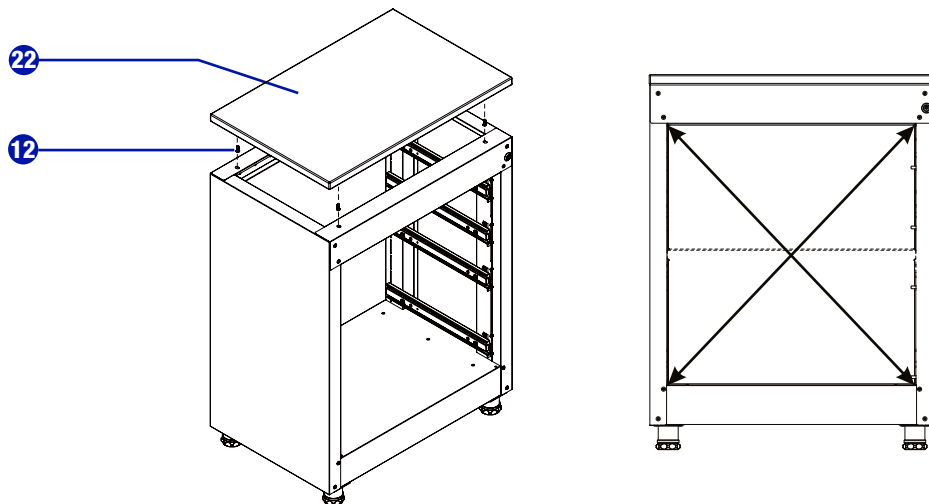


- Slide the back clip of the outer rail of a right slide (4) into the back slot at the right slide panel (1) and slide the front clip of the outer rail into the slot at the front of the right slide panel (1).
- Repeat the same procedure to install the other right slides (4) to the right slide panel (1).
- Repeat the same procedure to install four left slides (14) to the left slide panel (16).
- Bend the eight clips above the left and right slides outwards with the help of a straight screwdriver so as to secure the slides.



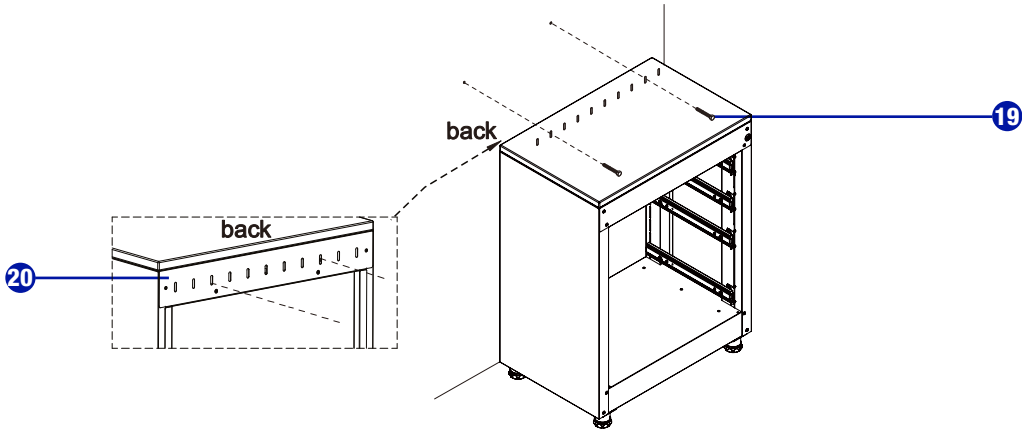
STEP 6 ATTACH THE RUBBERWOOD TOP

- Attach the rubberwood top (22) to the cabinet top by inserting four M6 x 16 hex socket head screws (12) through the pre-drilled holes underneath. Tighten securely.
- At the same time, square up the cabinet and make sure the inner diagonal lines are equal with the help of a measuring tape. Tighten all screws on front and back.



STEP 7 SECURE THE CABINET TO WALL

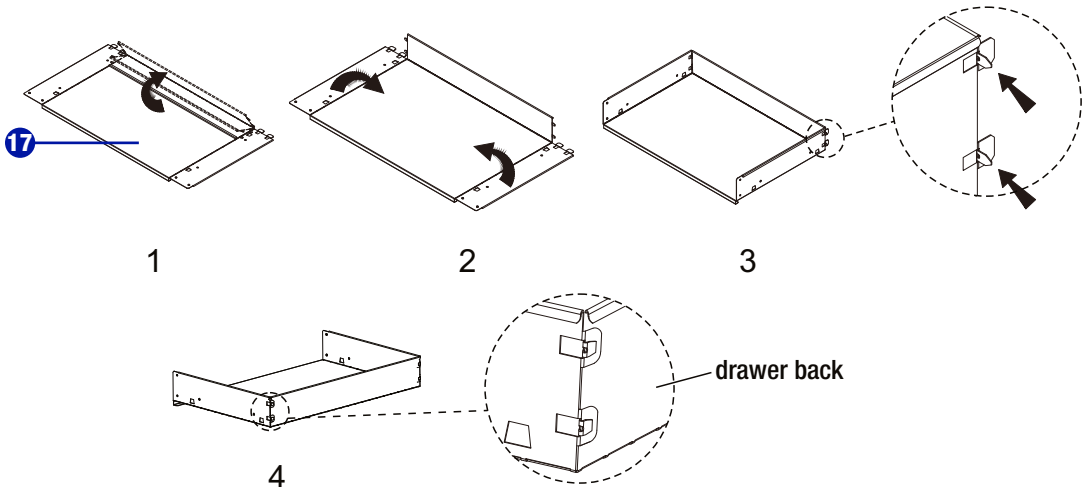
Place the cabinet on a flat floor against a wall. Use a power drill to attach the cabinet to the wall with two M6 x 40 hex tapping bolts (19) through the holes at the back top beam (20). Tighten securely. For safety, the bolts should be drilled into the studs of the wall.



STEP 8 ASSEMBLE THE DRAWERS

NOTE: Make sure your platform is free of debris or the drawer bottom is protected before laying the drawer on its bottom.

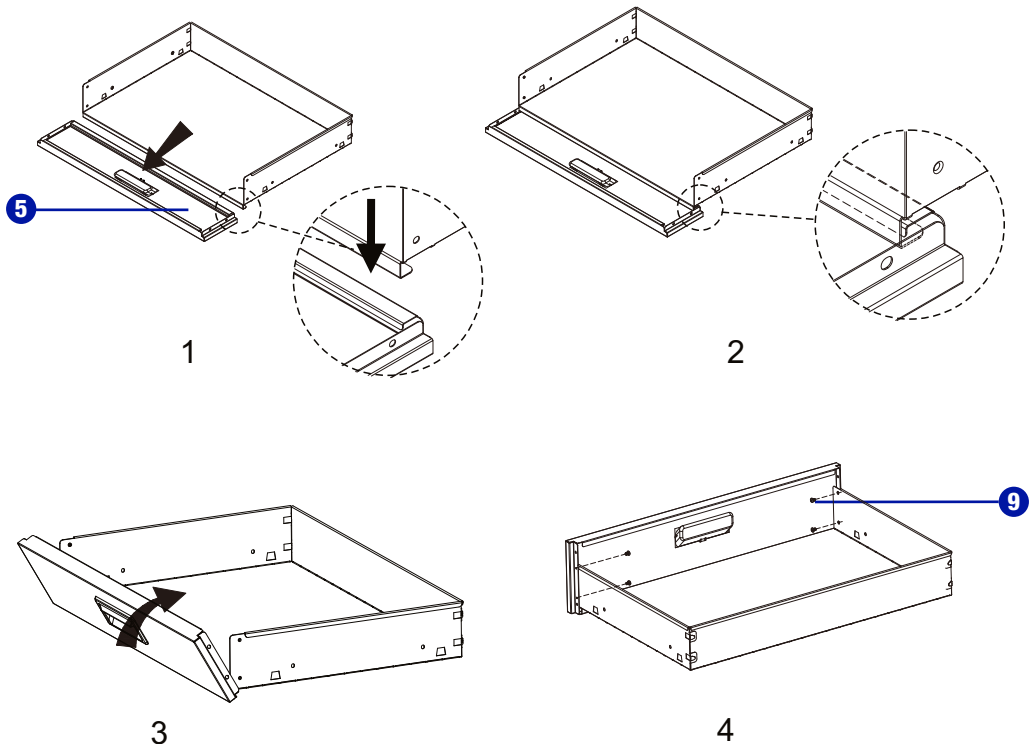
- Lay the drawer panel (17) on its bottom.
- Bend up the side panels upright to 90°. During this process, insert the clips at the two ends of the back panel into the slots of the side panels.
- Bend all the clips towards the back panel until they lean against the back panel.



STEP 9 ASSEMBLE THE DRAWERS (continued)

- Lay down the drawer front panel (5 & 6 & 8) on its face with a soft mat underneath for protection.
- Put the drawer body's front onto the drawer front panel.
- Slide the drawer body's front bottom bent edge into the bottom groove of the drawer front panel.
- Turn up the drawer front panel upright to 90°.
- Fasten the drawer front panel and side panels together using four M4 x 6 cross-head pan head tapping bolts (9).
- Repeat the same procedure to assemble all drawers.

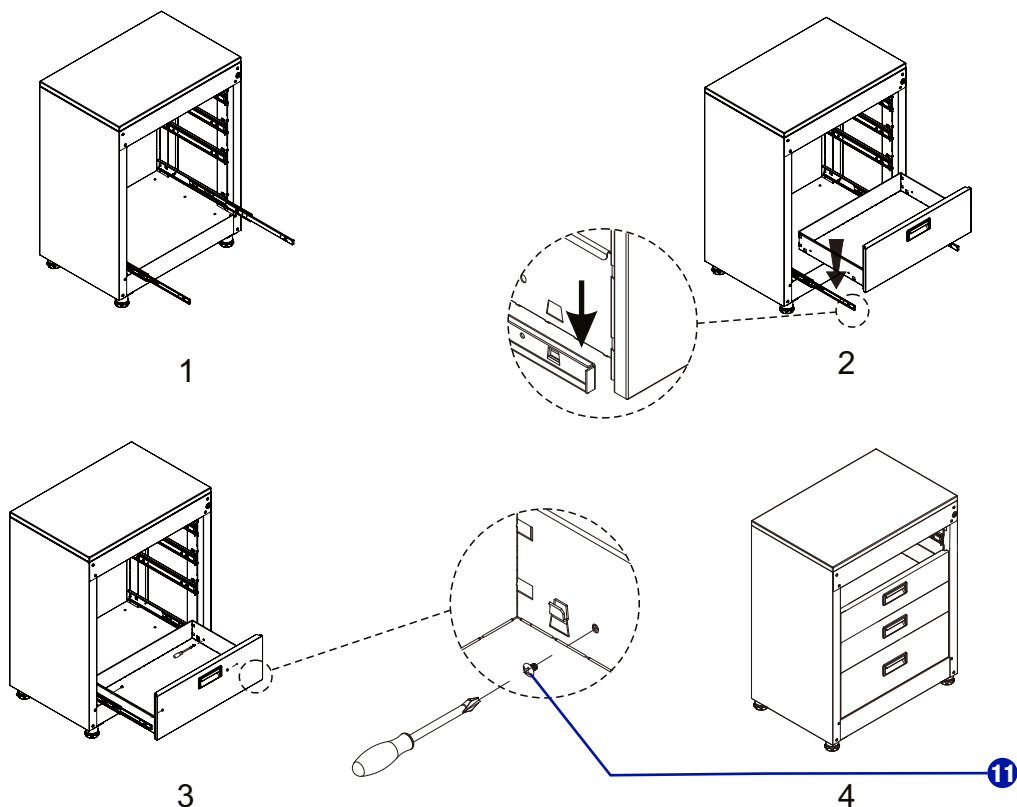
NOTE: At this step, DO NOT use power tool. Otherwise, product damage may be caused. A magnetic cross-head screwdriver is preferred.



STEP 10 ATTACH THE DRAWERS BOTTOM-UP

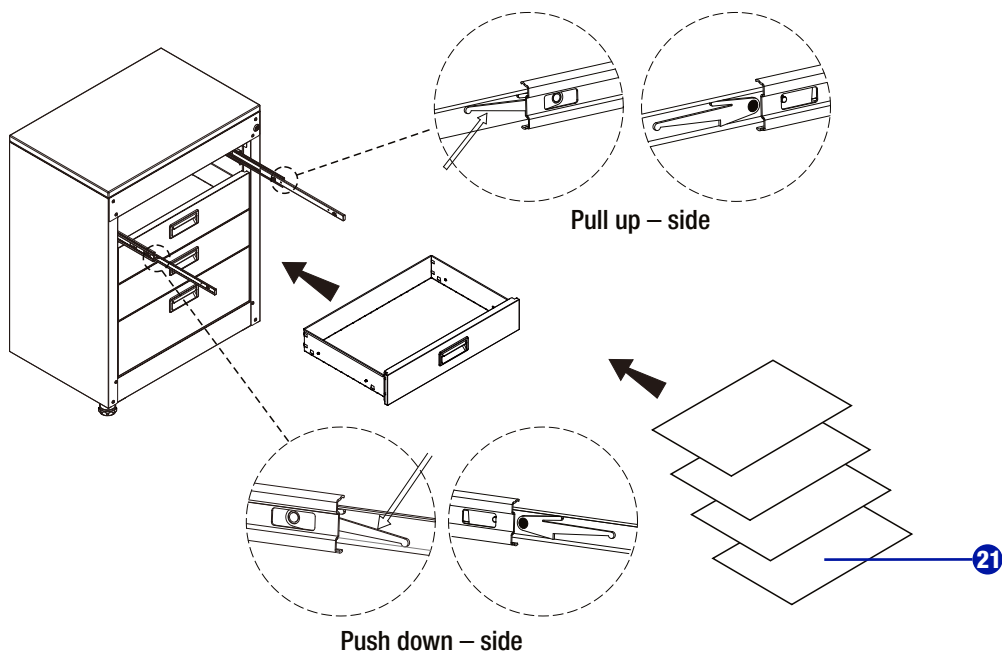
NOTE: Read the procedure to attach the top drawer (the fourth point) carefully. Otherwise, the product may be scratched.

- Extend the bottom slides and attach the bottom drawer to the slides by sliding the slots at the drawer's side panels onto the upright clips of the slides.
- Secure the drawer to the slides by screwing four M4 x 5 cross-head bolts (11) through the drawer to the slides.
- Repeat the same procedure to attach the other two middle drawers to the slides, attaching the lower one first.



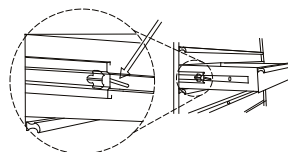
NOTE: At this step, DO NOT use power tool. A magnetic cross-head screwdriver is preferred. Otherwise, product damage may be caused.

- Before attaching the top drawer, extend the slides first. There are two black release levers on each side of inner rails. Pull one up and push the other one down until you see a silver dot.
- Repeat the same procedure as the other drawers to attach the top drawer to the slides. The cabinet is ready for use.
- Place the drawer liners (21) into each drawer of the cabinet.



DRAWER REMOVAL

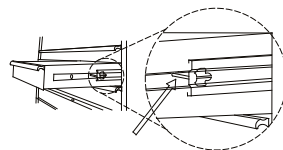
Pull the drawer out until it is extended to the maximum. There are two black release levers: one on each side of the drawer. Pull one up while you push the other one down simultaneously. At the same time, pull the drawer out of the drawer slides.



Push down - one side

DRAWER REPLACEMENT

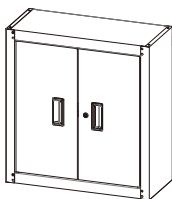
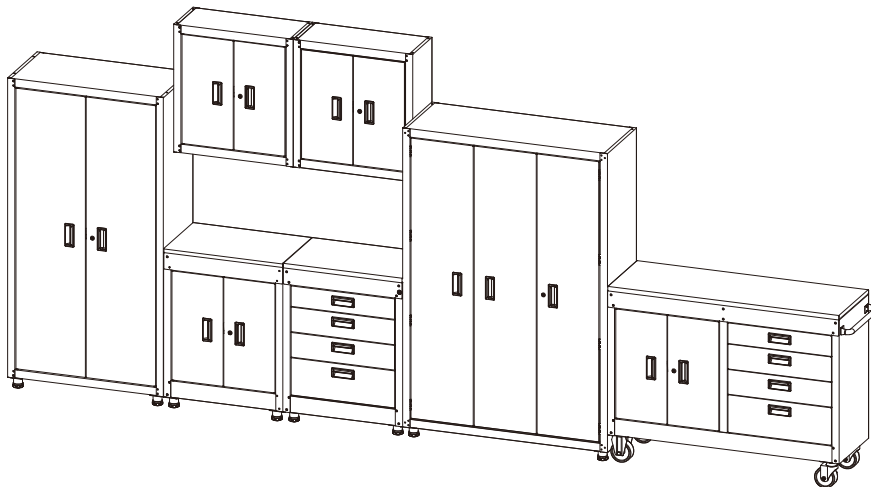
Extend the drawer slides from the tool chest or cabinet. Insert the brackets on each side of the drawer into the slots in the slides, being careful that they are properly positioned. Once properly inserted, completely close the drawer to set the slides in their proper positions.



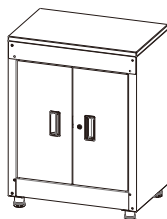
Pull up - other side

COORDINATING PRODUCTS

This product coordinates well with the units below to offer our best storage solutions. They can be combined into various combinations to meet different storage requirements.



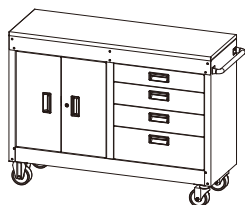
Wall Cabinet
068-0005-0



28" (71 cm) Base Cabinet
068-1554-6



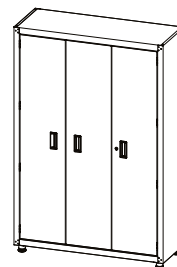
28" (71 cm) Base
Cabinet with Drawers
068-1575-6



54" (137 cm)
Workstation
068-1577-2



2-Door Tall Cabinet
068-0006-8



48 x 72" (122 x 183 cm)
Tall Cabinet
068-1576-4

LIMITED WARRANTY

This product is guaranteed for 1 year from the date of original retail purchase against defects in materials and workmanship.

Subject to the conditions and limitations described below, this product, if returned to us with a proof of purchase within the stated warranty period and if covered under this warranty, will be repaired or replaced (with the same model, or one of equal value or specification), at our option. We will bear the cost of any repair or replacement and any costs of labour relating thereto.

This warranty is subject to the following conditions and limitations:

- a) A sales receipt that indicates the date of purchase must be provided;
- b) This warranty will not apply to any product or part thereof which is worn or broken or which has become inoperative due to abuse, misuse, accidental damage, neglect or lack of proper installation, operation or maintenance (as outlined in the applicable owner's manual or operating instructions) or which is being used for industrial, professional, commercial or rental purposes;
- c) This warranty will not apply to normal wear and tear or to expendable parts or accessories that may be supplied with the product that are expected to become inoperative or unusable after a reasonable period of use;
- d) This warranty will not apply to routine maintenance and consumable items such as, but not limited to, fuel, lubricants, vacuum bags, blades, belts, sandpaper, bits, fluids, tune-ups or adjustments;
- e) This warranty will not apply if damage is caused by repairs made or attempted by others (i.e., persons not authorized by the manufacturer);
- f) This warranty will not apply to any product that was sold as a reconditioned or refurbished product (unless otherwise specified in writing);
- g) This warranty will not apply to any product or part thereof if any part from another manufacturer is installed therein or any repairs or alterations have been made or attempted by unauthorized persons;
- h) This warranty will not apply to normal deterioration of the exterior finish, such as, but not limited to, scratches, dents, paint chips, or to any corrosion or discolouring by heat, abrasive and chemical cleaners; and
- i) This warranty will not apply to component parts sold by and identified as the product of another company, which shall be covered under the product manufacturer's warranty, if any.

Additional Limitations

This warranty applies only to the original purchaser and may not be transferred. Neither the retailer nor the manufacturer shall be liable for any other expense, loss or damage, including, without limitation, any indirect, incidental, consequential or exemplary damages arising in connection with the sale, use or inability to use this product.

Notice to Consumer

This warranty gives you specific legal rights, and you may have other rights, which may vary from province to province. The provisions contained in this warranty are not intended to limit, modify, take away from, disclaim or exclude any statutory warranties set forth in any applicable provincial or federal legislation.

This product is not guaranteed if used for industrial or commercial purposes.

Made in China.

Imported by Mastercraft Canada Toronto, Canada M4S 2B8