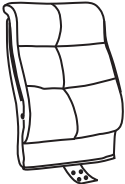

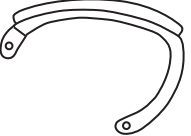

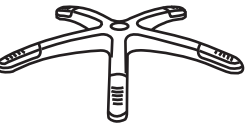
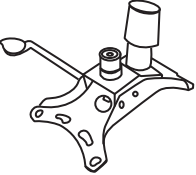





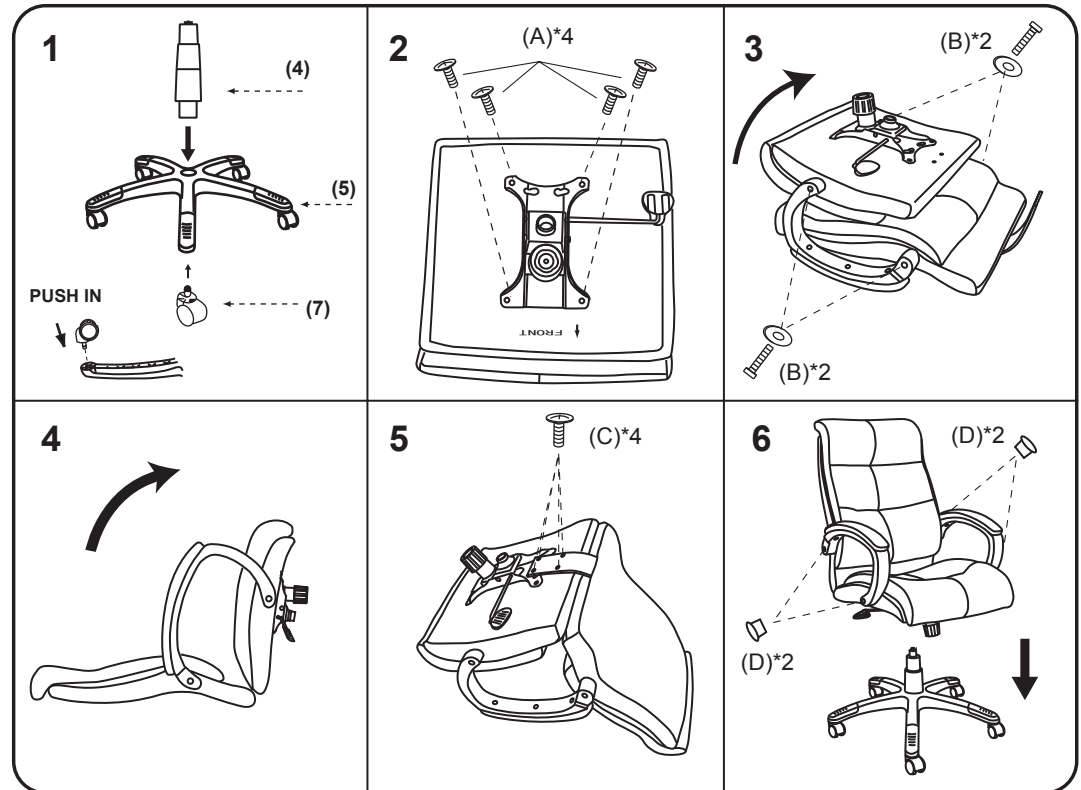


executive office chair

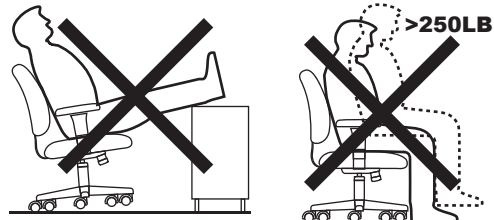
MODEL:068-0923-4

| (1)x1 | (2)x1 | (3)x1 (L)x1 (R) |
|---|---|---|
|  |  |  |
| Back Cushion | Seat Cushion | Left & Right-Arm |
| (4)x1 | (5)x1 | (6)x1 |
|  |  |  |
| Gas Lift w/ Cover | Base | Mechanism |
| (7)x 5 | | |
|  | | |
| Caster | | |
| (A)x4 |  | M8*22 MECHANISM SCREW |
| (B)x4 |  | M8*40 ARM SCREW |
| (C)x4 |  | M8*30 L-BAR SCREW |
| (D)x4 |  | ARM CAPS |



Note: Please tighten all arm screws using hex key before step 6

Insert and loosely tighten all screws. When assembly is completed, fully tighten all screws before using. This chair is only intended for sitting. Any other use will void the warranty.

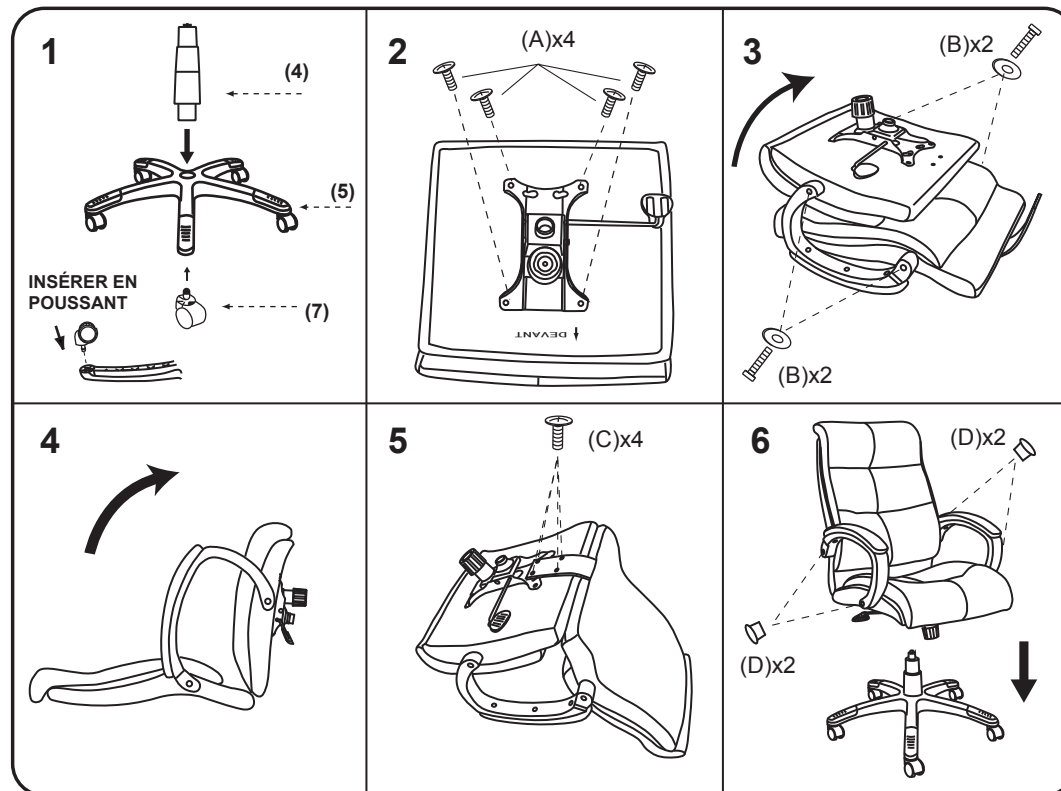


Toll-Free Helpline: 1-800-593-1888

**Imported by Trileaf Distribution
Trifeuil Toronto, Canada M4S 2B8**

MODEL:068-0923-4

| (1)x1 | (2)x1 | (3)x1 (L)x1 (R) |
|----------------------------|-------|--------------------------------|
| | | |
| Dossier | Siège | Appuie-bras gauche et droit |
| (4)x1 | (5)x1 | (6)x1 |
| | | |
| Vérin à gaz avec couvercle | Socle | Mécanisme |
| (7)x 5 | | |
| | | |
| Roulette | | |
| (A)x4 | | M8x22 VIS DU MÉCANISME |
| (B)x4 | | M8x40 VIS DES APPUIE-BRAS |
| (C)x4 | | M8x30 VIS DE LA BARRE EN L |
| (D)x4 | | CAPUCHONS POUR LES APPUIE-BRAS |



Note : serrez toutes les vis des appuie-bras avec la clé hexagonale avant l'étape 6.

Insérez les vis et vissez-les légèrement. Une fois l'assemblage terminé, serrez toutes les vis à fond avant d'utiliser la chaise. Vous ne devez utiliser cette chaise que pour vous y asseoir, sans quoi, la garantie sera annulée.

