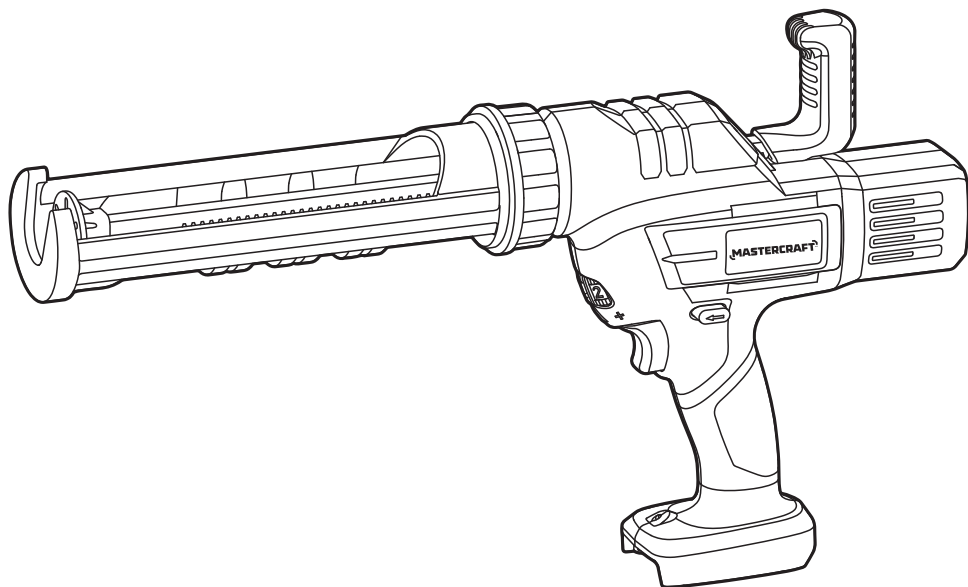


# MASTERCRAFT™/MC

## CORDLESS CAULKING GUN

064-1169-2



### IMPORTANT:

Read and understand this instruction manual thoroughly before using the product.

## INSTRUCTION MANUAL



## TABLE OF CONTENTS

Technical Specifications	4
Safety Guidelines	5
Key Parts Diagram	10
Operating Instructions	11
Maintenance	14
Troubleshooting	15
Parts List	16
Warranty	18

### NOTE:

If any parts are missing or damaged, or if you have any questions, please call our toll-free helpline at 1-800-689-9928.



### SAVE THESE INSTRUCTIONS

- This manual contains important safety and operating instructions. Read all instructions and follow them with use of this product.

**TECHNICAL SPECIFICATIONS**

Rated Voltage	20 V max* d.c.
Feed Speed	2–22" /min (50–560 mm/min)
Length of the rod	374 mm

\*Maximum battery voltage without workload; with workload nominal voltage is 18 V.

Recommend using tool with Mastercraft® 20 V max\* lithium-ion 4.0 Ah battery and PWR POD™ (054-7557-6 and 054-7564-8; sold separately) and higher capacity batteries for optimal performance.

### SAFETY GUIDELINES:



#### WARNING!

Safety symbols in this instruction manual are used to flag possible dangers. The safety symbols and their explanations require your full understanding. The safety warnings do not, by themselves, eliminate any danger, nor are they substitutes for proper accident prevention measures.



#### WARNING!

This Safety Alert Symbol indicates caution, warning, or danger. Failure to obey a safety warning can result in serious injury to yourself or others. To reduce the risk of injury, fire, or electric shock, always follow the safety precautions.

### KNOW YOUR TOOL

To operate this tool, carefully read this instruction manual and all labels affixed to the caulking gun before using. Keep this instruction manual available for future reference.

### IMPORTANT

This tool should only be serviced by a qualified service technician. For more information, call the toll-free helpline at 1-800-6 89-9928.

### READ ALL INSTRUCTIONS THOROUGHLY.

### SAVE THESE INSTRUCTIONS.

### GENERAL POWER TOOL SAFETY WARNINGS



#### WARNING!

**Read all safety warnings, instructions, illustrations and specifications provided with this power tool.** Failure to follow all instructions listed below may result in electric shock, fire and/or serious injury.

### SAVE ALL WARNINGS AND INSTRUCTIONS FOR FUTURE REFERENCE.

The term “power tool” in the warnings refers to your mains-operated (corded) power tool or battery-operated (cordless) power tool.

### WORK AREA SAFETY

- **Keep work area clean and well lit.** Cluttered or dark areas invite accidents.
- **Do not operate power tools in explosive atmospheres, such as in the presence of flammable liquids, gases or dust.** Power tools create sparks which may ignite the dust or fumes.

- **Keep children and bystanders away while operating a power tool.** Distractions can cause you to lose control.

## ELECTRICAL SAFETY

- **Power tool plugs must match the outlet. Never modify the plug in any way. Do not use any adaptor plugs with earthed (grounded) power tools.** Unmodified plugs and matching outlets will reduce risk of electric shock.
- **Avoid body contact with earthed or grounded surfaces, such as pipes, radiators, ranges and refrigerators.** There is an increased risk of electric shock if your body is earthed or grounded.
- **Do not expose power tools to rain or wet conditions.** Water entering a power tool will increase the risk of electric shock.
- **Do not abuse the cord. Never use the cord for carrying, pulling or unplugging the power tool. Keep cord away from heat, oil, sharp edges or moving parts.** Damaged or entangled cords increase the risk of electric shock.
- **When operating a power tool outdoors, use an extension cord suitable for outdoor use.** Use of a cord suitable for outdoor use reduces the risk of electric shock.
- **If operating a power tool in a damp location is unavoidable, use a ground fault circuit interrupter (GFCI) protected supply.** Use of a GFCI reduces the risk of electric shock.

## PERSONAL SAFETY

- **Stay alert, watch what you are doing and use common sense when operating a power tool. Do not use a power tool while you are tired or under the influence of drugs, alcohol or medication.** A moment of inattention while operating power tools may result in serious personal injury.
- **Use personal protective equipment. Always wear eye protection.** Protective equipment such as a dust mask, non-skid safety shoes, hard hat or hearing protection used for appropriate conditions will reduce personal injuries.
- **Prevent unintentional starting. Ensure the switch is in the off-position before connecting to power source and/or battery pack, picking up or carrying the tool.** Carrying power tools with your finger on the switch or energising power tools that have the switch on invites accidents.
- **Remove any adjusting key or wrench before turning the power tool on.** A wrench or a key left attached to a rotating part of the power tool may result in personal injury.
- **Do not overreach. Keep proper footing and balance at all times.** This enables better control of the power tool in unexpected situations.
- **Dress properly. Do not wear loose clothing or jewellery. Keep your hair and clothing away from moving parts.** Loose clothes, jewellery or long hair can be caught in moving parts.
- **If devices are provided for the connection of dust extraction and collection facilities, ensure these are connected and properly used.** Use of dust collection can reduce dust-related hazards.

- **Do not let familiarity gained from frequent use of tools allow you to become complacent and ignore tool safety principles.** A careless action can cause severe injury within a fraction of a second.

### POWER TOOL USE AND CARE

- **Do not force the power tool. Use the correct power tool for your application.** The correct power tool will do the job better and safer at the rate for which it was designed.
- **Do not use the power tool if the switch does not turn it on and off.** Any power tool that cannot be controlled with the switch is dangerous and must be repaired.
- **Disconnect the plug from the power source and/or remove the battery pack, if detachable, from the power tool before making any adjustments, changing accessories, or storing power tools.** Such preventive safety measures reduce the risk of starting the power tool accidentally.
- **Store idle power tools out of the reach of children and do not allow persons unfamiliar with the power tool or these instructions to operate the power tool.** Power tools are dangerous in the hands of untrained users.
- **Maintain power tools and accessories. Check for misalignment or binding of moving parts, breakage of parts and any other condition that may affect the power tool's operation. If damaged, have the power tool repaired before use.** Many accidents are caused by poorly maintained power tools.
- **Keep cutting tools sharp and clean.** Properly maintained cutting tools with sharp cutting edges are less likely to bind and are easier to control.
- **Use the power tool, accessories, tool bits, etc., in accordance with these instructions, taking into account the working conditions and the work to be performed.** Use of the power tool for operations different from those intended could result in a hazardous situation.
- **Keep handles and grasping surfaces dry, clean and free from oil and grease.** Slippery handles and grasping surfaces do not allow for safe handling and control of the tool in unexpected situations.

### BATTERY TOOL USE AND CARE

- **Recharge only with the charger specified by the manufacturer.** A charger that is suitable for one type of battery pack may create a risk of fire when used with another battery pack.
- **Use power tools only with specifically designated battery packs.** Use of any other battery packs may create a risk of injury and fire.
- **When battery pack is not in use, keep it away from other metal objects, like paper clips, coins, keys, nails, screws or other small metal objects, that can make a connection from one terminal to another.** Shorting the battery terminals together may cause burns or a fire.
- **Under abusive conditions, liquid may be ejected from the battery; avoid contact. If contact accidentally occurs, flush with water. If liquid contacts eyes, additionally seek medical help.** Liquid ejected from the battery may cause irritation or burns.

- **Do not use a battery pack or tool that is damaged or modified.** Damaged or modified batteries may exhibit unpredictable behaviour resulting in fire, explosion or risk of injury.
- **Do not expose a battery pack or tool to fire or excessive temperature.** Exposure to fire or temperature above 265°F (130°C) may cause explosion.
- **Follow all charging instructions and do not charge the battery pack or tool outside the temperature range specified in the instructions.** Charging improperly or at temperatures outside the specified range may damage the battery and increase the risk of fire.

## SERVICE

- **Have your power tool serviced by a qualified repair person using only identical replacement parts.** This will ensure that the safety of the power tool is maintained.
- **Never service damaged battery packs.** Service of battery packs should only be performed by the manufacturer or authorized service providers.

## ADDITIONAL SAFETY GUIDELINES FOR THE CAULKING GUN

- **The label on your tool may include the following symbols. The symbols and their definitions are as follows:**

V ..... Volts

A ..... Amperes

Hz ..... Hertz

W ..... Watts

 or d.c. ... Direct current

$n_0$  ..... No-load speed

SPM ..... Strokes per minute

min ..... Minutes



..... WARNING – To reduce the risk of injury, user must read instruction manual.



..... WARNING – To reduce the risk of injury, always wear ear protection.



..... WARNING – To reduce the risk of injury, always wear eye protection.



## WARNING!

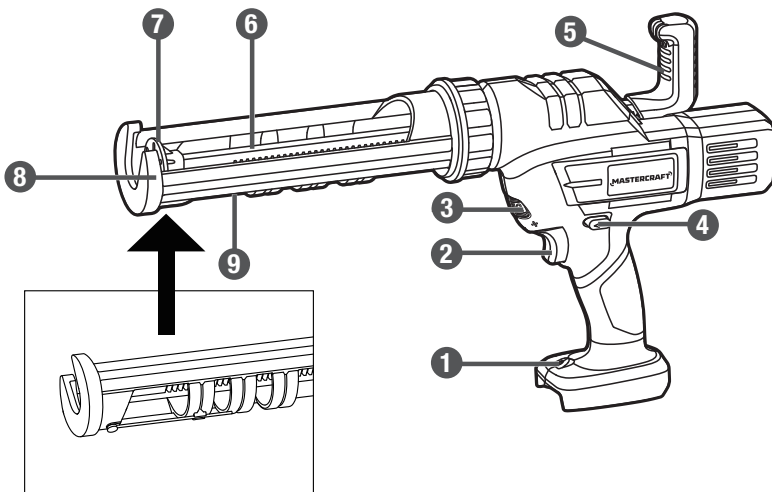
To reduce the risk of electric shock or damage to the charger and battery, use only the Mastercraft® and PWR POD™ batteries and chargers listed.

BATTERY PACK	CHARGER
Mastercraft® : 054-3124-0, 054-7553-4, 054-7557-6, 054-2434-8	Mastercraft® : 054-3126-6, 054-7559-2, 054-8299-4
PWR POD™ : 054-7563-0, 054-7564-8, 054-7558-4	PWR POD™ : 054-3126-6, 054-7565-6, 054-7567-2

- **For best results, your battery and tool should be charged, stored and used in a location where the temperature is more than 41°F (5°C) but less than 104°F (40°C).** Do not store outside or in vehicles.

**PACKAGE CONTENTS:**

Caulking gun, instruction manual.

**KEY PARTS DIAGRAM**

No.	Description
1	LED Work Light
2	Trigger Switch
3	Speed Adjusting Dial
4	Switch-lock Button
5	Plunger Rod Handle

No.	Description
6	Plunger Rod
7	Plunger
8	Carriage Frame
9	Puncture Tool

**WARNING!**

- Remove the caulking gun from the package and examine it carefully. Do not discard the carton or any packaging material until all parts have been examined.
- If any part of the caulking gun is missing or damaged, do not attach the tool to a power source or use the tool until the part has been repaired or replaced. Failure to heed this warning could result in serious injury.
- Do not allow familiarity with the caulking gun to cause a lack of alertness. A fraction of a second of carelessness is enough to cause severe injury.
- Do not use any attachments or accessories not recommended by the manufacturer of this product. The use of attachments or accessories not recommended can result in serious personal injury.

## OPERATING INSTRUCTIONS

### ATTACH THE BATTERY PACK (fig. 1)

1. Make sure that the caulking gun is switched off.
2. Align the raised rib on the battery pack with the grooves on the bottom of the tool, and then slide the battery pack onto the tool.

### DETACH THE BATTERY PACK (fig. 1)

1. Make sure that the caulking gun is switched off.
2. Press the battery-release button to release the battery pack.
3. Pull the battery pack to remove it from the tool.

**fig. 1**

Battery-release  
Button

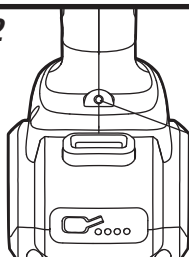


### LED WORK LIGHT (fig. 2)

The LED work light will illuminate when the trigger switch is depressed. This provides additional light on the surface of the workpiece. The light will automatically turn off after releasing the trigger switch.

**fig. 2**

LED Work  
Light



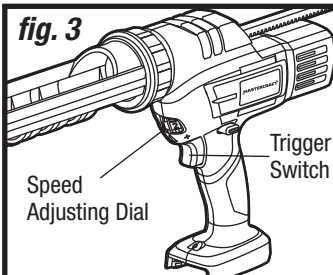
### VARIABLE-SPEED (fig. 3)

The speed adjusting dial has 6 levels which can provide variable speed for operation. Before using the caulking gun, turn the speed adjusting dial to level 1 and then set the speed adjusting dial to a best level during the caulking process.

**fig. 3**

Speed  
Adjusting Dial

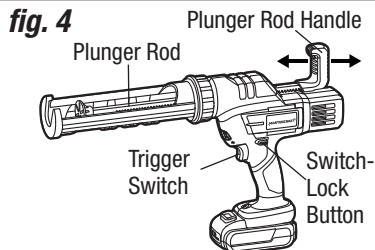
Trigger  
Switch



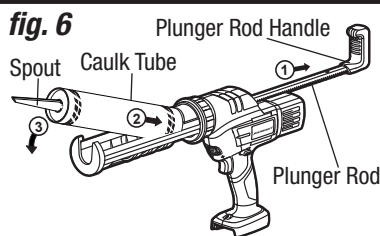
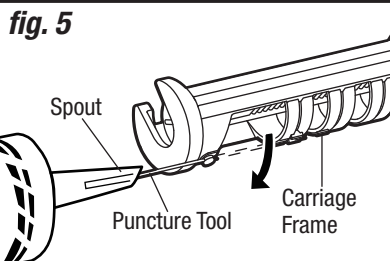
**NOTICE:** If you set a faster speed at the beginning, the sealant is drained too quickly during operation and stacked on an application surface.

**TO ADJUST THE PLUNGER ROD (fig. 4)**

When pushing the switch-lock button to the left, the plunger rod is in a free state. At this point, hold the plunger rod handle and move the plunger rod forward and backward.

**TO INSTALL THE CAULK TUBE (fig. 5, fig. 6)**

1. Cut off the spout of the caulk tube at a 45° angle. Remove as little as possible, taking into consideration the size of the “bead” of caulk you need.
2. Check the bottom of the spout for internal seals. If you find a seal, insert the puncture tool into the spout until the seal is broken before using the caulk tube. Puncture tool can be used to separate all hardened material from the spout when using a half-empty sealed caulk tube.
3. Make sure that there are no residues in the carriage frame.
4. As you grip the caulking gun tightly with one hand, pull back the plunger rod handle until the plunger rod reaches the rear of the carriage frame.
5. Place the caulk tube on the carriage frame to ensure that both ends of the caulk tube are firm.

**TO REMOVE THE CAULK TUBE (fig. 6)**

Push the switch-lock button to the left, hold the handle and pull the plunger rod. Take out the caulk tube.

### TO START/STOP THE TOOL (fig. 7)

1. To turn the tool ON, push the switch-lock button to the right and then depress the trigger switch.
2. To turn the tool OFF, just release the trigger switch.

### APPLICATION OF THE CAULKING GUN

This tool is intended only for applying caulking material to a surface, e.g., as a joint sealant.

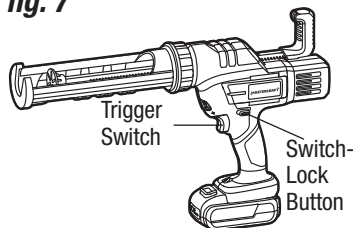
1. Sealing cracks to keep your home's conditioned air inside while keeping unconditioned air outside, increasing your home's energy efficiency.
2. Filling holes and cracks before painting.
3. Creating a moisture barrier around areas that could be damaged by water.
4. Sealing cracks to keep insects from crawling inside your home.
5. Applying adhesive.

### TO APPLY THE SEALANT (fig. 8)

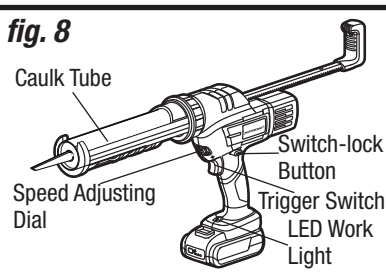
After pushing the switch-lock button to the right, the plunger rod is locked (can only be driven by the motor) and the switch is in the ready-to-use state.

1. Prepare the surface to be caulked by removing any dust, dirt, or remnants of old caulking. Make sure the area to be caulked is clean and dry.
2. Push switch-lock button to the right, press the trigger switch, push the plunger rod forward to apply the sealant, and then set speed control to the best level. Experiment in an out-of-the-way area to find the best speed to use to deliver the caulk bead you want.
3. Hold the gun at a slight angle. If filling a crack, insert the spout into the crack; otherwise, run the caulking gun along the surface. Make sure the caulk comes in full contact with both application surfaces. If necessary, use your finger to gently press the caulk into a corner or crack.
4. Release the switch before the caulk tube is empty; if the plunger rod is pushed forward by more than 2.5 mm, the plunger rod will slow down to 0 within 0.5 seconds and then move back about 2 mm; if not, the plunger rod will stop but without any backward movement.
5. If the switch is not released when the caulk tube is empty, the plunger rod will stop automatically and move back approximately 8 mm.
6. If the feed force of the plunger rod is greater than the set maximum feed force, the protection program is started: The plunger rod immediately stops pushing forward and moves back about 8 mm.
7. Draw a moistened finger or other smoothing tool along the caulk bead after applying. This will help the caulk adhere to the application surfaces and will create a clean, finished appearance.
8. Use a damp towel or rag to clean off any excess caulk.

**fig. 7**



**fig. 8**



**MAINTENANCE**

1. Inspect the caulking gun, the trigger switch and the accessories for damage.
2. Check for damaged, missing, or worn parts.
3. Check for loose screws, misalignment or binding of moving parts, or any other condition that may affect the operation.
4. If abnormal vibration or noise occurs, turn the tool off immediately and have the problem corrected before further use.
5. Detach the battery from the saw before cleaning or performing any maintenance. Using compressed air may be the most effective cleaning method. Always wear safety goggles when cleaning tools using compressed air.
6. Do not use petrol, benzene, thinner, alcohol or similar cleaning agents for cleaning.
7. The tool must always be kept clean and the sealant remaining on the tool must be cleaned to ensure that the tool is in good condition for the next use.
8. The remaining adhesive material may cause breakage of the tool.

**WARNING!**

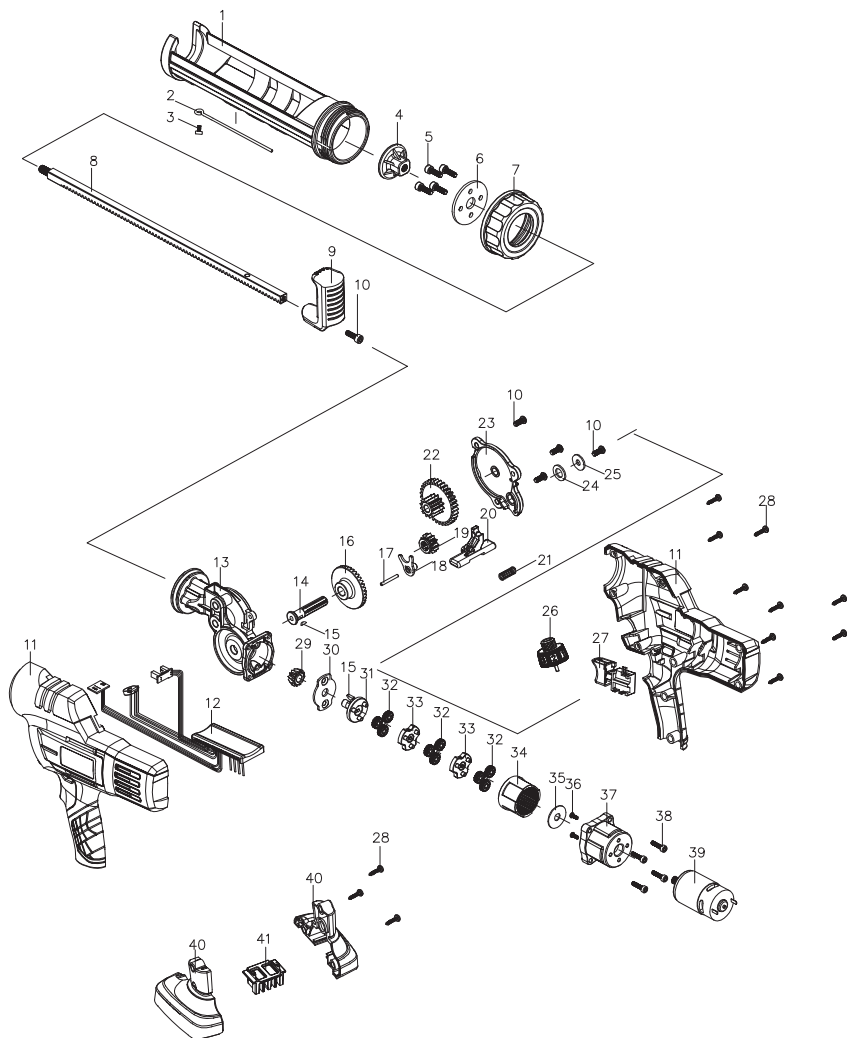
- Before attaching the battery pack to the tool, always check to determine that the switch performs properly and returns to the "OFF" position when released.
- Hold the tool only by the plastic handle and the insulated grip area to help prevent electric shock.
- Do not let brake fluids, gasoline, petroleum-based products, penetrating oil, etc., come into contact with plastic parts. These substances contain chemicals that can damage, weaken, or destroy plastic.
- When servicing, use only identical replacement parts. The use of any other parts may create a hazard or cause damage to the product.
- Use only accessories that are recommended for this caulking gun by the manufacturer. Accessories that may be suitable for one tool may become hazardous when used with another tool.
- To ensure safety and reliability, all repairs should be performed by a qualified service technician.

## TROUBLESHOOTING

Problem	Possible Causes	Solution
The tool does not work.	The battery is depleted.	Charge the battery.
	The tool or the battery is overloaded.	Decrease the load on the tool and restart the tool.
	The battery is overheated.	Cool the battery and restart the tool.

If the problem remains unresolved after performing the checks described above, call the toll-free helpline at 1-800-689-9928.

## EXPLODED VIEW



No.	Part No.	Description
1	0641169201	Cartridge holder
2	0641169202	Cleaning needle
3	0641169203	Screw 3×8
4	0641169204	Piston
5	0641169205	Screw M5×20
6	0641169206	Nut clamp
7	0641169207	Nut 62/Mounting collar
8	0641169208	Plunger rod
9	0641169209	Plunger rod handle
10	0641169210	Screw M5×12
11	0641169211	Left and right housing
12	0641169212	PCB
13	0641169213	Gear box assembly
14	0641169214	Axis
15	0641169215	Woodruff key 3×3.7×10
16	0641169216	Large bevel gear-37
17	0641169217	Cylindrical pin Ø3×25
18	0641169218	Clutch plate
19	0641169219	Clutch tooth-12
20	0641169220	Switch lock assembly
21	0641169221	Push rod spring

No.	Part No.	Description
22	0641169222	Combination of tooth-33/12
23	0641169223	Gear box cover
24	0641169224	Gasket Ø10×Ø18×1.6
25	0641169225	Gasket Ø8×Ø16×1.6
26	0641169226	Adjust knob
27	0641169227	Power switch
28	0641169228	Screw
29	0641169229	Small umbrella gear-12
30	0641169230	Gear plate
31	0641169231	Planetary gear rack 2
32	0641169232	Planetary gear-21
33	0641169233	Planetary gear rack 1
34	0641169234	Internal tooth-54
35	0641169235	Gasket Ø8×Ø26×1
36	0641169236	Screw M3×8
37	0641169237	Motor base
38	0641169238	Screw M4×16
39	0641169239	Motor
40	0641169240	Left and right battery connector
41	0641169241	Battery clip

If any parts are missing or damaged, or if you have any questions, please call the toll-free helpline at 1-800-689-9928.

This Mastercraft® product is guaranteed for a period of **3 years from the date of original retail purchase** against defects in workmanship and materials, except for the following components:

- a) Component A: Batteries, chargers and carrying case, which are guaranteed for a period of 2 years from the date of original retail purchase against defects in workmanship and materials;
- b) Component B: Accessories, which are guaranteed for a period of 1 year from the date of original retail purchase against defects in workmanship and materials.

Subject to the conditions and limitations described below, this product, if returned to us with proof of purchase within the stated warranty period and if covered under this warranty, will be repaired or replaced (with the same model, or one of equal value or specification), at our option. We will bear the cost of any repair or replacement and any costs of labour relating thereto.

**These warranties are subject to the following conditions and limitations:**

- a) a bill of sale verifying the purchase and purchase date must be provided;
- b) this warranty will not apply to any product or part thereof which is worn or broken or which has become inoperative due to abuse, misuse, accidental damage, neglect or lack of proper installation, operation or maintenance (as outlined in the applicable owner's manual or operating instructions) or which is being used for industrial, professional, commercial or rental purposes;
- c) this warranty will not apply to normal wear and tear or to expendable parts or accessories that may be supplied with the product that are expected to become inoperative or unusable after a reasonable period of use;
- d) this warranty will not apply to routine maintenance and consumable items such as, but not limited to, fuel, lubricants, vacuum bags, blades, belts, sandpaper, bits, fluids, tune-ups or adjustments;
- e) this warranty will not apply where damage is caused by repairs made or attempted by others (i.e., persons not authorized by the manufacturer);
- f) this warranty will not apply to any product that was sold to the original purchaser as a reconditioned or refurbished product (unless otherwise specified in writing);
- g) this warranty will not apply to any product or part thereof if any part from another manufacturer is installed therein or any repairs or alterations have been made or attempted by unauthorized persons;
- h) this warranty will not apply to normal deterioration of the exterior finish, such as, but not limited to, scratches, dents, paint chips, or to any corrosion or discolouring by heat, abrasive and chemical cleaners;
- i) this warranty will not apply to component parts sold by and identified as the product of another company, which shall be covered under the product manufacturer's warranty, if any.

## Additional Limitations

This warranty applies only to the original purchaser and may not be transferred. Neither the retailer nor the manufacturer shall be liable for any other expense, loss or damage, including, without limitation, any indirect, incidental, consequential or exemplary damages arising in connection with the sale, use or inability to use this product.

## Notice to Consumer

This warranty gives you specific legal rights, and you may have other rights, which may vary from province to province. The provisions contained in this warranty are not intended to limit, modify, take away from, disclaim or exclude any statutory warranties set forth in any applicable provincial or federal legislation.

Made in China

Imported by

Mastercraft Canada Toronto, Canada M4S 2B8

