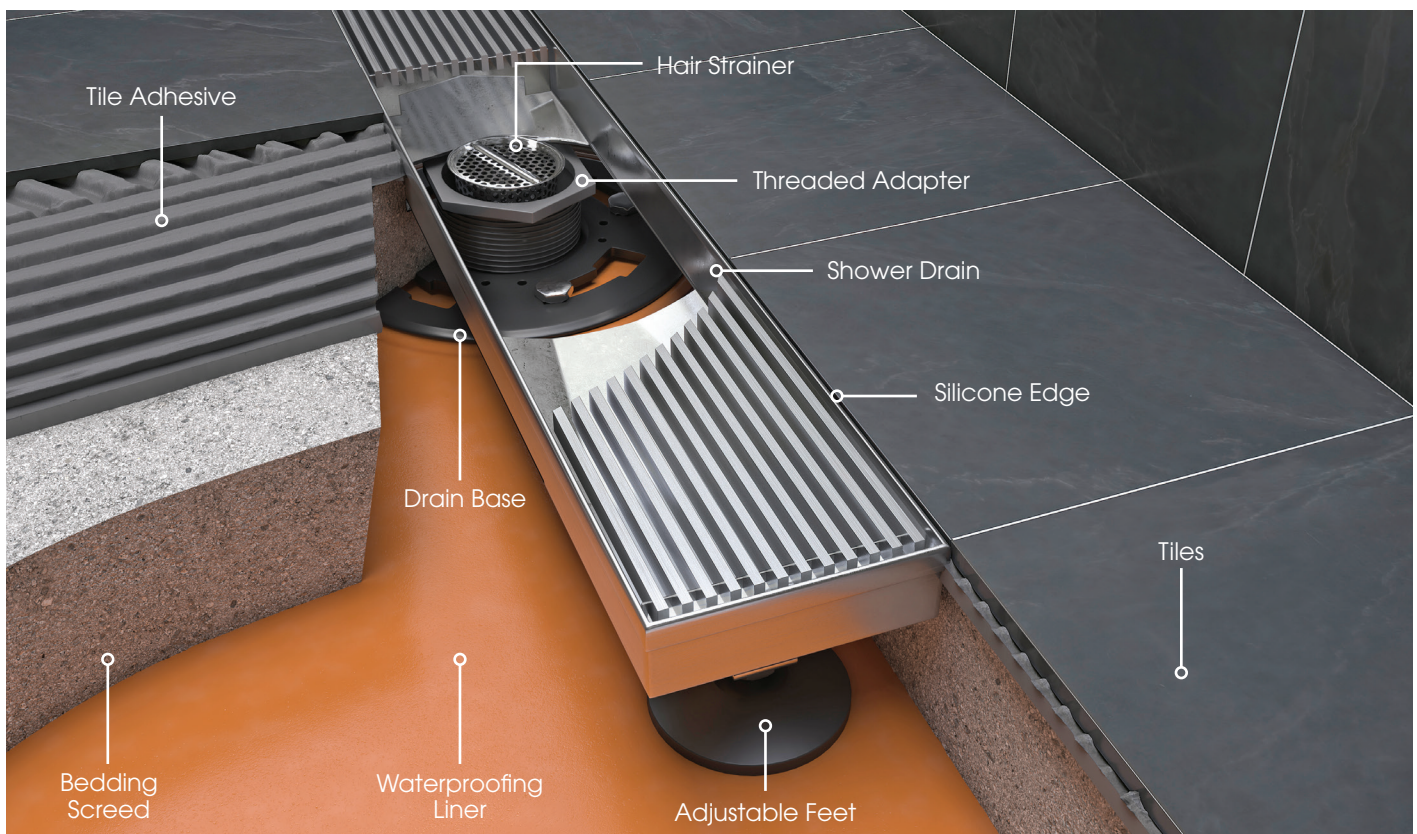


RELN Bathroom Collection

Installation Guide for Shower Drains

1. It is important to plan the location of your shower drain with your plumber prior to setting pipe work, as the waste pipe is located directly in the center of the grate. Set base of the drain in position. Apply a 1/4 inch bead of 100% silicon caulk to adhere the pan liner to the drain base.
2. Apply waterproofing pan liner, insert drain base clamping and tighten bolts. Place shower drain in desired position. Adjust leveling feet to ensure shower drain is level and at the required height, allowing for bedding screed, tile adhesive and tile thickness.
3. Use the shower drain as a template to create a cavity in the desired position.
4. Ensure grate is protected from scratching during the installation process by wrapping in plastic or masking tape. Apply bedding screed allowing for tile adhesive and tile thickness. Lay floor bed so it slopes towards the shower drain. Once floor bed is dry apply tiles.
5. Shower drain should sit just below face of tile and then joint filled with neutral cure silicone to complete.

Important Note: It is recommended that you remove the grate for regular cleaning.



Warranty

RELN Bathroom Collection will replace any drain that is found to be defective due to substandard materials and/or workmanship within the warranty period by contacting the store where you purchased your product. RELN will assess your claim based on the information provided. This warranty does not cover any installation or removal costs. The benefits given by this warranty are additional to other rights and remedies that you may have under laws relating to our products. You are entitled to a replacement or refund for a major failure and for compensation for any other reasonably foreseeable loss or damage. You are also entitled to have the goods replaced if the goods fail to be acceptable quality and the failure does not amount to a major failure.

Date of Issue: 07/2020

TRADE
APPROVED

WE MOVE WATER

RELN Shower Drain Collection

The RELN philosophy 'We Move Water' is so true about all our products, we take great pride in the performance of our Shower Drain Collection.

Drainage is more than just a way in which 'We Move Water' it is a visual design statement, our drainage collection are features within your bathroom.

The RELN Shower Drain Collection takes plumbing to the next level of design and function. A sophisticated and durable range that will enhance any bathroom.



PREMIUM GRADE
STAINLESS STEEL



MANUFACTURERS
WARRANTY



SUPERIOR FALL
WITH CENTRE OUTLET



PREMIUM QUALITY
MAINTENANCE FREE

FEATURES

- 304 Stainless Steel, corrosion resistant
- Designer grate options
- Fully assembled for installation ease
- Compatible with PVC and CPE waterproofing liners



AVAILABLE SIZES 24" | 28" | 32"

SHOWER DRAIN COLLECTION AVAILABLE

LINEAR - STAINLESS STEEL & MATTE BLACK | SQUARE - STAINLESS STEEL & MATTE BLACK | TILE INSERT - STAINLESS STEEL

SHOWER DRAIN INCLUSIONS

Hair Strainer

Collects any debris for
easy cleaning



Adjustable Feet

Quick and easy height and
leveling during installation



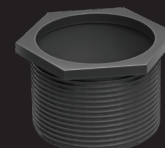
Lifting Key

For easy removal of grate
for cleaning



Threaded Adapter

Complete with O-ring for
sealing to drain base



relnproducts.com

RELN