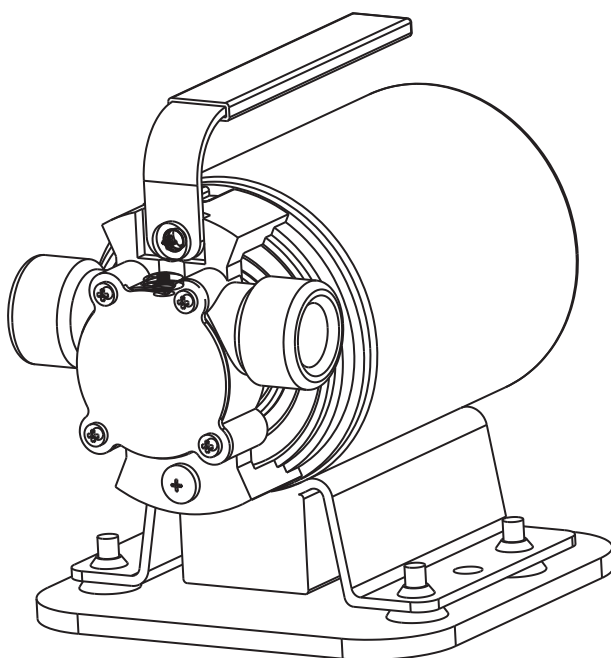


model no. 062-3422-0



Non-submersible
UTILITY TRANSFER PUMP



IMPORTANT:

Please read this manual carefully before running this pump and save it for reference.

**INSTRUCTION
MANUAL**

TABLE OF CONTENTS

Technical Specifications	4
Safety	5
Installation Instructions	7
Key Parts Diagram	9
Troubleshooting	10
Warranty	11

NOTE:

If any parts are missing or damaged, or if you have any questions, please call our toll-free helpline at 1-800-689-9928.



SAVE THESE INSTRUCTIONS

This manual contains important safety and operating instructions.
Read all instructions and follow them with use of this product.

model no. 062-3422-0 | contact us 1-800-689-9928

TECHNICAL SPECIFICATIONS

Model Number	062-3422-0
Voltage	12 V / DC
Horsepower	1/10 HP
Amps	15 A
Max. Head	46' (14 m)
Max. Flow	384 U.S. GPH (1454 L/h)
Discharge Size	3/4" (1.9 cm)
Power Cord Length	11.8' (3.6 m)

PERFORMANCE

0' (0 m)	10' (3 m)	20' (6.1 m)	30' (9.1 m)	40' (12.2 m)	Max. Head
384 GPH (1454 L/h)	345 GPH (1306 L/h)	296 GPH (1120 L/h)	211 GPH (799 L/h)	148 GPH (560 L/h)	46' (14 m)

For best performance, the maximum recommended hose length is 50' (15.2 m). The pumping capacity or water flow rate of any pump depends on several factors. The larger the inside diameter and the shorter the length of hose, the less pressure that is lost (or the larger the flow rate). If the hose runs uphill or is extra-long, use a larger diameter hose or rigid pipe.

SAFETY

WARNING

- This pump is not submersible! Do not stand in water while this pump is plugged in, and do not get the motor wet as it could cause electrocution, which could lead to serious injury or death.
- Always make sure the pump is unplugged as soon as the water level reaches 1/8" (3.2 mm). At water levels less than 1/8" (3.2 mm), the pump is attempting to pump air, which will cause the pump to overheat and wear out. Running the pump without sufficient water will damage the pump and void the pump's warranty.
- When the pump is running dry, it will be EXTREMELY LOUD. This is a sign to unplug the pump.
- You must use the included clear suction hose on the inlet of this pump, as marked on the pump.
- Always use the suction strainer included with this pump to prevent debris from damaging the pump.
- Do not pump flammable or explosive liquids such as oil, gasoline, kerosene, ethanol, etc. Do not use in the presence of flammable or explosive vapours. Using this pump with or near flammable liquids can cause an explosion or fire, resulting in property damage, serious personal injury and/or death.
- Always disconnect the pump from its power source before inspection.
- Do not stand in water when the pump is connected. Do not handle pump with wet hands.
- Do not touch the pump housing while it is operating, as the pump may be HOT and can cause serious skin burns.

CAUTION

- This pump is designed to pump only water. This pump is designed for portable applications. It can drain or remove water from the following: flooded areas, pool covers, clogged sinks, waterbeds, water basins, boats, stock tanks, etc. It can also be used to fill tanks or water beds. This pump has not been tested or approved for use in swimming pools or in salt-water marine areas. This pump should not be used as a replacement for a sump pump.
- This pump cannot be used in sewage applications. Doing so will void warranty.
- This pump is made of high-strength materials. It will provide trouble-free service for many years when properly installed, maintained, and used. However, inadequate electrical power to the pump, or blockage by ice, dirt, or debris may cause the pump to fail, potentially bringing about additional water damage. To minimize the potential for water damage due to pump failure, please read the section of this manual regarding common pump problems and remedies or call 1-800-689-9928.

ADDITIONAL SAFETY PRECAUTIONS

1. Know the pump applications, limitations, and potential hazards.
2. Make certain the electrical power source is adequate for the requirements of the pump.
3. ALWAYS disconnect the power to the pump and drain all water from the system before servicing.
4. Secure the pump on a solid base to prevent the pump from tipping over and possibly falling into the water.
5. Secure the discharge hose before starting the pump. Pump torque may cause an unsecured discharge hose to “whip”, possibly causing personal injury and/or property damage.
6. Before using the pump, check hose for holes or excess wear, which could cause leaks, and be sure hose is not kinked or making sharp angles. A straight hose allows the pump to move the greatest amount of water quickly.
7. Check that all hose connections are tight to minimize leaks. Ensure all hose washers are in place.
8. Connect the pump DIRECTLY to a grounded, GFCI outlet.
9. Extension cords may not deliver sufficient voltage to the pump motor. If an extension cord must be used, use no more than a 25' (7.6 m), 3-prong, 16 AWG, outdoor-grade cord.
10. Make certain the electrical circuit to the pump is protected by a 5 A minimum (15 A maximum) fuse or circuit breaker.
11. Periodically inspect pump and system components to be sure pump inlets are free of mud, sand, and debris. DISCONNECT PUMP FROM THE POWER SUPPLY BEFORE INSPECTING.
12. Wear safety glasses at all times when working with pumps.
13. Follow all electrical and safety codes, particularly the National Electrical Code (NEC) or the Canadian Electrical Code (CEC), and in the workplace, the Occupational Safety and Health Act (OSHA) or the Canadian Centre for Occupational Health and Safety (CCOHS).
14. This unit is designed only for use on 115 V (single phase), 60 Hz, and is equipped with an approved 3-conductor cord and 3-prong grounded plug. DO NOT REMOVE THE GROUND PIN UNDER ANY CIRCUMSTANCES. The 3-prong plug must be directly inserted into a properly installed and grounded 3-prong, grounding-type receptacle. Do not use pump with a 2-prong wall outlet. Replace the 2-prong outlet with a properly grounded 3-prong receptacle (a GFCI outlet) installed in accordance with the NEC or CEC and local codes and ordinances. All wiring should be performed by a qualified electrician.
15. Protect the electrical cord from sharp objects, hot surfaces, oil, and chemicals.

INSTALLATION PREPARATION

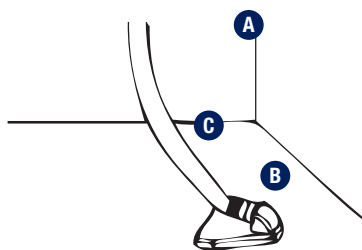
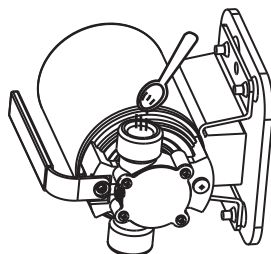
Estimated Assembly Time (new installation): 5 minutes

Materials Required for Assembly (not included): Garden Hose (50'/15.2 m max. length)

Do not suspend the pump by the discharge hose or power cord.

- Keep the pump suction strainer clear.
- Do not install pump directly on sand or dirt.

- 1 Add water (approximately 1 – 2 Tbsp/15 – 30 mL) into inlet to wet the impeller of the pump (A).



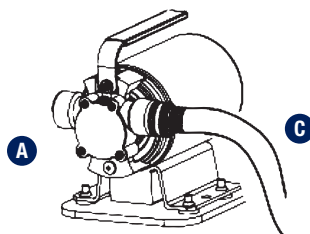
- 2 Attach suction hose (C) by pushing the male threaded end into the rubber suction strainer (B). Then, place the strainer in at least 1/2" (12.7 mm) of water at the lowest point to be pumped.

NOTICE: Make sure the connection is airtight. An air leak can cause the pump (A) to run dry.

- 3 Thread the other end of the suction hose (C) to the suction inlet of the pump (A).

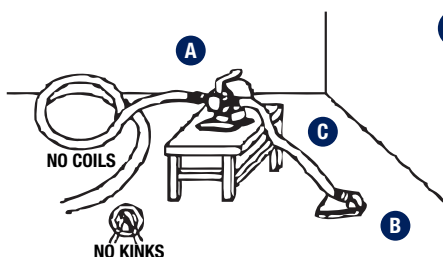
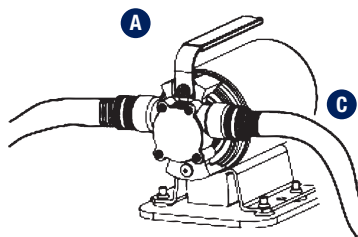
NOTICE: Always ensure the washer in the hose bib is not damaged. An airtight seal is necessary for this pump to operate.

Make sure the suction hose (C) and suction strainer (B) are in the water before plugging in the pump (A).



- 4** Thread a 5/8" (15.9 mm) or larger garden hose (sold separately, 50'/15.2 m max. length) onto the discharge outlet of the pump (A).

NOTICE: Make sure the end of the outlet hose is not under water. If the outlet is under water, the pump may not work.



- 5** Attach the pump (A) to a sturdy base (table, board, etc.) to prevent it from tipping over. Make sure the hoses are as straight as possible.

NOTICE: DO NOT coil or kink the hoses.



WARNING:

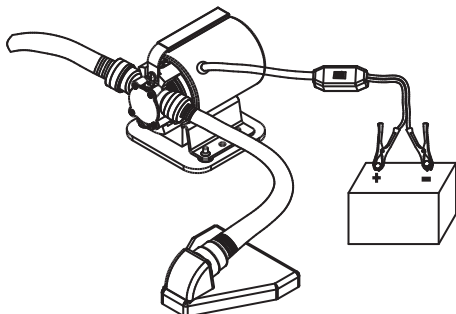
This pump CANNOT be submersed in water, and the motor CANNOT get wet at all. Getting the motor wet could cause electrocution, which could lead to serious injury or death!

- 6** This equipment is only for use with an automotive, tractor or marine type battery fully charged to 12 V DC. Battery current can cause severe burns and start a fire if the battery is short circuited. Battery posts, terminals and related accessories contain lead and lead compounds, chemicals known to cause cancer and reproductive harm. Wash hands after handling.

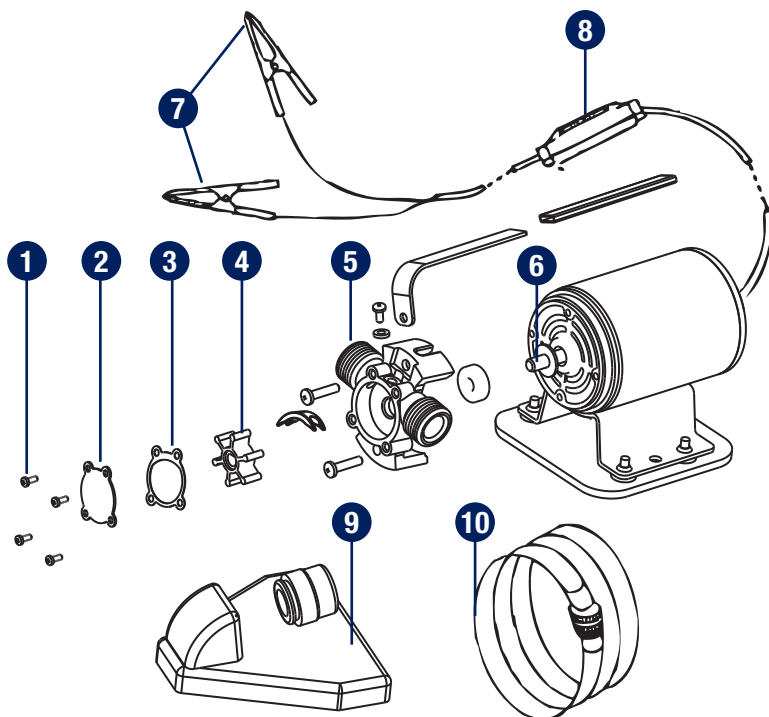
Use insulated crimp type connectors.

Connect pump to power source. Connect the red clamp to the positive (+) type battery terminal. Connect the black clamp to the negative (-) type battery terminal.

Power Supply: The pump is designed for use with a 12 V DC battery. Operation requires a minimum 12 V power supply.



KEY PARTS DIAGRAM



PARTS LIST

No.	Description	No.	Description
1	Screw	6	Shaft
2	Impeller cover	7	Battery terminal clamps
3	O-ring	8	Power switch
4	Impeller	9	Suction strainer
5	Pump body	10	Suction hose

TROUBLESHOOTING

Problem	Possible Cause	Corrective Action
The pump stops without warning.	<ol style="list-style-type: none"> 1. The cord set is loose. 2. The fuse is blown. 3. The battery has no charge. 	<ol style="list-style-type: none"> 1. Reconnect the cable. 2. Replace the fuse. 3. Recharge the battery or replace it with a new battery.
The pump does not prime.	<ol style="list-style-type: none"> 1. The impeller is worn. 2. The suction is leaking. 3. The suction hose is kinked or coiled. 	<ol style="list-style-type: none"> 1. Replace the impeller. 2. Replace the hose washer and check for leaks in the hose. 3. Straighten out the suction hose.
The pump leaks.	<ol style="list-style-type: none"> 1. The shaft seal is leaking. 2. The cover O-ring is leaking. 	<ol style="list-style-type: none"> 1. Replace the pump. 2. Reassemble the cover O-ring.
The pump runs but pumps little or no water.	<ol style="list-style-type: none"> 1. The impeller is worn. 2. The suction or discharge hose is kinked or coiled. 	<ol style="list-style-type: none"> 1. Replace the impeller. 2. Straighten out the hose.

NOTE

Do not disassemble the motor housing of the pump. This pump has NO repairable internal parts, and disassembling may cause a dangerous electrical wiring conditions.

WARRANTY

PLEASE DO NOT ATTEMPT TO OPEN OR REPAIR THE PUMP YOURSELF. DOING SO
COULD VOID THE WARRANTY AND CAUSE DAMAGE OR PERSONAL INJURY.

This Mastercraft product carries a three (3) year LIMITED warranty against defects in
workmanship and materials. This product is not guaranteed against wear or breakage
due to misuse and/or abuse.

Made in China

Imported by

Mastercraft Canada Toronto, Canada M4S 2B8