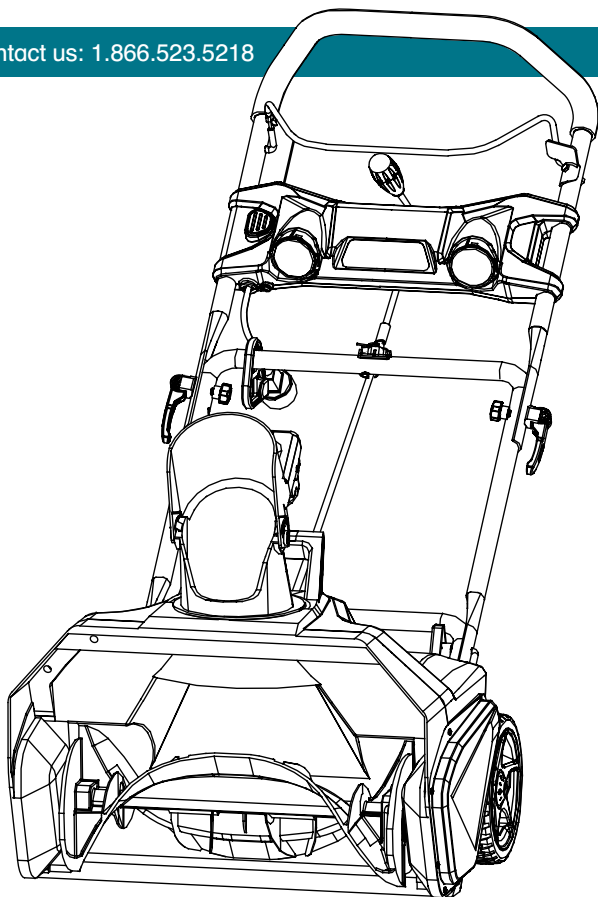




# YARDWORKS<sup>TM/MC</sup>

## Electric Snow Thrower

model number 060-3999-2 | contact us: 1.866.523.5218



### IMPORTANT:

Read and follow all safety rules and operating instructions before using this product.

**Operator's  
Manual**

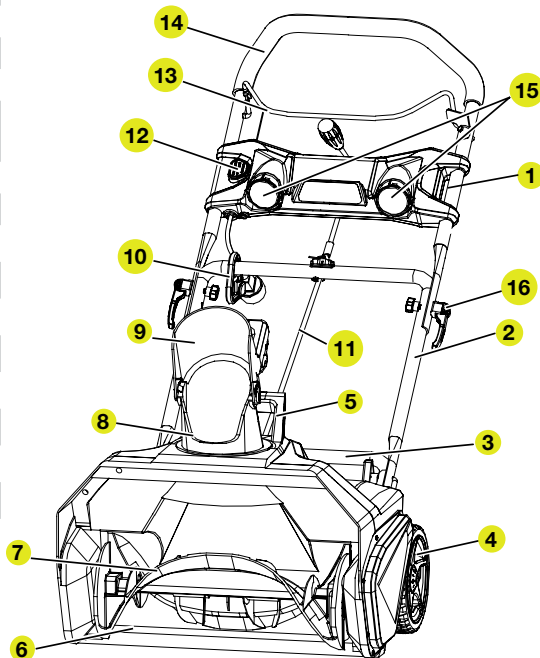
SPECIFICATIONS	2
KNOW YOUR THROWER	3
SYMBOLS	4
SAFETY INFORMATION	5
ELECTRICAL	9
EXPLODED VIEW	11
PARTS LIST	12
ASSEMBLY	15
OPERATION	19
MAINTENANCE	24
TROUBLESHOOTING	28
WARRANTY	29

Motor:	120 V, 60 Hz, 13 A
Blade speed:	Up to 2,400 RPM
Clearing width:	20" (50.8 cm)
Clearing depth:	10" (25.4 cm)
Discharge distance:	Up to 25' (7.6 m)
Impeller size:	16" (40.6 cm)
Wheels:	7" (17.7 cm)
Weight:	36 lb (16.3 kg)



model no. 060-3999-2 | contact us: 1.866.523.5218

1. Upper handle
2. Middle handle
3. Lower handle
4. Wheel
5. Carrying or lifting handle (for transport only)
6. Scraper
7. Impeller
8. Discharge chute
9. Chute deflector
10. Cord retainer
11. Chute control rod
12. Safety switch button
13. ON/OFF switch bar lever
14. Handle bar
15. LED lights
16. Cam locks



Know Your Mower

## KNOW YOUR THROWER

- Carefully remove the product and any accessories from the box. Make sure that all items listed in the packing list are included.
- Inspect the product carefully to make sure no breakage or damage occurred during shipping.
- Do not discard the packing material until you have carefully inspected and satisfactorily operated the product.
- If any parts are damaged or missing, please call 1.866.523.5218 for assistance.










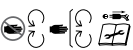



**WARNING:** If any parts are damaged or missing, do not operate this product until the parts are replaced. Using a product with damaged or missing parts could result in serious personal injury.



**WARNING:** Do not attempt to modify this product or create accessories not recommended for use with this product. Any such alteration or modification is misuse and could result in a hazardous condition leading to possible serious personal injury.

Some of the following symbols may be used on this product. Please study them and learn their meaning. Proper interpretation of these symbols will allow you to operate the product better and more safely.

Symbol	Designation/Explanation
V	Voltage
A	Current
Hz	Frequency (cycles per second)
min	Time
AC	Alternating current
RPM	Revolutions per minute
cm	Centimetre
kg	Kilogram
	Double-insulated construction
/min	Revolutions, strokes, surface speed, orbits etc., per minute.
	Indicates a potential personal injury hazard.
	To reduce the risk of injury, user must read and understand operator's manual before using this product.
	Always wear proper eye and hearing protection.
	Stop the machine before leaving the machine.
	Thrown objects can ricochet and result in personal injury or property damage.
	Danger – Keep hands and feet away from spinning impeller. Spinning impeller can cause severe injury.
	Keep hands, feet away from the discharge area.
	Keep bystanders a safe distance from the machine.
	Stay away from moving parts, keep all guards and shields in place. Disconnect power cord from power source and read the instructions before servicing or performing maintenance.
	Do not use a damaged power cord.

## GENERAL SAFETY RULES

### READ ALL INSTRUCTIONS CAREFULLY

- Read the instructions carefully. Become familiar with the controls and the proper use of the snow thrower.
- Do not operate this snow thrower when tired, ill, or under the influence of alcohol, drugs, or medication.
- Do not allow children under the age of 14 to operate this snow thrower. Children who are 14 years of age and older must read the operating instructions and the safety rules in this manual carefully and understand them thoroughly, and must be trained and supervised by a parent.
- Inspect the snow thrower before use. Replace any damaged parts. Verify that all fasteners are in place and secure. Replace any parts that are cracked, chipped, or damaged in any way.
- Exercise caution in order to avoid slipping or falling.
- Thoroughly inspect the area where the snow thrower will be used. Remove doormats, sleds, boards, wires, debris, and other foreign objects that may be thrown by the snow thrower.
- Verify that the impeller will be able to spin freely before turning the snow thrower on.
- Dress properly. Wear adequate winter outerwear. Wear long heavy pants, boots, gloves, and long sleeves. Do not wear loose clothing, jewellery, short pants, or sandals. Do not operate this snow thrower when barefoot. Secure hair above shoulder level.
- When operating the snow thrower, wear footwear that does not leak and that will improve footing on slippery surfaces. Wear rubber-soled boots.
- Do not attempt to make adjustments while the motor is running.
- Allow the motor and the snow thrower to adjust to outdoor temperatures before beginning to clear snow.
- Wear safety glasses/shields or goggles at all times while operating or performing adjustments or repairs in order to protect the eyes from foreign objects that may be thrown by the snow thrower.



**WARNING: Follow the safety rules closely when using the snow thrower. In order to ensure the safety of the operator and any bystanders, read these instructions carefully before using the snow thrower. Keep these instructions in a safe place for future reference.**

**FOLLOW THESE RULES WHILE OPERATING THE SNOW THROWER**

- Walk. Do not run.
- Verify that the snow thrower is not in contact with anything before turning it on.
- Stay away from the discharge chute and impeller openings at all times. Keep face, hands, and feet away from concealed, moving, or rotating parts.
- Be attentive when using the snow thrower, and stay alert for holes in the terrain and other hidden hazards or traffic.
- Do not use the snow thrower on a gravel or crushed rock surface. Use extreme caution when crossing gravel/crushed rock drives, walks, or roads.
- Move up and down slopes when clearing snow. Do not go across a slope. Use caution when changing direction. Do not use this snow thrower to clear snow from steep slopes.
- Do not attempt to use the snow thrower on a roof or on any steeply-inclined, slippery surface.
- Do not operate the snow thrower if the guards, plates, and other safety protective devices are not in place.
- Do not operate the snow thrower near glass enclosures, automobiles, trucks, window wells, drop-offs, etc. without properly adjusting the angle of the snow discharge. Keep children and pets away from the work area.
- Do not force or overload the snow thrower. The snow thrower will perform better and more safely when it is used at the rate for which it was designed.
- Do not operate the snow thrower at high speeds on slippery surfaces. Look behind when backing up and exercise caution.
- Do not direct the discharge toward anyone. Do not allow anyone to move in front of the snow thrower while it is in use.
- Wear safety glasses or goggles that meet ANSI Z87.1 standards, and wear ear/hearing protection when using this snow thrower.
- Use the snow thrower in daylight or in good artificial light.
- To avoid accidental start-ups, remain in the starting position when turning the snow thrower on.
- The operator and the snow thrower must be in a stable position during start-up.
- Use this snow thrower only for the purposes for which it was designed.
- Do not overreach. Always keep proper footing and balance.
- Hold the snow thrower with both hands while it is in use. Keep a firm grip on the handles.
- If the impeller does not rotate freely due to frozen ice, thaw the snow thrower thoroughly before attempting to use it.
- Keep the impeller clear of debris.
- Do not attempt to clear the impeller while the motor is running or while the snow thrower is plugged in. Turn the motor off and unplug the snow thrower from the extension cord or the outlet.
- Keep clothing and body parts away from the impeller.
- Stop the motor when stopped or when moving from one location to another.
- Unplug the snow thrower when it is being transported and when it is not in use.



model no. 060-3999-2 | contact us: 1.866.523.5218

- After striking a foreign object, turn the snow thrower off and unplug it, and then inspect it for damage. Repair any damage before restarting and using the snow thrower.
- If the snow thrower starts to vibrate abnormally, stop the snow thrower immediately and attempt to determine the cause. Vibration is generally an indication of danger.
- Stop the motor and unplug the snow thrower whenever the operator is not in the operating position, before unclogging the impeller, and before making any repairs, adjustments, or inspections.
- Do not discharge snow onto public roads or near moving traffic.
- Allow the snow thrower to run for a few minutes after clearing snow in order to prevent moving parts from freezing.
- Only use identical replacement parts and accessories for this snow thrower. The use of nonidentical parts or accessories could lead to serious injury to the user or damage the snow thrower and will void the warranty.
- Do not pick up the snow thrower while it is plugged in and running. The snow thrower is designed to travel along the ground.
- Dress Properly – Do not wear loose clothing or jewellery. They can be caught in moving parts.
- Wear rubber boots when operating the snow thrower.
- Operation of the snow thrower in the hand-held position is unsafe, except in accordance with the special instructions for such use provided in the operator's manual.
- Store Idle Snow Throwers Indoors – When not in use, snow throwers should be stored indoors in dry, locked-up place – out of reach of children.

**OTHER SAFETY WARNINGS**

- Verify that the snow thrower is secure while transporting.
- Store the snow thrower in a dry area that will prevent unauthorized use or damage. Keep out of the reach of children.
- Keep handles dry, clean, and free of debris. Clean the snow thrower after each use. Refer to Maintenance section in this manual for more information.
- If the labels on the snow thrower become defaced or start to lift off, contact the toll-free helpline at 1.866.523.5218.
- Keep these instructions in a safe place for future reference. Refer to them often, and use them to instruct other users. Anyone who uses this snow thrower must read these instructions carefully.
- Maintain the snow thrower with care. Follow the instructions for lubricating and changing accessories.

## DOUBLE INSULATION

Double insulation is a concept in safety in electric power tools which eliminates the need for the usual three-wire grounded power cord. All exposed metal parts are isolated from the internal metal motor components with protecting insulation. Double-insulated tools do not need to be grounded.

## ELECTRICAL CONNECTION

This product has a precision-built electric motor. It should be connected to a power supply that is 120 volts, 60 Hz, AC only (normal household current). Do not operate this product on direct current (DC). A substantial voltage drop will cause a loss of power and the motor will overheat. If the product does not operate when plugged into an outlet, double-check the power supply.

## EXTENSION CORDS

When using a power tool at a considerable distance from a power source, be sure to use an extension cord that has the capacity to handle the current the product will draw. An undersized cord will cause a drop in line voltage, resulting in overheating and loss of power. Use the chart to determine the minimum wire size required in an extension cord. Only round-jacketed cords listed by Underwriter's Laboratories (UL) should be used.

When working outdoors with a product, use an extension cord that is designed for outside use. This type of cord is designated with "WA" on the cord's jacket.

Before using any extension cord, inspect it for loose or exposed wires and cut or worn insulation. It is possible to tie the extension cord and power cord in a knot to prevent them from becoming disconnected during use. Make the knot as shown in the following figure, then connect the plug end of the power cord into the receptacle end of the extension cord. This method can also be used to tie two extension cords together.

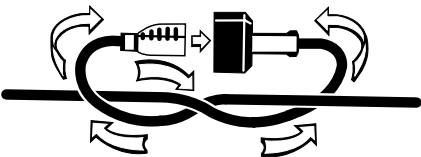


**WARNING: The double-insulated system is intended to protect the user from shock resulting from a break in the tool's internal insulation. Observe all normal safety precautions to avoid electrical shock.**



**WARNING: Servicing of a product with double insulation requires extreme care and knowledge of the system and should be performed only by a qualified service technician. For service, we suggest you return the product to your nearest authorized service centre for repair. Always use identical factory replacement parts when servicing.**

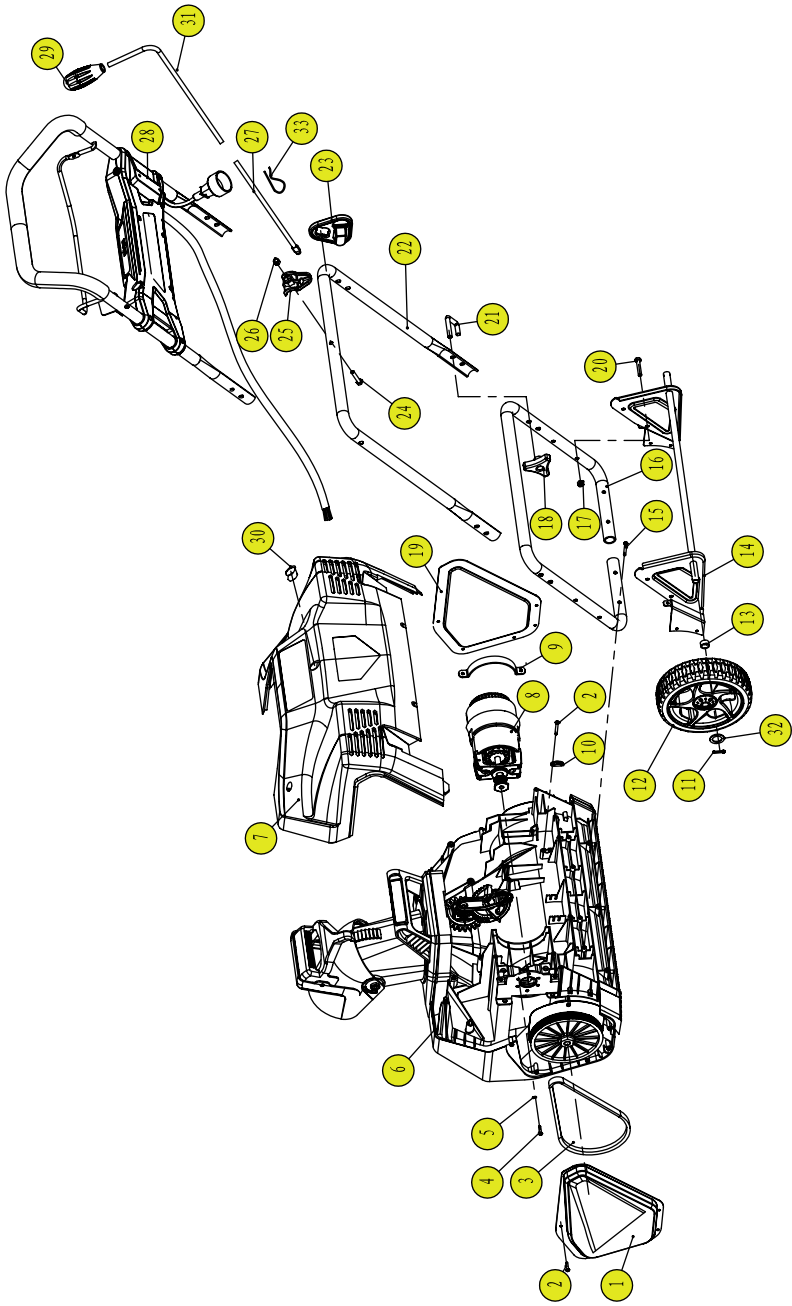
- Inspect the extension cord and the power cord on a regular basis. Look for deterioration, cuts, or cracks in the insulation. Inspect the connections for damage. Repair or replace the extension cord or the power cord if any damage is found.
- Verify that the impeller and all moving parts have come to a complete stop, and disconnect the snow thrower from the power supply in order to prevent accidental start-ups, before cleaning or performing any inspections or repairs.
- Do not abuse the extension cord. Do not carry the snow thrower by the power cord or pull on the cord in order to disconnect it from the receptacle.
- Keep the extension cord away from heat, oil, and sharp edges in order to prevent damage.
- If the extension cord is damaged in any manner while it is plugged in, disconnect it from the outlet immediately.
- Prevent any possible disconnection of the power cord from the extension cord while the snow thrower is in use by using the cord retainer. Refer to the section entitled Using the Cord Retainer.
- Unplug the snow thrower and allow it to cool down before putting it into storage. Store the snow thrower indoors.
- Unplug the snow thrower when it is not in use and before performing any maintenance or repairs.



**Ampere rating (on product data plate)						
	0-2.0	2.1-3.4	3.5-5.0	5.1-7.0	7.1-12.0	12.1-16.0
Cord Length	Wire Size (A.W.G.)					
25'	16	16	16	16	14	14
50'	16	16	16	14	14	12
100'	16	16	14	12	12	—
**Used on 12 gauge - 20 amp circuit. NOTE: AWG = American Wire Gauge						

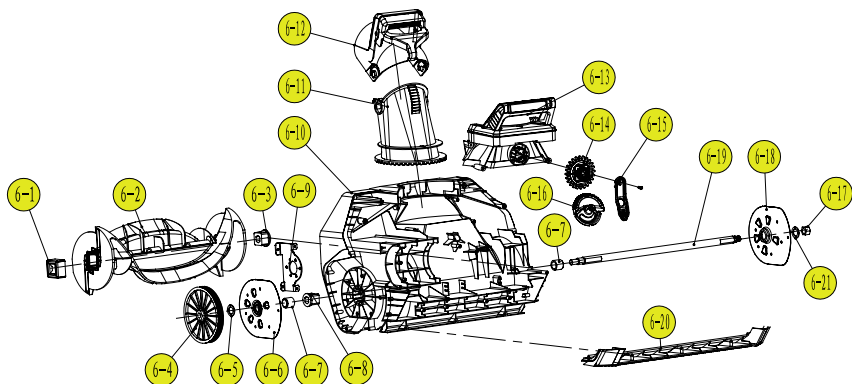
**! WARNING:** Keep the extension cord clear of the working area. Position the cord so that it will not get caught on lumber, tools, or other obstructions while you are working with a power tool. Failure to do so can result in serious personal injury.

SAVE THESE INSTRUCTIONS!



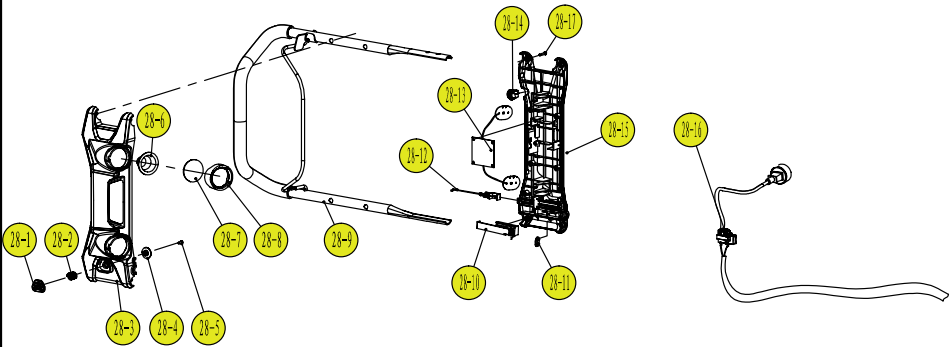
Item	Description	Drawing	Qty
1	Left side cover	332041205AB	1
2	Screw	32205877	20
3	Belt	329151205	1
4	Screw (M5 × 15)	32203100	4
5	Washer	3290250	4
6	Front cover assembly	311071472	1
7	Rear cover	341021205AE	1
8	Motor	361011210	1
9	Motor clamp	332101210	1
10	Wire clamp	3410801	1
11	Split pin	3290135	2
12	7" (17.7 cm) wheel assembly	311071472	2
13	Rubber sleeve	332151205	2
14	Wheel bracket assembly	332021205	1
15	Screw	32201699	4
16	Lower handle	333031205AB	1
17	Nut M6	32222301A	4
18	Knob	3410835-19	4
19	Right side cover	332051205AB	1
20	Bolt (M6 x 35)	32204234	4
21	U bolt	333041205	4
22	Middle handle	333021205AB	1
23	Cord retainer	34120227	1
24	Screw	32215301A	1
25	Bracket for the chute control rod	341131205AB	1
26	Nut	32219121	1
27	Lower chute control rod	333011463AB	1
28	Handle bar assembly	311031472	1
29	Handle for the chute control rod	311091472	1
30	Rubber bushing for the chute control rod	342011205	1
31	Upper chute control rod	333031463AB	1
32	Washer	3220898	2
33	Hitch pin	322011463	1

model no. 060-3999-2 | contact us: 1.866.523.5218



Item	Description	Drawing	Qty
6	Front cover assembly	311071472	1
6-1	Link block	332061205	1
6-2	Impeller	341171205AB	1
6-3	Right driving block	339011205	1
6-4	Drive wheel	34109100-12	1
6-5	Washer	32217100	1
6-6	Left side plate	311071216	1
6-7	Bushing	332111205	2
6-8	Left driving block	339021205	1
6-9	Motor support	332011206	1
6-10	Front cover	341011205AC	1
6-11	Discharge chute	341031205AB	1
6-12	Chute deflector	311061472	1
6-13	Discharge chute seat	341061205AC	1
6-14	Small gear	341071205	1
6-15	Gear seat	341091205	1
6-16	Big gear	341081205	1
6-17	Nut M12	322021205	1
6-18	Right side plate	311081216	1
6-19	Axle for the impeller	332121464	1
6-20	Scraper	341111205AB	1
6-21	Washer	3220898	3

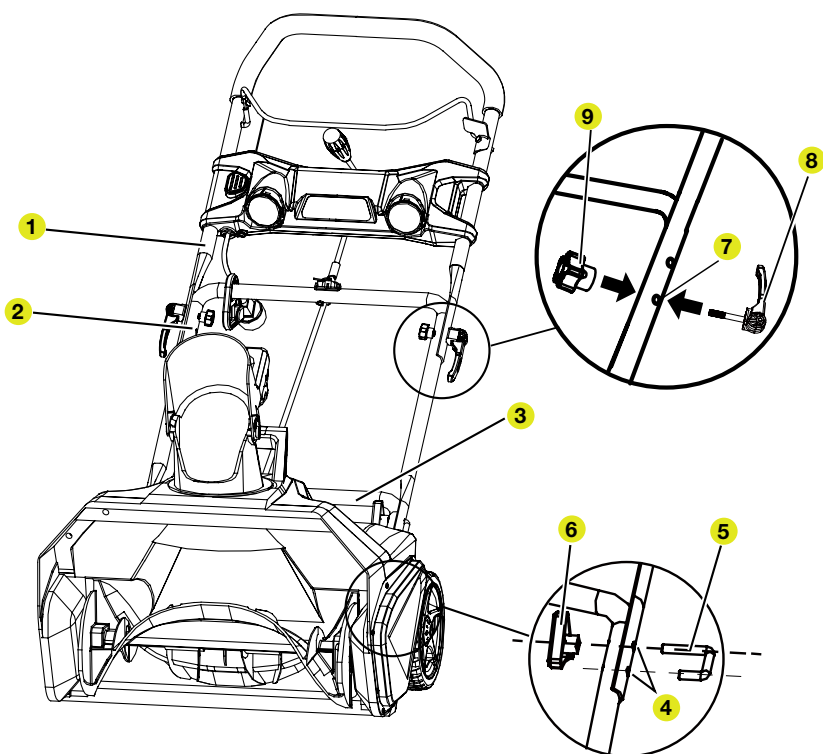
Parts List



Item	Description	Drawing	Qty
28	Handle bar assembly	311031472	1
28-1	Safety switch button	34136486AC	1
28-2	Spring	33401229A	1
28-3	Faceplate	341141205AB	1
28-4	Switch pressure head	341201205	1
28-5	Screw	32210302A	1
28-6	Parabolic reflector	333011108	2
28-7	Lamp screen	341051108	2
28-8	Light head housing	341061108AC	2
28-9	Upper handle assembly	311101472	1
28-10	Slider block assembly	311081205	1
28-11	Wire clamp	3410801	2
28-12	Start cable	311091205	1
28-13	Circuit board	362011201	1
28-14	Switch	363051205	1
28-15	Lower cover	341151205AB	1
28-16	Cord plug assembly	311101206	1
28-17	Screw	32205877	12

**ASSEMBLING THE HANDLE**

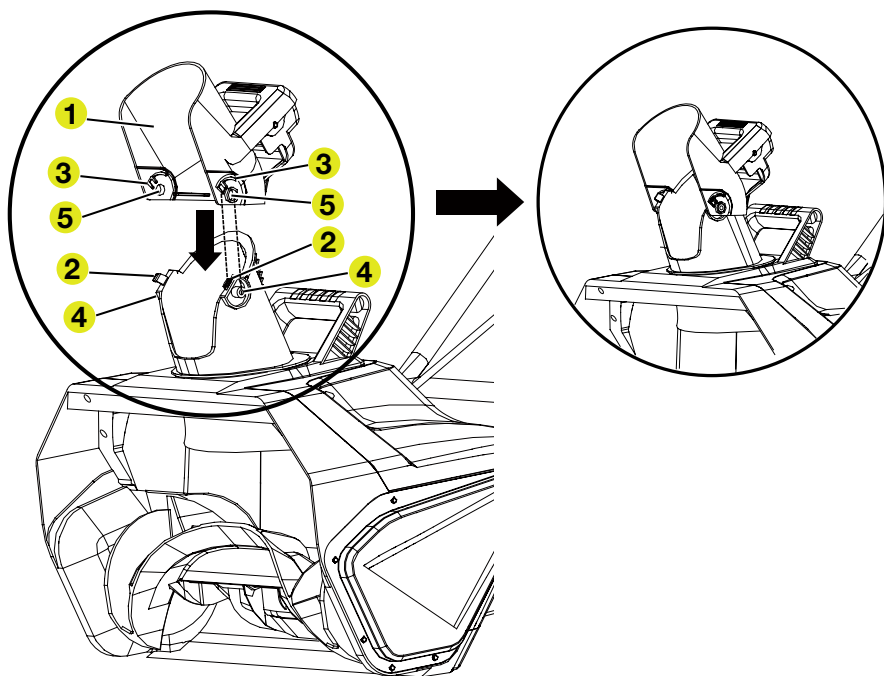
- Align the holes (4) on the middle handle (2) and the lower handle (3). Insert the bolts (5), and use the handle knobs (6) to tighten them.
- Align the hole (7) on the middle handle (2) and the upper handle (1). Insert the cam locks (8) and tighten them with the handle knobs (9) provided. Once tightened, close the cam locks to secure them in place.



**NOTE:** If the upper handle is loose or separated from the middle handle, tighten the cam lock handle knobs by turning them clockwise. Do not overtighten the handle knobs.

**ASSEMBLING THE DISCHARGE CHUTE**

- Push the chute deflector (1) until the latching tabs (2) on either side click into the restricted slots (3) and the posts (4) on either side click into the keyed holes (5).

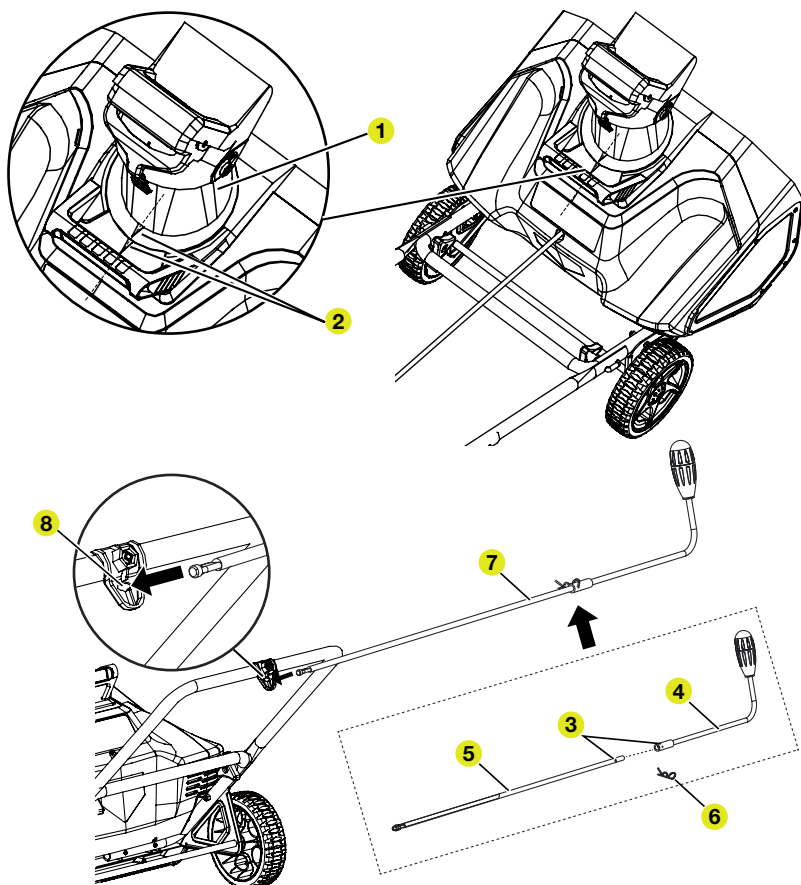


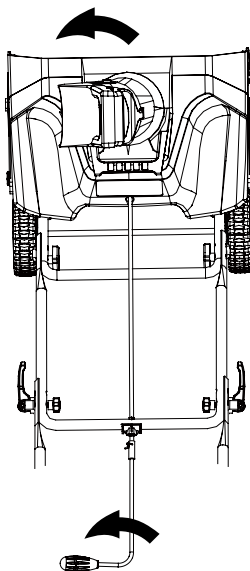
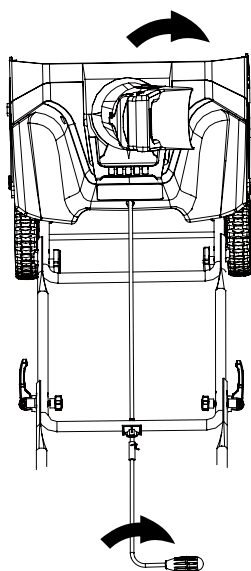
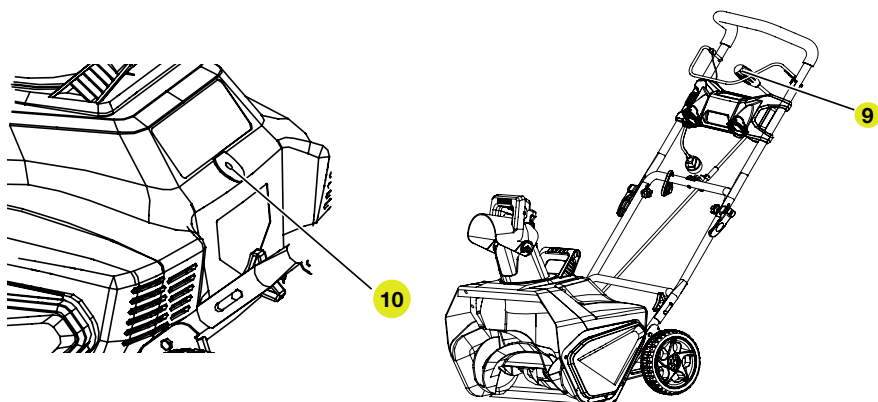
**INSTALLING THE CHUTE CONTROL ROD**

- Position the discharge chute (1) so that it faces forward.

**NOTE: Align the arrow (2) on the discharge chute with the arrow on the housing.**

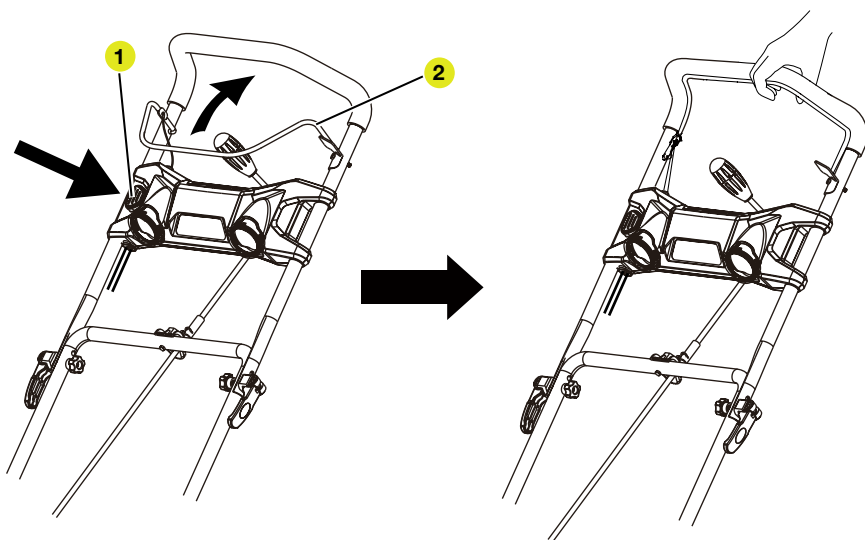
- Align the holes (3) on the upper chute control rod (4) with the holes on the lower chute control rod (5). Insert the hitch pin (6). Insert the end of the chute control rod (7) through the keyed hole (8) in the bracket that is attached to the top of the middle handle.
- Ensure that the handle (9) of the chute control rod points upward, and insert the rod into the keyed hole (10) in the back of the housing.
- Firmly push the rod into the keyed hole in the back of the housing until it snaps into place.
- Rotate the handle on the chute control rod to ensure that it moves in the same direction as the chute.





**POWERING ON AND OFF**

- To power on, first press the safety switch button (1).
- While pressing the safety switch button with one hand, use your other hand to simultaneously pull the ON/OFF switch bar lever (2) toward you. Once the machine powers on, release the safety switch button and proceed with operation. The snow thrower can only be started by pressing the safety switch button first, followed by squeezing the ON/OFF switch bar lever; doing these operations in reverse will not start the machine.
- To power off, release your grip on the ON/OFF switch bar lever.



**! CAUTION:** Do not attempt to override the operation of this safety switch.

**! WARNING:** Avoid accidental start-ups. Verify that the operator is in the starting position when using the snow thrower. In order to avoid serious injury, the operator and unit must be in a stable position when starting the snow thrower.

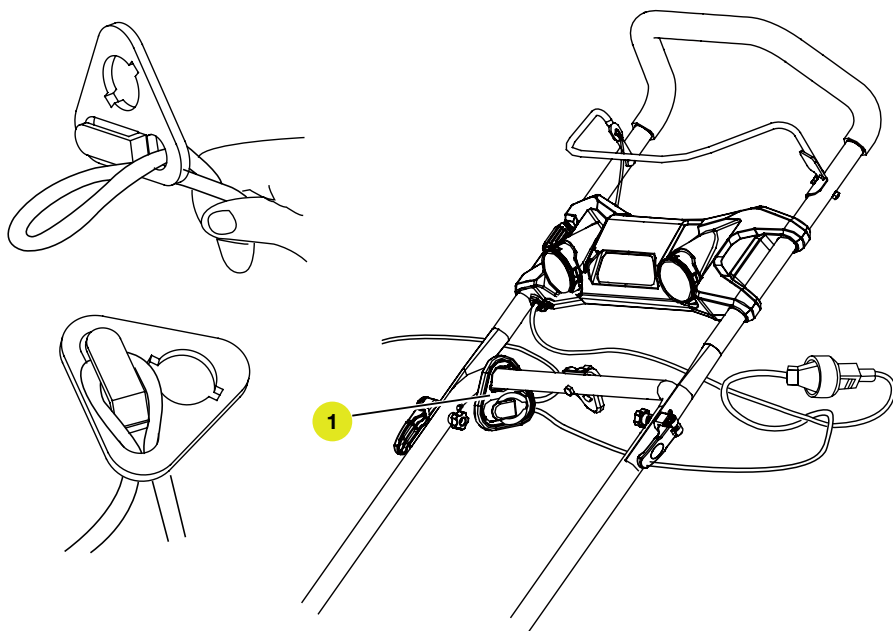
**USING THE CORD RETAINER**

This snow thrower is equipped with a cord retainer (1) in order to prevent the extension cord from disconnecting from the power cord while the snow thrower is in use. The cord retainer hangs from the cord guide bar.

**NOTE: Do not plug the extension cord into the outlet until it has been connected to the cord retainer and plugged into the snow thrower.**

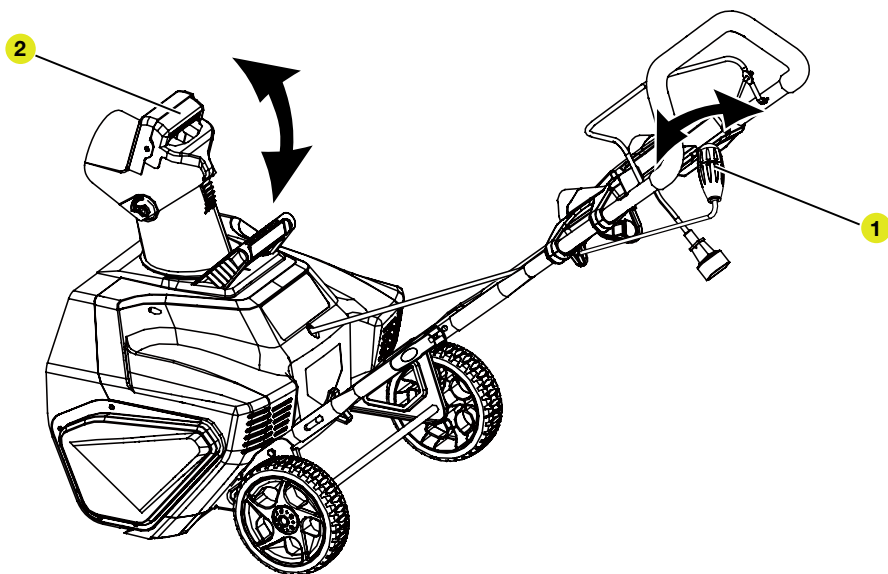
**To use the cord retainer:**

- Fold the extension cord to form a tight loop near the retainer.
- Push the loop through the bottom hole in the retainer.
- Slide the loop over the retaining clip, and pull until the cord is secured.



**ADJUSTING THE DISCHARGE CHUTE AND CHUTE DEFLECTOR**

- To adjust the discharge chute, rotate the handle (1) on the chute control rod in the direction that you wish to direct the snow stream.
- To adjust the chute deflector (and therefore the height of the snow stream), squeeze the trigger (2) and raise or lower the chute deflector.



**OPERATING TIPS**

- Keep children and pets away from the operating area.
- Keep the area to be cleared free of stones, toys, or other foreign objects that the impeller can throw. Such items may be covered by a snowfall and go unnoticed. If the snow thrower strikes an obstruction or a foreign object during operation, stop the snow thrower, unplug the extension cord, remove the obstruction, and inspect the snow thrower for damage.
- Do not force the chute deflector too far forward so that a gap appears between the discharge chute and the chute deflector.
- Begin removing snow near the electrical outlet, and work outward. Work back and forth, and not away from or towards the outlet.
- When turning at the end of a swath, step over the cord, and then turn the snow thrower.
- Overlap each swath, and discharge the snow in the same direction of the wind whenever possible.
- Shave down large banks of snow by placing the snow thrower on the bank. Allow the weight of the snow thrower to shave down the bank in a back-and-forth motion.
- Keep the extension cord clear of obstructions, sharp objects, and all moving parts. Do not pull sharply on the cord or abuse it in any manner. Inspect the extension cord on a regular basis for damage that may result in an electric shock. If the extension cord becomes damaged in any way, replace it immediately.
- Some controls and moving parts may freeze in certain cold and snowy weather conditions. If any of the controls become hard to operate, stop the motor, disconnect the extension cord, and inspect the snow thrower for frozen parts.
- Do not use excessive force when trying to operate frozen controls. Free all of the controls and moving parts before using the snow thrower.
- After clearing the snow, allow the motor to run for a few minutes so that the ice doesn't freeze any moving parts. Then shut off the motor, wait for all moving parts to come to a complete stop, and wipe the ice and snow off the snow thrower. Rotate the discharge chute several times in order to remove the snow from the discharge chute.
- Disconnect the extension cord when storing the snow thrower.

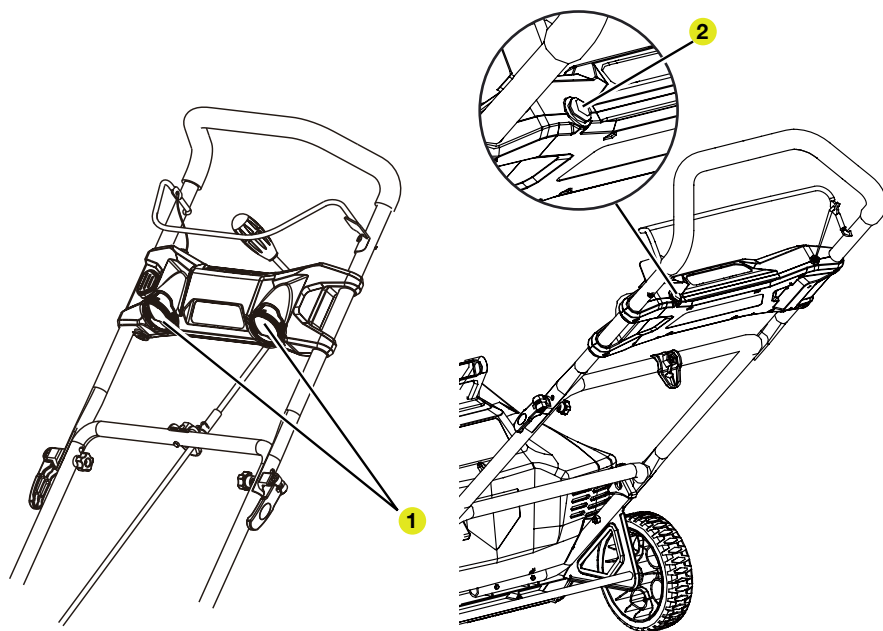


**WARNING: If the snow thrower hits a foreign object while it is in use, the object could be thrown in the direction of the operator or a bystander. Thrown objects could cause serious personal injury. Keep the area to be cleared free of all foreign objects that may be picked up and thrown by the impeller.**

### UTILIZING THE LED LIGHTS

- To utilize the LED lights (1) for night time snow removal, activate the LED light switch (2) .

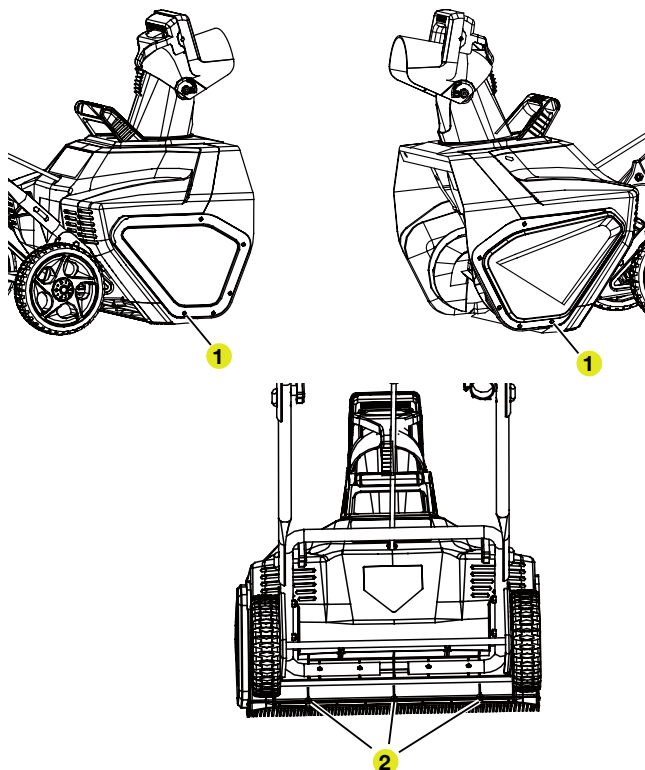
**NOTE: After you have finished using your snow thrower, remember to turn off the light switch.**



## REPLACING THE SCRAPER

The scraper is located at the bottom of the impeller housing.

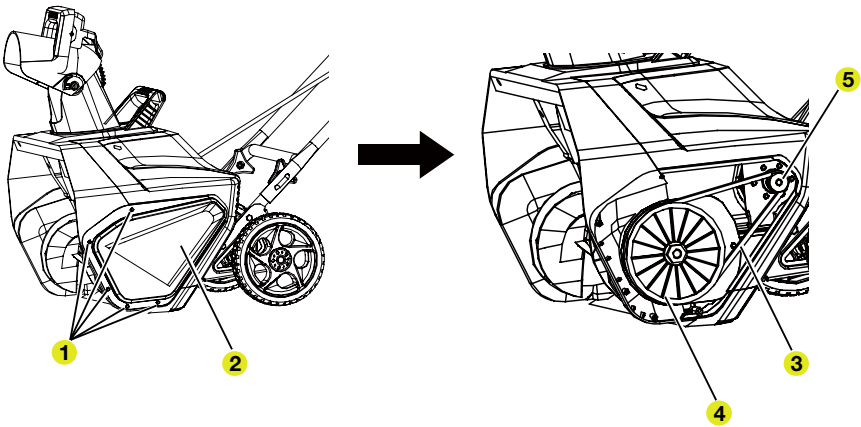
- Ensure that the snow thrower is not plugged in.
- Remove the screw (1) from each side plate that holds the scraper and 3 screws (2) from under the machine that secures the scraper to the machine.
- Remove and discard the old scraper.
- Install the new scraper, and fasten it securely with the 5 screws that you previously removed.



**! WARNING:** If the extension cord is plugged into the snow thrower, the snow thrower could start accidentally while the operator is performing maintenance on it, which could cause serious personal injury. Disconnect the extension cord before performing any maintenance.

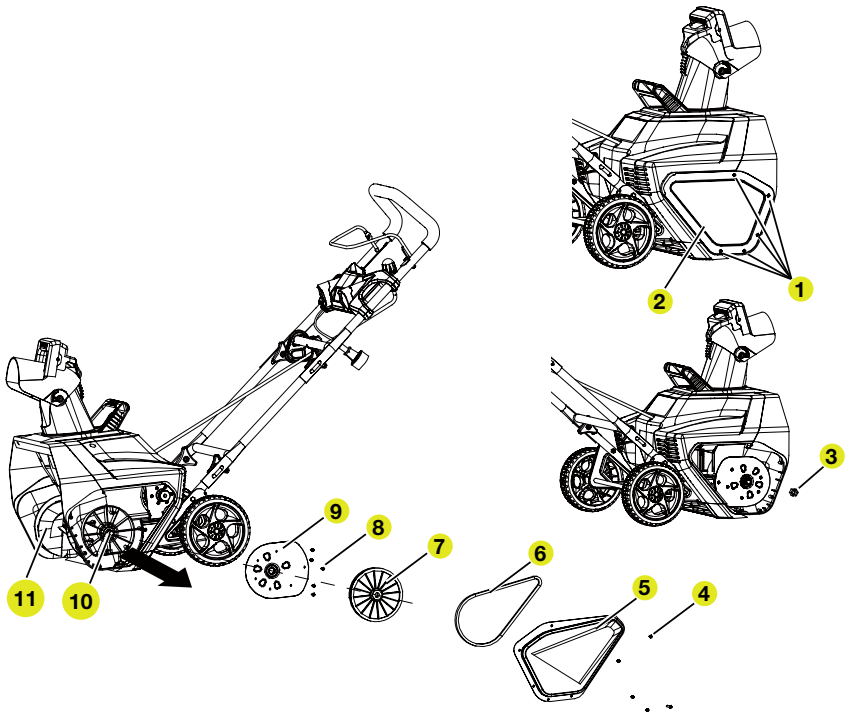
**REPLACING THE DRIVE BELT**

- Ensure that the snow thrower is not plugged in.
- Remove the 5 screws (1) that secure the left side plate (2) to the frame of the snow thrower. Remove the side cover.
- Remove the old belt (3) from the small pulley (5) and large pulley (4).
- Loop one end of the new belt over the small pulley.
- Rotate the impeller with the left hand while positioning the belt on the large pulley with the right hand.
- Install the left side cover, and secure it using the 5 screws that you previously removed.



**REPLACING THE IMPELLER**

- Remove the 5 screws (1) that secure the right side cover (2) to the frame of the snow thrower.
- Remove the nut (3).
- Remove the 5 screws (4) that secure the left side cover (5) to the frame of the snow thrower.
- Remove the belt (6).
- Using a socket wrench, remove the the large pulley (7).
- Remove the 5 screws (8) that secure the left side plate (9) and remove the left side plate.
- Pull the axle (10) and remove the old impeller (11).
- Install the new impeller.
- Reinstall the left side plate, large pulley, belt and left side cover.
- Reinstall the nut and right side cover.





model no. 060-3999-2 | contact us: 1.866.523.5218

## STORAGE

- Run the snow thrower for a few minutes in order to melt any snow that may be left on the snow thrower.
- Wipe the snow thrower off with a dry cloth before storage. This will help prevent ice building up on the unit and parts freezing.
- Disconnect the extension cord from the snow thrower.
- Inspect the extension cord thoroughly for signs of wear or damage. Replace it if it is worn or damaged.
- Inspect the snow thrower thoroughly for worn, loose, or damaged parts. If any parts must be repaired or replaced, contact the toll-free helpline at 1.866.523.5218.
- Store the extension cord with the snow thrower.
- Store the snow thrower in a clean, dry place. Cover it in order to provide added protection.

PROBLEM	POSSIBLE CAUSE	SOLUTION
The handle is not in position.	The bolts are not properly seated.	Make sure the bolts are correctly installed through the handle bars. Check to see if the hand knobs are tight. Refer to Assembling the Handle section in this manual.
	The switch is defective.	Have the switch replaced by an authorized service centre.
The snow thrower does not start.	The extension cord is not connected to the plug.	Connect the plug on the snow thrower to the extension cord.
	The extension cord is not connected to the power source.	Plug the extension cord into a live 120 V AC, 60 Hz outlet.
The motor is on, but the impeller does not turn.	The belt is damaged.	Replace the belt (see the section entitled Inspecting/ Replacing the Drive Belt).
The snow thrower leaves a thin layer of snow behind.	The scraper is worn.	Inspect the scraper for wear or damage. Replace the scraper (see the section Replacing the Scraper).



model no. 060-3999-2 | contact us: 1.866.523.5218

## 2-YEAR LIMITED WARRANTY

For TWO YEARS from the date of purchase within Canada, YARDWORKS CANADA will, at its option, repair or replace for the original purchaser, free or charge, any part or parts found to be defective in material or workmanship.

### THIS WARRANTY DOES NOT COVER:

1. Any part that has become inoperative due to misuse, commercial use, abuse, neglect, accident, improper maintenance, or alteration;
2. The unit, if it has not been operated and/or maintained in accordance with the owner's manual;
3. Normal wear, except as noted below;
4. Routine maintenance items such as lubricants, blade sharpening; or
5. Normal deterioration of the exterior finish due to use or exposure.

Full One Hundred Twenty Days Warranty on Normal Wear Parts: Normal wear parts are defined as blade adaptors, blades, grass bags and tires. These parts are warranted to the original purchaser to be free from defects in material and workmanship for a period of one hundred twenty (120) days from the date of retail purchase.

How to Obtain Service: Warranty service is available by calling the toll-free helpline at 1.866.523.5218. The factory will not accept the return of a complete unit unless prior written permission has been extended by YARDWORKS CANADA.

Transportation Charges: Transportation charges for the movement of any power equipment unit or attachment are the responsibility of the purchaser. The purchaser must pay transportation charges for any part submitted for replacement under this warranty unless such return is requested in writing by YARDWORKS CANADA.

Other Warranties: All other warranties, express or implied, including any implied warranty of merchantability is limited in its duration to that set forth in this express limited warranty. The provisions as set forth in this warranty provide the sole and exclusive remedy of YARDWORKS CANADA obligations arising from the sale of its products.

Imported by Yardworks Canada, Toronto, Canada M4S 2B8.  
Made in China

**YARDWORKS CANADA will not be liable for incidental or consequential loss or damage.**