



# YARDWORKS<sup>TM/MC</sup>

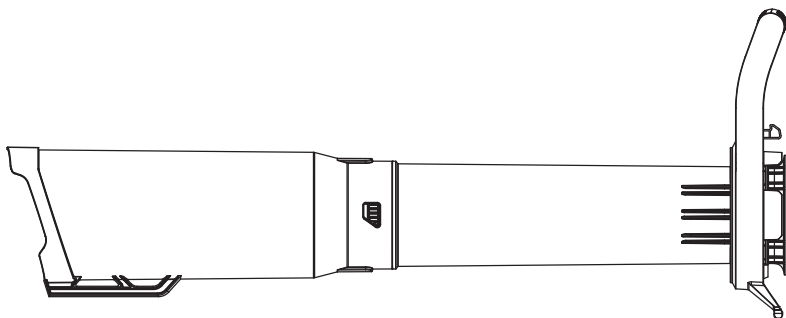
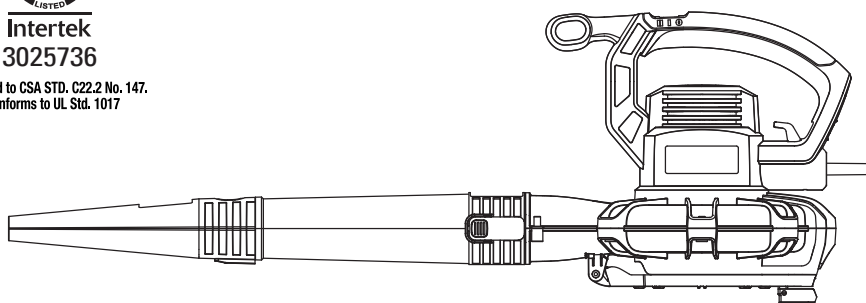
## HIGH-PERFORMANCE LEAF BLOWER & VACUUM

model number 060-3058-2 | contact us: 1.866.523.5218



Intertek  
3025736

Certified to CSA STD. C22.2 No. 147.  
Conforms to UL Std. 1017



### IMPORTANT:

Read and follow all safety rules and operating instructions before using this product.

Instruction  
Manual

|                          |    |
|--------------------------|----|
| Technical Specifications | 2  |
| General Safety Rules     | 3  |
| Know Your Blower         | 8  |
| Accessories              | 8  |
| Exploded View            | 9  |
| Parts List               | 10 |
| Assembly                 | 11 |
| Troubleshooting          | 15 |
| Storage                  | 16 |
| Maintenance              | 16 |
| Symbols                  | 17 |
| Warranty                 | 18 |

**TECHNICAL SPECIFICATIONS**

|                         |                                  |
|-------------------------|----------------------------------|
| Rated voltage           | 120 V~ 60 Hz                     |
| Rated power             | 12 A                             |
| No load speed           | 16000 /min                       |
| Airflow                 | 400 CFM                          |
| Air speed               | 160 or 250 MPH (257 or 402 km/h) |
| Mulching ratio          | 16:1                             |
| Collection bag capacity | 1.2 bushels (42.2 L)             |
| Weight                  | 10 lb (4.5 kg)                   |
| Protection class        | II                               |

**WARNING:** Some dust created by power sanding, sawing, grinding, drilling and other construction activities contains chemicals known to cause cancer, birth defects or other reproductive harm. Some examples of these chemicals are:

- Lead from lead-based paints;
- Crystalline silica from bricks and cement and other masonry products; and
- Arsenic and chromium from chemically-treated lumber.

Your risk from these exposures varies, depending on how often you do this type of work. To reduce your exposure to these chemicals: work in a well-ventilated area, and work with approved safety equipment, such as those dust masks that are specially designed to filter out microscopic particles.

#### FOR ALL APPLIANCES

- Avoid Dangerous Environments — Don't use appliances in damp or wet locations.
- Don't Use In Rain.
- Keep Children Away — All visitors should be kept at a distance from work area.
- Dress Properly — Do not wear loose clothing or jewellery. They can be caught in moving parts. Use of rubber gloves and substantial footwear is recommended when working outdoors. Wear protective hair covering to contain long hair.
- Use Safety Glasses — Always use face or dust mask if operation is dusty.
- Use Right Appliance — Do not use appliance for any job except that for which it is intended.
- Ground Fault Circuit Interrupter (GFCI) protection should be provided on the circuit(s) or outlet(s) to be used for the gardening appliance. Receptacles are available having built-in GFCI protection and may be used for this measure of safety.
- Warning — To reduce the risk of electric shock, use only with an extension cord



**WARNING:** When using electric gardening appliances, basic safety precautions should always be followed to reduce the risk of fire, electric shock, and personal injury, including the following:



**WARNING:** Read all instructions.



**WARNING:** This product can expose you to chemicals including lead, phthalate or bisphenol A which are known to cause cancer, birth defects or other reproductive harm. Wash your hands after use.

- intended for outdoor use, such as an extension cord of cord type SW-A, SOW-A, STW-A, STOW-A, SJW-A, SJOW-A, SJTW-A. or SJTOW-A.
- Extension Cord — Make sure your extension cord is in good condition. When using an extension cord, be sure to use one heavy enough to carry the current your product will draw. An undersized extension cord will cause a drop in line voltage resulting in loss of power and overheating. Table 1 shows the correct size to use depending on cord length and nameplate ampere rating. If in doubt, use the next heavier gauge. The smaller the gauge number, the heavier the cord. To reduce the risk of disconnection of appliance cord from the extension cord during operating:
    - i) Make a knot as shown in Figure 1.
    - ii) Use one of the plug-receptacle retaining straps or connectors described in this manual.
  - Avoid Unintentional Starting — Don't carry plugged-in appliance with finger on switch. Be sure switch is off when plugging in.
  - Don't Abuse Cord — Never carry appliance by cord or yank it to disconnect from receptacle. Keep cord from heat, oil, and sharp edges.
  - Don't Force Appliance — It will do the job better and with less likelihood of a risk of injury at the rate for which it was designed.
  - Don't Overreach — Keep proper footing and balance at all times.
  - Stay Alert — Watch what you are doing. Use common sense. Do not operate appliance when you are tired.
  - Disconnect Appliance — Disconnect the appliance from the power supply when not in use, before servicing, when changing accessories such as blades, and the like.
  - Store Idle Appliances Indoors — When not in use, appliances should be stored indoors in dry, and in a high or locked-up place — out of reach of children.
  - Maintain Appliance With Care — Keep cutting edge sharp and clean for best performance and to reduce the risk of injury. Follow instructions for lubricating and changing accessories. Inspect appliance cord periodically, and if damaged, have it repaired by an authorized service facility. Inspect extension cords periodically and replace if damaged. Keep handles dry, clean, and free from oil and grease.
  - Check Damaged Parts — Before further use of the appliance, a guard or other part that is damaged should be carefully checked to determine that it will operate properly and perform its intended function. Check for alignment of moving parts, binding of moving parts, breakage of parts, mounting, and any other condition that may affect its operation. A guard or other part that is damaged should be properly repaired or replaced by an authorized service centre unless indicated elsewhere in this manual.



**WARNING:** Read all safety warnings and instructions. Failure to follow the warnings and instructions may result in electric shock, fire and/or serious injury.

Table 1

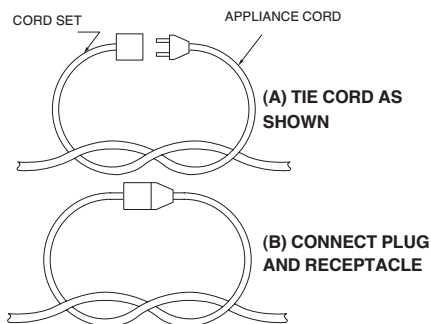
## Minimum gauge for extension cords

| Volts   | Total length of cord |                    |                      |                     |
|---|----------------------|--------------------|----------------------|---------------------|
|   | 25'<br>(7.6<br>m)    | 50'<br>(15.2<br>m) | 100'<br>(30.5<br>m)  | 150'<br>(45.7<br>m) |
| 120 V   |                      |                    |                      |                     |
| Ampere<br>rating<br>more than<br>not more<br>than | AWG                  |                    |                      |                     |
| 0-6   | 18                   | 16                 | 16                   | 14                  |
| 6-10  | 18                   | 16                 | 14                   | 12                  |
| 10-12   | 16                   | 16                 | 14                   | 12                  |
| 12-16   | 14                   | 12                 | Not recom-<br>mended |                     |

## FOR ALL DOUBLE-INSULATED APPLIANCES

- Replacement Parts: When servicing use only identical replacement parts.
- Polarized Appliance Connections: To reduce the risk of electric shock, this appliance has a polarized plug (one blade is wider than the other) and will require the use of a polarized extension cord. The appliance plug will fit into a polarized extension cord only one way. If the plug does not fit fully into the extension cord, reverse the plug. If the plug still does not fit, obtain a correct polarized extension cord. A polarized extension cord will require the use of a polarized wall outlet. This plug will fit into the polarized wall outlet only one way. If the plug does not fit fully into the wall outlet, reverse the plug. If the plug still does not fit, contact a qualified electrician to install the proper wall outlet. Do not change the equipment plug, extension cord receptacle, or extension cord plug in any way.

**Figure 1**  
Method of securing extension cord



## ADDITIONAL SAFETY WARNINGS

## IMPORTANT SAFETY INSTRUCTIONS

- When using an electrical appliance, basic precautions should always be followed, including the following:

**READ ALL INSTRUCTIONS BEFORE USING THIS APPLIANCE****WARNING – TO REDUCE THE RISK OF FIRE, ELECTRIC SHOCK, OR INJURY:**

- Do not leave appliance when plugged in. Unplug from outlet when not in use and before servicing.
- To reduce the risk of electric shock – Do not use on wet surfaces. Do not expose to rain. Store indoors.
- Do not allow to be used as a toy. Close attention is necessary when used by or near children.
- Use only as described in this manual. Use only manufacturer's recommended attachments.
- Do not use with damaged cord or plug. If appliance is not working as it should, has been dropped, damaged, left outdoors, or dropped into water, return it to a service centre.
- Do not pull or carry by cord, use cord as a handle, close a door on cord, or pull cord around sharp edges or corners. Do not run appliance over cord. Keep cord away from heated surfaces.
- Do not handle plug or appliance with wet hands.
- Do not put any object into openings. Do not use with any opening blocked; keep free of dust, lint, hair, and anything that may reduce airflow.
- Keep hair, loose clothing, fingers, and all parts of body away from openings and moving parts.
- Turn off all controls before unplugging.
- Use extra care when cleaning on stairs.
- Do not use to pick up flammable or combustible liquids, such as gasoline, or use in areas where they may be present.
- Do not pick up anything that is burning or smoking, such as cigarettes, matches, or hot ashes.
- Do not use without dust bag and/or filters in place.
- Do not unplug by pulling on cord. To unplug, grasp the plug, not the cord.
- This appliance is provided with double insulation. Use only identical replacement parts. See instructions for Servicing of Double-Insulated Appliances.

**SAVE THESE INSTRUCTIONS****SERVICING OF DOUBLE-INSULATED APPLIANCES**

A double-insulated appliance is marked with one or more of the following: The words “DOUBLE INSULATION” or “DOUBLE INSULATED” or the double insulation symbol (square within a square).



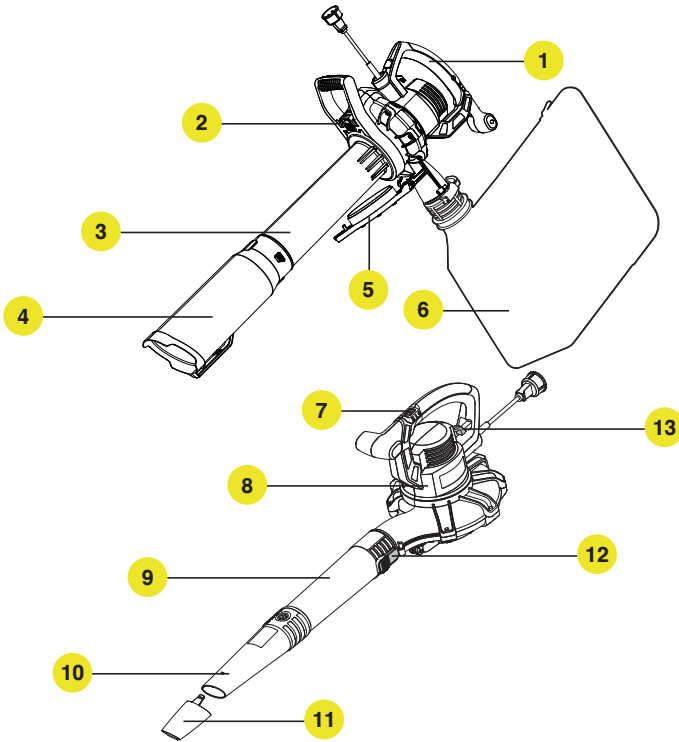
In a double-insulated appliance, two systems of insulation are provided instead of grounding.

No grounding means is provided on a double-insulated appliance, nor should a means for grounding be added to the appliance. Servicing a double-insulated appliance requires extreme care and knowledge of the system, and should be done only by qualified service personnel.

Replacement parts for a double-insulated appliance must be identical to the parts they replace.

model number 060-3058-2 | contact us: 1.866.523.5218

- |                                 |                                |
|---------------------------------|--------------------------------|
| 1. Handle                       | 8. Motor Housing               |
| 2. Vac Tube Release Button      | 9. Upper Blower Tube           |
| 3. Upper Vacuum Tube            | 10. Lower Blower Tube          |
| 4. Lower Vacuum Tube            | 11. Concentrator Nozzle        |
| 5. Fan Cover                    | 12. Blower Tube Release Button |
| 6. Leaf Collection Bag          | 13. Extension Cord Retainer    |
| 7. On/Off Switch/2-Speed Switch |                                |



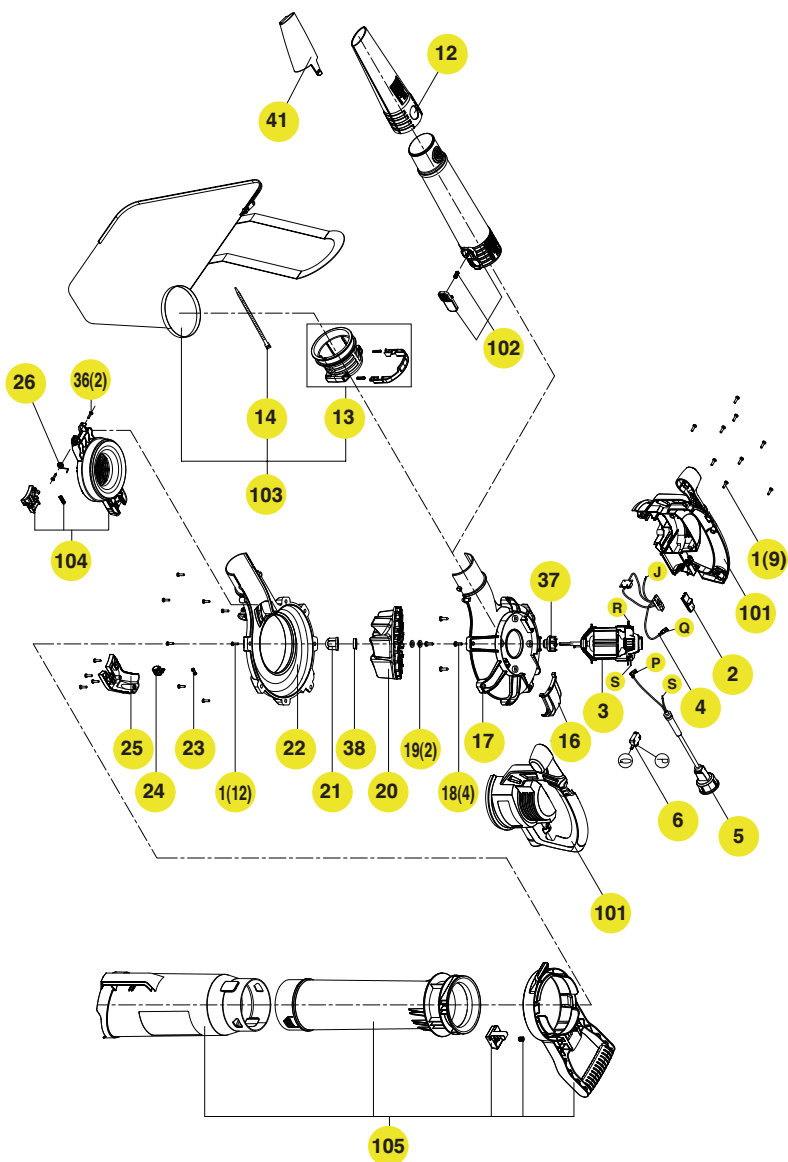
- |                     |   |
|---------------------|---|
| Leaf Collection Bag | 1 |
| Concentrator Nozzle | 1 |

We recommend that you purchase your accessories listed in the above list from the same store that sold you the tool. Refer to the accessory packaging for further details. Store personnel can assist you and offer advice.



model number 060-3058-2 | contact us: 1.866.523.5218

Exploded View



model number 060-3058-2 | contact us: 1.866.523.5218

| Item | Description        | QTY. |
|------|--------------------|------|
| 1    | Self-tapping Screw | 21   |
| 2    | Push Button        | 1    |
| 3    | Motor              | 1    |
| 4    | Speed Control      | 1    |
| 5    | Power Cord         | 1    |
| 6    | Switch             | 1    |
| 12   | Blower Tube II     | 1    |
| 13   | Dust Port          | 1    |
| 14   | Bind Tape          | 1    |
| 16   | Up Cover           | 1    |
| 17   | Up Volute          | 1    |
| 18   | Self-tapping Screw | 4    |
| 19   | Washer             | 2    |
| 20   | Fan                | 1    |
| 21   | Nut                | 1    |
| 22   | Down Volute        | 1    |
| 23   | Compression Spring | 1    |
| 24   | Sliding Block      | 1    |
| 25   | Down Cover         | 1    |
| 26   | Compression Spring | 1    |
| 36   | Self-tapping Screw | 2    |
| 37   | Shaft Cover        | 1    |
| 38   | Washer             | 1    |
| 41   | Blower Tube III    | 1    |
| 101  | Left/Right Housing | 1    |
| 102  | Blower Tube I      | 1    |
| 103  | Dust Collector     | 1    |
| 104  | Safety Guard       | 1    |
| 105  | Vacuum Tube        | 1    |

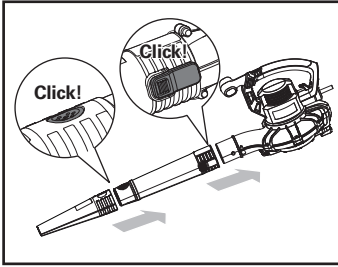
## OPERATION

### INTENDED USE

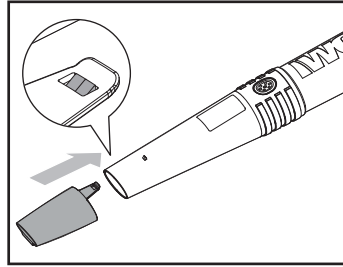
The blower/vacuum is intended for residential use only. Use the blower outdoors to move or vacuum yard debris as needed.

### ASSEMBLY AND OPERATION

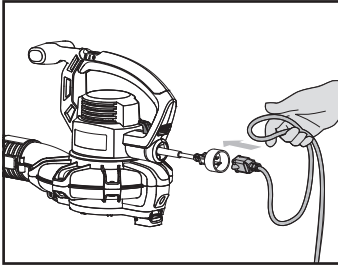
| ACTION   | FIGURE                  |
|--|-------------------------|
| <b>BLOW MODE</b>   |                         |
| Assembling the Blower Tube                                   | See Fig. A1             |
| Assembling the Concentrator Nozzle (optional)                | See Fig. A2             |
| Attaching the Extension Cord                                 | See Figs. B1 and B2     |
| Starting and Stopping  | See Fig. C              |
| Using the Blower   | See Fig. D              |
| Adjusting the Blowing Speed                                  | See Fig. E              |
| <b>VACUUM MODE</b>   |                         |
| Disassembling the Blower                                     | See Fig. F              |
| Assembling the Vacuum Tube                                   | See Figs. G1, G2 and G3 |
| Attaching the Leaf Collection Bag                            | See Fig. H              |
| Attaching the Extension Cord                                 | See Figs. B1 and B2     |
| Starting and Stopping  | See Fig. C              |
| Using the Vacuum   | See Fig. I              |
| Emptying the Leaf Collection Bag                             | See Figs. J1 and J2     |
| Removing Clogged Debris from the Impeller (no tool included) | See Figs. K1 and K2     |



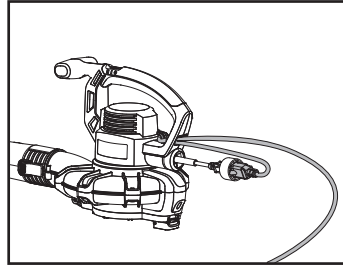
A1



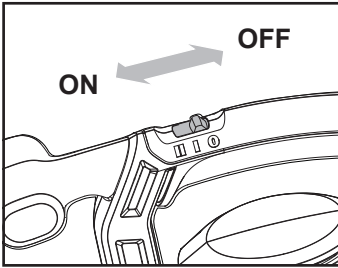
A2



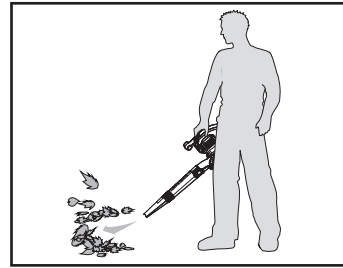
B1



B2

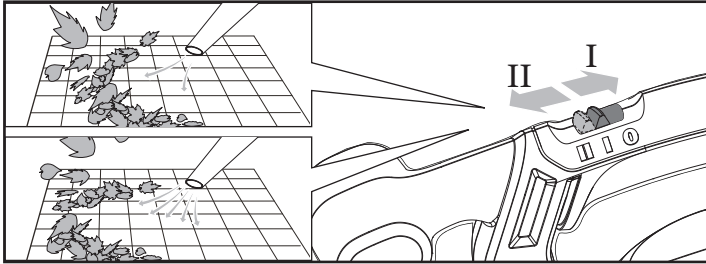


C

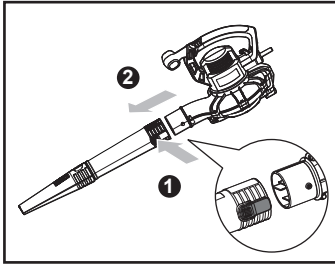


D

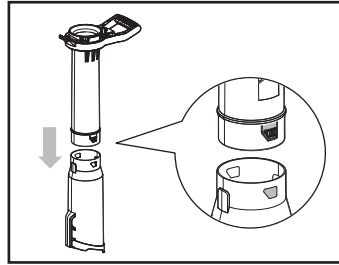
model number 060-3058-2 | contact us: 1.866.523.5218



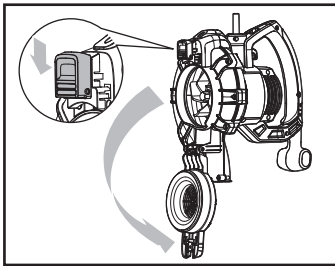
E



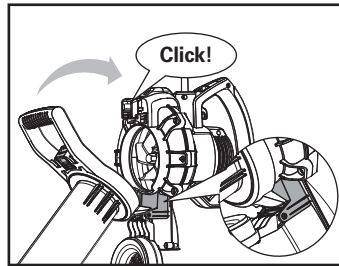
F



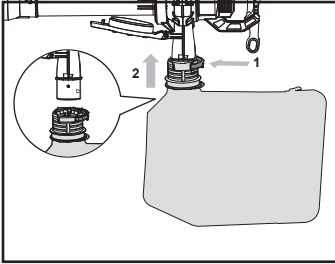
G1



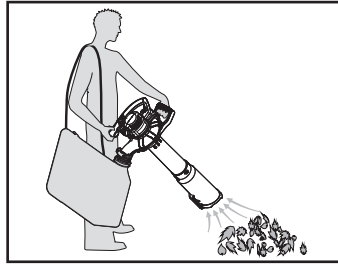
G2



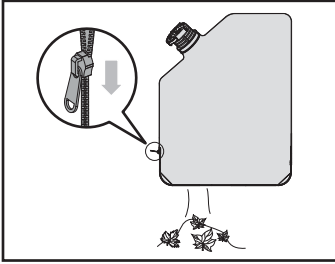
G3



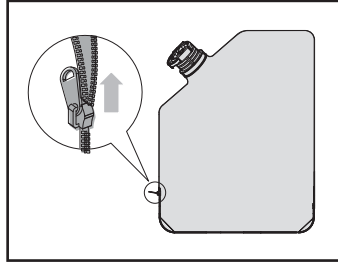
H



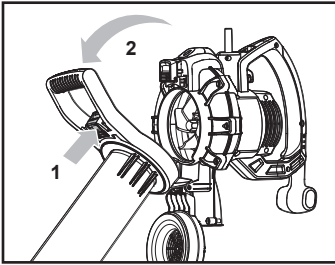
I



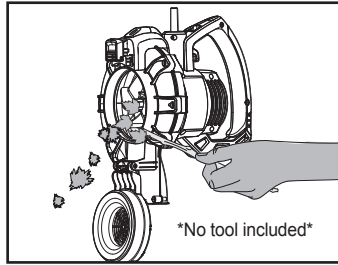
J1



J2



K1



K2

**TROUBLESHOOTING**

| Problems                          | Possible Causes   | Corrective Action  |
|-----------------------------------|---|--|
| The blower/vac does not operate.  | The vacuum tube or the fan cover is not attached to the motor housing.        | Attach the vacuum tube or the fan cover to the motor housing.                            |
|                                   | Power cord is not connected to the power source.                              | Connect the power cord to a power source.  |
| The blower/vac jammed or clogged. | Debris blocking in the impeller.  | Remove clogged debris from the impeller.   |
|                                   | Debris blocking the vacuum tube or the connection of the leaf collection bag. | Remove clogged debris from the vacuum tube or the connection of the leaf collection bag. |









**Store the blower/vacuum and extension cord indoors, in a cool, dry location, out of reach of children and animals.**

**Remove the plug before carrying out any adjustment, servicing or maintenance.**

Never use water or chemical cleaners to clean your power tool. Wipe clean with a dry cloth. Keep the motor ventilation slots clean. Keep all working controls free of dust. If the replacement of the supply cord is necessary, this has to be done by the manufacturer or his agent in order to avoid a safety hazard.



model number 060-3058-2 | contact us: 1.866.523.5218

| Symbol   | Name                       | Designation/Explanation  |
|--|----------------------------|--|
| V  | Volts                      | Voltage  |
| A  | Amperes                    | Current  |
| Hz   | Hertz                      | Frequency (cycles per second)                                    |
| W  | Watts                      | Power  |
| min  | Minutes                    | Time   |
|    | Alternating Current        | Type of current  |
|    | Direct Current             | Type of current  |
|    | Class II Construction      | Double-insulated construction                                    |
| /min   | Per Minute                 | Revolutions, strokes, surface speed, orbits etc., per minute.    |
|    | Read The Operator's Manual | To reduce the risk of injury, user must read instruction manual. |
|    | Ear Protection             | Wear ear protection.   |
|    | Operation condition        | Do not expose to rain.   |
|   | Li-ion Battery             | Lithium-ion. Separate collection: battery must be recycled.      |

**SAVE THESE INSTRUCTIONS!**

## TWO-YEAR LIMITED WARRANTY

For Two (2) Years from the date of purchase within Canada, YARDWORKS CANADA will, at its option, repair or replace for the original purchaser, free of charge, any part or parts found to be defective in material or workmanship.

### THIS WARRANTY DOES NOT COVER

1. Any part that has become inoperative due to misuse, commercial use, abuse, neglect, accident, improper maintenance, or alteration;
2. The unit, if it has not been operated and/or maintained in accordance with the owner's manual;
3. Normal wear, except as noted below;
4. Routine maintenance items such as lubricants, blade sharpening; or
5. Normal deterioration of the exterior finish due to use or exposure.

### FULL ONE HUNDRED TWENTY (120) DAYS WARRANTY ON NORMAL WEAR PARTS

Normal wear parts are defined as blade adaptors, blades, grass bags and tires. These parts are warranted to the original purchaser to be free from defects in material and workmanship for a period of one hundred twenty (120) days from the date of retail purchase.

## HOW TO OBTAIN SERVICE

Warranty service is available by calling the toll-free helpline, at 1.866.523.5218. The factory will not accept the return of a complete unit unless prior written permission has been extended by YARDWORKS CANADA.

## TRANSPORTATION CHARGES

Transportation charges for the movement of any power equipment unit or attachment are the responsibility of the purchaser. The purchaser must pay transportation charges for any part submitted for replacement under this warranty unless such return is requested in writing by YARDWORKS CANADA.

## OTHER WARRANTIES

All other warranties, express or implied, including any implied warranty of merchantability is limited in its duration to that set forth in this express limited warranty. The provisions as set forth in this warranty provide the sole and exclusive remedy of YARDWORKS CANADA obligations arising from the sale of its products.



