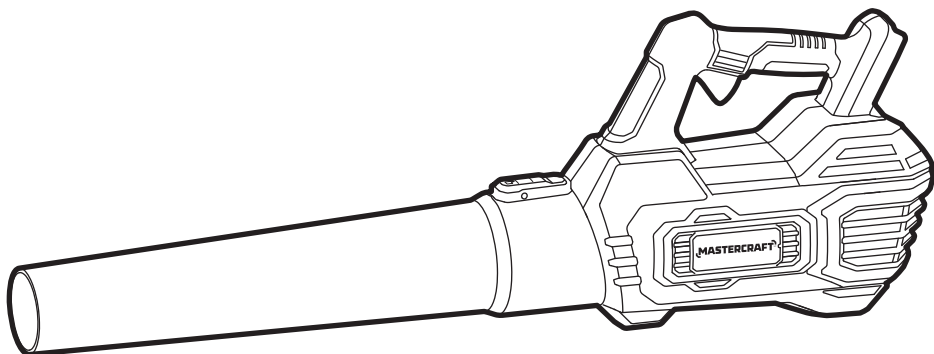


model no. SC20BBL



## LEAF BLOWER



### **IMPORTANT:**

Read and understand this instruction manual thoroughly before using the product.

## **INSTRUCTION MANUAL**



## TABLE OF CONTENTS

Technical Specifications	4
Safety Guidelines	5
Key Parts Diagram	10
Operating Instructions	11
Maintenance	13
Troubleshooting	14
Parts List	15
Warranty	17

### NOTE:

If any parts are missing or damaged, or if you have any questions, please call our toll-free helpline at 1-800-689-9928.



### SAVE THESE INSTRUCTIONS

- This manual contains important safety and operating instructions. Read all instructions and follow them when using this product.

**TECHNICAL SPECIFICATIONS**

Rated Voltage	20 V d.c.
Maximum Air Volume	370 CFM
Maximum Air Speed	90 MPH (144 KPH)

\*Maximum battery voltage without workload; with workload nominal voltage is 18 V.

**NOTICE:** The blower is intended for household or commercial use.

### SAFETY GUIDELINES:



#### WARNING!

Safety symbols in this Instruction Manual are used to flag possible dangers. The safety symbols and their explanations require your full understanding. The safety warnings do not, by themselves, eliminate any danger, nor are they substitutes for proper accident prevention measures.



#### WARNING!

This Safety Alert Symbol indicates caution, warning, or danger. Failure to obey a safety warning can result in serious injury to yourself or others. To reduce the risk of injury, fire, or electric shock, always follow the safety precautions.

### KNOW YOUR TOOL

To operate this tool, carefully read this Instruction Manual and all labels affixed to the cordless blower before using. Keep this instruction manual available for future reference.

### IMPORTANT

This tool should only be serviced by a qualified service technician. For more information, call the toll-free helpline at 1-800-689-9928.

### GENERAL POWER TOOL SAFETY WARNINGS



#### WARNING!

**Read all safety warnings, instructions, illustrations and specifications provided with this power tool.** Failure to follow all instructions listed below may result in electric shock, fire and/or serious injury.

### SAVE ALL WARNINGS AND INSTRUCTIONS FOR FUTURE REFERENCE.

The term “power tool” in the warnings refers to your mains-operated (corded) power tool or battery-operated (cordless) power tool.

### WORK AREA SAFETY

- **Keep work area clean and well lit.** Cluttered or dark areas invite accidents.
- **Do not operate power tools in explosive atmospheres, such as in the presence of flammable liquids, gases or dust.** Power tools create sparks which may ignite the dust or fumes.
- **Keep children and bystanders away while operating a power tool.** Distractions can cause you to lose control.

## ELECTRICAL SAFETY

- **Power tool plugs must match the outlet. Never modify the plug in any way. Do not use any adaptor plugs with earthed (grounded) power tools.** Unmodified plugs and matching outlets will reduce risk of electric shock.
- **Avoid body contact with earthed or grounded surfaces, such as pipes, radiators, ranges and refrigerators.** There is an increased risk of electric shock if your body is earthed or grounded.
- **Do not expose power tools to rain or wet conditions.** Water entering a power tool will increase the risk of electric shock.
- **Do not abuse the cord. Never use the cord for carrying, pulling or unplugging the power tool. Keep cord away from heat, oil, sharp edges or moving parts.** Damaged or entangled cords increase the risk of electric shock.
- **When operating a power tool outdoors, use an extension cord suitable for outdoor use.** Use of a cord suitable for outdoor use reduces the risk of electric shock.
- **If operating a power tool in a damp location is unavoidable, use a ground fault circuit interrupter (GFCI) protected supply.** Use of an GFCI reduces the risk of electric shock.

## PERSONAL SAFETY

- **Stay alert, watch what you are doing and use common sense when operating a power tool. Do not use a power tool while you are tired or under the influence of drugs, alcohol or medication.** A moment of inattention while operating power tools may result in serious personal injury.
- **Use personal protective equipment. Always wear eye protection.** Protective equipment such as a dust mask, non-skid safety shoes, hard hat or hearing protection used for appropriate conditions will reduce personal injuries.
- **Prevent unintentional starting. Ensure the switch is in the off-position before connecting to power source and/or battery pack, picking up or carrying the tool.** Carrying power tools with your finger on the switch or energising power tools that have the switch on invites accidents.
- **Remove any adjusting key or wrench before turning the power tool on.** A wrench or a key left attached to a rotating part of the power tool may result in personal injury.
- **Do not overreach. Keep proper footing and balance at all times.** This enables better control of the power tool in unexpected situations.
- **Dress properly. Do not wear loose clothing or jewellery. Keep your hair and clothing away from moving parts.** Loose clothes, jewellery or long hair can be caught in moving parts.
- **If devices are provided for the connection of dust extraction and collection facilities, ensure these are connected and properly used.** Use of dust collection can reduce dust-related hazards.
- **Do not let familiarity gained from frequent use of tools allow you to become complacent and ignore tool safety principles.** A careless action can cause severe injury within a fraction of a second.

### POWER TOOL USE AND CARE

- **Do not force the power tool. Use the correct power tool for your application.** The correct power tool will do the job better and safer at the rate for which it was designed.
- **Do not use the power tool if the switch does not turn it on and off.** Any power tool that cannot be controlled with the switch is dangerous and must be repaired.
- **Disconnect the plug from the power source and/or remove the battery pack, if detachable, from the power tool before making any adjustments, changing accessories, or storing power tools.** Such preventive safety measures reduce the risk of starting the power tool accidentally.
- **Store idle power tools out of the reach of children and do not allow persons unfamiliar with the power tool or these instructions to operate the power tool.** Power tools are dangerous in the hands of untrained users.
- **Maintain power tools and accessories. Check for misalignment or binding of moving parts, breakage of parts and any other condition that may affect the power tool's operation. If damaged, have the power tool repaired before use.** Many accidents are caused by poorly maintained power tools.
- **Keep cutting tools sharp and clean.** Properly maintained cutting tools with sharp cutting edges are less likely to bind and are easier to control.
- **Use the power tool, accessories and tool bits etc. in accordance with these instructions, taking into account the working conditions and the work to be performed.** Use of the power tool for operations different from those intended could result in a hazardous situation.
- **Keep handles and grasping surfaces dry, clean and free from oil and grease.** Slippery handles and grasping surfaces do not allow for safe handling and control of the tool in unexpected situations.

### BATTERY TOOL USE AND CARE

- **Recharge only with the charger specified by the manufacturer.** A charger that is suitable for one type of battery pack may create a risk of fire when used with another battery pack.
- **Use power tools only with specifically designated battery packs.** Use of any other battery packs may create a risk of injury and fire.
- **When battery pack is not in use, keep it away from other metal objects, like paper clips, coins, keys, nails, screws or other small metal objects, that can make a connection from one terminal to another.** Shorting the battery terminals together may cause burns or a fire.
- **Under abusive conditions, liquid may be ejected from the battery; avoid contact. If contact accidentally occurs, flush with water. If liquid contacts eyes, additionally seek medical help.** Liquid ejected from the battery may cause irritation or burns.
- **Do not use a battery pack or tool that is damaged or modified.** Damaged or modified batteries may exhibit unpredictable behaviour resulting in fire, explosion or risk of injury.

- **Do not expose a battery pack or tool to fire or excessive temperature.** Exposure to fire or temperature above 130°C (265°F) may cause explosion.
- **Follow all charging instructions and do not charge the battery pack or tool outside the temperature range specified in the instructions.** Charging improperly or at temperatures outside the specified range may damage the battery and increase the risk of fire.
- **Do not modify or attempt to repair the appliance or the battery pack (as applicable) except as indicated in the instructions for use and care.**

## SERVICE

- **Have your power tool serviced by a qualified repair person using only identical replacement parts.** This will ensure that the safety of the power tool is maintained.
- **Never service damaged battery packs.** Service of battery packs should only be performed by the manufacturer or authorized service providers.

## IMPORTANT SAFETY INSTRUCTIONS

When using an electrical appliance, basic precautions should always be followed, including the following:

### READ ALL INSTRUCTIONS BEFORE USING THIS APPLIANCE

- **Know your power blower. Read the instruction manual carefully. Learn the blower's applications and limitations, as well as the specific potential hazards related to this blower.** Following this rule will reduce the risk of electric shock, fire, or serious injury.
- **Do not allow the blower to be used as a toy.** Close attention is necessary when used by or near children.
- **Use only as described in this manual. Use only manufacturer's recommended attachments.**
- **If the blower is not working as it should, has been dropped, damaged, left outdoors, or dropped into water, return it to a service centre.**
- **Do not handle the charger, including charger plug, or charger terminals, with wet hands.**
- **Do not put any object into any openings. Do not use with any opening blocked; keep openings free of dust, lint, hair, and anything that may reduce airflow.**
- **Keep hair, loose clothing, fingers, and all parts of body away from openings and moving parts.** Loose clothes, jewellery, or long hair can be drawn into air vents.
- **Secure long hair above shoulder level to prevent entanglement in moving parts.**
- **Use extra care when cleaning on stairs.**
- **Wear additional personal protective equipment such as safety goggles and respirator (or breathing protection).** Wearing suitable protective equipment for the conditions reduces any exposure to hazardous substances.

## SAVE THESE INSTRUCTIONS!



### **IMPORTANT SAFETY INSTRUCTIONS**

- **The label on your tool may include the following symbols. The symbols and their definitions are as follows:**

V ..... Volts

A ..... Amperes

W ..... Watts

min ..... Minutes

— or d.c. .... Direct current

$n_0$  ..... No-load speed



..... Class II construction

CFM ..... Cubic feet per minute

MPH ..... Miles per hour



..... WARNING—To reduce the risk of injury, user must read instruction manual.



..... WARNING—To reduce the risk of injury, always wear eye protection.



..... WARNING—To reduce the risk of injury, always wear ear protection.



..... The logo of UL certification

LISTED  
GARDENING APPLIANCE  
E490727



### **WARNING!**

To reduce the risk of electric shock or damage to the charger and battery, use only the Mastercraft® batteries and chargers listed.

#### **BATTERY PACKS**

054-3124-0, 054-7553-4, 054-7557-6

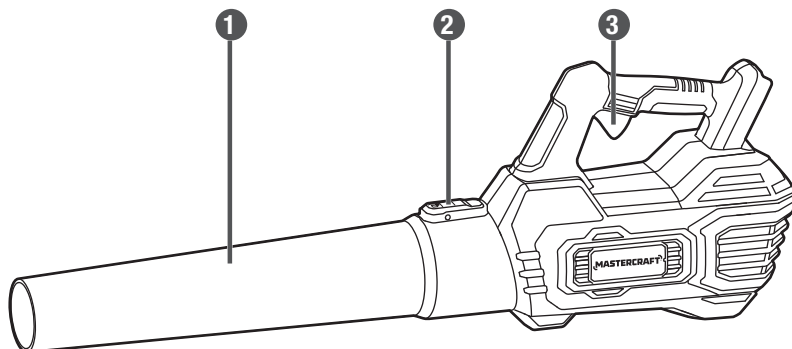
#### **CHARGERS**

054-3126-6, 054-7559-2

- **For best results, your battery and tool should be stored, charged, and used in a location where the temperature is more than 5°C (41°F) but less than 40°C (104°F). Store indoors.**

**PACKAGE CONTENTS:**

Cordless blower, blower tube.

**KEY PARTS DIAGRAM**

No.	Description
1	Blower tube
2	Tube-release button

No.	Description
3	Variable-speed trigger switch

Before attempting to use this tool, become familiar with all of its operating features and safety requirements. For optimum performance and safety, read the following operating instructions carefully before using.

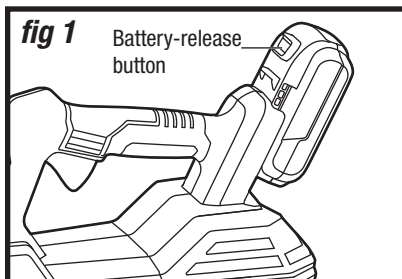
**WARNING!**

- Remove the blower from the package and examine it carefully. Do not discard the carton or any packaging material until all parts have been examined.
- If any part of the blower is missing or damaged, do not attach the battery pack to the tool or use the tool until the part has been repaired or replaced. Failure to heed this warning could result in serious injury.
- Do not allow familiarity with the blower to cause a lack of alertness. A fraction of a second of carelessness is enough to cause severe injury.

## OPERATING INSTRUCTIONS

### TO ATTACH BATTERY PACK (fig 1)

1. Make sure that the switch is in the OFF position.
2. Align the raised portion on the battery pack with the grooves on the bottom of the tool, and then slide the battery pack onto the tool as shown.
3. Ensure that the battery-release button on the battery pack snaps into place and the battery pack is secured to the tool before beginning operation.



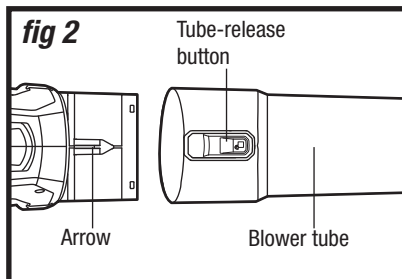
### TO DETACH THE BATTERY PACK (fig 1)

1. Ensure that the switch is in the OFF position.
2. Depress the battery-release button located on the front of the battery pack to release the battery pack.
3. Pull rearward on the battery pack to remove it from the tool.

### ASSEMBLING THE BLOWER TUBE (fig 2)

This product requires assembly before using. To prevent accidental starting that could cause serious personal injury, always remove the battery pack from the tool when assembling parts.

1. Align the tube-release button on the blower tube with the arrow on the top of blower housing, and then insert the tube into the blower housing.
2. To remove the blower tube, press the tube-release button and then pull the tube straight out from the blower.



**NOTICE:** When placing a battery pack on the tool, be sure that the raised rib on the battery pack aligns with the groove on the cordless blower and the latches snap into place properly. Improper assembly of the battery pack can cause damage to internal components.

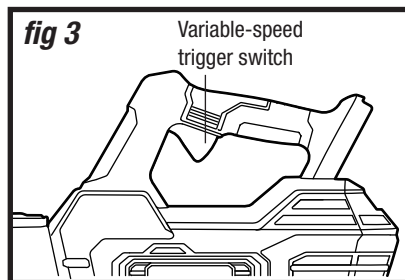


### WARNING!

- To avoid the possibility of accidental starting, always take care not to activate the variable-speed trigger switch when you are attaching the battery pack or performing other adjustments to the tool.

**TO TURN THE BLOWER ON/OFF (fig 3)**

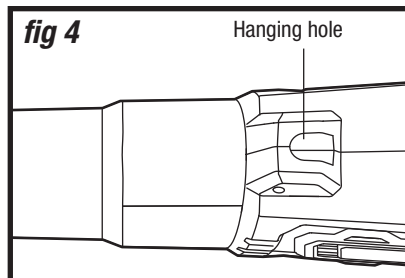
1. To turn the blower on, depress the variable-speed trigger switch.
2. The variable-speed trigger switch delivers higher speed with increased trigger pressure and lower speed with decreased trigger pressure.
3. Release the variable-speed trigger switch to turn off the blower.

**HANGING HOLE (fig 4)**

The blower is equipped with a hanging hole. The blower can be hung from a screw or nail for storage.

**TIPS FOR OPERATING THE BLOWER**

1. Always wear eye protection with side shields marked to comply with ANSI Z87.1, along with hearing protection. Failure to do so could result in objects being thrown into your eyes and other possibly serious injuries.
2. To keep from scattering debris, blow around the outer edges of a debris pile. Never blow directly into the centre of a pile.
3. Use rakes and brooms to loosen debris before blowing it to clear it. In dusty conditions, slightly dampen surfaces if water is available.
4. Watch out for children, pets, open windows, or freshly washed cars, and blow debris safely away.



### MAINTENANCE

The tool may be cleaned most effectively with compressed dry air. Always wear safety goggles when cleaning tools with compressed air. Before each use:

1. Check for damaged, missing, or worn parts.
2. Check for loose screws, misalignment or binding of moving parts, or any other condition that may affect the operation.
3. If abnormal vibration or noise occurs, turn the tool off immediately and have the problem corrected before further use.



#### WARNING!

- Do not let brake fluids, gasoline, petroleum-based products, penetrating oil, etc., come into contact with plastic parts. These substances contain chemicals that can damage, weaken, or destroy plastic.
- When servicing, use only identical replacement parts. The use of any other parts may create a hazard or cause damage to the product.
- Use only accessories that are recommended for this blower by the manufacturer. Accessories that may be suitable for one tool may become hazardous when used with another tool.
- To ensure safety and reliability, all repairs should be performed by a qualified service technician.

**TROUBLESHOOTING**

Problem	Possible causes	Solutions
The blower does not work.	The battery pack is depleted.	Charge the battery pack.
	The battery pack is too hot.	Turn off the blower and allow the battery pack to cool.

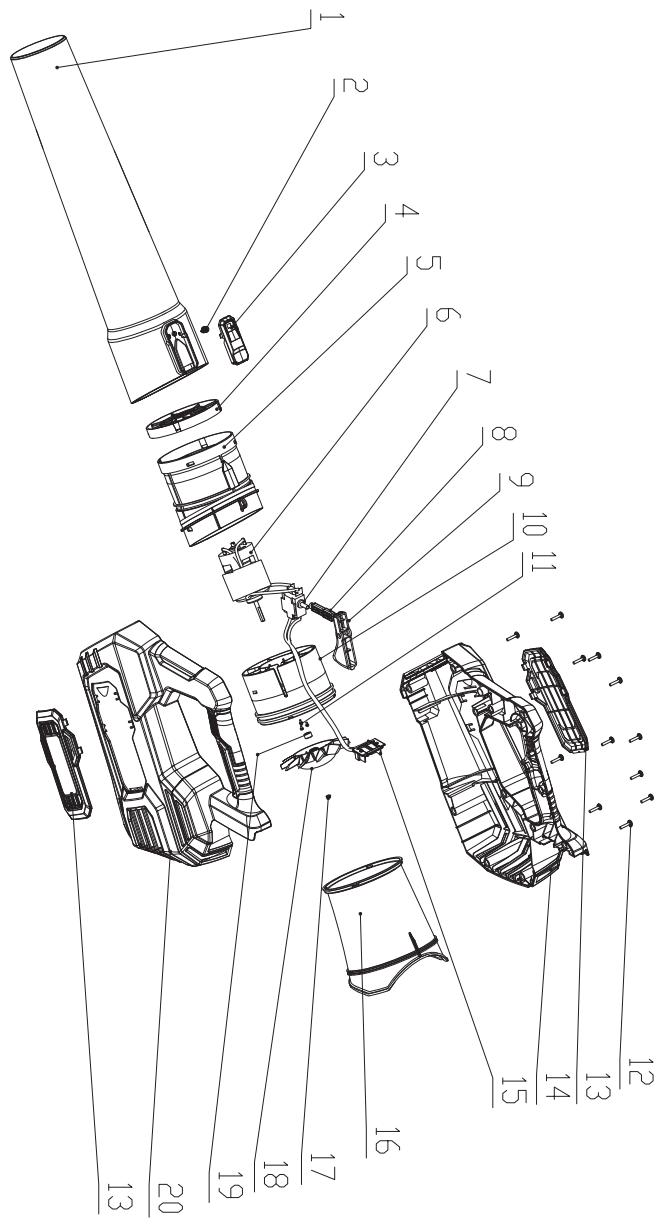
The air velocity decreases noticeably.

The air inlet is blocked by debris.

Remove the battery pack and clear the debris.

If the problem remains unsolved after performing the checks described above, call the toll-free helpline at 1-800-689-9928.

## EXPLODED VIEW



## PARTS LIST

No.	Part No.	Description
1	SC20BBL01	Blower Tube
2	SC20BBL02	Locking Spring
3	SC20BBL03	Blower Tube Button
4	SC20BBL04	Air Hood
5	SC20BBL05	Diffuser
6	SC20BBL06	Motor Assembly
7	SC20BBL07	Speed Switch
8	SC20BBL08	Trigger Putter
9	SC20BBL09	Switch Trigger
10	SC20BBL10	Motor Base

No.	Part No.	Description
11	SC20BBL11	Screw
12	SC20BBL12	Screw
13	SC20BBL13	Decorative Cover
14	SC20BBL14	Right Housing
15	SC20BBL15	Contact Receptacle Assembly
16	SC20BBL16	Current Collector
17	SC20BBL17	Nut
18	SC20BBL18	Fan
19	SC20BBL19	Bushing
20	SC20BBL20	Left Housing

If any parts are missing or damaged, or if you have any questions, please call the toll-free helpline at 1-800-689-9928.





This product is guaranteed for a period of **3 years from the date of original retail purchase** against defects in workmanship and materials, except for the following components:

- a) Component A: Batteries, chargers and carrying case, which are guaranteed for a period of 2 years from the date of original retail purchase against defects in workmanship and materials;
- b) Component B: Accessories, which are guaranteed for a period of 1 year from the date of original retail purchase against defects in workmanship and materials.

Subject to the conditions and limitations described below, this product, if returned to us with proof of purchase within the stated warranty period and if covered under this warranty, will be repaired or replaced (with the same model, or one of equal value or specification), at our option. We will bear the cost of any repair or replacement and any costs of labour relating thereto.

**These warranties are subject to the following conditions and limitations:**

- a) a bill of sale verifying the purchase and purchase date must be provided;
- b) this warranty will not apply to any product or part thereof which is worn or broken or which has become inoperative due to abuse, misuse, accidental damage, neglect or lack of proper installation, operation or maintenance (as outlined in the applicable owner's manual or operating instructions) or which is being used for industrial, professional, commercial or rental purposes;
- c) this warranty will not apply to normal wear and tear or to expendable parts or accessories that may be supplied with the product that are expected to become inoperative or unusable after a reasonable period of use;
- d) this warranty will not apply to routine maintenance and consumable items such as, but not limited to, fuel, lubricants, vacuum bags, blades, belts, sandpaper, bits, fluids, tune-ups or adjustments;
- e) this warranty will not apply where damage is caused by repairs made or attempted by others (i.e., persons not authorized by the manufacturer);
- f) this warranty will not apply to any product that was sold to the original purchaser as a reconditioned or refurbished product (unless otherwise specified in writing);
- g) this warranty will not apply to any product or part thereof if any part from another manufacturer is installed therein or any repairs or alterations have been made or attempted by unauthorized persons;
- h) this warranty will not apply to normal deterioration of the exterior finish, such as, but not limited

to, scratches, dents, paint chips, or to any corrosion or discolouring by heat, abrasive and chemical cleaners; and

- i) this warranty will not apply to component parts sold by and identified as the product of another company, which shall be covered under the product manufacturer's warranty, if any.

### **Additional Limitations**

This warranty applies only to the original purchaser and may not be transferred. Neither the retailer nor the manufacturer shall be liable for any other expense, loss or damage, including, without limitation, any indirect, incidental, consequential or exemplary damages arising in connection with the sale, use or inability to use this product.

### **Notice to Consumer**

This warranty gives you specific legal rights, and you may have other rights, which may vary from province to province. The provisions contained in this warranty are not intended to limit, modify, take away from, disclaim or exclude any statutory warranties set forth in any applicable provincial or federal legislation.

Made in China

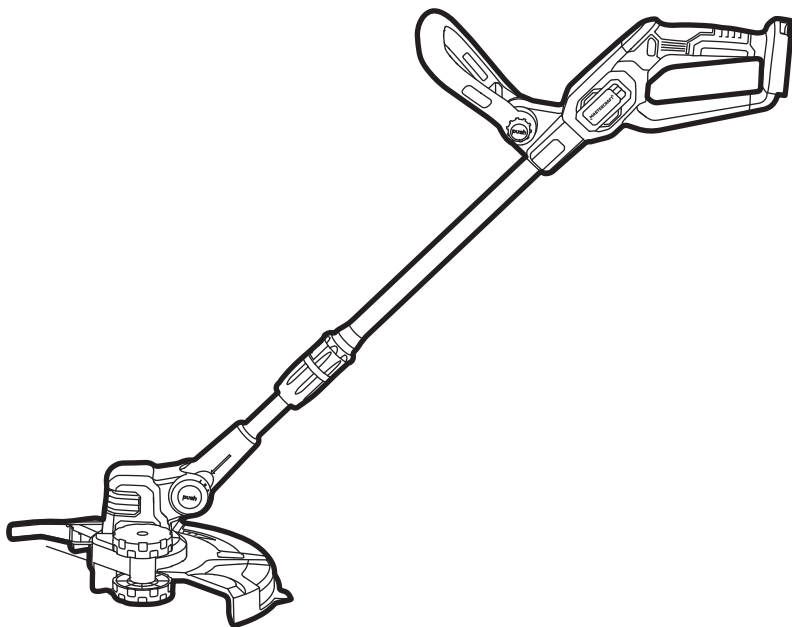
Imported by

Mastercraft Canada Toronto, Canada M4S 2B8

model no. SC20BST

**MASTERCRAFT** TM

## GRASS TRIMMER/ EDGER



### **IMPORTANT:**

Read and understand this instruction manual thoroughly before using the product.

## **INSTRUCTION MANUAL**



## TABLE OF CONTENTS

Technical Specifications	4
Safety Guidelines	5
Key Parts Diagram	10
Operating Instructions	11
Maintenance	19
Troubleshooting	20
Parts List	21
Warranty	23

### NOTE:

If any parts are missing or damaged, or if you have any questions, please call our toll-free helpline at 1-800-689-9928.



### SAVE THESE INSTRUCTIONS

- This manual contains important safety and operating instructions. Read all instructions and follow them when using this product.

**TECHNICAL SPECIFICATIONS**

Rated Voltage	20 V d.c.
No-load Speed	7,700 RPM
Cutting-line Diameter	0.065" (1.65 mm)
Cutting Width	12" (30.5 cm)

\*Maximum battery voltage without workload; with workload nominal voltage is 18 V.

### SAFETY GUIDELINES:



#### WARNING!

Safety symbols in this Instruction Manual are used to flag possible dangers. The safety symbols and their explanations require your full understanding. The safety warnings do not, by themselves, eliminate any danger, nor are they substitutes for proper accident prevention measures.



#### WARNING!

This Safety Alert Symbol indicates caution, warning, or danger. Failure to obey a safety warning can result in serious injury to yourself or others. To reduce the risk of injury, fire, or electric shock, always follow the safety precautions.

### KNOW YOUR TOOL

To operate this tool, carefully read this Instruction Manual and all labels affixed to the grass trimmer before using. Keep this instruction manual available for future reference.

### IMPORTANT

This tool should only be serviced by a qualified service technician. For more information, call the toll-free helpline at 1-800-689-9928.

### READ ALL INSTRUCTIONS THOROUGHLY.

### SAVE THESE INSTRUCTIONS.

### GENERAL POWER TOOL SAFETY WARNINGS



#### WARNING!

**Read all safety warnings, instructions, illustrations and specifications provided with this power tool.** Failure to follow all instructions listed below may result in electric shock, fire and/or serious injury.

### SAVE ALL WARNINGS AND INSTRUCTIONS FOR FUTURE REFERENCE.

The term “power tool” in the warnings refers to your mains-operated (corded) power tool or battery-operated (cordless) power tool.

### WORK AREA SAFETY

- **Keep work area clean and well lit.** Cluttered or dark areas invite accidents.
- **Do not operate power tools in explosive atmospheres, such as in the presence of flammable liquids, gases or dust.** Power tools create sparks which may ignite the dust or fumes.
- **Keep children and bystanders away while operating a power tool.** Distractions can cause you to lose control.

- **Avoid dangerous environments.** Don't use appliances in damp or wet locations.

## PERSONAL SAFETY

- **Stay alert, watch what you are doing and use common sense when operating a power tool. Do not use a power tool while you are tired or under the influence of drugs, alcohol or medication.** A moment of inattention while operating power tools may result in serious personal injury.
- **Always use personal protective equipment.** Personal protective equipment such as eye protection, dust mask, non-skid safety shoes, hard hat and/or hearing protection used for appropriate conditions will reduce personal injuries.
- **Prevent unintentional starting. Ensure the switch is in the off-position before connecting to power source and/or battery pack, picking up or carrying the tool.** Carrying power tools with your finger on the switch or energising power tools that have the switch on invites accidents.
- **Remove any adjusting key or wrench before turning the power tool on.** A wrench or a key left attached to a rotating part of the power tool may result in personal injury.
- **Do not overreach. Keep proper footing and balance at all times.** This enables better control of the power tool in unexpected situations.
- **Dress properly. Do not wear loose clothing or jewellery. Keep your hair and clothing away from moving parts.** Loose clothes, jewellery or long hair can be caught in moving parts.
- **If devices are provided for the connection of dust extraction and collection facilities, ensure these are connected and properly used.** Use of dust collection can reduce dust-related hazards.
- **Do not let familiarity gained from frequent use of tools allow you to become complacent and ignore tool safety principles.** A careless action can cause severe injury within a fraction of a second.

## POWER TOOL USE AND CARE

- **Do not force the power tool. Use the correct power tool for your application.** The correct power tool will do the job better and safer at the rate for which it was designed.
- **Do not use the power tool if the switch does not turn it on and off.** Any power tool that cannot be controlled with the switch is dangerous and must be repaired.
- **Disconnect the plug from the power source and/or remove the battery pack, if detachable, from the power tool before making any adjustments, changing accessories, or storing power tools.** Such preventive safety measures reduce the risk of starting the power tool accidentally.
- **Store idle power tools out of the reach of children and do not allow persons unfamiliar with the power tool or these instructions to operate the power tool.** Power tools are dangerous in the hands of untrained users.



- **Maintain power tools and accessories. Check for misalignment or binding of moving parts, breakage of parts and any other condition that may affect the power tool's operation. If damaged, have the power tool repaired before use.** Many accidents are caused by poorly maintained power tools.
- **Keep cutting tools sharp and clean.** Properly maintained cutting tools with sharp cutting edges are less likely to bind and are easier to control.
- **Use the power tool, accessories and tool bits etc. in accordance with these instructions, taking into account the working conditions and the work to be performed.** Use of the power tool for operations different from those intended could result in a hazardous situation.
- **Keep handles and grasping surfaces dry, clean and free from oil and grease.** Slippery handles and grasping surfaces do not allow for safe handling and control of the tool in unexpected situations.
- **Keep cables away from the working area of the tool.** During operation cables may be hidden from view and can be accidentally damaged by the tool.

## BATTERY TOOL USE AND CARE

- **Recharge only with the charger specified by the manufacturer.** A charger that is suitable for one type of battery pack may create a risk of fire when used with another battery pack.
- **Use power tools only with specifically designated battery packs.** Use of any other battery packs may create a risk of injury and fire.
- **When battery pack is not in use, keep it away from other metal objects, like paper clips, coins, keys, nails, screws or other small metal objects, that can make a connection from one terminal to another.** Shorting the battery terminals together may cause burns or a fire.
- **Under abusive conditions, liquid may be ejected from the battery; avoid contact. If contact accidentally occurs, flush with water. If liquid contacts eyes, additionally seek medical help.** Liquid ejected from the battery may cause irritation or burns.
- **Do not use a battery pack or tool that is damaged or modified.** Damaged or modified batteries may exhibit unpredictable behaviour resulting in fire, explosion or risk of injury.
- **Do not expose a battery pack or tool to fire or excessive temperature.** Exposure to fire or temperature above 130°C (265°F) may cause explosion.
- **Follow all charging instructions and do not charge the battery pack or tool outside the temperature range specified in the instructions.** Charging improperly or at temperatures outside the specified range may damage the battery and increase the risk of fire.
- **Do not modify or attempt to repair the appliance or the battery pack (as applicable) except as indicated in the instructions for use and care.**

## SERVICE

- **Have your power tool serviced by a qualified repair person using only identical replacement parts.** This will ensure that the safety of the power tool is maintained.

- **Never service damaged battery packs.** Service of battery packs should only be performed by the manufacturer or authorized service providers.

### ADDITIONAL SAFETY GUIDELINES


- **The label on your tool may include the following symbols. The symbols and their definitions are as follows:**

V ..... Volts

A ..... Amperes

W ..... Watts

min ..... Minutes

 or d.c. .... Direct current

$n_0$  ..... No-load speed

RPM ..... Revolutions per minute



..... Class II construction



..... WARNING—To reduce the risk of injury, user must read instruction manual.



..... WARNING—To reduce the risk of injury, always wear eye protection.



..... WARNING—To reduce the risk of injury, always wear ear protection.



### WARNING!

To reduce the risk of electric shock or damage to the charger and battery, use only the Mastercraft® batteries and chargers listed.

#### BATTERY PACKS

054-3124-0, 054-7553-4, 054-7557-6

#### CHARGERS

054-3126-6, 054-7559-2

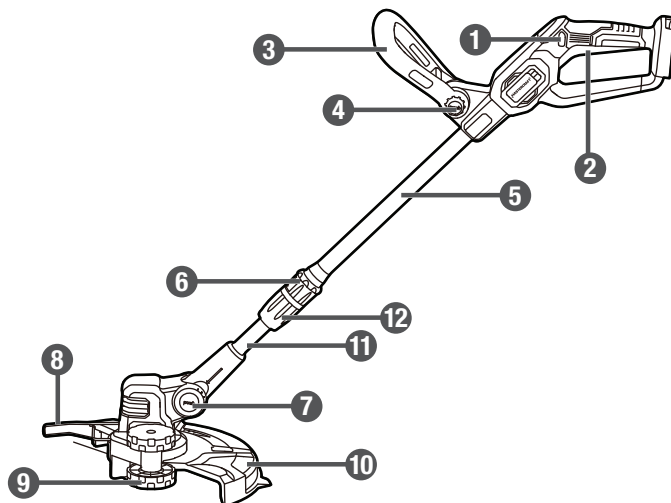
- **When replacing the cutting line, use no more than 0.065" (1.65 mm) nylon line;** using heavier lines than recommended by the manufacturer increases the load on the motor and reduces its operating speed. This results in overheating and damage to the trimmer.
- **To reduce the risk of serious injury, never use wire or metal-reinforced line or other material in place of the nylon cutting lines.** Pieces of wire could break off and be thrown at high speed toward the operator or bystanders.
- **Replace a cracked, damaged or worn-out cutting head immediately, even if damage is limited to superficial cracks.** Such attachments may shatter at high speed and cause serious or fatal injury.
- **For best results, your battery tool should be stored, charged and used in a location where the temperature is more than 5°C (41°F) but less than 40°C (104°F).** Do not store outside or in vehicles.

- **If the power tool should start to vibrate abnormally or become noisy, stop the motor and check immediately for the cause.** Abnormal noise is generally a warning of trouble.
- **Keep guards in place and in working order. Make sure all proper guards and other safety devices are properly and securely attached before using this product. Do not operate without guards in place.**
- **Use right appliance.** Do not use appliance for any job except that for which it is intended.
- **Do not charge the battery pack in rain, or in wet locations.**
- **Don't use in rain.**
- **Keep hands and feet away from cutting area.**
- **Do not open or mutilate the battery.** Released electrolyte is corrosive and may cause damage to the eyes or skin. It may be toxic if swallowed.
- **Battery tools do not have to be plugged into an electrical outlet; therefore, they are always in operating condition.** Be aware of possible hazards even when the tool is not operating. Take care when performing maintenance or service.
- **Do not wash with a hose; avoid getting water in motor and electrical connections.**
- **SAVE THESE INSTRUCTIONS.** Refer to them frequently and use them to instruct others who may use this tool. If you lend this tool to someone else, also lend these instructions to them to prevent misuse of the product and possible injury.

**SAVE THESE INSTRUCTIONS!**

**PACKAGE CONTENTS:**

Cordless trimmer, safety guard, auxiliary handle, flower guard, edging wheel, 2 screws.

**KEY PARTS DIAGRAM**

No.	Description
1	Lock-off button
2	On/off switch
3	Auxiliary handle
4	Handle-unlock button
5	Upper shaft
6	Upper shaft rotation collar

No.	Description
7	Angle-adjustment button
8	Flower guard
9	Edging wheel
10	Safety guard
11	Lower shaft
12	Height-adjustment collar

Before attempting to use this tool, become familiar with all of its operating features and safety requirements. For optimum performance and safety, read the following operating instructions carefully before using.

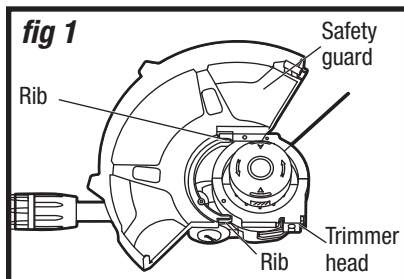
**WARNING!**

- Remove the trimmer from the package and examine it carefully. Do not discard the carton or any packaging material until all parts have been examined.
- If any part of the trimmer is missing or damaged, do not attach the battery pack to the tool or use the tool until the part has been repaired or replaced. Failure to heed this warning could result in serious injury.
- Do not allow familiarity with the trimmer to cause a lack of alertness. A fraction of a second of carelessness is enough to cause severe injury.

## **OPERATING INSTRUCTIONS**

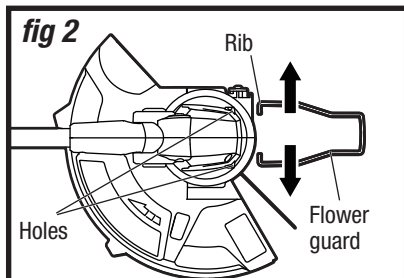
### **INSTALL/REMOVE THE SAFETY GUARD (fig 1)**

1. Insert the ribs of the safety guard into the slots on the trimmer head.
2. Align the holes on the safety guard with the holes on the trimmer head, and then use the screws (included) to lock the safety guard.



### **INSTALL/REMOVE THE FLOWER GUARD (fig 2)**

1. Widen the flower guard, and then insert ribs of the flower guard into the holes on the trimmer head.
2. The flower guard can be adjusted to different angles according to your operation.
3. Simply widen the flower guard to remove the flower guard.



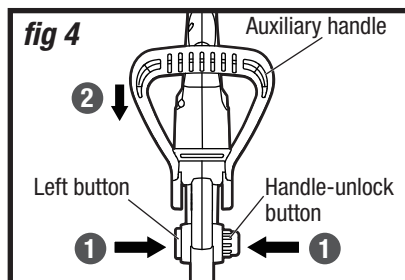
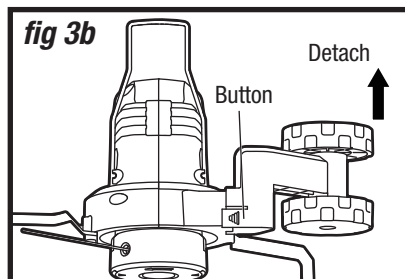
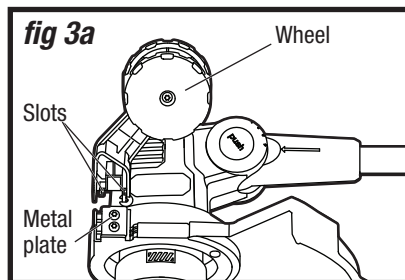
**NOTICE:** Before trimming or edging make sure the flower guard is locked firmly in position.

**INSTALL THE EDGING WHEEL (fig 3)**

1. Align two slots on the wheel with the metal plate on the trimmer head, and then fully insert the wheel onto the metal plate.
2. To remove the wheel, press and hold the button on the wheel, and then pull out the wheel in the "Detach" direction.

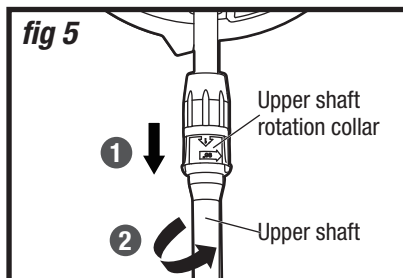
**ADJUST THE AUXILIARY HANDLE (fig 4)**

1. Press the handle-unlock button and the left button together, slide the auxiliary handle onto the two buttons and then release the buttons to lock the handle.
2. Rotate the auxiliary handle to the most comfortable and balanced position.
3. Then release the handle-unlock button. Raise or lower the auxiliary handle to make sure it is fixed firmly.



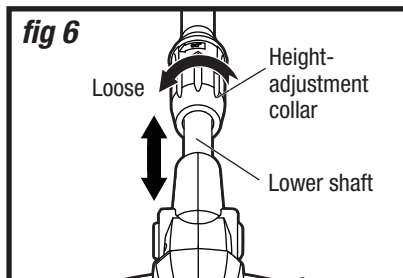
### ADJUST THE DIRECTION OF UPPER SHAFT (fig 5)

1. Pull the upper shaft rotation collar backward and hold on the knob.
2. Turn the upper shaft for 90° in a clockwise direction and then release the knob to lock the upper shaft.



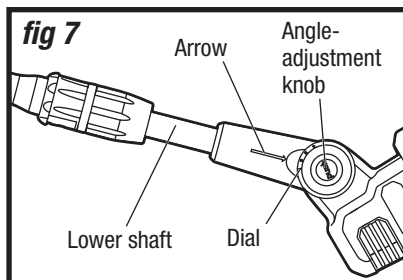
### ADJUST THE HEIGHT (fig 6)

1. Rotate the height-adjustment collar in the "Loose" direction to unlock the lower shaft.
2. Adjust the length of the lower shaft to be most comfortable for you.
3. Rotate the height-adjustment collar in the opposite direction to lock the lower shaft.



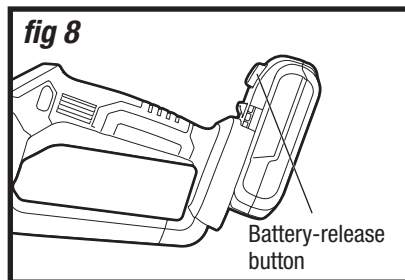
### ADJUST THE CUTTING ANGLE (fig 7)

Press the angle-adjustment knob, rotate the shaft, align the arrow with the number from 1 to 4 on the dial to choose from different cutting angles one that is most suitable for you, and then release the button to lock the cutting angle.



**TO ATTACH BATTERY PACK (fig 8)**

1. Make sure that the switch is in the OFF position.
2. Align the raised portion on the battery pack with the grooves on the bottom of the tool, and then slide the battery pack onto the tool as shown.
3. Ensure that the battery-release button on the battery pack snaps into place and the battery pack is secured to the tool before beginning operation.

**TO DETACH THE BATTERY PACK (fig 8)**

1. Ensure that the switch is in the OFF position.
2. Depress the battery-release button located on the front of the battery pack to release the battery pack.
3. Pull rearward on the battery pack to remove it from the tool.

**NOTICE:** When placing a battery pack on the tool, be sure that the raised rib on the battery pack aligns with the groove on the cordless trimmer and the latches snap into place properly. Improper assembly of the battery pack can cause damage to internal components.

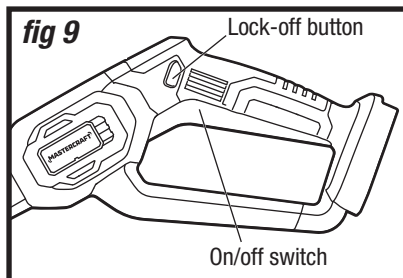
**WARNING!**

- To avoid the possibility of accidental starting, always take care not to activate the on/off switch when you are attaching the battery pack or performing other adjustments to the tool.



### TO START/STOP THE TRIMMER (fig 9)

1. To turn the trimmer on, press the lock-off button and then depress the on/off switch.
2. To turn it off, release the on/off switch and allow the trimmer to come to a complete stop.

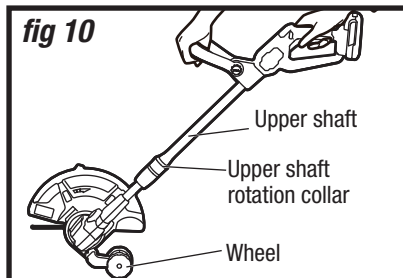


### TRIMMING

1. Do not cut wet grass because it tends to stick to the trimmer head and guard, prevents proper discharge of grass clippings, and could cause you to slip and fall.
2. Regularly remove clippings and dirt around the trimmer head. Ensure the trimmer is switched off.
3. Hold rear handle with one hand and auxiliary handle with the other hand. Keep unit below waist level, and stand firmly with your feet apart.
4. Do not move the trimmer too fast as this will result in ineffective cutting and possible damage.
5. Cut repeatedly from up and down in layers when the grass is very high. Keep the trimmer head at an angle of about 30° to the ground when trimming. Avoid pressing it against the ground as this can ruin the lawn and damage the trimmer head.

### EDGING (fig 10)

1. Adjust the lower shaft to the place where the arrow is aligned with 4 on the dial (refer to **"ADJUST THE CUTTING ANGLE"**).
2. Turn the upper shaft 90° in a clockwise direction and release the upper shaft rotation collar to lock the shaft (refer to **"ADJUST THE DIRECTION OF UPPER SHAFT"**).
3. Install the battery, hold the rear handle with one hand and auxiliary handle with another hand, and turn on the trimmer for edging.



### NOTICE:

- Number 4 on the dial is the position only for storage and edging.
- Number 1 to 3 on the dial is the position for trimming. Choose the position number which is suitable for you and keep the trimmer head at an angle of about 30° to the ground when trimming.



### WARNING!

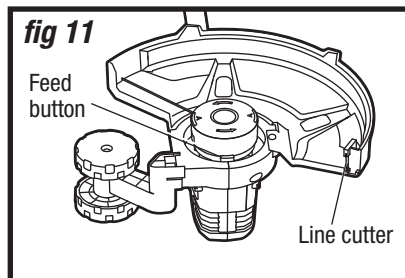
- Always wear eye protection and heavy clothing.
- Without bending over, keep line near and parallel to the ground (perpendicular when edging).
- Make sure that the line is fed out before operation. Make sure the motor is up to full speed before trimming.
- Use only 0.065" (1.65 mm) diameter nylon cutting line.

**AUTOMATIC LINE FEED SYSTEM (fig 11)**

When initially switching on the trimmer, a small length of line is fed out. Each time the tool is started from rest it will advance same amount trimmer line.

If the noise of the line being cut can't be heard, more line will be fed out. To feed more line, it is first necessary to allow the trimmer to stop completely, and then restart, allowing the motor to reach full speed. Repeat above until you hear the lines hitting against the line cutter.

A “clattering” noise will be heard when the lines hit the line cutter. Do not be alarmed; this is quite normal. After several seconds the line will be cut to the correct length and the noise will reduce as the motor reaches full speed.



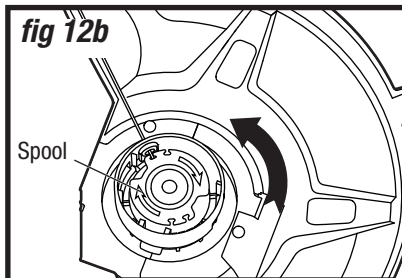
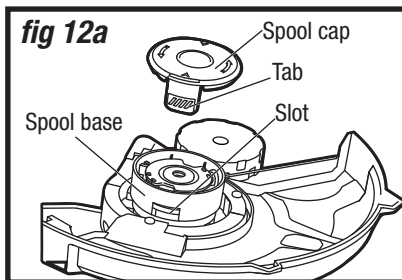
**NOTICE:** Remove the protective film on the line cutter before operating the tool.

## MANUALLY FEED THE LINE (fig 12)

If required, line can be fed out manually. Before manually feeding, remove the battery first. To operate, press and release manual line feed button (**fig 11**), while gently pulling out the lines until the lines reach the line cutter.

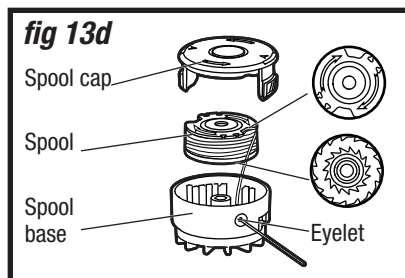
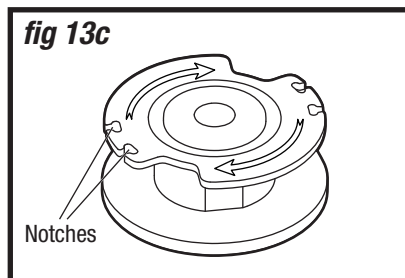
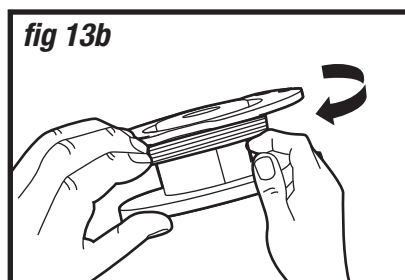
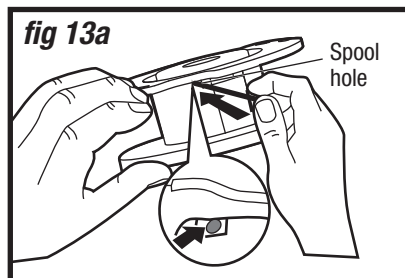
If the line extends past the line cutter, too much line has been fed out. If too much line is fed out:

1. Press two tabs on the spool cap, remove tabs from the slots, and then remove the spool cap from the spool base.
2. Turn the spool counter-clockwise until the line is at the desired length.
3. Press two tabs, align tabs with slots, and then press the spool cap onto the spool base.



### WIND THE SPOOL WITH NEW LINE (fig 13)

1. Detach the spool cap and spool from the spool base (refer to **fig 12**). Remove the old cutting line from the spool.
2. Insert about 5/8" (15 mm) of line into the spool hole (**fig 13a**) and wind line in the direction of the arrows on the top of the spool (**fig 13b**). Ensure that the line is neatly coiled on the spool. Failure to do so will impair the efficiency of the automatic line feed.
3. Leave approximately 4" (10 cm) of line unwound and place it through two notches on the spool (**fig 13c**).
4. Release the cutting line from notches and insert the line through the eyelet. Place the spool onto the spool base (**fig 13d**).
5. Press two tabs of the spool cap, align tabs with slots of spool base, and then press the spool cap onto the spool base (**fig 12a**).



## MAINTENANCE

### CHECK FOR DAMAGED/WORN PARTS BEFORE EACH USE

Check the trimmer head, safety guard and auxiliary handle and replace any parts that are cracked, warped, bent, or damaged in any way. The line cutter on the edge of the guard can dull over time. It is recommended that you periodically sharpen it with a file or replace it with a new blade.

### CLEAN THE TRIMMER AFTER EACH USE

1. Clear any grass that may have wrapped itself around the motor shaft or trimmer head.
2. Use only a clean, dry and soft cloth to clean the tool. Never let any liquid get inside the tool; never immerse any part of the tool into a liquid.
3. Keep the air vents on the trimmer head free from debris at all times.

### STORAGE

Clean the tool thoroughly before storing it. Store the unit in a dry, well-ventilated area, locked-up or up high, out of the reach of children. Keep away from corrosive agents, such as garden chemicals and de-icing salts.



### WARNING!

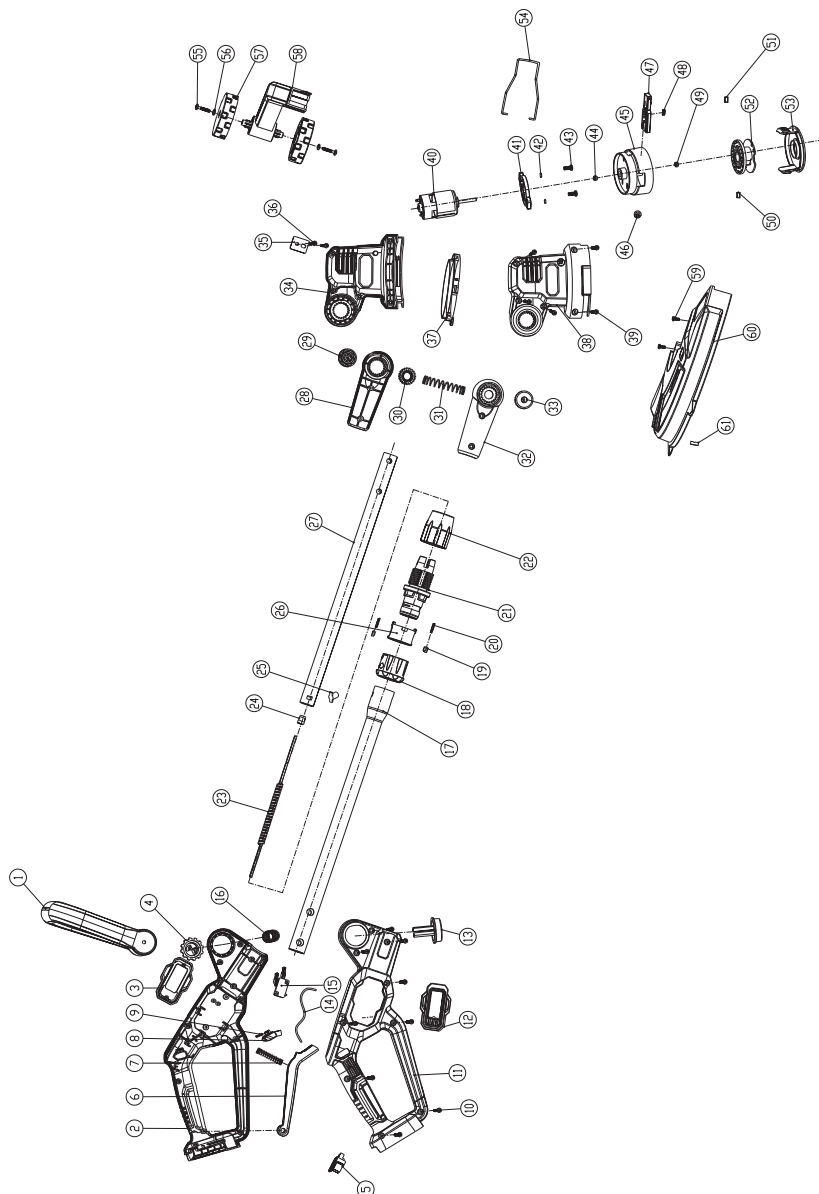
- To avoid accidents, always remove the battery pack from the string trimmer before cleaning or performing any maintenance.
- Do not let brake fluids, gasoline, petroleum-based products, penetrating oil, etc., come into contact with plastic parts. These substances contain chemicals that can damage, weaken, or destroy plastic.
- When servicing, use only identical replacement parts. The use of any other parts may create a hazard or cause damage to the product.
- Use only accessories that are recommended for this trimmer by the manufacturer. Accessories that may be suitable for one tool may become hazardous when used with another tool.
- To ensure safety and reliability, all repairs should be performed by a qualified service technician.

**TROUBLESHOOTING**

Problem	Possible causes	Solutions
The trimmer doesn't work.	The battery is depleted.	Charge the battery pack.
	The battery pack is overloaded.	Decrease the load on the trimmer.
	The battery pack is too hot.	Cool the battery pack and then restart the tool again.
Trimmer head will not advance line.	The motor shaft or trimmer head is bound with grass.	Stop the trimmer, remove the battery, and clean the motor shaft and trimmer head.
	Cutting line is not wound well. The line is tangled.	Manually feed the line first. If the line still cannot feed out, rewind the line.
	There is not enough line on the spool.	Replace the cutting line. Follow the section "WIND THE SPOOL WITH NEW LINE" in this manual.
Excessive vibrations/noise.	Line spool is not wound well.	Rewind the line.

If the problem remains unsolved after performing the checks described above, call the toll-free helpline at 1-800-689-9928.

## EXPLODED VIEW



No.	Part No.	Description
1	SC20BST01	Secondary Handle
2	SC20BST02	Right Handle
3	SC20BST03	Right Decorative Cover
4	SC20BST04	Rotation Button
5	SC20BST05	Contact Receptacle
6	SC20BST06	Switch Button
7	SC20BST07	Switch Spring
8	SC20BST08	Lock-off Button
9	SC20BST09	Spring
10	SC20BST10	Screw
11	SC20BST11	Left Handle
12	SC20BST12	Left Decorative Cover
13	SC20BST13	Button
14	SC20BST14	Internal Wire
15	SC20BST15	Micro Switch
16	SC20BST16	Button Spring
17	SC20BST17	Upper Aluminum Tube
18	SC20BST18	Clamping Sleeve
19	SC20BST19	Supporting Plate
20	SC20BST20	Spring
21	SC20BST21	Threaded Sleeve
22	SC20BST22	Height-adjustment Collar
23	SC20BST23	Spring Line
24	SC20BST24	Sleeve
25	SC20BST25	Aluminum Tube Limit Block
26	SC20BST26	Locking Sleeve
27	SC20BST27	Lower Aluminum Tube
28	SC20BST28	Right Swivel Arm
29	SC20BST29	Button
30	SC20BST30	Angle-adjustment Gear
31	SC20BST31	Angle-adjustment Spring

No.	Part No.	Description
32	SC20BST32	Left Swivel Arm
33	SC20BST33	Angle-adjustment Button
34	SC20BST34	Right Housing
35	SC20BST35	Fixing Plate
36	SC20BST36	Screw
37	SC20BST37	Anti-dust Board
38	SC20BST38	Left Housing
39	SC20BST39	Screw
40	SC20BST40	Motor
41	SC20BST41	Motor Base
42	SC20BST42	Spring Washer
43	SC20BST43	Screw
44	SC20BST44	Square Nut
45	SC20BST45	Base
46	SC20BST46	Eyelet Block
47	SC20BST47	Feed Button
48	SC20BST48	Spring
49	SC20BST49	Nut
50	SC20BST50	Counterweight
51	SC20BST51	Counterweight
52	SC20BST52	Spool
53	SC20BST53	Upper Cover
54	SC20BST54	Flower Guard
55	SC20BST55	Screw
56	SC20BST56	Flat Washer
57	SC20BST57	Wheel
58	SC20BST58	Wheel Carrier
59	SC20BST59	Screw
60	SC20BST60	Safety Guard
61	SC20BST61	Line Cutter

If any parts are missing or damaged, or if you have any questions, please call the toll-free helpline at 1-800-689-9928.





This product is guaranteed for a period of **3 years from the date of original retail purchase** against defects in workmanship and materials, except for the following components:

- a) Component A: Batteries, chargers and carrying case, which are guaranteed for a period of 2 years from the date of original retail purchase against defects in workmanship and materials;
- b) Component B: Accessories, which are guaranteed for a period of 1 year from the date of original retail purchase against defects in workmanship and materials.

Subject to the conditions and limitations described below, this product, if returned to us with proof of purchase within the stated warranty period and if covered under this warranty, will be repaired or replaced (with the same model, or one of equal value or specification), at our option. We will bear the cost of any repair or replacement and any costs of labour relating thereto.

**These warranties are subject to the following conditions and limitations:**

- a) a bill of sale verifying the purchase and purchase date must be provided;
- b) this warranty will not apply to any product or part thereof which is worn or broken or which has become inoperative due to abuse, misuse, accidental damage, neglect or lack of proper installation, operation or maintenance (as outlined in the applicable owner's manual or operating instructions) or which is being used for industrial, professional, commercial or rental purposes;
- c) this warranty will not apply to normal wear and tear or to expendable parts or accessories that may be supplied with the product that are expected to become inoperative or unusable after a reasonable period of use;
- d) this warranty will not apply to routine maintenance and consumable items such as, but not limited to, fuel, lubricants, vacuum bags, blades, belts, sandpaper, bits, fluids, tune-ups or adjustments;
- e) this warranty will not apply where damage is caused by repairs made or attempted by others (i.e., persons not authorized by the manufacturer);
- f) this warranty will not apply to any product that was sold to the original purchaser as a reconditioned or refurbished product (unless otherwise specified in writing);
- g) this warranty will not apply to any product or part thereof if any part from another manufacturer is installed therein or any repairs or alterations have been made or attempted by unauthorized persons;

- h) this warranty will not apply to normal deterioration of the exterior finish, such as, but not limited to, scratches, dents, paint chips, or to any corrosion or discolouring by heat, abrasive and chemical cleaners; and
- i) this warranty will not apply to component parts sold by and identified as the product of another company, which shall be covered under the product manufacturer's warranty, if any.

### **Additional Limitations**

This warranty applies only to the original purchaser and may not be transferred. Neither the retailer nor the manufacturer shall be liable for any other expense, loss or damage, including, without limitation, any indirect, incidental, consequential or exemplary damages arising in connection with the sale, use or inability to use this product.

### **Notice to Consumer**

This warranty gives you specific legal rights, and you may have other rights, which may vary from province to province. The provisions contained in this warranty are not intended to limit, modify, take away from, disclaim or exclude any statutory warranties set forth in any applicable provincial or federal legislation.

Made in China

Imported by

Mastercraft Canada Toronto, Canada M4S 2B8