



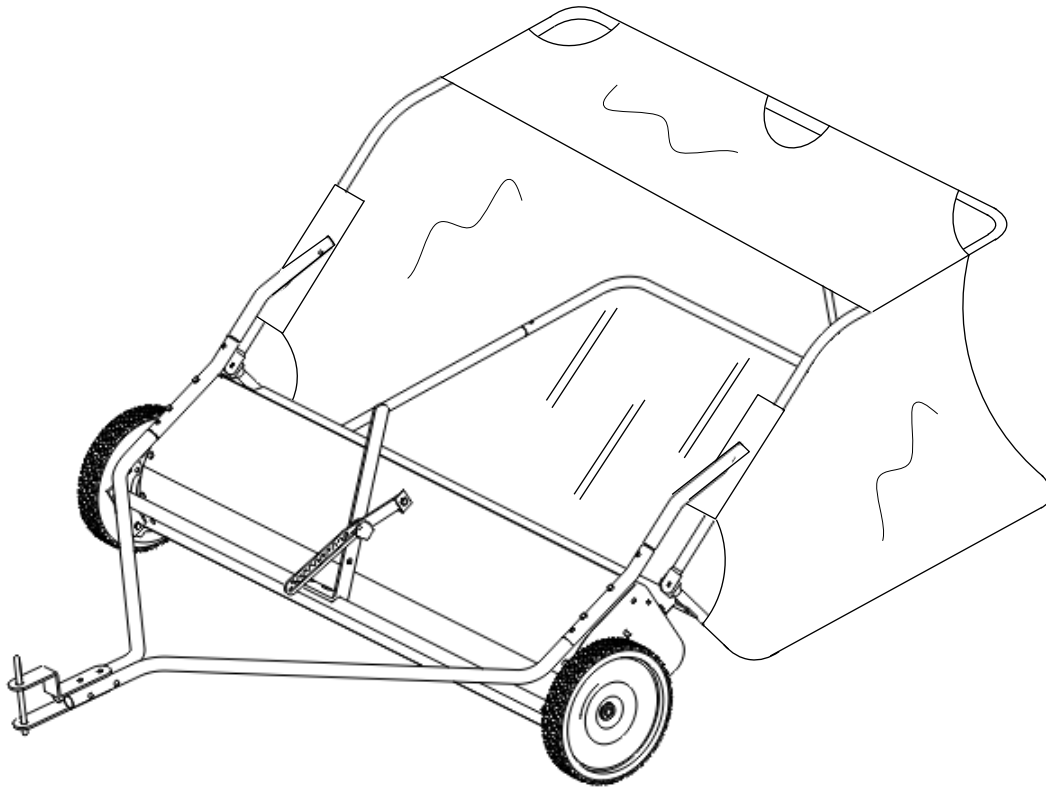
Precision

LSP48



USE AND CARE GUIDE

48 IN. LAWN SWEEPER



Questions, problems, missing parts? Before returning to the store,
call Precision Customer Service
8 a.m. – 5 p.m., CST, Monday-Friday

1-800-225-5891

PRECISIONPRODINC.COM

THANK YOU

We appreciate the trust and confidence you have placed in Precision through the purchase of this 48 in. Lawn Sweeper. We strive to continually create quality products designed to enhance your home. Visit us online to see our full line of products available for your home improvement needs. Thank you for choosing Precision!

Table of Contents

Table of Contents.....	2	Maintenance.....	11
Safety Information.....	2	Storage.....	11
SAFETY INSTRUCTIONS.....	2	Service Parts.....	12
Pre-Assembly.....	3	48 in. Lawn sweeper.....	12
Planning Assembly.....	3	Service Parts (continued).....	13
Tools required.....	3	48 in. Lawn sweeper.....	13
Hardware and tools Included.....	3	Warranty.....	14
Pre-Assembly (continued).....	4	12 month limited warranty for accessories.....	14
Package Contents.....	4	What is Covered.....	14
Assembly.....	5-10	What is Not Covered.....	14
Operation.....	11		
Troubleshooting.....	11		

Safety Information

SAFETY INSTRUCTIONS

- Tractor braking and stability may be affected with the attachment of this unit. Be aware of changing conditions on slopes. Refer to safety rules in your tractor owner's manual concerning safe operation on slopes. **STAY OFF STEEP SLOPES!**
- Keep adults, children and animals at a safe distance.
- Never allow children to operate the towing vehicle. Do not allow adults to operate the vehicle without having read the owner's manual or receiving proper instruction.
- Always wear substantial footwear. Do not wear loose fitting clothing that may get caught in moving parts.
- Always begin with the transmission in first (low) gear and the engine at low speed, and gradually increase speed as conditions permit.
- This equipment should be operated at reduced speed(s) on rough terrain and on hillsides to prevent tipping or loss of control.
- Stay alert for holes in the terrain and other hidden hazards.
- Always operate up and down a slope, never across the face of a slope.
- The tractor and attachment should be stopped and inspected for damage after striking a foreign object. Any damage should be repaired before restarting and operating the equipment.
- Keep the tractor and attachment in good operating condition and keep safety devices in place.
- Keep all nuts, bolts and screws tight to be sure the equipment is in safe working condition.



DANGER: STAY OFF STEEP SLOPES!



WARNING: Do not operate close to creeks, ditches or public highways.



DANGER: Do not allow anyone to ride or sit on the tow behind equipment during operation.



IMPORTANT: Read and understand your tractor owner's manual and safety rules. Know how to operate your tractor before using any attachment.



WARNING: Do not exceed maximum towing speed of 4 miles per hour.



CAUTION: Do not allow the Hopper Dump Rope to have too much slack when operating. The rope can get caught in the brushes, causing injury.

Pre-Assembly

PLANNING ASSEMBLY

Remove the Hardware from the blister pack and verify that all the Hardware and Tools shown are included.



NOTE: Wrenches are included for assembly. Allen wrench is used to tighten brushes.

TOOLS REQUIRED

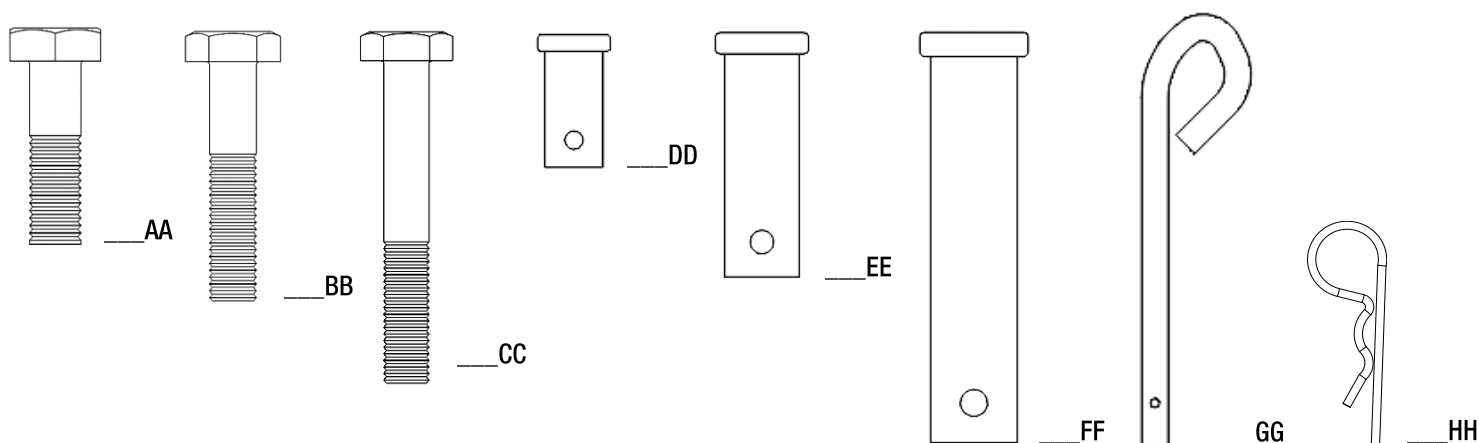


Safety goggles

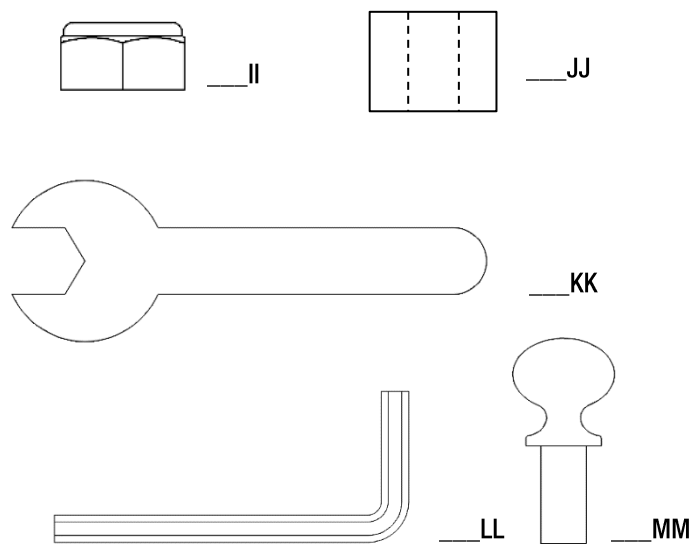
HARDWARE AND TOOLS INCLUDED



NOTE: Hardware not shown to actual size.

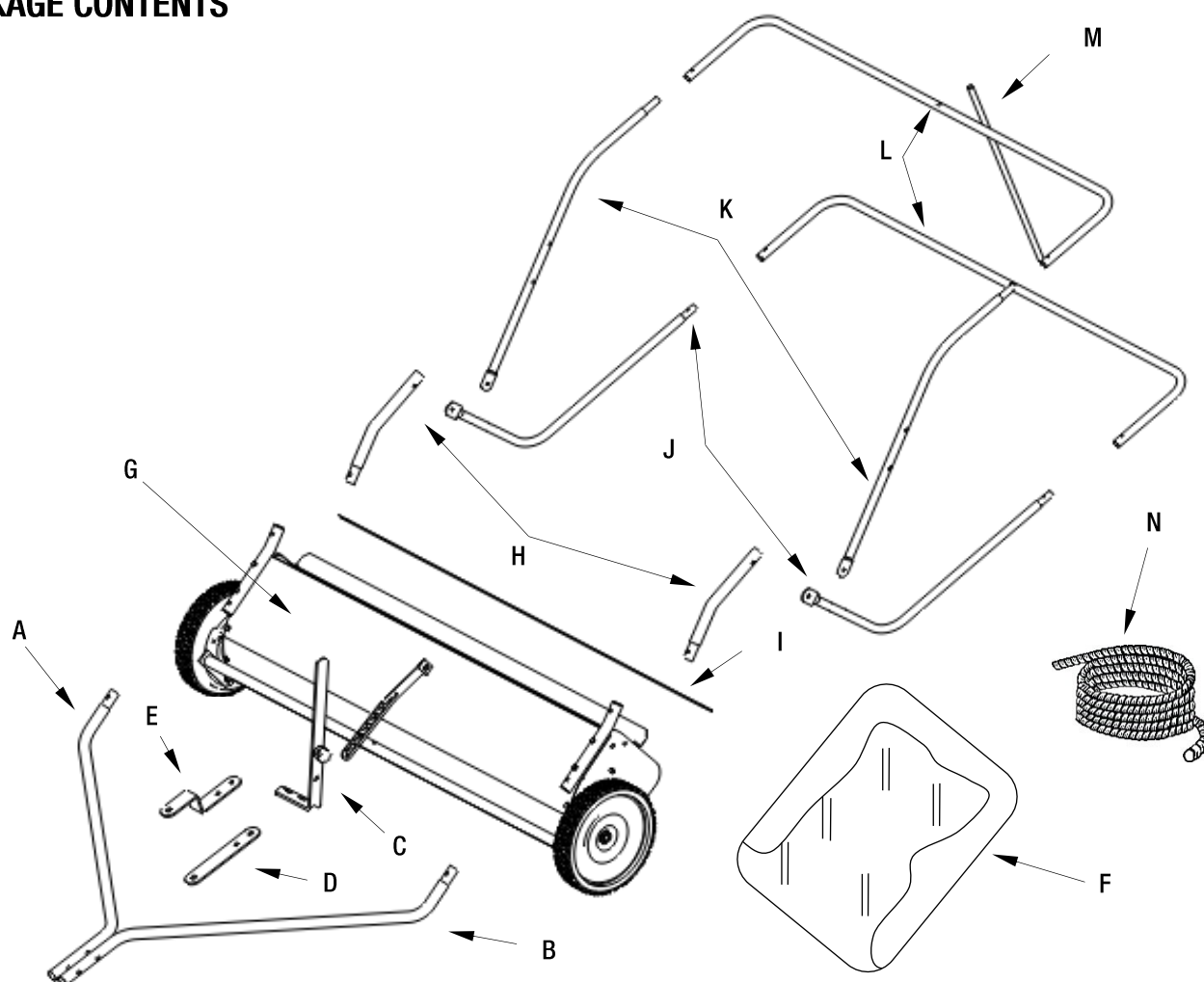


Part	Description	Quantity
AA	Hex Head Bolt M8x65	2
BB	Hex Head Bolt M8x47	2
CC	Hex Head Bolt M8x38	2
DD	Clevis Pin Ø8x15	2
EE	Clevis Pin Ø6x30	2
FF	Clevis Pin Ø8x48	2
GG	Hitch Pin	1
HH	Hitch Pin Clip 03	7
II	Nylock Nut M8	6
JJ	Hitch Spacer	2
KK	Wrench	2
LL	Allen Wrench	1
MM	Thumb Screw	1



Pre-Assembly (continued)

PACKAGE CONTENTS



Part	Description	Quantity
A	Hitch Arm R.H.	1
B	Hitch Arm L.H.	1
C	Height Adjustment Handle Assembly	1
D	Clevis Plate (straight)	1
E	Clevis Plate	1
F	Hopper Bag	1
G	Sweeper Housing Assembly	1
H	Bag Arm Tube	2
I	Bag Frame Strap	1
J	Lower Hopper Side Tube	2
K	Upper Hopper Side Tube	2
L	Rear Hopper Tube	2
M	Hopper Support Rod	1
N	Rope	1

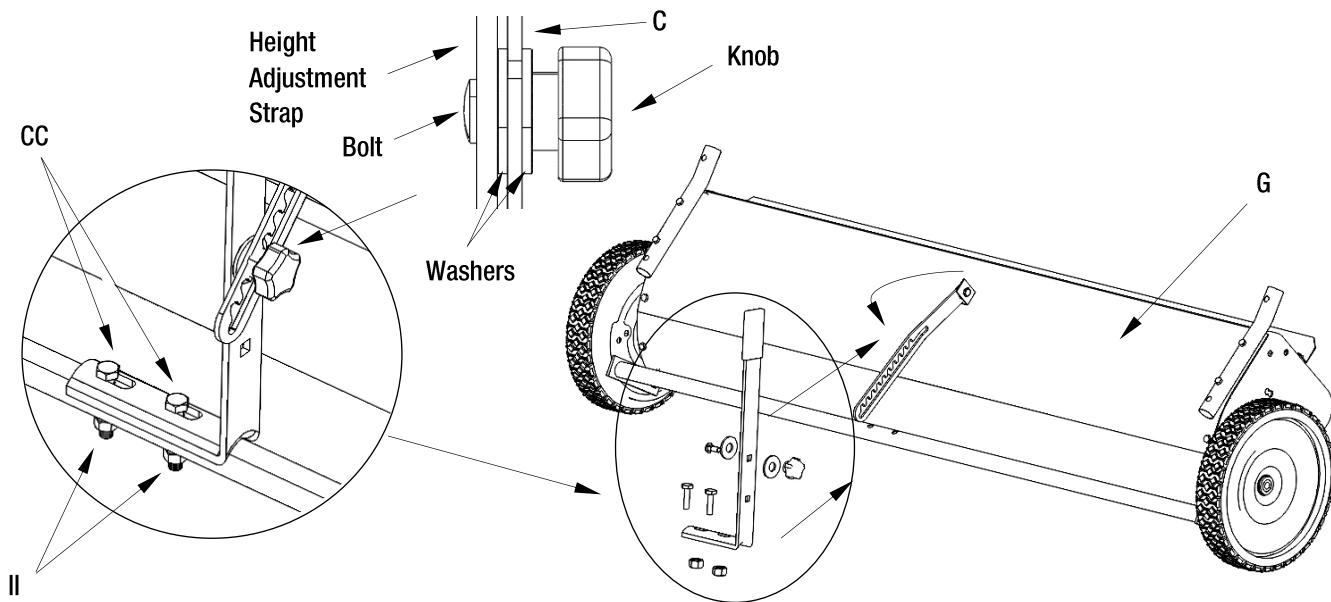
Assembly

1 Hitch Arm Assembly

- Attach the Height Adjustment Handle Assembly (C) to the Sweeper Housing Assembly (G) as shown.



NOTE: All reference to Right (RH) and Left (LH) directions are in reference to position behind the sweeper.

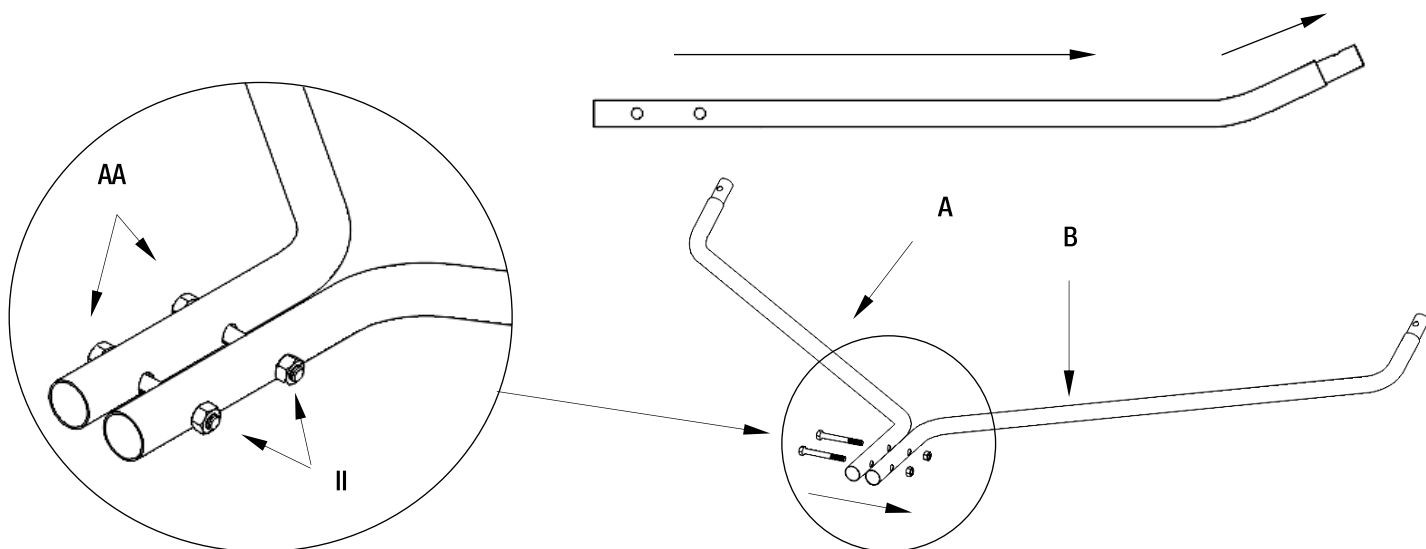


2 Hitch Arm Assembly (continued)

- Attach the Hitch Arms (A and B) together as shown.
- Orient the Hitch Arms (A and B) so both ends are pointed upward as shown.



NOTE: Keep bolts loose until the Hitch Arm Assembly is attached to the Sweeper Housing Assembly.



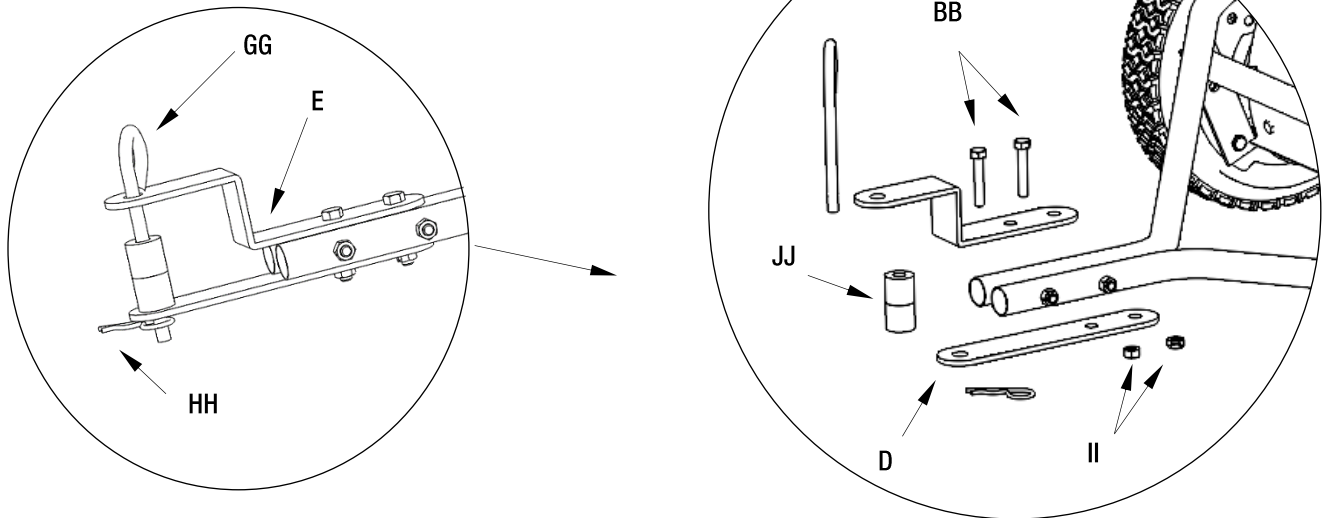
Assembly (continued)

3 Hitch Arm Assembly (continued)

- Attach the Clevis Assembly to the Hitch Arms (A and B) as shown.

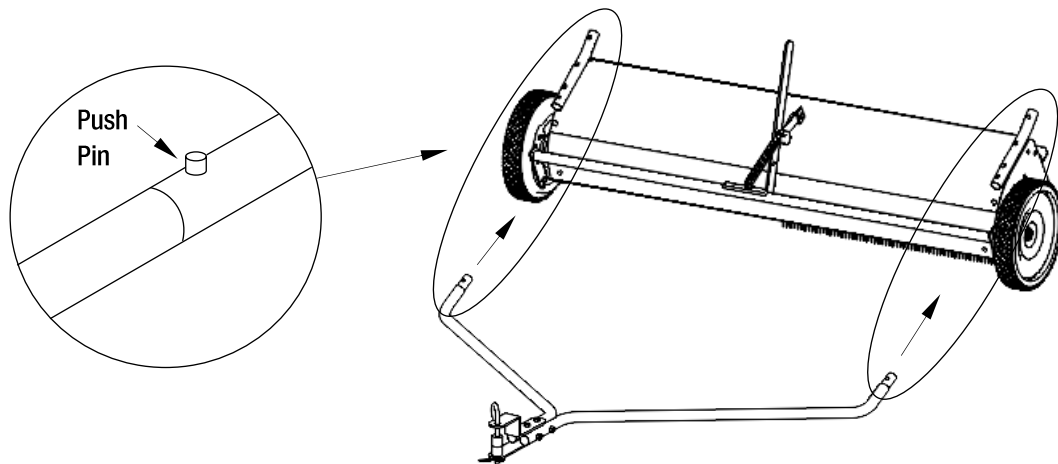


NOTE: Keep bolts loose until the Hitch Arm Assembly is attached to Sweeper Housing Assembly.



4 Hitch Arm Assembly (continued)

- Attach the Hitch Arm Assembly to the Sweeper Housing Assembly (G) as shown. Press the Push Pins and make sure they click into place. Tighten bolts on the Hitch Arms (A and B) and Clevis Assembly.



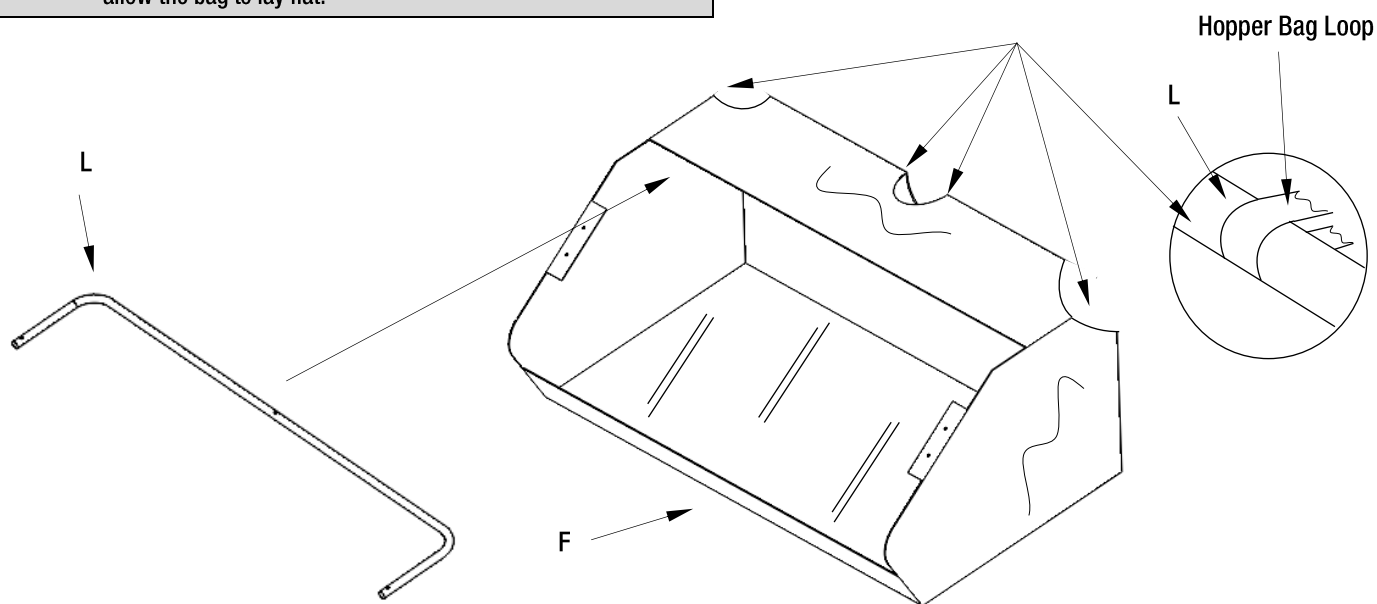
Installation (continued)

5 Hopper Assembly

- Insert the Rear Hopper Tube (L) through the loops in the Hopper Bag (F) as shown.

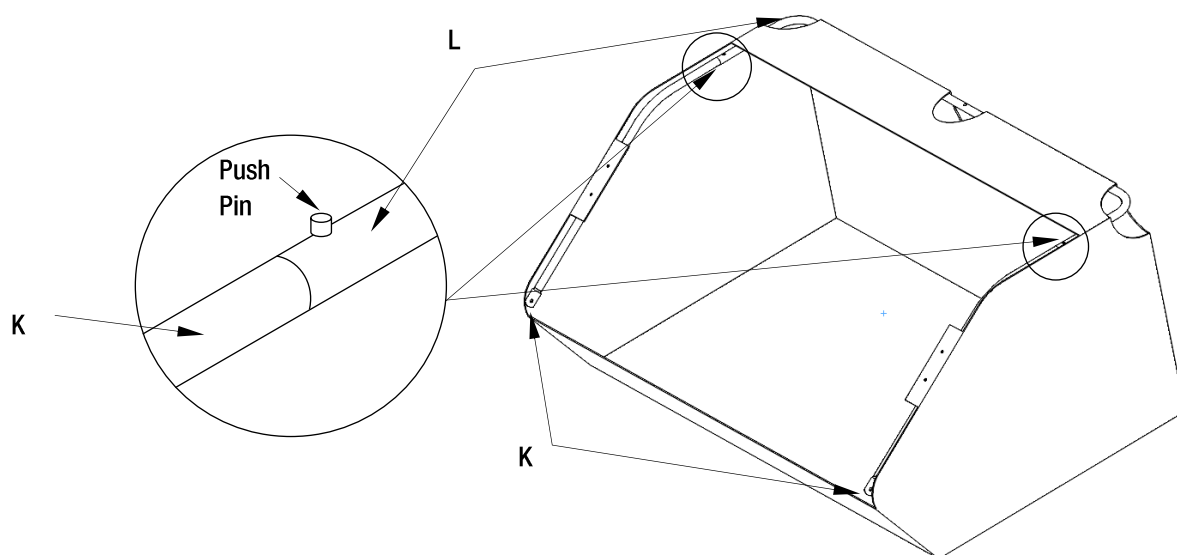


NOTE: IMPORTANT ASSEMBLY TIP: Roll out bag until flat. Roll up bag in opposite direction of how it was originally rolled. This will allow the bag to lay flat.



6 Hopper Assembly (continued)

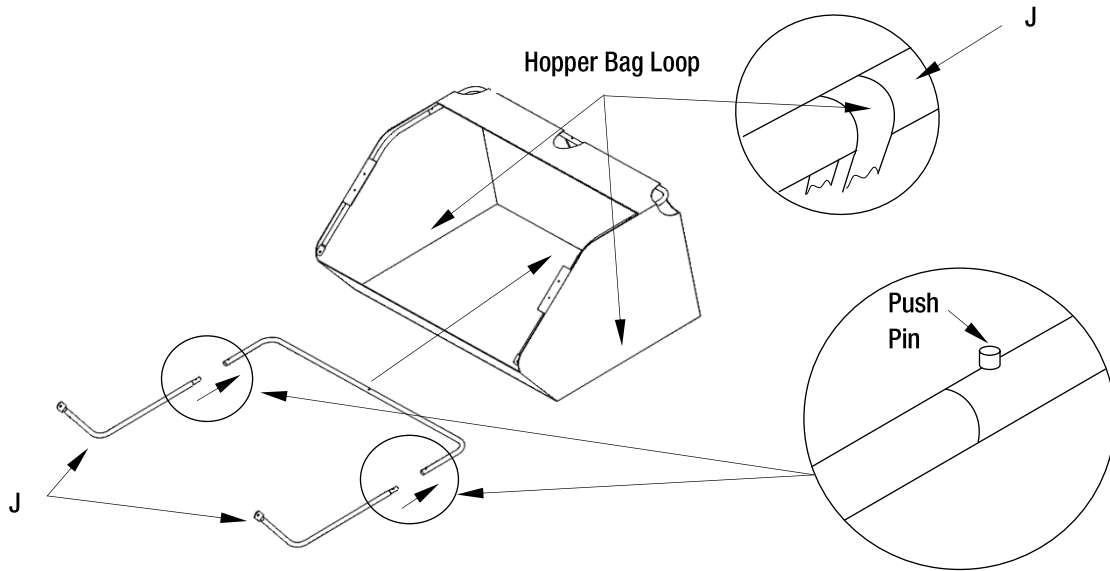
- Attach the Upper Hopper Side Tubes (K) to the Rear Hopper Tube (L) as shown. Press the Push Pins in and make sure they click into place. Undo the Velcro and wrap around the Upper Hopper Side Tubes (K).



Installation (continued)

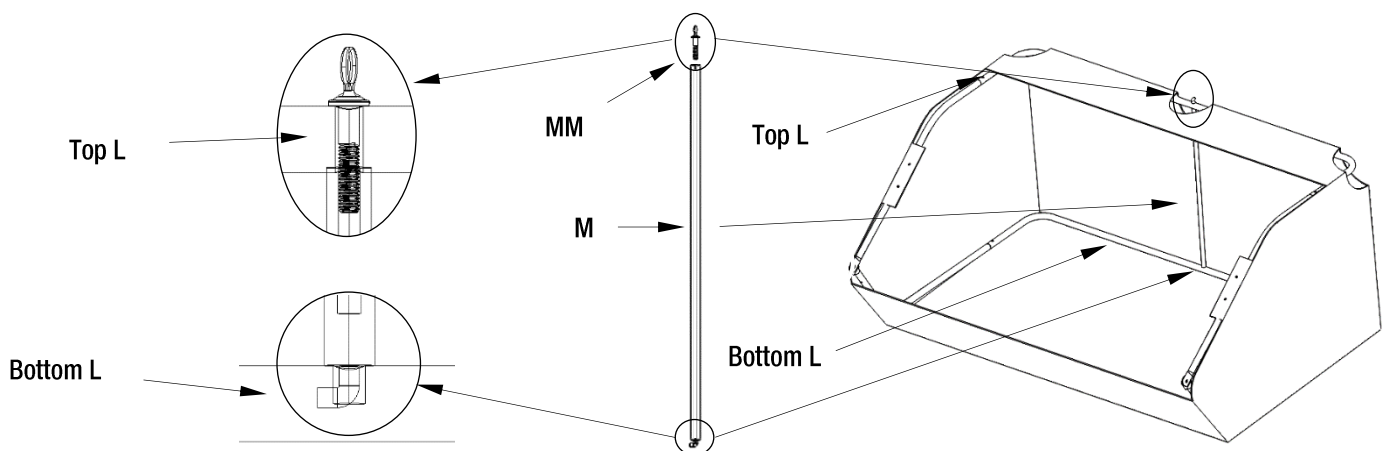
7 Hopper Assembly (continued)

- Place the Rear Hopper Tube (L) into the bottom rear of the Hopper Bag (F). Insert the Lower Hopper Side Tube (J) through the left bag loop then insert into Rear Hopper Tube (L). Press the Push Pins in and make sure they click into place. Insert the Lower Hopper Side Tube (J) through the right bag loop then insert into Rear Hopper Tube (L). Press the Push Pins in and make sure they click into place.



8 Hopper Assembly (continued)

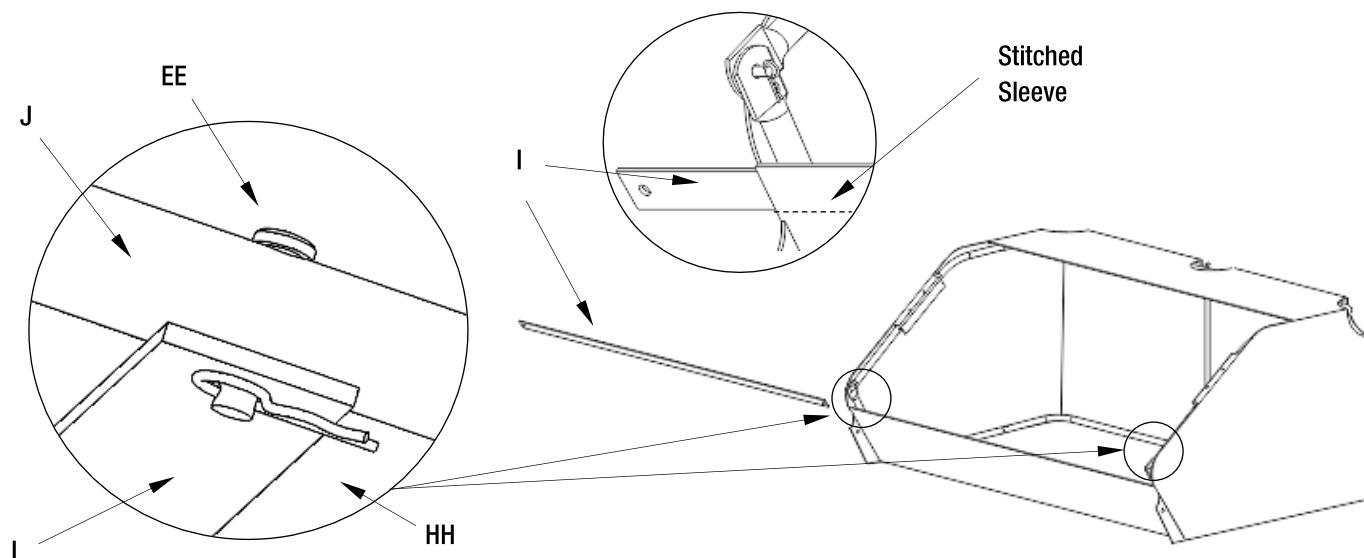
- Using the hook end of the Hopper Support Rod (M), hook inside the hole on the bottom Rear Hopper Tube (L) to raise the back of the Hopper Bag (F) and line up the threaded end of the Hopper Support Rod (M) with the top Rear Hopper Tube (L) hole and secure with the Thumb Screw (MM).



Installation (continued)

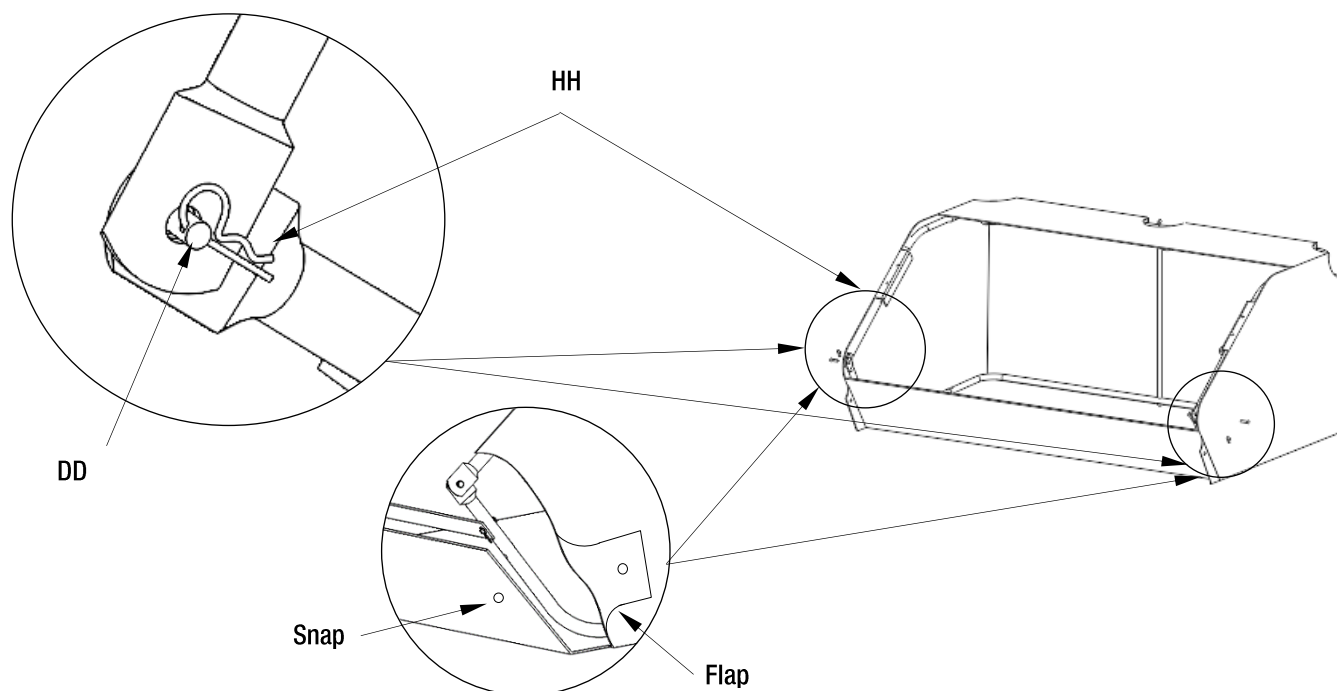
9 Hopper Assembly (continued)

- Insert the Bag Frame Strap (I) into the stitched sleeve along the front edge of the Hopper Bag (F). Secure to the Lower Hopper Side Tubes (J) with the Clevis Pin (EE) and the Hitch Pin (HH) as shown.



10 Hopper Assembly (continued)

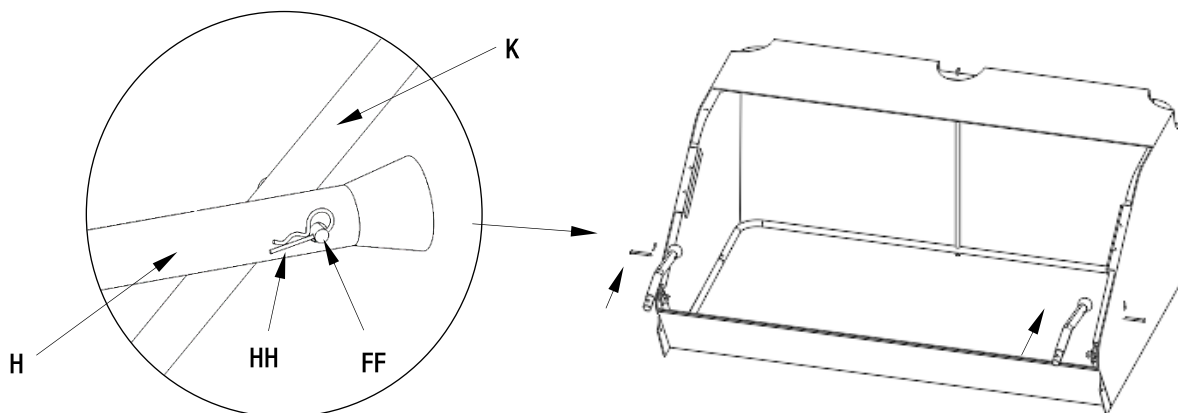
- Secure the Lower Hopper Side Tube (J) to the Upper Hopper Side Tube (K) using the Clevis Pin (DD) and the Hitch Pin (HH). Fasten the Flap to the Snap as shown.



Installation (continued)

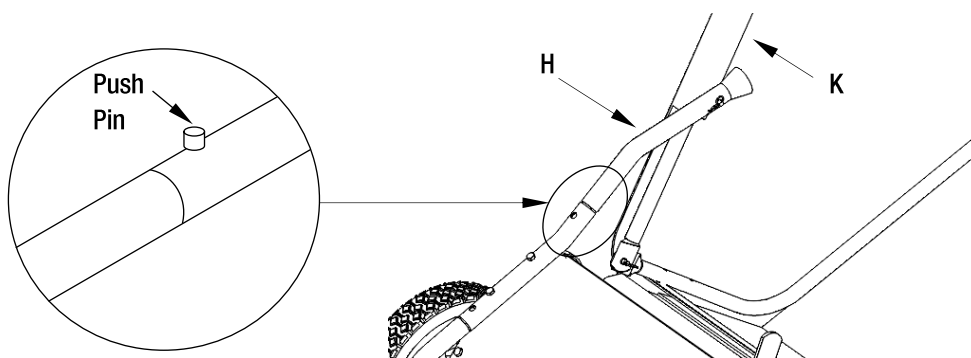
11 Hopper Assembly (continued)

- Attach the Bag Arm Tubes (H) to the Hopper Bag Assembly using the bottom hole as shown.



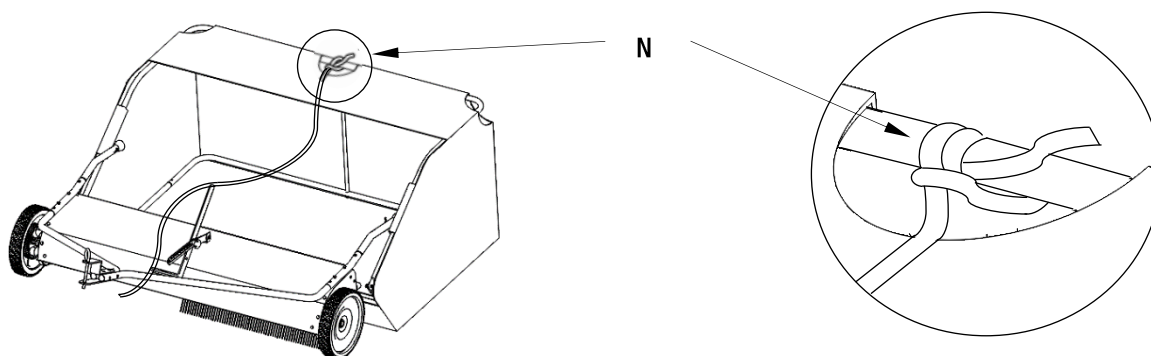
12 Hopper Assembly (continued)

- Attach the Hopper Bag Assembly to the Sweeper Housing Assembly (G) as shown. Press the Push Pins in and make sure they click into place.



13 Hopper Assembly (continued)

- Secure the Rope (N) to the top center of the Hopper Bag Assembly by going over the top of the Hopper Bag (G) with the Rope (N).



Operation

1 Dumping

- Simply pull the Hopper Dump Rope forward to empty debris. Slowly ease the Hopper Dump Rope back, keeping even pressure, until the Hopper returns down.



CAUTION: Do not allow the Hopper Dump Rope to have too much slack when operating. The rope can get caught in the brushes, causing injury.

2 Sweeping Speed

- For the best results, rider/tractor should travel between the 3 to 4 miles per hour range.

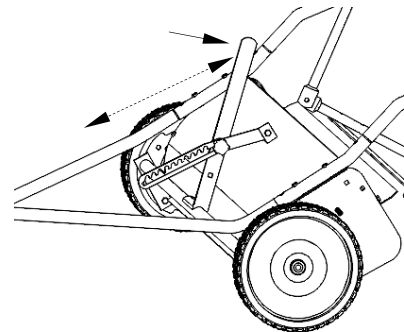
3 Brush Adjustment

- To raise the brushes further away from the ground, push the Height Adjustment Handle back and pull down until desired sweeping height is attained.
- To lower, push the Height Adjustment Handle back and pull up to desired sweeping height.



NOTE: Always mow the grass to an even height before sweeping.

Height Adjustment Handle



Troubleshooting

Issue	Cause	Solution
The wheels skid when sweeping.	The brushes set too low.	Adjust the height until the brushes are ½ in. down into the grass.
The wheels skid when sweeping.	The brushes are jammed.	Stop the sweeper and remove obstruction.
The wheels skid when sweeping.	The wheels are jammed.	Check for obstruction or damage to the wheels.

Maintenance

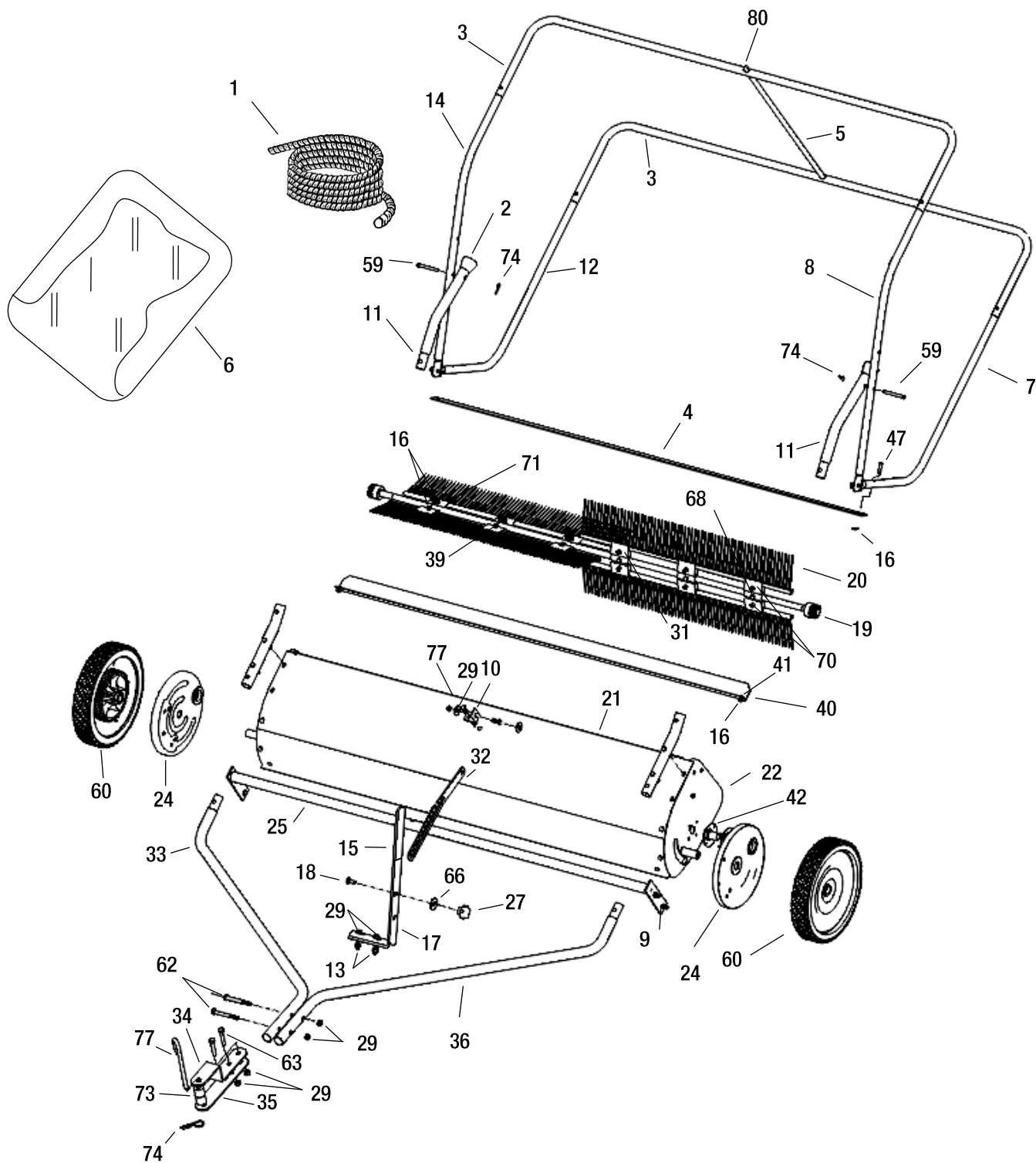
- **Lubrication:** Apply a light multipurpose grease to wheel bearing. Lubricate at the beginning of each season or more often as conditions dictate.
- **Brush Replacement:** Remove Hex Head Bolts holding on the Brush Clamps. Place Brush Strips in slots of Brush Disc so shorter supporting bristles are away from brush sweeping rotation. Place the Brush Clamp against the brushes and tightly secure with the 1/4" x 1/2" Hex Head Bolts into the nut on the Brush Axle.

Storage

- For long term storage, you can remove the Tube Frame Assembly (both RH and LH Side Frame and Top Frame Tube) and the Support Rods on the Hopper Assembly to reduce total storage area.

Service Parts

48" LAWN SWEEPER



Service Parts (continued)

48" LAWN SWEEPER (NOT ALL PARTS SHOWN)

Part	Description	Quantity
1	Hopper Rope	1
2	Vinyl Cap	2
3	Hopper Frame Tube (Rear)	2
4	Bag Frame Strap	1
5	Hopper Support Rod	1
6	Hopper Bag	1
7	Lower Hopper Side Tube (L.H.)	1
8	Upper Hopper Side Tube (L.H.)	1
9	M8x16 Hex Head Bolt	5
10	Angle Bracket	1
11	Bag Arm Tube	2
12	Lower Hopper Side Tube (R.H.)	1
13	M8x38 Hex Head Bolt	2
14	Upper Hopper Side Tube (R.H.)	1
15	Height Adjustment Grip	1
16	M6 Nylock Nut	24
17	Height Adjustment Handle	1
18	M8x30 Carriage Bolt	1
19	Brush Shaft	1
20	Brush	4
21	Wrapper	1
22	End Plate (R.H.)	1
23	Pinion Gear (R.H.)	1
24	Dust Cover Assembly	2
25	Height Adjustment Tube Assembly	1
26	Clevis Pin Ø6x30	2
27	Knob Plastic	1
28	Washer Ø10 MM	2
29	M8 Lock Nut	6
30	Slotted Pan Head Screw M5x12	14
31	Retainer Brush	6
32	Height Adjustment Strap	1
33	Hitch Tube (R.H.)	1
34	Clevis Plate	1
35	Clevis Plate (Straight)	1
36	Hitch Tube (L.H.)	1
37	Big Flat Washer Ø10 MM	4
38	M10x85 Hex Head Bolt	2
39	M5 Nylock Nut	20
40	Connecting Bar	1

Part	Description	Quantity
41	M6x12 Hex Head Bolt	2
42	Dust Cover Retainer	2
43	Inside Star Washer	2
44	Brush Shaft Bushing	2
45	Spacer Bushing	2
46	Spacer for Axle	2
47	Clevis Pin Ø6x30	2
48	Star Washer 05	6
49	Clevis Pin Ø8 x 15	2
50	End Plate (L.H.)	1
51	Special Washer	2
52	Bushing	2
53	Retaining Ring 015	4
54	Adj. Washer A	4
55	Adj. Washer C	2
56	Dowel Pin (Drive)	2
57	Pinion Gear (L.H.)	1
58	Adj. Washer B	2
59	Clevis Pin Ø8x48	2
60	Wheel & Tire Assembly	2
61	Wheel Bushing	4
62	M8x65 Hex Head Bolt	2
63	M8x47 Hex Head Bolt	2
64	Hub Cap	2
65	M6x35 Hex Head Bolt	4
66	Spacer Bushing	1
67	M10 Nylock Nut	2
68	M5x25 Hex Head Bolt	6
69	Big Flat Washer 08	1
70	M6x20 Hex Head Bolt	12
71	Retainer Brush	12
72	Hitch Pin	1
73	Hitch Spacer	2
74	Hitch Pin Clip 03	7
75	Tube Plugs	2
76	Big Flat Washer 10 MM	2
77	M8x20 Hex Head Bolt	1
78	Clevis Pin Ø8x25	2
79	M6x40 Allen Head Bolt	4
80	Thumb Screw	1

Warranty

12 MONTH LIMITED WARRANTY FOR ACCESSORIES

WHAT IS COVERED

The limited warranty set forth below is given by Precision Products, Incorporated with respect to new merchandise purchased and used in the United States, its possessions and territories and Canada.

The manufacturer warrants the product(s) listed against defects in material and workmanship, and will at our option, repair or replace, free of charge, any part found to be defective in materials or workmanship. This limited warranty shall only apply if this product has been assembled, operated, and maintained in accordance with the owner's manual furnished with the product, and has not been subject to misuse, abuse, neglect, accident, improper maintenance, alteration, vandalism, theft, fire, water, or damage because of other peril or natural disaster.

Normal wear parts or components thereof are subject to separate terms as follows: All normal wear parts or component failures will be covered on the product for a period of one year. Parts found to be defective within the warranty period will be replaced at our expense. Our obligation under this warranty is expressly limited to the replacement or repair, at our option, of parts found to be defective in material and workmanship.

WHAT IS NOT COVERED

This limited warranty does not provide coverage in the following cases:

1. Routine maintenance items such as lubricants and filters.
2. Normal deterioration of the exterior finish due to use or exposure.
3. Transportation and/or labor charges.

No implied warranty, including any implied warranty of merchantability or fitness for a particular purpose, applies after the Product Warranty Period set forth below. No other expressed warranty, whether written or oral, except as mentioned above, given by any person or entity, including a dealer or retailer, with respect to any product, shall be binding on Precision Products, Incorporated. The exclusive remedy is repair or replacement of the product as set forth above. The provisions as set forth in this warranty provide the sole and exclusive remedy arising from the purchase.

The manufacturer will not be liable for incidental or consequential loss or damage including, without limitation, expenses incurred for substitute or replacement lawn care services, or for rental expenses to temporarily replace a warranted product.

Some states and/or provinces do not allow the exclusion or limitation of incidental or consequential damages, or limitations on how long an implied warranty lasts, so the above exclusions or limitations may not apply to you.

During the warranty period, the exclusive remedy is replacement of the part. In no event shall recovery of any kind be greater than the amount of the purchase price of the product sold. Alteration of safety features of the product shall void this warranty. You assume the risk and liability for loss, damage, or injury to you and your property and/or to others and their property arising out of the misuse or inability to use this product.

This limited warranty shall not extend to anyone other than the original purchaser or to the person for whom it was purchased as a gift.

Warranty Application

This limited warranty gives you specific legal rights, and you may also have other rights which vary from state to state and/or province to province.

Warranty Period

The warranty period stated below begins with the date appearing on the Proof of Purchase. Without the proof of purchase, the warranty period begins from the manufacturing date, determined by the date code on the box.

Contact the Customer Service Team at 1-800-225-5891