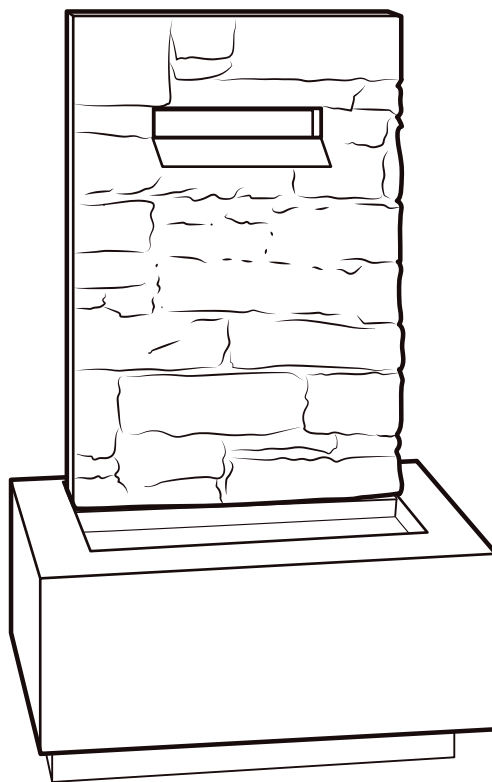


CANVAS^{TM/MC}

CASCADE ROCK WALL FOUNTAIN WITH LIGHTS

PRODUCT NO. 059-1370-4



ASSEMBLY INSTRUCTIONS



HAVING TROUBLE?

TOLL-FREE:

1-888-670-6684

IMPORTANT: Please read this manual carefully
before beginning assembly of this product.
Keep this manual for future reference.

CANVAS™

INSPIRED BY CANADA



We believe in the power of décor and its ability to make up the fabric of your home.

That's why **CANVAS®** collections draw **inspiration from Canadians and the way they live.**

From on-trend furniture pieces to holiday décor and all your outdoor living essentials, **CANVAS®** makes it easy to refresh your space to reflect **your unique style and the way you live every day.**

We would love to hear from you and welcome your thoughtful feedback. Visit our website at **canadiantire.ca** to tell us about your experience, and share your photos with us using **#mycanvasstyle.**

Show us how you bring **CANVAS®** products to life. We can't wait to see!

TABLE OF CONTENTS

Parts List.....	4
Step-by-step Guide.....	5
Troubleshooting.....	6
Caring for Your Item.....	7
Warranty.....	7

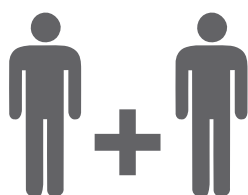


WARNING! TO REDUCE THE RISK OF SERIOUS INJURY, READ THE FOLLOWING SAFETY INSTRUCTIONS BEFORE ASSEMBLING AND USING THE PRODUCT.

- To reduce the risk of electrical shock, use pump only on self-contained fountains no larger than 5 feet (1.5 m) in any dimension. This pump is supplied with a grounding conductor and grounding type plug.
- To reduce the risk of electric shock, be certain that it is connected to a properly grounded, grounding type receptacle. Always disconnect power supply before handling or moving fountain. Connect only to a grounded outdoor power outlet of 120 V- 60 Hz.
- Do not attempt to repair a damaged pump/power cord. Ask for a replacement pump/cord from the manufacturer. To avoid possible injuries do not tamper with pump/cord assembly. Must be used only with the pump AND/OR transformer AND/OR adaptor provided. Be careful not to spill water onto the plug of the pump. **DO NOT allow the pump to run dry!**



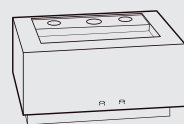
IMPORTANT: RETAIN FOR FUTURE REFERENCE, AND READ CAREFULLY

TOOLS REQUIRED



2 people

PARTS LIST

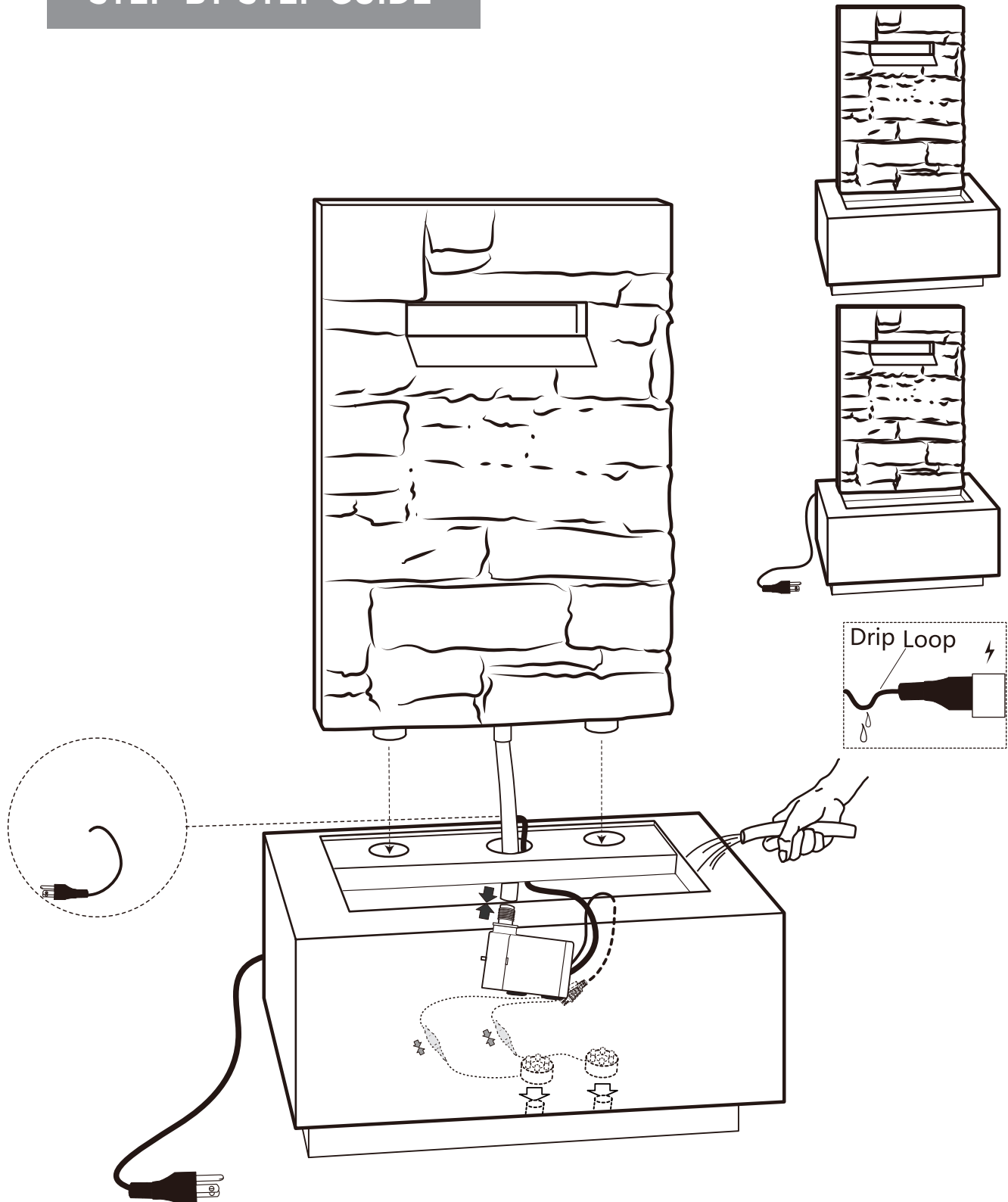
ITEM	DESCRIPTION	THUMBNAIL	QUANTITY
1	Pump and LED lights		1
2	Wall		1
3	Base		1

- Excessive weight or pressure on any of the fountain sections may cause it to tip or fall over. Keep pets and children away from any of the fountain sections. Do not place any items, such as potted plants, on the edge or on top of the fountain.
- If the entire fountain falls into the water accidentally, turn off the circuit breaker immediately before removing from water.
- Do not operate the fountain if the pump has been dropped or has a damaged power cord or plug.
- If the plug or your wall receptacle gets wet due to water dripping down the power cord or for any other reason, do not remove the plug from the wall outlet until the circuit breaker is turned off.
- NOTE: Allow the pump power cord to hang at a lower level than the wall outlet to form a “drip loop.” This will help prevent water from dripping down the power cord and getting into the wall outlet.
- Periodically change the water. Clean the fountain water basin, the pump’s outlet nozzle and the water tube with a damp cloth to remove dirt and debris.
- Keep the power cord away from high temperatures or heat sources.
- Use only a CUL or CSA or CETL approved extension cord of the correct rating to avoid overheating.
- Do not use attachments, which are not provided by the manufacturer, since they may cause an unsafe condition.
- This fountain pump is not intended for commercial use.

IMPORTANT: Please read and understand this manual before any assembly. Before beginning assembly of product, make sure all parts are present. Compare parts with packaging contents list. If any part is missing, or if you have any questions, contact the service centre at 1-888-670-6684 (toll free).

Place all parts from the box in a cleared area and position them on the floor in front of you. Remove all packing materials and place them back into the box. Do not dispose of the packing materials until assembly is complete. Read each step carefully before beginning any assembly and make sure you understand each step. If you are missing a part, please call our toll-free number for assistance 1-888-670-6684.

STEP-BY-STEP GUIDE



CAUTION!

Proper placement of your fountain is essential.

Do not place the product underneath electrical lines.

Keep children away during assembly.

This product contains small parts which can be swallowed by children.

Keep fingers away from the places where they can be pinched or trapped.

Do not attempt to assemble the fountain if any parts are missing.

STEP-BY-STEP GUIDE

Place base on a clean level area outdoors.

Do not place on or near surfaces that may be damaged by water.

Fountain needs to be located near a GFCI (Ground Fault Circuit Interrupter) outdoor electrical outlet.

To prevent back injuries, please ask for assistance when lifting.

1. Put the basin on a clean flat surface that cannot be damaged by water.
2. Put the pump into the basin then run the wire out through the center back hole and lay the wire in the centre. There is a groove in the top so the wire will not get pinched.
3. Mount the fountain wall section to the basin, make sure the hose goes through the center hole. Connect the hose to the top of the pump. (Put the Wall gently into place by pushing down or back and forth on the corners until it sets fully down with no gap under the wall).
4. Fill the basin with clean water.
5. Plug into a properly grounded outlet.
6. Test run and adjust the water flow by twisting the tab located on the front of the pump to get the desired effect.

TROUBLESHOOTING



**BEFORE RETURNING
YOUR PRODUCT**

**HAVING TROUBLE?
LET US HELP YOU!**

**TOLL-FREE:
1-888-670-6684**



**CALL US,
WE CAN HELP**

If you have questions regarding your product or require warranty assistance, please call our customer service helpline.

- If water does not flow out of unit, disconnect the power supply and verify that there are no kinks in the hose. Shake the pump a little while underwater to remove any trapped air in the unit.
- Remove any visible debris.
- Make sure there is enough water in the fountain. Fill to a level of 1-2" (2.5-5 cm) below the rim of the base (Fountain - Lower Section).
- Connect and disconnect the power a few times. The pump should function.
- Wait a while in order to allow the water to circulate properly.

CARING FOR YOUR ITEM

- Keep the water clean at all times.
- Remove all forms of debris.
- Never run the pump dry.
- Verify water level frequently to compensate for evaporation during the summer. Fill to a level of 1-2" (2.5-5cm) below the rim of the base (Fountain – Lower section).
- Not for operation below 50°F (10°C). All water must be removed from the unit in freezing conditions.
- This fountain is for outdoor decorative use only.
- This fountain is designed to function with water only.
- Never leave a running fountain unattended.
- The water in the fountain is not safe to drink.
- Keep away from small children and pets.
- Change the water regularly to prevent mosquitoes from breeding.
- INSTRUCTION FOR STORAGE: THE FOUNTAIN MUST BE STORED INDOORS DURING WINTER OR WHEN TEMPERATURE IS BELOW 50°F (10°C)
- During Winter, this fountain must be stored indoors. Please follow the following steps:
- Disconnect power supply
- Carefully empty fountain of all water
- Store indoors on water resistant surface

IN ORDER TO PRESERVE THE BEAUTY AND THE LIFE OF THIS ITEM, IT IS HIGHLY RECOMMENDED TO COVER WITH A CANVAS TYPE WATERPROOF MATERIAL OR STORE IN A COVERED AREA FOR THE WINTER.

WARNING:

1. To reduce the risk of electric shock, connect only to a properly grounded, grounding-type receptacle.
2. To reduce the risk of electric shock, install only on a circuit protected by a ground fault circuit-interrupter (GFCI).
3. Risk of electric shock. This pump has not been investigated for use in swimming pool or marine areas.
4. DO NOT RUN DRY.

CAUTION:

This pump has been evaluated for use with water only.

WARRANTY INFORMATION



1-YEAR LIMITED WARRANTY*

This CANVAS™ product carries a one (1) year warranty against defects in workmanship and materials. Trileaf Distribution agrees to replace the defective product free of charge within the stated warranty period, when returned by the original purchaser with proof of purchase. This product is not guaranteed against wear or breakage due to misuse and/or abuse.

PRODUCT NO. 059-1370-4

Made in China

Imported by Trileaf Distribution Trifeuil Toronto, Canada M4S 2B8

CANVAS™

INSPIRED BY CANADA

