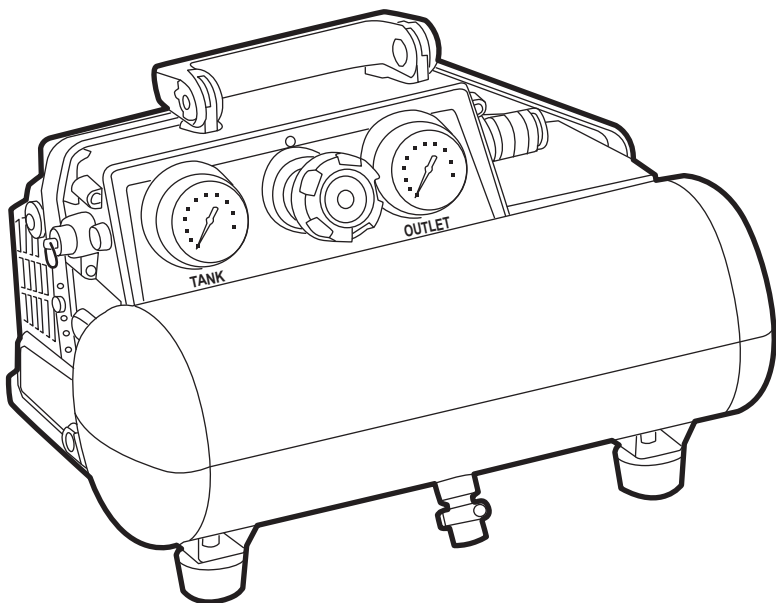


MASTERCRAFT™/MC

20 V MAX* AIR COMPRESSOR

058-9863-6



IMPORTANT:

Read and understand this instruction manual thoroughly before using the product.

INSTRUCTION MANUAL

TABLE OF CONTENTS

Technical Specifications	4
Safety Guidelines	5
Key Parts Diagram	11
Operating Instructions	12
Maintenance	16
Troubleshooting	17
Exploded View	18
Parts List	19
Warranty	20

NOTE:


If any parts are missing or damaged, or if you have any questions, please call our toll-free helpline at 1-800-689-9928.



SAVE THESE INSTRUCTIONS

- This manual contains important safety and operating instructions. Read all instructions and follow them with use of this product.

TECHNICAL SPECIFICATIONS

Voltage	20 V 
Air Tank Capacity	1 gal. (3.8 L)
Max Pressure	120 psi
Air Delivery	0.75 SCFM @ 40 psi 0.5 SCFM @ 90 psi

*Maximum battery voltage without workload; with workload nominal voltage is 18 V.

SAFETY GUIDELINES:



WARNING!

Safety symbols in this Instruction Manual are used to flag possible dangers. The safety symbols and their explanations require your full understanding. The safety warnings do not, by themselves, eliminate any danger, nor are they substitutes for proper accident prevention measures.



WARNING!

This Safety Alert Symbol indicates caution, warning, or danger. Failure to obey a safety warning can result in serious injury to yourself or others. To reduce the risk of injury, fire, or electric shock, always follow the safety precautions.

KNOW YOUR TOOL

To operate this tool, carefully read this Instruction Manual and all labels affixed to the air compressor before using. Keep this instruction manual available for future reference.

IMPORTANT

This tool should only be serviced by a qualified service technician. For more information, call the toll free helpline at 1-800-689-9928.

READ ALL INSTRUCTIONS THOROUGHLY.

SAVE THESE INSTRUCTIONS.

GENERAL POWER TOOL SAFETY WARNINGS



WARNING!

Read all safety warnings, instructions, illustrations and specifications provided with this power tool. Failure to follow all instructions listed below may result in electric shock, fire and/or serious injury.

SAVE ALL WARNINGS AND INSTRUCTIONS FOR FUTURE REFERENCE.

The term “power tool” in the warnings refers to your mains-operated (corded) power tool or battery-operated (cordless) power tool.

WORK AREA SAFETY

- **Keep work area clean and well lit.** Cluttered or dark areas invite accidents.
- **Do not operate power tools in explosive atmospheres, such as in the presence of flammable liquids, gases or dust.** Power tools create sparks which may ignite the dust or fumes.
- **Keep children and bystanders away while operating a power tool.** Distractions can cause you to lose control.

ELECTRICAL SAFETY

- **Power tool plugs must match the outlet. Never modify the plug in any way. Do not use any adapter plugs with earthed (grounded) power tools.** Unmodified plugs and matching outlets will reduce risk of electric shock.
- **Avoid body contact with earthed or grounded surfaces, such as pipes, radiators, ranges and refrigerators.** There is an increased risk of electric shock if your body is earthed or grounded.
- **Do not expose power tools to rain or wet conditions.** Water entering a power tool will increase the risk of electric shock.
- **Do not abuse the cord. Never use the cord for carrying, pulling or unplugging the power tool. Keep cord away from heat, oil, sharp edges or moving parts.** Damaged or entangled cords increase the risk of electric shock.
- **When operating a power tool outdoors, use an extension cord suitable for outdoor use.** Use of a cord suitable for outdoor use reduces the risk of electric shock.
- **If operating a power tool in a damp location is unavoidable, use a ground fault circuit interrupter (GFCI) protected supply.** Use of a GFCI reduces the risk of electric shock.

PERSONAL SAFETY

- **Stay alert, watch what you are doing and use common sense when operating a power tool. Do not use a power tool while you are tired or under the influence of drugs, alcohol or medication.** A moment of inattention while operating power tools may result in serious personal injury.
- **Use personal protective equipment. Always wear eye protection.** Protective equipment such as a dust mask, non-skid safety shoes, hard hat or hearing protection used for appropriate conditions will reduce personal injuries.
- **Prevent unintentional starting. Ensure the switch is in the off position before connecting to power source and/or battery pack, picking up or carrying the tool.** Carrying power tools with your finger on the switch or energizing power tools that have the switch on invites accidents.
- **Remove any adjusting key or wrench before turning the power tool on.** A wrench or a key left attached to a rotating part of the power tool may result in personal injury.
- **Do not overreach. Keep proper footing and balance at all times.** This enables better control of the power tool in unexpected situations.
- **Dress properly. Do not wear loose clothing or jewellery. Keep your hair and clothing away from moving parts.** Loose clothes, jewellery or long hair can be caught in moving parts.
- **If devices are provided for the connection of dust extraction and collection facilities, ensure these are connected and properly used.** Use of dust collection can reduce dust-related hazards.
- **Do not let familiarity gained from frequent use of tools allow you to become complacent and ignore tool safety principles.** A careless action can cause severe injury within a fraction of a second.

POWER TOOL USE AND CARE

- **Do not force the power tool. Use the correct power tool for your application.** The correct power tool will do the job better and safer at the rate for which it was designed.
- **Do not use the power tool if the switch does not turn it on and off.** Any power tool that cannot be controlled with the switch is dangerous and must be repaired.
- **Disconnect the battery pack from the power tool before making any adjustments, changing accessories, or storing power tools.** Such preventive safety measures reduce the risk of starting the power tool accidentally.
- **Store idle power tools out of the reach of children and do not allow persons unfamiliar with the power tool or these instructions to operate the power tool.** Power tools are dangerous in the hands of untrained users.
- **Maintain power tools and accessories. Check for misalignment or binding of moving parts, breakage of parts and any other condition that may affect the power tool's operation. If damaged, have the power tool repaired before use.** Many accidents are caused by poorly maintained power tools.
- **Keep cutting tools sharp and clean.** Properly maintained cutting tools with sharp cutting edges are less likely to bind and are easier to control.
- **Use the power tool, accessories and tool bits, etc., in accordance with these instructions, taking into account the working conditions and the work to be performed.** Use of the power tool for operations different from those intended could result in a hazardous situation.
- **Keep handles and grasping surfaces dry, clean and free from oil and grease.** Slippery handles and grasping surfaces do not allow for safe handling and control of the tool in unexpected situations.

BATTERY TOOL USE AND CARE

- **Recharge only with the charger specified by the manufacturer.** A charger that is suitable for one type of battery pack may create a risk of fire when used with another battery pack.
- **Use power tools only with specifically designated battery packs.** Use of any other battery packs may create a risk of injury and fire.
- **When battery pack is not in use, keep it away from other metal objects, like paper clips, coins, keys, nails, screws or other small metal objects, that can make a connection from one terminal to another.** Shorting the battery terminals together may cause burns or a fire.
- **Under abusive conditions, liquid may be ejected from the battery; avoid contact. If contact accidentally occurs, flush with water. If liquid contacts eyes, additionally seek medical help.** Liquid ejected from the battery may cause irritation or burns.
- **Do not use a battery pack or tool that is damaged or modified.** Damaged or modified batteries may exhibit unpredictable behaviour resulting in fire, explosion or risk of injury.
- **Do not expose a battery pack or tool to fire or excessive temperature.** Exposure to fire or temperature above 265°F (130°C) may cause explosion.

- **Follow all charging instructions and do not charge the battery pack or tool outside the temperature range specified in the instructions.** Charging improperly or at temperatures outside the specified range may damage the battery and increase the risk of fire.

SERVICE

- **Have your power tool serviced by a qualified repair person using only identical replacement parts.** This will ensure that the safety of the power tool is maintained.
- **Never service damaged battery packs.** Service of battery packs should only be performed by the manufacturer or authorized service providers.

SPECIFIC SAFETY RULES

- **Do not exceed the pressure rating of any component in the system.**
- **Protect material lines and air lines from damage or puncture.** Keep hose away from sharp objects, chemical spills, oil, solvents, and wet floors.
- **Check hoses for weak or worn condition before each use, making certain all connections are secure.** Do not use if defect is found. Purchase a new hose or notify an authorized service centre for examination or repair.
- **Do not attempt to pull or carry the air compressor by the hose.**
- **Make sure the hose is free of obstructions or snags.** Entangled or snarled hoses can cause loss of balance or footing and may become damaged.
- **Do not continue to use a tool or hose that leaks air or does not function properly.**
- **Never leave a tool unattended with the air hose attached.**
- **Release all pressures within the system slowly.** Dust and debris may be harmful.
- **Drain tanks of moisture after each day's use.** If unit will not be used for a while, it is best to leave drain valve open until such time as it is to be used. This will allow moisture to completely drain out and help prevent corrosion on the inside of tanks.
- **Risk of Fire or Explosion.** When used in conjunction with a dedicated spray system, do not spray flammable liquid in a confined area. Spray area must be well ventilated. Do not smoke while spraying or spray where spark or flame is present. Keep compressors as far from the spraying area as possible, at least 25' (7.62 m) from the spraying area and all explosive vapors.
- **Risk of Bursting.** Do not adjust regulator to result in output pressure greater than marked maximum pressure of attachment. Do not use at pressure greater than 120 psi.
- **Inspect tanks yearly for rust, pin holes, or other imperfections that could cause it to become unsafe.** Never weld or drill holes in the air tanks.
- **Do not operate this air compressor if it does not contain a legible warning label.**
- **Your tool may require more air consumption than this air compressor is capable of providing.**
- **Never direct a jet of compressed air toward people or animals. Take care not to blow dust and dirt towards yourself or others.** Following this rule will reduce the risk of serious injury.

- **Do not use this air compressor to spray chemicals or paint.** Your lungs can be damaged by inhaling toxic fumes. A respirator may be necessary in dusty environments.
- **This equipment incorporates parts such as snap switches, receptacles, and the like that tend to produce arcs or sparks** and therefore, when located in a garage, it should be in a room or enclosure provided for the purpose, or should be 18" (45.7 cm) or more above the floor.
- **Never store a tool with air connected.** Storing the tool with air connected can result in unexpected firing and possible serious personal injury.

ADDITIONAL SAFETY GUIDELINES FOR THE AIR COMPRESSOR

- **The label on your tool may include the following symbols. The symbols and their definitions are as follows:**


V Volts

A Amperes

Hz Hertz

W Watts

min Minutes

 or d.c. Direct current

n_0 No-load speed

.../min or ...min⁻¹ .. Revolutions or reciprocation per minute

psi Pounds per square inch

SCFM Standard cubic feet per minute

gal. Gallon



..... WARNING – To reduce the risk of injury, user must read instruction manual.



..... WARNING – To reduce the risk of injury, always wear eye protection.



..... WARNING – To reduce the risk of injury, always wear ear protection.

**WARNING!**

To reduce the risk of electric shock or damage to the charger and battery, use only the Mastercraft® and PWRPOD™ batteries and chargers listed.

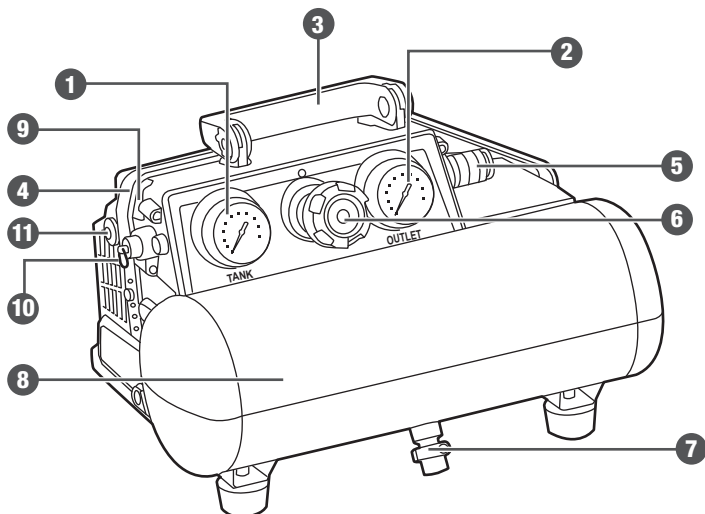
BRAND	BATTERY PACK	CHARGER
Mastercraft®	054-3124-0, 054-7553-4, 054-7557-6, 054-2434-8	054-3126-6, 054-7559-2, 054-8299-4
PWRPOD™	054-7563-0, 054-7564-8, 054-7558-4	054-7565-6, 054-7567-2

- **For best results, your battery and tool should be charged, stored and used in a location where the temperature is more than 41°F (5°C) but less than 104°F (40°C).** Do not store outside or in vehicles.

PACKAGE CONTENTS:

Air compressor

KEY PARTS DIAGRAM



KEY PARTS DIAGRAM

No.	Description
1	Tank Pressure Gauge
2	Outlet Pressure Gauge
3	Handle
4	Rubber Straps
5	Quick Coupler
6	Air Pressure Regulator Knob

No.	Description
7	Drain Valve
8	Tank
9	On/Off Switch
10	Safety Valve
11	Reset Switch



WARNING!

- Remove the air compressor from the package and examine it carefully. Do not discard the carton or any packaging material until all parts have been examined.
- If any part of the air compressor is missing or damaged, do not attach battery pack to the compressor or use the tool until the part has been repaired or replaced. Failure to heed this warning could result in serious injury.
- Do not allow familiarity with the air compressor to cause a lack of alertness. A fraction of a second of carelessness is enough to cause severe injury.

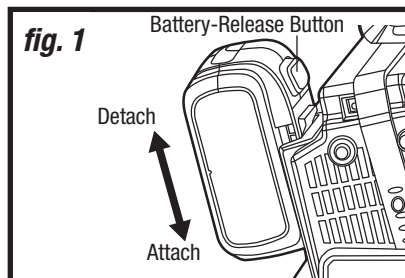
OPERATING INSTRUCTIONS

TO ATTACH THE BATTERY PACK (fig. 1)

1. Make sure that the air compressor is switched off.
2. Align the raised rib on the battery pack with the grooves on the compressor, and then slide the battery pack onto the air compressor.

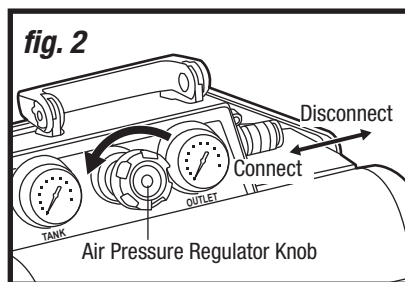
TO DETACH THE BATTERY PACK (fig. 1)

1. Make sure that the air compressor is switched off.
2. Depress the battery-release button located on the front of the battery pack to release the battery pack.
3. Pull the battery pack out and remove it from the air compressor.



TO ATTACH HOSE WITH QUICK COUPLER (fig. 2)

1. Make sure the air compressor is turned off and the battery pack is not installed.
2. Rotate the air pressure regulator knob fully in the counter-clockwise direction so that the outlet pressure is at zero (0) psi.
3. Attach hose with quick coupler. Make sure to push the hose end fully into the coupler until the release sleeve snaps forward to lock it in place.



TO DETACH HOSE FROM QUICK COUPLER (fig. 2)

1. Confirm that the outlet pressure is at zero (0) psi.
2. When disconnecting a hose, always firmly hold release end of hose.
3. Pull back on the release sleeve on the quick coupler and then pull out the hose.



WARNING!

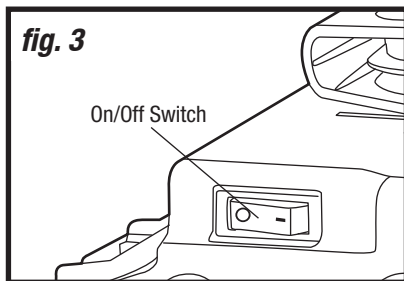
- Never exceed the air tool's pressure rating as recommended by the manufacturer. When using this air compressor as an inflation device, always follow the maximum inflation guidelines stated by the manufacturer of the item being inflated.

BREAK-IN PERIOD

Before first use, install a fully charged battery pack, then run the air compressor at zero tank pressure with the drain valve fully open for 30 minutes or until the battery pack is completely discharged, whichever happens first.

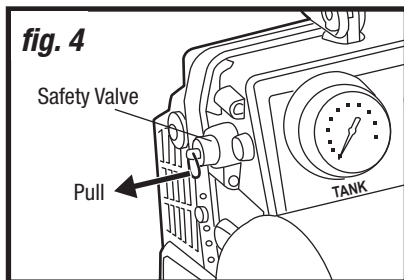
TO TURN THE AIR COMPRESSOR ON/OFF (fig. 3)

1. Install the battery pack.
2. To turn the air compressor ON: push the on/off switch to the "I" position.
3. To turn the air compressor OFF: push the on/off switch to the "O" position.



TO CHECK THE SAFETY VALVE (fig. 4)

1. Install the battery pack.
2. Turn the air compressor on and allow the tank to fill. The compressor will shut off when the pressure reaches the cut-out pressure (120 psi).
3. Turn the air compressor off.
4. Pull the ring on the safety valve to release air for three to five seconds to allow pressurized air to escape. Release the ring. The safety valve must reset and hold pressure before all compressed air is exhausted from the tank.
5. Any continued loss of air after performing the above steps indicates a problem with the safety valve. Discontinue use and seek service before continued use of the air compressor.

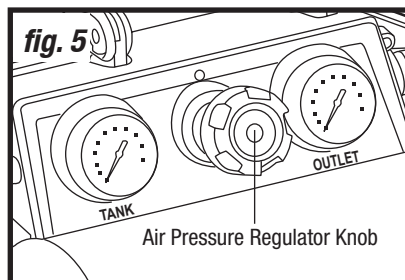


WARNING!

- Always ensure the switch is in the OFF (O) position and the outlet pressure gauge reads zero before changing air tools or disconnecting the hose from the quick coupler on the air compressor. Failure to do so could result in possible serious personal injury.
- Do not attempt to tamper with the safety valve. Anything loosened from this device could fly up and hit you. Failure to heed this warning could result in death or serious personal injury.
- If air leaks after the ring has been released or if the valve is stuck and cannot be actuated by the ring, do not use the air compressor until the safety valve has been replaced. Use of the air compressor in this condition could result in serious personal injury.

TO USE THE AIR COMPRESSOR (fig. 5)

1. Ensure that the on/off switch is in the OFF position and the battery pack is not installed.
2. Attach air hose with quick coupler and the accessory or tool you intend to use.
3. Install the battery pack.
4. Move the on/off switch to the ON position.
5. Set the amount of air pressure desired using the air pressure regulator knob. Turn the knob clockwise to increase or counter-clockwise to decrease the air pressure through the hose.
6. Following all safety precautions in this manual and the manufacturer's instructions in the air tool manual, you may now proceed to use your air-powered tool.
7. When finished, always drain the tank, turn the unit off, and remove the battery packs. Never leave the unit on and/or running unattended.

**NOTICE:**

- Always use the minimum amount of pressure necessary for your application. Using a higher pressure than needed will drain air from the tank more rapidly, cause the unit to cycle on more frequently, and reduce battery run time between charges.
- The air compressor will shut off during an electrical overload. Press the reset switch to let the air compressor work again.

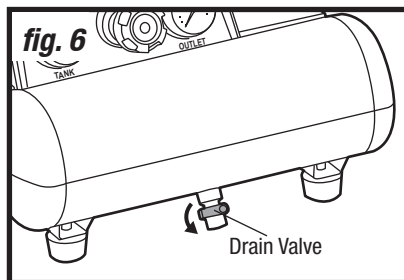
**WARNING!**

- **Risk of bursting.** Do not adjust air pressure regulator knob to result in output pressure greater than marked maximum pressure of attachment and/or the item being inflated. Never use at pressure greater than 125 psi. Failure to heed this warning could result in possible serious personal injury.
- Air-powered tools may require more air consumption than this air compressor is capable of providing. Check the tool manual to avoid damage to the tool or risk of personal injury.

TO DRAIN THE TANK (fig. 6)

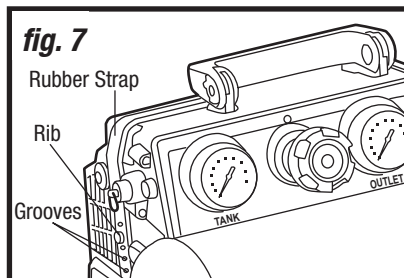
To help prevent tank corrosion and keep moisture out of the air used, the air tank of the compressor should be drained daily.

1. Turn the air compressor off and remove the battery pack.
2. Pull the ring on the safety valve to release air until tank pressure gauge reads less than 20 psi.
3. Release the ring.
4. Turn the drain valves 90° counter-clockwise to the ON (open) position.
5. Tilt tank to drain moisture from tank into a suitable container.
6. If a drain valve is clogged, release all air pressure, remove and clean drain valve, then reinstall.
7. After the water is completely drained, turn the drain valve 90° clockwise to the OFF (closed) position.



TO STORE HOSE WITH THE RUBBER STRAPS (fig. 7)

1. The rubber straps have many grooves so that you can adjust the length of the straps as needed.
2. Wind the hose into straps and align the grooves on the straps with raised rib on the tool.



NOTICE: Condensate is a polluting material and should be disposed of in compliance with local regulations.

MAINTENANCE

BEFORE EACH USE

1. Inspect the air compressor and the accessories for damage.
2. Check for damaged, missing, or worn parts.
3. Check for loose screws, misalignment or binding of moving parts, or any other condition that may affect the operation.
4. If abnormal vibration or noise occurs, turn the tool off immediately and have the problem corrected before further use.
5. Detach the battery pack from the tool before cleaning or performing any maintenance. Always wear safety goggles when cleaning tools using compressed air.



WARNING!

- Turn off the air compressor, remove battery packs, and release all air from the tank before servicing. Failure to depressurize tank before attempting to remove valve could cause serious personal injury.
- Do not let brake fluids, gasoline, petroleum-based products, penetrating oil, etc., come into contact with plastic parts. These substances contain chemicals that can damage, weaken, or destroy plastic.
- When servicing, use only identical replacement parts. The use of any other parts may create a hazard or cause damage to the product.
- Use only accessories that are recommended for this air compressor by the manufacturer. Accessories that may be suitable for one tool may become hazardous when used with another tool.
- To ensure safety and reliability, all repairs should be performed by a qualified service technician.

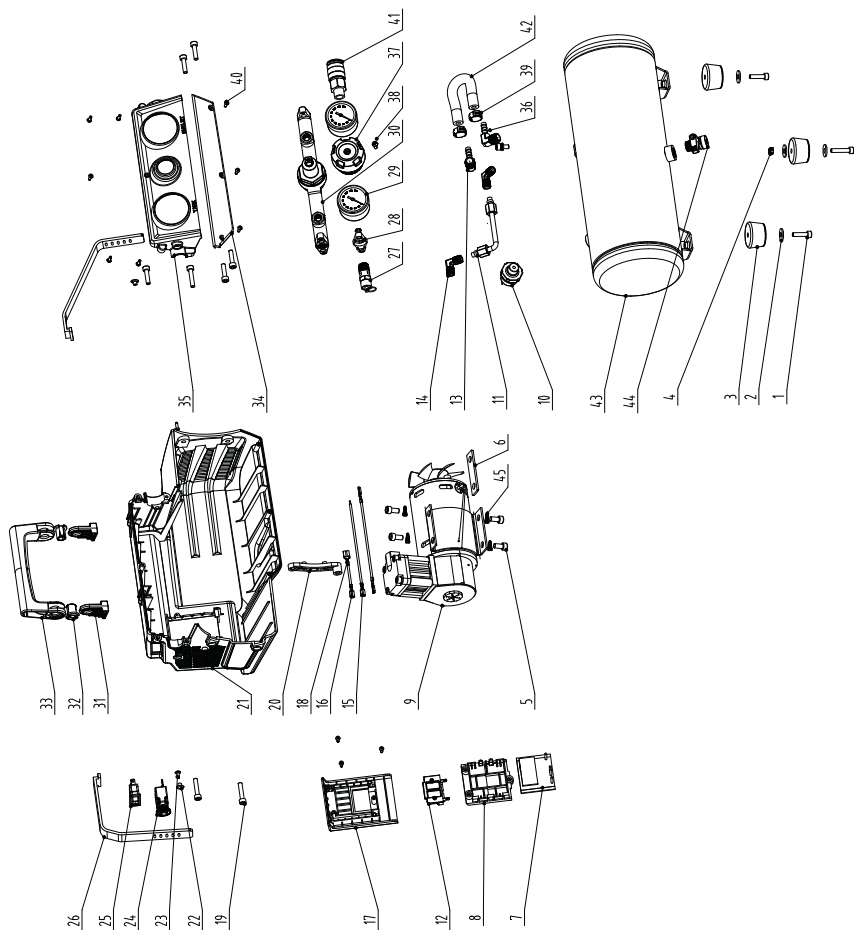
TROUBLESHOOTING

Problem	Possible Causes	Solution
Compressor will not run.	Low battery capacity.	Charge the battery pack.
	Tank is full of air.	Compressor will turn on when tank pressure drops to cut-in pressure.
	Electrical overload.	Press the reset switch to restart the tool.
Excessive moisture in discharge air.	Excessive water in air tank.	Drain the tank.
	High humidity.	Move to area of less humidity.
Air output lower than normal.	Connections leaking.	Tighten connections.

If the problem remains unsolved after performing the checks described above, call the toll-free helpline at 1-800-689-9928.

EXPLODED VIEW

EXPLODED VIEW



No.	Part No.	Description
1	0589863601	Screw
2	0589863602	Flat washer
3	0589863603	Foot pad
4	0589863604	Lock nut
5	0589863605	Screw
6	0589863606	Shaking pad
7	0589863607	PCB
8	0589863608	Fixed board
9	0589863609	Motor assembly
10	0589863610	Pressure switch
11	0589863611	Air intake tube
12	0589863612	Components
13	0589863613	Right-angle elbow
14	0589863614	Quarter bend
15	0589863615	Inner wire
16	0589863616	Female terminal
17	0589863617	Plug-in seat
18	0589863618	Female terminal
19	0589863619	Screw
20	0589863620	Stop block
21	0589863621	Enclosure
22	0589863622	Tie belt buckle
23	0589863623	Screw

No.	Part No.	Description
24	0589863624	Overload protector
25	0589863625	Power switch
26	0589863626	Rubber strap
27	0589863627	Safety valve
28	0589863628	Raising block
29	0589863629	Pressure gage
30	0589863630	Regulating valve
31	0589863631	Handle seat
32	0589863632	Pin roll
33	0589863633	Hand shank
34	0589863634	Head board
35	0589863635	Valve panel
36	0589863636	Right angle elbow adapter
37	0589863637	Screw cap
38	0589863638	Screw
39	0589863639	Clamping band
40	0589863640	Screw
41	0589863641	Quick connector
42	0589863642	Rubber hose
43	0589863643	Tank assembly
44	0589863644	Sewage valve
45	0589863645	Spring washer

If any parts are missing or damaged, or if you have any questions, please call the toll-free helpline at 1-800-689-9928.

This Mastercraft® product is guaranteed for a period of **3 years from the date of original retail purchase** against defects in workmanship and materials, except for the following components:

- a) Component A: Batteries, chargers and carrying case, which are guaranteed for a period of 2 years from the date of original retail purchase against defects in workmanship and materials;
- b) Component B: Accessories, which are guaranteed for a period of 1-year from the date of original retail purchase against defects in workmanship and materials.

Subject to the conditions and limitations described below, this product, if returned to us with proof of purchase within the stated warranty period and if covered under this warranty, will be repaired or replaced (with the same model, or one of equal value or specification), at our option. We will bear the cost of any repair or replacement and any costs of labour relating thereto.

These warranties are subject to the following conditions and limitations:

- a) a bill of sale verifying the purchase and purchase date must be provided;
- b) this warranty will not apply to any product or part thereof which is worn or broken or which has become inoperative due to abuse, misuse, accidental damage, neglect or lack of proper installation, operation or maintenance (as outlined in the applicable owner's manual or operating instructions) or which is being used for industrial, professional, commercial or rental purposes;
- c) this warranty will not apply to normal wear and tear or to expendable parts or accessories that may be supplied with the product that are expected to become inoperative or unusable after a seasonable period of use;
- d) this warranty will not apply to routine maintenance and consumable items such as, but not limited to, fuel, lubricants, vacuum bags, blades, belts, sandpaper, bits, fluids, tune-ups or adjustments;
- e) this warranty will not apply where damage is caused by repairs made or attempted by others (i.e. persons not authorized by the manufacturer);
- f) this warranty will not apply to any product that was sold to the original purchaser as a reconditioned or refurbished product (unless otherwise specified in writing);
- g) this warranty will not apply to any product or part thereof if any part from another manufacturer is installed therein or any repairs or alterations have been made or attempted by unauthorized persons;
- h) this warranty will not apply to normal deterioration of the exterior finish, such as, but not limited to, scratches, dents, paint chips, or to any corrosion or discolouring by heat, abrasive and chemical cleaners; and
- i) this warranty will not apply to component parts sold by and identified as the product of another company, which shall be covered under the product manufacturer's warranty, if any.

Additional Limitations

This warranty applies only to the original purchaser and may not be transferred. Neither the retailer nor the manufacturer shall be liable for any other expense, loss or damage, including, without limitation, any indirect, incidental, consequential or exemplary damages arising in connection with the sale, use or inability to use this product.

Notice to Consumer

This warranty gives you specific legal rights, and you may have other rights, which may vary from province to province. The provisions contained in this warranty are not intended to limit, modify, take away from, disclaim or exclude any statutory warranties set forth in any applicable provincial or federal legislation.

Made in China

Imported by

Mastercraft Canada Toronto, Canada M4S 2B8

