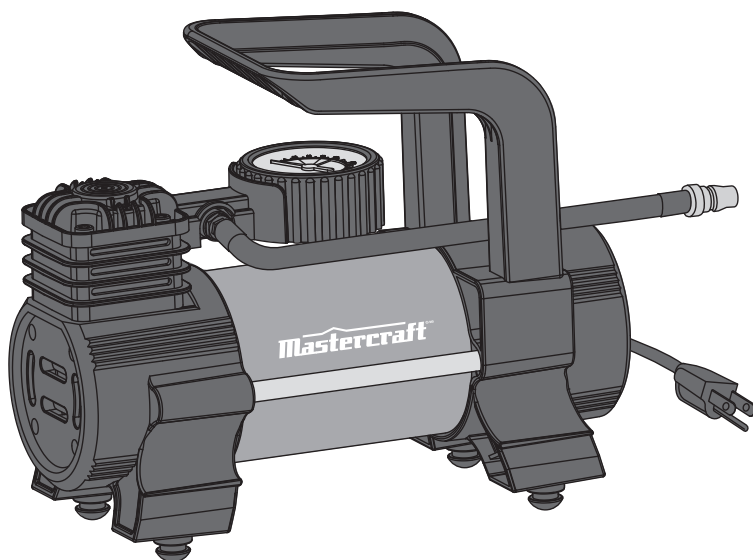


model no. 058-9852-2

Mastercraft®

MULTI-PURPOSE INFLATOR



IMPORTANT:

Please read this manual carefully before running this multi-purpose inflator and save it for reference.

**INSTRUCTION
MANUAL**

TABLE OF CONTENTS

| | |
|------------------------|----|
| SPECIFICATIONS | 4 |
| SAFETY GUIDELINES | 5 |
| KEY PARTS DIAGRAM | 9 |
| SETUP | 10 |
| OPERATING INSTRUCTIONS | 11 |
| MAINTENANCE | 13 |
| TROUBLESHOOTING | 13 |
| PARTS LIST | 14 |
| WARRANTY | 16 |

NOTE:

If any parts are missing or damaged, or if you have any questions, please call our toll-free helpline at 1-800-689-9928.



SAVE THESE INSTRUCTIONS

This manual contains important safety and operating instructions. Read all instructions and follow them with use of this product.

SPECIFICATIONS

| | |
|------------------------|---------------------|
| Power | 120 V 60 Hz 1.5 A |
| Motor speed | 3940 RPM |
| Maximum pressure (PSI) | 150 |
| Air delivery | 2.0 CFM |
| Air outlet size | 5/16" (7 mm) |
| Power cord | 6' (1.8 m) |
| Weight | 5 lb 12 oz (2.6 kg) |

SAFETY GUIDELINES

WORK AREA SAFETY WARNINGS

- **Keep work area clean and well-lighted.** Cluttered or dark areas invite accidents.
- **Do not operate the inflator in explosive atmospheres, such as in the presence of flammable liquids, gases or dust.** Inflator motors produce sparks which may ignite the dust or fumes.
- **Keep children and bystanders away from an operating inflator.**

ELECTRICAL SAFETY WARNINGS

- **Inflator plug must match the outlet. Never modify the plug in any way. Do not use any adaptor plug with grounded inflator.** Standard plug and matching outlets will reduce risk of electric shock.
- **Do not expose inflator to rain or wet conditions.** Water entering an inflator will increase the risk of electric shock.
- **Do not abuse the cord. Never use the cord for unplugging the inflator. Keep cord away from heat, oil, sharp edges or moving parts.** Damaged or entangled cords increase the risk of electric shock.

PERSONAL SAFETY WARNINGS

- **Stay alert, watch what you are doing and use common sense when operating this inflator. Do not use this inflator while you are tired or under the influence of drugs, alcohol or medication.** A moment of inattention while operating an inflator may result in serious personal injury.
- **Use personal protective equipment. Always wear ANSI-approved eye protection during setup and use.**
- **Prevent unintentional starting. Ensure the switch is in the off position before connecting to power source or moving the inflator.**



WARNING!

Read all safety warnings and instructions. Failure to follow the warnings and instructions may result in electric shock, fire and/or serious injury. Save all warnings and instructions for future reference.

CAUTION!

The warnings, precautions, and instructions discussed in this instruction manual cannot cover all possible conditions and situations that may occur. It must be understood by the operator that common sense and caution are factors that cannot be built into this product, but must be supplied by the operator.

INFLATOR SAFETY GUIDELINES

- This multi-purpose inflator is designed to inflate car tires, bike tires, ATV tires, sports equipments, air mattresses, beach toys and other inflatables. It is intended for consumer use only. **Do not use for any purpose other than inflating. Otherwise, bodily harm and/or personal injury may occur.**
- **Do not leave compressor unattended for an extended period while plugged in. Unplug compressor after each use.**
- **Keep compressor well-ventilated. Do not cover compressor during use.**
- Inflator head gets hot during operation. **Do not touch it or allow children nearby during or immediately following operation.**
- Allow inflator to cool down 5 minutes after each 3 minutes of continuous operation at 100 PSI.
- Do not over-inflate. Follow the manufacturer's instructions for the item you are inflating.
- Do not use the air hose to move the inflator. Do not carry the inflator by the air hose or power cord as damage may occur.
- Do not operate the inflator in wet or damp areas.
- Operate the inflator only with the attachments that are included. **The use of accessories or attachments not recommended by the manufacturer may result in a risk of injury to persons.**
- **USE SAFETY GLASSES.** Also use face or dust mask if operation is dusty.
- This product must be grounded. See the **GROUNDING INSTRUCTIONS** hereof.
- Maintain labels and nameplates on the inflator. These carry important safety information. If unreadable or missing, contact the customer service for a replacement.
- People with pacemakers should consult their physician(s) before use. Electromagnetic fields in close proximity to heart pacemaker could cause pacemaker interference or pacemaker failure.
- The brass components of this product contain lead, a chemical known to cause birth defects or other reproductive harm.



WARNING!

Read all safety warnings and instructions. Failure to follow the warnings and instructions may result in electric shock, fire and/or serious injury. Save all warnings and instructions for future reference.

GROUNDING INSTRUCTIONS

IN THE EVENT OF A MALFUNCTION OR BREAKDOWN, grounding provides a path of least resistance for electric current to reduce the risk of electric shock. This inflator is equipped with an electric cord having an equipment-grounding conductor and a grounding plug. The plug **must** be plugged into a matching outlet that is properly installed and grounded in accordance with **all** local codes and ordinances.

DO NOT MODIFY THE PLUG PROVIDED — if it will not fit the outlet, have the proper outlet installed by a qualified electrician.

IMPROPER CONNECTION of the equipment-grounding conductor can result in a risk of electric shock. The conductor with insulation having an outer surface that is green with or without yellow stripes is the equipment-grounding conductor. If repair or replacement of the electric cord or plug is necessary, do not connect the equipment-grounding conductor to a live terminal.

CHECK with a qualified electrician or service personnel if the grounding instructions are not completely understood, or if in doubt as to whether the compressor is properly grounded.

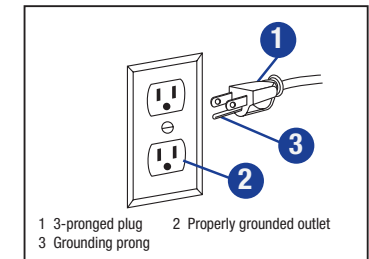
USE ONLY 3-WIRE EXTENSION CORDS that have 3-prong grounding plugs and 3-pole receptacles that accept the inflator's plug.

Repair or replace damaged or worn cord immediately.

This inflator is intended for use on a circuit that has an outlet that looks like the one illustrated above in **120 V~ 3-PRONG PLUG AND OUTLET**. The inflator has a grounding plug that looks like the plug illustrated above in **120 V~ 3-PRONG PLUG AND OUTLET**.

The outlet must be properly installed and grounded in accordance with all codes and ordinances.

Do not use an adaptor to connect this inflator to a different outlet.



WARNING!

TO PREVENT ELECTRIC SHOCK AND DEATH FROM INCORRECT GROUNDING WIRE CONNECTION:

Check with a qualified electrician if you are in doubt as to whether the outlet is properly grounded.

Do not modify the power cord plug provided with the inflator.

Never remove the grounding prong from the plug. Do not use the inflator if the power cord or plug is damaged. If damaged, have it repaired by a service facility before use. If the plug will not fit the outlet, have a proper outlet installed by a qualified electrician.



GUIDELINES FOR USING EXTENSION CORDS

Verify that the extension cord is in good condition. When using an extension cord, be sure to use one that is heavy enough to carry the current that the tool will draw. An undersized cord will cause a drop in line voltage, which will result in loss of power and overheating. The table below shows the correct size to use according to cord length and the amperage rating on the tool's nameplate. When in doubt, use the next heavier gauge. The smaller the gauge number, the heavier the cord.

| Amperage rating of the tool (120 V circuit only) | | Total length of the extension cord | | | |
|---|---------------|--|--------------|---------------|---------------|
| More than | Not more than | 25' (7.6 m) | 50' (15.2 m) | 100' (30.4 m) | 150' (45.7 m) |
| | | Minimum gauge for the extension cord (AWG) | | | |
| 0 | 6 | 18 | 16 | 16 | 14 |
| 6 | 10 | 18 | 16 | Do not use | |
| 10 | 12 | 16 | 16 | Do not use | |
| 12 | 16 | 14 | 12 | Do not use | |

Verify that the extension cord is properly wired and in good condition. Always replace a damaged extension cord, or have it repaired by a qualified electrician before using it. Keep extension cords away from sharp objects, excessive heat, and damp or wet areas.

INFLATOR USE AND CARE SAFETY WARNINGS

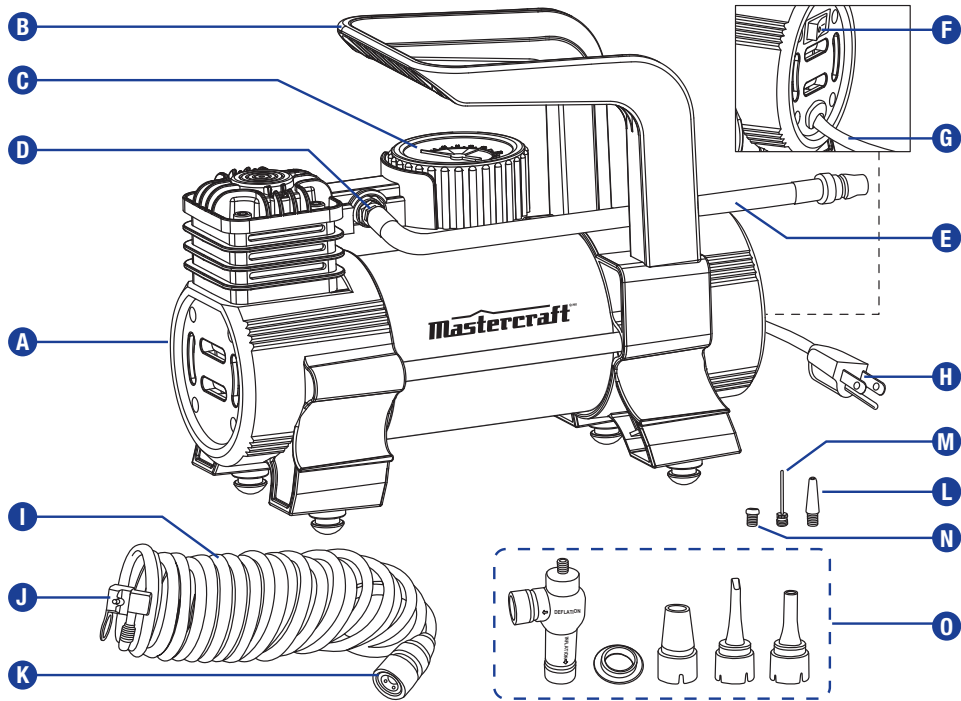
- Do not use the inflator if the switch does not turn it on and off. Any inflator that cannot be controlled with the switch is dangerous and must be repaired.
- Disconnect the plug from the power source before making any adjustments, changing accessories, or storing the inflator. Such preventive safety measures reduce the risk of starting the inflator accidentally.
- Store an idle inflator out of the reach of children and do not allow persons unfamiliar with the inflator or these instructions to operate it. An inflator is dangerous in the hands of untrained users.
- Maintain the inflator. Keep the inflator clean for better and safer performance. Keep dry, clean and free from oil and grease. Check for misalignment or binding of moving parts, breakage of parts and any other condition that may affect the inflator's operation. If damaged, have the inflator repaired before use. Many accidents are caused by a poorly maintained inflator.
- Use the inflator in accordance with these instructions, taking into account the working conditions and the work to be performed. Use of the inflator for operations different from those intended could result in a hazardous situation.

SERVICE SAFETY WARNINGS

- Have your inflator serviced by a qualified repair person using only identical replacement parts. This will ensure that the safety of the inflator is maintained.

KEY PARTS DIAGRAM

| No. | Description | No. | Description |
|-----|------------------------|-----|-------------------------|
| A | Multi-purpose inflator | I | Recoil air hose |
| B | Carrying handle | J | Lock-on tire chuck |
| C | Pressure gauge | K | Quick connect coupler |
| D | Inflator air outlet | L | Mattress nozzle |
| E | Rubber air hose | M | Sports ball needle |
| F | On/Off switch | N | Presta valve adaptor |
| G | Power cord | O | 5 High flow accessories |
| H | Power cord plug | | |



WARNING!

This product must be grounded while in use in order to protect the operator from electric shock.



WARNING!

If any part is missing or damaged, do not use the product until the missing or damaged part has been replaced.

SETUP OF THE INFLATOR

1. Place the inflator (A) evenly on flat surface.
2. Connect the recoil air hose (I) to the inflator by pulling back the quick connect coupler (K) and inserting it onto the fitting at the end of the rubber hose (E). Push firmly and release the quick connect coupler—you will hear a click when the quick connect coupler is attached onto the fitting securely and in place.
3. Insert the power cord plug (H) into the nearest 120-volt, grounded, electrical outlet.
4. Turn on the On/Off power switch (F) and inspect the air connections for leaks.
5. Turn off the On/Off power switch and unplug the inflator, then repair any leaks found.

IMPORTANT: This inflator operates only on AC 120 Volt. Do not attempt to operate this inflator with any other source or voltage. Do not rewire or reconfigure the inflator from its original design or personal injury and/or bodily harm may occur.

SETUP OF INFLATOR AREA

1. Designate a work area that is clean and well-lighted. The work area must not allow access by children or pets to prevent injury.
2. Locate the inflator on a flat, level surface to prevent damage to the unit. Keep at least 12" (30 cm) of space around the unit to allow air circulation.
3. Route the power cord from the inflator to the grounded wall outlet, along a safe path without creating a tripping hazard or exposing the power cord to possible damage.

**WARNING!**

- Read the entire important safety information at the above section of "SAFETY GUIDELINES" before set up or use of this product.
- To prevent serious injury from accidental operation, turn the power switch "Off" and unplug the inflator from its electrical outlet before assembling or making any adjustments to the inflator.
- Before operating, make sure the inflator is set up in a well-ventilated area, on a flat, level, solid surface well away from any flammable objects, such as drapes. Never operate without proper ventilation, or near possible ignition sources.

**OPERATING INSTRUCTIONS**

IMPORTANT: Before operation, follow all the instructions in the SETUP section.

IMPORTANT: Inflation time may vary depending on size of tire, climate, temperature and voltage level of vehicle/internal battery.

TO INFLATE ITEM:

1. Plug the inflator power cord (G) into a grounded 120 Volt outlet.
2. Connect the lock-on tire chuck (J) to the tire air valve. Unlock the tire chuck by pulling the chuck tab up. Lock the tire chuck once it is fixed to the tire valve. Make sure that the tire chuck is attached to the tire valve stem tightly and securely.
3. Turn on the On/Off switch (F) of the inflator (A). Monitor the PSI on the pressure gauge (C) to fill your item to the desire pressure.
4. Turn the inflator off once the desired air pressure in the tire has been reached.
5. Remove the tire chuck (J) from the tire valve stem.
6. Unplug the inflator after use.

IMPORTANT: When inflating bike tires, sports equipments and air mattresses, use the Presta valve adaptor (N), sports ball needle (M), or mattress nozzle (L) as needed. Insert it to the central hole of the tire chuck (J) before inflation.

IMPORTANT: This inflator features a pressure gauge (C) with glow-in-the-dark display for easy reading of tire pressure during the inflation process.

USE OF 5 HIGH FLOW ACCESSORIES

IMPORTANT: The high air accelerator kit is a great device for inflating or deflating air mattresses, small boats, inflatable toys and a variety of other items which use a large volume of low pressure air.

IMPORTANT: The attachments are not to be used with automobile tires, bicycle tires, sports balls, or any other high pressure inflatables.

IMPORTANT: The high flow air accelerator kit comes with three nozzles of varying sizes, an air accelerator body and an enlargement collar to prevent the air from leaking out of the inflatable when it is being filled.

**WARNING!**

- Do not over-inflate the item being inflated. Monitor air pressure (PSI) at all times during the inflation process by observing the pressure gauge on the inflator.
- To prevent serious injury from inflator failure, do NOT use damaged equipment. If abnormal noise or vibration occurs, have the problem corrected before further use.
- To prevent serious injury from accidental operation, turn the power switch "OFF" and unplug the inflator from its electrical outlet before performing any inspection, maintenance, or cleaning procedures.
- If the power cord of this inflator is damaged, it must be replaced only by a qualified technician.

To Inflate:

1. Select the best fitting nozzle for your inflatable and install it on the end of the air accelerator body. Use the enlargement collar with the largest nozzle when the air inlet of the inflatable is extra-large.
2. The air accelerator body can be used without any of the accessory nozzles if the valve in the inflatable is large enough.
3. Attach the tire chuck (J) from the inflator onto the threaded side inlet nipple of the air accelerator body. The outlet tubes on the air accelerator body are marked "INFLATE" and "DEFLATE". If you wish to INFLATE, simply attach the correct size nozzle (small, medium, or large one) onto the inflation outlet and put the other end of the nozzle into the valve of the inflatable to be inflated.

IMPORTANT: Many inflatables, especially air mattresses, have an internal flap that prevents air loss. Unless this flap is displaced by the nozzle or end of the air accelerator body, the air mattress will not inflate or deflate. Push the nozzle or end firmly into the valve to ensure that you push this flap out of the way to allow proper airflow.

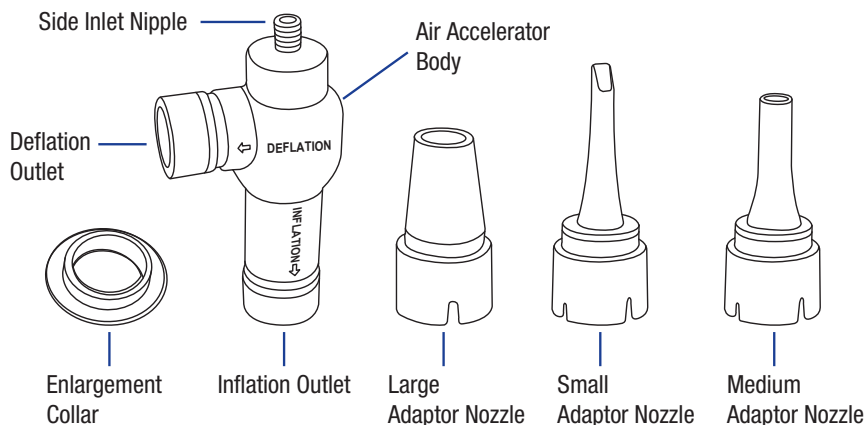
IMPORTANT: If you cannot get your inflatable firm enough to suit your needs, place your thumb directly over the deflection outlet. This will allow more air to go directly into the inflatable. When inflating items such as large rubber boats, etc., it will sometimes be necessary to "top off" your inflatable with a foot pump or large volume hand pump.

To Deflate:

If you wish to DEFLATE, follow the same procedure as above using the deflation outlet which is marked "DEFLATE".

IMPORTANT: If you are purchasing an inflatable, keep in mind that the larger hole it has, the faster it can be inflated and deflated.

HIGH FLOW AIR ACCELERATOR KIT DIAGRAM



MAINTENANCE

1. **Before each use**, inspect the general condition of the inflator. Check for loose hardware, misalignment or binding of moving parts, cracked or broken parts, damaged electrical wiring, and any other condition that may affect its safe operation.
2. **After use**, wipe external surfaces of the inflator with a clean cloth.
3. Store the inflator in a clean, dry, safe location out of reach of children and other unauthorized people.



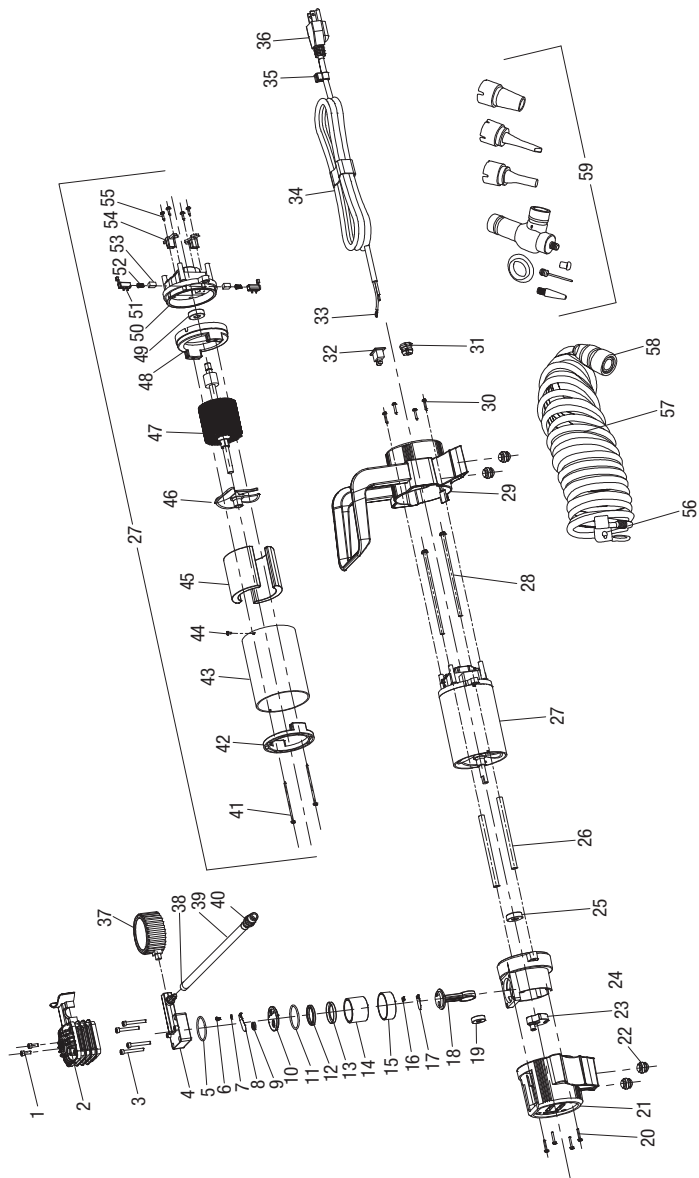
WARNING!

- Procedures not specifically explained in this manual must be performed only by a qualified technician.
- To prevent serious injury from inflator failure, do not use damaged equipment. If abnormal noise or vibration occurs, have the problem corrected before further use.
- To prevent serious injury from accidental operation, turn the power switch off and unplug the inflator from its electrical outlet before performing any inspection, maintenance, or cleaning procedures.
- If the supply cord of this compressor is damaged, it must be replaced only by a qualified service technician.

TROUBLESHOOTING

| Problem | Possible Causes | Likely Solutions |
|--|--|---|
| The motor does not work. | 1. No electrical power. 2. Damaged power cord. 3. Electrical wiring within the unit is defective. 4. Power switch is defective. | 1. Plug the power cord into a working, 120V~, grounded, electrical outlet. 2. Have a qualified service technician replace the power cord. 3. Have a qualified service technician replace electric wiring. 4. Have a qualified service technician replace power switch. |
| The motor runs, but it makes irregular noises or a knocking noise. | 1. Bearing is loose or damaged. 2. Screws in the connection rod are loose. | 1. Have a qualified service technician replace the bearing. 2. Tighten the screws, or replace them if necessary. |
| Not enough pressure. | 1. Loose air connection(s). 2. Air hose is damaged. 3. Screws on cylinder cover are loose. | 1. Check all air connections, and tighten them if necessary 2. Replace air hose. 3. Tighten screws. |
| Motor runs properly, but no air pressure or lack of air delivery. | 1. Valve plate is loose or out of place. 2. Retainer ring is damaged after excessive use at high pressure. | 1. Open the front cover and make sure the valve plate is in the proper position. Tighten the screws if necessary. 2. Have a qualified service technician replace the retainer ring. |

EXPLODED VIEW



NOTE:

The manufacturer and/or distributor has provided the parts list and assembly diagram in this manual as a reference tool only. Neither the manufacturer or distributor makes any representation or warranty of any kind to the buyer that he or she is qualified to make any repairs to the product, or that he or she is qualified to replace any parts of the product. In fact, the manufacturer and/or distributor expressly states that all repairs and parts replacements should be undertaken by certified and licensed technicians, and not by the buyer. The buyer assumes all risk and liability arising out of his or her repairs to the original product or replacement parts thereto, or arising out of his or her installation of replacement parts thereto.

| No. | Description | Qty. |
|-----|--------------------|------|
| 1 | Screw | 2 |
| 2 | Cylinder cover | 1 |
| 3 | Screw | 4 |
| 4 | Cylinder | 1 |
| 5 | Seal ring | 1 |
| 6 | Screw | 1 |
| 7 | Gasket | 1 |
| 8 | Air exhaust slice | 1 |
| 9 | Seal ring | 1 |
| 10 | Intake valve slice | 1 |
| 11 | Seal ring | 1 |
| 12 | Press ring | 1 |
| 13 | Piston ring | 1 |
| 14 | Cylinder liner | 1 |
| 15 | Radiator sleeve | 1 |
| 16 | Fixing plate | 1 |
| 17 | Air intake slice | 1 |
| 18 | Connecting rod | 1 |
| 19 | Bearing | 1 |
| 20 | Screw | 4 |
| 21 | Front cover (1) | 1 |
| 22 | Shockproof pad | 4 |
| 23 | Offset wheel | 1 |
| 24 | Front cover (2) | 1 |
| 25 | Bearing | 1 |
| 26 | Fixed stud | 2 |
| 27 | Motor | 1 |
| 28 | Screw | 2 |
| 29 | End cover | 1 |
| 30 | Screw | 4 |

| No. | Description | Qty. |
|-----|----------------------|------|
| 31 | Wire nail | 1 |
| 32 | Switch | 1 |
| 33 | Blade terminal | 1 |
| 34 | Wire | 1 |
| 35 | Wire nail | 1 |
| 36 | AC plug | 1 |
| 37 | Pressure gauge | 1 |
| 38 | Locking ring | 2 |
| 39 | Rubber hose | 1 |
| 40 | Quick connector | 1 |
| 41 | Screw | 2 |
| 42 | Set ring | 1 |
| 43 | Motor housing | 1 |
| 44 | Screw | 1 |
| 45 | Magnetic tile | 2 |
| 46 | Blade | 1 |
| 47 | Rotor | 1 |
| 48 | Set ring | 1 |
| 49 | Bearing | 1 |
| 50 | Brush holder | 1 |
| 51 | Brush holder bushing | 2 |
| 52 | Spring | 2 |
| 53 | Brush | 2 |
| 54 | Brush holding plate | 2 |
| 55 | Screw | 4 |
| 56 | Air nozzle | 1 |
| 57 | Air hose | 1 |
| 58 | Quick connector | 1 |
| 59 | Accessories | 8 |

3-Year Limited Warranty

This Mastercraft product is guaranteed for a period of **three (3) years** from the date of original retail purchase, against defects in materials and workmanship.

Subject to the conditions and limitations described below, this product, if returned to us with proof of purchase within the stated warranty period and if covered under this warranty, will be repaired or replaced (with the same model, or one of equal value or specification), at our option. We will bear the cost of any repair or replacement and any costs of labour relating thereto.

These warranties are subject to the following conditions and limitations

- a) a bill of sale verifying the purchase and purchase date must be provided;
- b) this warranty will not apply to any product or part thereof which is worn or broken or which has become inoperative due to abuse, misuse, accidental damage, neglect or lack of proper installation, operation or maintenance (as outlined in the applicable owner's manual or operating instructions) or which is being used for industrial, professional, commercial or rental purposes;
- c) this warranty will not apply to normal wear and tear or to expendable parts or accessories that may be supplied with the product which are expected to become inoperative or unusable after a reasonable period of use;
- d) this warranty will not apply to routine maintenance and consumable items such as, but not limited to, fuel, lubricants, vacuum bags, blades, belts, sandpaper, bits, fluids, tune-ups or adjustments;
- e) this warranty will not apply where damage is caused by repairs made or attempted by others (i.e., persons not authorized by the manufacturer);
- f) this warranty will not apply to any product that was sold to the original purchaser as a reconditioned or refurbished product (unless otherwise specified in writing);
- g) this warranty will not apply to any product or part thereof if any part from another manufacturer is installed therein or any repairs or alterations have been made or attempted by unauthorized persons;
- h) this warranty will not apply to normal deterioration of the exterior finish, such as, but not limited to, scratches, dents, paint chips, or to any corrosion or discolouring by heat, abrasive and chemical cleaners; and
- i) this warranty will not apply to component parts sold by and identified as the product of another company, which shall be covered under the product manufacturer's warranty, if any.

Additional Limitations

This warranty applies only to the original purchaser and may not be transferred. Neither the retailer nor the manufacturer shall be liable for any other expense, loss or damage, including, without limitation, any indirect, incidental, consequential or exemplary damages arising in connection with the sale, use or inability to use this product.

Notice to Consumer

This warranty gives you specific legal rights, and you may have other rights, which may vary from province to province. The provisions contained in this warranty are not intended to limit, modify, take away from, disclaim or exclude any statutory warranties set forth in any applicable provincial or federal legislation.

Made in China

Imported by

Mastercraft Canada Toronto, Canada M4S 2B8