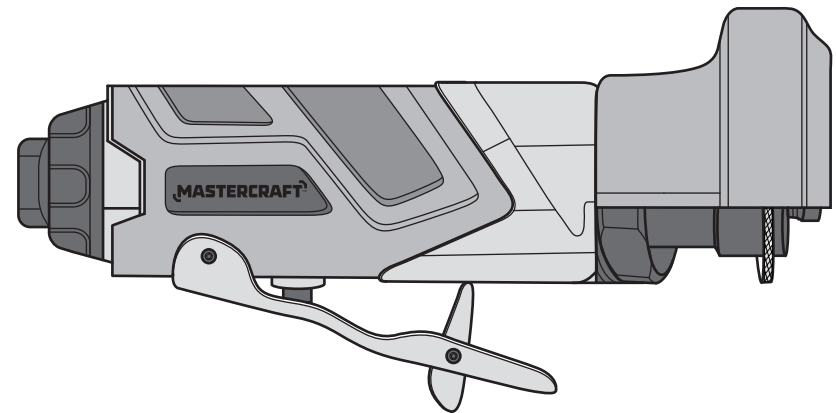




model no. 058-9333-8
AIR-POWERED
CUT-OFF TOOL



IMPORTANT:

For your own safety, read and follow all of the Safety Guidelines and Operating Instructions before operating this cut-off tool.
Keep this manual for future reference.

**INSTRUCTION
MANUAL**

TABLE OF CONTENTS

TECHNICAL SPECIFICATIONS	3
SAFETY GUIDELINES	4
KEY PARTS DIAGRAM	10
IMPORTANT INFORMATION	11
OPERATING INSTRUCTIONS	14
MAINTENANCE	16
TROUBLESHOOTING	18
EXPLODED VIEW	19
PARTS LIST	20
WARRANTY	21

NOTE: If any parts are missing or damaged, or if you have any questions, please call our toll-free helpline at 1-800-689-9928.



SAVE THESE INSTRUCTIONS

This manual contains important safety and operating instructions. Read all instructions and follow them with use of this product.

model no. 058-9333-8 | contact us 1-800-689-9928

TECHNICAL SPECIFICATIONS

CUT-OFF DISC SIZE	3" (75 mm)
ARBOUR DIAMETER	3/8" (10 mm)
SPEED (NO LOAD)	18,000 RPM
CUTTING DEPTH	1 1/6" (26 mm)
CFM REQUIREMENT	2.7 @ 90 PSI
WORKING PRESSURE	90 PSI (6.3 bar)
AIR INLET	1/4" - 18 NPT
AIR HOSE REQUIRED	3/8" (9.5 mm)
WEIGHT	1 lb 12 oz (0.8 kg)

CF: Cubic Feet (the volumetric flow rate of air corrected to standardized conditions of temperature and pressure).

NPT: National Pipe Thread.

SAFETY GUIDELINES

This manual contains information that relates to PROTECTING PERSONAL SAFETY and PREVENTING EQUIPMENT PROBLEMS. It is very important to read this manual carefully and understand it thoroughly before using the product. The symbols listed below are used to indicate this information.



DANGER!

Potential hazard that will result in serious injury or loss of life.



WARNING!

Potential hazard that could result in serious injury or loss of life.



CAUTION!

Potential hazard that may result in moderate injury or damage to equipment.

Note: The word “Note” is used to inform the reader of something he/she needs to know about the tool.

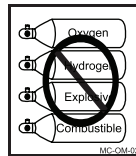
PERSONAL SAFETY

These precautions are intended for the personal safety of the user and others working with the user. Please take time to read and understand them.

**DANGER!**

Potential hazard that will result in serious injury or loss of life.

- Keep children away from the work area. Do not allow children to handle power tools.
- Do not use this tool in the presence of flammable liquids or gases. Sparks that are created during use may ignite gases.
- Do not point the tool towards yourself or other people, even when the tool has stopped. Keep hands, feet, and all other parts of the body clear from work area.
- Always ensure that the work piece is firmly secured leaving both hands free to control the tool.
- Always ensure that the tool has stopped before putting it down after use, in the interest of safety and to prevent possible damage to the tool/user.
- Wear an appropriate face mask or respiratory equipment while cutting.
- Do not use oxygen or any other combustible or bottled gas to power air-powered tools. Failure to observe this warning can cause explosion and serious personal injury or death. Use only compressed air to power air-powered tools. Use a minimum of 25' (7.6 m) of hose to connect the tool to the compressor. Failure to comply will result in serious injury or loss of life.



- Risk of electric shock: Do not expose a compressor to rain. Store it indoors. Disconnect the compressor from the power source before servicing. Compressor must be grounded. Do not use grounding adaptors.



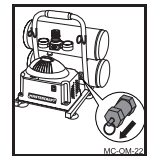
- Risk of personal injury: Do not direct compressed air from the air hose toward the user or other personnel.

- Risk of inhalation: Never directly inhale the air produced by the compressor.

- Risk of bursting: Do not adjust the pressure switch or safety valve for any reason. They have been preset at the factory for this compressor's maximum pressure. Tampering with the pressure switch or the safety valve may cause personal injury or property damage.

- Risk of burns: The pump and the manifold generate high temperatures. In order to avoid burns or other injuries, do not touch the pump, the manifold, or the transfer tube while the compressor is running. Allow the parts to cool down before handling or servicing. Keep children away from the compressor at all times.

- Risk of bursting: Make sure the regulator is adjusted so that the compressor outlet pressure is set lower than the maximum operating pressure of the tool. Before starting the compressor, pull the ring on the safety valve to make sure the valve moves freely. Drain water from tank after each use. Do not weld or repair tank. Relieve all pressure in the hose before removing or attaching accessories.



**WARNING!**

Potential hazard that could result in serious injury or loss of life.

- Do not allow unskilled or untrained individuals to operate this air-powered tool.
- Always ensure that accessories such as the cutting disc are specially designed for use with the tool. Also ensure they are secured and correctly fastened before connecting the tool to the air supply.
- Use only abrasive type of blade unless specified by the manufacturer.
- Never use this tool in the presence of any flammable materials, liquids, or gases. Sparks that are created when cutting may ignite the flammable materials.
- Do not increase the air pressure above the manufacturer's recommended level. This causes excessive wear on moving parts and possible failures.
- Always ensure that cutting disc utilized with this tool is rated at or above the speed rating of the tool (18,000 RPM). Failure to properly match the cutting accessory to the tool could result in serious personal injury.
- Locate the compressor in a well-ventilated area for cooling, at a minimum of 12" (31 cm) away from the nearest wall.
- Protect the air hose and the power cord from damage and puncture. Inspect them for weak or worn spots every week, and replace them if necessary.
- Always wear hearing protection when using the air compressor. Failure to do so may result in hearing loss.
- Do not carry the compressor while it is running.
- Do not operate the compressor if it is not in a stable position.
- Do not operate the compressor on a rooftop or in an elevated position that could allow the unit to fall or be tipped over.

**CAUTION!**

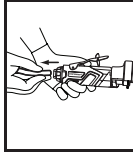
Potential hazard that may result in moderate injury or damage to equipment.

- Always ensure that the tool has stopped before connecting it to the air supply.
- Do not wear watches, rings, bracelets or loose clothing when using any air tool.
- Keep proper footing at all times in order to ensure correct balance.
- Do not overload the tool. Allow the tool to operate at its optimum speed for maximum efficiency.
- Do not use a tool that is leaking air, with missing or damaged parts, or that requires repairs. Verify that all screws are securely tightened.
- For optimal safety and tool performance, inspect the tool daily in order to ensure free movement of the trigger, safety mechanisms, and spring.
- Always keep your air tool clean and lubricated. Daily lubrication is essential to avoid internal corrosion and possible failures.
- Keep the work area clean. A cluttered or dirty workbench may lead to an accident. Floors should be kept clear.
- Use the tool only in a well-ventilated area.
- Handling and storage of oil: Use with adequate ventilation. Avoid contact of oil with eyes, skin, and clothing. Avoid breathing spray or mist. Store in a tightly closed container in a cool, dry, well-ventilated area free from incompatible substances.
- Do not use the tool near or below freezing temperatures, as doing so may cause tool failure.
- Do not store the tool in a freezing environment to prevent ice formation on the operating valves of the tool, as that may cause tool failure.

**CAUTION!**

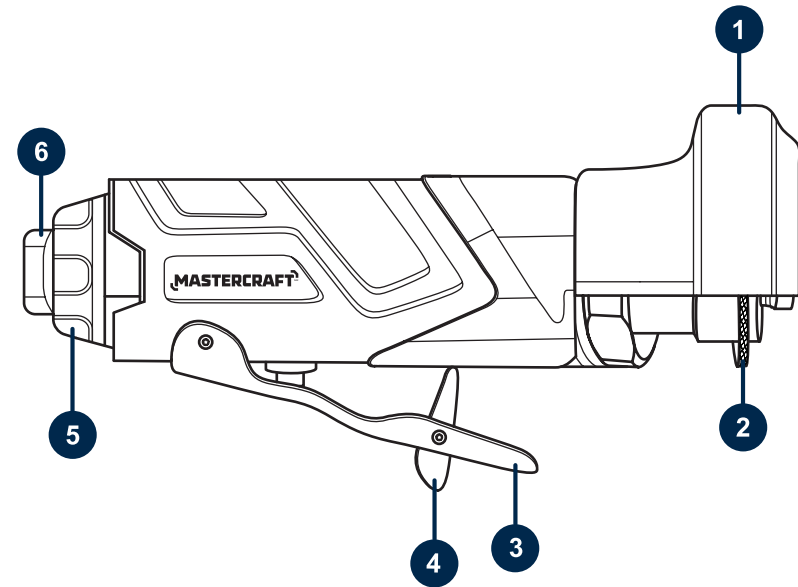
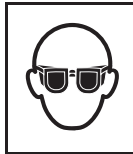
Potential hazard that may result in moderate injury or damage to equipment.

- Disconnect the tool from the air supply and turn off the compressor before performing any maintenance or changing accessories, when the tool is not in use, when it is being handed to another person, and when it is left unattended. Failure to comply may result in moderate injury or damage to equipment.



- Use safety goggles and ear protection:
Wear safety glasses with side shields when operating the tool and verify that others in the work area are also wearing safety glasses. Safety glasses must conform to American National Standards Institute (ANSI Z87.1) requirements and must provide protection from flying particles from the front and the sides.

Air-powered tools are loud and the sound can cause hearing damage. Always wear ear protection to help prevent hearing damage and loss. Failure to comply may result in moderate injury.



No.	Description	No.	Description
1	Wheel guard	4	Safety lock
2	Cutting disc	5	Exhaust port
3	Trigger	6	Air inlet port for 1/4" (6.4 mm) NPT attachment knob

Note: Recycle unwanted materials rather than disposing of them as waste. Sort the tools, hoses, and packaging in specific categories and take to a local recycling centre or dispose of them in an environmentally safe way.

General usage description

The Mastercraft® Air-powered Cut-off Tool features a housing made of durable, lightweight aluminum. The palm trigger lever features a safety lock for added safety. The tool is designed with an aluminum wheel guard and rear exhaust. A built-in air regulator facilitates simple power and speed control. Solid metal construction ensures safety during prolonged usage. The tool is useful for cutting through a variety of objects and materials.

Compatible compressor

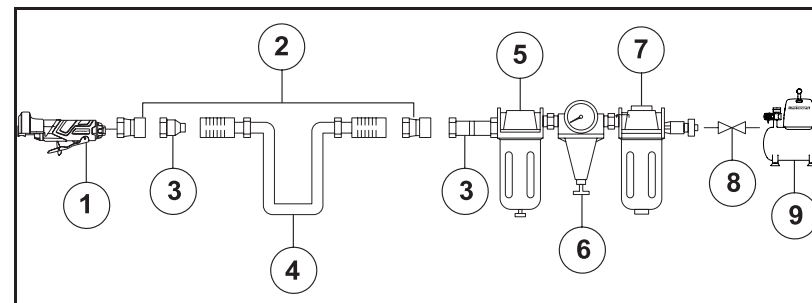
GUIDELINES FOR PROPER USAGE AND OPERATION

Always ensure the use of appropriately matched air tools and compressors. The compressor should be able to supply a minimal air delivery of 4 CFM @ 90 PSI to ensure the compressor can run continuously with the Mastercraft® Air-powered Cut-off Tool. Using tools or a combination of tools that together or separately require more than the air compressor can deliver will reduce performance and could void the compressor or tool guarantee/warranty.

Air compressor Size & Power	2 HP	2 1/2 HP	3+ HP
5–6 Gallons	Light-duty and intermittent use	Medium-duty and intermittent use	Medium-duty and intermittent use
8–11 Gallons	Medium-duty and intermittent use	Heavy-duty and continuous use	Heavy-duty and continuous use
15+ Gallons	Heavy-duty and continuous use	Heavy-duty and continuous use	Heavy-duty and continuous use

Air system

- Always use clean, dry, regulated, compressed air at (60 to 100 PSI) 4 to 7 bar.
- Do not exceed the maximum and minimum pressures. Operating the tool at the wrong pressure (too low or too high) will cause excessive noise or rapid wear.



No.	Description	No.	Description
1	Mastercraft® Air-powered Cut-off Tool	6	Regulator 0 - 123 PSI (0 to 8.5 bar)
2	Quick connector	7	Filter
3	Quick coupler	8	Cut-off valve
4	Air hose	9	Air compressor
5	Lubricator		



WARNING!

Potential hazard that could result in serious injury or loss of life.

- Keep hands and other parts of the body away from the work areas when connecting the tool to the air supply. Failure to comply could lead to serious injury or loss of life.
- It is recommended that a filter-regulator-lubricator be used and be located as close to the tool as possible.
- If a filter-regulator-lubricator is not installed, place up to 6 drops of pneumatic tool oil into the air inlet plug before each use.
- If a filter-regulator-lubricator is installed, keep the air filter clean. A dirty filter will reduce the air pressure to the tool, which will cause a reduction in power, efficiency, and general performance.
- For optimal performance, install a quick connector to the tool and a quick coupler on the hose, if applicable.

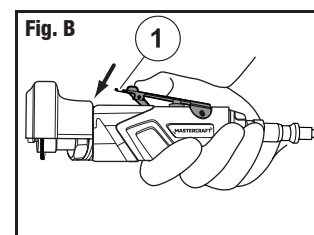
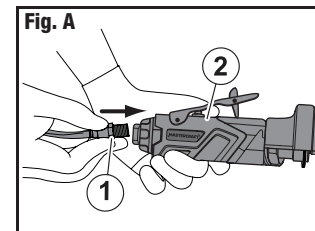
AIR TOOLS

Read this instruction manual thoroughly before using the tool.

- Read all safety guidelines (see section “Safety guidelines”) at the beginning of this manual.
- Always inspect the air tool prior to each use to
 - ensure proper use of power source.
 - determine whether the tool is in proper working order.
- Only use cutting disc which are specifically designed for use with this tool. (see section “Technical specifications”).
- Drain the compressor tank daily. Water in the air supply line will damage the tool.
- Clean the air inlet and the filter weekly.
- Line pressure should be increased to compensate for unusually long air hoses. The hose diameter should be 3/8”.

Operation

1. Plug in compressor, turn it on, set pressure regulator to 90 PSI, and attach one end of the air hose to the compressor and the other end of the air hose (1) to the tool (2) using the quick connect fitting (Fig. A). Use plumber's tape to prevent air leaks.



2. Press the trigger (1) in order to operate the tool (Fig. B).

3. Verify that the air supply is clean and it does not exceed 90 PSI while operating the tool.

**CAUTION!**

Potential hazard that may result in moderate injury or damage to equipment.

- Verify that all connections in the air supply system are sealed in order to prevent air from leaking. Failure to comply may result in moderate injury or damage to equipment.

**WARNING!**

Potential hazard that could result in serious injury or loss of life.

- Do not use the tool if it is not in proper working order.
- Do not use oxygen or any other combustible or bottled gas to power this tool.
- Do not use this tool in the presence of any flammable liquids or gases.
- Keep hose away from heat, oil, and sharp edges. Check hose for wear and tear, ensure that all connections are secure. Failure to comply could lead to serious injury or loss of life.

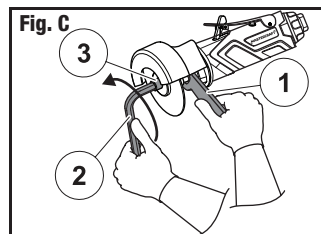
**WARNING!**

Potential hazard that could result in serious injury or loss of life.

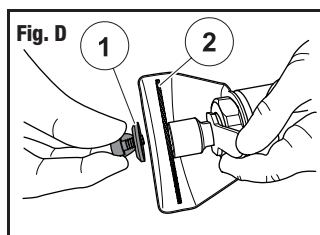
- Read all instructions in this manual carefully and understand them thoroughly before using the Air-powered Cut-off Tool. Failure to comply could lead to serious injury or loss of life.

Changing the cutting disc

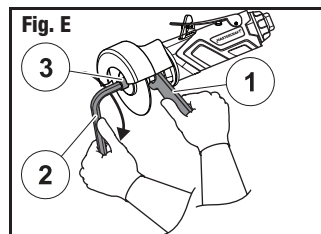
1. Firmly lock the cutting disc from rotating using the wrench (1) provided. Use the hex key (2) and remove hex bolt (3) holding the blade (Fig. C).



2. Insert the hex bolt (1) upon fixing the new cutting disc (2) in position (Fig. D).



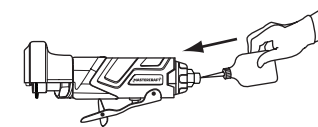
3. Firmly lock the cutting disc from rotation using the wrench (1) provided. Use the hex key (2) and tighten the hex bolt (3) (Fig. E).



Maintenance

MAINTENANCE REQUIRED	DESCRIPTION	TOOLS OR MATERIALS REQUIRED	MAXIMUM SERVICE INTERVAL		
			Each use or every 2 hrs	Monthly	As needed
General inspection for free movement	Trigger, spring, safety mechanism	None	X		
In-depth inspection	Worn or broken parts			X	X
Replace worn or broken parts					X
Lubrication	See below	Pneumatic tool oil	X		

- Lubrication: If the Air-powered Cut-off Tool and the compressor are not equipped with an in-line lubrication system, place up to 6 drops of pneumatic tool oil into the air inlet before each work day or after every 2 hours of continuous use, depending on the characteristics of the workpiece.



WARNING!

Potential hazard that could result in serious injury or loss of life.

- Ensure the hex bolts are tightened properly upon changing the cutting disc before operating the tool.
- Do not use additional and excessive force on the tool when cutting. Failure to comply could lead to serious injury or loss of life.
- Do not allow the tool to run freely for an extended period of time, as doing so will shorten the life of the cut-off tool.



WARNING!

Potential hazard that could result in serious injury or loss of life.

- Disconnect the tool from the air supply before changing accessories, servicing, or performing maintenance.
- Only use the tool after replacing or repairing the damaged parts or accessories.
- Use only recommended and properly rated replacement parts and cutting disc. Failure to comply could lead to serious injury or loss of life.

- Air-operated tools must be inspected periodically and worn or broken parts must be replaced in order to keep tools operating safely and efficiently.
- Inspect and replace worn or damaged O-rings, seals, etc. Tighten all screws and caps frequently in order to help prevent personal injury.
- Inspect the trigger, spring, and safety mechanism for free movement on a regular basis in order to ensure that the safety system is fully functional. Verify that no parts are loose or missing.
- Repairs must be performed by a qualified service technician only.
- Loss of power or erratic action may be due to the following:
 - Excessive drain on the air line, moisture or restriction in the air supply line, incorrect size or type of hose connectors. To remedy, check the air supply and follow instructions.
 - Grit or gum deposits in the Air-powered Cut-off Tool may also reduce its performance.
- When the tool is not in use, disconnect it from the air supply, clean it, and store it in a safe, dry, childproof location.

Storage

- When the tool is stored for longer periods of time, apply an ample amount of lubrication before storing.
- Run the tool for approximately 30 seconds after lubricating, in order to ensure that the lubrication is uniformly distributed throughout the tool.
- Store the tool in a clean and dry environment.

Note: When temperatures are below freezing, keep tools as warm as possible using any safe, convenient method.



CAUTION!

Potential hazard that may result in moderate injury or damage to equipment.

- Never use damaged parts.
- Never soak the tool in cleaning solution as it can cause internal damage.
- Always ensure that all the screws are kept tight, as loose screws can cause personal injury or damage to the tool.
- Do not use an excessively worn tool. Failure to comply may result in moderate injury or damage to equipment.

Troubleshooting

The following chart lists common issues and solutions. Please read it carefully and follow all instructions closely.

PROBLEM	POSSIBLE CAUSES	SOLUTIONS
The tool does not run or runs slowly.	1. Motor valve or air inlet is blocked. 2. Motor blades are worn.	1. Clear the block. Add oil to air inlet. Pull the trigger several times. 2. Replace the blade and sealing ring.
Tool runs at low speed. Air flows slightly from exhaust.	1. Air flow is blocked by dirt. 2. Dirt particles are jammed in motor. 3. Power adjustment button is closed due to vibration.	1. Check the air flow, and clear the block. 2. Clean the motor. 3. Replace the adjustment button. If the problem persists, send tool for servicing or return it to the store.
Tool stops working. Air flows freely from exhaust.	1. Motor blades are jammed or worn. 2. Motor rotor is stuck due to rusting.	1. Oil the inlet. Pull the trigger several times. Adjust the reverse button. 2. Tap motor housing gently with wooden mallet. If the problem persists, send tool for servicing or return it to the store.
Tool does not shut off.	Valve sealing ring was worn or deviated.	Replace O-rings. Lubricate the trigger. If the problem persists, send tool for servicing or return it to the store.

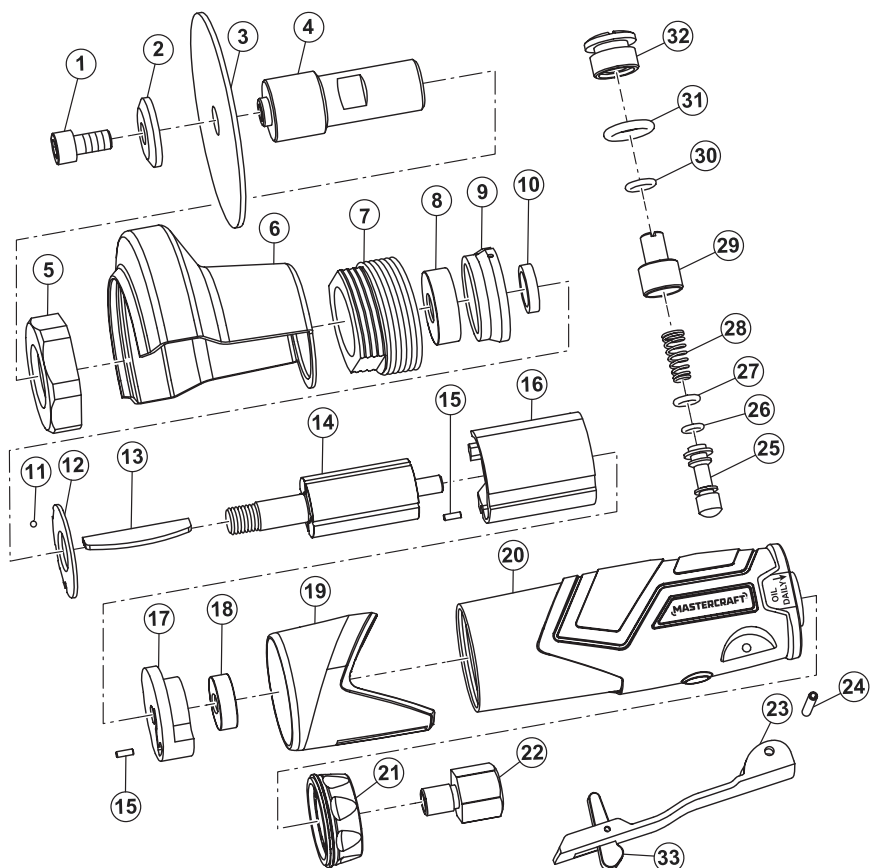
Note: For further repair information, please call 1-800-689-9928.



WARNING!

Potential hazard that could result in serious injury or loss of life.

- If any of the following symptoms appears while the tool is in use, turn it off and disconnect it from the air supply immediately. Failure to heed this warning will result in serious personal injury.
- Disconnect the tool from the air supply before making any adjustments.
- Repairs must be performed by a qualified service technician only.



No.	Description	Qty.	No.	Description	Qty.
1	Bolt M6 x 12	1	18	Bearing	1
2	Washer	1	19	Front cover	1
3	Cutting disc	1	20	Gun body	1
4	Fixed seat	1	21	Muffle cover	1
5	Front grip	1	22	Air inlet plug	1
6	Shielding casing	1	23	Trigger	1
7	Retainer ring	1	24	Pin 3 x 24	1
8	Bearing	1	25	Valve stem	1
9	Front plate	1	26	O-ring 4.8 x 1.6	1
10	Bushing	1	27	O-ring 5.6 x 2	1
11	Steel ball	1	28	Valve spring	1
12	Washer	1	29	Air regulator	1
13	Rotor blade	1	30	O-ring 7 x 2	1
14	Rotor	1	31	O-ring 12 x 3	1
15	Pin 2 x 6	2	32	Screw cap	1
16	Cylinder	1	33	Safety lock	1
17	Back plate	1			

If any parts are missing or damaged, or if you have any questions, please call 1-800-689-9928.

3-Year Limited Warranty

This product is guaranteed for a period of three (3) years from the date of original retail purchase against defects in workmanship and materials, except for the following component:

Component A: Accessories, which are guaranteed for a period of one (1) year from the date of original retail purchase against defects in workmanship and materials.

Subject to the conditions and limitations described below, this product, if returned to us with proof of purchase within the stated warranty period and if covered under this warranty, will be repaired or replaced (with the same model, or one of equal value or specification), at our option. We will bear the cost of any repair or replacement and any costs of labour relating thereto.

These warranties are subject to the following conditions and limitations:

- a) A bill of sale verifying the purchase and purchase date must be provided.
- b) This warranty will not apply to any product or part thereof which is worn or broken or which has become inoperative due to abuse, misuse, accidental damage, neglect, or lack of proper installation, operation, or maintenance (as outlined in the applicable instruction manual or operating instructions), or which is being used for industrial, professional, commercial, or rental purposes.
- c) This warranty will not apply to normal wear and tear or to expendable parts or accessories that may be supplied with the product which are expected to become inoperative or unusable after a reasonable period of use.
- d) This warranty will not apply to routine maintenance and consumable items such as, but not limited to, fuel, lubricants, vacuum bags, blades, belts, sandpaper, bits, fluids, tune-ups, or adjustments.
- e) This warranty will not apply where damage is caused by repairs made or attempted by others (i.e., persons not authorized by the manufacturer).
- f) This warranty will not apply to any product that was sold to the original purchaser as a reconditioned or refurbished product (unless otherwise specified in writing).

- g) This warranty will not apply to any product or part thereof if any part from another manufacturer is installed therein or any repairs or alterations have been made or attempted by unauthorized persons.
- h) This warranty will not apply to normal deterioration of the exterior finish, such as, but not limited to, scratches, dents, paint chips, or to any corrosion or discolouring by heat, or abrasives and chemical cleaners.
- i) This warranty will not apply to component parts sold by and identified as the product of another company, which shall be covered under the product manufacturer's warranty, if any.

Additional limitations

This warranty applies only to the original purchaser and may not be transferred. Neither the retailer nor the manufacturer shall be liable for any other expense, loss or damage, including, without limitation, any indirect, incidental, consequential, or exemplary damages arising in connection with the sale, use, or inability to use this product.

Notice to consumer

This warranty gives you specific legal rights, and you may have other rights, which may vary from province to province. The provisions contained in this warranty are not intended to limit, modify, take away from, disclaim, or exclude any statutory warranties set forth in any applicable provincial or federal legislation.

Made in China

Imported by Mastercraft Canada Toronto, Canada M4S 2B8