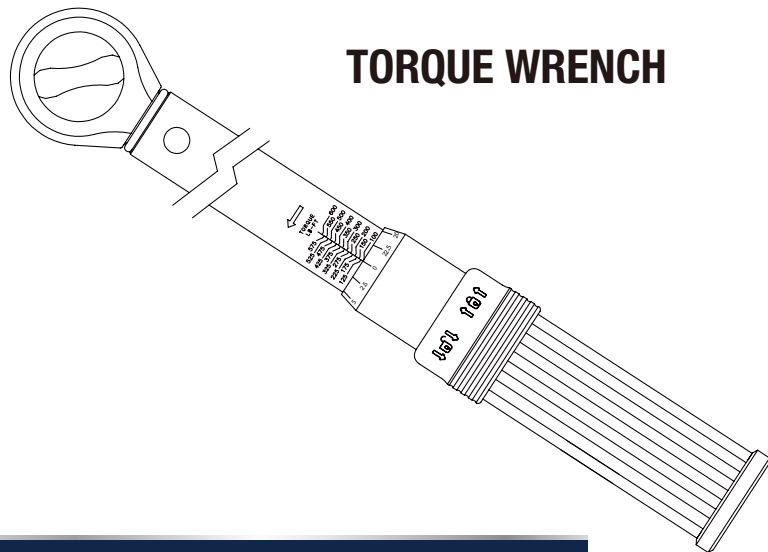


model no. 058-0338-2

MASTERCRAFT™



TORQUE WRENCH

IMPORTANT: Before using your Mastercraft® torque wrench, read and understand this owner's guide.

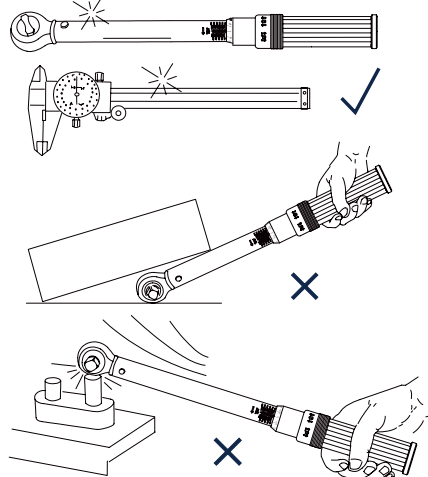
INSTRUCTION MANUAL

2

model no. 058-0338-2 | contact us 1-800-689-9928

READ BEFORE YOU USE

- This torque wrench is a precision instrument intended to be used only to tighten screws, bolts and nuts to a desired torque. Do not use it as a "nut breaker", pry bar, or in lieu of a regular ratchet wrench.
- Do not apply torque in excess of the maximum capacity of the wrench.
- Apply load to the grip only, and do not use any handle extension bars. Any such misuse will result in inaccurate readings, and it may damage the wrench.
- Make sure that you adjust the wrench to the exact torque units your specifications call for, or you will severely under-torque or over-torque, causing severe damage to the equipment you are working on.
- Do not disassemble the wrench for any reason. Highly stressed internal components may cause severe injury when released in an unintended manner.
- The wrench should be re-calibrated periodically. The calibration of the wrench should be checked after any abnormal handling or overloading, or after 5,000 cycles ("clicks").



SAVE THESE INSTRUCTIONS

This manual contains important operating instructions. Read all instructions and follow them with use of this product.

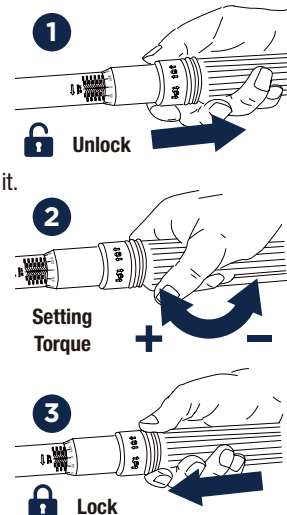
3

MASTERCRAFT™

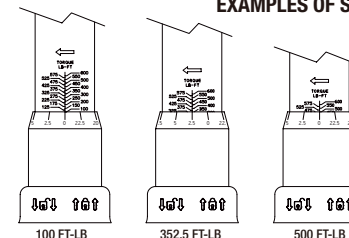
SETTING TORQUE

- Pull the lock knob down over the grip. The locking and unlocking directions are indicated by appropriate icons on the lock knob.
- Turn the grip clockwise direction to increase the torque, and counter-clockwise to decrease it.

The major scales show the amount of torque in coarse increments. The minor scale shows fine increments. Add both scales for your setting. See examples below. (Reference scale below shows the setting in coarse increments in secondary torque units.)
- Push the lock knob back to lock the grip. The minor scale may move a small amount to either side of the centre line mark without affecting the accuracy of your setting.



EXAMPLES OF SETTING 600 FT-LB WRENCH



STORAGE

- When stored or not in use, the wrench should be set to 20% of the maximum capacity (120 ft-lb for 3/4" drive).

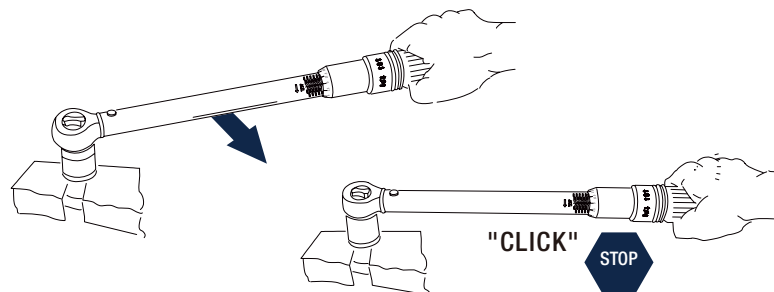
4

model no. 058-0338-2 | contact us 1-800-689-9928

OPERATING INSTRUCTIONS

APPLYING TORQUE

- Insert an appropriate socket or drive attachment onto the square drive of the ratchet and onto the fastener you want to tighten.
- Apply hand pressure to the grip, and **ONLY TO THE GRIP**. You may support the wrench at the ratchet head with the other hand to steady it, especially when using long socket extensions, without appreciably affecting the accuracy of the wrench.
- If, due to the required effort, you need to use both hands, put the other hand on top of the first hand, never on any other part of the wrench.
- Apply slow and steady pull or push until the wrench momentarily releases, with or without a distinct "click" sound. Release the pressure right at this point. **DO NOT OVER-TORQUE!**



REVERSING DIRECTION

- Hold drive tang or socket attached to drive tang with one hand. With the other hand, turn the dial on top of the ratchet head clockwise or counter-clockwise depending on the desired ratchet direction. Unless stated otherwise, this ratchet is calibrated in clockwise direction only.

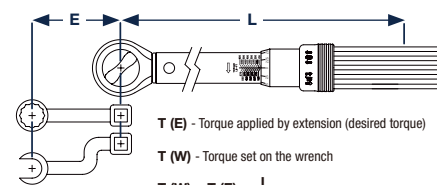
5

MASTERCRAFT™

OPERATING INSTRUCTIONS

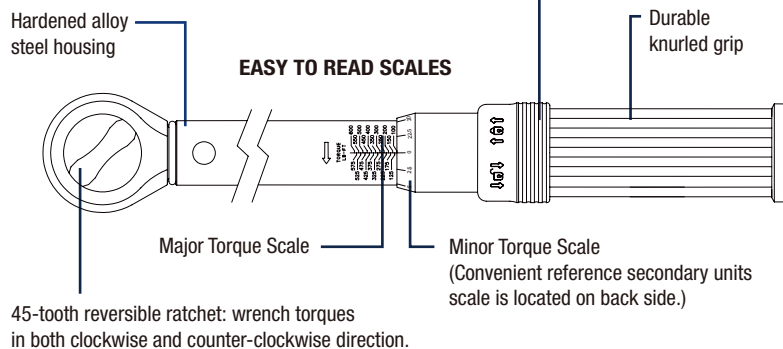
USE OF EXTENSIONS

- Extensions that put the centre of the fastener being tightened away from the centre line of the ratchet drive result in the effective torque being different from the one shown on the wrench. Consequently, the torque set on the wrench must be corrected using the formula shown on the below.



Torque wrench indicates when the preset torque has been reached by releasing for a few degrees of free travel, which is usually accompanied by an audible "click" signal.

Pull/Push style lock knob secures selected torque from accidental change.



6

model no. 058-0338-2 | contact us 1-800-689-9928

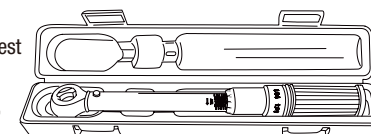
WARRANTY INFORMATION

SAFETY WARNING

- Over-torqued or defective fasteners, sockets, as well as the wrench itself, may suddenly break causing you to lose balance, fall, or to suffer other trauma. Be sure that you have firm footing, are properly balanced, and if necessary are using appropriate harness, back support, or other safety device.

MAINTENANCE

- When not in use, adjust the wrench to its lowest reading and store it in the provided case.
- With the exception of the ratchet mechanism, do not lubricate the wrench. The ratchet mechanism may be lubricated as needed with a few drops of light machine oil.
- Do not use acetone or other solvents to clean the wrench; use window cleaner or denatured alcohol applied with a clean cloth instead.
- With the exception of the ratchet mechanism, there are no user-serviceable parts. Do not disassemble the torque wrench for any reason. When service is needed, send the wrench to the nearest factory-authorized service centre.



CERTIFICATION

- This torque wrench is certified to have been calibrated prior to shipment to the accuracy of +/- 4% in the clockwise direction.

WARRANTY

This Mastercraft product carries a one-year warranty against defects in workmanship and materials. This product is not guaranteed against wear or breakage due to misuse and/or abuse.

Made in China
Imported by Mastercraft Canada Toronto, Canada M4S 2B8