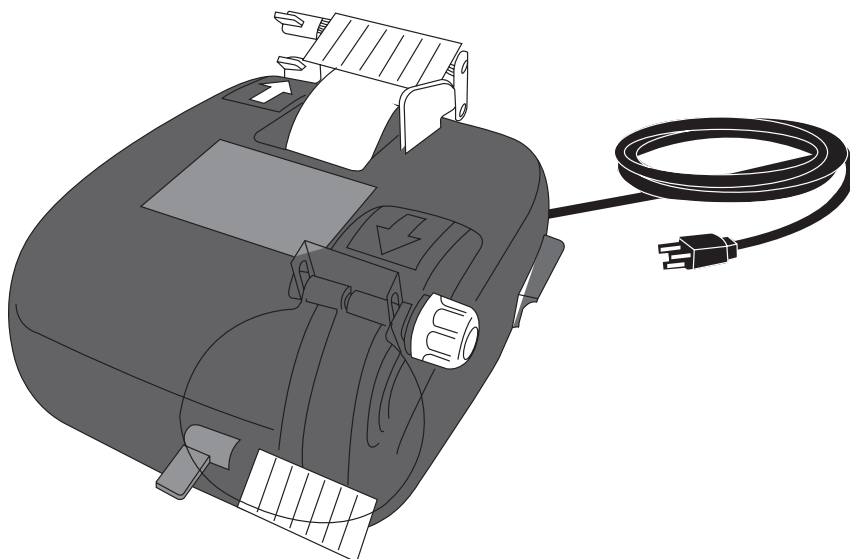


model no.: 055-3505-2

Mastercraft™

WET/DRY SHARPENER



IMPORTANT:

Please read this manual carefully before using this wet/dry sharpener and save it for reference

**INSTRUCTION
MANUAL**

SECTION	
SPECIFICATIONS	4
SAFETY GUIDELINES	5
DIAGRAM AND LOCATION OF PARTS	10
ASSEMBLY AND ADJUSTMENTS	11
OPERATING INSTRUCTIONS	14
MAINTENANCE	16
PARTS LIST	19
EXPLODED VIEW	20
WARRANTY	21

NOTE:

If any parts are missing or damaged, or if you have any questions, please call our toll-free helpline at 1-800-689-9928.



SAVE THESE INSTRUCTIONS

This manual contains important safety and operating instructions. Read all instructions and follow them when using this product.

SPECIFICATIONS

MODEL NUMBER	055-3505-2
MOTOR	120 V AC, 60 Hz, 0.8 A
WET WHEEL	
Speed	170 RPM (no load)
Size	4 x 2" (10.2 x 5.1 cm), 220 grit
DRY WHEEL	
Speed	1,750 RPM (no load)
Size	4 1/2 x 3/4" (11.4 x 1.9 cm), 36 grit
ARBOUR SIZE	1/2" (1.27 cm)
WEIGHT	12 lb (5.4 kg)

Safety is a combination of common sense , staying alert, and knowing how the wet/dry sharpener works.

1. **READ** this entire Instruction Manual and become familiar with the information that it contains . Learn the applications,limitations, and possible hazards associated with wet/dry sharpener.
2. **AVOID DANGEROUS CONDITIONS. DO NOT** use power tools in wet or damp areas, and **DO NOT** expose them to rain. Keep the work area well lit.
3. **DO NOT** use power tools in the presence of flammable liquids or gases.
4. **ALWAYS** keep your work area clean, uncluttered, and well-lit. **DO NOT** work on a floor surface that is slippery from sawdust or wax.
5. **KEEP BYSTANDERS AT A SAFE DISTANCE FROM** the work area, especially when the tool is in use. Do not allow children or pets near the wet/dry sharpener.
6. **DO NOT FORCE THE TOOL** to do a job that it was not designed to do.
7. **DRESS FOR SAFETY. DO NOT** wear loose clothing, gloves, neckties, or jewellery (rings, watches, etc.) when operating the tool. Loose clothing and other items can get caught in moving parts and draw the operator in. **Wear** non-slip footwear, and tie back long hair.
8. **WEAR A FACE MASK OR DUST MASK**, because the sharpening operation produce dust.
9. **UNPLUG** the power cord plug from the electrical outlet when making adjustments, changing parts, cleaning, or working on the tool.
10. **KEEP ALL GUARDS IN PLACE AND IN WORKING ORDER.**
11. **AVOID ACCIDENTAL START-UPS.** Verify that power switch is in the **OFF** position before plugging in the power cord.
12. **DO NOT OVERREACH.** Keep proper footing and balance at all times. Wear oil-resistant, rubber-soled footwear. Keep the floor clear of oil,scraps, and other debris.
13. **MAINTAIN TOOLS PROPERLY. ALWAYS** keep tools clean and in good working order. Follow instructions for lubricating and changing accessories.



WARNING!

In order to avoid mistakes that could cause serious injury, read the following steps carefully and understand them thoroughly before plugging in the wet/dry sharpener.

- 14. **CHECK FOR DAMAGED PARTS.** Check for misalignment, jamming, breakage and improper mounting of moving parts, and for any other conditions that may affect the operation of the tool. Repair or replace any part that is damaged before using the wet/dry sharpener.
- 15. **DO NOT** operate the tool when under the influence of drugs, alcohol or medication that may affect your ability to use the tool properly.



ALWAYS WEAR EYE PROTECTION THAT CONFORMS WITH CSA REQUIREMENTS.

FLYING DEBRIS can cause permanent eye damage. Prescription eyeglasses are not an adequate substitute for proper eye protection.



WARNING!

Dust generated from certain materials can be hazardous to the health. Operate the sharpener in a well-ventilated area, and ensure that proper dust removal is provided. Wear a face mask or a dust mask when operating the sharpener.



WARNING!

Exposure to excessive noise levels can result in permanent hearing loss. Wear ear protection (safety ear muffs or ear plugs) in order to reduce the noise level while operating the sharpener.

- 1. Inspect the sharpening wheels before operating. Do not use a cracked or chipped sharpening wheel, or one that vibrates.
- 2. Use the tool rests and the eye shield that are provided with the wet/dry sharpener. Verify that the tool rests and eye shield are adjusted and tightened properly before using the sharpener.
- 3. Unplug the sharpener before doing any adjustments or adding water.
- 4. Do not stand in front of the sharpener when starting it. There is always a possibility that a piece from a damaged grinding wheel may be thrown off. Do not use the sharpener until it is operating at full speed.
- 5. Sharpen objects using the face of the wheel only, and never using the side of the wheel.
- 6. Do not sharpen objects near flammable gas or fluids, because the sparks produced by the wheel may ignite gas or fluids.
- 7. Grinding and sharpening produces heat. Do not touch the workpiece until it has cooled down completely.
- 8. Position the hands so that they will not come into contact with sharpening wheels in the event of a slip. Keep thumbs and fingers away from the wheel.
- 9. The diameter of a grinding wheel decreases with use. Maintain a 1/16" (1.6 mm) distance between the wheel and the tool rest. Readjust the tool rest as the wheel decreases in size. Make sure the tool rest is properly adjusted so that it will not move while in use.
- 10. Do not exert excessive pressure on the sharpening wheel. The sharpener will do a better job and will be safer if it is used at the speed that it was designed to work at.
- 11. Always place the sharpener on a flat, stable surface. The surface should also be water-repellent, in the event of accidental spillage.



WARNING!

Do not operate the wet/dry sharpener until it is assembled completely and the following instructions and the warning labels on the sharpener have been read carefully and understood fully.

GROUNDING INSTRUCTIONS

IN THE EVENT OF A MALFUNCTION OR BREAKDOWN, grounding provides the path of least resistance for electric current, in order to reduce the risk of the electric shock. This tool is equipped with an electric cord that has an equipment grounding conductor and a grounding plug. The plug **MUST** be plugged into a corresponding outlet that is properly installed and grounded, in accordance with **ALL** local codes and ordinances.

DO NOT ALTER THE PLUG. If it does not fit into the outlet, have the proper type of outlet installed by a licenced electrician.

IMPROPER CONNECTION of the equipment grounding conductor can result in a risk of electric shock. The conductor with the green insulation (with or without yellow stripes) is the equipment grounding conductor. If it is necessary to repair or replace the power cord or plug, do not connect the equipment grounding conductor to a live terminal.

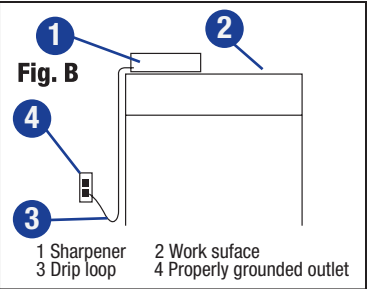
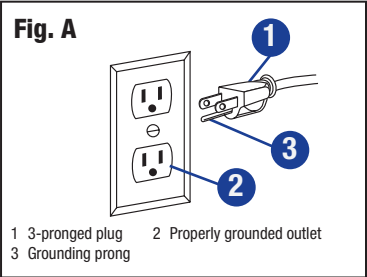
CONSULT a licensed electrician if these grounding instructions are not completely understood, or if there is any doubt about whether the tool is grounded properly.

USE ONLY A THREE-WIRE EXTENSION CORD that is equipped with a 3-pronged plug and plug it into an outlet that can accept the plug on the tool's power cord, as shown in **Fig. A**. Repair or replace a damaged or worn cord or an extension cord immediately.

Use a “drip loop” in the power cord in order to keep the power cord plug and the outlet dry. A drip loop is a part of the cord that is below the level of the outlet, or before and below the level of the connection, if an extension cord is used.

To create a drip loop, allow for a sufficient amount of slack in the power cord so that the power cord sags between the outlet and the wet/dry sharpener.

If an extension cord is being used, raise the connector using a chair or a box or another method in order to ensure that cord is not touching the floor. If the plug or outlet gets wet, do not touch the power cord. Disconnect the fuse or the circuit breaker that supplies power to the sharpener, and then unplug the cord and examine it for the presence of water.



CAUTION!

ALWAYS VERIFY that the outlet that is used is properly grounded. If there is any doubt, have it inspected by a licensed electrician.



WARNING!

This wet/dry sharpener is intended for indoor use only. Do not expose to rain or use it in a damp location.

GUIDELINES FOR USING EXTENSION CORDS

Verify that the extension cord is in good condition. When using an extension cord, be sure to use one that is heavy enough to carry the current that the tool will draw. Using an undersized cord will cause a drop in line voltage, which will result in a loss of power and overheating. The table below shows the correct size to use, according to cord length of the extension cord and the nameplate amperage rating. When in doubt, use the next heavier gauge. The smaller the gauge number, the heavier the cord.

MINIMUM GAUGE FOR EXTENSION CORDS (AWG) (120 V Circuits Only)

Amperage Rating		Total length of cord in feet (meters)			
More than	Not more than	25' (7.62 m)	50' (15.24 m)	100' (30.48 m)	150' (45.72 m)
0	6	18	16	16	14
6	10	18	16	14	12
10	12	16	16	14	12
12	16	14	12	Not recommended	

Verify that the extension cord is properly wired and in good condition. Replace a damaged extension cord or have it repaired by a qualified person before using it. Keep extension cords away from sharp objects, excessive heat, and damp or wet areas.

Use a separate electrical circuit for operating power tools. This circuit should consist of not less than a #12 wire, and should be protected by a 15 A time-delayed fuse. Before plugging the sharpener into the electrical outlet, verify that the switch is in the **OFF** position and that the electric current is rated the same as the current that is stamped on the motor nameplate. Running the sharpener at a lower voltage will damage the motor.



WARNING!

In order to protect the operator from electric shock, this tool must be grounded while in use.

No.	Description	No.	Description
A	Spark deflector	F	Wet wheel tool rest
B	Eye shield	G	ON/OFF switch
C	Upper and lower wet wheel tool rest handles	H	Eye shield knob
D	Wet wheel	I	Dry wheel
E	Angle gauge	J	Dry wheel tool rest
		K	Dry wheel tool rest handle

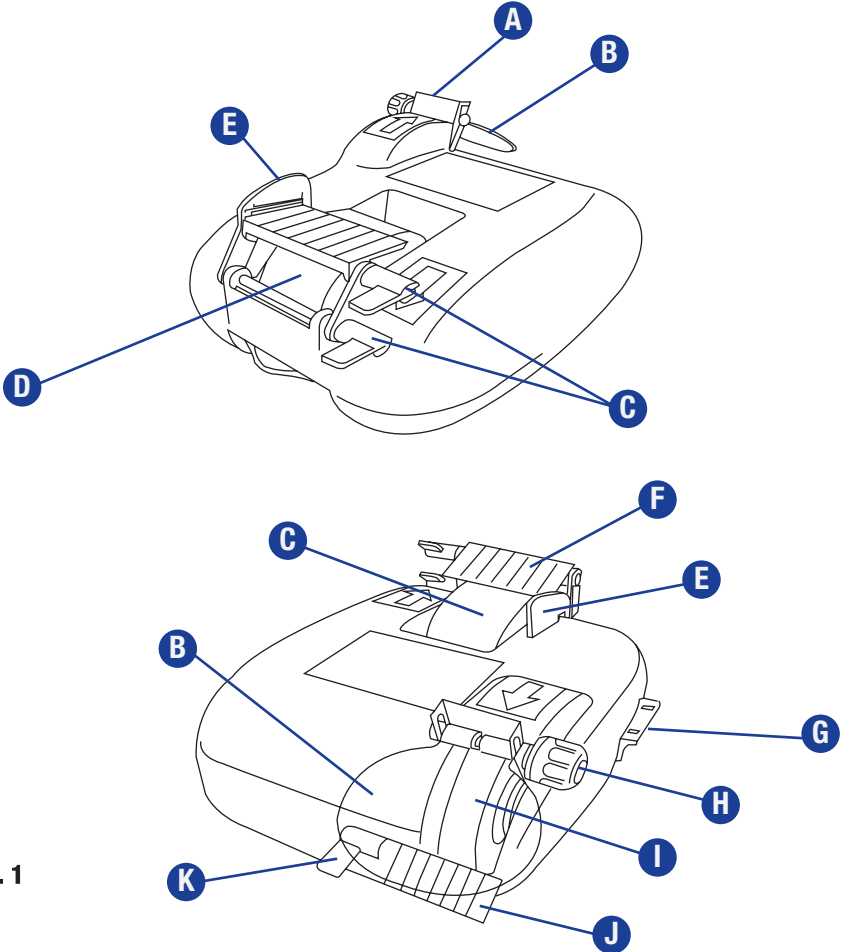


Fig. 1

The wet/dry sharpener requires some assembly. For safety reasons, the sharpener must be assembled completely before it is plugged in.

Installing the wet wheel tool rest assembly (Fig. 2)

The wet wheel tool rest can be used to support the item that is being sharpened.

Follow these steps to install the wet wheel tool rest:

1. Remove the lower handle (1), the bolt (2), and the washers from the wet wheel tool rest assembly.
2. Insert the tooth of the geared washer (3) into the slot on the lower support (5).
3. Position the tool rest brackets (4) over the openings in the lower supports, and then insert the bolt (2) through the brackets, the lower supports (5) and the geared washer (3).
4. Place the flat washer (6) and the handle (1) over the bolt. Tighten the handle in order to secure the tool rest assembly in place.

Adjusting the wet wheel tool rest (Fig. 3)

1. Turn the upper (1) and lower handles (2) counter-clockwise in order to loosen the tool rest assembly.
2. Set the tool rest (3) at the desired position, and tighten the lower handle (2).
3. Set the metal tool rest (3) at the desired angle, and tighten the upper handle (1). Maintain a distance of approximately 1/16 inch (1.6mm) between the wet wheel and the tool rest.

Fig. 2

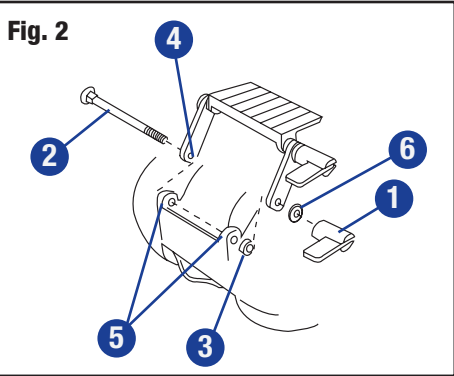


Fig. 3

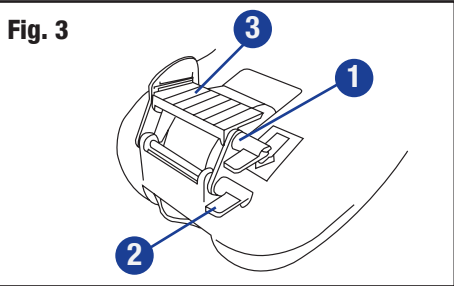
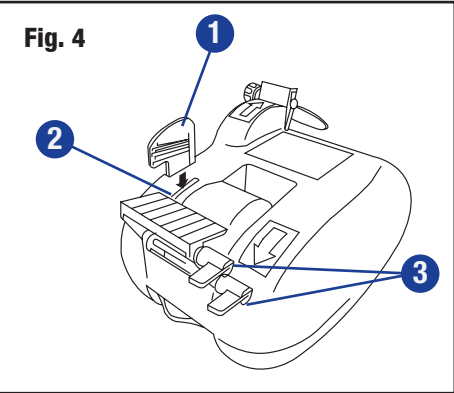


Fig. 4

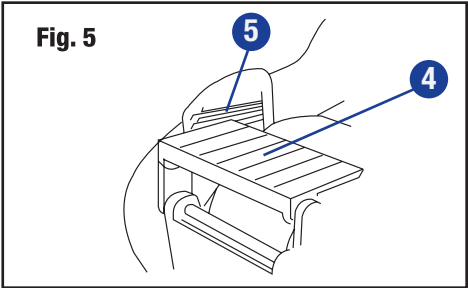


WARNING!

If any part is missing or damaged, do not plug in the wet/dry sharpener until the missing or damaged part is replaced.

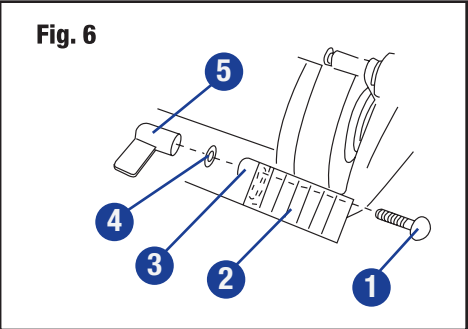
Setting the tool rest at a specific angle (Fig. 4 and 5)

1. Insert the angle gauge (1) into the slot (2) next to the wet wheel.
2. Loosen the tool rest handles (3), and align the tool rest (4) with the desired angle line (5) on the gauge.
3. Tighten the tool rest handles (3).
4. Make sure there is a distance of approximately 1/16" (1.6 mm) between the wet wheel and the tool rest.



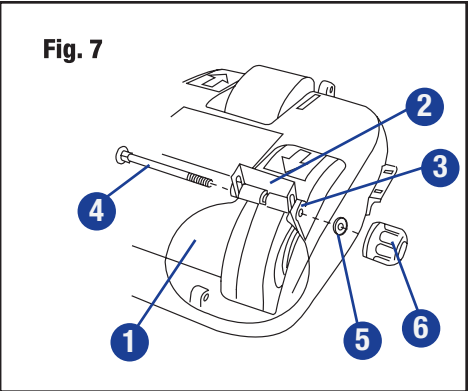
Installing the dry wheel tool rest (Fig. 6)

1. Insert the bolt (1) through the L-shaped metal bracket (2) and through the dry wheel tool rest support (3) at the front of the sharpener. The metal bracket should be in front of the dry wheel.
2. Place the washer (4) and the handle (5) over the bolt, and turn the handle clockwise in order to tighten it.



Installing the dry wheel eye shield (Fig. 7)

1. Place the coiled portion of the plastic eye shield (1) into the spark deflector (2).
2. Position the spark deflector with the plastic eye shield between the right and left supports (3).
3. Insert the bolt (4) through the supports, the spark deflector, and the eye shield.
4. Place the washer (5) and the knob (6) on the bolt, and tighten the knob in order to secure the shield.



Adjusting the dry wheel tool rest and eye shield (Fig. 8)

1. Turn the dry wheel tool rest handle (1) counterclockwise in order to loosen it.
2. Move the metal tool rest (2) to the desired position. Maintain a distance of approximately 1/16" (1.6 mm) between the wheel and the tool rest.
3. Turn the tool rest knob (1) clockwise in order to tighten it and secure the tool rest in place.
4. Turn the eye shield knob (3) counterclockwise in order to loosen it. Move the eye shield (4) to the desired position, and tighten the eye shield knob.

Water reservoir

The wet sharpening stone absorbs water during use. This helps to prevent heat build-up that can dull hardened steel edges. Check the water level periodically, and refill the reservoir with regular tap water as needed.

Filling the water reservoir (Fig. 9)

1. Using a measuring cup, slowly and carefully pour approximately 3 oz (90 ml) of water into the reservoir (1). The water level should be below the drain lip (2).
2. Turn the sharpener on for approximately 30 seconds in order to allow the sharpening wheel to absorb water from reservoir.

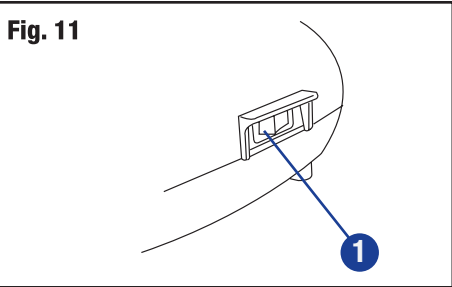
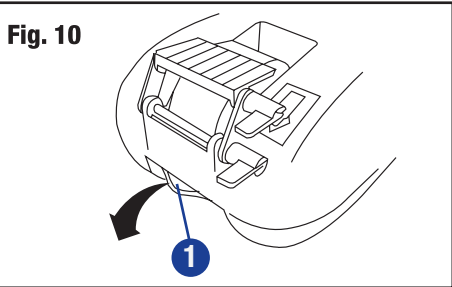
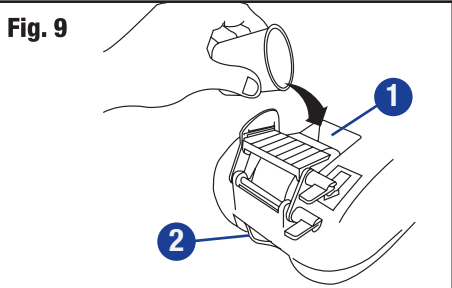
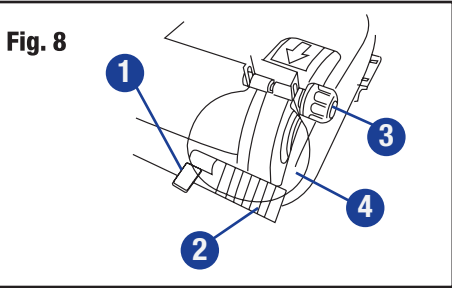
Draining the water reservoir (Fig. 10)

1. Turn the sharpener off, and unplug the power cord.
2. Lift the sharpener up and tip it in order to pour water out of the reservoir through the water drain lip (1).

ON/OFF switch (Fig. 11)

Press the switch (1) to the "ON" position (1) in order to start the wet/dry sharpener. Before using the sharpener, allow the wheels to turn for a few seconds in order to reach full speed.

Press the ON/OFF switch to the "OFF" position (0) in order to stop the wet/dry sharpener.



NOTE:

If your tap water is "hard", use distilled water to fill the reservoir.

NOTE:

Do not overfill. Excess water will overflow from the drain lip.

Sharpening (Fig. 12 and 13)

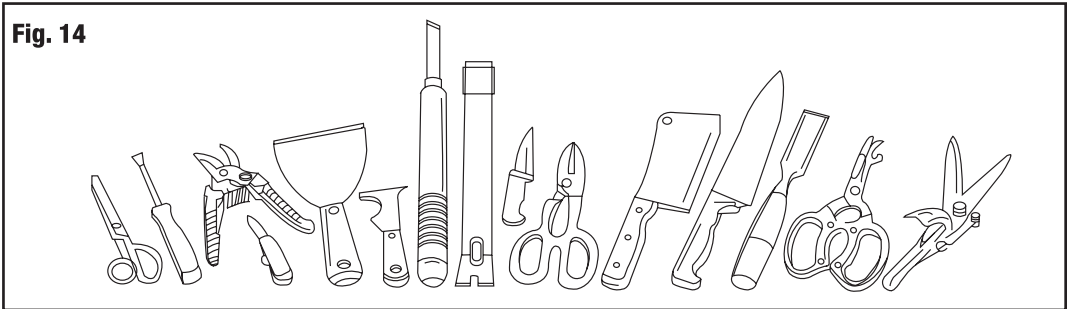
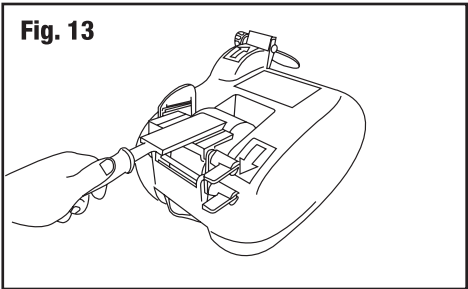
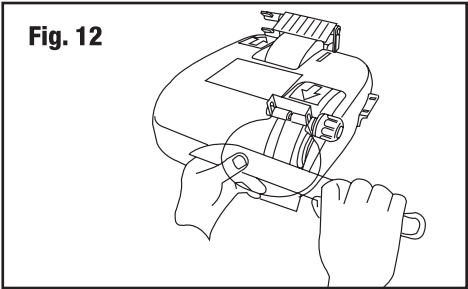
- Place the wet/dry sharpener on a flat, stable, and water-repellent surface.
- Verify that the eye shield is in the proper position to protect the operator from flying debris.
- Allow the sharpener to reach full speed before using it.
- For dry sharpening, operate the sharpener from the front.
- For wet sharpening, operate the sharpener from the back.
- Align the item to be sharpened with the parallel lines on the tool rest in order to ensure that the edge is perpendicular to the wheel.

When using the dry wheel to sharpen an item (Fig.12), stabilize the item on the dry wheel tool rest.

When using the wet wheel to sharpen an item (Fig.13), stabilize the item on the wet wheel tool rest. Use the angle gauge in order to adjust the angle of the wet wheel tool rest before turning the sharpener on.

Sharpening guidelines

Dull tools are hard to use, inefficient, potentially dangerous, and short-lived. Cutting edges should be sharpened regularly in order to maintain the optimum bevel, as designed by the manufacturer. Dull blades



tend to lose their edge through overwork. Once the original edge is gone, the blade can no longer produce the same quality results that it was designed for. Regular sharpening dresses and maintains the edge.

It is not difficult to put a good, sharp edge on tools and blades, but a certain amount of practice may be required. The more the wet /dry sharpener is used, the easier it becomes to obtain a good, sharp edge.

Keep these basic guidelines in mind as sharpening skills are developed:

- Think safety; always use common sense when sharpening any blade. Do not place the hands in the path of the blade. Hold the item that is being sharpened firmly. Always work in a well-lit area.
- Sharpen using many small passes. This is more efficient than trying a few powerful strokes, and it is easier to gauge progress.
- Sharpen a tool before using it rather than halfway through a project, when there is a temptation to finish the sharpening quickly, and not do a thorough job.
- The sharper the edge, the crisper the cut. However, a sharper edge, will get dull faster. The edge on any blade is always a compromise between durability and sharpness.
- It is a good idea to closely inspect tools when they are being sharpened. Discard any blade that has a bent or cracked edge.



WARNING!

Wear safety goggles and verify that the eye shield is secure and properly positioned before using the sharpener.



WARNING!

In order to avoid injury from unexpected start-up or electric shock,unplug the power cord from the outlet before performing inspection or maintenance. Do not use a damaged tool.



WARNING!

In order to reduce the risk of injury, electric shock, and damage to the sharpener, do not immerse the sharpener in liquid or allow liquid to get inside the motor housing.

Lubrication

Mastercraft® tools are properly lubricated at the factory, and are ready to use. If abnormal noise or vibration occurs, turn the sharpener off immediately, and correct the problem before further use.

General maintenance

Before each use, examine the general condition of the sharpener, the switch, the power cord, and the extension cord. Check for loose screws, jamming, improper mounting, broken parts, and any other condition that may affect the safe operation of the wet/dry sharpener. Do not operate the sharpener if a sharpening wheel is chipped or damaged. Do not use a damaged sharpener.

Cleaning

Empty the water from the water reservoir after each use, and before storing the wet/dry sharpener.

Use a dry, clean rag to clean and dry all areas of the wet/dry sharpener. Do not use solvents or other harsh chemicals for cleaning, because they are harmful to plastic and other insulated parts. Petroleum-based products, brake fluid, thinners and ammonia-based detergents are also harmful.

Reshaping the dry wheel (Fig.15)

With use, abrasive sharpening wheels get dull, worn and lose their shape. A misshapen wheel will not grind or sharpen properly. The proper use of a dressing wheel can extend the life of the dry wheel.

1. Verify that the dry wheel tool rest is properly adjusted, and that there is a distance of approximately 1/16" (1.6 mm) between the tool rest and the dry wheel. Verify that the eye shield is properly positioned.
2. Place the dressing wheel (1) on the tool rest (2) but do not allow it to touch the dry wheel.
3. Turn the sharpener on and allow it to run for approximately 1 minute.
4. Move the dressing wheel forward slowly until it touches the highest point on the face of the wheel.
5. Dress the wheel by slowly moving the dressing wheel from side to side on the tool rest. Continue to move the dressing wheel over the face of the dry wheel until the surface of the dry wheel is clean and smooth, the edges are square, and the dry wheel is round.

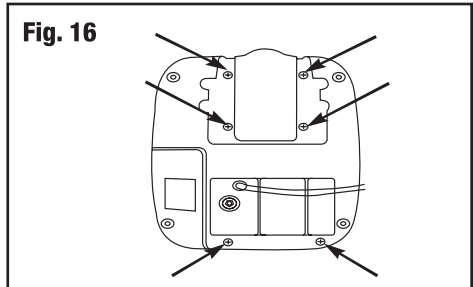
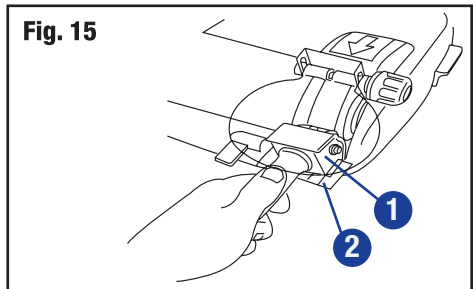


Fig. 15

Fig. 16

NOTE:

After reshaping the wheel, and before using the sharpener, re-adjust the tool rest so that there is a distance of approximately 1/16" (1.6 mm) between the tool rest and the dry wheel, and position the eye shield properly.

Changing the dry wheel (Fig. 16-18)

1. Unplug the sharpener from the power source.
2. Move the tool rests and the eye shield to their lowest positions.
3. Turn the sharpener over, and place it on a stable work surface.
4. Remove the six screws (Fig. 16) that hold the cover to the housing.
5. Place the sharpener upright on the work surface. Lift the cover off.
6. Apply pressure to the two plastic clips that hold the dry wheel compartment (1) to the housing (2), and slide the compartment down and away from the housing.
7. Place the wrench (included) (4) on the motor shaft, and then place another wrench (not included) (5) on the large nut (6) that is located at the wheel end of the shaft.
8. Loosen and remove the large nut (6) by turning it counterclockwise while holding the motor shaft steady with the small wrench.
9. Remove the outer flange (7) and dry wheel (3) from the motor shaft.
10. Place a new dry wheel on the motor shaft, replace the flange and the nut, and tighten the nut.
11. Put the dry wheel compartment back in place. Verify that the clips hold it securely to the housing.
12. Put the cover on the housing, turn the sharpener over, and re-install the six screws.

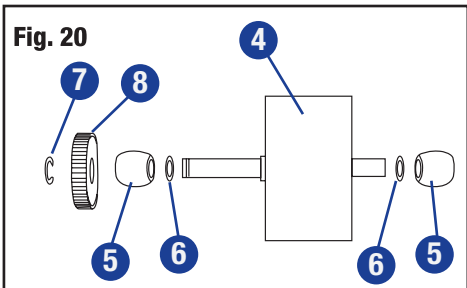
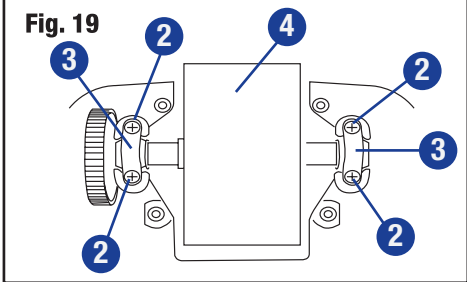
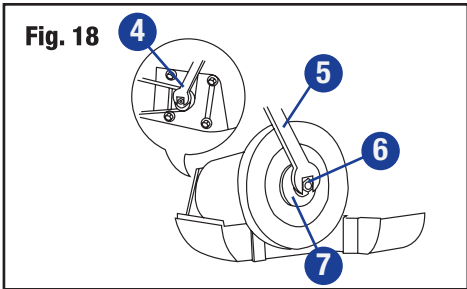
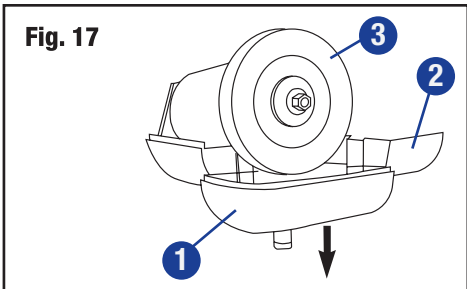


Fig. 17

Fig. 18

Fig. 19

Fig. 20

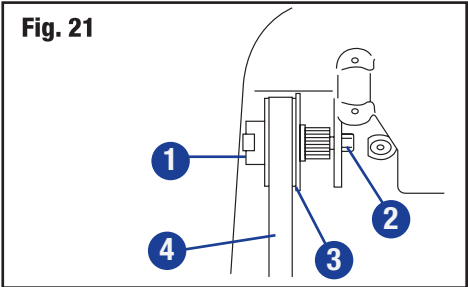
Changing the wet wheel (Fig.16, 19 and 20)

1. Unplug the sharpener from the power source.
2. Move the tool rests and the eye shield to their lowest positions.
3. Turn the sharpener over, and place it on a stable work surface.
4. Remove the six screws (Fig. 16) that hold the cover to the housing.
5. Place the sharpener upright on the work surface and lift the cover off.

- 6. Remove the four screws (2) that secure the two brackets (3). Remove the brackets.
- 7. Lift the wet wheel assembly (4) out of the housing.
- 8. Remove the brass bushings (5) and washers (6) from the wheel shaft.
- 9. Remove the E-shaped clip (7) from the gear end of the wheel shaft, and slide the gear (8) off the shaft.
- 10. Place the bushings and washers onto the new wheel assembly shaft.
- 11. Place the gear on the shaft, and reinstall the E-shaped clip.
- 12. Position the wet wheel assembly inside the housing. Verify that the gear is positioned properly so that the wheel turns without binding.
- 13. Re-install the two brackets.
- 14. Put the cover back on the housing, turn the sharpener over, and re-install the six screws.

Replacing the belt (Fig.16 and 21)

- 1. Unplug the sharpener from the power source.
- 2. Move the tool rests and the eye shield to the lowest positions.
- 3. Turn the sharpener over, and place it on a stable work surface.
- 4. Remove the 6 screws (Fig. 16) that hold the cover to the housing.
- 5. Place the sharpener upright on the work surface and lift the cover off the housing.
- 6. Loosen and remove the nut (2).
- 7. Remove the bolt, the pulley assembly (3) and the washers. Remove the old belt (4).
- 8. Place a new belt over the small and large pulleys.
- 9. Place the large pulley (3) in position.
- 10. Insert the bolt through the housing, the pulley assembly, and the washers. Before tightening the nut, verify that the gears and both sharpening wheels move freely.
- 11. Put the cover back on the housing, turn the sharpener over, and re-install the six screws.

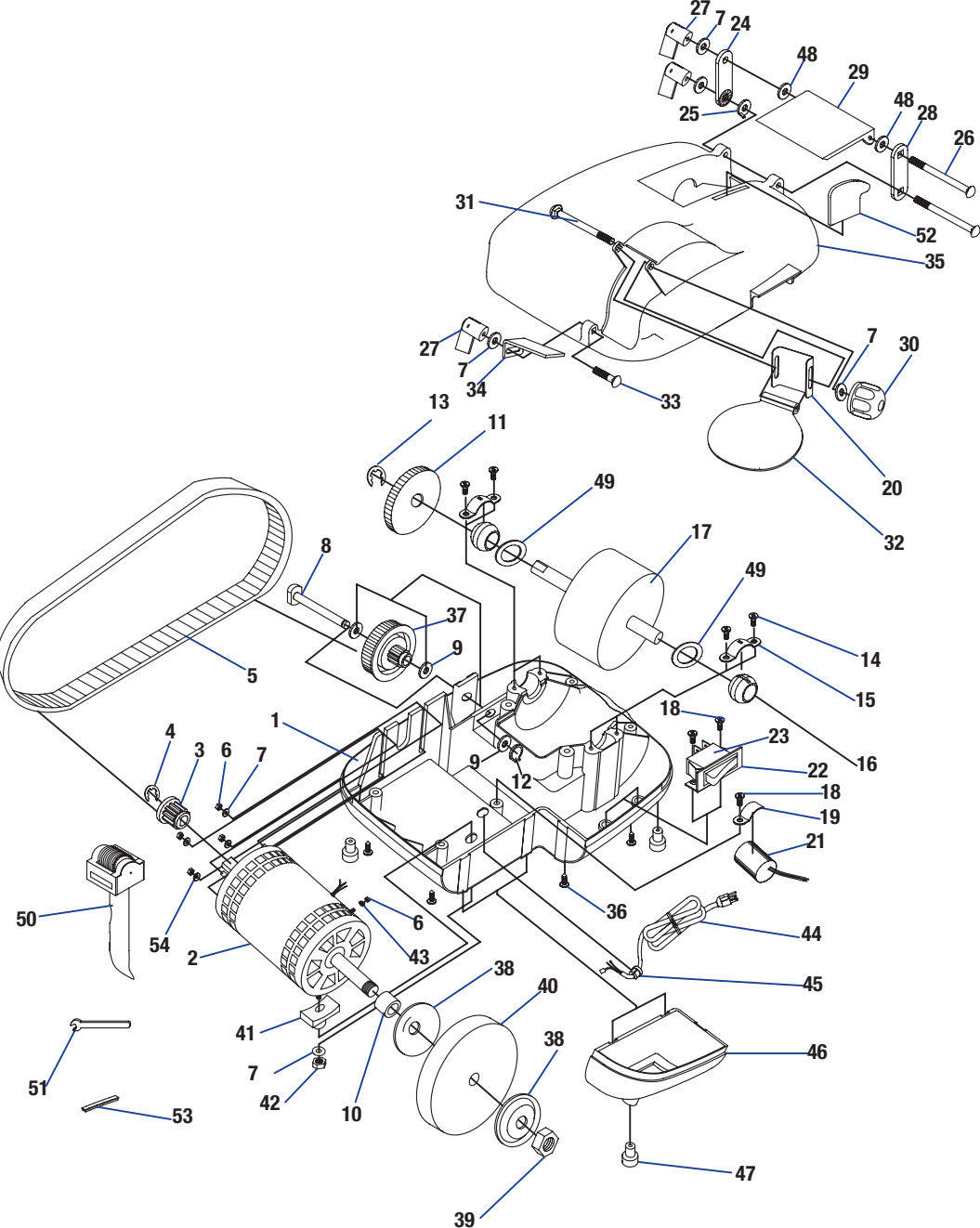


MASTERCRAFT® WET/DRY SHARPENER

When servicing you Mastercraft® Wet/Dry Sharpener, use only Mastercraft® replacement parts. Use of any other parts may damage the product. Servicing of the sharpener should be performed by a qualified service technician. For more information, call the toll-free helpline at 1-800-689-9928.

No.	Description	Qty	No.	Description	Qty
01	Lower housing I	1	28	Left support	1
02	Motor	1	29	Wet wheel tool rest	1
03	Motor gear	1	30	Knob	1
04	E-shaped clip	1	31	Bolt	1
05	Drive belt	1	32	Eye shield	1
06	Nut	5	33	Carriage bolt	1
07	Washer	9	34	Dry wheel tool rest	1
08	Gear bolt	1	35	Upper housing	1
09	Washer	2	36	Screw	6
10	Bushing	1	37	Transfer gear	1
11	Wheel gear	1	38	Wheel flange	2
12	C-ring	1	39	Nut	1
13	E-shaped clip	1	40	Dry grinding wheel	1
14	Screw	6	41	Rubber support	1
15	Bushing clamp	2	42	Nut	1
16	Brass bushing	2	43	Washer	1
17	Wet wheel assembly	1	44	Power cord	1
18	Screw	1	45	Strain relief	1
19	Capacitor holder	1	46	Lower housing II	1
20	Spark deflector	1	47	Foot pads	4
21	Capacitor	1	48	Washer	2
22	Switch plate	1	49	Washer	2
23	Switch	1	50	Dressing wheel	1
24	Right support	1	51	Wrench for dry wheel	1
25	Toothed spacer	1	52	Scale (angle) gauge	1
26	Carriage bolts	2	53	Rubber housing	1
27	Table lock knob	3	54	Washer	1

MASTERCRAFT® WET/DRY SHARPENER



3-Year Limited Warranty

This Mastercraft product is guaranteed for a period of 3 years from the date of original retail purchase against defects in workmanship and materials, except for the following component:

Component A: Accessories, which are guaranteed for a period of 1-year from the date of original retail purchase against defects in workmanship and materials.

Subject to the conditions and limitations described below, this product, if returned to us with proof of purchase within the stated warranty period and if covered under this warranty, will be repaired or replaced (with the same model, or one of equal value or specification), at our option. We will bear the cost of any repair or replacement and any costs of labour relating thereto.

These warranties are subject to the following conditions and limitations:

- a) a bill of sale verifying the purchase and purchase date must be provided;
- b) this warranty will not apply to any product or part thereof which is worn or broken or which has become inoperative due to abuse, misuse, accidental damage, neglect or lack of proper installation, operation or maintenance (as outlined in the applicable owner's manual or operating instructions) or which is being used for industrial, professional, commercial or rental purposes;
- c) this warranty will not apply to normal wear and tear or to expendable parts or accessories that may be supplied with the product that are expected to become inoperative or unusable after a seasonable period of use;
- d) this warranty will not apply to routine maintenance and consumable items such as, but not limited to, fuel, lubricants, vacuum bags, blades, belts, sandpaper, bits, fluids, tune-ups or adjustments;
- e) this warranty will not apply where damage is caused by repairs made or attempted by others (i.e. persons not authorized by the manufacturer);
- f) this warranty will not apply to any product that was sold to the original purchaser as a reconditioned or refurbished product (unless otherwise specified in writing);
- g) this warranty will not apply to any product or part thereof if any part from another manufacturer is installed therein or any repairs or alterations have been made or attempted by unauthorized persons;
- h) this warranty will not apply to normal deterioration of the exterior finish, such as, but not limited to, scratches, dents, paint chips, or to any corrosion or discolouring by heat, abrasive and chemical cleaners; and

EXPLODED VIEW

WARRANTY

- i) this warranty will not apply to component parts sold by and identified as the product of another company, which shall be covered under the product manufacturer’s warranty, if any.

Additional Limitations

This warranty applies only to the original purchaser and may not be transferred. Neither the retailer nor the manufacturer shall be liable for any other expense, loss or damage, including, without limitation, any indirect, incidental, consequential or exemplary damages arising in connection with the sale, use or inability to use this product.

Notice to Consumer

This warranty gives you specific legal rights, and you may have other rights, which may vary from province to province. The provisions contained in this warranty are not intended to limit, modify, take away from, disclaim or exclude any statutory warranties set forth in any applicable provincial or federal legislation.