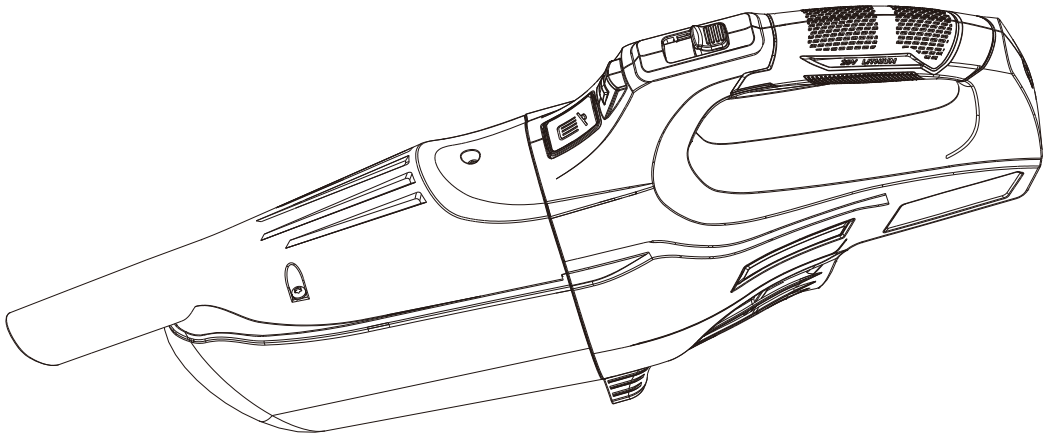




CORDLESS HANDHELD VACUUM



Model no. 054-8779-2

IMPORTANT:

Read and understand this instruction manual thoroughly before using the product.

**INSTRUCTION
MANUAL**

TABLE OF CONTENTS

TECHNICAL SPECIFICATIONS	4
SAFETY GUIDELINES	4
KEY PARTS DIAGRAM	15
OPERATING INSTRUCTIONS	16
FILTER REPLACEMENT	20
MAINTENANCE	21
TROUBLESHOOTING	22
EXPLODED VIEW	23
PARTS LIST	24
WARRANTY	25

If any parts are missing or damaged, or if you have any questions, please call our toll free helpline at 1-800-689-9928.



Read and understand this instruction manual thoroughly before using the product. It contains important information for your safety as well as operating and maintenance advice.
Keep this instruction manual for future use. Should this product be passed on to a third party, then this instruction manual must be included.

TECHNICAL SPECIFICATIONS

Tank size*	700 mL (0.2 U.S. gallons / 0.2 Imperial gallons)
Battery voltage	DC 20V
Hose	1 1/4" (3.2 cm)
Maximum vacuum in H ₂ O	44" (111.8 cm)
Air flow [‡]	42 CFM
Filter	HEPA filter
Weight	6 lb 4 oz (2.85 kg) without battery
Batteries	2.0 Ah Li-ion (054-7563-0; sold separately) 4.0 Ah Li-ion (054-7564-8; sold separately) 5.0 Ah Li-ion (054-7558-4; sold separately) 8.0 Ah Li-ion (054-7569-8; sold separately)

* "Tank Size" refers to the actual tank volume, and does not reflect capacity available during operation.

‡ Airflow tested to ASTM standard at the end of included hose.

IMPORTANT SAFETY INSTRUCTIONS

READ AND UNDERSTAND ALL INSTRUCTIONS BEFORE USING THIS VACUUM.


Read and understand this operator's manual and all labels on the vacuum cleaner before operating. Safety is a combination of common sense, staying alert and knowing how your vacuum works. Use this vacuum only as described in this manual. To reduce the risk of personal injury or damage to your vacuum, use only manufacturer recommended accessories.


FOR HOUSEHOLD USE ONLY.

DEFINITIONS: SAFETY ALERT SYMBOLS AND WORDS

This instruction manual uses the following safety alert symbols and words to alert you to hazardous situations and your risk of personal injury or property damage.

 **DANGER:** Indicates an imminently hazardous situation which, if not avoided, will result in death or serious injury.

 **WARNING:** Indicates a potentially hazardous situation which, if not avoided, could result in death or serious injury.

 **CAUTION:** Indicates a potentially hazardous situation which, if not avoided, may result in minor or moderate injury.

NOTICE: Indicates a practice not related to personal injury which, if not avoided, may result in property damage.

SAVE THIS MANUAL FOR FUTURE REFERENCE.

When using a vacuum, basic precautions should always be followed including the following:



WARNING:

TO REDUCE THE RISK OF FIRE, ELECTRIC SHOCK OR INJURY:

- Do not leave the appliance when connected to power source. Remove the battery pack when not in use and before servicing.
- Do not allow appliance to be used as a toy. Close attention is necessary when used by or near children.
- Use this appliance ONLY as described in the manual. Use only recommended attachments.
- Do not use this appliance if it is showing signs of malfunction in any way. If the appliance is not working correctly, has been dropped, damaged, left outdoors, or dropped into water, return it to a service centre.
- Do not handle the appliance with wet hands.
- Do not put any objects into the openings of the appliance. Do not use the appliance with any opening blocked; keep free of dust, lint, hair and anything else that may reduce airflow.
- Keep hair, loose clothing, fingers, and all body parts away from the openings and moving parts.
- Turn off all controls before disconnecting from power source.
- Use extra care when cleaning on stairs.
- Do not use the appliance to pick up flammable or combustible liquids, such as gasoline, or use in areas where flammable or combustible liquids are present.

SAVE THESE INSTRUCTIONS

ADDITIONAL SAFETY RULES

- Do not use this appliance if the appliance is not working correctly, has been dropped, damaged, left outdoors, or dropped in water; return it to a service centre.
- Do not place outlet of vacuum near eyes or ears when operating.



WARNING:

To reduce the risk of electric shock, do not expose to rain. Store indoors.

- Use safety equipment. Always wear eye protection. Dust mask, non-skid safety shoes, hard hat, or hearing protection must be used for appropriate conditions.
- Do not use without filter in place.
- Do not pick up anything that is burning or smoking, such as cigarettes, matches or hot ashes.
- Do not use in areas where explosive vapours may be present.
- Do not use to pick up explosive dust, or in areas where air contains explosive dust such as coal, grain, or other combustible material.
- Static shocks are possible in dry areas or when the relative humidity of the air is low. This is only temporary and does not affect the use of the vacuum. To reduce the frequency of static shocks, add moisture to the air with a console or installed humidifier.
- To avoid spontaneous combustion, empty canister after each use.
- Store idle tools. When not in use, the vacuum should be stored in a dry, high or locked up place – out of the reach of children.
- Disconnect battery pack from vacuum before making any adjustments, changing accessories, servicing, moving or storing the vacuum. Such preventative safety measures reduce the risk of starting the appliance accidentally.
- Avoid accidental starting. Be sure the switch is in the off position before inserting the battery pack.
- Never leave vacuum running unattended. Turn power off.
- Keep your work area clean and well lit. Cluttered benches and dark areas invite accidents.

**WARNING:**

To reduce the risk of electric shock, do not expose to rain. Store indoors.

**WARNING:**








For your own safety, read and understand the operator's manual. Do not run unattended. Do not pick up hot ashes, coals, toxic, flammable or other hazardous materials. Do not use around explosive liquids or vapours.

**CAUTION:**

Do not vacuum drywall dust, fireplace soot, or ash. These are fine dusts which will not be captured by the filter and may cause damage to the motor. When vacuuming fine dust, use a fine dust filter.

- Avoid body contact with grounded surfaces such as pipes, radiators, ranges and refrigerators. There is an increased risk of electric shock if your body is grounded.
- Do not overreach. Keep proper footing and balance at all times. Proper footing and balance enables better control of the vacuum in unexpected situations.
- Do not use appliance if switch does not turn it on or off. Any appliance that cannot be controlled with the switch is dangerous and must be repaired.
- Turn off all controls before removing the battery.

The label on the unit may include the following symbols. The symbols and their definitions are as follows:

V	Volts		Read the manual before set-up and/or use.
	Double Insulated		Wear hearing protection.
~	Alternating Current		WARNING! Risk of Fire.
A	Amperes		WARNING! Risk of Electric Shock.
	Wear eye protection.		WARNING!

BATTERIES AND CHARGERS

Before using the battery and charger, read the safety instructions below and then follow charging procedures outlined. When ordering a replacement battery, be sure to include the catalogue number and voltage.

IMPORTANT SAFETY INSTRUCTIONS FOR THE BATTERY**WARNING:**

Read all safety warnings, instructions, and cautionary markings for the battery, charger and product. Failure to follow the warnings and instructions may result in electric shock, fire and/or serious injury.

- Do not charge or use the battery in explosive atmospheres, such as in the presence of flammable liquids, gases or dust. Inserting or removing the battery from the charger may ignite the dust or fumes.
- **When battery is not in use, keep it away from other metal objects, like paper clips, coins, keys, nails, screws, or other small metal objects, that can make a connection from one terminal to another.** Shorting the battery terminals together may cause burns or a fire.
- **NEVER force the battery into the charger. DO NOT modify the battery in any way to fit into a non-compatible charger as battery may rupture causing serious personal injury.**
- Charge the battery only in PWR POD™ chargers.
- **DO NOT** splash or immerse in water or other liquids.
- **Do not store or use the vacuum and battery in locations where the temperature may reach or exceed 104°F (40°C) (such as outside sheds or metal buildings in summer). Recommend operating temperature: 14°F (-10°C) to 104°F (40°C).** For best life, store battery in a cool, dry location.

NOTE: Do not store the battery in a tool with the trigger switch locked on. Never tape the trigger switch in the ON position.

- **Do not incinerate the battery even if it is severely damaged or is completely worn out.** The battery pack can explode in a fire. Toxic fumes and materials are created when lithium-ion batteries are burned.

**WARNING:**

Burn hazard. Battery liquid may be flammable if exposed to spark or flame.

**WARNING:**

Fire hazard. Never attempt to open the battery pack for any reason. If the battery pack case is cracked or damaged, do not insert into the charger. Do not crush, drop or damage the battery pack. Do not use a battery pack or charger that has received a sharp blow, been dropped, run over or damaged in any way (e.g., pierced with a nail, hit with a hammer, stepped on). Damaged battery packs should be returned to the service centre for recycling.

- **If battery contents come into contact with the skin, immediately wash area with mild soap and water.** If battery liquid gets into the eye, rinse water over the open eye for 15 minutes or until irritation ceases. If medical attention is needed, the battery electrolyte is composed of a mixture of liquid organic carbonates and lithium salts.
- **Contents of opened battery cells may cause respiratory irritation.** Provide fresh air. If symptoms persist, seek medical attention.

STORAGE RECOMMENDATIONS

- The best storage place is one that is cool and dry, away from direct sunlight and excess heat or cold.
- For long storage, it is recommended to store a fully charged battery in a cool, dry place out of the charger for optimal results.

NOTE: Battery should not be stored completely depleted of charge. The battery will need to be recharged before use.



WARNING:

Fire hazard. Do not store or carry the battery so that metal objects can contact exposed battery terminals. For example, do not place the battery in aprons, pockets, tool boxes, product kit boxes, drawers, etc., with loose nails, screws, keys, etc. Transporting batteries can possibly cause fires if the battery terminals inadvertently come in contact with conductive materials such as keys, coins, hand tools and the like. The Canadian Dangerous Goods Transportation Regulations (CDGTR) actually prohibit transporting batteries in commerce or on airplanes in carry-on baggage **UNLESS** they are properly protected from short circuits. So when transporting individual battery, make sure that the battery terminals are protected and well insulated from materials that could contact them and cause a short circuit.

IMPORTANT SAFETY INSTRUCTIONS FOR ALL BATTERY CHARGERS**WARNING:**

Read all safety warnings, instructions, and cautionary markings for the battery pack, charger and product. Failure to follow the warnings and instructions may result in electric shock, fire and/or serious injury.

- **DO NOT attempt to charge the battery with any charger other than a PWR POD™ charger.** PWR POD™ chargers and batteries are specifically designed to work together.
- **These chargers are not intended for any uses other than charging PWR POD™ rechargeable batteries.** Any other uses may result in risk of fire or electric shock.
- **Do not expose the charger to rain or snow.**
- **Pull by the plug rather than the cord when disconnecting the charger.** This will reduce the risk of damage to the electric plug and cord.
- **Make sure that the cord is located so that it will not be stepped on, tripped over or otherwise subjected to damage or stress.**
- **Do not use an extension cord unless it is absolutely necessary.** Use of improper extension cord could result in risk of fire, electric shock or electrocution.
- **When operating a charger outdoors, always provide a dry location and use an extension cord suitable for outdoor use.** Use of a cord suitable for outdoor use reduces the risk of electric shock.
- **An extension cord must have adequate wire size (AWG or American Wire Gauge) for safety.** The smaller the gauge number of the wire, the greater the capacity of the cable, that is, 16 gauge has more capacity than 18 gauge. An undersized cord will cause a drop in line voltage resulting in loss of power and overheating. When using more than one extension to make up the total length, be sure each individual extension contains at least the minimum wire size. The following table shows the correct size to use depending on cord length and nameplate ampere rating. If in doubt, use the next heavier gauge. The lower the gauge number, the heavier the cord.

Minimum Gauge for Cord Sets

Volts		Total Length of Cord in Feet (metres)			
120 V		25 (7.6)	50 (15.2)	100 (30.5)	150 (45.7)
240 V		50 (15.2)	100 (30.5)	200 (61.0)	300 (91.4)
Ampere Rating		American Wire Gauge			
More Than	Not More Than				
0	6	18	16	16	14
6	10	18	16	14	12
10	12	16	16	14	12
12	16	14	12	Not Recommended	

- **Do not place any object on top of the charger or place the charger on a soft surface that might block the ventilation slots and result in excessive internal heat.** Place the charger in a position away from any heat source. The charger is ventilated through slots in the top and the bottom of the housing.
- Do not operate the charger with a damaged cord or plug.
- **Do not operate the charger if it has received a sharp blow, been dropped or otherwise damaged in any way.** Take it to an authorized service centre.
- Do not disassemble the charger; take it to an authorized service centre when service or repair is required. Incorrect reassembly may result in a risk of electric shock, electrocution or fire.
- **Disconnect the charger from the outlet before attempting any cleaning.** **This will reduce the risk of electric shock.** Removing the battery pack will not reduce this risk.
- **NEVER** attempt to connect 2 chargers together.
- The charger is designed to operate on standard 120V household electrical power. Do not attempt to use it on any other voltage. This does not apply to the vehicular charger.

**WARNING:**

Shock hazard. Do not allow any liquid to get inside the charger. Electric shock may result.

**WARNING:**

Burn hazard. Do not submerge the battery in any liquid or allow any liquid to enter the battery pack. Never attempt to open the battery for any reason. If the plastic housing of the battery breaks or cracks, return to a service centre for recycling.

**CAUTION:**

Burn hazard. To reduce the risk of injury, charge only PWR POD™ rechargeable batteries. Other types of batteries may overheat and burst resulting in personal injury and property damage.

**NOTICE:**

Under certain conditions, with the charger plugged into the power supply, the charger can be shorted by foreign material. Foreign materials of a conductive nature, such as, but not limited to, grinding dust, metal chips, steel wool, aluminum foil or any buildup of metallic particles, should be kept away from the charger cavities. Always unplug the charger from the power supply when there is no battery in the cavity. Unplug the charger before attempting to clean.

CHARGING A BATTERY

NOTE: To ensure maximum performance and life of lithium-ion battery, charge the battery fully before first use.

- Plug the charger into an appropriate outlet before inserting battery.
- Connect the charger and battery, making sure the battery is fully seated. The (charging) light will blink continuously indicating that the charging process has started.
- The completion of charge will be indicated by the light remaining ON continuously. The battery is fully charged and may be removed and used at this time or left in the charger.

NOTE: To remove the battery, some chargers require the battery release button to be pressed.

Indicators



Charging



Fully Charged



A charger will not charge a faulty battery. The charger refusing to light could indicate a problem with the charger.

NOTE: If the charger refuses to light, take the charger and battery to be tested at an authorized service centre.

IMPORTANT CHARGING NOTES

1. Longest life and best performance can be obtained if the battery is charged when the air temperature is between 65 and 75°F (18 and 24°C). DO NOT charge when the battery is below +40°F (+4.5°C) or above +104°F (+40°C). This is important and will prevent serious damage to the battery.
2. The charger and battery may become warm to the touch while charging. This is a normal condition and does not indicate a problem. To facilitate the cooling of the battery after use, avoid placing the charger or battery in a warm environment such as in a metal shed or an uninsulated trailer.
3. If the battery does not charge properly:
 - a. Check operation of receptacle by plugging in a lamp or other appliance;
 - b. Check to see if receptacle is connected to a light switch which turns power off when you turn out the lights;
 - c. Move the charger and battery to a location where the surrounding air temperature is between 65 and 75 °F (18 and 24°C); and
 - d. If charging problems persist, take the tool, battery and charger to your local service centre.

4. The battery should be recharged when it fails to produce sufficient power on jobs which were easily done previously. **DO NOT CONTINUE** to use under these conditions. Follow the charging procedure. You may also charge a partially used pack whenever you desire with no adverse effect on the battery.
5. Foreign materials of a conductive nature such as, but not limited to, grinding dust, metal chips, steel wool, aluminum foil, or any buildup of metallic particles should be kept away from charger cavities. Always unplug the charger from the power supply when there is no battery pack in the cavity. Unplug the charger before attempting to clean.
6. Do not freeze or immerse the charger in water or any other liquid.

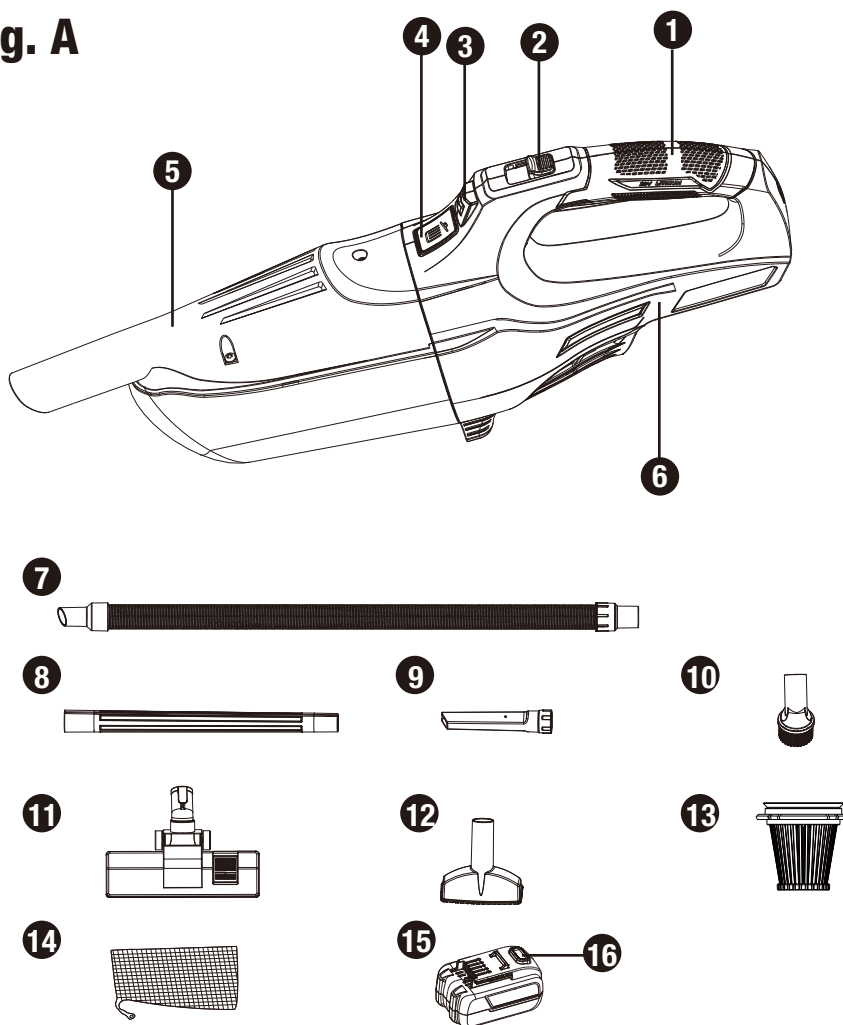
CHARGER CLEANING INSTRUCTIONS



WARNING:

Shock hazard. Disconnect the charger from the AC outlet before cleaning. Dirt and grease may be removed from the exterior of the charger using a cloth or soft non-metallic brush. Do not use water or any cleaning solutions.

Fig. A



No.	Description	No.	Description
1	Handle	9	Crevice nozzle
2	Switch button	10	Round brush
3	Lampshade	11	Floor brush
4	Dust cup button	12	Gulper nozzle
5	Dust bucket assembly	13	HEPA filter
6	Housing components	14	Accessory bag
7	Hose	15	Battery (not included)
8	Extension wand	16	Battery-release button (on battery)

ASSEMBLY AND ADJUSTMENTS

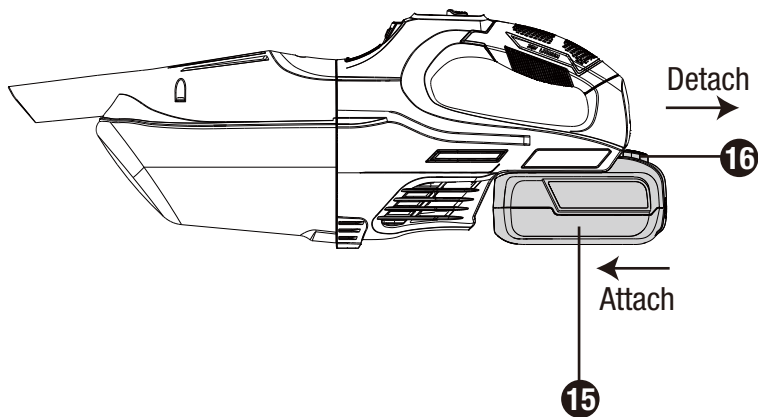
TO ATTACH BATTERY PACK (FIG. A, B)

1. Align the raised portion on the battery (not included) pack with the groove on the bottom of the tool, then slide the battery pack into the body of the tool.
2. Make sure that the battery pack latches securely.

TO DETACH BATTERY PACK (FIG. A, B)

Depress the battery-release button, located on the front of the battery pack.

Fig. B



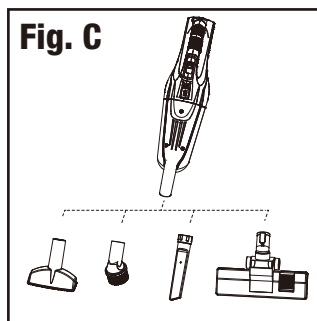
CAUTION:

Ensure battery port and terminals are dry and clean before installing battery.
See Filter section of this manual.

INSTALLING AND REMOVING ACCESSORY (FIG. C)

To install, firmly insert one of the accessories completely onto the intake port on the dust canister.

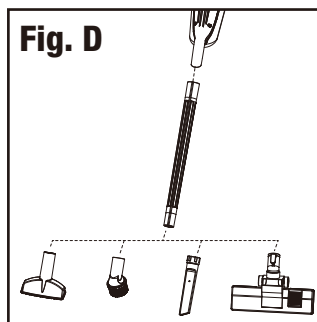
To remove, simply pull the accessory off of the intake port.



INSTALLING AND REMOVING THE EXTENSION TUBE (FIG. D)

To install, firmly insert the extension tube completely onto the intake port on the dust canister, then insert one of the accessories into the tube.

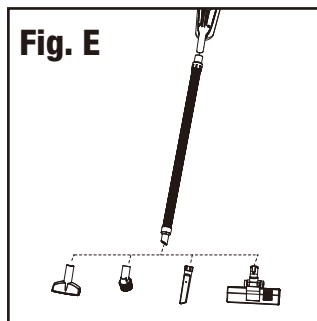
To remove, simply pull the extension tube off of the intake port.



INSTALLING AND REMOVING THE HOSE (FIG. E)

To install, firmly insert the hose completely onto the intake port on the dust canister, then insert one of the accessories into the hose.

To remove, simply pull the hose off of the intake port.

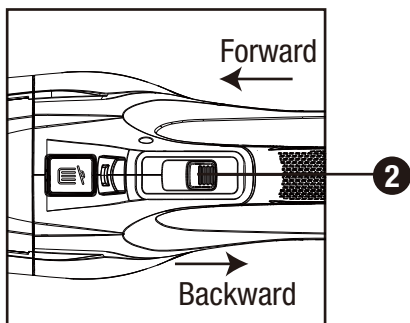


WARNING:

To reduce the risk of serious personal injury, turn unit off and disconnect it from power source before making any adjustments or removing/installing attachments or accessories. An accidental start-up can cause injury.

SWITCHING ON AND OFF (FIG. A, F)

1. Attach the appropriate accessory to the vacuum.
2. Insert battery.
3. To turn vacuum on, push the on/off switch forward.
To turn the vacuum off, push the on/off switch backward.

Fig. F

CLEANING THE DUST BUCKET ASSEMBLY AND THE FILTER ASSEMBLY (Fig. G, H)

To maintain optimal performance of the vacuum, clean the dust canister after each use.

1. Press the dust cup button and remove the dust canister from the motor housing. Remove the filter assembly from the dust bucket assembly.
2. Shake/tap out the dust bucket assembly over a suitable waste bin. If required, clean the dust bucket assembly with a moist cloth. If required, clean the filter assembly. To clean the filter assembly, shake or brush off excess dirt or rinse (from the inside of the filter) with water, dry completely (approximately 24 hours) and re-install.
3. Reinsert the dust bucket assembly into the motor housing, applying light pressure until the dust canister can be heard to engage.

Fig. G

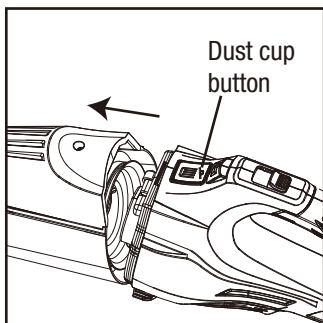
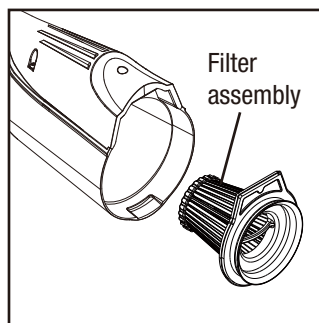


Fig. H



WARNING:

Make sure the filter assembly is dry when attaching.
The penetration of liquid may increase the risk of fire.

FILTER REPLACEMENT**WARNING:**

To reduce the risk of injury from accidental starting, remove the battery from the machine before changing or cleaning filter. The filter should be cleaned often to maintain peak vacuum performance.

NOTE: To avoid damage to the fan and motor, always reinstall the reusable dry filter before using the vacuum for dry pickups.

NOTE: After cleaning, check the filter for tears or small holes. Do not use a filter with holes or tears in it. Even a small hole can cause dust to come out of your vacuum. Replace it immediately.

NOTE: Before installing the filter on the vacuum, clean the area of the lid so that the clamp ring will seal the bag against the lid and stop small particles from bypassing the filter bag. If the filter is clean and not damaged, replace it on the filter cage. If it cannot be reused, place a new filter over the filter cage.

NOTE: Clean the filter in an open area.

MAINTENANCE



WARNING:

Any maintenance must be carried out with the machine switched off and the battery removed.

BEFORE EACH USE

- Inspect the cordless handheld vacuum, the switch, and the accessories for damage.
- Check for damaged, missing, or worn parts.
- Check for loose screws, misalignment or binding of moving parts, or any other condition that may affect the operation.
- If abnormal vibration or noise occurs, turn the tool off immediately, and have the problem corrected before further use.

CLEANING

To keep the vacuum looking its best, clean the outside with a cloth dampened with warm water and mild soap.

To clean the tank:

- Empty the tank.
- Wash tank thoroughly with warm water and mild soap.
- Wipe out with dry cloth.

STORAGE

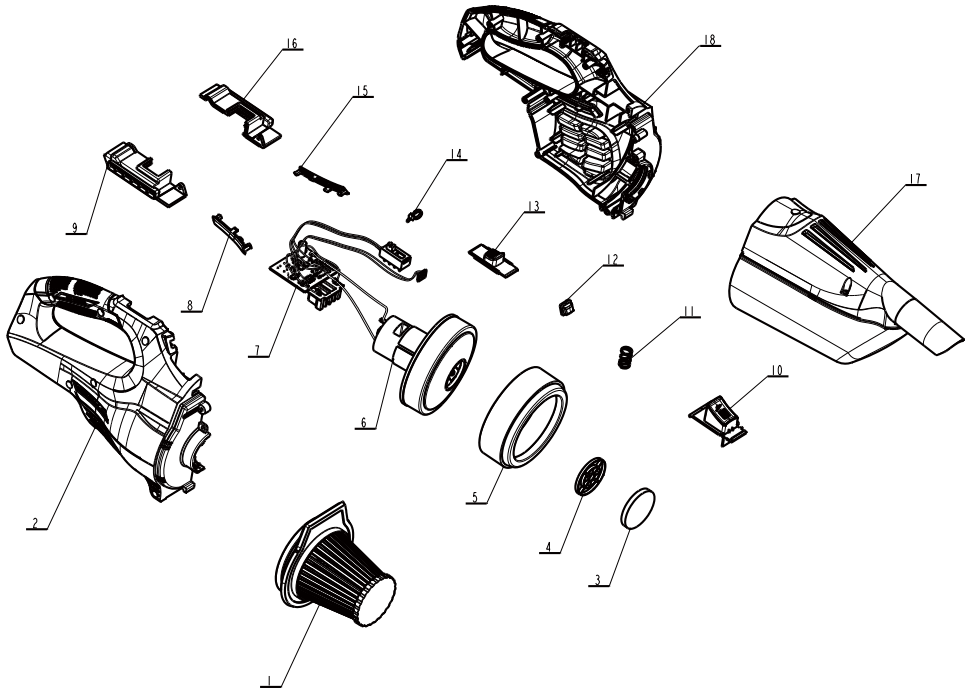
Before storing the vacuum, the dust tank should be emptied and cleaned. The accessories should be kept in the accessory holder so they can be readily available. The vacuum should be stored indoors.



WARNING:

- To avoid accidents, always disconnect the tool from the battery pack before cleaning or performing any maintenance. The tool may be cleaned most effectively with compressed dry air. Always wear safety goggles when cleaning tools with compressed air.
- Do not let brake fluids, gasoline, petroleum-based products, penetrating oil, etc., come into contact with plastic parts. These substances contain chemicals that can damage, weaken, or destroy plastic.
- When servicing, use only identical replacement parts. The use of any other parts may create a hazard or cause damage to the product.
- Use only accessories that are recommended for this tool. Accessories that may be suitable for one tool may become hazardous when used with another tool.
- To ensure safety and reliability, all repairs should be performed by a qualified service technician. Maintain tools with care.

PROBLEM	POSSIBLE CAUSE	SOLUTION
Unit does not start.	Battery is not installed properly.	Check battery installation.
	Battery is not charged.	Check battery charging requirements.
	Internal components are too hot.	Allow vacuum to cool down.
Battery does not charge.	Battery is not inserted into charger.	Insert battery into charger until LED illuminates.
	Charger is not plugged in.	Plug charger into a working outlet. Refer to Important Charging Notes for more details.
	Surrounding air temperature is too hot or too cold.	Move battery to a surrounding air temperature of above 40°F (4.5°C) or below 104°F (40°C).
Unit shuts off abruptly.	Battery has reached its maximum thermal limit.	Allow battery to cool down.
	Out of charge. (To maximize the life of the battery, it is designed to shut off abruptly when the charge is depleted.)	Place battery on charger and allow to charge.
Unit has reduced suction.	Tank is full.	Empty tank.
	Filter is dirty or clogged.	Clean or replace filter.



No.	Description	No.	Description
1	Filter assembly	10	Dust cup button spring
2	Housing assembly (R)	11	Dust cup button
3	Air inlet filter sponge	12	Lamp cover
4	Air inlet baffle	13	Switch push button
5	Motor seal	14	Cable ties
6	Motor	15	Decorative cover (L)
7	Circuit board assembly	16	Socket (L)
8	Decorative cover (R)	17	Housing assembly (L)
9	Socket (R)	18	Dust bucket assembly

MASTERCRAFT LIMITED WARRANTY

This Mastercraft® product is guaranteed for a period of three (3) years from the date of original retail purchase against defects in workmanship and materials, except for the following component:

Component A: Accessories, which are guaranteed for a period of one (1) year from the date of original retail purchase against defects in workmanship and materials.

Subject to the conditions and limitations described below, this product, if returned to us with proof of purchase within the stated warranty period and if covered under this warranty, will be repaired or replaced (with the same model, or one of equal value or specification), at our option.

We will bear the cost of any repair or replacement and any costs of labour relating thereto.

These warranties are subject to the following conditions and limitations:

- a) a bill of sale verifying the purchase and purchase date must be provided;
- b) this warranty will not apply to any product or part thereof which is worn or broken or which has become inoperative due to abuse, misuse, accidental damage, neglect or lack of proper installation, operation or maintenance (as outlined in the applicable owner's manual or operating instructions) or which is being used for industrial, professional, commercial or rental purposes;
- c) this warranty will not apply to normal wear and tear or to expendable parts or accessories that may be supplied with the product which are expected to become inoperative or unusable after a reasonable period of use;
- d) this warranty will not apply to routine maintenance and consumable items such as, but not limited to, fuel, lubricants, vacuum bags, blades, belts, sandpaper, bits, fluids, tune-ups or adjustments;
- e) this warranty will not apply where damage is caused by repairs made or attempted by others (i.e., persons not authorized by the manufacturer);
- f) this warranty will not apply to any product that was sold to the original purchaser as a reconditioned or refurbished product (unless otherwise specified in writing);
- g) this warranty will not apply to any product or part thereof if any part from another manufacturer is installed therein or any repairs or alterations have been made or attempted by unauthorized persons;
- h) this warranty will not apply to normal deterioration of the exterior finish, such as, but not limited to, scratches, dents, paint chips, or to any corrosion or discolouring by heat, abrasive and chemical cleaners; and
- i) this warranty will not apply to component parts sold by and identified as the product of another company, which shall be covered under the product manufacturer's warranty, if any.

Additional Limitations

This warranty applies only to the original purchaser and may not be transferred. Neither the retailer nor the manufacturer shall be liable for any other expense, loss or damage, including, without limitation, any indirect, incidental, consequential or exemplary damages arising in connection with the sale, use or inability to use this product.

Notice to Consumer

This warranty gives you specific legal rights, and you may have other rights, which may vary from province to province. The provisions contained in this warranty are not intended to limit, modify, take away from, disclaim or exclude any statutory warranties set forth in any applicable provincial or federal legislation.

Made in China

Imported by Mastercraft Canada Toronto, Canada M4S 2B8