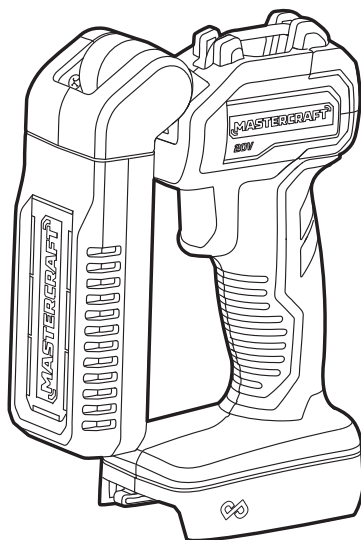


MASTERCRAFT™/MC

ROTATING MOUNTABLE LED LIGHT

054-8712-0



IMPORTANT:

Read and understand this instruction manual thoroughly before using the product.

INSTRUCTION MANUAL

TABLE OF CONTENTS

Technical Specifications	4
Safety Guidelines	5
Key Parts Diagram	8
Operating Instructions	9
Maintenance	11
Troubleshooting	12
Parts List	13
Warranty	14

NOTE:

If any parts are missing or damaged, or if you have any questions, please call our toll-free helpline at 1-800-689-9928.



SAVE THESE INSTRUCTIONS

- This manual contains important safety and operating instructions. Read all instructions and follow them when using this product.

TECHNICAL SPECIFICATIONS

Rated Voltage	20 V d.c. max*
Numbers of LED	6 pcs
Luminous Flux (brightness)	700/300/100 lm
Head Pivot	180° Pivot / 270° Swivel
Run Time	60 hours (using a 4.0 Ah battery on the lowest mode)

*Maximum battery voltage without workload; with workload nominal voltage is 18 V.

Recommend using tool with Mastercraft® and PWR POD™ 20 V max* Lithium-ion 2.0 Ah battery (054-7553-4 and 054-7563-0; sold separately) for optimal performance.

COMPATIBLE BATTERIES AND CHARGERS

Brand	Battery Pack	Charger
PWR POD™	2.0 Ah: 054-7563-0	90 W Fast Charger: 054-7565-6 60 W x2 Dual-Port Charger: 054-7567-2 150 W Four Port Fast Charger: 054-7571-0
	4.0 Ah: 054-7564-8	
	5.0 Ah: 054-7558-4	
	8.0 Ah: 054-7569-8	
Mastercraft®	1.5 Ah: 054-3124-0	45 W Charger: 054-3126-6 90 W Fast Charger: 054-7559-2 60 W x2 Dual-Port Charger: 054-8299-4
	2.0 Ah: 054-7553-4	
	4.0 Ah: 054-7557-6	
	5.0 Ah: 054-2434-8	

Batteries with an Ah of 2.0 or higher are recommended for optimal runtime and performance.

SAFETY GUIDELINES



WARNING!

Safety symbols in this Instruction Manual are used to flag possible dangers. The safety symbols and their explanations require your full understanding. The safety warnings do not, by themselves, eliminate any danger, nor are they substitutes for proper accident prevention measures.



WARNING!

This Safety Alert Symbol indicates caution, warning, or danger. Failure to obey a safety warning can result in serious injury to yourself or others. To reduce the risk of injury, fire, or electric shock, always follow the safety precautions.

KNOW YOUR TOOL

To operate this tool, carefully read this Instruction Manual and all labels affixed to the rotating mountable LED light before using. Keep this instruction manual available for future reference.

IMPORTANT

This tool should only be serviced by a qualified service technician. For more information, call the toll-free helpline at 1-800-689-9928.

READ ALL INSTRUCTIONS THOROUGHLY.

SAVE THESE INSTRUCTIONS.

GENERAL POWER TOOL SAFETY WARNINGS



WARNING!

Read all safety warnings, instructions, illustrations and specifications provided with this power tool. Failure to follow all instructions listed below may result in electric shock, fire and/or serious injury.

SAVE ALL WARNINGS AND INSTRUCTIONS FOR FUTURE REFERENCE.

The term “power tool” in the warnings refers to your mains-operated (corded) power tool or battery-operated (cordless) power tool.

- **Prevent unintentional starting. Ensure the switch is in the off-position before connecting to battery pack, picking up or carrying the appliance.** Carrying the appliance with your finger on the switch or energizing appliance that have the switch on invites accidents.
- **Disconnect the battery pack from the appliance before making any adjustments, changing accessories, or storing appliance.** Such preventive safety measures reduce the risk of starting the appliance accidentally.
- **Do not operate this light in explosive atmospheres, such as in the presence of flammable liquids, gases or dust.** Light creates heat which may ignite the dust or fumes.

- **Recharge only with the charger specified by the manufacturer.** A charger that is suitable for one type of battery pack may create a risk of fire when used with another battery pack.
- **Use appliances only with specifically designated battery packs.** Use of any other battery packs may create a risk of injury and fire.
- **When battery pack is not in use, keep it away from other metal objects, like paper clips, coins, keys, nails, screws or other small metal objects, that can make a connection from one terminal to another.** Shorting the battery terminals together may cause burn or a fire.
- **Under abusive conditions, liquid may be ejected from the battery; avoid contact. If contact accidentally occurs, flush with water. If liquid contacts eyes, additionally seek medical help.** Liquid ejected from the battery may cause irritation or burns.
- **Do not use a battery pack or appliance that is damaged or modified.** Damaged or modified batteries may exhibit unpredictable behaviour resulting in fire, explosion or risk of injury.
- **Do not expose a battery pack or appliance to fire or excessive temperature.** Exposure to fire or temperature above 265°F (130°C) may cause explosion.
- **Follow all charging instructions and do not charge the battery pack or appliance outside of the temperature range specified in the instructions.** Charging improperly or at temperatures outside of the specified range may damage the battery and increase the risk of fire.
- **Have your power tool serviced by a qualified repair person using only identical replacement parts.** This will ensure that the safety of the power tool is maintained.
- **Never service damaged battery packs.** Service of battery packs should only be performed by the manufacturer or authorized service providers.
- Do not modify or attempt to repair the appliance or the battery pack (as applicable) except as indicated in the instructions for use and care.

ADDITIONAL SAFETY GUIDELINES FOR ROTATING MOUNTABLE LED LIGHT

- **The label on your tool may include the following symbols. The symbols and their definitions are as follows:**

V Volts

A Amperes

Hz Hertz

W Watts

min Minutes

—|— or d.c. Direct current

lm luminous flux



..... WARNING – To reduce the risk of injury, the user must read the instruction manual.



..... WARNING – To reduce the risk of injury, always wear eye protection.



..... CAUTION – Do not stare at operating lamp.

- **Do not direct the light beam at persons or pets and avoid staring into the light even from a distance.**
- **To reduce the risk of injury, do not stare at operating lamp. Serious eye injury could occur.**
- **Do not contact hot parts.**
- **To reduce the risk of electric shock, do not put work light and battery pack in water or other liquid.** Do not place or store appliance where it can fall or be pulled into a tub or sink.
- **To reduce the risk of injury, close supervision is necessary when a product is used near children.**
- **Only use attachments recommended or sold by the manufacturer.**



WARNING!

To reduce the risk of electric shock or damage to the charger and battery, use only the Mastercraft® and PWR POD™ batteries and chargers listed.

Brand	Battery Pack	Charger
PWR POD™	2.0 Ah: 054-7563-0	90 W Fast Charger: 054-7565-6
	4.0 Ah: 054-7564-8	60 W x2 Dual-Port Charger: 054-7567-2
	5.0 Ah: 054-7558-4	150 W Four Port Fast Charger: 054-7571-0
	8.0 Ah: 054-7569-8	
Mastercraft®	1.5 Ah: 054-3124-0	45 W Charger: 054-3126-6
	2.0 Ah: 054-7553-4	90 W Fast Charger: 054-7559-2
	4.0 Ah: 054-7557-6	60 W x2 Dual-Port Charger: 054-8299-4
	5.0 Ah: 054-2434-8	

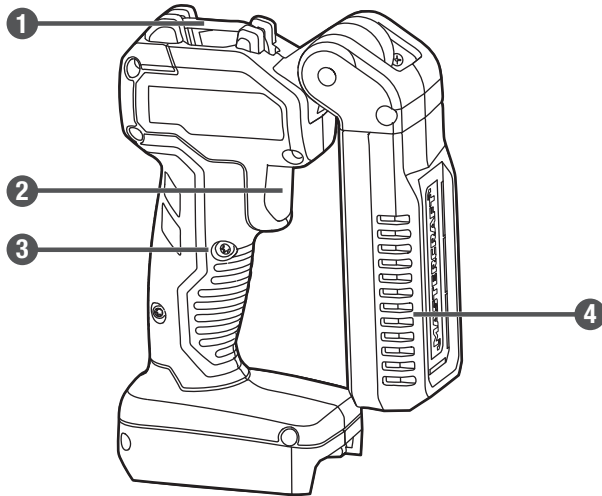
Batteries with an Ah of 2.0 or higher are recommended for optimal runtime and performance.

- **For best results, your battery tool should be stored and used in a location where the temperature is more than 41°F (5°C) but less than 104°F (40°C).** Do not store outside or in vehicles.

SAVE THESE INSTRUCTIONS!

PACKAGE CONTENTS:

Rotating mountable LED light and instruction manual

KEY PARTS DIAGRAM

No.	Description
1	Hanging Loop
2	On/Off Button

No.	Description
3	Handle Grip
4	Light Head

Before attempting to use this tool, become familiar with all of its operating features and safety requirements. For optimum performance and safety, read the following operating instructions carefully before using.

**WARNING!**

- Remove the rotating mountable LED light from the package and examine it carefully. Do not discard the carton or any packaging material until all parts have been examined.
- If any part of the rotating mountable LED light is missing or damaged, do not attach the battery pack to the tool or use the tool until the part has been repaired or replaced. Failure to heed this warning could result in serious injury.
- Do not allow familiarity with the rotating mountable LED light to cause a lack of alertness. A fraction of a second of carelessness is enough to cause severe injury.
- Do not attempt to modify this tool or create accessories not recommended for use with this tool. Any such alteration or modification is misuse and could result in a hazardous condition leading to possible serious injury.

OPERATING INSTRUCTIONS

ATTACH THE BATTERY PACK (fig. 1)

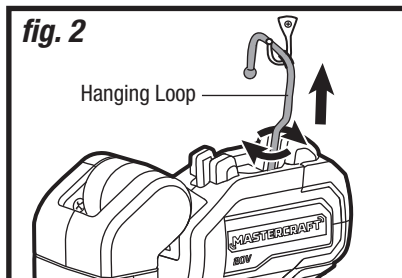
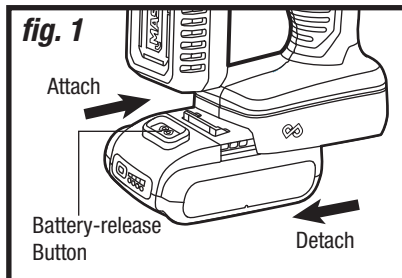
Align the raised rib on the battery pack with the grooves in the tool, and then slide the battery pack onto the tool.

DETACH THE BATTERY PACK (fig. 1)

Depress the battery-release button, located on the front of the battery pack, to release the battery pack. Pull the battery pack out and remove it from the tool.

HANGING LOOP (fig. 2)

Your light is equipped with a hanging loop. It can be pulled out and pivoted 360 degrees to hang the light on a hook or a hook-like object.



NOTICE: Make sure that the latch on the battery pack snaps into place, and that the battery pack is attached securely to the tool before beginning operation.



WARNING!

- To prevent the risk of injury or product damage, make sure that the hook or hook-like object is sturdy enough to support the weight of the light with attached battery pack.

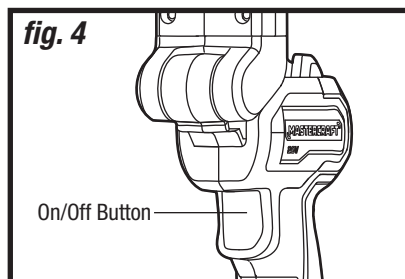
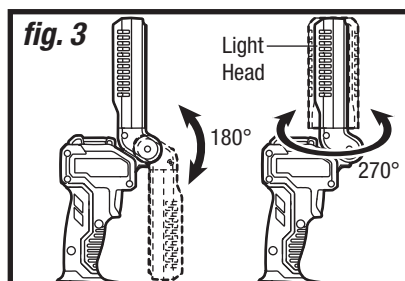
ADJUST THE LIGHT HEAD (fig. 3)

The light head pivots 180° and swivels 270° for maximum flexibility. Manually move the head to any position within the rotating range. Do not force the head beyond that range.

ON/OFF BUTTON (fig. 4)

Your inspection light is equipped with a three-stage brightness adjustment button, providing different light intensities for your operation. Press the On/Off button briefly to cycle through the three-stage brightness. Each press of the button switches brightness to the next stage.

1. To turn the light On, press the On/Off button. The light will be automatically turned on at maximum brightness.
2. To switch to medium brightness, press the On/Off button again.
3. To switch to low brightness, press the On/Off button again.
4. To turn the light Off, press the On/Off button again (a fourth time).

**CAUTION!**

- Do not stare at operating lamp.

MAINTENANCE

BEFORE EACH USE

1. Inspect the rotating mountable LED light, the button and the battery pack for damage.
2. Check for damaged, missing, or worn parts.
3. Check for loose screws, misalignment or binding of moving parts, or any other condition that may affect the operation.
4. If abnormal vibration or noise occurs, turn the tool off immediately and have the problem corrected before further use. Remove the battery from the power tool before cleaning or performing any maintenance.

CLEANING

Avoid using solvents when cleaning plastic parts. Most plastics are susceptible to damage from various types of commercial solvents and may be damaged by their use. Use clean cloths to remove dirt, dust, oil, grease, etc.

STORAGE

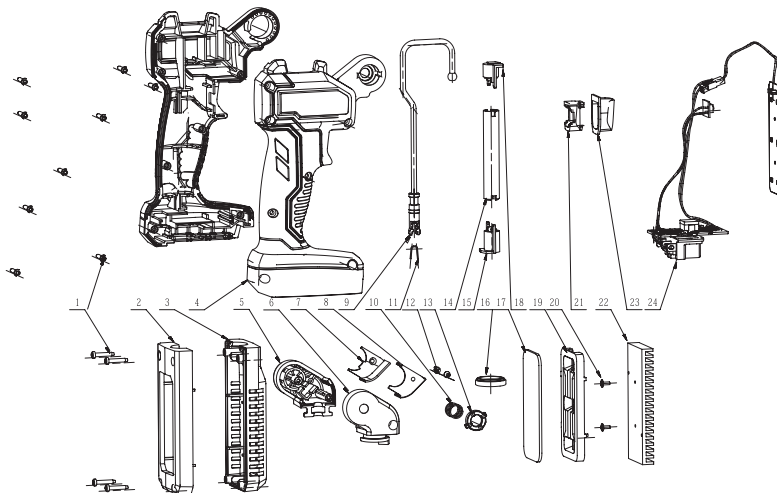
Store the tool indoors in a place that is inaccessible to children. Keep away from corrosive agents.

TROUBLESHOOTING

Problem	Possible causes	Solutions
The LED light does not light.	Battery pack is depleted.	Charge the battery.

If the problem remains unsolved after performing the checks described above, call the toll-free helpline at 1-800-689-9928.

EXPLODED VIEW



PARTS LIST

No.	Part No.	Description
1	5610241002	Screw
2	3134699001	Front Housing
3	3134700001	Rear Housing
4	3900730001	L R Handle Set
5	3130185001	Shaft
6	3130186001	Shaft
7	3130183001	Deck
8	3130184001	Deck
9	3402739001	Pothook
10	3660112001	Spring
11	3650132001	Clamp Wire
12	5610216002	Tapping Screw

No.	Part No.	Description
13	3520584001	Slip Bush
14	3125841001	Slip Bush
15	3127972001	Bottom Cover
16	5690447001	Rubber Gasket
17	3130177001	Transparent Guard
18	3127973001	Top Cover
19	3130178001	Reflector
20	5620176001	Screw With Washer
21	3130176002	Switch Support
22	3423536001	Heat Sink
23	3130181001	Switch Button
24	2831556001	Electric Assembly

If any parts are missing or damaged, or if you have any questions, please call the toll-free helpline at 1-800-689-9928.

This Mastercraft® product is guaranteed for a period of **3 years from the date of original retail purchase** against defects in workmanship and materials, except for the following components:

- a) Component A: Batteries, chargers and carrying case, which are guaranteed for a period of 2 years from the date of original retail purchase against defects in workmanship and materials;
- b) Component B: Accessories, which are guaranteed for a period of 1 year from the date of original retail purchase against defects in workmanship and materials.

Subject to the conditions and limitations described below, this product, if returned to us with proof of purchase within the stated warranty period and if covered under this warranty, will be repaired or replaced (with the same model, or one of equal value or specification), at our option. We will bear the cost of any repair or replacement and any costs of labour relating thereto.

These warranties are subject to the following conditions and limitations:

- a) a bill of sale verifying the purchase and purchase date must be provided;
- b) this warranty will not apply to any product or part thereof which is worn or broken or which has become inoperative due to abuse, misuse, accidental damage, neglect or lack of proper installation, operation or maintenance (as outlined in the applicable owner's manual or operating instructions) or which is being used for industrial, professional, commercial or rental purposes;
- c) this warranty will not apply to normal wear and tear or to expendable parts or accessories that may be supplied with the product that are expected to become inoperative or unusable after a reasonable period of use;
- d) this warranty will not apply to routine maintenance and consumable items such as, but not limited to, fuel, lubricants, vacuum bags, blades, belts, sandpaper, bits, fluids, tune-ups or adjustments;
- e) this warranty will not apply where damage is caused by repairs made or attempted by others (i.e., persons not authorized by the manufacturer);
- f) this warranty will not apply to any product that was sold to the original purchaser as a reconditioned or refurbished product (unless otherwise specified in writing);
- g) this warranty will not apply to any product or part thereof if any part from another manufacturer is installed therein or any repairs or alterations have been made or attempted by unauthorized persons;
- h) this warranty will not apply to normal deterioration of the exterior finish, such as, but not limited to, scratches, dents, paint chips, or to any corrosion or discolouring by heat, abrasive and chemical cleaners;
- i) this warranty will not apply to component parts sold by and identified as the product of another company, which shall be covered under the product manufacturer's warranty, if any.

Additional Limitations

This warranty applies only to the original purchaser and may not be transferred. Neither the retailer nor the manufacturer shall be liable for any other expense, loss or damage, including, without limitation, any indirect, incidental, consequential or exemplary damages arising in connection with the sale, use or inability to use this product.

Notice to Consumer

This warranty gives you specific legal rights, and you may have other rights, which may vary from province to province. The provisions contained in this warranty are not intended to limit, modify, take away from, disclaim or exclude any statutory warranties set forth in any applicable provincial or federal legislation.

Made in China

Imported by

Mastercraft Canada Toronto, Canada M4S 2B8

