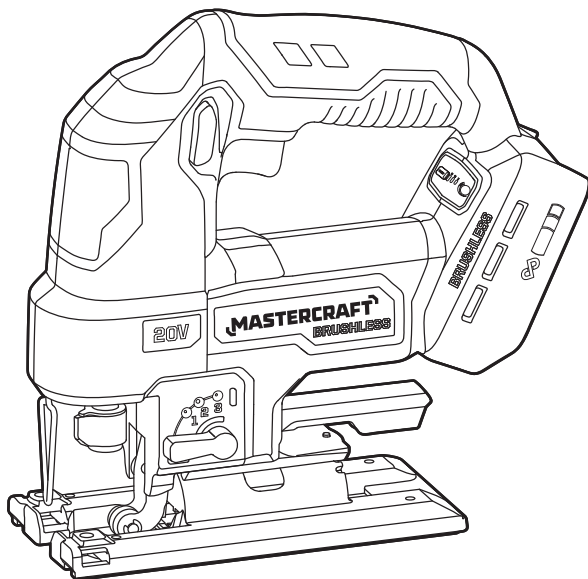


# MASTERCRAFT™/MC

## BRUSHLESS JIGSAW

054-8709-0



### IMPORTANT:

Read and understand this instruction manual thoroughly before using the product.

## INSTRUCTION MANUAL



## TABLE OF CONTENTS

Technical Specifications	4
Safety Guidelines	5
Key Parts Diagram	10
Operating Instructions	11
Maintenance	18
Troubleshooting	19
Parts List	20
Warranty	22

### NOTE:

If any parts are missing or damaged, or if you have any questions, please call our toll-free helpline at 1-800-689-9928.



### SAVE THESE INSTRUCTIONS

- This manual contains important safety and operating instructions. Read all instructions and follow them with use of this product.

**TECHNICAL SPECIFICATIONS**

Rated Voltage	20 V d.c. max*
Length of Stroke	7/8" (23 mm)
Speed Range	0 - 3400 SPM
Blade Type	T-shank
Cutting Angle Range	0 – 45° left & right
Cutting Capacity: Wood	3 1/2" (90 mm)
Cutting Capacity: Metal	25/64" (10 mm)

\*Maximum battery voltage without workload; with workload nominal voltage is 18 V.

Recommend using tool with Mastercraft® and PWR POD™ 20 V max\* Lithium-ion 4.0 Ah battery (054-7557-6 and 054-7564-8; sold separately) for optimal performance.

**COMPATIBLE BATTERIES AND CHARGERS**

Brand	Battery Pack	Charger
PWR POD™	2.0 Ah: 054-7563-0 4.0 Ah: 054-7564-8 5.0 Ah: 054-7558-4 8.0 Ah: 054-7569-8	90 W Fast Charger: 054-7565-6 60 W x2 Dual-Port Charger: 054-7567-2 150 W Four Port Fast Charger: 054-7571-0
Mastercraft®	1.5 Ah: 054-3124-0 2.0 Ah: 054-7553-4 4.0 Ah: 054-7557-6 5.0 Ah: 054-2434-8	45 W Charger: 054-3126-6 90 W Fast Charger: 054-7559-2 60 W x2 Dual-Port Charger: 054-8299-4

Batteries with an Ah of 4.0 or higher are recommended for optimal runtime and performance.

### SAFETY GUIDELINES:



#### WARNING!

Safety symbols in this Instruction Manual are used to flag possible dangers. The safety symbols and their explanations require your full understanding. The safety warnings do not, by themselves, eliminate any danger, nor are they substitutes for proper accident prevention measures.



#### WARNING!

This Safety Alert Symbol indicates caution, warning, or danger. Failure to obey a safety warning can result in serious injury to yourself or others. To reduce the risk of injury, fire, or electric shock, always follow the safety precautions.

### KNOW YOUR TOOL

To operate this tool, carefully read this Instruction Manual and all labels affixed to the brushless jigsaw before using. Keep this instruction manual available for future reference.

### IMPORTANT

This tool should only be serviced by a qualified service technician. For more information, call the toll-free helpline at 1-800-689-9928.

### READ ALL INSTRUCTIONS THOROUGHLY

### SAVE THESE INSTRUCTIONS

### GENERAL POWER TOOL SAFETY WARNINGS



#### WARNING!

**Read all safety warnings, instructions, illustrations and specifications provided with this power tool.** Failure to follow all instructions listed below may result in electric shock, fire and/or serious injury.

### SAVE ALL WARNINGS AND INSTRUCTIONS FOR FUTURE REFERENCE.

The term “power tool” in the warnings refers to your mains-operated (corded) power tool or battery-operated (cordless) power tool.

### WORK AREA SAFETY

- **Keep work area clean and well lit.** Cluttered or dark areas invite accidents.
- **Do not operate power tools in explosive atmospheres, such as in the presence of flammable liquids, gases or dust.** Power tools create sparks, which may ignite the dust or fumes.
- **Keep children and bystanders away while operating a power tool.** Distractions can cause you to lose control.

## ELECTRICAL SAFETY

- **Power tool plugs must match the outlet. Never modify the plug in any way. Do not use any adapter plugs with earthed (grounded) power tools.** Unmodified plugs and matching outlets will reduce risk of electric shock.
- **Avoid body contact with earthed or grounded surfaces, such as pipes, radiators, ranges and refrigerators.** There is an increased risk of electric shock if your body is earthed or grounded.
- **Do not expose power tools to rain or wet conditions.** Water entering a power tool will increase the risk of electric shock.
- **Do not abuse the cord. Never use the cord for carrying, pulling or unplugging the power tool. Keep cord away from heat, oil, sharp edges or moving parts.** Damaged or entangled cords increase the risk of electric shock.
- **When operating a power tool outdoors, use an extension cord suitable for outdoor use.** Use of a cord suitable for outdoor use reduces the risk of electric shock.
- **If operating a power tool in a damp location is unavoidable, use a ground-fault circuit interrupter (GFCI) protected supply.** Use of a GFCI reduces the risk of electric shock.

## PERSONAL SAFETY

- **Stay alert, watch what you are doing and use common sense when operating a power tool. Do not use a power tool while you are tired or under the influence of drugs, alcohol or medication.** A moment of inattention while operating power tools may result in serious personal injury.
- **Use personal protective equipment. Always wear eye protection.** Protective equipment such as a dust mask, non-skid safety shoes, hard hat or hearing protection used for appropriate conditions will reduce personal injuries.
- **Prevent unintentional starting. Ensure the switch is in the off-position before connecting to power source and/or battery pack, picking up or carrying the tool.** Carrying power tools with your finger on the switch or energizing power tools that have the switch on invites accidents.
- **Remove any adjusting key or wrench before turning the power tool on.** A wrench or a key left attached to a rotating part of the power tool may result in personal injury.
- **Do not overreach. Keep proper footing and balance at all times.** This enables better control of the power tool in unexpected situations.
- **Dress properly. Do not wear loose clothing or jewellery. Keep your hair and clothing away from moving parts.** Loose clothes, jewellery or long hair can be caught in moving parts.
- **If devices are provided for the connection of dust extraction and collection facilities, ensure these are connected and properly used.** Use of dust collection can reduce dust-related hazards.
- **Do not let familiarity gained from frequent use of tools allow you to become complacent and ignore tool safety principles.** A careless action can cause severe injury within a fraction of a second.

### POWER TOOL USE AND CARE

- **Do not force the power tool. Use the correct power tool for your application.** The correct power tool will do the job better and safer at the rate for which it was designed.
- **Do not use the power tool if the switch does not turn it on and off.** Any power tool that cannot be controlled with the switch is dangerous and must be repaired.
- **Disconnect the plug from the power source and/or remove the battery pack, if detachable, from the power tool before making any adjustments, changing accessories, or storing power tools.** Such preventive safety measures reduce the risk of starting the power tool accidentally.
- **Store idle power tools out of the reach of children and do not allow persons unfamiliar with the power tool or these instructions to operate the power tool.** Power tools are dangerous in the hands of untrained users.
- **Maintain power tools and accessories. Check for misalignment or binding of moving parts, breakage of parts and any other condition that may affect the power tool's operation. If damaged, have the power tool repaired before use.** Many accidents are caused by poorly maintained power tools.
- **Keep cutting tools sharp and clean.** Properly maintained cutting tools with sharp cutting edges are less likely to bind and are easier to control.
- **Use the power tool, accessories and tool bits etc. in accordance with these instructions, taking into account the working conditions and the work to be performed.** Use of the power tool for operations different from those intended could result in a hazardous situation.
- **Keep handles and grasping surfaces dry, clean and free from oil and grease.** Slippery handles and grasping surfaces do not allow for safe handling and control of the tool in unexpected situations.

### BATTERY TOOL USE AND CARE

- **Recharge only with the charger specified by the manufacturer.** A charger that is suitable for one type of battery pack may create a risk of fire when used with another battery pack.
- **Use power tools only with specifically designated battery packs.** Use of any other battery packs may create a risk of injury and fire.
- **When battery pack is not in use, keep it away from other metal objects, like paper clips, coins, keys, nails, screws or other small metal objects, that can make a connection from one terminal to another.** Shorting the battery terminals together may cause burns or a fire.
- **Under abusive conditions, liquid may be ejected from the battery; avoid contact. If contact accidentally occurs, flush with water. If liquid contact eyes, additionally seek medical help.** Liquid ejected from the battery may cause irritation or burns.
- **Do not use a battery pack or tool that is damaged or modified.** Damaged or modified batteries may exhibit unpredictable behaviour resulting in fire, explosion or risk of injury.
- **Do not expose a battery pack or tool to fire or excessive temperature.** Exposure to fire or temperature above 265°F (130°C) may cause explosion.

- **Follow all charging instructions and do not charge the battery pack or tool outside the temperature range specified in the instructions.** Charging improperly or at temperatures outside the specified range may damage the battery and increase the risk of fire.

## SERVICE

- **Have your power tool serviced by a qualified repair person using only identical replacement parts.** This will ensure that the safety of the power tool is maintained.
- **Never service damaged battery packs.** Service of battery packs should only be performed by the manufacturer or authorized service providers.

## JIGSAW SAFETY WARNINGS

- **Hold the power tool by insulated gripping surfaces, when performing an operation where the cutting accessory may contact hidden wiring.** Cutting accessory contacting a “live” wire may make exposed metal parts of the power tool “live” and could give the operator an electric shock.
- **Use clamps or another practical way to secure and support the workpiece to a stable platform.** Holding the workpiece by hand or against your body leaves it unstable and may lead to loss of control.

## ADDITIONAL SAFETY GUIDELINES FOR JIGSAW

- **The label on your tool may include the following symbols. The symbols and their definitions are as follows:**

V ..... Volts

A ..... Amperes

Hz ..... Hertz

W ..... Watts

min ..... Minutes

— or d.c. .... Direct current

$n_0$  ..... No-load speed

.../min ..... Revolutions or reciprocations per minute

SPM ..... Strokes per minute



..... WARNING – To reduce the risk of injury, user must read instruction manual.



..... WARNING – To reduce the risk of injury always wear eye protection.



..... WARNING – To reduce the risk of injury always wear ear protection.



### WARNING!

To reduce the risk of electric shock or damage to the charger and battery, use only the Mastercraft® and PWR POD™ batteries and chargers listed.



Brand	Battery Pack	Charger
PWR POD™	2.0 Ah: 054-7563-0	90 W Fast Charger: 054-7565-6
	4.0 Ah: 054-7564-8	60 W x2 Dual-Port Charger: 054-7567-2
	5.0 Ah: 054-7558-4	150 W Four Port Fast Charger: 054-7571-0
	8.0 Ah: 054-7569-8	
Mastercraft®	1.5 Ah: 054-3124-0	45 W Charger: 054-3126-6
	2.0 Ah: 054-7553-4	90 W Fast Charger: 054-7559-2
	4.0 Ah: 054-7557-6	60 W x2 Dual-Port Charger: 054-8299-4
	5.0 Ah: 054-2434-8	

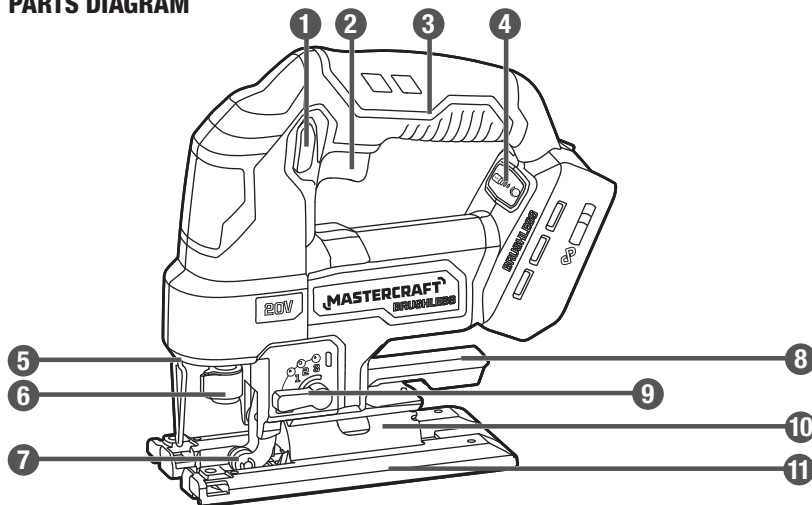
Batteries with an Ah of 4.0 or higher are recommended for optimal runtime and performance.

- **For best results, your battery tool should be stored and used in a location where the temperature is more than 41°F (5°C) but less than 104°F (40°C).** Do not store outside or in vehicles.

**SAVE THESE INSTRUCTIONS!**

**PACKAGE CONTENTS:**

Jigsaw, wood cutting blade, metal cutting blade, vacuum adaptor and instruction manual

**KEY PARTS DIAGRAM**

No.	Description
1	Lock-off Button
2	Variable-speed Trigger Switch
3	Handle Grip
4	Speed Control Panel
5	LED Worklight
6	Blade Clamp

No.	Description
7	Blade Roller Guide
8	Bevel Lever
9	Orbit-action Selector Lever
10	Dust Collection Port
11	Base Plate

Before attempting to use this tool, become familiar with all of its operating features and safety requirements. For optimum performance and safety, read the following operating instructions carefully before using.

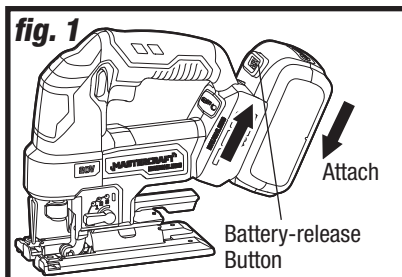
**WARNING!**

- Remove the jigsaw from the package and examine it carefully. Do not discard the carton or any packaging material until all parts have been examined.
- If any part of the jigsaw is missing or damaged, do not attach the battery pack to the tool or use the tool until the part has been repaired or replaced. Failure to heed this warning could result in serious injury.
- Do not let familiarity with the jigsaw cause a lack of alertness. A fraction of a second of carelessness is enough to cause severe injury.
- Do not attempt to modify this tool or create accessories not recommended for use with this tool. Any such alteration or modification is misuse and could result in a hazardous condition leading to possible serious injury.
- To prevent accidental starting that could cause serious personal injury, always remove the battery pack from the tool when assembling parts.

## OPERATING INSTRUCTIONS

### ATTACHING THE BATTERY PACK (fig. 1)

1. Release and ensure the trigger switch is in the "OFF" position and the lock-off button is pressed to the right.
2. Align the raised rib on the battery pack with the grooves in the tool, and then slide the battery pack onto the tool.
3. Make sure that the latch on the battery pack snaps into place, and that the battery pack is attached securely to the tool before beginning operation.



### DETACHING THE BATTERY PACK (fig. 1)

1. Release and ensure the trigger switch is in the "OFF" position and the lock-off button is pressed to the right.
2. Depress the battery-release button, located on the front of the battery pack, to release the battery pack.
3. Pull the battery pack out and remove it from the tool.

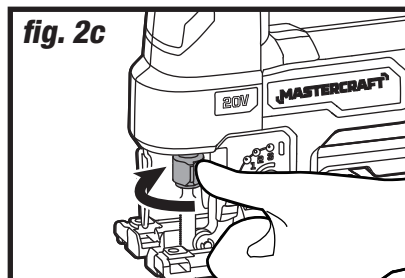
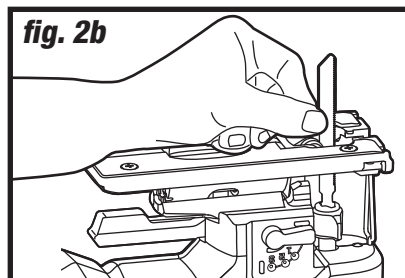
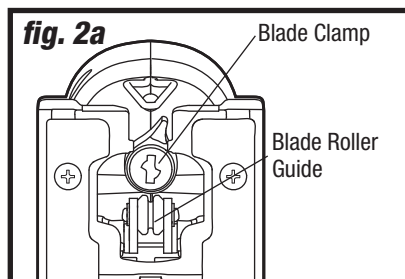


### WARNING!

- Avoid the possibility of accidental starting. Always take care not to activate the trigger switch when you are attaching the battery pack or performing other adjustments to the tool.

## INSTALLING AND REMOVING THE SAW BLADE (fig. 2a - fig. 2c)

1. Detach the battery pack from the tool.
2. Turn the tool upside down.
3. Before installing the blade, examine the blade clamp and make sure that the blade clamp follow the fig. 2a. If not, rotate the blade clamp to make it accord with the fig. 2a. Then simply insert the saw blade with the back of the blade resting in the groove of the blade roller guide (fig. 2b). The blade clamp will automatically rotate clockwise to lock the blade. The tool accepts most commonly available T-shank blades.
4. Verify that the blade has been secured in place firmly by pulling on the blade.
5. To remove a blade, point blade camp to the table or ground and rotate blade clamp clockwise as shown in fig. 2c. The blade will automatically eject from the blade clamp. This allow you to remove the hot blade without touching it after work.



### WARNING!

- When changing the blade, always wear gloves. When removing the blade, always point the blade clamp to the table or ground.
- The blade can be dangerously hot after working. Allow the blade to cool after use.

### CAUTION!

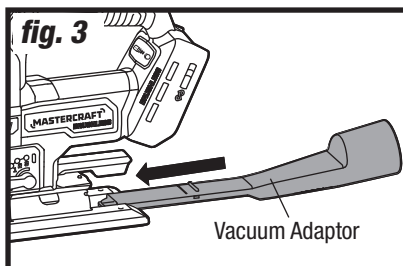
- Check to see if the blade is correctly fastened. An incorrectly or insecurely fastened blade can become loose during operation and cause a hazard.
- Always ensure that the tool is turned OFF before making any adjustments and installing any attachments.
- Make sure that the orbit-action selector is on 'Setting 0' when changing the blade.

### DUST EXTRACTION (fig. 3)

To use this feature, align vacuum adaptor with the dust collection port on the base plate and insert it.

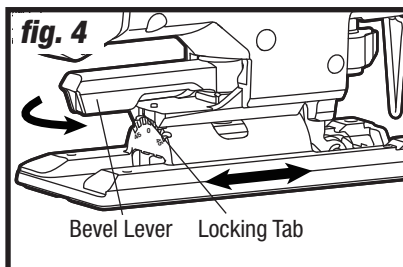
To remove the vacuum adaptor, simply lift it upwards and pull from the dust collection port.

The vacuum adaptor packed with this jigsaw is compatible with Ø 1 1/4" (32 mm) vacuum hoses or adapters to connect a vacuum cleaner.



### ADJUSTING THE BASE PLATE FOR BEVEL CUTTING (fig. 4)

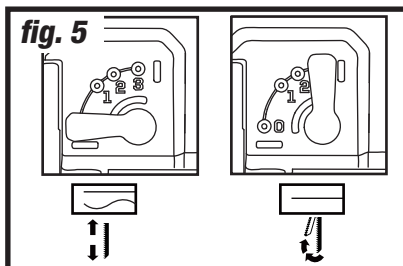
1. Rotate the bevel lever to unlock the base plate.
2. The adjustment is locked by the locking tab on the tool. Move the base plate forward so that the base plate can be beveled.
3. The base plate can be bevelled to the left or to the right and locked to cut angles at 0°, ±15°, ±30° and ±45°.
4. When the desired bevel angle is achieved, pull the base backward to engage the locking tab into a detent and retighten the base-adjustment lever to maintain the bevel angle.



### ORBITAL-ACTION SETTINGS (fig. 5)

Your tool is equipped with four orbital-action settings for optimal adaptation to the cutting speed, cutting capacity, cutting pattern, and the material being sawed. The orbital action can be adjusted with the control lever:

- Setting 0 – No orbital action
- Setting 1 – Small orbital action
- Setting 2 – Medium orbital action
- Setting 3 – Maximum orbital action



The optimal orbital action setting for the respective application can be determined through practical testing. The following recommendations apply:



### WARNING!

- Do not use a dust extraction system or a vacuum cleaner when cutting metal. Sparks may ignite residual wood dust.

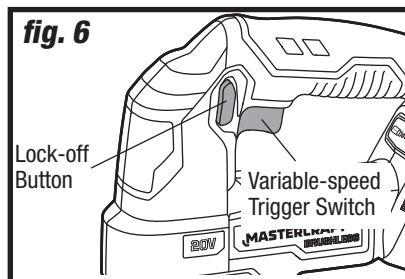
Orbit setting	Orbit Action	Material Type	Suggested Blade Type
Setting "0"	No orbit	Counter top, laminate board	Wood Cutting Blade
		Thin sheet metal	Metal Cutting Blade
Setting "1"	Minimal orbit	Plastics and PVC	Wood Cutting Blade
Setting "2"	Medium orbit	Plywood, decking and hardwood	Wood Cutting Blade
Setting "3"	Maximum orbit	General lumber and soft wood	Wood Cutting Blade

### TURNING ON AND OFF (fig. 6)

1. To turn the tool ON, press the lock-off button to left, then press the trigger switch.
2. To turn the tool OFF, release the trigger switch, then press the lock-off button to right to lock the trigger switch.

### VARIABLE-SPEED TRIGGER SWITCH (fig. 6)

Your tool is equipped with a variable-speed trigger switch. The speed can be adjusted from the minimum to maximum SPM by the pressure you apply to the trigger. Apply more pressure to increase the speed and decrease pressure to the decrease speed.



### NOTICE:

- Always make test cuts in scrap material first to determine the best setting. In order to reach full orbital action, the blade must be facing straight forward, the back of the blade must be resting in the groove of the roller, and the foot must be positioned all the way forward. Orbital action is not detectable when the saw is running freely. The saw must be cutting in order for orbital action to occur. The cutting speed is easier to see when cutting thicker material.



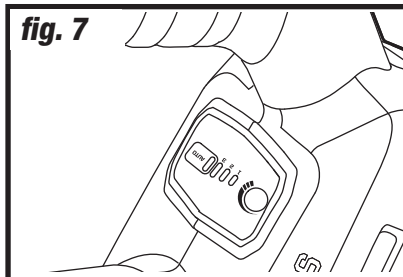
### WARNING!

- To reduce the risk of injury, always allow the jigsaw to come to a complete stop before changing the orbital function setting.

### SPEED CONTROL PANEL SETTINGS (fig. 7)

Your tool is equipped with a speed control panel, located near the rear end of the handle. It consists of 3-speed LED indicators and 1 AUTO LED indicator. You can use the SPEED button to select one of the 3 speed ranges and the AUTO function based on the material to be cut. To select the desired speed range:

1. Attach the battery to the jigsaw.
2. Press the lock-off button to the left and slightly press the variable-speed trigger switch to active LED indicators on the speed control panel. Then release the trigger switch.
3. Press the "SPEED" button to choose the speed range. When all 3 speed indicators are illuminated, press the "SPEED" button once more will allow the tool to enter "AUTO" mode. This mode will allow the jigsaw automatically to reduce the no-load speed to reduce the vibration. Once the tool engages the workpiece, the speed will reach the highest level. This makes it easy to position the tool at the beginning of the cut.



The table below shows the relationship between different speed presets, LED indicators and speed ranges.

LED indicator status	Speed preset	Speed/SPM	Recommended material to be cut
	1	0 - 1500	Thin sheet metal
	2	0 - 2300	Plastics, aluminum
	3	0 - 3000	Plywood, decking and hardwood
	3+AUTO	800 (without load) 3400 (with load)	Wood, decking and hardwood

4. LED indicators will automatically turn off within 10 seconds after the operation is finished.

### ELECTRICAL BRAKE

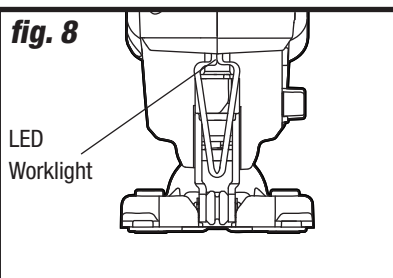
When the trigger is released it activates the electrical brake to stop the blade quickly. This feature is especially useful when making repetitive cuts.

### NOTICE:

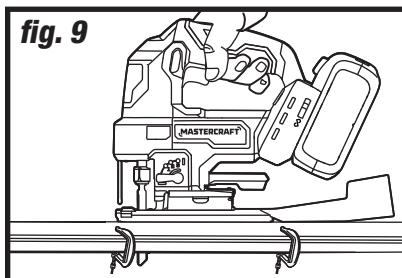
- Your tool is equipped with a memory function of speed and AUTO setting. It will revert to the last used mode when turned on again.

**LED WORKLIGHT (fig. 8)**

The LED worklight will illuminate when the trigger switch is slightly pressed before the tool starts running and turn off approximately 10 seconds after variable-speed trigger switch is released. This provides additional light on the surface of the workpiece for operation in lower light situations.

**fig. 8****GENERAL CUTTING (fig. 9)**

1. Firmly clamp the workpiece in place.
2. Use the appropriate type and size of blade for the workpiece.
3. Check the clearance behind the workpiece and ensure that the blade will not impact another surface.
4. Clearly mark the line of the cut.
5. Hold the saw firmly. Make sure that your hand is on the insulated gripping areas only.
6. Rest the base plate on the workpiece so that the blade is not in contact with the workpiece.
7. Turn on the jigsaw and bring it to the maximum desired cutting speed before applying the blade to the workpiece.
8. Slowly move the jigsaw into the workpiece.
9. Do not force the tool. Keep the base plate flat against the workpiece while cutting. Use only enough steady pressure on the blade to keep the saw cutting.
10. Reduce pressure as the blade comes to the end of the cut.
11. Allow the saw to come to a complete stop before removing the blade from the workpiece.
12. If sawing fiberglass, plaster, wallboard, or spackling compound, clean the saw motor vents frequently with a vacuum or compressed air. Always wear safety goggles when cleaning tools using compressed air.

**fig. 9****NOTICE:**

- The worklight is for lighting the immediate work surface and is not intended to be used as a flashlight.



### METAL CUTTING

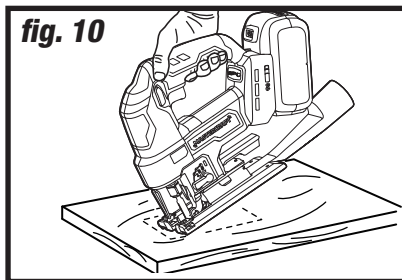
When cutting metal, always clamp down the material. Be careful to move the saw along slowly. Use lower speeds. Do not twist, bend, or force the blade. If the saw jumps or bounces, use a blade with finer teeth. If the blade is clogged when cutting soft metal, use a blade with coarser teeth.

For easier cutting, lubricate the blade with a stick of cutting wax, if available, or use cutting oil when cutting steel. Never use gasoline!! Thin metal should be sandwiched between two pieces of wood or tightly clamped onto a single piece of wood (wood on top of the metal). Draw the cut lines or design on the top piece of wood.

### PLUNGE CUTTING (fig. 10)

Plunge cutting is useful and time-saving for making rough openings in soft materials. It makes it unnecessary to drill a hole for an inside or pocket cut.

1. Draw cutting lines for the opening.
2. Hold the saw firmly and tilt it forward so the toe of the base plate rests on the workpiece.
3. Make sure that the blade is well clear of the workpiece.
4. With the toe of the shoe plate held firmly against the workpiece to prevent side wobble, start the saw and then gradually lower the blade into the workpiece.
5. When the blade touches the workpiece, continue pressing down on the toe of the shoe plate.
6. Slowly pivot the saw like a hinge until the blade cuts through the workpiece and the shoe plate rests flat on the workpiece.
7. Then begin sawing in the usual manner along the cut line.



### NOTICE:

- Always apply a steady, firm, downward pressure on the front of the saw as you cut. This will keep the saw blade from jumping out of the workpiece.



### WARNING!

- Before attempting to use this tool, become familiar with all of its operating features and safety requirements.
- Always securely clamp and support the workpiece. Always maintain proper control of the jigsaw. Failure to clamp and support the workpiece and loss of control of the saw could result in serious injury.

## MAINTENANCE

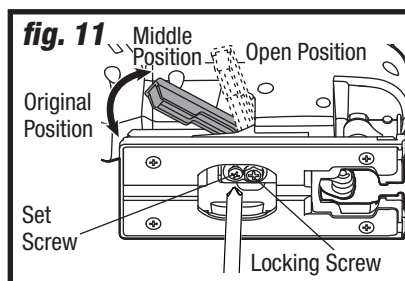
### BEFORE EACH USE

1. Inspect the jigsaw, the variable-speed trigger switch and the battery pack for damage.
2. Check for damaged, missing, or worn parts.
3. Check for loose screws, misalignment or binding of moving parts, or any other condition that may affect the operation.
4. If abnormal vibration or noise occurs, turn the tool off immediately and have the problem corrected before further use. Remove the battery from the power tool before cleaning or performing any maintenance.

### RETIGHTENING THE BASE (fig. 11)

If the bevel lock lever loosens during use, set its tightness following the procedure below:

1. Detach the battery from the tool.
2. Place the bevel lock lever in the middle position.
3. Loosen the locking screw counter-clockwise with a screwdriver (not included) and remove it with the washer.
4. Tighten the set screw finger tight clockwise with a screwdriver.
5. Position the washer back to its original place and tighten the locking screw with a screwdriver.
6. Return the bevel lock lever to its original position to secure the base in place.



### CLEANING

Using compressed air may be the most effective cleaning method. Always wear safety goggles when cleaning tools using compressed air.

### STORAGE

Store the tool indoors in a place that is inaccessible to children. Keep away from corrosive agents.



### WARNING!

- To avoid personal injury, always remove the battery pack from the tool when cleaning or performing any maintenance.
- Do not let brake fluids, gasoline, petroleum-based products, penetrating oil, etc., come into contact with plastic parts. These substances contain chemicals that can damage, weaken, or destroy plastic.
- When servicing, use only identical replacement parts. The use of any other parts may create a hazard or cause damage to the product.
- Use only accessories that are recommended for this jigsaw by the manufacturer. Accessories that may be suitable for one tool may become hazardous when used with another tool.
- To ensure safety and reliability, all repairs should be performed by a qualified service technician.

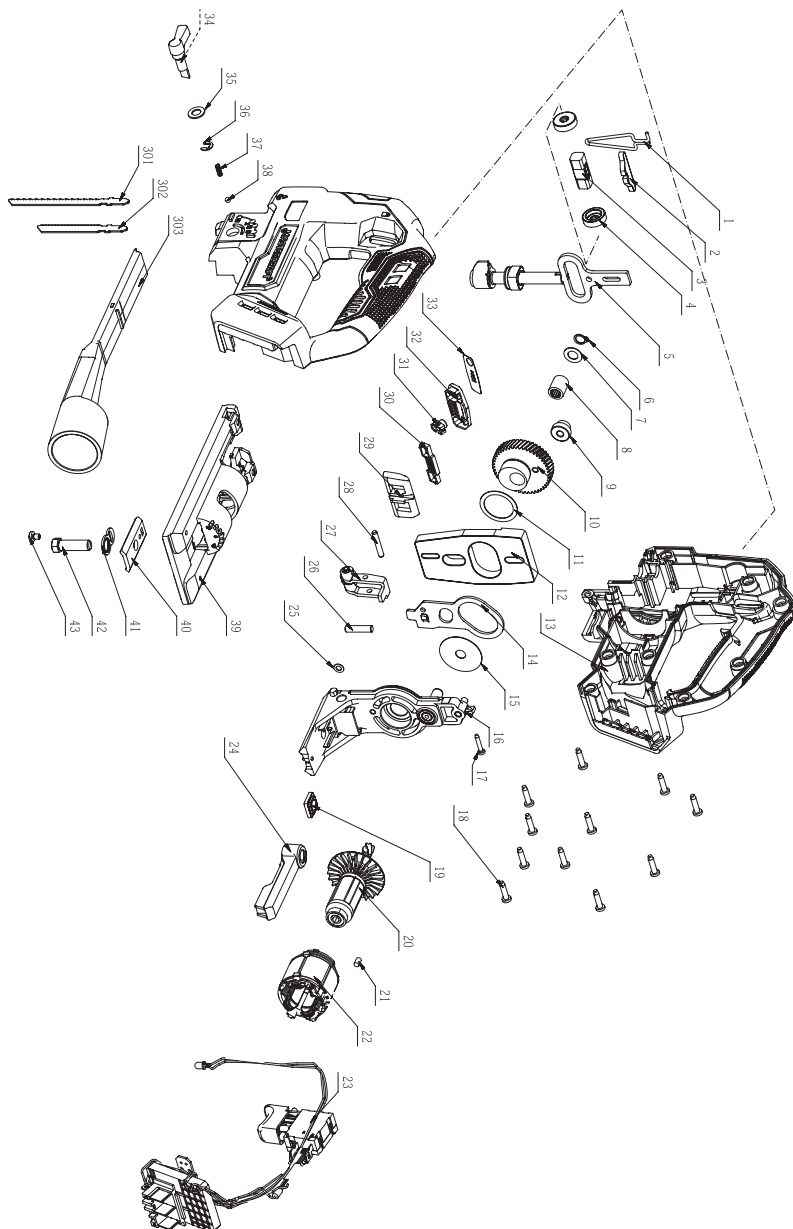
## TROUBLESHOOTING

Problem	Possible Causes	Solution
Tool will not start.	Battery pack is depleted.	Charge the battery.
	The battery is overloaded.	Decrease the load on the tool and restart.
	The battery is overheated.	Cool the battery under air flow.
The blade cannot be removed.	Saw dust in the blade clamp.	Clean the clamp slot with a brush.
Cutting is difficult.	Saw blade is worn.	Replace the saw blade.

If the problem remains unsolved after performing the checks described above, call the toll-free helpline at 1-800-689-9928.

## EXPLODED VIEW

## PARTS LIST



No.	Part No.	Description
1	3650004003	Wire Guard
2	3705624001	Sping Piece
3	3520427001	Upper Sliding Bearing
4	3520386001	Bush
5	2828785001	Quick Clamp Assembly
6	5660007001	Circlips For Shaft
7	3700183001	Washer C
8	5700029001	Needle Bearing
9	5700322001	Bushing
10	2825789001	Gear Set
11	3700181001	Washer A
12	3521224001	Counterweight
13	3900729001	L R Housing Set
14	3700240002	Pendulum Plate
15	3700184001	Washer D
16	2826911003	Bearing Support ASSY
17	5610241001	Screw
18	5610290005	Tapping Screw
19	3522152001	Clamp Washer
20	2751565001	Rotor & Pinion Assembly
21	3121038001	Rubber Stick
22	2740539003	Stator
23	2831579001	Main Electric Assembly

No.	Part No.	Description
24	3402973002	Wrench
25	5650006003	Plain Washer
26	5670326001	Pendulum Pin
27	2827234001	Roller Support Set
28	5670317001	Pin
29	3129702001	Switch Button
30	3133126001	Seal Cover
31	3133403002	Rubber Push Button
32	3133356001	Cover Plate
33	3709173001	Indicator Label
34	3130735001	Pendulum Lever
35	3700352001	Washer
36	5660005001	E Ring
37	3660535001	Compression Spring
38	5700045001	Steel Ball
39	2827077003	Base Plate Assembly
40	3706268001	Clamp Washer
41	5650776001	Lock Washer
42	5640378001	Hexagon Head Bolt
43	5620036003	Screw
301	3810006123	Jigsaw Blade
302	3810006122	Jigsaw Blade
303	3133388001	Vacuum Adapter

If any parts are missing or damaged, or if you have any questions, please call the Toll-free Helpline, at 1-800-689-9928.

This Mastercraft® product is guaranteed for a period of **three (3) years from the date of original retail purchase** against defects in workmanship and materials, except for the following components:

- a) Component A: Batteries, chargers and carrying case, which are guaranteed for a period of two (2) years from the date of original retail purchase against defects in workmanship and materials;
- b) Component B: Accessories, which are guaranteed for a period of one (1) year from the date of original retail purchase against defects in workmanship and materials.

Subject to the conditions and limitations described below, this product, if returned to us with proof of purchase within the stated warranty period and if covered under this warranty, will be repaired or replaced (with the same model, or one of equal value or specification), at our option. We will bear the cost of any repair or replacement and any costs of labour relating thereto.

**These warranties are subject to the following conditions and limitations:**

- a) a bill of sale verifying the purchase and purchase date must be provided;
- b) this warranty will not apply to any product or part thereof which is worn or broken or which has become inoperative due to abuse, misuse, accidental damage, neglect or lack of proper installation, operation or maintenance (as outlined in the applicable owner's manual or operating instructions) or which is being used for industrial, professional, commercial or rental purposes;
- c) this warranty will not apply to normal wear and tear or to expendable parts or accessories that may be supplied with the product that are expected to become inoperative or unusable after a reasonable period of use;
- d) this warranty will not apply to routine maintenance and consumable items such as, but not limited to, fuel, lubricants, vacuum bags, blades, belts, sandpaper, bits, fluids, tune-ups or adjustments;
- e) this warranty will not apply where damage is caused by repairs made or attempted by others (i.e., persons not authorized by the manufacturer);
- f) this warranty will not apply to any product that was sold to the original purchaser as a reconditioned or refurbished product (unless otherwise specified in writing);
- g) this warranty will not apply to any product or part thereof if any part from another manufacturer is installed therein or any repairs or alterations have been made or attempted by unauthorized persons;
- h) this warranty will not apply to normal deterioration of the exterior finish, such as, but not limited to, scratches, dents, paint chips, or to any corrosion or discolouring by heat, abrasive and chemical cleaners; and
- i) this warranty will not apply to component parts sold by and identified as the product of another company, which shall be covered under the product manufacturer's warranty, if any.

## Additional Limitations

This warranty applies only to the original purchaser and may not be transferred. Neither the retailer nor the manufacturer shall be liable for any other expense, loss or damage, including, without limitation, any indirect, incidental, consequential or exemplary damages arising in connection with the sale, use or inability to use this product.

## Notice to Consumer

This warranty gives you specific legal rights, and you may have other rights, which may vary from province to province. The provisions contained in this warranty are not intended to limit, modify, take away from, disclaim or exclude any statutory warranties set forth in any applicable provincial or federal legislation.

Made in China

Imported by

Mastercraft Canada Toronto, Canada M4S 2B8

