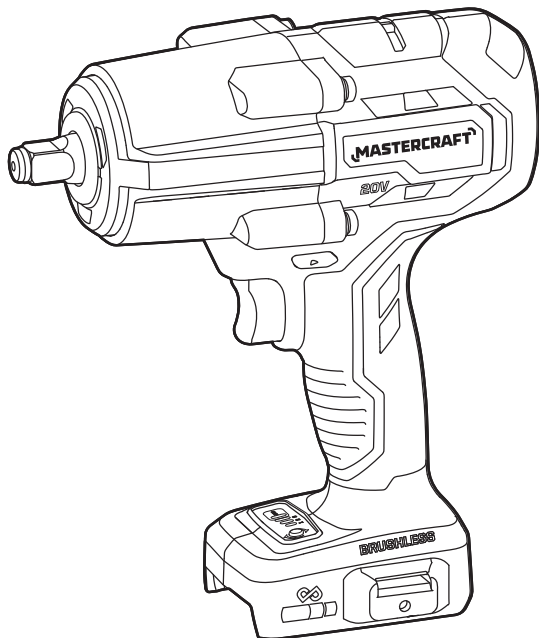


MASTERCRAFT™/MC

BRUSHLESS 1/2" (13 mm) IMPACT WRENCH

054-8706-6



IMPORTANT:

Read and understand this instruction manual thoroughly before using the product.

INSTRUCTION MANUAL

TABLE OF CONTENTS

Technical Specifications	4
Safety Guidelines	5
Key Parts Diagram	10
Operating Instructions	11
Maintenance	16
Troubleshooting	17
Parts List	18
Warranty	20

NOTE:

If any parts are missing or damaged, or if you have any questions, please call our toll-free helpline at 1-800-689-9928.



SAVE THESE INSTRUCTIONS

- This manual contains important safety and operating instructions. Read all instructions and follow them with use of this product.

TECHNICAL SPECIFICATIONS

Rated Voltage	20 V d.c. max*
Output Driver	1/2" (13 mm) Square
No-load Speed	0 – 1850 RPM
Impact Rate	0 – 2550 BPM
Max. Fastening Torque	450 ft-lb
Max. Breakaway Torque	600 ft-lb

*Maximum battery voltage without workload; with workload nominal voltage is 18 V.

Recommend using tool with Mastercraft® and PWR POD™ 20 V max* Lithium-ion 4.0 Ah battery (054-7557-6 and 054-7564-8; sold separately) for optimal performance.

COMPATIBLE BATTERIES AND CHARGERS

Brand	Battery Pack	Charger
PWR POD™	2.0 Ah: 054-7563-0	90 W Fast Charger: 054-7565-6
	4.0 Ah: 054-7564-8	60 W x2 Dual-Port Charger: 054-7567-2
	5.0 Ah: 054-7558-4	150 W Four Port Fast Charger: 054-7571-0
	8.0 Ah: 054-7569-8	
Mastercraft®	1.5 Ah: 054-3124-0	45 W Charger: 054-3126-6
	2.0 Ah: 054-7553-4	90 W Fast Charger: 054-7559-2
	4.0 Ah: 054-7557-6	60 W x2 Dual-Port Charger: 054-8299-4
	5.0 Ah: 054-2434-8	

Batteries with an Ah of 4.0 or higher are recommended for optimal runtime and performance.

SAFETY GUIDELINES:



WARNING!

Safety symbols in this Instruction Manual are used to flag possible dangers. The safety symbols and their explanations require your full understanding. The safety warnings do not, by themselves, eliminate any danger, nor are they substitutes for proper accident prevention measures.



WARNING!

This Safety Alert Symbol indicates caution, warning, or danger. Failure to obey a safety warning can result in serious injury to yourself or others. To reduce the risk of injury, fire, or electric shock, always follow the safety precautions.

KNOW YOUR TOOL

To operate this tool, carefully read this Instruction Manual and all labels affixed to the impact wrench before using. Keep this instruction manual available for future reference.

IMPORTANT

This tool should only be serviced by a qualified service technician. For more information, call the toll-free helpline at 1-800-689-9928.

READ ALL INSTRUCTIONS THOROUGHLY

SAVE THESE INSTRUCTIONS

GENERAL POWER TOOL SAFETY WARNINGS



WARNING!

Read all safety warnings, instructions, illustrations and specifications provided with this power tool. Failure to follow all instructions listed below may result in electric shock, fire and/or serious injury.

SAVE ALL WARNINGS AND INSTRUCTIONS FOR FUTURE REFERENCE.

The term “power tool” in the warnings refers to your mains-operated (corded) power tool or battery-operated (cordless) power tool.

WORK AREA SAFETY

- **Keep work area clean and well lit.** Cluttered or dark areas invite accidents.
- **Do not operate power tools in explosive atmospheres, such as in the presence of flammable liquids, gases or dust.** Power tools create sparks, which may ignite the dust or fumes.
- **Keep children and bystanders away while operating a power tool.** Distractions can cause you to lose control.

ELECTRICAL SAFETY

- **Power tool plugs must match the outlet. Never modify the plug in any way. Do not use any adapter plugs with earthed (grounded) power tools.** Unmodified plugs and matching outlets will reduce risk of electric shock.
- **Avoid body contact with earthed or grounded surfaces, such as pipes, radiators, ranges and refrigerators.** There is an increased risk of electric shock if your body is earthed or grounded.
- **Do not expose power tools to rain or wet conditions.** Water entering a power tool will increase the risk of electric shock.
- **Do not abuse the cord. Never use the cord for carrying, pulling or unplugging the power tool. Keep cord away from heat, oil, sharp edges or moving parts.** Damaged or entangled cords increase the risk of electric shock.
- **When operating a power tool outdoors, use an extension cord suitable for outdoor use.** Use of a cord suitable for outdoor use reduces the risk of electric shock.
- **If operating a power tool in a damp location is unavoidable, use a ground-fault circuit interrupter (GFCI) protected supply.** Use of a GFCI reduces the risk of electric shock.

PERSONAL SAFETY

- **Stay alert, watch what you are doing and use common sense when operating a power tool. Do not use a power tool while you are tired or under the influence of drugs, alcohol or medication.** A moment of inattention while operating power tools may result in serious personal injury.
- **Use personal protective equipment. Always wear eye protection.** Protective equipment such as a dust mask, non-skid safety shoes, hard hat or hearing protection used for appropriate conditions will reduce personal injuries.
- **Prevent unintentional starting. Ensure the switch is in the off-position before connecting to power source and/or battery pack, picking up or carrying the tool.** Carrying power tools with your finger on the switch or energizing power tools that have the switch on invites accidents.
- **Remove any adjusting key or wrench before turning the power tool on.** A wrench or a key left attached to a rotating part of the power tool may result in personal injury.
- **Do not overreach. Keep proper footing and balance at all times.** This enables better control of the power tool in unexpected situations.
- **Dress properly. Do not wear loose clothing or jewellery. Keep your hair and clothing away from moving parts.** Loose clothes, jewellery or long hair can be caught in moving parts.
- **If devices are provided for the connection of dust extraction and collection facilities, ensure these are connected and properly used.** Use of dust collection can reduce dust-related hazards.
- **Do not let familiarity gained from frequent use of tools allow you to become complacent and ignore tool safety principles.** A careless action can cause severe injury within a fraction of a second.

POWER TOOL USE AND CARE

- **Do not force the power tool. Use the correct power tool for your application.** The correct power tool will do the job better and safer at the rate for which it was designed.
- **Do not use the power tool if the switch does not turn it on and off.** Any power tool that cannot be controlled with the switch is dangerous and must be repaired.
- **Disconnect the plug from the power source and/or remove the battery pack, if detachable, from the power tool before making any adjustments, changing accessories, or storing power tools.** Such preventive safety measures reduce the risk of starting the power tool accidentally.
- **Store idle power tools out of the reach of children and do not allow persons unfamiliar with the power tool or these instructions to operate the power tool.** Power tools are dangerous in the hands of untrained users.
- **Maintain power tools and accessories. Check for misalignment or binding of moving parts, breakage of parts and any other condition that may affect the power tool's operation. If damaged, have the power tool repaired before use.** Many accidents are caused by poorly maintained power tools.
- **Keep cutting tools sharp and clean.** Properly maintained cutting tools with sharp cutting edges are less likely to bind and are easier to control.
- **Use the power tool, accessories and tool bits etc. in accordance with these instructions, taking into account the working conditions and the work to be performed.** Use of the power tool for operations different from those intended could result in a hazardous situation.
- **Keep handles and grasping surfaces dry, clean and free from oil and grease.** Slippery handles and grasping surfaces do not allow for safe handling and control of the tool in unexpected situations.

BATTERY TOOL USE AND CARE

- **Recharge only with the charger specified by the manufacturer.** A charger that is suitable for one type of battery pack may create a risk of fire when used with another battery pack.
- **Use power tools only with specifically designated battery packs.** Use of any other battery packs may create a risk of injury and fire.
- **When battery pack is not in use, keep it away from other metal objects, like paper clips, coins, keys, nails, screws or other small metal objects, that can make a connection from one terminal to another.** Shorting the battery terminals together may cause burns or a fire.
- **Under abusive conditions, liquid may be ejected from the battery; avoid contact. If contact accidentally occurs, flush with water. If liquid contact eyes, additionally seek medical help.** Liquid ejected from the battery may cause irritation or burns.
- **Do not use a battery pack or tool that is damaged or modified.** Damaged or modified batteries may exhibit unpredictable behaviour resulting in fire, explosion or risk of injury.
- **Do not expose a battery pack or tool to fire or excessive temperature.** Exposure to fire or temperature above 265°F (130°C) may cause explosion.

- **Follow all charging instructions and do not charge the battery pack or tool outside the temperature range specified in the instructions.** Charging improperly or at temperatures outside the specified range may damage the battery and increase the risk of fire.

SERVICE

- **Have your power tool serviced by a qualified repair person using only identical replacement parts.** This will ensure that the safety of the power tool is maintained.
- **Never service damaged battery packs.** Service of battery packs should only be performed by the manufacturer or authorized service providers.

IMPACT WRENCH SAFETY WARNINGS

- **Hold power tools by insulated gripping surfaces, when performing an operation where the cutting accessory may contact hidden wiring.** Cutting accessory contacting a “live” wire may make exposed metal parts of the power tool “live” and could give the operator an electric shock.

ADDITIONAL SAFETY GUIDELINES FOR IMPACT WRENCH

- **The label on your tool may include the following symbols. The symbols and their definitions are as follows:**

V Volts


A Amperes

Hz Hertz

W Watts

min Minutes

lbs Pounds

 or d.c. Direct current

n_0 No-load speed

.../min Revolutions or reciprocation per minute

RPM Revolutions per minute

BPM Beats per minute



..... WARNING – To reduce the risk of injury, user must read instruction manual.



..... WARNING – To reduce the risk of injury always wear eye protection.



..... WARNING – To reduce the risk of injury always wear ear protection.



WARNING!

To reduce the risk of electric shock or damage to the charger and battery, use only the Mastercraft® and PWR POD™ batteries and chargers listed.

Brand	Battery Pack	Charger
PWR POD™	2.0 Ah: 054-7563-0	90 W Fast Charger: 054-7565-6
	4.0 Ah: 054-7564-8	60 W x2 Dual-Port Charger: 054-7567-2
	5.0 Ah: 054-7558-4	150 W Four Port Fast Charger: 054-7571-0
	8.0 Ah: 054-7569-8	
Mastercraft®	1.5 Ah: 054-3124-0	45 W Charger: 054-3126-6
	2.0 Ah: 054-7553-4	90 W Fast Charger: 054-7559-2
	4.0 Ah: 054-7557-6	60 W x2 Dual-Port Charger: 054-8299-4
	5.0 Ah: 054-2434-8	

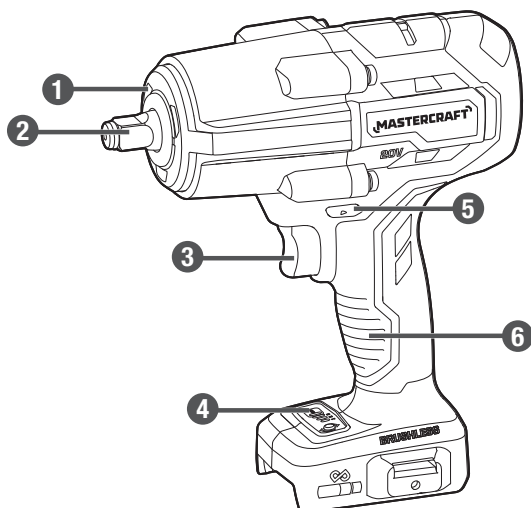
Batteries with an Ah of 4.0 or higher are recommended for optimal runtime and performance.

- **For best results, your battery tool should be stored and used in a location where the temperature is more than 41°F (5°C) but less than 104°F (40°C).** Do not store outside or in vehicles.

SAVE THESE INSTRUCTIONS!

PACKAGE CONTENTS:

Impact wrench and instruction manual

KEY PARTS DIAGRAM

No.	Description
1	LED Worklight
2	1/2" (13 mm) Square Drive
3	Variable-speed Trigger Switch

No.	Description
4	Mode-select Panel
5	Direction-of-rotation Selector
6	Handle Grip

Before attempting to use this tool, become familiar with all of its operating features and safety requirements. For optimum performance and safety, read the following operating instructions carefully before using.

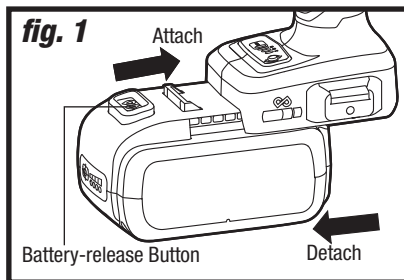
**WARNING!**

- Remove the impact wrench from the package and examine it carefully. Do not discard the carton or any packaging material until all parts have been examined.
- If any part of the impact wrench is missing or damaged, do not attach the battery pack to the tool or use the tool until the part has been repaired or replaced. Failure to heed this warning could result in serious injury.
- Do not let familiarity with the impact wrench cause a lack of alertness. A fraction of a second of carelessness is enough to cause severe injury.
- Do not attempt to modify this tool or create accessories not recommended for use with this tool. Any such alteration or modification is misuse and could result in a hazardous condition leading to possible serious injury.
- To prevent accidental starting that could cause serious personal injury, always remove the battery pack from the tool when assembling parts.

OPERATING INSTRUCTIONS

ATTACHING THE BATTERY PACK (fig. 1)

1. Lock the variable-speed trigger switch "OFF" on the tool by placing the direction-of-rotation selector in the centre position.
2. Align the raised rib on the battery pack with the grooves in the tool, and then slide the battery pack onto the tool.
3. Make sure that the latch on the battery pack snaps into place, and that the battery pack is attached securely to the tool before beginning operation



DETACH THE BATTERY PACK (fig. 1)

1. Lock the variable-speed trigger switch "OFF" on the tool by placing the direction-of-rotation selector in the centre position.
2. Depress the battery-release button, located on the front of the battery pack, to release the battery pack.
3. Pull the battery pack out and remove it from the tool.

NOTICE:

- When placing the battery pack on the tool, be sure that the raised rib on the battery pack aligns with the groove inside the tool and that the latches snap into place properly. Improper attachment of the battery pack can cause damage to internal components.



WARNING!

- Avoid the possibility of accidental starting. Always take care not to activate the trigger switch when you are attaching the battery pack or performing other adjustments to the tool.

TURN THE TOOL ON/OFF (fig. 2)

Position the direction-of-rotation selector to the left or right depending on the working situation. To turn the tool ON, depress the variable-speed trigger switch. To turn it OFF, release the variable-speed trigger switch. Reposition the direction-of-rotation selector to the centre to lock the tool off.

VARIABLE SPEED (fig. 2)

The variable-speed trigger switch delivers higher speed with increased trigger pressure and lower speed with decreased trigger pressure.

DIRECTION-OF-ROTATION SELECTOR (FORWARD/CENTRE-LOCK/REVERSE) (fig. 2 – fig. 3)

The direction of rotation is reversible and is controlled with a selector located above the variable-speed trigger switch. With the impact wrench held in normal operating position:

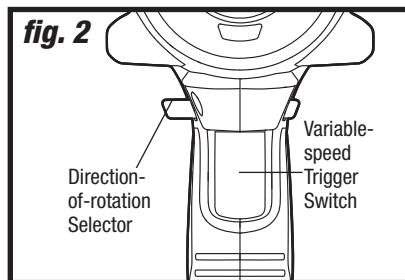
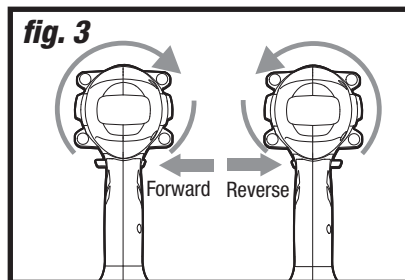
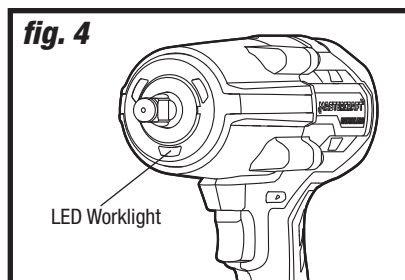
Position the direction-of-rotation selector to the left of the tool for forward rotation.

Position the direction-of-rotation selector to the right of the tool for reverse rotation.

Position the direction-of-rotation selector in the centre to lock the tool off.

LED WORKLIGHT (fig. 4)

The LED worklight, located on the head of the impact wrench will illuminate when the trigger switch is slightly depressed before the tool starts, and will automatically turn off about 10 seconds after the trigger switch is released. This provides additional light on the surface of the workpiece for operation in lower light situations.

fig. 2**fig. 3****fig. 4****NOTICE:**

- To prevent gear damage, always allow the impact wrench to come to a complete stop before changing the direction of rotation.
- The impact wrench will not operate unless the direction-of-rotation selector is engaged fully to the left or right.

NOTICE:

- The worklight is for lighting the immediate work surface and is not intended to be used as a flashlight.

ELECTRIC BRAKE

To stop the tool, release the trigger switch and allow the chuck to come to a complete stop. The electric brake quickly stops rotation. This feature engages automatically when you release the trigger switch.

MODE SELECTOR (fig. 5)

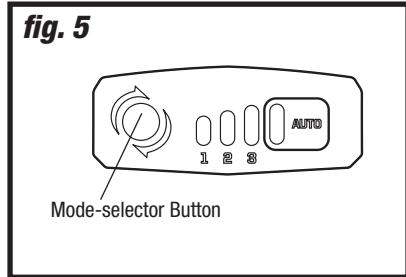
The tool is designed with 3-speed and auto-stop functions.

1. Attach the battery pack to the impact wrench.
2. Position the direction-of-rotation selector to the left of the tool (forward rotation), and slightly press the trigger switch once to turn on the mode-indicator light.
3. Press the mode-selector button; the mode-indicator light will change in 4 steps, speed setting 1, speed setting 2, speed setting 3 and auto mode.

Speed setting 1, the tool will provide lowest speed and torque.
Speed setting 2, the tool will provide medium speed and torque.
Speed setting 3, the tool will provide maximum speed and torque.

Auto mode will provide maximum torque and additional functions. When the bolt/nut is sufficiently tight, the tool stops the impact and rotation after approximately one second. When the bolt/nut is loosened, the tool stops the impact and rotation after approximately one second. Release the trigger switch first and then press it again; the tool will rotate at low speed to remove the bolt/nut.

fig. 5



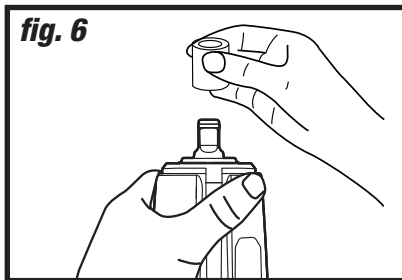
NOTICE:

- The mode selector panel has a memory system. It will automatically return to the last mode you selected when you turn on the mode-indicator light.

INSTALL AND REMOVE THE SOCKET**(fig. 6)**

Always use an impact socket of the correct size for bolts and nuts. An incorrect socket will result in inaccurate and inconsistent fastening torque and/or damage to the bolt or nut.

1. Lock the variable-speed trigger switch by placing the direction-of-rotation selector in the centre position.
2. To install the socket, push it onto the output drive of the tool until it locks into place.
3. To remove the socket, simply pull it off.

fig. 6**TO FASTEN**

1. Start threading the fastener by hand onto or into its threaded counterpart (e.g., nut onto bolt, or bolt into nut or threaded hole).
2. With the proper impact socket securely mounted to the impact wrench, slide the impact socket onto the nut or bolt head.
3. Place the direction-of-rotation selector in the FORWARD position, firmly hold the tool, and depress the variable-speed trigger switch. The impact socket will turn the fastener and impacting will begin when the fastener encounters resistance.

TO LOOSEN

1. With the proper impact socket securely mounted to the wrench, slide the impact socket onto the bolt head.
2. Place the direction-of-rotation selector in the REVERSE position, firmly hold the tool, and depress the variable-speed trigger switch. The tool will start to impact immediately.
3. Once the fastener has “broken loose”, it will start to unthread. Be careful that you do not allow a fastener to spin freely once it is no longer engaged with its threaded counterpart, as it may be thrown out of the socket.

NOTICE:

- Always keep the impact wrench at a right angle to the fastener to avoid damaging the fastener head.

**WARNING!**

- Do not over-tighten, as the force of the impact wrench can break the fastener.
- When loosening a fastener, be careful that you do not allow the fastener to spin freely once it is no longer engaged with its threaded counterpart, as it may be thrown out of the socket.

IMPACTING TIPS

The proper fastening torque may differ depending on the type or size of the bolt, the material of the workpiece to be fastened, etc.

Practice with various fasteners, noting the length of time required to reach the desired torque. Check the tightness with a hand-torque wrench. If the fasteners are too tight, reduce the impacting time. If they are not tight enough, increase the impacting time.

Hold the tool firmly and place the socket over the bolt or nut. Turn the tool on and fasten the bolt or nut to the proper torque.

The torque that is required to loosen a fastener averages 75% to 80% of the tightening torque, depending on the condition of the contacting surfaces. If rust or corrosion causes seizing, more torque may be required.

After fastening, always check the torque with a torque wrench. The fastening torque is affected by a wide variety of factors, including the following:

- **Voltage:** a voltage reduction due to a nearly discharged battery will cause a reduction in the fastening torque.
- **Socket:** failure to use the correct size of socket will cause a reduction in the fastening torque. A worn socket (wear on the hex end or square end) will cause a reduction in the fastening torque.
- **Bolt:** although the torque coefficient and the class of bolt may be the same, the proper fastening torque will differ according to the diameter of the bolt. Even if the diameters of bolts are the same, the proper fastening torque will differ according to the torque coefficient, the class of bolt and the bolt length.
- **Accessories:** the use of a universal joint or an extension bar (both available separately) will reduce the fastening force of the impact wrench somewhat. Compensate by fastening for a longer period of time.
- **Technique:** the manner of holding the tool or the material to be fastened will affect the torque.

NOTICE:

- Hold the tool straight and along the axis of the bolt or nut.
- Excessive fastening torque may damage the bolt/nut or socket. Before starting your job, always perform a test operation to determine the proper fastening time for your bolt or nut.

BEFORE EACH USE

1. Inspect the impact wrench, the variable-speed trigger switch and the battery pack for damage.
2. Check for damaged, missing, or worn parts.
3. Check for loose screws, misalignment or binding of moving parts, or any other condition that may affect the operation.
4. If abnormal vibration or noise occurs, turn the tool off immediately and have the problem corrected before further use. Remove the battery from the power tool before cleaning or performing any maintenance.

CLEANING

Using compressed air may be the most effective cleaning method. Always wear safety goggles when cleaning tools using compressed air.

STORAGE

Store the tool indoors in a place that is inaccessible to children. Keep away from corrosive agents.

**WARNING!**

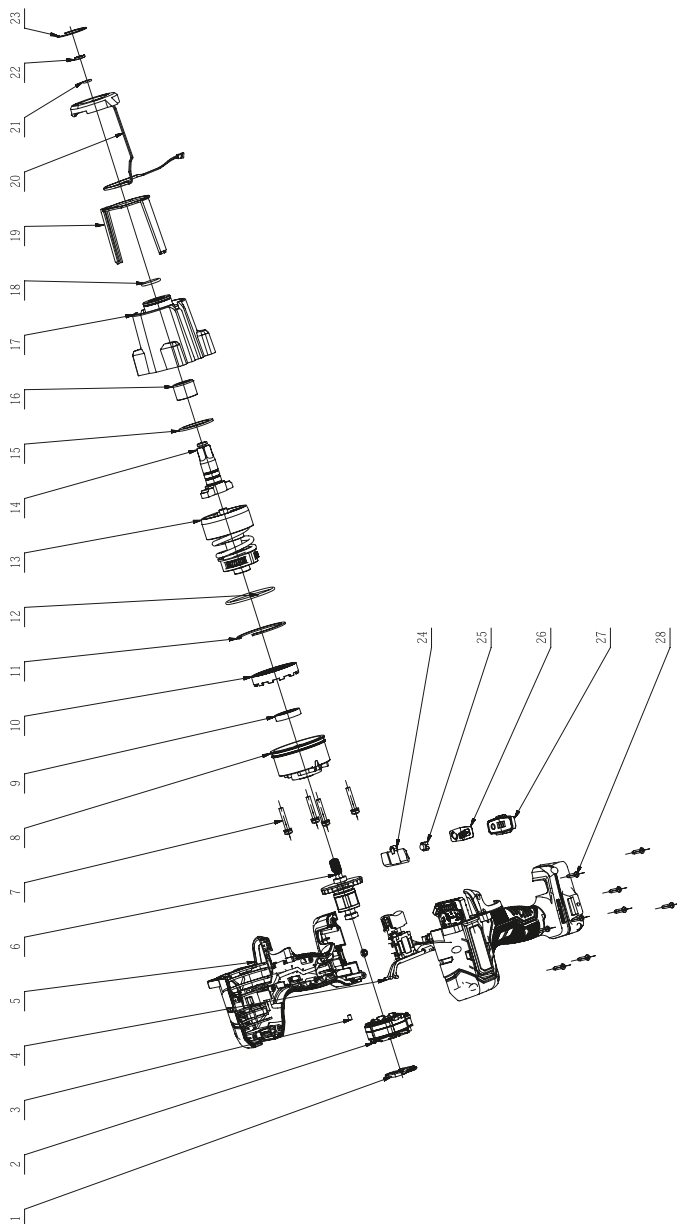
- To avoid personal injury, always remove the battery pack from the tool when cleaning or performing any maintenance.
- Do not let brake fluids, gasoline, petroleum-based products, penetrating oil, etc., come into contact with plastic parts. These substances contain chemicals that can damage, weaken, or destroy plastic.
- When servicing, use only identical replacement parts. The use of any other parts may create a hazard or cause damage to the product.
- Use only accessories that are recommended for this impact wrench by the manufacturer. Accessories that may be suitable for one tool may become hazardous when used with another tool.
- To ensure safety and reliability, all repairs should be performed by a qualified service technician.

TROUBLESHOOTING

Problem	Possible Causes	Solution
Tool will not start.	Battery pack is depleted.	Charge the battery.
	The battery is overloaded.	Cool the battery pack under air flow.
Socket cannot be installed.	Improper socket selection.	Use a suitable socket.
The motor is overheating.	Be sure cooling vents are free from dust and obstacles.	Clean and clear the vents. Do not cover with your hand during operation.
Tool's LED light shines slowly.	The tool enters the low voltage protection mode.	Charge the battery.

If the problem remains unsolved after performing the checks described above, call the toll-free helpline at 1-800-689-9928.

EXPLODED VIEW



No.	Part No.	Description
1	3134620001	Logo
2	2740639004	Stator
3	3121038001	Rubber Stick
4	2831605001	Main Electric Assembly
5	2850069001	L R Housing Set
6	2751525001	Rotor Assembly
7	5610416001	Screw and Washer Assembly
8	3423483001	Rear Gear Case
9	5700383002	Ball Bearing
10	3570145001	Annular Gear
11	5660194001	Circlip for Hole
12	5690342001	O Ring
13	2829578001	Impact Block Assembly
14	3551519002	Spindle

No.	Part No.	Description
15	5650897001	Plain Washer
16	3580474001	Output Shaft Bush
17	3423530001	Front Gear Case
18	5690208001	O Ring
19	3134712001	Baffle
20	2850055001	Lamp Holder Assembly
21	5690209001	O Ring
22	5660292001	C Ring
23	5660409001	Circlips for Shaft
24	3127638002	F/R Button
25	3133403002	Rubber Push Button
26	3709106001	Indicator Label
27	3134709001	Cover Plate
28	5610294001	Tapping Screw

If any parts are missing or damaged, or if you have any questions, please call the Toll-free Helpline, at 1-800-689-9928.

This Mastercraft® product is guaranteed for a period of **three (3) years from the date of original retail purchase** against defects in workmanship and materials, except for the following components:

- a) Component A: Batteries, chargers and carrying case, which are guaranteed for a period of two (2) years from the date of original retail purchase against defects in workmanship and materials;
- b) Component B: Accessories, which are guaranteed for a period of one (1) year from the date of original retail purchase against defects in workmanship and materials.

Subject to the conditions and limitations described below, this product, if returned to us with proof of purchase within the stated warranty period and if covered under this warranty, will be repaired or replaced (with the same model, or one of equal value or specification), at our option. We will bear the cost of any repair or replacement and any costs of labour relating thereto.

These warranties are subject to the following conditions and limitations:

- a) a bill of sale verifying the purchase and purchase date must be provided;
- b) this warranty will not apply to any product or part thereof which is worn or broken or which has become inoperative due to abuse, misuse, accidental damage, neglect or lack of proper installation, operation or maintenance (as outlined in the applicable owner's manual or operating instructions) or which is being used for industrial, professional, commercial or rental purposes;
- c) this warranty will not apply to normal wear and tear or to expendable parts or accessories that may be supplied with the product that are expected to become inoperative or unusable after a reasonable period of use;
- d) this warranty will not apply to routine maintenance and consumable items such as, but not limited to, fuel, lubricants, vacuum bags, blades, belts, sandpaper, bits, fluids, tune-ups or adjustments;
- e) this warranty will not apply where damage is caused by repairs made or attempted by others (i.e., persons not authorized by the manufacturer);
- f) this warranty will not apply to any product that was sold to the original purchaser as a reconditioned or refurbished product (unless otherwise specified in writing);
- g) this warranty will not apply to any product or part thereof if any part from another manufacturer is installed therein or any repairs or alterations have been made or attempted by unauthorized persons;
- h) this warranty will not apply to normal deterioration of the exterior finish, such as, but not limited to, scratches, dents, paint chips, or to any corrosion or discolouring by heat, abrasive and chemical cleaners;
- i) this warranty will not apply to component parts sold by and identified as the product of another company, which shall be covered under the product manufacturer's warranty, if any.

Additional Limitations

This warranty applies only to the original purchaser and may not be transferred. Neither the retailer nor the manufacturer shall be liable for any other expense, loss or damage, including, without limitation, any indirect, incidental, consequential or exemplary damages arising in connection with the sale, use or inability to use this product.

Notice to Consumer

This warranty gives you specific legal rights, and you may have other rights, which may vary from province to province. The provisions contained in this warranty are not intended to limit, modify, take away from, disclaim or exclude any statutory warranties set forth in any applicable provincial or federal

legislation.

Made in China

Imported by

Mastercraft Canada Toronto, Canada M4S 2B8

WARRANTY

