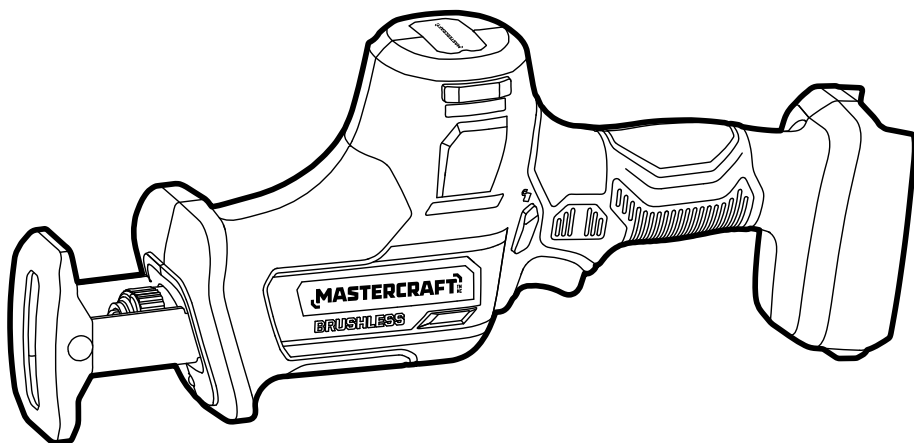


MASTERCRAFT™/MC

BRUSHLESS ONE-HANDED RECIPROCATING SAW

054-8377-8



IMPORTANT:

Read and understand this instruction manual thoroughly before using the product.

INSTRUCTION MANUAL

TABLE OF CONTENTS

Technical Specifications	4
Safety Guidelines	5
Key Parts Diagram	10
Operating Instructions	11
Maintenance	14
Troubleshooting	15
Parts List	16
Warranty	17

NOTE:

If any parts are missing or damaged, or if you have any questions, please call our toll-free helpline at 1-800-689-9928.



SAVE THESE INSTRUCTIONS

- This manual contains important safety and operating instructions. Read all instructions and follow them with use of this product.

TECHNICAL SPECIFICATIONS

Rated Voltage	20V max* d.c.
Variable Speed	0–3000 SPM
Blade Stroke	1" (25 mm)
Sawing capacity in wood	7-1/16 in (180 mm)
Sawing capacity in aluminum	1-3/16 in (30 mm)
Sawing capacity in steel	9/16 in (15 mm)

*Maximum battery voltage without workload; with workload nominal voltage is 18V.

NOTICE: Recommend using tool with Mastercraft® 20V max* lithium-ion 4.0 Ah battery (054-7557-6) and higher capacity batteries for optimal performance.

SAFETY GUIDELINES:



WARNING!

Safety symbols in this Instruction Manual are used to flag possible dangers. The safety symbols and their explanations require your full understanding. The safety warnings do not, by themselves, eliminate any danger, nor are they substitutes for proper accident prevention measures.



WARNING!

This Safety Alert Symbol indicates caution, warning, or danger. Failure to obey a safety warning can result in serious injury to yourself or others. To reduce the risk of injury, fire, or electric shock, always follow the safety precautions.

KNOW YOUR TOOL

To operate this tool, carefully read this Instruction Manual and all labels affixed to the reciprocating saw before using. Keep this instruction manual available for future reference.

IMPORTANT

This tool should only be serviced by a qualified service technician. For more information, call the toll free helpline at 1-800-689-9928.

READ ALL INSTRUCTIONS THOROUGHLY.

SAVE THESE INSTRUCTIONS.

GENERAL POWER TOOL SAFETY WARNINGS



WARNING!

Read all safety warnings, instructions, illustrations and specifications provided with this power tool. Failure to follow all instructions listed below may result in electric shock, fire and/or serious injury.

SAVE ALL WARNINGS AND INSTRUCTIONS FOR FUTURE REFERENCE.

The term “power tool” in the warnings refers to your mains-operated (corded) power tool or battery-operated (cordless) power tool.

WORK AREA SAFETY

- **Keep work area clean and well lit.** Cluttered or dark areas invite accidents.
- **Do not operate power tools in explosive atmospheres, such as in the presence of flammable liquids, gases or dust.** Power tools create sparks which may ignite the dust or fumes.
- **Keep children and bystanders away while operating a power tool.** Distractions can cause you to lose control.

ELECTRICAL SAFETY

- **Power tool plugs must match the outlet. Never modify the plug in any way. Do not use any adapter plugs with earthed (grounded) power tools.** Unmodified plugs and matching outlets will reduce risk of electric shock.
- **Avoid body contact with earthed or grounded surfaces, such as pipes, radiators, ranges and refrigerators.** There is an increased risk of electric shock if your body is earthed or grounded.
- **Do not expose power tools to rain or wet conditions.** Water entering a power tool will increase the risk of electric shock.
- **Do not abuse the cord. Never use the cord for carrying, pulling or unplugging the power tool. Keep cord away from heat, oil, sharp edges or moving parts.** Damaged or entangled cords increase the risk of electric shock.
- **When operating a power tool outdoors, use an extension cord suitable for outdoor use.** Use of a cord suitable for outdoor use reduces the risk of electric shock.
- **If operating a power tool in a damp location is unavoidable, use a ground fault circuit interrupter (GFCI) protected supply.** Use of a GFCI reduces the risk of electric shock.

PERSONAL SAFETY

- **Stay alert, watch what you are doing and use common sense when operating a power tool. Do not use a power tool while you are tired or under the influence of drugs, alcohol or medication.** A moment of inattention while operating power tools may result in serious personal injury.
- **Use personal protective equipment. Always wear eye protection.** Protective equipment such as a dust mask, non-skid safety shoes, hard hat or hearing protection used for appropriate conditions will reduce personal injuries.
- **Prevent unintentional starting. Ensure the switch is in the off-position before connecting to power source and/or battery pack, picking up or carrying the tool.** Carrying power tools with your finger on the switch or energizing power tools that have the switch on invites accidents.
- **Remove any adjusting key or wrench before turning the power tool on.** A wrench or a key left attached to a rotating part of the power tool may result in personal injury.
- **Do not overreach. Keep proper footing and balance at all times.** This enables better control of the power tool in unexpected situations.
- **Dress properly. Do not wear loose clothing or jewellery. Keep your hair and clothing away from moving parts.** Loose clothes, jewellery or long hair can be caught in moving parts.
- **If devices are provided for the connection of dust extraction and collection facilities, ensure these are connected and properly used.** Use of dust collection can reduce dust-related hazards.
- **Do not let familiarity gained from frequent use of tools allow you to become complacent and ignore tool safety principles.** A careless action can cause severe injury within a fraction of a second.

POWER TOOL USE AND CARE

- **Do not force the power tool. Use the correct power tool for your application.** The correct power tool will do the job better and safer at the rate for which it was designed.
- **Do not use the power tool if the switch does not turn it on and off.** Any power tool that cannot be controlled with the switch is dangerous and must be repaired.
- **Disconnect the plug from the power source and/or remove the battery pack, if detachable, from the power tool before making any adjustments, changing accessories, or storing power tools.** Such preventive safety measures reduce the risk of starting the power tool accidentally.
- **Store idle power tools out of the reach of children and do not allow persons unfamiliar with the power tool or these instructions to operate the power tool.** Power tools are dangerous in the hands of untrained users.
- **Maintain power tools and accessories. Check for misalignment or binding of moving parts, breakage of parts and any other condition that may affect the power tool's operation. If damaged, have the power tool repaired before use.** Many accidents are caused by poorly maintained power tools.
- **Keep cutting tools sharp and clean.** Properly maintained cutting tools with sharp cutting edges are less likely to bind and are easier to control.
- **Use the power tool, accessories and tool bits etc. in accordance with these instructions, taking into account the working conditions and the work to be performed.** Use of the power tool for operations different from those intended could result in a hazardous situation.
- **Keep handles and grasping surfaces dry, clean and free from oil and grease.** Slippery handles and grasping surfaces do not allow for safe handling and control of the tool in unexpected situations.

BATTERY TOOL USE AND CARE

- **Recharge only with the charger specified by the manufacturer.** A charger that is suitable for one type of battery pack may create a risk of fire when used with another battery pack.
- **Use power tools only with specifically designated battery packs.** Use of any other battery packs may create a risk of injury and fire.
- **When battery pack is not in use, keep it away from other metal objects, like paper clips, coins, keys, nails, screws or other small metal objects, that can make a connection from one terminal to another.** Shorting the battery terminals together may cause burns or a fire.
- **Under abusive conditions, liquid may be ejected from the battery; avoid contact. If contact accidentally occurs, flush with water. If liquid contacts eyes, additionally seek medical help.** Liquid ejected from the battery may cause irritation or burns.
- **Do not use a battery pack or tool that is damaged or modified.** Damaged or modified batteries may exhibit unpredictable behaviour resulting in fire, explosion or risk of injury.

- **Do not expose a battery pack or tool to fire or excessive temperature.** Exposure to fire or temperature above 130°C (265°F) may cause explosion.
- **Follow all charging instructions and do not charge the battery pack or tool outside the temperature range specified in the instructions.** Charging improperly or at temperatures outside the specified range may damage the battery and increase the risk of fire.

SERVICE

- **Have your power tool serviced by a qualified repair person using only identical replacement parts.** This will ensure that the safety of the power tool is maintained.
- **Never service damaged battery packs.** Service of battery packs should only be performed by the manufacturer or authorized service providers.

SAFETY INSTRUCTIONS FOR RECIPROCATING SAWS

1. **Hold the power tool by insulated gripping surfaces, when performing an operation where the cutting accessory may contact hidden wiring.** Cutting accessory contacting a “live” wire may make exposed metal parts of the power tool “live” and could give the operator an electric shock.
2. **Use clamps or another practical way to secure and support the workpiece to a stable platform.** Holding the workpiece by hand or against your body leaves it unstable and may lead to loss of control.

ADDITIONAL SAFETY GUIDELINES FOR THE SAW

- **The label on your tool may include the following symbols. The symbols and their definitions are as follows:**

V Volts

A Amperes

Hz Hertz

W Watts

lbs Pounds

 or d.c Direct current

n_0 No-load speed

SPM Strokes per minute



..... WARNING – To reduce the risk of injury, user must read instruction manual.



..... WARNING – To reduce the risk of injury, always wear ear protection.



WARNING!

To reduce the risk of electric shock or damage to the charger and battery, use only the Mastercraft® batteries and chargers listed.

BATTERY PACK

054-3124-0, 054-7553-4,
054-7557-6, 054-2434-8

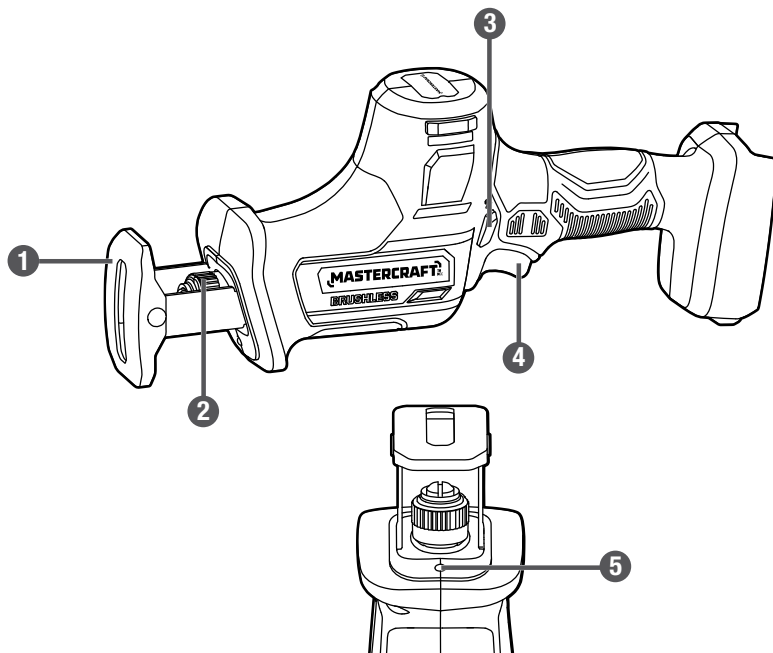
CHARGER

054-3126-6, 054-7559-2, 054-8299-4

- **For best results, your battery and tool should be charged, stored and used in a location where the temperature is more than 5°C (41°F) but less than 40°C (104°F).** Do not store outside or in vehicles.

PACKAGE CONTENTS:

Brushless reciprocating saw, blade and instruction manual.

KEY PARTS DIAGRAM

No.	Description
1	Pivot shoe
2	Tool-less blade clamp
3	Lock-off button

No.	Description
4	Variable-speed trigger switch
5	LED worklight

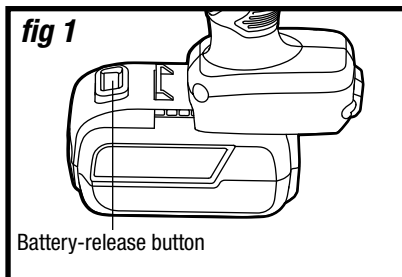
**WARNING!**

- Remove the reciprocating saw from the package and examine it carefully. Do not discard the carton or any packaging material until all parts have been examined.
- If any part of the reciprocating saw is missing or damaged, do not attach the tool to a power source or use the tool until the part has been repaired or replaced. Failure to heed this warning could result in serious injury.
- Do not allow familiarity with the reciprocating saw to cause a lack of alertness. A fraction of a second of carelessness is enough to cause severe injury.

OPERATING INSTRUCTIONS

TO ATTACH THE BATTERY PACK (fig 1)

1. Align the raised rib on the battery pack with the grooves on the bottom of the tool, then slide the battery pack onto the tool.
2. Ensure that the battery-release button on the battery pack snaps into place and the battery pack is secured to the tool before beginning operation.

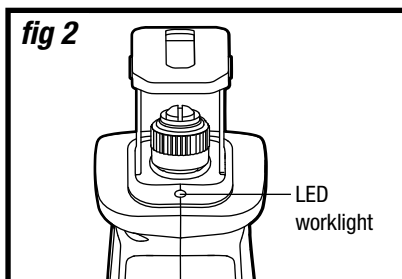


TO DETACH THE BATTERY PACK (fig 1)

1. Press the battery-release button to release the battery pack.
2. Pull the battery pack to remove it from the tool.

LED WORKLIGHT (fig 2)

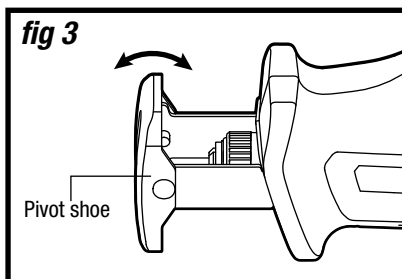
The LED worklight, located on the front of the tool, will illuminate when the trigger switch is depressed before the tool is running. This provides additional light on the surface of the workpiece. The light will automatically turn off within 10 seconds after releasing the trigger.



PIVOT SHOE (fig 3)

The shoe pivots to provide maximum contact with the surface being cut.

1. Remove the battery pack from the saw.
2. Hold the saw securely, and then pivot the base shoe to the desired angle.

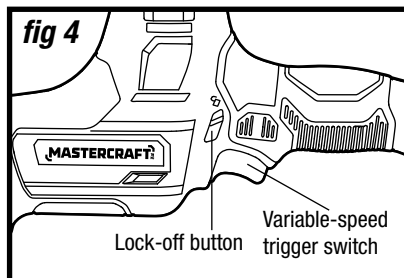


NOTICE: When placing the battery pack on the tool, be sure that the raised rib on the battery pack aligns with the groove on the tool and the latches snap into place properly. Improper assembly of the battery pack can cause damage to internal components.

VARIABLE-SPEED TRIGGER SWITCH (fig 4)

Your reciprocating saw is equipped with a variable-speed trigger switch to turn the saw on and off and to control the speed.

1. To start the saw, press the lock-off button to the direction of "⏏" (right side of the tool) and then squeeze the trigger switch.
2. To stop the saw, release the trigger switch and press the lock-off button to the direction of "⏏" (left side of the tool) to lock the trigger switch in the "OFF" position.

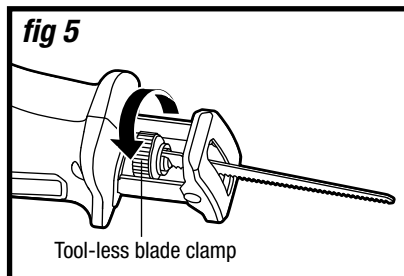


VARIABLE-SPEED (fig 4)

The variable-speed trigger switch delivers higher speed with increased trigger pressure and lower speed with decreased trigger pressure.

INSTALLING THE BLADE (fig 5)

1. Remove the battery pack from the tool.
2. Turn the tool-less blade clamp counter-clockwise.
3. Insert the blade into the slot in the blade clamp.
4. Release the blade clamp to lock the blade in place.



REMOVING THE BLADE (fig 5)

1. Remove the battery pack from the tool.
2. Turn the tool-less blade clamp counter-clockwise.
3. Pull the blade out of the blade clamp.

NOTICE:

- The blade may be installed with the teeth pointing up or down, according to the needs of the cutting operation.
- When changing a blade immediately after operation, allow the blade to cool before removing to avoid possible burning from the hot blade.



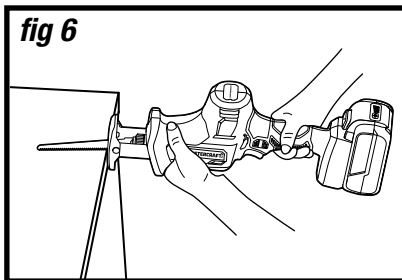
WARNING!

- When changing the blade, always wear protective gloves. The sharp edges of the blade will cause personal injury.

GENERAL CUTTING (fig 6)

1. Remove the battery pack from the saw.
2. Make sure that the workpiece is firmly clamped in place.
3. Install the appropriate type and size of blade for the workpiece material and size.
4. Adjust the base shoe as necessary.
5. Check for clearance behind the workpiece so that the blade will not impact another surface.
6. Mark the line of cut clearly. If cutting metal, apply cutting oil to the line.
7. Attach the battery pack to the saw.
8. Hold the saw firmly with both hands. Make sure to keep your hands on the insulated gripping areas only.
9. Press the lock-off button to the right side of the tool and then squeeze the trigger switch to start saw; allow it to reach the maximum desired cutting speed before applying the blade to the workpiece.
10. Place the flat surface of the shoe firmly on the workpiece while cutting. Use only enough steady pressure on the blade to keep the saw cutting; do not force the tool.
11. Reduce pressure as the blade comes to the end of the cut.
12. Allow the saw to come to a complete stop before removing the blade from the workpiece.
13. If sawing fibreglass, plaster, wallboard, or spackling compound, clean the motor vents frequently with a vacuum or compressed air. These materials are highly abrasive and may accelerate the wear on motor bearings and brushes.

fig 6



METAL CUTTING

The saw can be used to cut metals, such as sheet steel, pipe, steel rods, aluminum, brass, and copper. Be careful not to twist or bend the saw blade. Do not force the tool.

The use of cutting oil is recommended when cutting soft metals and steel. Cutting oil will keep the blade cool, increase cutting action, and prolong blade life.

1. Securely clamp the workpiece in position and make the cut close to the clamping point to minimize vibration.
2. When cutting conduit pipe or angle iron, clamp the work in a vise, if possible, and cut close to the vise.
3. To cut thin sheet material, "sandwich" the material between pieces of hardboard or plywood and clamp the layers together to reduce vibration and tearing of the material.

NOTICE: Cutting speeds should vary with the workpiece. Hard materials, such as metals, require lower speeds; use higher speeds for softer materials.



WARNING!

- Before attaching the battery pack to the tool, always check to determine that the switch performs properly and returns to the "OFF" position when released.
- Hold the tool only by the plastic handle and the insulated grip area to help prevent electric shock. You may encounter electrical wiring when sawing into walls or floors. Sawing into a "live" wire will cause electric shock.

MAINTENANCE

1. Inspect the reciprocating saw, the trigger switch and the accessories for damage.
2. Check for damaged, missing, or worn parts.
3. Check for loose screws, misalignment or binding of moving parts, or any other condition that may affect the operation.
4. If abnormal vibration or noise occurs, turn the tool off immediately and have the problem corrected before further use.
5. Detach the battery from the saw before cleaning or performing any maintenance. Using compressed air may be the most effective cleaning method. Always wear safety goggles when cleaning tools using compressed air.

**WARNING!**

- Do not let brake fluids, gasoline, petroleum-based products, penetrating oil, etc., come into contact with plastic parts. These substances contain chemicals that can damage, weaken, or destroy plastic.
- When servicing, use only identical replacement parts. The use of any other parts may create a hazard or cause damage to the product.
- Use only accessories that are recommended for this saw by the manufacturer. Accessories that may be suitable for one tool may become hazardous when used with another tool.
- To ensure safety and reliability, all repairs should be performed by a qualified service technician.

TROUBLESHOOTING

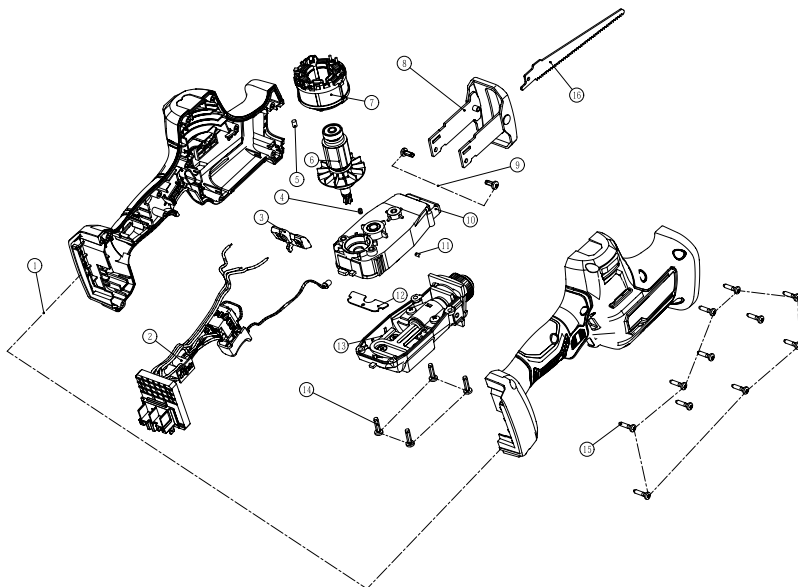
Problem	Possible Causes	Solution
The tool does not work.	The battery is depleted.	Charge the battery.
	The tool or the battery is overloaded.	Decrease the load on the tool and restart the tool.
	The tool or the battery is overheated.	Cool the tool and battery and restart the tool.

Cutting is difficult.

Saw blade is worn out.

Replace the saw blade.

If the problem remains unsolved after performing the checks described above, call the toll-free helpline at 1-800-689-9928.

EXPLODED VIEW

No.	Part No.	Description
1	3900394000	L/R Housing Set
2	2830880000	Main Electric Assembly
3	3129412000	Lock Button
4	3125625000	Rubber Pole
5	3121038000	Rubber Stick
6	2751140000	Rotor
7	2740473000	Stator
8	2826815000	Pivot Shoe

No.	Part No.	Description
9	5610097000	Thread Forming Screw
10	2825642000	Gear Case Assembly
11	3550290000	Lock Pin
12	3707583000	Support Plate
13	2825643000	Gear Case Cover Assembly
14	5610094000	Thread Forming Screw
15	5610264000	Hexagon Lobular Screw
16	3810008000	Reciprocating Saw Blade

If any parts are missing or damaged, or if you have any questions, please call the toll-free helpline at 1-800-689-9928.

This Mastercraft product is guaranteed for a period of **3 years from the date of original retail purchase** against defects in workmanship and materials, except for the following components:

- a) Component A: Batteries, chargers and carrying case, which are guaranteed for a period of 2 years from the date of original retail purchase against defects in workmanship and materials;
- b) Component B: Accessories, which are guaranteed for a period of 1 year from the date of original retail purchase against defects in workmanship and materials.

Subject to the conditions and limitations described below, this product, if returned to us with proof of purchase within the stated warranty period and if covered under this warranty, will be repaired or replaced (with the same model, or one of equal value or specification), at our option. We will bear the cost of any repair or replacement and any costs of labour relating thereto.

These warranties are subject to the following conditions and limitations:

- a) a bill of sale verifying the purchase and purchase date must be provided;
- b) this warranty will not apply to any product or part thereof which is worn or broken or which has become inoperative due to abuse, misuse, accidental damage, neglect or lack of proper installation, operation or maintenance (as outlined in the applicable owner's manual or operating instructions) or which is being used for industrial, professional, commercial or rental purposes;
- c) this warranty will not apply to normal wear and tear or to expendable parts or accessories that may be supplied with the product that are expected to become inoperative or unusable after a reasonable period of use;
- d) this warranty will not apply to routine maintenance and consumable items such as, but not limited to, fuel, lubricants, vacuum bags, blades, belts, sandpaper, bits, fluids, tune-ups or adjustments;
- e) this warranty will not apply where damage is caused by repairs made or attempted by others (i.e., persons not authorized by the manufacturer);
- f) this warranty will not apply to any product that was sold to the original purchaser as a reconditioned or refurbished product (unless otherwise specified in writing);
- g) this warranty will not apply to any product or part thereof if any part from another manufacturer is installed therein or any repairs or alterations have been made or attempted by unauthorized persons;
- h) this warranty will not apply to normal deterioration of the exterior finish, such as, but not limited to, scratches, dents, paint chips, or to any corrosion or discolouring by heat, abrasive and chemical cleaners; and
- i) this warranty will not apply to component parts sold by and identified as the product of another company, which shall be covered under the product manufacturer's warranty, if any.

Additional Limitations

This warranty applies only to the original purchaser and may not be transferred. Neither the retailer nor the manufacturer shall be liable for any other expense, loss or damage, including, without limitation, any indirect, incidental, consequential or exemplary damages arising in connection with the sale, use or inability to use this product.

Notice to Consumer

This warranty gives you specific legal rights, and you may have other rights, which may vary from province to province. The provisions contained in this warranty are not intended to limit, modify, take away from, disclaim or exclude any statutory warranties set forth in any applicable provincial or federal legislation.

Made in China

Imported by

Mastercraft Canada Toronto, Canada M4S 2B8

