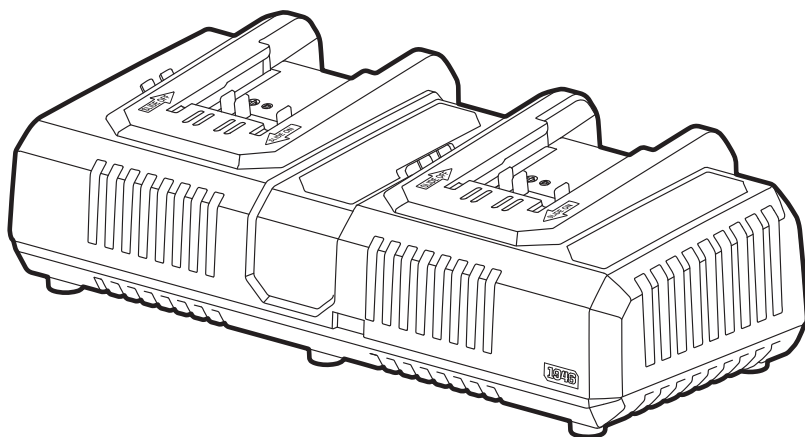


MASTERCRAFT™/MC

DUAL PORT CHARGER

054-8299-4



IMPORTANT:

Read and understand this instruction manual thoroughly before using the product.

INSTRUCTION MANUAL

TABLE OF CONTENTS

Technical Specifications	4
Safety Guidelines	5
Key Parts Diagram	11
Operating Instructions	12
Maintenance	14
Troubleshooting	15
Parts List	16
Warranty	17

NOTE:

If any parts are missing or damaged, or if you have any questions, please call our toll-free helpline at 1-800-689-9928.



SAVE THESE INSTRUCTIONS

- This manual contains important safety and operating instructions. Read all instructions and follow them with use of this product.

TECHNICAL SPECIFICATIONS

Charger Input	120V ~ 60 Hz, 2x60W
USB Output	5V $\overline{\text{---}}$, 2.1A
Charging Times for Batteries	054-3124-0 (1.5 Ah): 50 min 054-7553-4 (2.0 Ah): 60 min 054-7557-6 (4.0 Ah): 120 min 054-2434-8 (5.0 Ah): 150 min
Optimum Charging Temperature Range	5–40°C (41–104°F)

SAFETY GUIDELINES:



WARNING!

Safety symbols in this Instruction Manual are used to flag possible dangers. The safety symbols and their explanations require your full understanding. The safety warnings do not, by themselves, eliminate any danger, nor are they substitutes for proper accident prevention measures.



WARNING!

This Safety Alert Symbol indicates caution, warning, or danger. Failure to obey a safety warning can result in serious injury to yourself or others. To reduce the risk of injury, fire, or electric shock, always follow the safety precautions.

KNOW YOUR TOOL

To operate this tool, carefully read this Instruction Manual and all labels affixed to the charger before using. Keep this instruction manual available for future reference.

IMPORTANT

This tool should only be serviced by a qualified service technician. For more information, call the toll free helpline at 1-800-689-9928.

READ ALL INSTRUCTIONS THOROUGHLY.

SAVE THESE INSTRUCTIONS.

GENERAL POWER TOOL SAFETY WARNINGS



WARNING!

Read all safety warnings, instructions, illustrations and specifications provided with this power tool. Failure to follow all instructions listed below may result in electric shock, fire and/or serious injury.

SAVE ALL WARNINGS AND INSTRUCTIONS FOR FUTURE REFERENCE.

The term “power tool” in the warnings refers to your mains-operated (corded) power tool or battery-operated (cordless) power tool.

WORK AREA SAFETY

- **Keep the work area clean and well lit.** Cluttered or dark areas invite accidents.
- **Do not operate power tools in explosive atmospheres, such as in the presence of flammable liquids, gases or dust.** Power tools create sparks which may ignite the dust or fumes.
- **Keep children and bystanders away while operating a power tool.** Distractions can cause you to lose control.

ELECTRICAL SAFETY

- **Power tool plugs must match the outlet. Never modify the plug in any way.** Do not use any adapter plugs with earthed (grounded) power tools. Unmodified plugs and matching outlets will reduce risk of electric shock.
- **Avoid body contact with earthed or grounded surfaces, such as pipes, radiators, ranges and refrigerators.** There is an increased risk of electric shock if your body is earthed or grounded.
- **Do not expose power tools to rain or wet conditions.** Water entering a power tool will increase the risk of electric shock.
- **Do not abuse the cord.** Never use the cord for carrying, pulling or unplugging the power tool. Keep cord away from heat, oil, sharp edges or moving parts. Damaged or entangled cords increase the risk of electric shock.
- **When operating a power tool outdoors, use an extension cord suitable for outdoor use.** Use of a cord suitable for outdoor use reduces the risk of electric shock.
- **If operating a power tool in a damp location is unavoidable, use a ground fault circuit interrupter (GFCI) protected supply.** Use of a GFCI reduces the risk of electric shock.

PERSONAL SAFETY

- **Stay alert, watch what you are doing and use common sense when operating a power tool.** Do not use a power tool while you are tired or under the influence of drugs, alcohol or medication. A moment of inattention while operating power tools may result in serious personal injury.
- **Use personal protective equipment.** Always wear eye protection. Protective equipment such as a dust mask, non-skid safety shoes, hard hat or hearing protection used for appropriate conditions will reduce personal injuries.
- **Prevent unintentional starting.** Ensure the switch is in the off-position before connecting to power source and/or battery pack, picking up or carrying the tool. Carrying power tools with your finger on the switch or energising power tools that have the switch on invites accidents.
- **Remove any adjusting key or wrench before turning the power tool on.** A wrench or a key left attached to a rotating part of the power tool may result in personal injury.
- **Do not overreach.** Keep proper footing and balance at all times. This enables better control of the power tool in unexpected situations.
- **Dress properly. Do not wear loose clothing or jewellery.** Keep your hair and clothing away from moving parts. Loose clothes, jewellery or long hair can be caught in moving parts.
- **If devices are provided for the connection of dust extraction and collection facilities, ensure these are connected and properly used.** Use of dust collection can reduce dust-related hazards.

POWER TOOL USE AND CARE

- **Do not force the power tool. Use the correct power tool for your application.** The correct power tool will do the job better and safer at the rate for which it was designed.

- **Do not use the power tool if the switch does not turn it on and off.** Any power tool that cannot be controlled with the switch is dangerous and must be repaired.
- **Disconnect the plug from the power source and/or remove the battery pack, if detachable, from the power tool before making any adjustments, changing accessories, or storing power tools.** Such preventive safety measures reduce the risk of starting the power tool accidentally.
- **Store idle power tools out of the reach of children and do not allow persons unfamiliar with the power tool or these instructions to operate the power tool.** Power tools are dangerous in the hands of untrained users.
- **Maintain power tools and accessories.** Check for misalignment or binding of moving parts, breakage of parts and any other condition that may affect the power tool's operation. If damaged, have the power tool repaired before use. Many accidents are caused by poorly maintained power tools.
- **Keep cutting tools sharp and clean. Properly maintained cutting tools with sharp cutting edges are less likely to bind and are easier to control.**
- **Use the power tool, accessories and tool bits etc. in accordance with these instructions, taking into account the working conditions and the work to be performed.** Use of the power tool for operations different from those intended could result in a hazardous situation.

BATTERY TOOL USE AND CARE

- **Recharge only with the charger specified by the manufacturer.** A charger that is suitable for one type of battery pack may create a risk of fire when used with another battery pack.
- **Use power tools only with specifically designated battery packs.** Use of any other battery packs may create a risk of injury and fire.
- **When battery pack is not in use, keep it away from other metal objects, like paper clips, coins, keys, nails, screws or other small metal objects, that can make a connection from one terminal to another.** Shorting the battery terminals together may cause burns or a fire.
- **Under abusive conditions, liquid may be ejected from the battery; avoid contact.** If contact accidentally occurs, flush with water. If liquid contacts eyes, additionally seek medical help. Liquid ejected from the battery may cause irritation or burns.

SERVICE

- **Have your power tool serviced by a qualified repair person using only identical replacement parts.** This will ensure that the safety of the power tool is maintained.

IMPORTANT SAFETY INSTRUCTIONS



WARNING!

Read and understand all instructions. Failure to follow all instructions listed below may result in electric shock, fire, and/or serious personal injury.

**CAUTION!**

To reduce the risk of electric shock or damage to the charger and the battery, charge only recommend rechargeable batteries as specifically designated on your charger. Other types of batteries may burst, causing personal injury or damage.

- **For indoor use only..**
- **Dry location use only.**
- **Risk of fire and electric shock.**
- **Risk of injury.**
- SAVE THESE INSTRUCTIONS -This manual contains important safety and operating instructions for battery charger Model 054-8299-4.
- Before using battery charger, read all instructions and cautionary markings on battery charger, battery, and product using battery.
- CAUTION-To reduce risk of injury, **charge only Mastercraft® 054-7553-4, 054-7557-6, 054-3124-0, 054-2434-8 20V Rechargeable Battery Packs.** Other types of battery packs may burst, causing injury to persons and damage.
- To reduce risk of battery explosion, follow these instructions and those marked on the battery.
- Never charge a frozen battery.
- Do not operate charger in a closed-in area or restrict ventilation in any way.
- **Do not use the charger outdoors or expose it to wet or damp conditions.** Water entering the charger will increase the risk of electric shock.
- **Use of an attachment not recommended or sold by the battery-charger manufacturer may result in a risk of fire, electric shock or injury to persons.**
- **Do not abuse the cord or charger.** Never use the cord to carry the charger. Do not pull the charger cord to disconnect the plug from a receptacle. Damage to the cord or charger could occur and create an electric shock hazard. Replace damaged cords immediately.
- **Make sure that the cord is located so that it will not be stepped on or tripped over, come in contact with sharp edges or moving parts, or otherwise be subjected to damage or stress.** This will reduce the risk of accidental falls, which could cause injury and damage to the cord, which could then result in electric shock.
- **Keep the cord and charger away from heat to prevent damage to the housing or internal parts.**
- **Do not allow gasoline, oils, petroleum-based products, etc., to come in contact with plastic parts.** These materials contain chemicals that can damage, weaken, or destroy plastic.
- **Do not operate the charger with a damaged cord or plug, which could cause shorting and electric shock.** If damaged, have the charger repaired or replaced by a qualified service technician.

- **Do not operate the charger if it has received a sharp blow, been dropped, or has otherwise been damaged in any way.** Take it to a qualified service technician for an electrical check to determine if the charger is in good working order.
- **Do not disassemble the charger.** Take it to a qualified service technician when service or repair is required. Incorrect reassembly may result in a risk of electric shock or fire.
- **Unplug the charger from the electrical outlet before attempting any maintenance or cleaning to reduce the risk of electric shock.**
- **Disconnect the charger from the power supply when it is not in use.** This will reduce the risk of electric shock or damage to the charger if metal items should fall into the opening. It will also help prevent damage to the charger during a power surge.
- **Risk of electric shock. Do not touch the uninsulated portion of the output connector or uninsulated battery terminal.**
- **Save these instructions.** Refer to them frequently and use them to instruct others who may use this tool. If you lend this tool to someone else, also lend these instructions to them to prevent misuse of the product and possible injury.

ADDITIONAL SAFETY GUIDELINES FOR THE CHARGER

- **The label on your tool may include the following symbols. The symbols and their definitions are as follows:**

V Volts

A Amperes

Hz Hertz

W Watts

min Minutes

 or d.c. Direct current

n_0 No-load speed

.../min or ...min⁻¹Revolutions or reciprocations per minute



..... WARNING—To reduce the risk of injury, user must read instruction manual.



..... WARNING—To reduce the risk of injury, always wear eye protection.



..... WARNING—To reduce the risk of injury, always wear ear protection.

**WARNING!**

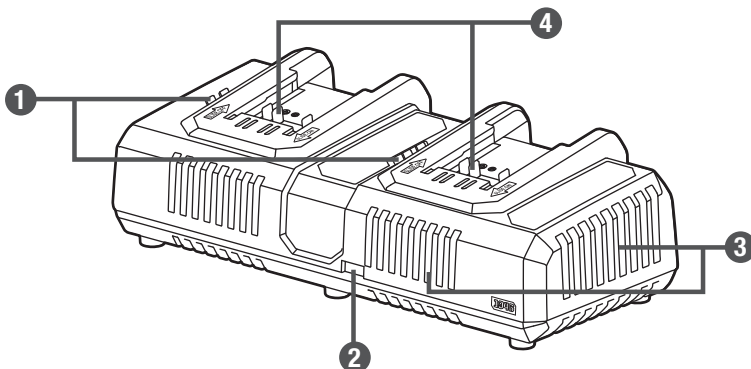
For best results, your battery and tool should be charged, stored and used in a location where the temperature is more than 5°C (41°F) but less than 40°C (104°F).

Do not store outside or in vehicles.

PACKAGE CONTENTS:

Battery Charger, Instruction Manual

KEY PARTS DIAGRAM



No.	Description
1	LED Lights
2	USB Port

No.	Description
3	Air Vents
4	Electric Contacts



WARNING!

- Remove the charger from the package and examine it carefully. Do not discard the carton or any packaging material until all parts have been examined.
- If any part of the charger is missing or damaged, do not attach the tool to a power source or use the tool until the part has been repaired or replaced. Failure to heed this warning could result in serious injury.
- Do not allow familiarity with the charger to cause a lack of alertness. A fraction of a second of carelessness is enough to cause severe injury.

OPERATING INSTRUCTIONS

WHEN TO CHARGE THE BATTERY PACK

The lithium-ion battery pack can be charged at any time and will not develop a “memory” when charged after only a partial discharge. It is not necessary to run down the battery pack charge before recharging. This charger can charge a single battery pack or two battery packs at the same time.

Remove the battery pack from the tool and recharge it when it is convenient for you and your job.

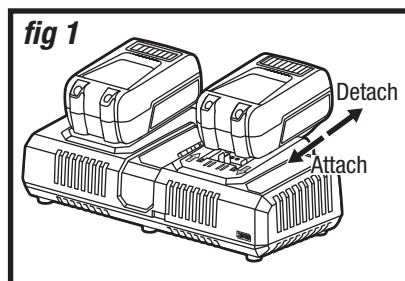
- You can “top-off” your battery pack’s charge before starting a big job or a long period of use.
- Due to lithium-ion’s fade-free properties, the only time it is necessary to charge the lithium-ion battery pack is when the pack has reached the end of its charge. To signal the end of charge, power to the tool will drop quickly. Charge the battery pack as needed.

HOW TO CHARGE THE BATTERY PACK

(fig 1)

A fully discharged battery pack will charge in about 50-150 minutes, depending on the battery, at a temperature of 5–40°C (41–104°F).

1. Charge the battery pack with the correct charger.
2. Connect the charger to a power supply. All indicators on the charger will flash once, indicating that the charger self-inspection is completed.
3. Attach the battery pack to the charger by aligning the raised ribs of the battery pack with the slot in the charger. Slide the battery pack onto the charger (fig 1).
4. The charger will communicate with the battery pack circuitry to evaluate the condition of the battery pack.
5. The green LED light will flash continuously during normal charging.
6. After charging is complete, the green LED on the charger will remain on.
7. The battery pack will fully charge, but will not overcharge, if left on the charger.



LED FUNCTIONS OF CHARGER (fig 2)

LED Indicator	Battery Pack	Red LED	Green LED	Action
● Temperature	Hot/Cold battery	On	Off	Fast charge will begin when battery returns to 5-40°C (41-104°F)
◐ Defective	Defective	Flashing	Off	Battery pack or charger is defective
◑ Charging	Charging	Off	Flashing	Charging
● Charged	Fully charged	Off	On	Charging is complete

CHARGING A HOT BATTERY PACK

If the battery pack is above the normal temperature range, the red LED will illuminate and the green LED will be off. When the battery pack cools down to approximately 104°F (40°C), the charger will automatically begin charging.

CHARGING A COLD BATTERY PACK

If the battery pack is below the normal temperature range, the red LED will illuminate and the green LED will be off. When the battery warms to a temperature of more than 41°F (5°C), the charger will automatically begin charging.

DEFECTIVE BATTERY

If the charger detects a problem, the red LED will begin flashing and the green LED will be off.

1. If registering as defective, remove and reinsert the battery pack in the charger. If the LED status reads “defective” a second time, try to charge a different battery pack.
2. If a different battery pack charges normally, dispose of the defective battery pack (see Maintenance section).
3. If a different battery pack also indicates “defective,” the charger may be defective.

BATTERY CHARGING

If the battery pack is within the normal temperature range, the green LED will begin flashing and the red LED will be off.

BATTERY FULL

After the battery is fully charged, the green LED light on the charger will be on and the red LED light will be off.

THE USB PORT

1. Plug the charger into the power supply.
2. Plug a USB cable (not included) into the USB port and plug the other end of the cable into your device. This USB port can charge mobile phones, headphones, portable power supplies, etc.
3. When not using or after charging, remove the USB cable and remove the charger from the power supply.

NOTICE:

- The battery pack will fully charge, but will not overcharge, if left on the charger.
- Charger may warm with several continuous charge cycles. This is part of the normal operation of the charge. Always charge in a well-ventilated area.

MAINTENANCE**WARNING!**

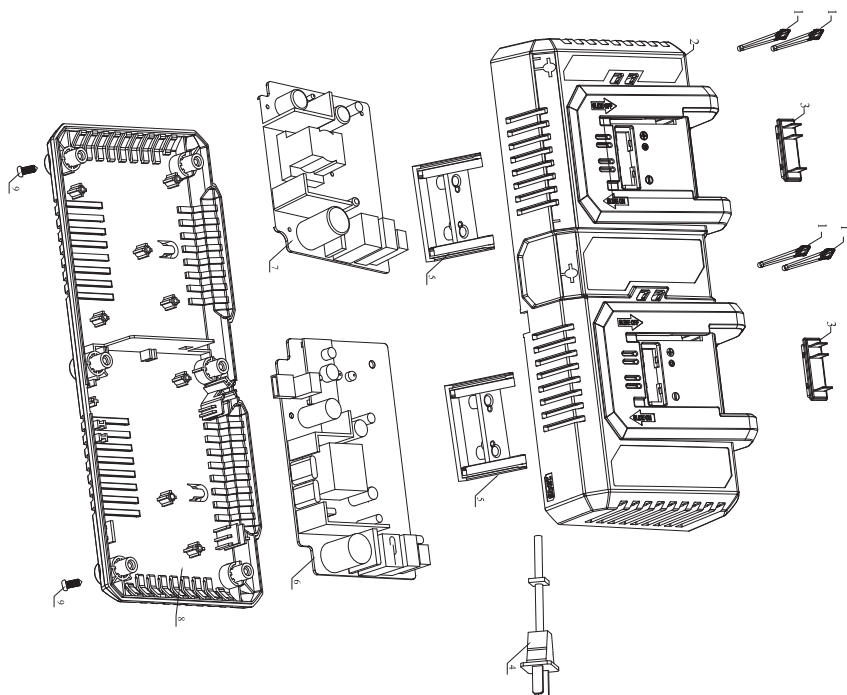
- To ensure safety and reliability, all repairs should be performed by a qualified service technician.
- When servicing, use only identical replacement parts. The use of any other parts may create a hazard or cause damage to the product.
- To avoid serious personal injury, always remove the battery pack from the tool when cleaning it or performing any maintenance.
- Always wear safety goggles or safety glasses with side shields when using compressed air to clean the tool. If the operation is dusty, also wear a dust mask.

TROUBLESHOOTING

Problem	Possible causes	Solutions
The battery pack isn't charging.	The battery pack is not connected to the charger.	Attach the battery pack to the charger again.
	The temperature is too cold or too hot.	Keep charger and battery pack at optimum charging temperature range(5-40°C) and charge again.

If the problem remains unsolved after performing the checks described above, call the toll-free helpline at 1-800-689-9928.

EXPLODED VIEW



PARTS LIST

No.	Part No.	Description
1	0548299401	Light Guide Poles
2	0548299402	Top Enclosure
3	0548299403	Output Contact Assembly
4	0548299404	Power Supply Cord
5	0548299405	Output Inner Cover

No.	Part No.	Description
6	0548299406	Pcb 1
7	0548299407	Pcb 2
8	0548299408	Bottom Enclosure
9	0548299409	Screw

If any parts are missing or damaged, or if you have any questions, please call the toll-free helpline at 1-800-689-9928.

This Mastercraft product is guaranteed **two (2) years from the date of original retail purchase** against defects in materials and workmanship, except for the following components

- a) Component A: Batteries, chargers and carrying case, which are guaranteed for a period of 2 years from the date of original retail purchase against defects in workmanship and materials;
- b) Component B: Accessories, which are guaranteed for a period of 1-year from the date of original retail purchase against defects in workmanship and materials.

Subject to the conditions and limitations described below, this product, if returned to us with proof of purchase within the stated warranty period, and if covered under this warranty, will be repaired or replaced (with the same model, or one of equal value or specification) at our option. We will bear the cost of any repair or replacement and any costs of labour relating thereto.

These warranties are subject to the following conditions and limitations:

- a) A bill of sale verifying the purchase and purchase date must be provided;
- b) This warranty will not apply to any product or part thereof that is worn or broken or that has become inoperative due to abuse, misuse, accidental damage, neglect or lack of proper installation, operation or maintenance (as outlined in the applicable Instruction Manual or operating instructions) or that is being used for industrial, professional, commercial or rental purposes;
- c) This warranty will not apply to normal wear and tear or to expendable parts or accessories that may be supplied with the product that are expected to become inoperative or unusable after a reasonable period of use;
- d) This warranty will not apply to routine maintenance and consumable items, including but not limited to fuel, lubricants, vacuum bags, blades, belts, sandpaper, bits, fluids, tune-ups or adjustments;
- e) This warranty will not apply where damage is caused by repairs made or attempted by others (i.e., persons not authorized by the manufacturer);
- f) This warranty will not apply to any product that was sold to the original purchaser as a reconditioned or refurbished product (unless otherwise specified in writing);
- g) This warranty will not apply to any product or part thereof if any part from another manufacturer is installed therein or any repairs or alterations have been made or attempted by unauthorized persons;
- h) This warranty will not apply to normal deterioration of the exterior finish, including but not limited to scratches, dents, paint chips, or to any corrosion or discolouring by heat, abrasive and chemical cleaners; and
- i) This warranty will not apply to component parts sold by and identified as the product of another company, which shall be covered under the product manufacturer's warranty.

Additional limitations

This warranty applies only to the original purchaser and may not be transferred. Neither the retailer nor the manufacturer shall be liable for any other expense, loss or damage, including, without limitation, any indirect, incidental, consequential or exemplary damages arising in connection with the sale, use or inability to use this product.

Notice to Consumer

This warranty gives you specific legal rights, and you may have other rights, which may vary from province to province. The provisions contained in this warranty are not intended to limit, modify, take away from, disclaim or exclude any statutory warranties set forth in any applicable provincial or federal legislation.

Made in China

Imported by

Mastercraft Canada Toronto, Canada M4S 2B8

