

MASTERCRAFT™/MC

HEAT GUN

054-8298-6



IMPORTANT:

Read and understand this instruction manual thoroughly before using the product.

INSTRUCTION MANUAL

TABLE OF CONTENTS

Technical Specifications	4
Safety Guidelines	5
Key Parts Diagram	11
Operating Instructions	12
Maintenance	15
Troubleshooting	16
Parts List	17
Warranty	19

NOTE:

If any parts are missing or damaged, or if you have any questions, please call our toll-free helpline at 1-800-689-9928.



SAVE THESE INSTRUCTIONS

- This manual contains important safety and operating instructions. Read all instructions and follow them with use of this product.

TECHNICAL SPECIFICATIONS

Rated voltage	20V max* d.c.
Maximum Temperature	932°F (500°C)

*Maximum battery voltage without workload; with workload nominal voltage is 18V.

NOTICE: Recommend using tool with Mastercraft® 20V max* Lithium-Ion 4.0 Ah battery (054-7557-6) and higher capacity batteries for optimal performance.

SAFETY GUIDELINES:



WARNING!

Safety symbols in this Instruction Manual are used to flag possible dangers. The safety symbols and their explanations require your full understanding. The safety warnings do not, by themselves, eliminate any danger, nor are they substitutes for proper accident prevention measures.



WARNING!

This Safety Alert Symbol indicates caution, warning, or danger. Failure to obey a safety warning can result in serious injury to yourself or others. To reduce the risk of injury, fire, or electric shock, always follow the safety precautions.

KNOW YOUR TOOL

To operate this tool, carefully read this Instruction Manual and all labels affixed to the heat gun before using. Keep this instruction manual available for future reference.

IMPORTANT

This tool should only be serviced by a qualified service technician. For more information, call the toll free helpline at 1-800-689-9928.

READ ALL INSTRUCTIONS THOROUGHLY.

SAVE THESE INSTRUCTIONS.

GENERAL POWER TOOL SAFETY WARNINGS



WARNING!

Read all safety warnings, instructions, illustrations and specifications provided with this power tool. Failure to follow all instructions listed below may result in electric shock, fire and/or serious injury.

SAVE ALL WARNINGS AND INSTRUCTIONS FOR FUTURE REFERENCE.

The term “power tool” in the warnings refers to your mains-operated (corded) power tool or battery-operated (cordless) power tool.

WORK AREA SAFETY

- **Keep work area clean and well lit.** Cluttered or dark areas invite accidents.
- **Do not operate power tools in explosive atmospheres, such as in the presence of flammable liquids, gases or dust.** Power tools create sparks which may ignite the dust or fumes.
- **Keep children and bystanders away while operating a power tool.** Distractions can cause you to lose control.

ELECTRICAL SAFETY

- **Power tool plugs must match the outlet. Never modify the plug in any way. Do not use any adapter plugs with earthed (grounded) power tools.** Unmodified plugs and matching outlets will reduce risk of electric shock.
- **Avoid body contact with earthed or grounded surfaces, such as pipes, radiators, ranges and refrigerators.** There is an increased risk of electric shock if your body is earthed or grounded.
- **Do not expose power tools to rain or wet conditions.** Water entering a power tool will increase the risk of electric shock.
- **Do not abuse the cord. Never use the cord for carrying, pulling or unplugging the power tool. Keep cord away from heat, oil, sharp edges or moving parts.** Damaged or entangled cords increase the risk of electric shock.
- **When operating a power tool outdoors, use an extension cord suitable for outdoor use.** Use of a cord suitable for outdoor use reduces the risk of electric shock.
- **If operating a power tool in a damp location is unavoidable, use a ground fault circuit interrupter (GFCI) protected supply.** Use of a GFCI reduces the risk of electric shock.

PERSONAL SAFETY

- **Stay alert, watch what you are doing and use common sense when operating a power tool. Do not use a power tool while you are tired or under the influence of drugs, alcohol or medication.** A moment of inattention while operating power tools may result in serious personal injury.
- **Use personal protective equipment. Always wear eye protection.** Protective equipment such as a dust mask, non-skid safety shoes, hard hat or hearing protection used for appropriate conditions will reduce personal injuries.
- **Prevent unintentional starting. Ensure the switch is in the off-position before connecting to power source and/or battery pack, picking up or carrying the tool.** Carrying power tools with your finger on the switch or energizing power tools that have the switch on invites accidents.
- **Remove any adjusting key or wrench before turning the power tool on.** A wrench or a key left attached to a rotating part of the power tool may result in personal injury.
- **Do not overreach. Keep proper footing and balance at all times.** This enables better control of the power tool in unexpected situations.
- **Dress properly. Do not wear loose clothing or jewellery. Keep your hair and clothing away from moving parts.** Loose clothes, jewellery or long hair can be caught in moving parts.
- **If devices are provided for the connection of dust extraction and collection facilities, ensure these are connected and properly used.** Use of dust collection can reduce dust-related hazards.
- **Do not let familiarity gained from frequent use of tools allow you to become complacent and ignore tool safety principles.** A careless action can cause severe injury within a fraction of a second.

POWER TOOL USE AND CARE

- **Do not force the power tool. Use the correct power tool for your application.** The correct power tool will do the job better and safer at the rate for which it was designed.
- **Do not use the power tool if the switch does not turn it on and off.** Any power tool that cannot be controlled with the switch is dangerous and must be repaired.
- **Disconnect the battery pack from the appliance before making any adjustments, changing accessories, or storing appliance.** Such preventive safety measures reduce the risk of starting the appliance accidentally.
- **Store idle power tools out of the reach of children and do not allow persons unfamiliar with the power tool or these instructions to operate the power tool.** Power tools are dangerous in the hands of untrained users.
- **Maintain power tools and accessories. Check for misalignment or binding of moving parts, breakage of parts and any other condition that may affect the power tool's operation. If damaged, have the power tool repaired before use.** Many accidents are caused by poorly maintained power tools.
- **Keep cutting tools sharp and clean.** Properly maintained cutting tools with sharp cutting edges are less likely to bind and are easier to control.
- **Use the power tool, accessories and tool bits, etc., in accordance with these instructions, taking into account the working conditions and the work to be performed.** Use of the power tool for operations different from those intended could result in a hazardous situation.
- **Keep handles and grasping surfaces dry, clean and free from oil and grease.** Slippery handles and grasping surfaces do not allow for safe handling and control of the tool in unexpected situations.

BATTERY TOOL USE AND CARE

- **Recharge only with the charger specified by the manufacturer.** A charger that is suitable for one type of battery pack may create a risk of fire when used with another battery pack.
- **Use power tools only with specifically designated battery packs.** Use of any other battery packs may create a risk of injury and fire.
- **When battery pack is not in use, keep it away from other metal objects, like paper clips, coins, keys, nails, screws or other small metal objects, that can make a connection from one terminal to another.** Shorting the battery terminals together may cause burns or a fire.
- **Under abusive conditions, liquid may be ejected from the battery; avoid contact. If contact accidentally occurs, flush with water. If liquid contacts eyes, additionally seek medical help.** Liquid ejected from the battery may cause irritation or burns.
- **Do not use a battery pack or tool that is damaged or modified.** Damaged or modified batteries may exhibit unpredictable behaviour resulting in fire, explosion or risk of injury.

- **Do not expose a battery pack or tool to fire or excessive temperature.** Exposure to fire or temperature above 130°C (265°F) may cause explosion.
- **Follow all charging instructions and do not charge the battery pack or tool outside the temperature range specified in the instructions.** Charging improperly or at temperatures outside the specified range may damage the battery and increase the risk of fire.

SERVICE

- **Have your power tool serviced by a qualified repair person using only identical replacement parts.** This will ensure that the safety of the power tool is maintained.
- **Never service damaged battery packs.** Service of battery packs should only be performed by the manufacturer or authorized service providers.

HEAT GUN SAFETY WARNINGS

When using heat guns, basic safety precautions should always be followed:

READ ALL INSTRUCTIONS.

- **The nozzle of the heat gun becomes very hot during operation and should not be touched until the tool has cooled.** Always hold the tool by the insulated gripping surface to reduce the risk of serious personal injury.
- **Heat guns produce very high temperatures and must be used with caution to prevent combustible material from igniting. Keep tool in constant motion; do not stop or dwell in one spot.** Following this rule will reduce the risk of fire or serious personal injury.
- **Excessive heat can generate fumes which may be dangerous when inhaled. Wear a dust respirator mask or dual filter respirator mask when using the heat gun.** Following this rule will reduce the risk of serious personal injury.
- **Keep a fully charged fire extinguisher close at hand for emergency use.** Following this rule will reduce the risk of fire or serious injury.
- **Do not leave the heat gun unattended while running or cooling down. Always set tool on a flat, level surface so nozzle tip is directed upwards, away from supporting surface, while running or cooling down.** Following this rule will reduce the risk of fire or serious injury.
- **Always wear eye protection marked to comply with ANSI Z87.1.** Following this rule will reduce the risk of serious personal injury.
- Before using, check all parts for proper function and damage to component parts.
- Do not use this torch to heat, mould or bend plastic sheets, moulding or tubing.



WARNING!

Hidden areas such as behind walls, ceilings, floors, soffit boards and other panels may contain flammable materials that could be ignited by the heat gun when working in these locations.



WARNING!

Extreme care should be taken when stripping paint. The peelings, residue and vapours of paint may contain lead, which is poisonous. Before beginning any paint removal process you should determine whether the paint you are removing contains lead. LEAD-BASED PAINT SHOULD ONLY BE REMOVED BY A PROFESSIONAL AND SHOULD NOT BE REMOVED USING A TORCH.



WARNING!

Do not direct hot tip or nozzle toward clothing, hands, or other body parts. Intense heat from tip or nozzle can cause serious burns or cause clothing to ignite.

PERSONS REMOVING PAINT SHOULD FOLLOW THESE GUIDELINES:

- Move the work piece outdoors. If this is not possible, keep the work area well ventilated.
- Remove or cover any carpets, rugs, furniture, clothing, cooking utensils and air ducts.
- Place drop cloths in the work area to catch any paint chips or peelings. Wear protective clothing such as extra work shirts, overalls and hats. Wash work clothes separately.
- Work in one room at a time. Work areas should be sealed off from the rest of the dwelling by sealing doorways with drop cloths.
- Children, pregnant or potentially pregnant women and nursing mothers should not be present in the work area.
- Keep food and drink out of the work area. Wash hands, arms and face and rinse mouth before eating or drinking. Do not smoke or chew gum or tobacco in the work area.
- Clean up all removed paint and dust by wet mopping the floors. DO NOT SWEEP, DRY DUST OR VACUUM.
- At the end of each work session put the paint chips and debris in a double plastic bag, close it with tape or twist ties and dispose of properly.

ADDITIONAL SAFETY GUIDELINES FOR THE HEAT GUN

- The label on your tool may include the following symbols. The symbols and their definitions are as follows:

V Volts

Hz Hertz

W Watts

A Amperes

min Minutes

⎓ or d.c. Direct current

.../min or ...min⁻¹ Revolutions or reciprocations per minute



..... WARNING – To reduce the risk of injury, user must read instruction manual.



..... WARNING – To reduce the risk of injury, always wear eye protection.



WARNING!

To reduce the risk of electric shock or damage to the charger and battery, use only the Mastercraft® batteries and chargers listed.

BATTERY PACK

054-3124-0, 054-7553-4, 054-7557-6, 054-2434-8

CHARGER

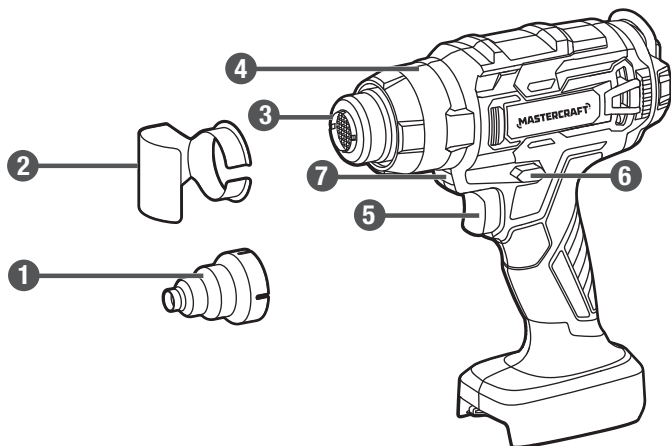
054-3126-6, 054-7559-2, 054-8299-4

- **For best results, your battery and tool should be charged, stored and used in a location where the temperature is more than 5°C (41°F) but less than 40°C (104°F).** Do not store outside or in vehicles.

PACKAGE CONTENTS:

Heat gun, instruction manual, deflector nozzle, concentrator nozzle.

KEY PARTS DIAGRAM



No.	Description
1	Concentrator Nozzle
2	Deflector Nozzle
3	Heat Gun Nozzle
4	Nose Cone

No.	Description
5	Switch Trigger
6	Lock-Off Button
7	LED Light



WARNING!

- Remove the heat gun from the package and examine it carefully. Do not discard the carton or any packaging material until all parts have been examined.
- If any part of the heat gun is missing or damaged, do not attach the tool to a power source or use the tool until the part has been repaired or replaced. Failure to heed this warning could result in serious injury.

OPERATING INSTRUCTIONS

TO ATTACH THE BATTERY PACK (fig 1)

1. Make sure that the heat gun is switched off.
2. Align the raised rib on the battery pack with the grooves on the bottom of the tool, and then slide the battery pack onto the tool.

TO REMOVE THE BATTERY PACK (fig 1)

1. Make sure that the heat gun is switched off.
2. Press the battery-release button to release the battery pack.

LED LIGHT (fig 2)

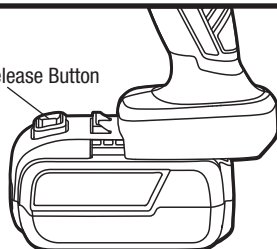
1. The LED light illuminates when the switch trigger is depressed.
2. If the tool is not in use, the time-out feature will cause the light to start fading and then shut off.
3. The LED light illuminates only when there is a charged battery pack in the tool.

HOOK (fig 3)

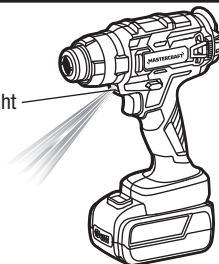
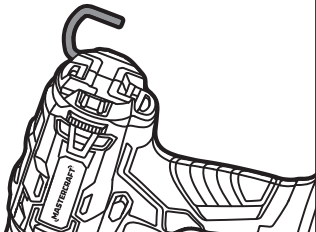
Your tool is equipped with a hook. It can be carried or hung on a suitable size object.

fig 1

Battery-Release Button

**fig 2**

LED Light

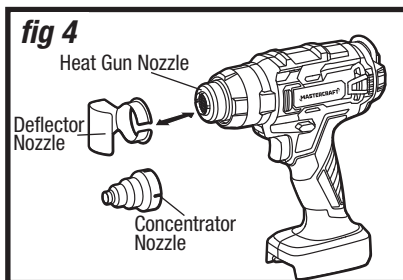
**fig 3**

TO INSTALL ATTACHMENTS (fig 4)

Attachments are included with the heat gun to expand its capabilities. Attachments are installed simply by placing them on the end of the heat gun nozzle.

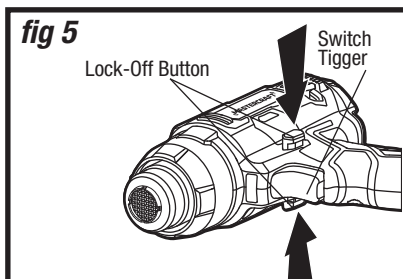
Deflector Nozzle: The deflector nozzle is useful for applying heat to shrinkable tubing and thawing pipes.

Concentrator Nozzle: The concentrator nozzle intensifies the application of heat in a specific area. Uses for this nozzle include bending acrylic plastic sheets and directing heat into corners.



LOCK-OFF BUTTON (fig 5)

1. The lock-off button reduces the possibility of accidental starting.
2. The lock-off button must be depressed from either the left or right side before you pull the switch trigger.
3. The lock resets each time the trigger is released.



TO TURN THE HEAT GUN ON/OFF (fig 5)

1. To turn the heat gun ON: Depress the lock-off button and press the switch trigger.
2. To turn the heat gun OFF: Release the switch trigger.

APPLICATIONS OF THE HEAT GUN

1. Soften paint, caulking and putty for easier removal.
2. Soften adhesives to help remove stickers, floor tiles, wallpaper, etc.
3. Shrink tubing for electrical work.
4. Shrink plastic film for wrapping or weatherproofing.
5. Loosen rusted nuts, bolts, and fittings.

NOTICE: Install or remove attachments only when both the heat gun nozzle and the attachment nozzle are cool.

TO OPERATE THE HEAT GUN (fig 6)

1. Install the battery pack.
2. Turn the heat gun on.
3. Hold heat gun with one hand.
4. Move the heat gun until the nozzle is close to the area being heated.
5. Allow the heat gun and the heated surface to cool thoroughly, then remove the battery pack.

fig 6

NOTICE: Experiment with scrap materials to determine the proper amount of heat, distance and time for your project.

**WARNING!**

- Do not place second hand on top of tool or near nozzle at any time. Holding the tool on or near the nozzle can cause serious personal injury.

MAINTENANCE

BEFORE EACH USE

1. Inspect the heat gun, the switch trigger and the accessories for damage.
2. Check for damaged, missing, or worn parts.
3. Check for loose screws, misalignment or binding of moving parts, or any other condition that may affect the operation.
4. If abnormal vibration or noise occurs, turn the tool off immediately and have the problem corrected before further use.

TO CLEAN THE HEAT GUN

- The heat gun should be kept clean, dry, and free of oil or grease. Only mild soap and a damp cloth should be used to clean the heat gun. Do not allow liquid to enter the tool.
- The high temperatures of the heat gun will cause the nozzle to turn dark over time. This is normal and will not affect its performance or life.
- Ventilation openings must be kept clean and free of foreign matter. The most effective method of cleaning the vents is with compressed air. Do not attempt to clean by inserting pointed objects through the openings. Always wear safety goggles when cleaning tools using compressed air.

STORAGE

Always allow the heat gun to cool to room temperature before storing. Store the heat gun out of reach of children and untrained individuals.



WARNING!

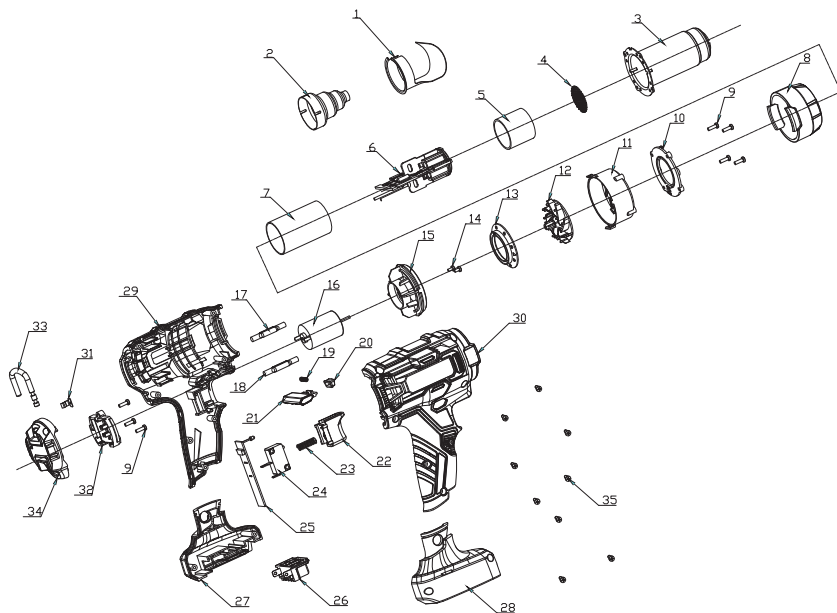
- Do not let brake fluids, gasoline, petroleum-based products, penetrating oil, etc., come into contact with plastic parts. These substances contain chemicals that can damage, weaken, or destroy plastic.
- Use only accessories that are recommended for this gun by the manufacturer. Accessories that may be suitable for one tool may become hazardous when used with another tool.
- Before inspecting, cleaning, or servicing the unit, stop the heat gun, wait for the heat gun to cool, and remove the battery pack. Failure to follow these instructions can result in serious personal injury or property damage.

TROUBLESHOOTING

Problem	Possible Causes	Solution
The heat gun does not start.	The battery is depleted.	Charge the battery.
	The battery is overheated.	Cool the battery and restart the tool.

If the problem remains unsolved after performing the checks described above, call the toll-free helpline at 1-800-689-9928.

EXPLODED VIEW



No.	Part No.	Description
1	0548298601	Deflector Nozzle
2	0548298602	Concentrate Nozzle
3	0548298603	Nozzle
4	0548298604	Metal Wire
5	0548298605	Mica Hose
6	0548298606	Heating Coil Assembly
7	0548298607	Mica Sheet Assembly
8	0548298608	Nozzle Cover
9	0548298609	Screw
10	0548298610	Nozzle Support
11	0548298611	Fan Front Cover
12	0548298612	Fan Rear Cover
13	0548298613	Fan

No.	Part No.	Description
14	0548298614	Screw
15	0548298615	Motor Support
16	0548298616	Motor
17	0548298617	Inner Wire
18	0548298618	Inner Wire
19	0548298619	Lock-off Button
20	0548298620	Spring
21	0548298621	LED Cover
22	0548298622	Trigger Switch
23	0548298623	Spring
24	0548298624	Switch
25	0548298625	PCBA
26	0548298626	Contact Receptacle

No.	Part No.	Description
27	0548298627	Left Foot Housing
28	0548298628	Right Foot Housing
29	0548298629	Left Housing
30	0548298630	Right Housing
31	0548298631	Metal Fastener

No.	Part No.	Description
32	0548298632	Rear Cover Support
33	0548298633	Hook
34	0548298634	Rear Cover
35	0548298635	Screw

If any parts are missing or damaged, or if you have any questions, please call the toll-free helpline at 1-800-689-9928.

This Mastercraft product is guaranteed for a period of **3 years from the date of original retail purchase** against defects in workmanship and materials, except for the following components:

- a) Component A: Batteries, chargers and carrying case, which are guaranteed for a period of 2 years from the date of original retail purchase against defects in workmanship and materials;
- b) Component B: Accessories, which are guaranteed for a period of 1 year from the date of original retail purchase against defects in workmanship and materials.

Subject to the conditions and limitations described below, this product, if returned to us with proof of purchase within the stated warranty period and if covered under this warranty, will be repaired or replaced (with the same model, or one of equal value or specification), at our option. We will bear the cost of any repair or replacement and any costs of labour relating thereto.

These warranties are subject to the following conditions and limitations:

- a) a bill of sale verifying the purchase and purchase date must be provided;
- b) this warranty will not apply to any product or part thereof which is worn or broken or which has become inoperative due to abuse, misuse, accidental damage, neglect or lack of proper installation, operation or maintenance (as outlined in the applicable owner's manual or operating instructions) or which is being used for industrial, professional, commercial or rental purposes;
- c) this warranty will not apply to normal wear and tear or to expendable parts or accessories that may be supplied with the product that are expected to become inoperative or unusable after a reasonable period of use;
- d) this warranty will not apply to routine maintenance and consumable items such as, but not limited to, fuel, lubricants, vacuum bags, blades, belts, sandpaper, bits, fluids, tune-ups or adjustments;
- e) this warranty will not apply where damage is caused by repairs made or attempted by others (i.e., persons not authorized by the manufacturer);
- f) this warranty will not apply to any product that was sold to the original purchaser as a reconditioned or refurbished product (unless otherwise specified in writing);
- g) this warranty will not apply to any product or part thereof if any part from another manufacturer is installed therein or any repairs or alterations have been made or attempted by unauthorized persons;
- h) this warranty will not apply to normal deterioration of the exterior finish, such as, but not limited to, scratches, dents, paint chips, or to any corrosion or discolouring by heat, abrasive and chemical cleaners; and
- i) this warranty will not apply to component parts sold by and identified as the product of another company, which shall be covered under the product manufacturer's warranty, if any.

Additional Limitations

This warranty applies only to the original purchaser and may not be transferred. Neither the retailer nor the manufacturer shall be liable for any other expense, loss or damage, including, without limitation, any indirect, incidental, consequential or exemplary damages arising in connection with the sale, use or inability to use this product.

Notice to Consumer

This warranty gives you specific legal rights, and you may have other rights, which may vary from province to province. The provisions contained in this warranty are not intended to limit, modify, take away from, disclaim or exclude any statutory warranties set forth in any applicable provincial or federal legislation.

Made in China

Imported by

Mastercraft Canada Toronto, Canada M4S 2B8