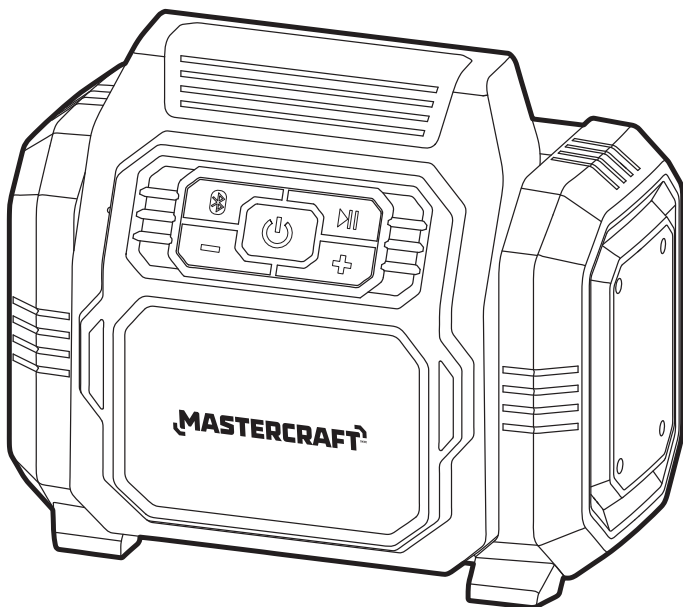


MASTERCRAFT™/MC

BLUETOOTH® SPEAKER

054-8297-8



IMPORTANT:

Read and understand this instruction manual thoroughly before using the product.

INSTRUCTION MANUAL

TABLE OF CONTENTS

Technical Specifications	4
Safety Guidelines	5
Key Parts Diagram	8
Operating Instructions	9
Maintenance	11
Troubleshooting	12
Parts List	13
Warranty	14

NOTE:

If any parts are missing or damaged, or if you have any questions, please call our toll-free helpline at 1-800-689-9928.



SAVE THESE INSTRUCTIONS

- This manual contains important safety and operating instructions. Read all instructions and follow them with use of this product.

TECHNICAL SPECIFICATIONS

Rated Voltage	20V max* d.c.
USB Output Voltage	5V
USB Output Current	2.1A

*Maximum battery voltage without workload; with workload nominal voltage is 18V.

Recommend using tool with Mastercraft® 20V max* Li-ion 4.0 Ah battery (054-7557-6; sold separately) and higher capacity batteries for optimal performance.

SAFETY GUIDELINES:



WARNING!

Safety symbols in this Instruction Manual are used to flag possible dangers. The safety symbols and their explanations require your full understanding. The safety warnings do not, by themselves, eliminate any danger, nor are they substitutes for proper accident prevention measures.



WARNING!

This Safety Alert Symbol indicates caution, warning, or danger. Failure to obey a safety warning can result in serious injury to yourself or others. To reduce the risk of injury, fire, or electric shock, always follow the safety precautions.

KNOW YOUR TOOL

To operate this tool, carefully read this Instruction Manual and all labels affixed to the speaker before using. Keep this instruction manual available for future reference.

IMPORTANT

This tool should only be serviced by a qualified service technician. For more information, call the toll free helpline at 1-800-689-9928.

READ ALL INSTRUCTIONS THOROUGHLY.

GENERAL POWER TOOL SAFETY WARNINGS



WARNING!

Read all safety warnings, instructions, illustrations and specifications provided with this power tool. Failure to follow all instructions listed below may result in electric shock, fire and/or serious injury.

SAVE ALL WARNINGS AND INSTRUCTIONS FOR FUTURE REFERENCE.



The term "power tool" in the warnings refers to your mains-operated (corded) power tool or battery-operated (cordless) power tool.

- **To reduce the risk of fire or electric shock, do not expose this apparatus to rain or moisture. Dry location use only.**
- **Only operate this apparatus in a well-ventilated area.**
- **Clean only with dry cloth.**
- **Do not block any ventilation openings.** Install in accordance with the manufacturer's instructions.
- **Do not install near any heat sources such as radiators, heat registers, stoves, or other apparatus (including amplifiers) that produce heat.**

- **Only use attachments/accessories specified by the manufacturer.**
- **A battery operated apparatus with integral batteries or a separate battery pack must be recharged only with the specified charger for the battery.** A charger that may be suitable for one type of battery may create a risk of fire when used with another battery.
- **Never disassemble the apparatus or try to do any rewiring on the apparatus's electrical system.**
- **Maintain the apparatus. Check for misalignment, breakage of parts and any other condition that may affect the apparatus operation. If damaged, have the apparatus repaired before use. Use the apparatus in accordance with these instructions, taking into account the working conditions and the work to be performed.** Use of the apparatus for operations different from those intended could result in a hazardous situation.
- **Keep the apparatus away from other metal objects, such as paper clips, coins, keys, nails, screws, or other small metal objects that can make a connection from one terminal to another.** Shorting the terminals together may cause burns or a fire.
- **Do not use the apparatus if it has been dropped or received a sharp blow. A damaged apparatus will increase the risk of fire.**
- **Dispose of a used battery promptly. Keep away from children.** Do not disassemble and do not dispose of in fire.

SAVE THESE INSTRUCTIONS.

ADDITIONAL SAFETY GUIDELINES FOR THE SPEAKER

- **The label on your tool may include the following symbols. The symbols and their definitions are as follows:**
 - V Volts
 - A Amperes
 - Hz Hertz
 - W Watts
 - min Minutes
 - or d.c Direct current
 - n_0 No-load speed
 -  WARNING – To reduce the risk of injury, user must read instruction manual.
 -  WARNING – To reduce the risk of injury, always wear ear protection.



WARNING!

To reduce the risk of electric shock or damage to the charger and battery, use only the Mastercraft® batteries and chargers listed.

BATTERY PACK

054-3124-0, 054-7553-4,
054-7557-6, 054-2434-8

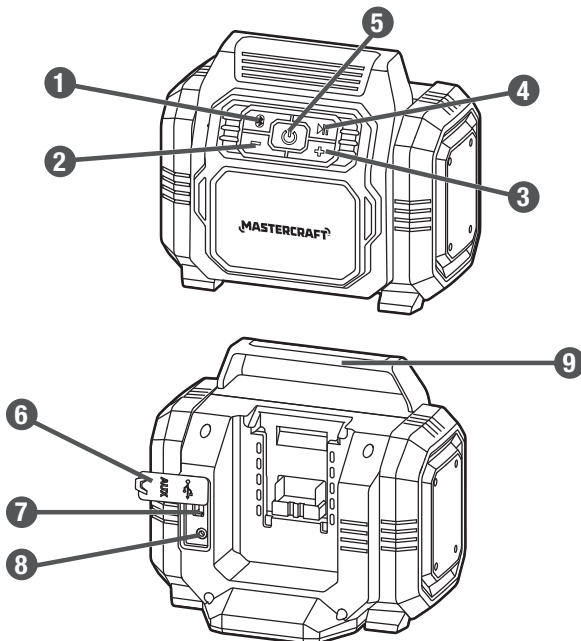
CHARGER

054-3126-6, 054-7559-2,
054-8299-4

- This device contains licence-exempt transmitter(s)/receiver that comply with Innovation, Science and Economic Development Canada's licence-exempt RSS(s). Operation is subject to the following two conditions:
 - 1) This device may not cause interference.
 - 2) This device must accept any interference, including interference that may cause undesired operation of the device.
- **For best results, your battery and tool should be charged, stored and used in a location where the temperature is more than 5°C (41°F) but less than 40°C (104°F).** Do not store outside or in vehicles.

PACKAGE CONTENTS:

Bluetooth® speaker, aux cable and instruction manual

KEY PARTS DIAGRAM

No.	Description
1	Bluetooth® pairing button
2	Volume – button
3	Volume + button
4	Play/pause button
5	On/off button

No.	Description
6	Dustproof cover
7	USB output port
8	Aux input port
9	Handle

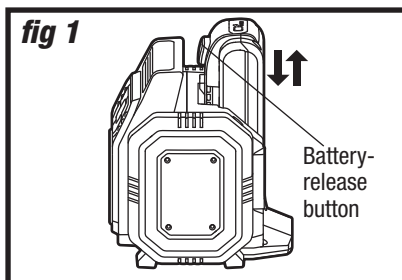
**WARNING!**

- Remove the speaker from the package and examine it carefully. Do not discard the carton or any packaging material until all parts have been examined.
- If any part of the speaker is missing or damaged, do not attach the tool to a power source or use the tool until the part has been repaired or replaced. Failure to heed this warning could result in serious injury.
- Do not allow familiarity with the speaker to cause a lack of alertness. A fraction of a second of carelessness is enough to cause severe injury.

OPERATING INSTRUCTIONS

TO ATTACH THE BATTERY PACK (fig 1)

1. Align the raised rib on the battery pack with the grooves on the speaker, and then slide the battery pack onto the speaker.
2. Make sure that the battery-release button on the battery pack snaps into place and the battery pack is secured to the speaker before beginning operation.

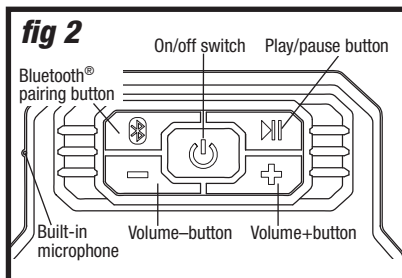


TO REMOVE THE BATTERY PACK (fig 1)

1. Depress the battery-release button located on the front of the battery pack to release the battery pack.
2. Pull the battery pack out and remove it from the speaker.

ON/OFF SWITCH (fig 2)

1. To turn on the speaker, press the on/off button and the Bluetooth® pairing button will illuminate and begin to flash to indicate that the speaker is active.
2. To turn off the speaker, press the on/off button again.



CONNECT TO THE BLUETOOTH® (fig 2)

1. Turn on the speaker. The speaker will default to Bluetooth® pairing mode and the indicator light will flash until it has successfully paired or has timed out.
2. Activate the Bluetooth® function on your Bluetooth® device such as mobile phone, computer etc.; refer to the instructions of your device if necessary.
3. Place your Bluetooth® device close to the speaker. Select Mastercraft 054-8297-8 (name of the speaker) as the default device. The connection should establish within a few seconds and the indicator light from the Bluetooth® pairing button will stop flashing.
4. If previously paired to the desired device, the speaker will automatically reconnect to the same device when the speaker is turned on.
5. To pair the speaker to a different device, press and hold the Bluetooth® pairing button for 3 seconds until the indicator light flashes. The speaker will then be in Bluetooth® pairing mode and can be connected to a different device.

VOLUME (fig 2)

Use the volume + button and volume – button to increase or decrease the volume of the speaker, respectively. Long press the volume + button or volume – button to achieve next track or previous track.

PLAY/PAUSE BUTTON (fig 2)

You can pause the music by pressing the play/pause button. Press the play/pause button again to continue playing music.

USB OUTPUT PORT (fig 3)

When a battery pack is installed and the speaker is turned on, the USB output port on the Bluetooth® speaker supplies a charging point suitable for your cell phone or other small USB device.

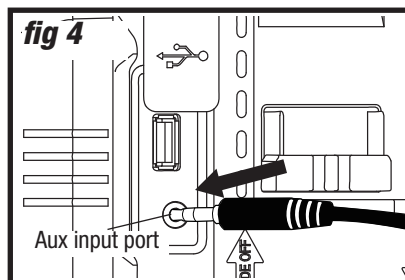
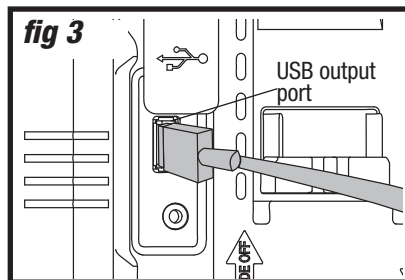
BUILT-IN MICROPHONE FOR HANDS-FREE CALLS (fig 2)

You can listen through the speaker and speak through the built-in microphone during phone calls after Bluetooth®-pairing. To answer a phone call when your device is connected via Bluetooth®, press the play/pause button. To end the call, press the play/pause button again.

CONNECTING DIRECTLY TO AUX DEVICE (fig 4)

Plug one end of the aux cable into aux input port and the other end to an MP3 player, CD player, or other audio device, making sure that they are properly connected.

Turn on the Bluetooth® speaker. The speaker will be in aux mode and the indicator light will shine blue.



NOTICE: Any device that uses more than 2.1A current will trip a self-resetting overload switch and disable the output. To reset the Bluetooth® speaker, remove the device and turn on the Bluetooth® speaker.

MAINTENANCE

STORAGE

1. Switch the product off and remove the battery pack.
2. Clean the product.
3. Store the product and its accessories in a dark, dry, frost-free, well-ventilated place.
4. Always store the product in a place that is inaccessible to children.
5. We recommend using the original package for storage or covering the product with a suitable cloth or enclosure to protect it against dust.

TRANSPORTATION

1. Switch the product off and remove the battery pack.
2. Attach transportation guards, if applicable.
3. Always carry the product by its handle.
4. Protect the product from any heavy impact or strong vibrations which may occur during transportation in vehicles.
5. Secure the product to prevent it from slipping or falling over.



WARNING!

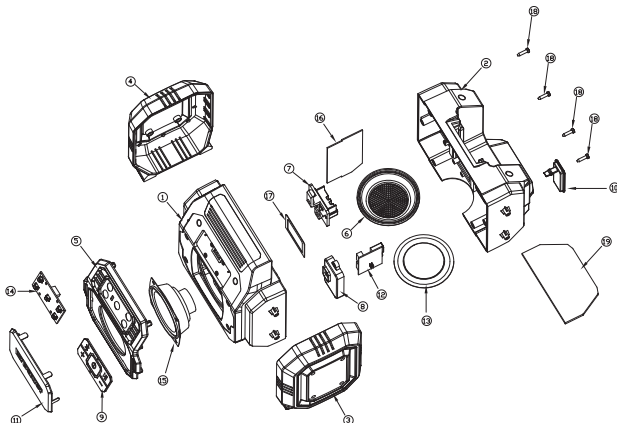
- Do not let brake fluids, gasoline, petroleum-based products, penetrating oil, etc., come into contact with plastic parts. These substances contain chemicals that can damage, weaken, or destroy plastic.
- When servicing, use only identical replacement parts. The use of any other parts may create a hazard or cause damage to the product.
- Use only accessories that are recommended for this speaker by the manufacturer. Accessories that may be suitable for one tool may become hazardous when used with another tool.
- To ensure safety and reliability, all repairs should be performed by a qualified service technician.

TROUBLESHOOTING

Problem	Possible Causes	Solution
The speaker does not start.	The battery is depleted.	Charge the battery.
Bluetooth® speaker is not charging USB device.	The device draws more than the rated output of the port.	Remove the device and turn on the Bluetooth® speaker again.
Bluetooth® speaker is not properly paired with audio device by Bluetooth®.	Out of Bluetooth® pairing range.	Move your device or speaker into 100' (30 m) connecting range.
	The speaker is connected to the aux cable.	Unplug the aux cable and connect the speaker by Bluetooth®.
	Wrong action of pairing operation.	Refer to connect to the Bluetooth® and correctly pair the device to the speaker.

If the problem remains unsolved after performing the checks described above, call the toll-free helpline at 1-800-689-9928.

EXPLODED VIEW



No.	Part No.	Description
1	0548297801	Front Housing
2	0548297802	Rear Housing
3	0548297803	Left Housing
4	0548297804	Right Housing
5	0548297805	Metal Mesh Support
6	0548297806	Resonant Diaphragm Support
7	0548297807	Battery Contact Receptacle
8	0548297808	Seal Cover
9	0548297809	Press Button
10	0548297810	Silicone Cover

No.	Part No.	Description
11	0548297811	Metal Mesh
12	0548297812	Output Port PCBA
13	0548297813	Resonant Diaphragm
14	0548297814	Press Button PCBA
15	0548297815	Speaker
16	0548297816	Main PCB
17	0548297817	EVA Seal Ring
18	0548297818	Screw
19	0548297819	Pads

If any parts are missing or damaged, or if you have any questions, please call the Toll-free Helpline, at 1-800-689-9928.

This Mastercraft product is guaranteed for a period of **3 years from the date of original retail purchase** against defects in workmanship and materials, except for the following components:

- a) Component A: Batteries, chargers and carrying case, which are guaranteed for a period of 2 years from the date of original retail purchase against defects in workmanship and materials;
- b) Component B: Accessories, which are guaranteed for a period of 1 year from the date of original retail purchase against defects in workmanship and materials.

Subject to the conditions and limitations described below, this product, if returned to us with proof of purchase within the stated warranty period and if covered under this warranty, will be repaired or replaced (with the same model, or one of equal value or specification), at our option. We will bear the cost of any repair or replacement and any costs of labour relating thereto.

These warranties are subject to the following conditions and limitations:

- a) a bill of sale verifying the purchase and purchase date must be provided;
- b) this warranty will not apply to any product or part thereof which is worn or broken or which has become inoperative due to abuse, misuse, accidental damage, neglect or lack of proper installation, operation or maintenance (as outlined in the applicable owner's manual or operating instructions) or which is being used for industrial, professional, commercial or rental purposes;
- c) this warranty will not apply to normal wear and tear or to expendable parts or accessories that may be supplied with the product that are expected to become inoperative or unusable after a reasonable period of use;
- d) this warranty will not apply to routine maintenance and consumable items such as, but not limited to, fuel, lubricants, vacuum bags, blades, belts, sandpaper, bits, fluids, tune-ups or adjustments;
- e) this warranty will not apply where damage is caused by repairs made or attempted by others (i.e. persons not authorized by the manufacturer);
- f) this warranty will not apply to any product that was sold to the original purchaser as a reconditioned or refurbished product (unless otherwise specified in writing);
- g) this warranty will not apply to any product or part thereof if any part from another manufacturer is installed therein or any repairs or alterations have been made or attempted by unauthorized persons;
- h) this warranty will not apply to normal deterioration of the exterior finish, such as, but not limited to, scratches, dents, paint chips, or to any corrosion or discolouring by heat, abrasive and chemical cleaners; and
- i) this warranty will not apply to component parts sold by and identified as the product of another company, which shall be covered under the product manufacturer's warranty, if any.

Additional Limitations

This warranty applies only to the original purchaser and may not be transferred. Neither the retailer nor the manufacturer shall be liable for any other expense, loss or damage, including, without limitation, any indirect, incidental, consequential or exemplary damages arising in connection with the sale, use or inability to use this product.

Notice to Consumer

This warranty gives you specific legal rights, and you may have other rights, which may vary from province to province. The provisions contained in this warranty are not intended to limit, modify, take away from, disclaim or exclude any statutory warranties set forth in any applicable provincial or federal legislation.

Made in China

Imported by

Mastercraft Canada Toronto, Canada M4S 2B8

WARRANTY

