

**MAXIMUM<sup>®</sup>**

**40<sup>V</sup><sup>MAX</sup>**

**1/2" Brushless Impact Wrench**



**Model No. 054-7989-8**

**IMPORTANT:**

Please read this manual carefully before using this product and save it for reference.

**INSTRUCTION  
MANUAL**



<b>TABLE OF CONTENTS</b>	
TECHNICAL SPECIFICATIONS	4
SAFETY INSTRUCTIONS	5
IMPORTANT INFORMATION	9
SYMBOLS	10
PARTS LIST	11
KNOW YOUR TOOL	12
OPERATING INSTRUCTIONS	13
MAINTENANCE	19
WARRANTY	21

**NOTE:** If any parts are missing or damaged, or if you have any questions, please call our toll-free helpline at 1-888-670-6682.



**SAVE THESE INSTRUCTIONS**

This manual contains important safety and operating instructions. Read all instructions and follow them with use of this product.

model no. 054-7989-8 | contact us 1-888-670-6682

MAXIMUM®

## TECHNICAL SPECIFICATIONS

MOTOR	40V DC
DRIVE	1/2" (12.7 mm) square
VARIABLE SPEEDS (NO-LOAD)	Low: 0-400 RPM / 0-800 BPM Medium: 0-800 RPM / 0-1600 BPM High: 0-1800 RPM / 0-2200 BPM
MAX. TORQUE	850 ft-lb
ON-BOARD WORK LIGHT	LED
COMPATIBLE MAXIMUM® BATTERY	XVOLT battery pack 054-7983-0
COMPATIBLE MAXIMUM® CHARGER	054-7985-6
OPTIMUM CHARGING TEMPERATURE	40–104°F (4–40°C)
CHARGING TIME	80 min, diagnostic
DIMENSIONS	8-15/16 x 9-29/64 x 3-37/64" (227 x 240 x 91 mm)
NET WEIGHT	6 lb 15 oz (3.15 kg) without battery

## GENERAL POWER TOOL SAFETY WARNINGS

Save all warnings and instructions for future reference.

The term “power tool” in the warnings refers to your mains-operated (corded) power tool or battery-operated (cordless) power tool.

## WORK AREA SAFETY

- **Keep work area clean and well lit.** Cluttered or dark areas invite accidents.
- **Do not operate power tools in explosive atmospheres, such as in the presence of flammable liquids, gases or dust.** Power tools create sparks which may ignite the dust or fumes.
- **Keep children and bystanders away while operating a power tool.** Distractions can cause you to lose control.

## ELECTRICAL SAFETY

- **Power tool plugs must match the outlet. Never modify the plug in any way. Do not use any adaptor plugs with earthed (grounded) power tools.** Unmodified plugs and matching outlets will reduce risk of electric shock.
- **Avoid body contact with earthed or grounded surfaces, such as pipes, radiators, ranges and refrigerators.** There is an increased risk of electric shock if your body is earthed or grounded.
- **Do not expose power tools to rain or wet conditions.** Water entering a power tool will increase the risk of electric shock.
- **Do not abuse the cord. Never use the cord for carrying, pulling or unplugging the power tool. Keep cord away from heat, oil, sharp edges or moving parts.** Damaged or entangled cords increase the risk of electric shock.
- **When operating a power tool outdoors, use an extension cord suitable for outdoor use.** Use of a cord suitable for outdoor use reduces the risk of electric shock.
- **If operating a power tool in a damp location is unavoidable, use a Residual Current Device (RCD) protected supply.** Use of an RCD reduces the risk of electric shock.

## PERSONAL SAFETY

- **Stay alert, watch what you are doing and use common sense when operating a power tool. Do not use a power tool while you are tired or under the influence**



## WARNING!

**Read all safety warnings, instructions, illustrations and specifications provided with this power tool.** Failure to follow all instructions listed below may result in electric shock, fire and/or serious injury.

of drugs, alcohol or medication. A moment of inattention while operating power tools may result in serious personal injury.

- **Use personal protective equipment. Always wear eye protection.** Protective equipment such as dust mask, non-skid safety shoes, hard hat, or hearing protection used for appropriate conditions will reduce personal injuries.
- **Prevent unintentional starting. Ensure the switch is in the off-position before connecting to power source and/or battery pack, picking up or carrying the tool.** Carrying power tools with your finger on the switch or energising power tools that have the switch on invites accidents.
- **Remove any adjusting key or wrench before turning the power tool on.** A wrench or a key left attached to a rotating part of the power tool may result in personal injury.
- **Do not overreach. Keep proper footing and balance at all times.** This enables better control of the power tool in unexpected situations.
- **Dress properly. Do not wear loose clothing or jewellery. Keep your hair, clothing and gloves away from moving parts.** Loose clothes, jewellery or long hair can be caught in moving parts.
- **If devices are provided for the connection of dust extraction and collection facilities, ensure these are connected and properly used.** Use of dust collection can reduce dust-related hazards.
- **Do not let familiarity gained from frequent use of tools allow you to become complacent and ignore tool safety principles.** A careless action can cause severe injury within a fraction of a second.

#### POWER TOOL USE AND CARE

- **Do not force the power tool. Use the correct power tool for your application.** The correct power tool will do the job better and safer at the rate for which it was designed.
- **Do not use the power tool if the switch does not turn it on and off.** Any power tool that cannot be controlled with the switch is dangerous and must be repaired.
- **Disconnect the plug from the power source and/or remove the battery pack, if detachable, from the power tool before making any adjustments, changing accessories, or storing power tools.** Such preventive safety measures reduce the risk of starting the power tool accidentally.
- **Store idle power tools out of the reach of children and do not allow persons unfamiliar with the power tool or these instructions to operate the power tool.** Power tools are dangerous in the hands of untrained users.
- **Maintain power tools and accessories. Check for misalignment or binding of moving parts, breakage of parts and any other condition that may affect the power tool's operation. If damaged, have the power tool repaired before use.** Many accidents are caused by poorly maintained power tools.
- **Keep cutting tools sharp and clean.** Properly maintained cutting tools with sharp cutting edges are less likely to bind and are easier to control.

- **Use the power tool, accessories and tool bits etc., in accordance with these instructions, taking into account the working conditions and the work to be performed.** Use of the power tool for operations different from those intended could result in a hazardous situation.
- **Keep handles and grasping surfaces dry, clean and free from oil and grease.** Slippery handles and grasping surfaces do not allow for safe handling and control of the tool in unexpected situations.

#### BATTERY TOOL USE AND CARE

- **Recharge only with the charger specified by the manufacturer.** A charger that is suitable for one type of battery pack may create a risk of fire when used with another battery pack.
- **Use power tools only with specifically designated battery packs.** Use of any other battery packs may create a risk of injury and fire.
- **When battery pack is not in use, keep it away from other metal objects, like paper clips, coins, keys, nails, screws or other small metal objects, that can make a connection from one terminal to another.** Shorting the battery terminals together may cause burns or a fire.
- **Under abusive conditions, liquid may be ejected from the battery; avoid contact. If contact accidentally occurs, flush with water. If liquid contacts eyes, additionally seek medical help.** Liquid ejected from the battery may cause irritation or burns.
- **Do not use a battery pack or tool that is damaged or modified.** Damaged or modified batteries may exhibit unpredictable behaviour resulting in fire, explosion or risk of injury.
- **Do not expose a battery pack or tool to fire or excessive temperature.** Exposure to fire or temperature above 266°F (130°C) may cause explosion.
- **Follow all charging instructions and do not charge the battery pack or tool outside the temperature range specified in the instructions.** Charging improperly or at temperatures outside the specified range may damage the battery and increase the risk of fire.

#### SERVICE

- **Have your power tool serviced by a qualified repair person using only identical replacement parts.** This will ensure that the safety of the power tool is maintained.
- **Never service damaged battery packs.** Service of battery packs should only be performed by the manufacturer or authorized service providers.

#### SPECIFIC SAFETY RULES FOR CORDLESS IMPACT WRENCH

- **Do not let comfort or familiarity with product (gained from repeated use) replace strict adherence to impact wrench safety rules.** If you use this tool unsafely or incorrectly, you can suffer serious personal injury.
- **Hold the power tool by insulated gripping surfaces when performing an operation where the fastener may contact hidden wiring.** Fasteners contacting

model no. 054-7989-8 | contact us 1-888-670-6682

MAXIMUM®

a “live” wire may make exposed metal parts of the power tool “live” and could give the operator an electric shock.

- **Wear ear protectors.**
- **Check the socket carefully for wear, cracks or damage before installation.**
- **Hold the tool firmly.**
- **Always be sure you have a firm footing.** Be sure no one is below when using the tool in high locations.
- **The proper fastening torque may differ depending upon the kind or size of the bolt.** Check the torque with a torque wrench.

#### SAFETY INSTRUCTIONS FOR BATTERY PACK AND CHARGER

- **If the battery pack casing is cracked or damaged, do not insert into charger.** There is a danger of electric shock or electrocution.
- **Don't allow any liquid to get inside charger.** Electric shock may result. To facilitate cooling of the battery pack after use, avoid placing the charger or battery pack in a warm environment such as in a metal shed or a trailer that is not insulated.
- **This charger is not intended for any uses other than charging rechargeable batteries.** Any other use may result in risk of fire, electric shock or electrocution.
- **Do not place any object on top of the charger or place the charger on a soft surface that may result in excessive internal heat.** Do not place the charger near any heat source.
- **To reduce the potential risk of damage to the electric plug and cord,** pull by the plug rather than the cord when disconnecting the charger from the power supply.
- **Make sure the cord is located so it will not be stepped on, tripped over, or otherwise subjected to damage or stress.**
- **An extension cord should not be used unless absolutely necessary.** Use of an improper extension cord could result in a risk of fire, electric shock or electrocution.
- **Do not operate the charger if it has received a sharp blow, been dropped or otherwise damaged in any way.**
- **Do not disassemble charger.** Take it to an authorized repair facility when service or repair is required. Incorrect reassembly may result in a risk of electric shock, electrocution or fire.
- **To prevent the risk of electric shock, unplug the charger from the outlet before attempting to clean it.** Only removing the battery pack from the charger will not reduce this risk.
- **DO NOT** store or use the tool and battery pack in locations where the temperature may reach or exceed 122 °F (50 °C), which can lead to deterioration of the storage battery.
- **The charger is designed to operate on standard household electrical power (120 V AC).** Do not attempt to use it on any other voltage.

#### ADDITIONAL INFORMATION ON BATTERY AND CHARGER

- The battery pack is not fully charged out of the carton. First read the safety instructions and then follow the charging notes and procedures.
- The longest life and best performance can be obtained if the battery pack is charged when the air temperature is 59–77 °F (15–25 °C). Do not charge the battery pack where the air temperature is below 32 °F (0 °C) or above 113 °F (45 °C). This is important and will prevent damage to the battery pack.
- Do not incinerate the battery pack even if it is seriously damaged or is completely worn out. The battery can explode in a fire.
- Never attempt to open the battery pack for any reason. If the plastic housing of the battery pack breaks or cracks, immediately discontinue use and do not recharge.
- The length of service from your battery will depend on the type of work you are doing. The battery has been designed to provide maximum trouble-free life. However, like all batteries, it will eventually wear out.
- To obtain the longest possible battery life, we suggest the following:
  - Store and charge your battery in a cool area. Temperatures above or below normal room temperature will shorten battery life.
  - Never store the battery in a discharged condition. Recharge it immediately after it has been discharged.
- All batteries gradually lose their charge. The higher the temperature, the quicker they lose their charge. If you store your tool for long periods of time without use, recharge the battery every month or two. This practice will prolong battery life.

#### BATTERY PACK REMOVAL AND PREPARATION FOR RECYCLING

To preserve natural resources, please recycle or dispose of batteries properly. This product contains a lithium-ion battery. Local, provincial or federal laws may prohibit disposal of lithium-ion batteries in ordinary trash. Consult your local waste authority for information regarding available recycling and/or disposal options.



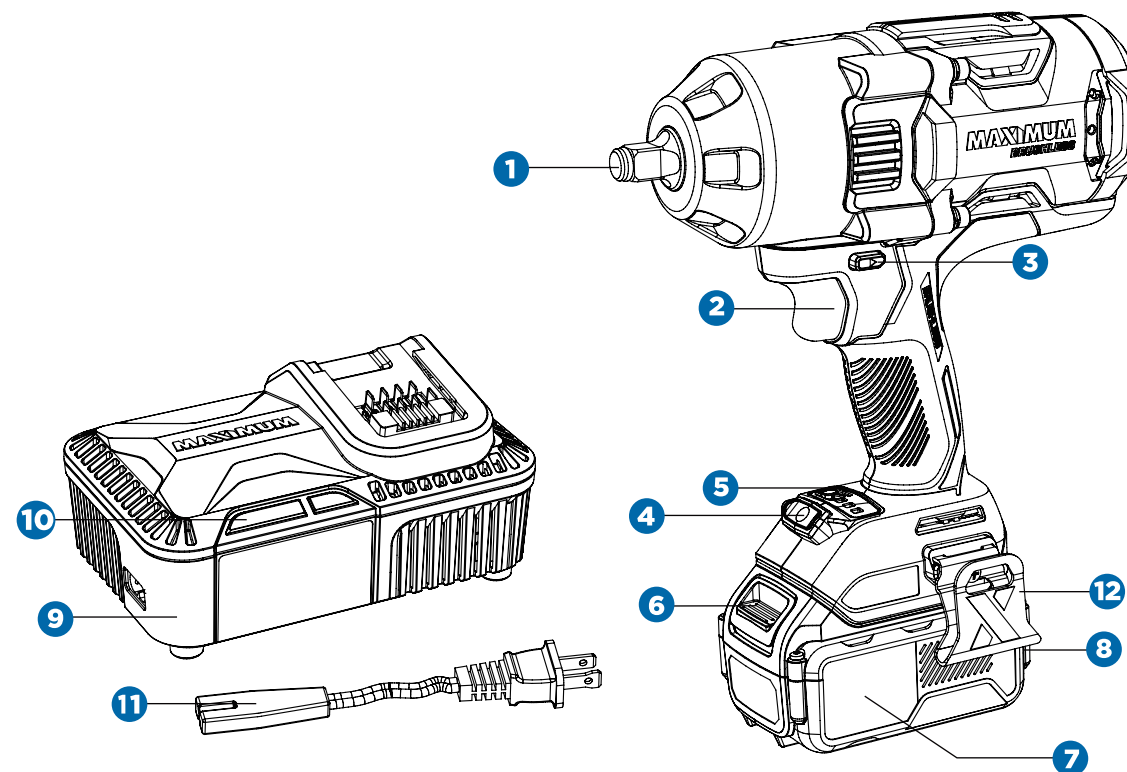
SYMBOLS

Some of the following symbols may be used on this tool. Please study them and learn their meaning. Proper interpretation of these symbols will allow you to operate the tool better and more safety.

No.	Description
V	Volts
A	Amperes
Hz	Hertz
W	Watts
n <sub>0</sub>	No-load speed
RPM	Revolutions per minute
BPM	Beats per minute
~	Alternating current
≡	Direct current
Ah	Ampere-hours
Li-ion	Lithium-ion battery
Ø	Diameter
BFP	Backfeed protection
⚠	Safety alert symbol
📖	To reduce the risk of injury, user must read operator's manual.
👁	Always wear eye protection.
👂	Always wear hearing protection when operating this product.
♻️	Contains lithium-ion battery. Battery must be recycled or disposed of properly.
ETL	Conforms to bear the ETL mark and complies with relevant industry standards.

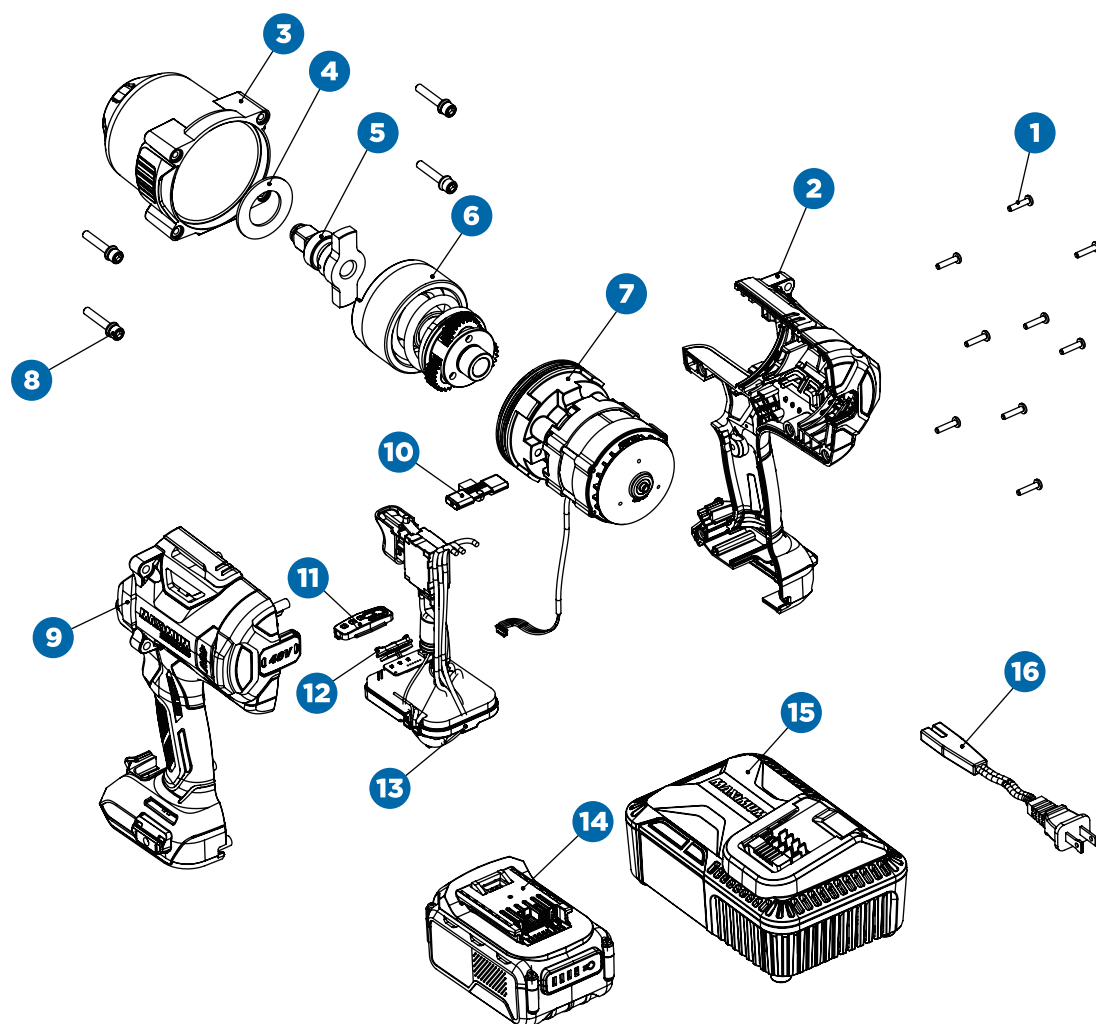
No.	Description
1	1/2" (12.7 mm) square anvil
2	Trigger switch
3	Forward and reverse lever
4	LED worklight
5	Speed selector
6	Battery release button

No.	Description
7	Rechargeable battery pack
8	Fuel gauge
9	Charger
10	Charging indicator
11	Detachable cable and plug
12	Removable belt hook



WARNING!

- Remove the product and any accessories from the package. Inspect the tool carefully to make sure no breakage or damage occurred during shipping.
- Do not discard the carton or any packaging material until all parts have been examined.



NO.	DESCRIPTION	NO.	DESCRIPTION
1	Screw	9	Left housing
2	Right housing	10	Forward and reverse lever
3	Gear box assembly	11	Power indicator cover
4	Washer	12	Led cover
5	1/2" Output shaft	13	Switch and PCBA assembly
6	Anvil assembly	14	Battery pack
7	Motor assembly	15	Charger
8	Screw	16	Detachable cable and plug

### FITTING AND REMOVING THE BATTERY PACK TO THE IMPACT WRENCH

- To install the battery pack to the tool, align the raised portion of the battery pack with the grooves on the bottom of the tool, and slide it firmly into the handle until you hear the lock snap into place (Fig. A).
- To remove the battery pack from the tool, press the battery pack release button and slide the battery pack completely out of tool handle.

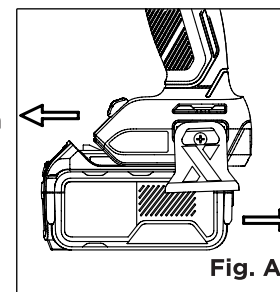


Fig. A

### CHARGING PROCEDURE

- Connect the plug cable to the charger, and then plug into an appropriate outlet before inserting battery pack (Fig. B). The green light will be on for two seconds and then off.
- Insert the battery pack into the charger, making sure the pack is fully seated in the charger (Fig. C). The green (charging) light will blink continuously, indicating that the charging process has started.
- The completion of charge will be indicated by the green light remaining on continuously. The battery pack is fully charged and may be used at this time. To remove the battery pack from the charger, slide the battery pack out of the seat.

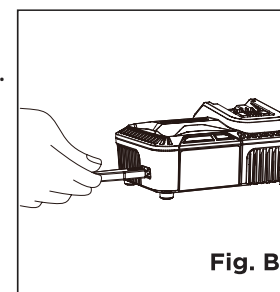


Fig. B



### WARNING!

- Do not allow familiarity with tools to make you careless. Remember that a careless fraction of a second is enough to cause severe injury.
- Before attempting to use this cordless tool, become familiar with all of its operating features and safety requirements.
- To reduce the risk of serious personal injury, turn tool off and disconnect battery pack before making any adjustments or removing/installing attachments or accessories.



### CAUTION!

- Before attempting to charge the battery, check the charger and the battery to ensure the charging equipment matches the battery supplied. The components are all labelled with component numbers.
- The rechargeable battery is not fully charged on leaving the factory. Charge the rechargeable battery before first use.
- Recharge discharged batteries as soon as possible after use or battery life may be greatly diminished. For longest battery life, do not discharge batteries fully.

**CHARGER INDICATORS AND DIAGNOSTICS (FIG. D)**

The charger is designed to detect certain problems that can arise with battery packs.

- When the charger detects the battery pack is too hot or too cold, the red light will light up and stay on, suspending charging. If the battery pack is overheated, please remove the battery pack from the charger and allow it to cool down for 15-30 minutes and re-insert. If the battery pack is too cold, please remove the battery pack from the charger and allow the battery pack to reach an optimum temperature before re-insert the battery pack. This feature ensures maximum battery life.
- When the charger detects a malfunction in the battery pack or a malfunction of the charger itself, the red light will light up and continue to blink. If this occurs, please remove the battery pack and allow it to cool down for 15-30 minutes. Then re-insert the battery pack into the charger. If the red light still flashes, try a different battery pack to determine if the charger is working properly. If the new pack charges correctly, then the original pack is defective and may require service. If the new battery pack shows the same trouble indication as the original pack, this could mean a problem with the charger.

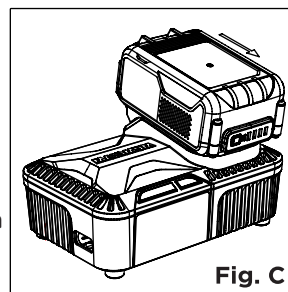


Fig. C

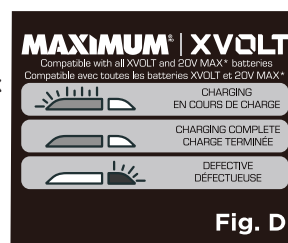


Fig. D

**FUEL GAUGE**

The lithium-ion battery pack is equipped with a fuel gauge which consists of four green LED lights that indicate the level of charge remaining in the battery pack. Press the fuel gauge button to display the LED lights, showing the approximate level of charge.

LED INDICATOR	REMAINING POWER STATUS
1	0-20 %
2	20-40 %
3	40-75 %
4	75-100 %

**CAUTION!**

The working temperature of the charger is 4 to 40°C (40 to 104°F).

**NOTE:** Charging times may be longer depending on the surrounding temperature and battery condition.

**ON/OFF TRIGGER SWITCH**

To turn the tool on, squeeze the trigger switch. To turn the tool off, release the trigger switch.

**VARIABLE SPEED**

The variable speed trigger switch delivers higher speed with increased trigger pressure and lower speed with decreased trigger pressure.

**SPEED SELECTOR**

The tool is equipped with a speed selector, which allows you to select one of three speeds. Select the speed based on the application by pressing the "C" button and control the speed of the tool using the trigger switch. The wrench is pre-set to highest speed mode setting when shipped from the manufacturer.

**FORWARD AND REVERSE**

The direction of bit rotation is reversible and is controlled by a selector located above the trigger switch (Fig. E).

With the impact wrench held in normal operating positions:

- Position the forward/reverse selector to the left of the tool for forward.
- Position the forward/reverse selector to the right of the tool for reverse.
- Position the forward/reverse selector in the centre will lock the switch trigger to help reduce the possibility of accidental starting when not in use.

**INSTALLING AND REMOVING A SOCKET**

Always use the correct size socket for bolts and nuts. An incorrect size socket will result in inaccurate and inconsistent fastening torque and/or damage to the bolt or nut.

**NOTE:** The impact wrench will not run unless the direction of forward/reverse selector is engaged fully to the left or right.

**CAUTION!**

To prevent gear damage, always allow the chuck to come to a complete stop before changing the direction of rotation.

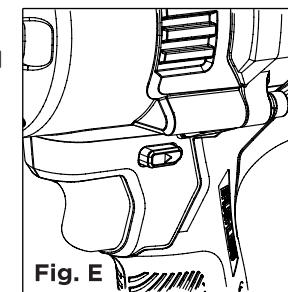


Fig. E

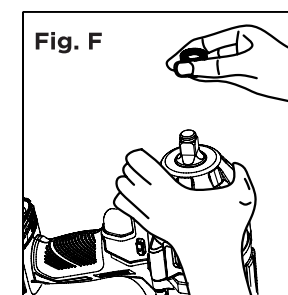


Fig. F



To install the socket, push it onto the anvil of the tool until it locks into place (Fig. F). To remove the socket, simply pull it off.

### LED WORKLIGHT

When the unit is switched on, the LED worklight also comes on to ensure better vision and to make working in dark areas safer. The LED worklight remains on for 15 seconds after the trigger switch is released.

### BELT HOOK

The belt hook is used to hang the tool from your waist belt while working. Install the belt hook securely in the groove of the wrench and tighten the screw to fix the hook firmly (Fig. G).

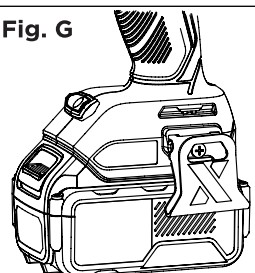
### TEMPERATURE CUT OUT

When used as intended, the wrench cannot be subject to overload. But running continuously at full load for a long time will cause the battery pack to overheat. If the allowable battery temperature range of 32-158°F (0-70°C) is exceeded, the battery pack will automatically stop operating and will not restart until it has cooled to a safe level.

### LOW-VOLTAGE CUT-OUT

The battery pack used on this tool is fitted with a low-voltage cut-out feature within the circuitry. The low-voltage cut-out feature operates when the voltage drops below a pre-set value. This feature automatically stops the tool from operating. When this condition occurs you will need to either insert another battery pack into the tool or recharge the existing battery pack.

Fig. G



### WARNING!

Do not insert or remove socket while the tool is activated. Make sure the battery pack is removed or the forward and reverse lever is in the centre locked position when inserting or removing socket.



### CAUTION!

- When using the belt hook, hang the power tool firmly so as not to drop it accidentally. If the power tool is dropped, it may lead to an accident.
- When carrying the tool hooked to your waist belt, do not fit any bit to the top of the power tool, as this may lead to accidental injury.

### TIGHTENING FASTENERS

Before starting your job, always perform a test operation to determine the proper fastening time for your bolt or nut.

- Install the socket on the anvil. Then, set the forward and reverse lever on the appropriate setting (forward or reverse).
- Hold the tool firmly and place the socket in line with the bolt or nut.
- Press the trigger switch to turn on the impact wrench. The variable speed trigger switch delivers higher speed with increased trigger pressure and lower speed with decreased trigger pressure.
- Fasten the bolt or nut to the proper torque.
- To turn the impact wrench off, release the trigger switch.
- After fastening, always check the torque with a torque wrench.

Practice with various fasteners, noting the length of time required to reach the desired torque. Check the tightness with a torque wrench. If the fasteners are too tight, reduce the impacting time. If they are not tight enough, increase the impacting time.

The fastening torque is affected by a wide variety of factors, including the following:

- Socket. Failure to use the correct size socket will cause a reduction in the fastening torque. A worn socket (wear on the hex end or square end) will cause a reduction in the fastening torque.
- Bolt. The proper fastening torque will differ according to the diameter of the bolt, the torque coefficient, the bolt length, and the class of bolt.
- The use of a universal joint or an extension bar (both available separately) will reduce the fastening force of the impact wrench somewhat. Compensate by fastening for a longer period of time.
- The manner of holding the tool or the material to be fastened will affect the torque.

### NOTE:

- The impact wrench will not restart until the battery pack has cooled.
- Do not force cool the pack in any way. Do not place in refrigerator or freezer. To reduce the temperature of the cells remove the battery pack from the tool and place the battery pack in a free air environment, out of direct sunlight or any other heat source.

**NOTE:** Attempting to restart the tool without either recharging the battery or installing another battery (with charge) will lead to tool restarting and then stopping again, after only a few seconds of operation.

**LOOSENING FASTENERS**

- With the proper impact socket securely mounted to the cordless impact wrench, slide the impact socket on to the bolt head.
- Verify that the rotational direction is “reverse”.
- Hold the tool securely with both hands and squeeze the trigger switch. The tool will start to impact immediately.
- Once the fastener has “broken loose” it will start to unthread. Be careful that you do not allow a fastener to spin freely once it is no longer engaged with the other threaded part, as it may be thrown out of the socket.

**NOTE:**

- Hold the tool straight along the axis of the bolt or nut.
- Excessive fastening torque may damage the bolt/nut or socket.

**NOTE:**

The torque that is required to loosen a fastener averages 75% to 80% of the tightening torque, depending on the condition of the contacting surfaces. However, if rust or corrosion causes seizing, more torque may be required.

**GENERAL MAINTENANCE**

Avoid using solvents when cleaning plastic parts. Most plastics are susceptible to damage from various types of commercial solvents and may be damaged by their use. Use clean cloths to remove dirt, dust, oil, grease, etc.

**BATTERIES**

The battery pack is equipped with lithium-ion rechargeable batteries. The duration of use from each charge will depend on the type of work performed.

The batteries in this tool have been designed to provide maximum trouble-free life. Like all batteries, they will eventually wear out. Do not disassemble the battery pack or attempt to replace the batteries. Handling of the batteries, especially when wearing rings and jewellery, could result in a serious burn.

To obtain the longest possible battery life, read and understand the operator's manual.

- It is good practice to unplug the charger/adaptor and remove the lithium-ion battery pack when not in use.

**FOR LITHIUM-ION BATTERY PACK STORAGE LONGER THAN 30 DAYS:**

- Store the lithium-ion battery pack where the temperature is below 79°F (26°C) in a moisture-free environment.
- Store lithium-ion battery packs in a 30-50% charged condition.
- Every six months of storage, fully charge the lithium-ion battery pack.
- Exterior may be cleaned with a cloth or soft non-metallic brush.

**WARNING!**

- To avoid serious personal injury, always remove the battery pack from the tool when cleaning or performing any maintenance.
- When servicing, use only identical replacement parts. Use of any other parts may create a hazard or cause product damage. To ensure safety and reliability, all repairs should be performed by a qualified service technician.
- It is not recommended to use compressed dry air to clean the tool. If cleaning with compressed air is the only method available, always wear safety goggles or safety glasses with side shields when using compressed air to clean the tool. If the operation is dusty, also wear a dust mask.
- Do not at any time let brake fluids, gasoline, petroleum-based products, penetrating oils, etc., to come in contact with plastic parts. Chemicals can damage, weaken or destroy plastic which may result in serious personal injury.

**BATTERY PACK REMOVAL AND PREPARATION FOR RECYCLING**

To preserve natural resources, please recycle or dispose of batteries properly. This product contains lithium-ion batteries. Local, provincial, or federal laws may prohibit disposal of lithium-ion batteries in ordinary trash. Consult your local waste authority for information regarding available recycling and/or disposal options.

**WASTE DISPOSAL**

The product must not be discarded with normal household waste. It must be disposed of properly.

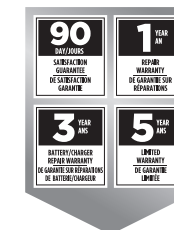
**WARNING!**

Upon removal of the battery pack for disposal or recycling, cover the battery pack's terminals with heavy-duty adhesive tape. Do not attempt to destroy or disassemble the battery pack or remove any of its components. Lithium-ion batteries must be recycled or disposed of properly. Also, never touch the terminals with metal objects and/or body parts as a short circuit may result. Keep away from children. Failure to comply with these warnings could result in fire and/or serious injury.

**5-YEAR LIMITED WARRANTY**

This MAXIMUM product is guaranteed for a period of 5 years from the date of original retail purchase against defects in workmanship and materials only and is subject to the following components:

- a) Component A: The carrying case is guaranteed for a period of 1-year from the date of original retail purchase against defects in workmanship and materials.
- b) Component B: Accessories, including drill bits and saw blades, do not carry a warranty.



Subject to the conditions and limitations described below, this product, if returned to us with proof of purchase within the stated warranty period and if covered under this warranty, will be repaired or replaced (with the same model, or one of equal value or specification), at the sole discretion of the Maximum Canada authorized repair centre ("Service Provider"). We will bear the cost of any repair or replacement and any costs of labour relating thereto.

**These warranties are subject to the following conditions and limitations:**

- a) a bill of sale verifying the purchase and purchase date must be provided;
- b) defects in workmanship and material to be assessed and determined by the Service Provider
- c) this warranty will not apply to any product or part thereof which is worn or broken or which has become inoperative due to abuse, misuse, accidental damage, neglect or lack of proper installation, operation or maintenance (as outlined in the applicable owner's manual or operating instructions);
- d) this warranty does not apply to normal wear and tear or to expendable parts or accessories (including drill bits and saw blades) that may be supplied with the product that by their nature have a limited life span and are expected to become inoperative or unusable after a reasonable period of use;
- e) this warranty will not apply to routine maintenance and consumable items such as, but not limited to, fuel, lubricants, vacuum bags, blades, belts, sandpaper, bits, fluids, rubber o-rings, tune-ups or adjustments;
- f) this warranty excludes the following components that may accompany your product:
  - (1) The carrying case, which is only for a period of 1-year from the date of original retail purchase against defects in workmanship and materials.
  - (2) Accessories, including drill bits and saw blades, which do not carry a warranty of any kind.
- g) this warranty will not apply where damage is caused by repairs made or attempted by anyone other than the Service Provider (i.e., persons not authorized by the manufacturer), and any such unauthorized repairs or attempted repairs shall void this warranty in its entirety;
- h) this warranty will not apply to any parts other than original parts, except to the extent that the retailer or manufacturer or persons authorized by either of them have repaired or replaced them;

- i) this warranty will not apply to any product that was sold to the original purchaser as a reconditioned or refurbished product (unless otherwise specified in writing);
- j) this warranty will not apply to any product or part thereof if any part from another manufacturer is installed therein or any repairs or alterations have been made or attempted by unauthorized persons;
- k) this warranty will not apply to normal deterioration of the exterior finish, such as, but not limited to, scratches, dents, paint chips, or to any corrosion or discolouring by heat, abrasive and chemical cleaners;
- l) this warranty will not apply to component parts sold by and identified as the product of another company, which shall be covered under that product manufacturer's warranty, if any;
- m) any products replaced by the retailer in attempt to fulfill warranty obligations is subject to the original product warranty conditions and related time period as initiated by the original date of purchase; if product is purchased in Quebec, the warranty term will be extended for a period equal to the time during which the Quebec retailer possesses the product in attempt to fulfill warranty obligations; replaced product will not default to new product warranty conditions; and
- n) The retailer and manufacturer's sole obligation and the purchaser's sole remedy under this warranty shall be as set out herein. The warranties contained herein are not transferable and are given only to the purchaser. FURTHER, THE WARRANTIES SET OUT HEREIN ARE IN LIEU OF ALL OTHER WARRANTIES OR CONDITIONS, WHETHER EXPRESS, IMPLIED OR STATUTORY (INCLUDING SUCH AS ARISE UNDER THE SALE OF GOODS ACT OR THE INTERNATIONAL SALE OF GOODS ACT), ARISING OUT OF A COURSE OF DEALING OR USAGE OF TRADE OR OTHERWISE, INCLUDING, SUBJECT TO APPLICABLE LAW, ANY IMPLIED WARRANTIES OR CONDITIONS OF MERCHANTABILITY, MERCHANTABLE QUALITY, FITNESS OR ADEQUACY FOR A PARTICULAR PURPOSE OR USE, AND ALL OTHER SUCH WARRANTIES ARE EXPRESSLY DISCLAIMED BY THE RETAILER AND MANUFACTURER.

### ADDITIONAL LIMITATIONS

This warranty applies only to the original purchaser and may not be transferred.

This warranty applies for a period of 5 years from the date of original retail purchase, as indicated on the bill of sale.

Neither the retailer, Maximum Canada, nor the manufacturer shall be liable for any other expense, loss or damage, including, without limitation, any indirect, incidental, consequential or exemplary damages arising in connection with the sale, use or inability to use this product.

Under no circumstances shall the retailer, Maximum Canada, or manufacturer be liable to the purchaser for any claim for (a) indirect, special, punitive, incidental, exemplary, or consequential damages, (b) compensation for loss of profits, anticipated revenue, savings or goodwill, or other economic loss of the purchaser, (c) exemplary, aggravated

or punitive damages howsoever incurred, (d) contribution or set-off in respect of any claims against the purchaser, (e) any damages whatsoever relating to third party products or services or the purchaser's materials, or (f) any damages whatsoever relating to interruption, delays, errors or omissions; in each case under any theory of law or equity, arising out of or in any way related to this warranty, even if advised of the possibility thereof. Notwithstanding any provision herein or entitlement of the purchaser at law, in equity or otherwise, in no event shall the liability of the retailer or manufacturer under this warranty, whether in contract, tort, product liability or otherwise, exceed, in the aggregate, the amount paid by the purchaser to the retailer for the product to which this warranty applies.

### NOTICE TO CONSUMER

This warranty gives you specific legal rights, and you may have other rights, which may vary from province to province. The provisions contained in this warranty are not intended to limit, modify, take away from, disclaim or exclude any statutory warranties set forth in any applicable provincial or federal legislation.

**In addition to the 5-Year Limited Warranty, this MAXIMUM product is covered by our:**

### 3-YEAR BATTERY/CHARGER REPAIR WARRANTY

Maximum Canada will repair or replace the batteries/chargers which have worn beyond reasonable use due to normal use of such items, for a period of three (3) years from the date of original purchase.

Any defects with such battery and/or charger will be subject to repair or replacement as determined by the Service Provider. For proper servicing, both the battery and charger will require diagnosis to evaluate warranty requirements and therefore must both be provided to the Service Provider at the time of service request.

**The following is excluded from this 3-Year Battery/Charger Repair Warranty:**

- a) Damages that are a result of abuse or misuse
- b) Any wear and tear that does not affect the core function of the product.

### 1-YEAR REPAIR WARRANTY

Maximum Canada will maintain this product and replace critical parts which have worn beyond reasonable use through normal use of such product, any time during the first year after purchase.

**The following are excluded from this 1-Year Repair Warranty:**

- a) Missing or damaged parts or components that are a result of abuse or misuse;
- b) Any wear and tear to non-critical parts or accessories that do not affect the core function of the product.



# 24

model no. 054-7989-8 | contact us 1-888-670-6682

## 90-DAY SATISFACTION GUARANTEE

If you are not completely satisfied with the performance of your MAXIMUM product for any reason, you can return it within 90 days from the date of purchase with proof of purchase for exchange or a full refund.

Made in China

Imported by MAXIMUM Canada Toronto, Canada M4S 2B8

WARRANTY

