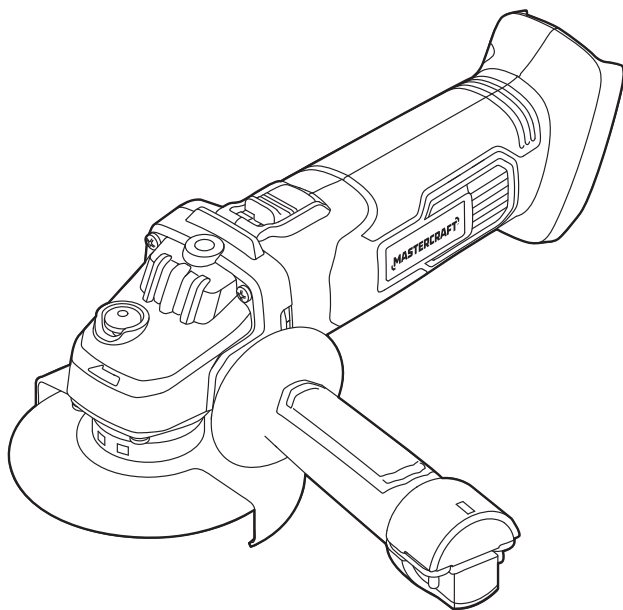


MASTERCRAFT™/MC

CORDLESS
4 1/2" (115 mm)
ANGLE GRINDER/CUT-OFF TOOL
054-7947-8



IMPORTANT:

Read and understand this instruction manual thoroughly before using the product.

**INSTRUCTION
MANUAL**

TABLE OF CONTENTS

Technical Specifications	4
Safety Guidelines	5
Key Parts Diagram	12
Operating Instructions	13
Maintenance	18
Troubleshooting	19
Parts List	20
Warranty	22

NOTE:

If any parts are missing or damaged, or if you have any questions, please call our toll-free helpline at 1-800-689-9928.



SAVE THESE INSTRUCTIONS

- This manual contains important safety and operating instructions. Read all instructions and follow them with use of this product.

TECHNICAL SPECIFICATIONS

Rated Voltage	20 V d.c.max*.
Rated Speed	8500 /min
Wheel Diameter	4 1/2" (115 mm)
Arbour Size	5/8" (16 mm)

*Maximum battery voltage without workload; with workload nominal voltage is 18V.

Recommend using tool with Mastercraft® and PWR POD™ 20V max* lithium-ion 4.0 Ah battery (054-7557-6 and 054-7564-8; sold separately) for optimal performance.

SAFETY GUIDELINES:



WARNING!

Safety symbols in this Instruction Manual are used to flag possible dangers. The safety symbols and their explanations require your full understanding. The safety warnings do not, by themselves, eliminate any danger, nor are they substitutes for proper accident prevention measures.



WARNING!

This Safety Alert Symbol indicates caution, warning, or danger. Failure to obey a safety warning can result in serious injury to yourself or others. To reduce the risk of injury, fire, or electric shock, always follow the safety precautions.

KNOW YOUR TOOL

To operate this tool, carefully read this Instruction Manual and all labels affixed to the cordless angle grinder before using. Keep this instruction manual available for future reference.

IMPORTANT

This tool should only be serviced by a qualified service technician. For more information, call the toll-free helpline at 1-800-689-9928.

READ ALL INSTRUCTIONS THOROUGHLY.

SAVE THESE INSTRUCTIONS.

GENERAL POWER TOOL SAFETY WARNINGS



WARNING!

Read all safety warnings, instructions, illustrations and specifications provided with this power tool. Failure to follow all instructions listed below may result in electric shock, fire and/or serious injury.

SAVE ALL WARNINGS AND INSTRUCTIONS FOR FUTURE REFERENCE.

The term “power tool” in the warnings refers to your mains-operated (corded) power tool or battery-operated (cordless) power tool.

WORK AREA SAFETY

- **Keep work area clean and well lit.** Cluttered or dark areas invite accidents.
- **Do not operate power tools in explosive atmospheres, such as in the presence of flammable liquids, gases or dust.** Power tools create sparks which may ignite the dust or fumes.
- **Keep children and bystanders away while operating a power tool.** Distractions can cause you to lose control.

ELECTRICAL SAFETY

- **Power tool plugs must match the outlet. Never modify the plug in any way. Do not use any adaptor plugs with earthed (grounded) power tools.** Unmodified plugs and matching outlets will reduce risk of electric shock.
- **Avoid body contact with earthed or grounded surfaces, such as pipes, radiators, ranges and refrigerators.** There is an increased risk of electric shock if your body is earthed or grounded.
- **Do not expose power tools to rain or wet conditions.** Water entering a power tool will increase the risk of electric shock.
- **Do not abuse the cord. Never use the cord for carrying, pulling or unplugging the power tool. Keep cord away from heat, oil, sharp edges or moving parts.** Damaged or entangled cords increase the risk of electric shock.
- **When operating a power tool outdoors, use an extension cord suitable for outdoor use.** Use of a cord suitable for outdoor use reduces the risk of electric shock.
- **If operating a power tool in a damp location is unavoidable, use a ground fault circuit interrupter (GFCI) protected supply.** Use of an GFCI reduces the risk of electric shock.

PERSONAL SAFETY

- **Stay alert, watch what you are doing and use common sense when operating a power tool. Do not use a power tool while you are tired or under the influence of drugs, alcohol or medication.** A moment of inattention while operating power tools may result in serious personal injury.
- **Use personal protective equipment. Always wear eye protection.** Protective equipment such as a dust mask, non-skid safety shoes, hard hat or hearing protection used for appropriate conditions will reduce personal injuries.
- **Prevent unintentional starting. Ensure the switch is in the off-position before connecting to power source and/or battery pack, picking up or carrying the tool.** Carrying power tools with your finger on the switch or energising power tools that have the switch on invites accidents.
- **Remove any adjusting key or wrench before turning the power tool on.** A wrench or a key left attached to a rotating part of the power tool may result in personal injury.
- **Do not overreach. Keep proper footing and balance at all times.** This enables better control of the power tool in unexpected situations.
- **Dress properly. Do not wear loose clothing or jewellery. Keep your hair and clothing away from moving parts.** Loose clothes, jewellery or long hair can be caught in moving parts.
- **If devices are provided for the connection of dust extraction and collection facilities, ensure these are connected and properly used.** Use of dust collection can reduce dust-related hazards.

POWER TOOL USE AND CARE

- **Do not force the power tool. Use the correct power tool for your application.** The correct power tool will do the job better and safer at the rate for which it was designed.
- **Do not use the power tool if the switch does not turn it on and off.** Any power tool that cannot be controlled with the switch is dangerous and must be repaired.
- **Disconnect the plug from the power source and/or remove the battery pack, if detachable, from the power tool before making any adjustments, changing accessories, or storing power tools.** Such preventive safety measures reduce the risk of starting the power tool accidentally.
- **Store idle power tools out of the reach of children and do not allow persons unfamiliar with the power tool or these instructions to operate the power tool.** Power tools are dangerous in the hands of untrained users.
- **Maintain power tools and accessories. Check for misalignment or binding of moving parts, breakage of parts and any other condition that may affect the power tool's operation. If damaged, have the power tool repaired before use.** Many accidents are caused by poorly maintained power tools.
- **Keep cutting tools sharp and clean.** Properly maintained cutting tools with sharp cutting edges are less likely to bind and are easier to control.
- **Use the power tool, accessories and tool bits etc. in accordance with these instructions, taking into account the working conditions and the work to be performed.** Use of the power tool for operations different from those intended could result in a hazardous situation.

BATTERY TOOL USE AND CARE

- **Recharge only with the charger specified by the manufacturer.** A charger that is suitable for one type of battery pack may create a risk of fire when used with another battery pack.
- **Use power tools only with specifically designated battery packs.** Use of any other battery packs may create a risk of injury and fire.
- **When battery pack is not in use, keep it away from other metal objects, like paper clips, coins, keys, nails, screws or other small metal objects, that can make a connection from one terminal to another.** Shorting the battery terminals together may cause burns or a fire.
- **Under abusive conditions, liquid may be ejected from the battery; avoid contact. If contact accidentally occurs, flush with water. If liquid contacts eyes, additionally seek medical help.** Liquid ejected from the battery may cause irritation or burns.

SERVICE

- **Have your power tool serviced by a qualified repair person using only identical replacement parts.** This will ensure that the safety of the power tool is maintained.

SAFETY INSTRUCTIONS FOR ALL OPERATIONS

SAFETY WARNINGS COMMON FOR GRINDING, CUTTING-OFF OPERATIONS

- **This power tool is intended to function as a grinder or cut-off tool. Read all safety warnings, instructions, illustrations and specifications provided with this power tool.** Failure to follow all instructions listed below may result in electric shock, fire and/or serious injury.
- **Operations such as sanding, wire brushing or polishing are not recommended to be performed with this power tool.** Operations for which the power tool was not designed may create a hazard and cause personal injury.
- **Do not use accessories which are not specifically designed and recommended by the tool manufacturer.** Just because the accessory can be attached to your power tool, it does not assure safe operation.
- **The rated speed of the accessory must be at least equal to the maximum speed marked on the power tool.** Accessories running faster than their rated speed can break and fly apart.
- **The outside diameter and the thickness of your accessory must be within the capacity rating of your power tool.** Incorrectly sized accessories cannot be adequately guarded or controlled.
- **The arbour size of wheels, flanges, backing pads or any other accessory must properly fit the spindle of the power tool.** Accessories with arbour holes that do not match the mounting hardware of the power tool will run out of balance, vibrate excessively and may cause loss of control.
- **Do not use a damaged accessory. Before each use inspect the accessory such as abrasive wheels for chips and cracks, backing pad for cracks, tear or excess wear, wire brush for loose or cracked wires. If power tool or accessory is dropped, inspect for damage or install an undamaged accessory. After inspecting and installing an accessory, position yourself and bystanders away from the plane of the rotating accessory and run the power tool at maximum no-load speed for one minute.** Damaged accessories will normally break apart during this test time.
- **Wear personal protective equipment. Depending on application, use face shield, safety goggles or safety glasses. As appropriate, wear dust mask, hearing protectors, gloves and workshop apron capable of stopping small abrasive or workpiece fragments.** The eye protection must be capable of stopping flying debris generated by various operations. The dust mask or respirator must be capable of filtering particles generated by your operation. Prolonged exposure to high intensity noise may cause hearing loss.
- **Keep bystanders a safe distance away from work area. Anyone entering the work area must wear personal protective equipment.** Fragments of workpiece or of a broken accessory may fly away and cause injury beyond immediate area of operation.
- **Hold the power tool by insulated gripping surfaces only when performing an operation where the cutting tool may contact hidden wiring.** Contact with a “live” wire will also make exposed metal parts of the power tool “live” and could give the operator an electric shock.
- **Never lay the power tool down until the accessory has come to a complete stop.** The spinning accessory may grab the surface and pull the power tool out of your control.

- **Do not run the power tool while carrying it at your side.** Accidental contact with the spinning accessory could snag your clothing, pulling the accessory into your body.
- **Regularly clean the power tool's air vents.** The motor's fan will draw the dust inside the housing and excessive accumulation of powdered metal may cause electrical hazards.
- **Do not operate the power tool near flammable materials.** Sparks could ignite these materials.
- **Do not use accessories that require liquid coolants.** Using water or other liquid may result in electrocution or shock.

FURTHER SAFETY INSTRUCTIONS FOR ALL OPERATIONS

KICKBACK AND RELATED WARNINGS

Kickback is a sudden reaction to a pinched or snagged rotating wheel, backing pad, brush or any other accessory. Pinching or snagging causes rapid stalling of the rotating accessory which in turn causes the uncontrolled power tool to be forced in the direction opposite of the accessory's rotation at the point of the binding.

For example, if an abrasive wheel is snagged or pinched by the workpiece, the edge of the wheel that is entering into the pinch point can dig into the surface of the material causing the wheel to climb out or kick out. The wheel may either jump toward or away from the operator, depending on direction of the wheel's movement at the point of pinching. Abrasive wheels may also break under these conditions.

Kickback is the result of power tool misuse and/or incorrect operating procedures or conditions and can be avoided by taking proper precautions as given below.

- **Maintain a firm grip on the power tool and position your body and arm to allow you to resist kickback forces. Always use auxiliary handle, if provided, for maximum control over kickback or torque reaction during start-up.** The operator can control torque reactions or kickback forces, if proper precautions are taken.
- **Never place your hand near the rotating accessory.** Accessory may kick back over your hand.
- **Do not position your body in the area where power tool will move if kickback occurs.** Kickback will propel the tool in direction opposite to the wheel's movement at the point of snagging.
- **Use special care when working corners, sharp edges, etc. Avoid bouncing and snagging the accessory.** Corners, sharp edges or bouncing have a tendency to snag the rotating accessory and cause loss of control or kickback.
- **Do not attach a saw chain woodcarving blade or toothed saw blade.** Such blades create frequent kickback and loss of control.

ADDITIONAL SAFETY INSTRUCTIONS FOR GRINDING AND CUTTING-OFF OPERATIONS

SAFETY WARNINGS SPECIFIC FOR GRINDING AND ABRASIVE CUTTING-OFF OPERATIONS

- **Use only wheel types that are recommended for your power tool and the specific guard designed for the selected wheel.** Wheels for which the power tool was not designed cannot be adequately guarded and are unsafe.
- **The grinding surface of centre depressed wheels must be mounted below the plane of the guard lip.** An improperly mounted wheel that projects through the plane of the guard lip cannot be adequately protected.
- **The guard must be securely attached to the power tool and positioned for maximum safety, so the least amount of wheel is exposed towards the operator.** The guard helps to protect the operator from broken wheel fragments, accidental contact with wheel, and sparks that could ignite clothing.
- **Wheels must be used only for recommended applications. For example: do not grind with the side of cut-off wheel.** Abrasive cut-off wheels are intended for peripheral grinding; side forces applied to these wheels may cause them to shatter.
- **Always use undamaged wheel flanges that are of correct size and shape for your selected wheel.** Proper wheel flanges support the wheel thus reducing the possibility of wheel breakage. Flanges for cut-off wheels may be different from grinding wheel flanges.
- **Do not use worn down wheels from larger power tools.** Wheel intended for larger power tool is not suitable for the high speed of a smaller tool and may burst.

ADDITIONAL SAFETY INSTRUCTIONS FOR CUTTING-OFF OPERATIONS

ADDITIONAL SAFETY WARNINGS SPECIFIC FOR ABRASIVE CUTTING-OFF OPERATIONS

- **Do not “jam” the cut-off wheel or apply excessive pressure. Do not attempt to make an excessive depth of cut.** Overstressing the wheel increases the loading and susceptibility to twisting or binding of the wheel in the cut and the possibility of kickback or wheel breakage.
- **Do not position your body in line with and behind the rotating wheel.** When the wheel, at the point of operation, is moving away from your body, the possible kick back may propel the spinning wheel and the power tool directly at you.
- **When wheel is binding or when interrupting a cut for any reason, switch off the power tool and hold the power tool motionless until the wheel comes to a complete stop. Never attempt to remove the cut-off wheel from the cut while the wheel is in motion otherwise kickback may occur.** Investigate and take corrective action to eliminate the cause of wheel binding.
- **Do not restart the cutting operation in the workpiece. Let the wheel reach full speed and carefully re-enter the cut.** The wheel may bind, walk up or kick back if the power tool is restarted in the workpiece.
- **Support panels or any oversized workpiece to minimize the risk of wheel pinching and kickback.** Large workpieces tend to sag under their own weight. Supports must be placed under the workpiece near the line of cut and near the edge of the workpiece on both sides of the wheel.

- **Use extra caution when making a “pocket cut” into existing walls or other blind areas.** The protruding wheel may cut gas or water pipes, electrical wiring or objects that can cause kickback.

ADDITIONAL SAFETY GUIDELINES FOR CORDLESS ANGLE GRINDER

- **The label on your tool may include the following symbols. The symbols and their definitions are as follows:**

V Volts

A Amperes

Hz Hertz

W Watts

min Minutes

~ Alternating current

Ø Diameter

mm Millimetre

— or d.c. Direct current

n Rated speed



..... Class II Construction

.../min or ...min⁻¹ Revolutions or reciprocations per minute



..... Grounding terminal



..... WARNING – To reduce the risk of injury, user must read instruction manual.



..... WARNING – To reduce the risk of injury, always wear eye protection.



..... WARNING – To reduce the risk of injury, always wear ear protection.



WARNING!

To reduce the risk of electric shock or damage to the charger and battery, use only the Mastercraft® and PWR POD™ batteries and chargers listed.

BATTERY PACK

Mastercraft® : 054-3124-0, 054-7553-4, 054-7557-6,
054-2434-8

PWR POD™ : 054-7563-0, 054-7564-8, 054-7558-4

CHARGER

Mastercraft® : 054-3126-6, 054-7559-2,
054-8299-4

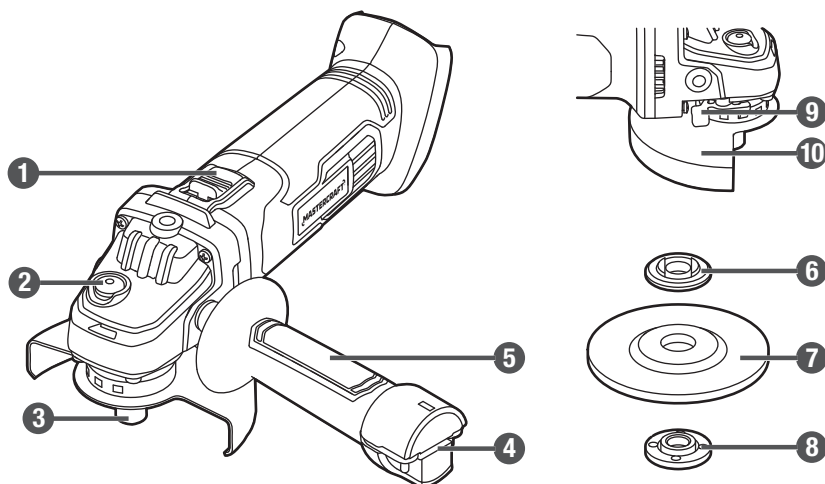
PWR POD™ : 054-3126-6, 054-7565-6,
054-7567-2

- **For best results, your battery tool should be stored and used in a location where the temperature is more than 41°F (5°C) but less than 104°F (40°C).** Do not store outside or in vehicles.

model no. 054-7947-8 | contact us 1-800-689-9928

PACKAGE CONTENTS:

Cordless angle grinder, 4 1/2" (115 mm) grinding wheel, 4 1/2" (115 mm) grinding guard, 4 1/2" (115 mm) cutting guard, auxiliary handle, wrench (installed in the auxiliary handle), and instruction manual.



KEY PARTS DIAGRAM

No.	Description
1	Switch button
2	Spindle-lock button
3	Spindle
4	Wrench
5	Auxiliary handle

No.	Description
6	Inner flange
7	Grinding wheel
8	Outer flange
9	Guard-adjusting lever
10	Grinding guard

Before attempting to use this tool, become familiar with all of its operating features and safety requirements. For optimum performance and safety, read the following operating instructions carefully before using.



WARNING!

- Remove the cordless angle grinder from the package and examine it carefully. Do not discard the carton or any packaging material until all parts have been examined.
- If any part of the angle grinder is missing or damaged, do not attach the battery pack to the tool or use the tool until the part has been repaired or replaced. Failure to heed this warning could result in serious injury.
- Do not allow familiarity with the cordless angle grinder to cause a lack of alertness. A fraction of a second of carelessness is enough to cause severe injury.

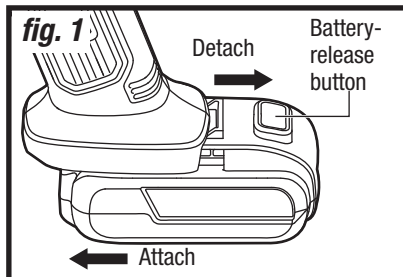
OPERATING INSTRUCTIONS

ATTACH THE BATTERY PACK (fig. 1)

1. Make sure that the angle grinder is turned off.
2. Align the raised rib on the battery pack with the grooves on the bottom of the tool, and then attach the battery pack to the angle grinder.

DETACH THE BATTERY PACK (fig. 1)

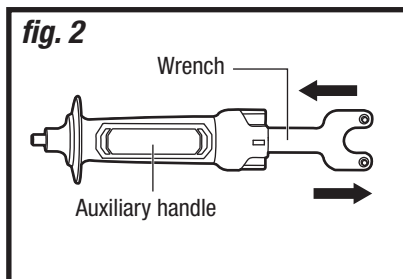
1. Make sure that the angle grinder is turned off.
2. Depress the battery-release button located on the front of the battery pack to release the battery pack.
3. Pull the battery pack forward to remove it from the tool.



INSTALL/REMOVE THE WRENCH (fig. 2)

The auxiliary handle contains a slot for convenient storage of the wrench.

1. To install the wrench into the auxiliary handle, just insert the wrench into the slot as far as possible.
2. To remove the wrench from the auxiliary handle, just pull it out.



NOTICE: When attaching the battery pack to the tool, make sure that the raised platform on the pack aligns with the grooves on the bottom of the tool and that the latches snap properly into place. Improper assembly of the battery pack can cause damage to internal components.



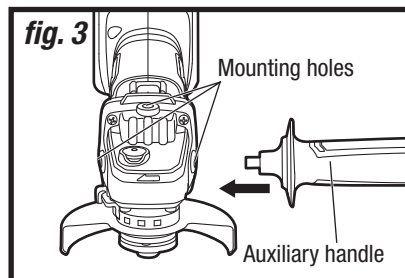
WARNING!

- To avoid the possibility of accidental starting, always take care not to activate the switch when you are attaching the battery pack or performing other adjustments to the tool.

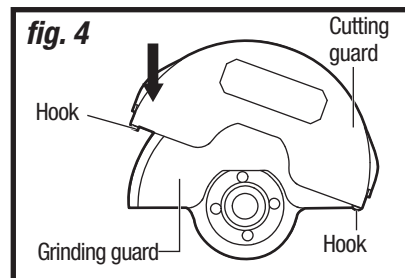
INSTALL/REMOVE THE AUXILIARY HANDLE (fig. 3)

Use the auxiliary handle for safe control and ease of operation.

1. Remove the battery pack from the angle grinder.
2. Insert the auxiliary handle into the mounting holes on the tool, and then turn the auxiliary handle clockwise to securely tighten it in place. The auxiliary handle may be installed on the right side, left side, or top of the tool.
3. Simply turn the auxiliary handle counter-clockwise to remove the auxiliary handle.

**INSTALL/REMOVE THE CUTTING GUARD (fig. 4)**

1. Remove the battery pack from the angle grinder.
2. Use the cutting guard to cover the grinding guard: position one hook of the cutting guard to engage the grinding guard, and then push the cutting guard until the other hook fully engages with the grinding guard.
3. To remove the cutting guard, use your finger to detach one hook from the grinding guard, and then the cutting guard can be pulled out easily.



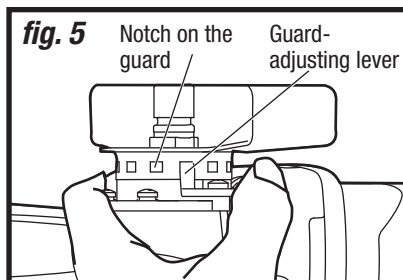
NOTICE: If you can't remove the cutting guard by your finger, use a flat-head screwdriver to detach the hook from the grinding guard.

**WARNING!**

- For cutting-off applications, always work with the cutting guard installed to protect yourself from serious injury.
- Never use your grinder with the guard removed. It has been designed for use only with the guard attached. Attempting to use the grinder with the guard removed will result in loose particles being thrown against the operator and possibly serious personal injury.
- Only use the grinding guard with grinding wheels. Make sure that the guard-adjusting lever secures the grinding guard before operation. Keep the grinding guard between you and wheel. Do not direct the grinding guard opening towards your body.

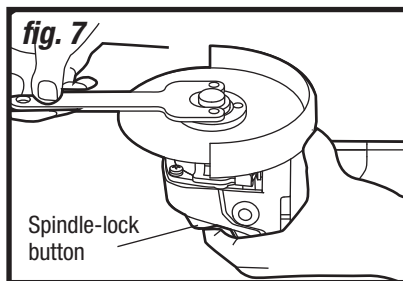
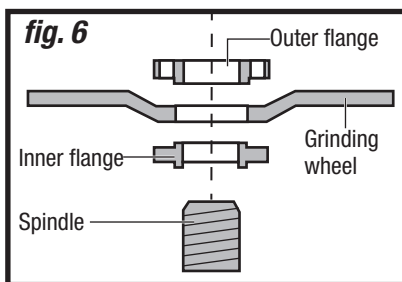
ADJUST THE GRINDING/CUTTING GUARD (fig. 5)

1. Remove the battery pack from the angle grinder.
2. Press the guard-adjusting lever and hold it to loosen the guard.
3. Rotate the guard to the desired position and make sure that the lever lines up with the notch on the guard.
4. Release the guard-adjusting lever to lock the guard; verify that the lever secures the guard.



MOUNT THE GRINDING WHEEL (fig. 6-7)

1. Remove the battery pack from the angle grinder.
2. Make sure that the grinding guard is securely in place. Depress the spindle-lock button. Loosen the outer flange with the supplied wrench while holding the spindle-lock button down (fig. 7).
3. Place the inner flange on the spindle; make sure that the inner flange is positioned so that the shape of the opening in the flange corresponds with the shape at the base of the spindle.
4. Place the grinding wheel on the spindle.
5. Thread the outer flange on the spindle with the flat side of the flange facing up, making sure that the opening in the grinding wheel is positioned around the raised portion of the outer flange (fig. 6).
6. Press the spindle-lock button to prevent movement of the spindle.
7. Keep the spindle-lock button depressed; tighten the threaded outer flange by turning it clockwise with the wrench (fig. 7).

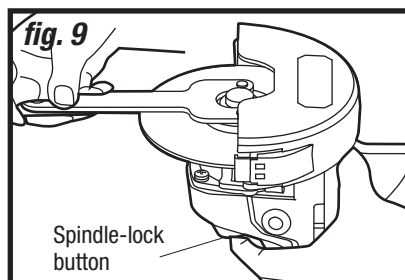
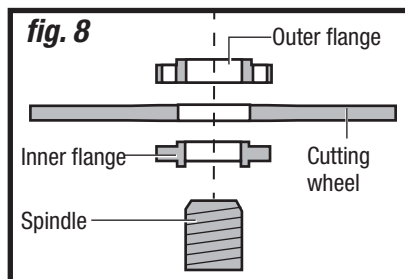


WARNING!

- Never use a grinding wheel with a rated speed lower than the speed shown on the grinder nameplate.
- Use only Type 27 grinding wheels with the diameter of 4 1/2" (115 mm) and thickness of 1/4" (6 mm), such as the one provided with this product.

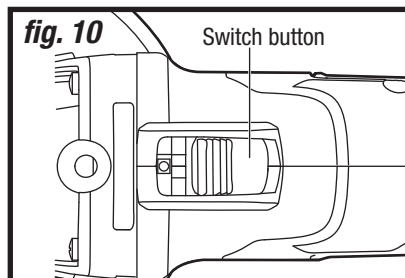
MOUNT THE CUTTING WHEEL (NOT INCLUDED) (fig. 8-9)

1. Remove the battery pack from the angle grinder.
2. Make sure that the grinding guard is securely in place. Depress the spindle-lock button. Loosen the outer flange with the supplied wrench while holding the spindle lock button down (fig. 9).
3. Place the inner flange on the spindle; make sure that the inner flange is positioned so that the shape of the opening in the flange corresponds with the shape at the base of the spindle.
4. Place the cutting wheel on the spindle.
5. The outer flange should be turned to the opposite direction to make the flat side of the outer flange contact the cutting wheel (fig. 8).
6. Press the spindle-lock button to prevent movement of the spindle.
7. Keep the spindle-lock button depressed; tighten the threaded outer flange by turning it clockwise with the wrench (fig. 9).

**ON/OFF SWITCH (fig. 10)**

The tool is switched "ON" with the switch button located at the top of the motor housing. The switch can be locked in the "ON" position, a convenience for long grinding operations. The symbol "O" on the motor housing indicates OFF; the symbol "I" indicates ON.

1. To turn the tool ON without locking it, slide the switch button forward by applying pressure only at the rear portion of the button.
2. To unlock the switch and turn the tool OFF, press and release the rear portion of the switch button; it will return to the OFF position automatically.

**WARNING!**

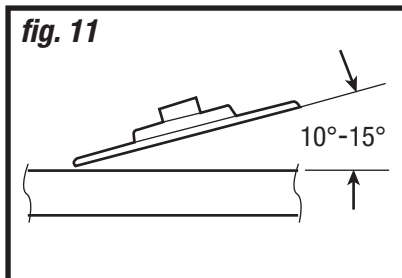
- Never use a cutting wheel with a rated speed lower than the speed shown on the grinder nameplate.
- Use only Type 41 cutting wheels.

FOR CONTINUOUS OPERATION

1. Push the switch button forward to the ON position and press the front of the button down until the switch clicks into position.
2. To unlock the switch and turn the tool OFF, press the rear of the button.

GRINDING (fig. 11)

Efficient grinding is achieved by controlling the pressure and keeping the angle between wheel and workpiece at 10° to 15° . If the wheel is too flat, the tool is difficult to control. If the angle is too steep, the pressure is concentrated on a small area causing burning to the work surface.



CUTTING

Using the cutting guard, it is possible to perform limited cutting on small stock such as concrete, metal tubes, piping or rebar.

When cutting, work with moderate feed, adapted to the material being cut. Do not exert side pressure onto the cutting wheel, tilt or oscillate the tool. When cutting profiles and square bar, it is best to start at the smallest cross section.

Always follow precautions for kickback. Do not apply side pressure to cutting wheel to reduce wheel speed. The tool should always be used so that sparks are directed away from user.

NOTICE: For cutting, always work with the cutting guard.



WARNING!

- Firmly grasp the body of the tool and the auxiliary handle before starting.
- Sparks are generated when grinding metal. Take care that no combustible material is present or can come in contact with the flying sparks.

MAINTENANCE

BEFORE EACH USE:

1. Inspect the angle grinder, the ON/OFF switch and the accessories for damage.
2. Check for damaged, missing, or worn parts.
3. Check for loose screws, misalignment or binding of moving parts, or any other condition that may affect the operation.
4. If abnormal vibration or noise occurs, turn the tool off immediately and have the problem corrected before further use.

CLEANING

Ventilation openings and switch button must be kept clean and free of foreign matter. Do not attempt to clean by inserting pointed objects through openings.



WARNING!

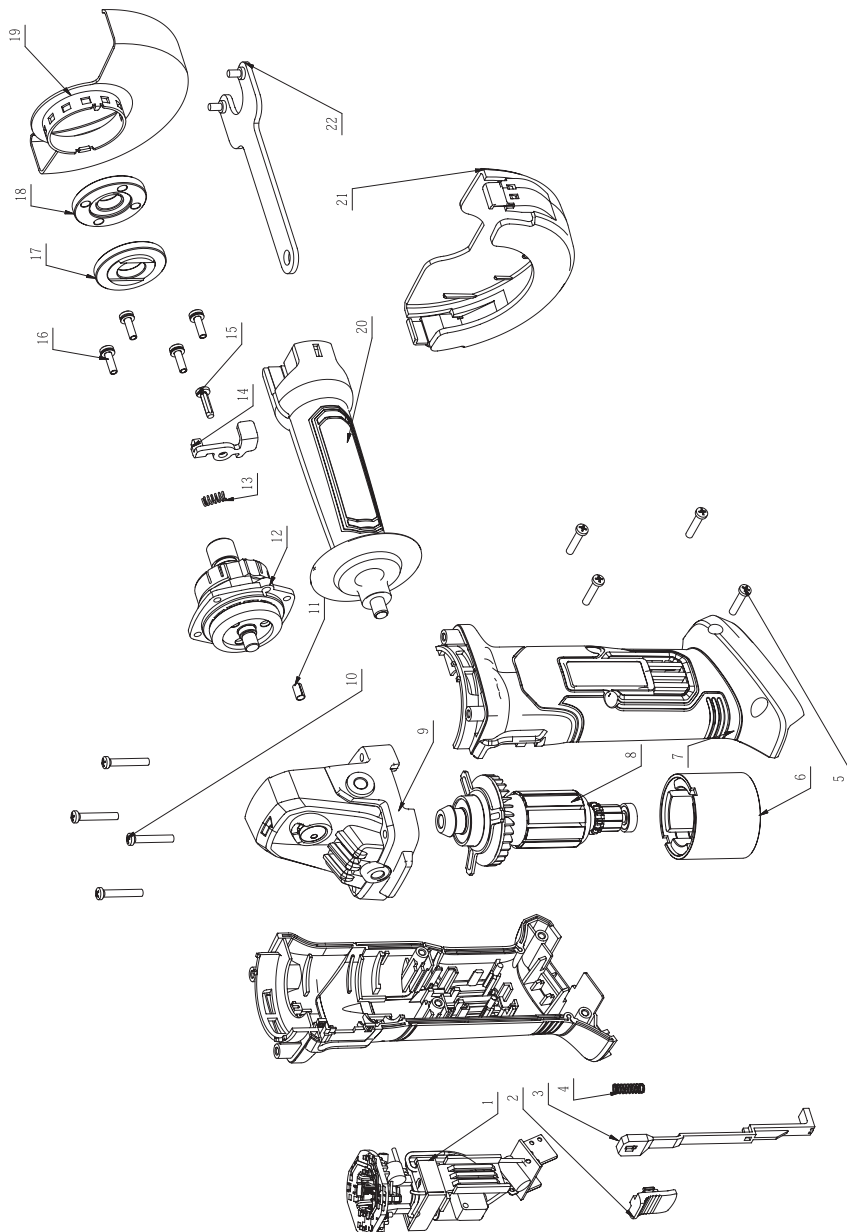
- Do not let brake fluids, gasoline, petroleum-based products, penetrating oil, etc., come into contact with plastic parts. These substances contain chemicals that can damage, weaken, or destroy plastic.
- When servicing, use only identical replacement parts. The use of any other parts may create a hazard or cause damage to the product.
- Use only accessories that are recommended for this cordless angle grinder by the manufacturer. Accessories that may be suitable for one tool may become hazardous when used with another tool.
- To ensure safety and reliability, all repairs should be performed by a qualified service technician.
- To avoid accidents, always remove the battery pack from the cordless angle grinder before cleaning or performing any maintenance. The tool may be cleaned most effectively with compressed dry air. Always wear safety goggles when cleaning tools with compressed air.

TROUBLESHOOTING

Problem	Possible Causes	Solution
The angle grinder does not work.	Battery is depleted.	Charge the battery pack.
	The switch is locked in the "ON" position when attaching the battery pack.	Turn off the angle grinder first and restart the tool.
	The battery is overheated.	Cool the battery and restart the tool again.
	The battery is overloaded.	Decrease the load on the tool and restart the tool again.
Grinding is too slow.	The grinding wheel is worn out.	Replace the grinding wheel on the tool.
Run time is too short.	Small capacity battery was used.	Use Mastercraft® 4.0 Ah battery (054-7557-6).

If the problem remains unsolved after performing the checks described above, call the toll-free helpline at 1-800-689-9928.

EXPLODED VIEW



No.	Part No.	Description
1	2830018000	Electric Assembly
2	3124057000	Switch Button
3	3127146000	Switch Actuator
4	3660057000	Spring
5	5610106000	Tapping Screw
6	2740343000	Stator
7	3900198000	L/R Housing Set
8	2826029000	Rotor Assembly
9	2826619000	Gear Case Assembly
10	5610034000	Tapping Screw
11	3705573000	Bush

No.	Part No.	Description
12	2826620000	Spindle Assembly
13	3660345000	Compression Spring
14	3705795000	Lever
15	5610094000	Thread Forming Screw
16	5620419000	Screw with Washer
17	3550328000	Inner Flange
18	3550130000	Outer Flange
19	3705072000	Guard
20	2826687000	Auxiliary Handle Assembly
21	2826707000	Guard Assembly
22	3700567000	Wrench

If any parts are missing or damaged, or if you have any questions, please call the toll-free helpline at 1-800-689-9928.

This Mastercraft® product is guaranteed for a period of **3 years from the date of original retail purchase** against defects in workmanship and materials, except for the following components:

- a) Component A: Batteries, chargers and carrying case, which are guaranteed for a period of 2 years from the date of original retail purchase against defects in workmanship and materials;
- b) Component B: Accessories, which are guaranteed for a period of 1 year from the date of original retail purchase against defects in workmanship and materials.

Subject to the conditions and limitations described below, this product, if returned to us with proof of purchase within the stated warranty period and if covered under this warranty, will be repaired or replaced (with the same model, or one of equal value or specification), at our option. We will bear the cost of any repair or replacement and any costs of labour relating thereto.

These warranties are subject to the following conditions and limitations:

- a) a bill of sale verifying the purchase and purchase date must be provided;
- b) this warranty will not apply to any product or part thereof which is worn or broken or which has become inoperative due to abuse, misuse, accidental damage, neglect or lack of proper installation, operation or maintenance (as outlined in the applicable owner's manual or operating instructions) or which is being used for industrial, professional, commercial or rental purposes;
- c) this warranty will not apply to normal wear and tear or to expendable parts or accessories that may be supplied with the product that are expected to become inoperative or unusable after a reasonable period of use;
- d) this warranty will not apply to routine maintenance and consumable items such as, but not limited to, fuel, lubricants, vacuum bags, blades, belts, sandpaper, bits, fluids, tune-ups or adjustments;
- e) this warranty will not apply where damage is caused by repairs made or attempted by others (i.e., persons not authorized by the manufacturer);
- f) this warranty will not apply to any product that was sold to the original purchaser as a reconditioned or refurbished product (unless otherwise specified in writing);
- g) this warranty will not apply to any product or part thereof if any part from another manufacturer is installed therein or any repairs or alterations have been made or attempted by unauthorized persons;
- h) this warranty will not apply to normal deterioration of the exterior finish, such as, but not limited to, scratches, dents, paint chips, or to any corrosion or discolouring by heat, abrasive and chemical cleaners; and
- i) this warranty will not apply to component parts sold by and identified as the product of another company, which shall be covered under the product manufacturer's warranty, if any.

Additional Limitations

This warranty applies only to the original purchaser and may not be transferred. Neither the retailer nor the manufacturer shall be liable for any other expense, loss or damage, including, without limitation, any indirect, incidental, consequential or exemplary damages arising in connection with the sale, use or inability to use this product.

Notice to Consumer

This warranty gives you specific legal rights, and you may have other rights, which may vary from province to province. The provisions contained in this warranty are not intended to limit, modify, take away from, disclaim or exclude any statutory warranties set forth in any applicable provincial or federal legislation.

Made in China

Imported by

Mastercraft Canada Toronto, Canada M4S 2B8

