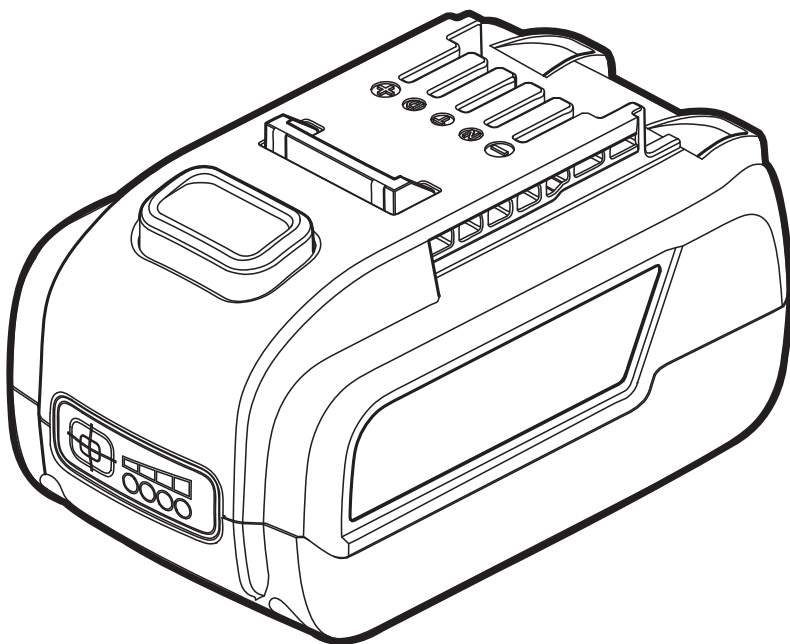


MASTERCRAFT™/MC

BATTERY

054-7557-6



IMPORTANT:

Read and understand this instruction manual thoroughly before using the product.

INSTRUCTION MANUAL

TABLE OF CONTENTS

Technical Specifications	4
Safety Guidelines	5
Key Parts Diagram	8
Operating Instructions	9
Maintenance	11
Part List	13
Warranty	14

NOTE:

If any parts are missing or damaged, or if you have any questions, please call our toll-free helpline at 1-800-689-9928.



SAVE THESE INSTRUCTIONS

- This manual contains important safety and operating instructions. Read all instructions and follow them with use of this product.

TECHNICAL SPECIFICATIONS

Battery Type	Lithium-ion
Battery Pack Voltage	20V max* DC
Capacity	4.0 Ah
Charge Time	70 minutes charging with 054-7559-2 145 minutes charging with 054-3126-6
Battery Pack Weight	1 lb 8 oz (0.68 kg)
Battery Charger	054-7559-2 (sold separately) 054-3126-6 (sold separately)

*Maximum battery voltage without workload; with workload, nominal voltage is 18V.

SAFETY GUIDELINES:

KNOW YOUR TOOL

To operate this tool, carefully read this Instruction Manual and all labels affixed to the battery pack before using. Keep this Instruction Manual available for future reference.

IMPORTANT

This tool should only be serviced by a qualified service technician. For more information, call the toll-free helpline at 1-800-689-9928.

READ ALL INSTRUCTIONS THOROUGHLY

SAFETY GUIDELINES FOR POWER TOOLS



WARNING!

Read all safety warnings and all instructions. Failure to follow all warnings and instructions may result in electric shock, fire and/or serious injury.

SAVE ALL WARNINGS AND INSTRUCTIONS FOR FUTURE REFERENCE.

The term “power tool” in the warnings refers to your mains operated (corded) power tool or battery operated (cordless) power tool.

WORK AREA SAFETY

- **Keep the work area clean and well lit.** Cluttered or dark areas invite accidents.
- **Do not operate power tools in explosive atmospheres, such as in the presence of flammable liquids, gases or dust.** Power tools create sparks which may ignite the dust or fumes.
- **Keep children and bystanders away while operating a power tool.** Distractions can cause you to lose control.

ELECTRICAL SAFETY

- **Avoid body contact with earthed or grounded surfaces, such as pipes, radiators, ranges and refrigerators.** There is an increased risk of electric shock if your body is earthed or grounded.
- **Do not expose power tools to rain or wet conditions.** Water entering a power tool will increase the risk of electric shock.

BATTERY TOOL USE AND CARE

- **Recharge only with the charger specified by the manufacturer.** A charger that is suitable for one type of battery pack may create a risk of fire when used with another battery pack.

- **Use power tools only with specifically designated battery packs.** Use of any other battery packs may create a risk of injury and fire.
- **When the battery pack is not in use, keep it away from other metal objects, like paper clips, coins, keys, nails, screws or other small metal objects that can make a connection from one terminal to another.** Shorting the battery terminals together may cause burns or a fire.
- **Under abusive conditions, liquid may be ejected from the battery; avoid contact.** If contact accidentally occurs, flush with water. If liquid contacts eyes, also seek medical help. Liquid ejected from the battery may cause irritation or burns.

SERVICE

- **Have your battery pack serviced by a qualified repair person using only identical replacement parts.** This will ensure that the safety of the power tool is maintained.

SPECIFIC SAFETY GUIDELINES FOR BATTERY PACK

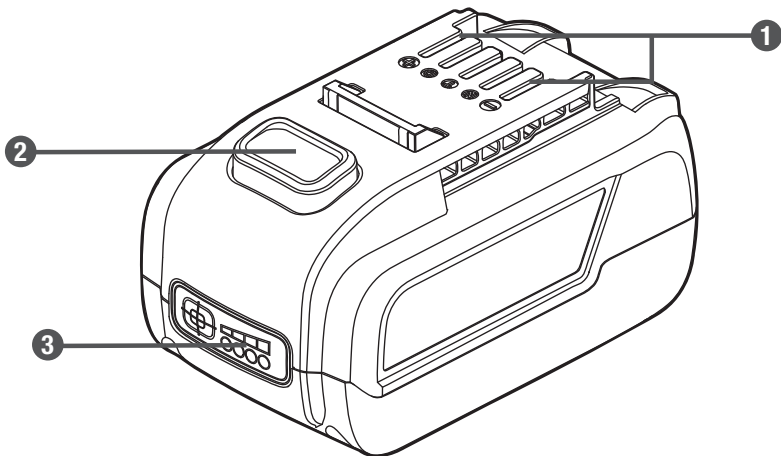
- **Use this battery pack only with the Mastercraft® chargers listed.**

BATTERY PACK	CHARGER
054-7557-6	054-7559-2, 054-3126-6

- **Know your power tool.** Read the Instruction Manual carefully. Learn the tool's applications and limitations, as well as the specific potential hazards related to this tool. Following this rule will reduce the risk of electric shock, fire, or serious injury.
- **Do not expose a battery pack to fire or excessive temperature.** Exposure to fire or temperature above 130°C (265°F) may cause explosion.
- **Do not use a battery pack that is damaged or modified.** Damaged or modified batteries may exhibit unpredictable behavior resulting in fire, explosion or risk of injury.
- **Batteries vent hydrogen gas and can explode in the presence of a source of ignition, such as a pilot light.** To reduce the risk of serious personal injury, never use any cordless product in the presence of an open flame. An exploded battery can propel debris and chemicals. If exposed, flush with water immediately.
- **Do not charge the battery pack in a damp or wet location.** Following this rule will reduce the risk of electric shock.
- **For best results, your battery pack should be charged, used and stored in a location where the temperature is more than 5°C (41°F) but less than 40°C (104°F).** Do not store the battery pack outside or in vehicles.
- **Follow all charging instructions and do not charge the battery pack outside of the temperature range specified in the instructions.** Charging improperly or at temperatures outside of the specified range may damage the battery and increase the risk of fire.

- **Under extreme usage or temperature conditions, battery leakage may occur.** If liquid comes in contact with your skin, wash immediately with soap and water, then neutralize with lemon juice or vinegar. If liquid gets in your eyes, flush them with clean water for at least 10 minutes, and then seek immediate medical attention. Following this rule will reduce the risk of serious personal injury.
- **Do not let gasoline, oils, petroleum-based products, etc., come in contact with plastic parts.** They contain chemicals that can damage, weaken or destroy plastic.
- **Have your battery pack serviced by a qualified repair person using only identical replacement parts.** This will ensure that the safety of the battery pack is maintained.
- **Save these instructions.** Refer to them frequently and use them to instruct others who may use this tool. If you lend someone this tool, lend them these instructions also to prevent misuse of the product and possible injury.

KEY PARTS DIAGRAM



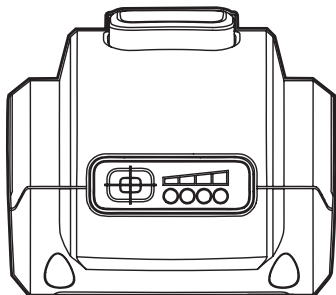
No.	Description
1	Electrical Contacts
2	Battery-release Button

No.	Description
3	Fuel Gauge

Before using this product, familiarize yourself with all operating features and safety rules.

OPERATING INSTRUCTIONS

FUEL GAUGE



● ● ● ●	80-100% Charge
● ● ● ○	60-80% Charge
● ● ○ ○	40-60% Charge
● ○ ○ ○	20-40% Charge
⚡ ○ ○ ○	Under 20% Charge
⚡ ⚡ ⚡ ⚡	Completely Discharged

This lithium-ion battery pack is equipped with a fuel gauge, which displays the remaining charge of the battery pack. Press the fuel gauge button to display the LED lights. The LED lights will stay lit for approximately 4 seconds.

LOW CAPACITY WARNING

If one LED on the fuel gauge begins to flash, the battery pack charge is under 20% capacity and should be recharged.

Unlike other battery types, lithium-ion batteries deliver fade-free power for their entire run time. The tool will not experience a slow, gradual loss of power as you work. To signal that the battery pack is at the end of its run time and needs to be charged, power to the tool will drop quickly. The fuel gauge will begin to display four flashing LED lights when it is completely discharged. When this happens, remove the tool from the workpiece, remove the battery pack and charge the battery pack as needed.

BATTERY PROTECTION

To protect the battery pack from damage and prolong its life, the battery pack circuitry will turn off the battery pack if it becomes overloaded or if the temperature becomes too high during use. This may happen in extremely high torque, binding and stalling situations. The battery pack will begin normal operation after it has cooled down.

The fuel gauge will display four flashing LED lights if the circuitry detects a momentary overload. You can conveniently reset the battery pack by releasing the power tool trigger switch. Press the fuel gauge button again to display the remaining charge.

NOTE:

- This lithium-ion battery pack is shipped partially charged. Before using it the first time, fully charge the battery pack.
- The fuel gauge can be used when the battery pack is attached to or when it has been removed from the tool.
- If the fuel gauge continues to flash four LED lights after it is reset, place the battery pack on the charger to evaluate the battery pack condition.
- A significantly reduced run time after fully charging the battery pack indicates that the battery pack is near the end of its usable life and should be replaced.

COLD WEATHER OPERATION

When the battery pack is very cold, it may “pulse” for the first minute of use to warm itself. Put the battery pack on a tool and use the tool in a light application. After about a minute, the battery pack will have warmed itself and will operate normally.

WHEN TO CHARGE THE BATTERY PACK

The lithium-ion battery pack can be charged at any time and will not develop a “memory” when charged after only a partial discharge. It is not necessary to run down the battery pack charge before recharging. Remove the battery pack from the tool when it is convenient for you and your job.

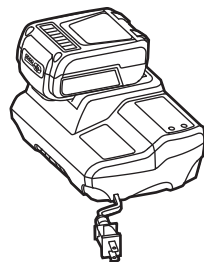
1. Use the fuel gauge to determine when you need to recharge the battery pack.
2. You can “top-off” your battery pack charge before starting a big job or long period of use.
3. Due to lithium-ion’s fade-free properties, the only time it is necessary to charge the lithium-ion battery pack is when the pack has reached the end of its charge. To signal the end of charge, power to the tool will drop quickly. Charge the battery pack as needed.

HOW TO CHARGE THE BATTERY PACK

A fully discharged battery pack will charge in about 70 minutes while charging with Mastercraft® Charger 054-7559-2, in a surrounding temperature between 5°C (41°F) and 40°C (104°F).

1. Charge the lithium-ion battery pack with the correct charger (Mastercraft® 054-7559-2, 054-3126-6).
2. Connect the charger to a power supply.
3. Attach the battery pack to the charger by aligning the raised ribs of the battery pack with the slot in the charger. Slide the battery pack onto the charger (fig 1).
4. The charger will communicate with the battery pack circuitry to evaluate the condition of the battery pack.
5. The fuel gauge LED lights will cycle from right to left during charging. This is part of the normal charging operation.
6. After charging is complete, the green LED on the charger will be on and the fuel gauge LED lights will turn off.
7. The battery pack will fully charge, but will not overcharge, if left on the charger.

fig 1



MAINTENANCE

BATTERIES:

The battery pack is equipped with lithium-ion rechargeable batteries. The duration of use from each charge will depend on the type of work performed.

This battery pack has been designed to provide maximum trouble-free life. Like all batteries, they will eventually wear out.

- To obtain the longest possible battery life, read and understand the Instruction Manual.
- It is good practice to unplug the charger and remove the lithium-ion battery pack when not in use.

FOR LITHIUM-ION BATTERY PACK STORAGE LONGER THAN 30 DAYS:

- Store lithium-ion battery packs in a 30%–50% charged condition.
- Every six months of storage, fully charge the lithium-ion battery pack.
- Exterior may be cleaned with a cloth or soft non-metallic brush.



WARNING!

- Do not disassemble the battery pack or attempt to replace the batteries. Handling of the batteries, especially when wearing rings and jewellery could result in a serious burn.
- To ensure safety and reliability, all repairs should be performed by a qualified service technician.
- When servicing, use only identical replacement parts. The use of any other parts may create a hazard or cause damage to the product.
- To avoid serious personal injury, always remove the battery pack from the tool when cleaning or performing any maintenance.
- Always wear safety goggles or safety glasses with side shields when using compressed air to clean the tool. If the operation is dusty, also wear a dust mask.

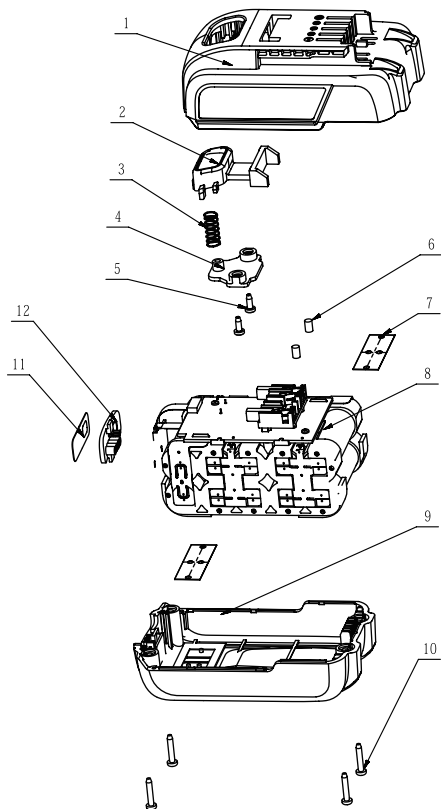
BATTERY PACK REMOVAL AND PREPARATION FOR RECYCLING

To preserve natural resources, please recycle or dispose of batteries properly. This product contains lithium-ion batteries. Provincial or municipal laws may prohibit disposal of lithium-ion batteries in ordinary trash. Consult your local waste authority for information regarding available recycling and/or disposal options.

**WARNING!**

- Upon removal of the battery pack for disposal or recycling, cover the battery pack's terminals with heavy-duty adhesive tape. Do not attempt to destroy or disassemble the battery pack or remove any of its components. Lithium-ion batteries must be recycled or disposed of properly. Also, never touch both terminals with metal objects and/or body parts, as short circuit may result. Keep away from children. Failure to comply with these warnings could result in fire and/or serious injury.

EXPLODED VIEW



PARTS LIST

No.	Part No.	Description
01	3126521000	Power Pack Cover
02	3126467000	Push Button
03	3660522000	Compression Spring
04	3126204000	Plate
05	5610010000	Tapping Screw
06	3121038000	Rubber Stick

No.	Part No.	Description
07	3704001000	Dust Cover
08	2770262000	Battery Assembly
09	3126524000	Power Pack Housing
10	5610274000	Self-tapping Screw
11	4870487000	Film Switch
12	3126468000	Power Indicator Cover

If any parts are missing or damaged, or if you have any questions, please call the toll-free helpline at 1-800-689-9928.

This Mastercraft product is guaranteed **two (2) years from the date of original retail purchase** against defects in materials and workmanship.

Subject to the conditions and limitations described below, this product, if returned to us with proof of purchase within the stated warranty period, and if covered under this warranty, will be repaired or replaced (with the same model, or one of equal value or specification), at our option. We will bear the cost of any repair or replacement and any costs of labour relating thereto.

These warranties are subject to the following conditions and limitations:

- a) A bill of sale verifying the purchase and purchase date must be provided;
- b) This warranty will not apply to any product or part thereof that is worn or broken or that has become inoperative due to abuse, misuse, accidental damage, neglect or lack of proper installation, operation or maintenance (as outlined in the applicable Instruction Manual or operating instructions) or that is being used for industrial, professional, commercial or rental purposes;
- c) This warranty will not apply to normal wear and tear or to expendable parts or accessories that may be supplied with the product that are expected to become inoperative or unusable after a reasonable period of use;
- d) This warranty will not apply to routine maintenance and consumable items, including but not limited to fuel, lubricants, vacuum bags, blades, belts, sandpaper, bits, fluids, tune-ups or adjustments;
- e) This warranty will not apply where damage is caused by repairs made or attempted by others (i.e., persons not authorized by the manufacturer);
- f) This warranty will not apply to any product that was sold to the original purchaser as a reconditioned or refurbished product (unless otherwise specified in writing);
- g) This warranty will not apply to any product or part thereof if any part from another manufacturer is installed therein or any repairs or alterations have been made or attempted by unauthorized persons;
- h) This warranty will not apply to normal deterioration of the exterior finish, including but not limited to scratches, dents, paint chips, or to any corrosion or discolouring by heat, abrasive and chemical cleaners; and
- i) This warranty will not apply to component parts sold by and identified as the product of another company, which shall be covered under the product manufacturer's warranty.

Additional limitations

This warranty applies only to the original purchaser and may not be transferred. Neither the retailer nor the manufacturer shall be liable for any other expense, loss or damage, including, without limitation, any indirect, incidental, consequential or exemplary damages arising in connection with the sale, use or inability to use this product.

Notice to Consumer

This warranty gives you specific legal rights, and you may have other rights, which may vary from province to province. The provisions contained in this warranty are not intended to limit, modify, take away from, disclaim or exclude any statutory warranties set forth in any applicable provincial or federal legislation.

Made in China

Imported by

Mastercraft Canada Toronto, Canada M4S 2B8

