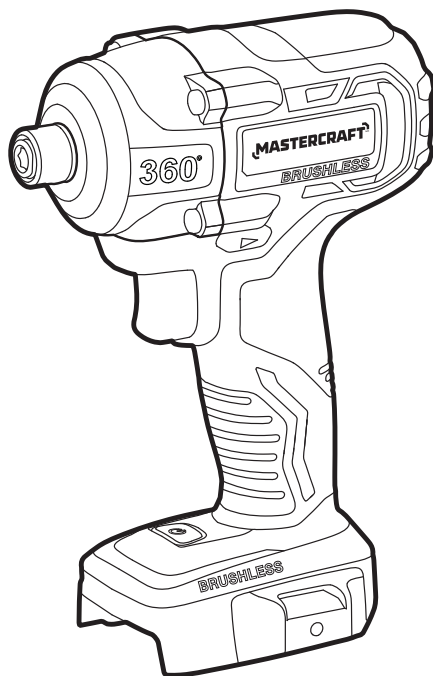


MASTERCRAFT™/MC

1/4" (6.4 MM) BRUSHLESS IMPACT DRIVER 054-7547-0



IMPORTANT:

Read and understand this instruction manual thoroughly before using the product.

INSTRUCTION MANUAL

TABLE OF CONTENTS

Technical Specifications	4
Safety Guidelines	5
Key Parts Diagram	10
Operating Instructions	11
Maintenance	17
Troubleshooting	18
Parts List	19
Warranty	21

NOTE:

If any parts are missing or damaged, or if you have any questions, please call our toll-free helpline at 1-800-689-9928.



SAVE THESE INSTRUCTIONS

- This manual contains important safety and operating instructions. Read all instructions and follow them with use of this product.

TECHNICAL SPECIFICATIONS

Rated Voltage	20 V d.c.
Max. Torque	2800 in-lb
No-load Speed	0–2800 RPM
Impact Rate	0–3300 BPM
Collet Capacity	Hex 1/4" (6.4 mm)

*Maximum battery voltage without workload; with workload nominal voltage is 18V.

Recommend using tool with Mastercraft® 20V max* Lithium-Ion 4.0 Ah battery (054-7557-6; sold separately) for optimal performance.

SAFETY GUIDELINES:



WARNING!

Safety symbols in this Instruction Manual are used to flag possible dangers. The safety symbols and their explanations require your full understanding. The safety warnings do not, by themselves, eliminate any danger, nor are they substitutes for proper accident prevention measures.



WARNING!

This Safety Alert Symbol indicates caution, warning, or danger. Failure to obey a safety warning can result in serious injury to yourself or others. To reduce the risk of injury, fire, or electric shock, always follow the safety precautions.

KNOW YOUR TOOL

To operate this tool, carefully read this Instruction Manual and all labels affixed to the cordless impact driver before using. Keep this instruction manual available for future reference.

IMPORTANT

This tool should only be serviced by a qualified service technician. For more information, call the toll-free helpline at 1-800-689-9928.

READ ALL INSTRUCTIONS THOROUGHLY.

SAVE THESE INSTRUCTIONS.

GENERAL POWER TOOL SAFETY WARNINGS



WARNING!

Read all safety warnings, instructions, illustrations and specifications provided with this power tool. Failure to follow all instructions listed below may result in electric shock, fire and/or serious injury.

SAVE ALL WARNINGS AND INSTRUCTIONS FOR FUTURE REFERENCE.

The term “power tool” in the warnings refers to your mains-operated (corded) power tool or battery-operated (cordless) power tool.

WORK AREA SAFETY

- **Keep work area clean and well lit.** Cluttered or dark areas invite accidents.
- **Do not operate power tools in explosive atmospheres, such as in the presence of flammable liquids, gases or dust.** Power tools create sparks which may ignite the dust or fumes.
- **Keep children and bystanders away while operating a power tool.** Distractions can cause you to lose control.

ELECTRICAL SAFETY

- **Power tool plugs must match the outlet. Never modify the plug in any way. Do not use any adaptor plugs with earthed (grounded) power tools.** Unmodified plugs and matching outlets will reduce risk of electric shock.
- **Avoid body contact with earthed or grounded surfaces, such as pipes, radiators, ranges and refrigerators.** There is an increased risk of electric shock if your body is earthed or grounded.
- **Do not expose power tools to rain or wet conditions.** Water entering a power tool will increase the risk of electric shock.
- **Do not abuse the cord. Never use the cord for carrying, pulling or unplugging the power tool. Keep cord away from heat, oil, sharp edges or moving parts.** Damaged or entangled cords increase the risk of electric shock.
- **When operating a power tool outdoors, use an extension cord suitable for outdoor use.** Use of a cord suitable for outdoor use reduces the risk of electric shock.
- **If operating a power tool in a damp location is unavoidable, use a ground fault circuit interrupter (GFCI) protected supply.** Use of an GFCI reduces the risk of electric shock.

PERSONAL SAFETY

- **Stay alert, watch what you are doing and use common sense when operating a power tool. Do not use a power tool while you are tired or under the influence of drugs, alcohol or medication.** A moment of inattention while operating power tools may result in serious personal injury.
- **Use personal protective equipment. Always wear eye protection.** Protective equipment such as a dust mask, non-skid safety shoes, hard hat or hearing protection used for appropriate conditions will reduce personal injuries.
- **Prevent unintentional starting. Ensure the switch is in the off-position before connecting to power source and/or battery pack, picking up or carrying the tool.** Carrying power tools with your finger on the switch or energising power tools that have the switch on invites accidents.
- **Remove any adjusting key or wrench before turning the power tool on.** A wrench or a key left attached to a rotating part of the power tool may result in personal injury.
- **Do not overreach. Keep proper footing and balance at all times.** This enables better control of the power tool in unexpected situations.
- **Dress properly. Do not wear loose clothing or jewellery. Keep your hair and clothing away from moving parts.** Loose clothes, jewellery or long hair can be caught in moving parts.
- **If devices are provided for the connection of dust extraction and collection facilities, ensure these are connected and properly used.** Use of dust collection can reduce dust-related hazards.
- **Do not let familiarity gained from frequent use of tools allow you to become complacent and ignore tool safety principles.** A careless action can cause severe injury within a fraction of a second.

POWER TOOL USE AND CARE

- **Do not force the power tool. Use the correct power tool for your application.** The correct power tool will do the job better and safer at the rate for which it was designed.
- **Do not use the power tool if the switch does not turn it on and off.** Any power tool that cannot be controlled with the switch is dangerous and must be repaired.
- **Disconnect the plug from the power source and/or remove the battery pack, if detachable, from the power tool before making any adjustments, changing accessories, or storing power tools.** Such preventive safety measures reduce the risk of starting the power tool accidentally.
- **Store idle power tools out of the reach of children and do not allow persons unfamiliar with the power tool or these instructions to operate the power tool.** Power tools are dangerous in the hands of untrained users.
- **Maintain power tools and accessories. Check for misalignment or binding of moving parts, breakage of parts and any other condition that may affect the power tool's operation. If damaged, have the power tool repaired before use.** Many accidents are caused by poorly maintained power tools.
- **Keep cutting tools sharp and clean.** Properly maintained cutting tools with sharp cutting edges are less likely to bind and are easier to control.
- **Use the power tool, accessories and tool bits etc., in accordance with these instructions, taking into account the working conditions and the work to be performed.** Use of the power tool for operations different from those intended could result in a hazardous situation.
- **Keep handles and grasping surfaces dry, clean and free from oil and grease.** Slippery handles and grasping surfaces do not allow for safe handling and control of the tool in unexpected situations.

BATTERY TOOL USE AND CARE

- **Recharge only with the charger specified by the manufacturer.** A charger that is suitable for one type of battery pack may create a risk of fire when used with another battery pack.
- **Use power tools only with specifically designated battery packs.** Use of any other battery packs may create a risk of injury and fire.
- **When battery pack is not in use, keep it away from other metal objects, like paper clips, coins, keys, nails, screws or other small metal objects, that can make a connection from one terminal to another.** Shorting the battery terminals together may cause burns or a fire.
- **Under abusive conditions, liquid may be ejected from the battery; avoid contact. If contact accidentally occurs, flush with water. If liquid contacts eyes, additionally seek medical help.** Liquid ejected from the battery may cause irritation or burns.
- **Do not use a battery pack or tool that is damaged or modified.** Damaged or modified batteries may exhibit unpredictable behaviour resulting in fire, explosion or risk of injury.

- **Do not expose a battery pack or tool to fire or excessive temperature.** Exposure to fire or temperature above 130°C (265°F) may cause explosion.
- **Follow all charging instructions and do not charge the battery pack or tool outside the temperature range specified in the instructions.** Charging improperly or at temperatures outside the specified range may damage the battery and increase the risk of fire.

SERVICE

- **Have your power tool serviced by a qualified repair person using only identical replacement parts.** This will ensure that the safety of the power tool is maintained.
- **Never service damaged battery packs.** Service of battery packs should only be performed by the manufacturer or authorized service providers.

IMPACT DRIVER SAFETY WARNINGS

SAFETY INSTRUCTIONS FOR ALL OPERATIONS

- **Hold the power tool by insulated gripping surfaces when performing an operation where the fastener may contact hidden wiring or its own cord.** Fasteners contacting a “live” wire may make exposed metal parts of the power tool “live” and could give the operator an electric shock.

ADDITIONAL SAFETY GUIDELINES FOR CORDLESS IMPACT DRIVER

- **The label on your tool may include the following symbols. The symbols and their definitions are as follows:**

V Volts

A Amperes

Hz Hertz


W Watts

min Minutes

~ Alternating current

— or d.c. Direct current

n₀ No-load speed

 Class II Construction

.../min Revolutions or reciprocation per minute

 Grounding terminal

BPM Revolutions per minute

RPM Beats per minute

 WARNING – To reduce the risk of injury, user must read instruction manual.



..... WARNING – To reduce the risk of injury always wear eye protection.



..... WARNING – To reduce the risk of injury always wear ear protection.

- **Secure the workpiece.** Clamping devices or a vise will hold the workpiece in place better than the hand.
- **Always wait until the tool has come to a complete stop before placing it down.** The tool insert can jam, which can lead to loss of control.
- **Always set the rotational direction switch to centre position before performing any kind of work on the machine (e.g., maintenance, tool change, etc.), and when transporting and storing it.** Unintentional activation of the On/Off switch may result in personal injury.
- **Wear ear protectors when using the impact driver.** Exposure to noise can cause hearing loss.
- **Use protective gloves when removing the bit from the tool, or allow the clamp to cool down first.** The bit may be hot after prolonged use.
- **Use protective gloves when operating the tool.** Protective gloves can help to keep you from being burnt and hurt.
- **Keep your hands away from the motor housing vents.** Hot gas comes from the vents during operation.
- **Release the trigger immediately when the screw is tightened to avoid breaking the screw.**



WARNING!

To reduce the risk of electric shock or damage to the charger and battery, use only the Mastercraft® batteries and chargers listed.

BATTERY PACK

054-3124-0, 054-7553-4, 054-7557-6, 054-2434-8

CHARGER

054-3126-6, 054-7559-2

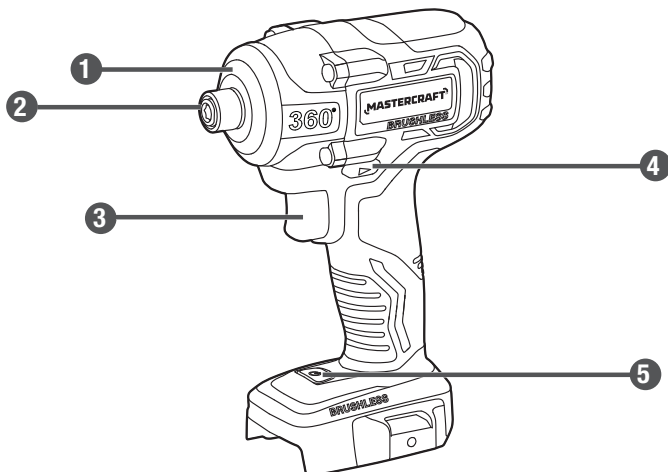
- **For best results, your battery tool should be stored and used in a location where the temperature is more than 5°C (41°F) but less than 40°C (104°F).** Do not store outside or in vehicles.

model no. 054-7547-0 | contact us 1-800-689-9928

PACKAGE CONTENTS:

Cordless impact driver, 1 belt clip, 1 bit holder, 2 single-ended screwdriver bits, and instruction manual.

KEY PARTS DIAGRAM



No.	Description
1	LED worklight
2	Sleeve
3	Variable-speed trigger switch

No.	Description
4	Direction-of-rotation selector
5	LED-worklight switch

Before attempting to use this tool, become familiar with all of its operating features and safety requirements. For optimum performance and safety, read the following operating instructions carefully before using.



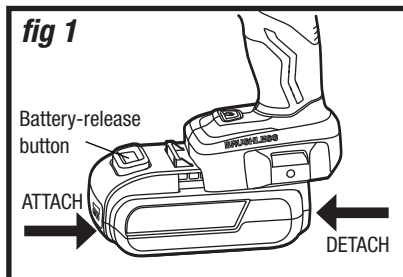
WARNING!

- Remove the cordless impact driver from the package and examine it carefully. Do not discard the carton or any packaging material until all parts have been examined.
- If any part of the impact driver is missing or damaged, do not attach the battery pack to the tool or use the tool until the part has been repaired or replaced. Failure to heed this warning could result in serious injury.
- Do not let familiarity with the cordless impact driver to cause a lack of alertness. A fraction of a second of carelessness is enough to cause severe injury.

OPERATING INSTRUCTIONS

TO ATTACH BATTERY PACK (fig 1)

1. Lock the variable-speed trigger switch on the impact driver by placing the direction-of-rotation selector (forward/centre-lock/reverse) in the centre position.
2. Align the raised rib on the battery pack with the grooves of the impact driver, and then attach the battery pack to the impact driver.
3. Make sure that the latch on the battery pack snaps into place, and that the battery pack is attached securely to the tool before beginning operation.



TO DETACH THE BATTERY PACK (fig 1)

1. Lock the variable-speed trigger switch on the impact driver by placing the direction-of-rotation selector (forward/centre-lock/reverse) in the centre position.
2. Depress the battery-release button, located on the front of the battery pack, to release the battery pack.
3. Pull the battery pack out and remove it from the tool.

NOTICE: When placing a battery pack on the tool, be sure that the raised rib on the battery pack aligns with the groove on the cordless impact driver and the latches snap into place properly. Improper assembly of the battery pack can cause damage to internal components.

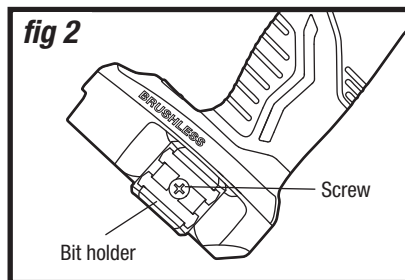


WARNING!

- To avoid the possibility of accidental starting, always take care to lock the variable-speed trigger switch by placing the direction-of-rotation selector in the centre (locked) position when you are attaching the battery pack or performing other adjustments to the tool.

INSTALL THE BIT HOLDER (fig 2)

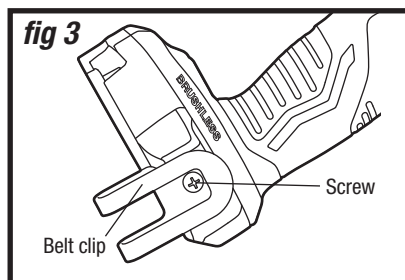
1. Remove the battery from the tool.
2. Align the rib of the bit holder with the hole on the base of the cordless impact driver.
3. Insert the screw (included) and tighten the screw securely with a screwdriver (not included). The bit holder can be positioned on either side of the tool.

**REMOVE THE BIT HOLDER (fig 2)**

1. Remove the battery from the tool.
2. Use a screwdriver (not included) to loosen the screw that attaches the bit holder to the cordless impact driver.
3. Remove the screw and the bit holder.

INSTALL THE BELT CLIP (fig 3)

1. Remove the battery from the tool.
2. Align the rib of the clip with the hole on the base of the cordless impact driver.
3. Insert the screw (included) and tighten the screw securely with a screwdriver (not included). The belt clip can be positioned on either side of the tool.

**REMOVE THE BELT CLIP (fig 3)**

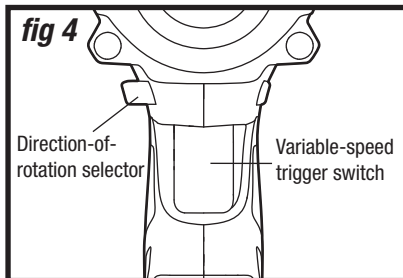
1. Remove the battery from the tool.
2. Use a screwdriver (not included) to loosen the screw that attaches the belt clip to the cordless impact driver.
3. Remove the screw and the belt clip.

TRIGGER SWITCH (fig 4)

1. To turn the impact driver ON, depress the variable-speed trigger switch.
2. To turn it OFF, release the variable-speed trigger switch.

VARIABLE SPEED (fig 4)

The variable-speed trigger switch delivers higher speed with increased trigger pressure and lower speed with decreased trigger pressure.



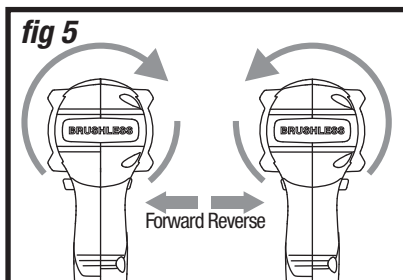
DIRECTION-OF-ROTATION SELECTOR (fig 5)

The direction of rotation of the bit is reversible and is controlled by a selector located above the variable-speed trigger switch. With the impact driver held in normal operating position:

Position the direction-of-rotation selector to the left of the tool for forward rotation.

Position the direction-of-rotation selector to the right of the tool for reverse rotation.

Position the direction-of-rotation selector in the centre to lock the tool off.



ELECTRIC BRAKE

To stop the impact driver, release the variable-speed trigger switch and allow the tool to come to a complete stop. The electric brake quickly stops the rotation. This feature engages automatically when you release the variable-speed trigger switch.

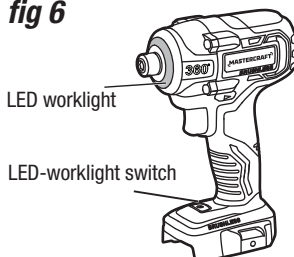
NOTICE:

- To prevent gear damage, always allow the impact driver to come to a complete stop before changing the direction of rotation.
- The impact driver will not run unless the direction-of-rotation selector is engaged fully to the left or to the right.

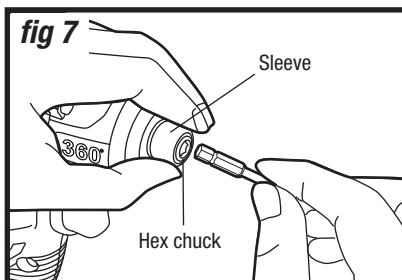
LED WORKLIGHT (fig 6)

The LED worklight, located in the front of the cordless impact driver, will illuminate when the variable-speed trigger switch is depressed and will automatically turn off about 10 seconds after the variable-speed trigger switch is released. This provides increased visibility in dark places.

The LED worklight can also be separately controlled by the LED-worklight switch. The LED worklight will illuminate when the LED-worklight switch is pressed and will turn off when it is pressed again. The LED worklight will illuminate for up to 20 minutes after turning on the LED-worklight switch.

fig 6**INSTALLING A DRIVER BIT OR SOCKET BIT (fig 7)**

1. Lock the variable-speed trigger switch by placing the direction-of-rotation selector in the OFF (centre) position.
2. With one hand, pull the sleeve toward the front of the tool and hold it in place.
3. With the other hand, insert a 1/4" (6.4 mm) bit into the hex chuck in the bit retainer.
4. Release the sleeve and verify that it returns to its original position.

fig 7**REMOVING A DRIVER BIT OR SOCKET BIT (fig 7)**

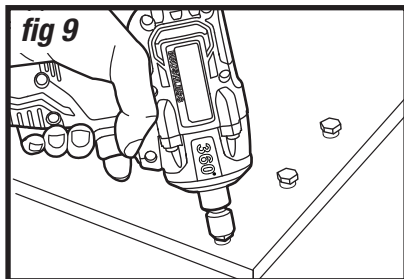
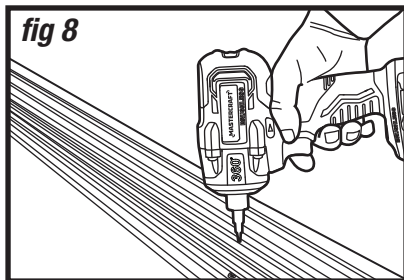
1. Lock the variable-speed trigger switch by placing the direction-of-rotation selector in the OFF (centre) position.
2. Pull the sleeve toward the front of the tool and hold it in place.
3. Remove the bit from the hex chuck in the bit retainer.
4. Release the sleeve.

**WARNING!**

- If the sleeve does not return to its original position, the bit is not correctly installed. Retry until the bit is properly installed.
- Only use sockets designed for impact drivers. Sockets not designed for impact drivers could break and result in user injury. Inspect sockets prior to use to ensure that they have no cracks or other visible damage.
- Use protective gloves when removing the bit from the tool or allow the bit to cool down first. The bit may be hot after prolonged use.

TIGHTENING SCREWS OR NUTS (fig 8/fig 9)

1. Install the correct bit/socket.
2. Position the direction-of-rotation selector to the left of the tool for forward rotation.
3. Apply just enough pressure to keep the bit/socket engaged on the screw or nut.
4. Apply minimal pressure to the variable-speed trigger switch initially. Increase the speed only when full control can be maintained.



LOOSENING SCREWS AND NUTS (fig 8/fig 9)

1. Install the correct bit/socket.
2. Position the direction-of-rotation selector to the right of the tool for reverse rotation.
3. Apply just enough pressure to keep the bit/socket engaged on the screw or nut.
4. Apply minimal pressure to the variable-speed trigger switch initially. Increase the speed only when full control can be maintained.

TIGHTENING TORQUE

The fastening torque is affected by a wide variety of factors, including the those listed below. After fastening, always check the torque with a torque wrench.

Voltage: Low voltage, due to a nearly discharged battery, will reduce fastening torque.

Socket size: Failure to use the correct socket size will cause a reduction in fastening torque.

Bolt size: Larger bolt diameters generally require higher fastening torque. Fastening torque will also vary according to length, grade, and torque coefficient.

Bolt: Ensure that all threads are free of rust and other debris to allow proper fastening torque.

Material: The type of material and surface finish of the material will affect fastening torque.

NOTICE: Before starting your job, always perform a test operation to determine the proper fastening time.



WARNING!

- Do not over-tighten, because the force of the impact driver can break the fastener. Keep the impact driver pointed straight at the fastener to avoid damaging the fastener head.

MAINTENANCE

BEFORE EACH USE:

1. Inspect the cordless impact driver, the variable-speed trigger switch, and the battery pack for damage.
2. Check for damaged, missing, or worn parts.
3. Check for loose screws, misalignment or binding of moving parts, or any other condition that may affect the operation.
4. If abnormal vibration or noise occurs, turn the tool off immediately and have the problem corrected before further use. Remove the battery from the power tool before cleaning or performing any maintenance.

CLEANING

Using compressed air may be the most effective cleaning method. Always wear safety goggles when cleaning tools using compressed air.



WARNING!

- Do not let brake fluids, gasoline, petroleum-based products, penetrating oil, etc., come into contact with plastic parts. These substances contain chemicals that can damage, weaken, or destroy plastic.
- When servicing, use only identical replacement parts. The use of any other parts may create a hazard or cause damage to the product.
- Use only accessories that are recommended for this cordless impact driver by the manufacturer. Accessories that may be suitable for one tool may become hazardous when used with another tool.
- To ensure safety and reliability, all repairs should be performed by a qualified service technician.

TROUBLESHOOTING

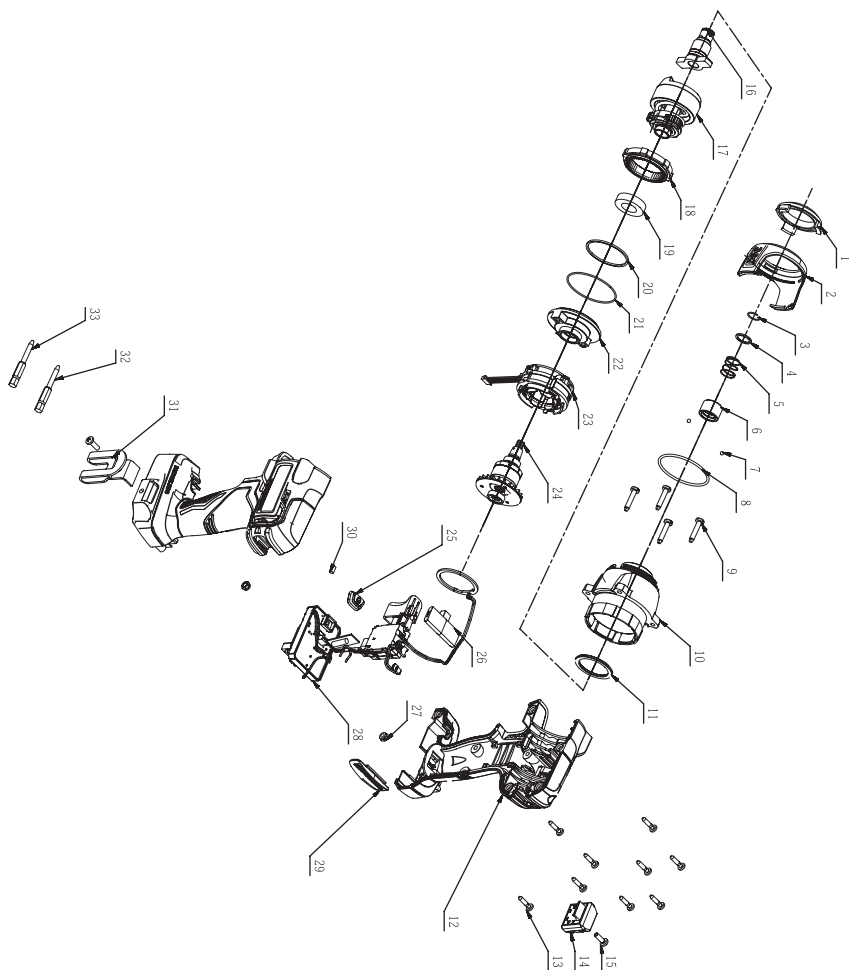
Problem	Possible Causes	Solution
The bit cannot be installed.	The sleeve is not released.	Release the sleeve.
	The bit does not fit the sleeve.	Use a suitable bit.
The motor overheats.	Be sure the cooling vents are free of dust and obstacles.	Clean and clear vents. Do not cover with hand during operation.
The impact driver does not work.	The battery is depleted.	Charge the battery.
	The tool is overheated.	Allow the tool to cool down.

If the problem remains unsolved after performing the checks described above, call the toll-free helpline at 1-800-689-9928.

**WARNING!**

- Turn the variable-speed trigger switch to the "OFF" (centre) position and remove the battery from the power tool before performing troubleshooting procedures.

EXPLODED VIEW



PARTS LIST

No.	Part No.	Description
1	3127567000	LED Cover
2	3130018000	Decorative Cover
3	5660035000	Circlips For Shaft
4	5650192000	Washer
5	3660177000	Spring
6	3551835000	Bush
7	5700178000	Steel Ball
8	5660274000	C Ring
9	5610284000	Tapping Screw
10	2826340000	Front Gear Housing Assembly
11	5650501000	Washer
12	3900145000	L R Housing set
13	5610225000	Hexagon Lobuar Screw
14	3321321000	Bit Holder
15	5620040000	Screw
16	3552639000	Output Shaft
17	2825806000	Impact Block Assembly

No.	Part No.	Description
18	3520984000	Ring Gear
19	5700181000	Bearing
20	5690271000	Rubber Ring
21	5690357000	O Ring
22	3129083000	Rear Gear Housing
23	2740401000	Stator
24	2826357000	Rotor Assembly
25	3129915000	Button
26	3127732000	F/R Button
27	5630231000	Nut
28	2830485000	Electric Assembly
29	3129854000	Logo
30	3121038000	Rubber Stick
31	3705301000	Hook
32	3810426000	Screw Bit
33	3810429000	Screw Bit

If any parts are missing or damaged, or if you have any questions, please call the toll-free helpline at 1-800-689-9928.

This Mastercraft product is guaranteed for a period of **3 years from the date of original retail purchase** against defects in workmanship and materials, except for the following components:

- a) Component A: Batteries, chargers and carrying case, which are guaranteed for a period of 2 years from the date of original retail purchase against defects in workmanship and materials;
- b) Component B: Accessories, which are guaranteed for a period of 1 year from the date of original retail purchase against defects in workmanship and materials.

Subject to the conditions and limitations described below, this product, if returned to us with proof of purchase within the stated warranty period and if covered under this warranty, will be repaired or replaced (with the same model, or one of equal value or specification), at our option. We will bear the cost of any repair or replacement and any costs of labour relating thereto.

These warranties are subject to the following conditions and limitations:

- a) a bill of sale verifying the purchase and purchase date must be provided;
- b) this warranty will not apply to any product or part thereof which is worn or broken or which has become inoperative due to abuse, misuse, accidental damage, neglect or lack of proper installation, operation or maintenance (as outlined in the applicable owner's manual or operating instructions) or which is being used for industrial, professional, commercial or rental purposes;
- c) this warranty will not apply to normal wear and tear or to expendable parts or accessories that may be supplied with the product that are expected to become inoperative or unusable after a reasonable period of use;
- d) this warranty will not apply to routine maintenance and consumable items such as, but not limited to, fuel, lubricants, vacuum bags, blades, belts, sandpaper, bits, fluids, tune-ups or adjustments;
- e) this warranty will not apply where damage is caused by repairs made or attempted by others (i.e., persons not authorized by the manufacturer);
- f) this warranty will not apply to any product that was sold to the original purchaser as a reconditioned or refurbished product (unless otherwise specified in writing);
- g) this warranty will not apply to any product or part thereof if any part from another manufacturer is installed therein or any repairs or alterations have been made or attempted by unauthorized persons;
- h) this warranty will not apply to normal deterioration of the exterior finish, such as, but not limited to, scratches, dents, paint chips, or to any corrosion or discolouring by heat, abrasive and chemical cleaners; and

- i) this warranty will not apply to component parts sold by and identified as the product of another company, which shall be covered under the product manufacturer's warranty, if any.

Additional Limitations

This warranty applies only to the original purchaser and may not be transferred. Neither the retailer nor the manufacturer shall be liable for any other expense, loss or damage, including, without limitation, any indirect, incidental, consequential or exemplary damages arising in connection with the sale, use or inability to use this product.

Notice to Consumer

This warranty gives you specific legal rights, and you may have other rights, which may vary from province to province. The provisions contained in this warranty are not intended to limit, modify, take away from, disclaim or exclude any statutory warranties set forth in any applicable provincial or federal legislation.

Made in China

Imported by

Mastercraft Canada Toronto, Canada M4S 2B8

