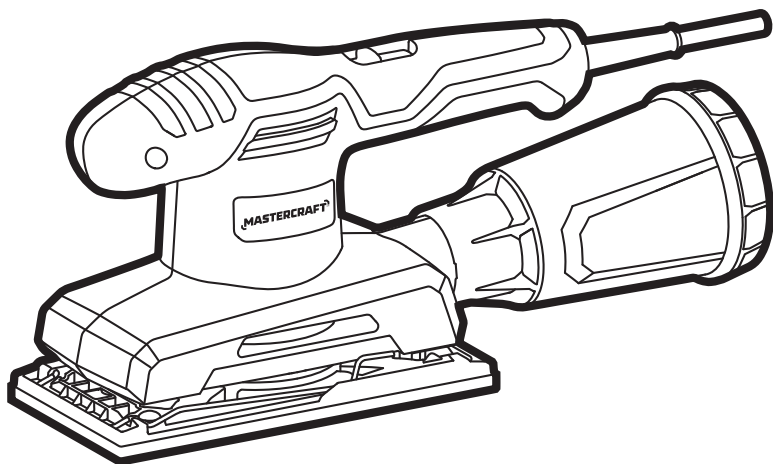


MASTERCRAFT™/MC

1/3 SHEET SANDER 054-7294-0



IMPORTANT:

Read and understand this instruction manual thoroughly before using the product.

INSTRUCTION MANUAL

TABLE OF CONTENTS

Technical Specifications	4
Safety Guidelines	5
Key Parts Diagram	9
Operating Instructions	10
Maintenance	14
Troubleshooting	15
Parts List	16
Warranty	18

NOTE:

If any parts are missing or damaged, or if you have any questions, please call our toll-free helpline at 1-800-689-9928.



SAVE THESE INSTRUCTIONS

- This manual contains important safety and operating instructions. Read all instructions and follow them with use of this product.

TECHNICAL SPECIFICATIONS

Rated Voltage	120 V~, 60 Hz
Rated Input	2.4 A
No-load Speed	13,000 OPM

SAFETY GUIDELINES:



WARNING!

Safety symbols in this Instruction Manual are used to flag possible dangers. The safety symbols and their explanations require your full understanding. The safety warnings do not, by themselves, eliminate any danger, nor are they substitutes for proper accident prevention measures.



WARNING!

This Safety Alert Symbol indicates caution, warning, or danger. Failure to obey a safety warning can result in serious injury to yourself or others. To reduce the risk of injury, fire, or electric shock, always follow the safety precautions.

KNOW YOUR TOOL

To operate this tool, carefully read this Instruction Manual and all labels affixed to the sheet sander before using. Keep this instruction manual available for future reference.

IMPORTANT

This tool should only be serviced by a qualified service technician. For more information, call the toll-free helpline at 1-800-689-9928.

READ ALL INSTRUCTIONS THOROUGHLY.

SAVE THESE INSTRUCTIONS.

GENERAL POWER TOOL SAFETY WARNINGS



WARNING!

Read all safety warnings, instructions, illustrations and specifications provided with this power tool. Failure to follow all instructions listed below may result in electric shock, fire and/or serious injury.

SAVE ALL WARNINGS AND INSTRUCTIONS FOR FUTURE REFERENCE.

The term “power tool” in the warnings refers to your mains-operated (corded) power tool or battery-operated (cordless) power tool.

WORK AREA SAFETY

- **Keep work area clean and well lit.** Cluttered or dark areas invite accidents.
- **Do not operate power tools in explosive atmospheres, such as in the presence of flammable liquids, gases or dust.** Power tools create sparks which may ignite the dust or fumes.
- **Keep children and bystanders away while operating a power tool.** Distractions can cause you to lose control.

ELECTRICAL SAFETY

- **Power tool plugs must match the outlet. Never modify the plug in any way. Do not use any adaptor plugs with earthed (grounded) power tools.** Unmodified plugs and matching outlets will reduce risk of electric shock.
- **Avoid body contact with earthed or grounded surfaces, such as pipes, radiators, ranges and refrigerators.** There is an increased risk of electric shock if your body is earthed or grounded.
- **Do not expose power tools to rain or wet conditions.** Water entering a power tool will increase the risk of electric shock.
- **Do not abuse the cord. Never use the cord for carrying, pulling or unplugging the power tool. Keep cord away from heat, oil, sharp edges or moving parts.** Damaged or entangled cords increase the risk of electric shock.
- **When operating a power tool outdoors, use an extension cord suitable for outdoor use.** Use of a cord suitable for outdoor use reduces the risk of electric shock.
- **If operating a power tool in a damp location is unavoidable, use a ground fault circuit interrupter (GFCI) protected supply.** Use of an GFCI reduces the risk of electric shock.

PERSONAL SAFETY

- **Stay alert, watch what you are doing and use common sense when operating a power tool. Do not use a power tool while you are tired or under the influence of drugs, alcohol or medication.** A moment of inattention while operating power tools may result in serious personal injury.
- **Use personal protective equipment. Always wear eye protection.** Protective equipment such as a dust mask, non-skid safety shoes, hard hat or hearing protection used for appropriate conditions will reduce personal injuries.
- **Prevent unintentional starting. Ensure the switch is in the off-position before connecting to power source and/or battery pack, picking up or carrying the tool.** Carrying power tools with your finger on the switch or energising power tools that have the switch on invites accidents.
- **Remove any adjusting key or wrench before turning the power tool on.** A wrench or a key left attached to a rotating part of the power tool may result in personal injury.
- **Do not overreach. Keep proper footing and balance at all times.** This enables better control of the power tool in unexpected situations.
- **Dress properly. Do not wear loose clothing or jewellery. Keep your hair and clothing away from moving parts.** Loose clothes, jewellery or long hair can be caught in moving parts.
- **If devices are provided for the connection of dust extraction and collection facilities, ensure these are connected and properly used.** Use of dust collection can reduce dust-related hazards.
- **Do not let familiarity gained from frequent use of tools allow you to become complacent and ignore tool safety principles.** A careless action can cause severe injury within a fraction of a second.

POWER TOOL USE AND CARE

- **Do not force the power tool. Use the correct power tool for your application.** The correct power tool will do the job better and safer at the rate for which it was designed.
- **Do not use the power tool if the switch does not turn it on and off.** Any power tool that cannot be controlled with the switch is dangerous and must be repaired.
- **Disconnect the plug from the power source and/or remove the battery pack, if detachable, from the power tool before making any adjustments, changing accessories, or storing power tools.** Such preventive safety measures reduce the risk of starting the power tool accidentally.
- **Store idle power tools out of the reach of children and do not allow persons unfamiliar with the power tool or these instructions to operate the power tool.** Power tools are dangerous in the hands of untrained users.
- **Maintain power tools and accessories. Check for misalignment or binding of moving parts, breakage of parts and any other condition that may affect the power tool's operation. If damaged, have the power tool repaired before use.** Many accidents are caused by poorly maintained power tools.
- **Keep cutting tools sharp and clean.** Properly maintained cutting tools with sharp cutting edges are less likely to bind and are easier to control.
- **Use the power tool, accessories, tool bits, etc., in accordance with these instructions, taking into account the working conditions and the work to be performed.** Use of the power tool for operations different from those intended could result in a hazardous situation.
- **Keep handles and grasping surfaces dry, clean and free from oil and grease.** Slippery handles and grasping surfaces do not allow for safe handling and control of the tool in unexpected situations.

SERVICE

- **Have your power tool serviced by a qualified repair person using only identical replacement parts.** This will ensure that the safety of the power tool is maintained.

ADDITIONAL SAFETY GUIDELINES FOR THE SANDER

- **The label on your tool may include the following symbols. The symbols and their definitions are as follows:**

V Volts

A Amperes

Hz Hertz

W Watts

min Minutes

~ Alternating current

n_0 No-load speed



..... Class II Construction

.../min or min⁻¹ The Revolutions or reciprocation per minute

OPM Oscillations per minute



..... WARNING – To reduce the risk of injury, user must read instruction manual.



..... WARNING –To reduce the risk of injury, always wear eye protection.



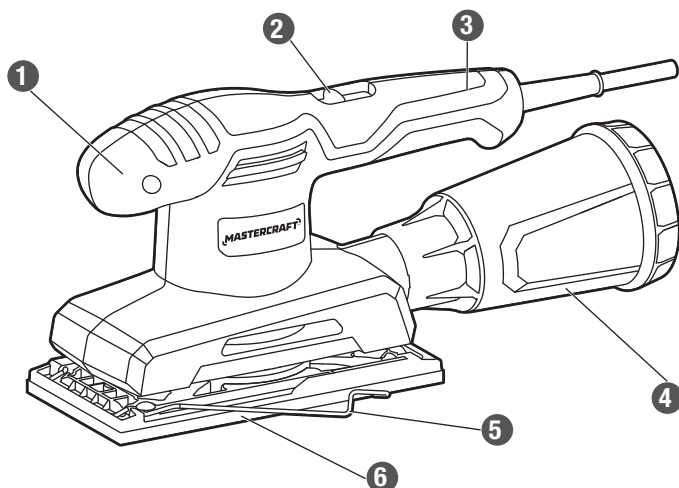
..... WARNING – To reduce the risk of injury, always wear ear protection.

- **A suitable breathing respirator must be worn while sanding lead paint, some woods and metal to avoid breathing the harmful/toxic dust or air.**
- **Always wear safety goggles and a dust mask when sanding, especially when sanding overhead.**
- **The machine is not suitable for wet sanding.**
- **Do not use sanding paper that is larger than needed.** Extra paper extending beyond the sanding pad can cause serious lacerations.
- **Secure the workpiece.** A workpiece clamped with clamping devices or in a vice is held more securely than by hand.
- **Attach the dust canister to the tool and empty it frequently.** Do not throw sanding dust on an open fire, because materials in fine particle form may be explosive.
- **Protect your hearing.** Wear appropriate personal hearing protection during use. Under some conditions and duration of use, noise from this product may contribute to hearing loss.

PACKAGE CONTENTS:

1/3 sheet sander, microfilter dust canister, sanding paper, punch plate and instruction manual.

KEY PARTS DIAGRAM



No.	Description
1	Auxiliary handle
2	On/off switch
3	Main handle

No.	Description
4	Microfilter dust canister
5	Sanding-paper-clamp lever
6	Sanding pad



WARNING!

- Remove the sheet sander from the package and examine it carefully. Do not discard the carton or any packaging material until all parts have been examined.
- If any part of the sheet sander is missing or damaged, do not attach the tool to a power source or use the tool until the part has been repaired or replaced. Failure to heed this warning could result in serious injury.
- Do not allow familiarity with the sheet sander to cause a lack of alertness. A fraction of a second of carelessness is enough to cause severe injury.

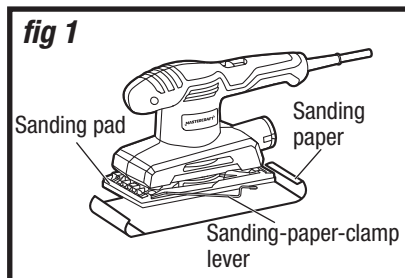
OPERATING INSTRUCTIONS

ATTACH THE SANDING PAPER (fig 1)

The non-adhesive sanding paper clamps to the front and back of the sanding pad.

1. Disconnect the sander from the power source.
2. Remove any dust or debris from the sanding pad.
3. The sanding-paper-clamp levers are located on each side of the sander and are locked into slots on top of the sanding pad.
4. Lift each of the two levers and disengage them from the slots in the sanding pad. This will release the tension on the paper clamps that hold the paper in position on the underside of the sanding pad.
5. Insert the front end of the sanding paper under the front paper clamp.
6. Lift up the lever that controls the front paper clamp and lock it back into the slot on the sanding pad. This will securely clamp the paper to the front of the sanding pad.
7. Smooth out the sanding paper by pressing it tightly against the bottom of the pad (front to back).
8. Insert the back edge of the sanding paper under the back paper clamp, fit the sanding paper as tightly as possible, and lift up the back clamp lever and lock it into place. This will securely clamp the paper to the back of the sanding pad.

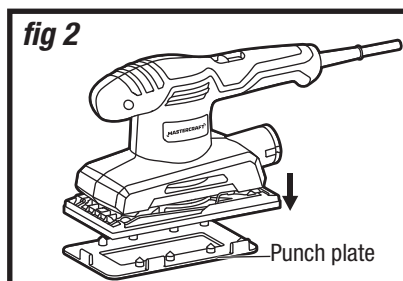
The sanding paper should now be positioned tightly against the underside of the sanding pad from front to back and securely clamped in place.



USE THE PUNCH PLATE (fig 2)

After the sanding paper has been clamped to the sanding pad, use the punch plate to punch the dust-collection holes.

1. Align the punch plate with the sanding pad and push down on the sander until the punch plate pierces the sanding paper.
2. Remove the punch plate from the sanding pad.



NOTICE: In order for the dust-collection system to function properly, it is necessary that holes are punched in the sanding paper such that the holes on the sanding paper align with the holes on the sanding pad.



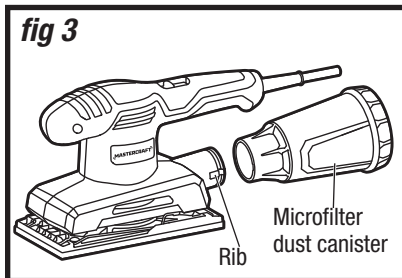
WARNING!

- Never connect the sheet sander to the power source when you are assembling parts, making adjustments, installing or removing sanding paper, cleaning, or when it is not in use. Failure to unplug the sander could result in accidental starting, causing possible serious personal injury.

INSTALL THE MICROFILTER DUST CANISTER (fig 3)

Your sander is supplied with a dust canister to help you keep the working area clean. The dust canister is ideal for smaller jobs. For maximum efficiency, the dust canister should be emptied frequently during operation.

1. Disconnect the sander from the power source.
2. Align the slot on the dust canister with the rib on the tool, and then push the dust canister onto the tool until it locks into place.

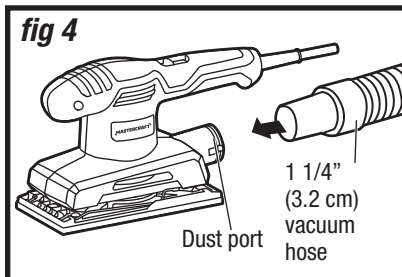


REMOVE THE MICROFILTER DUST CANISTER (fig 3)

1. Disconnect the sander from the power source.
2. Simply pull the dust canister away from the tool.

ATTACH THE VACUUM HOSE (fig 4)

Directly attach the 1 1/4" (3.2 cm) vacuum hose to the dust port, and then connect the opposite end of the vacuum hose to a vacuum cleaner.



WARNING!

- Collected sanding dust from sanding surface coatings (polyurethane, linseed oil, etc.) can self-ignite in dust canister or elsewhere and cause fire. To reduce risk, empty dust canister frequently and strictly follow the sander manual and coating manufacturer's instructions.

CLEAN AND EMPTY THE DUST CANISTER (fig 5)

1. Remove the dust canister from the tool.
2. Hold the dust-canister body and remove the microfilter by rotating it counter-clockwise.
3. Pour dust from the dust-canister body.
4. Knock excess dust out of the microfilter or remove dust with a soft brush. You may notice that all the dust may not come out of the microfilter. This will not affect sanding performance, but it will reduce dust-collection efficiency.

fig 5a

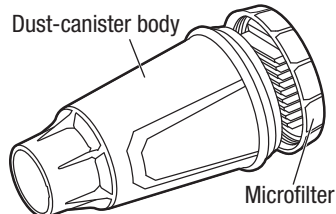
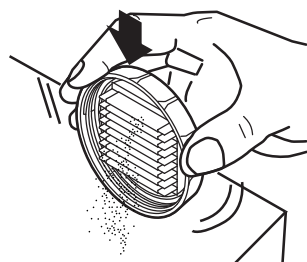


fig 5b



SELECT THE CORRECT SANDING PAPER

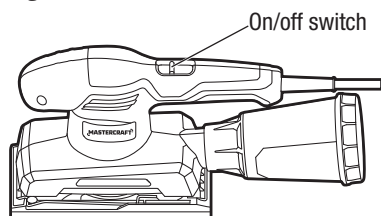
Available grades are: coarse, medium, and fine. Use a coarse grit to sand down rough finishes, medium grit to smooth the work, and fine grit to finish off.

It is best to make a trial run on a scrap piece of material to determine the optimum grades of sanding paper for a particular job.

TURN THE SANDER ON AND OFF (fig 6)

1. Connect the plug on the sander's power cord to a standard household outlet.
2. To turn on the sander, push the slide switch to the left.
3. To turn it off, slide the switch to the right.

fig 6



NOTICE: The microfilter should not rinsed with water.



WARNING!

- Before connecting the sander to power source, always check to be sure that the switch is in the off position. Failure to do so could result in accidental starting of the sander, causing possible serious injury.

SANDING

This sander can be used for most sanding operations on materials such as wood, plastic, metal, and painted surfaces. Do not use the sander for wet sanding.

1. Plug the sander to the power source.
2. Start the sander and allow the motor build to its maximum speed.
3. Place the sander on the workpiece so that the sanding paper is flat and fully in contact with the workpiece.
4. For best sanding results, apply light pressure on the sander, but do not force the tool.
5. Move the sander slowly over the workpiece, guiding it in a forward and backward motion. The removal rate and the sanding pattern are determined by the choice of sanding paper and the work surface.
6. Do not sand on one spot too long, as the sander's rapid action may remove too much material, making the surface uneven.
7. Upon completion of the sanding operation, remove the sander from the workpiece, turn the sander off and wait until it comes to a complete stop before putting it down.

NOTICE:

- Do not switch from a coarse grit to a very fine grit in one step, because it may be difficult to remove the marks made by the coarse grit. Use the coarsest grits for the roughing operation, and finish by using successively finer grits.
- Applying additional pressure only slows the motor, rapidly wears sanding paper, and greatly reduces sander speed. Excessive pressure will overload the motor, possibly damage from motor overheating, and can result in inferior work.

MAINTENANCE

The tool may be cleaned most effectively with compressed dry air. Always wear safety goggles when cleaning tools with compressed air. Before each use:

- Inspect the tool, the trigger switch, and the cord for damage.
- Check for damaged, missing, or worn parts.

Check for loose screws, misalignment or binding of moving parts, or any other condition that may affect the operation.

If abnormal vibration or noise occurs, turn the tool off immediately, and have the problem corrected before further use.



WARNING!

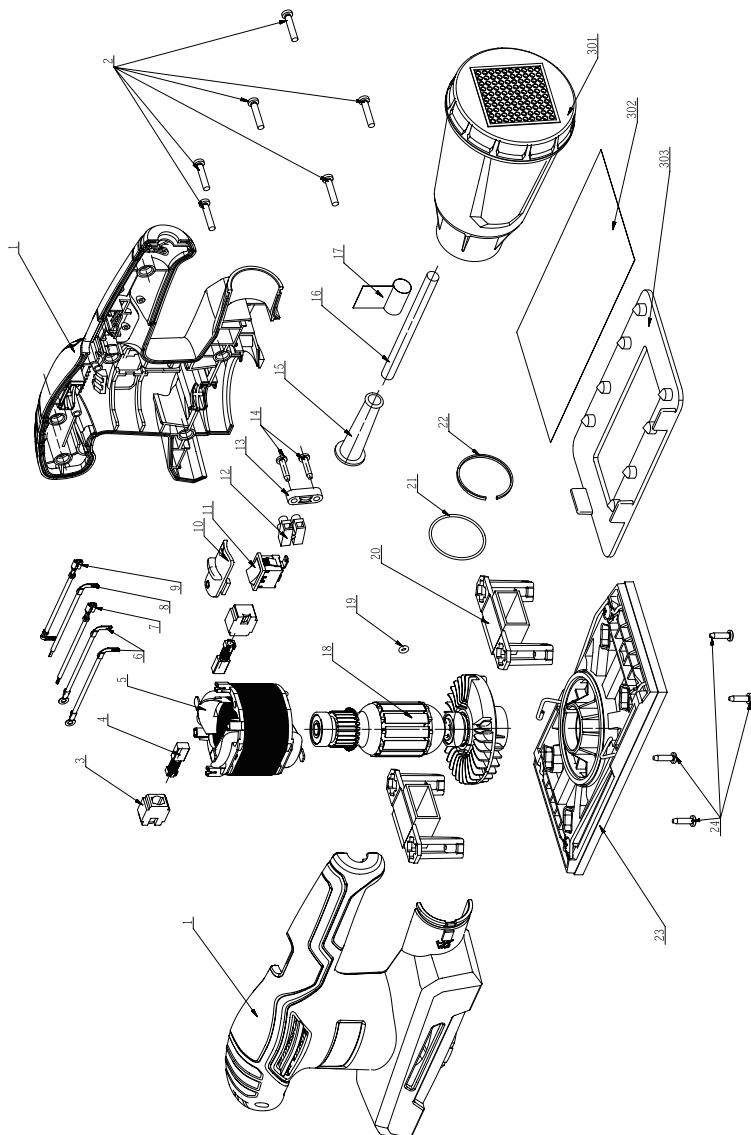
- To avoid personal injury, always unplug the tool when cleaning or performing any maintenance.
- Do not let brake fluids, gasoline, petroleum-based products, penetrating oil, etc., come into contact with plastic parts. These substances contain chemicals that can damage, weaken, or destroy plastic.
- When servicing, use only identical replacement parts. The use of any other parts may create a hazard or cause damage to the product.
- Use only accessories that are recommended for this sander by the manufacturer. Accessories that may be suitable for one tool may become hazardous when used with another tool.
- To ensure safety and reliability, all repairs should be performed by a qualified service technician.
- If the supply cord is damaged, it must be replaced by a specially-prepared cord available through the service organization.

TROUBLESHOOTING

Problem	Possible Causes	Solution
The motor is overheating.	Be sure that the cooling vents are free from dust and obstacles.	Clean and clear the vents. Do not cover the vents with your hand during operation.
The sander does not start.	The sander is not connected to power source.	Plug the sander into a power source.
Unsatisfactory sanding result.	The sanding paper is worn.	Replace with a new sanding paper.
	The sanding paper is not suitable for the workpiece.	Use the correct sanding paper.

If the problem remains unsolved after performing the checks described above, call the toll-free helpline at 1-800-689-9928.

EXPLODED VIEW



No.	Part No.	Description
1	3900216000	L R Housing Set
2	5610106000	Tapping Screw
3	2800018000	Brush Holder
4	4960008000	Carbon Brush
5	2740099000	Stator
6	4860360000	Internal Wire Assembly
7	2822297000	Inter Wire Assembly
8	4860299000	Internal Wire Assembly
9	4860297000	Internal Wire Assembly
10	3125569000	Switch Actuator
11	4870385000	Rocker Switch
12	4930004000	Connector
13	3120234000	Cord Anchorage
14	5610024000	Tapping Screw
15	3121011000	Cord Guard
16	4810003000	Power Cord and Plug

No.	Part No.	Description
17	2490136000	Nylon String
18	2751236000	Rotor Set
19	5690013000	O-ring
20	3120315000	Pad Support
21	5690268000	O-ring
22	5660187000	C-ring
23	2826723000	Base Plate Set
24	5610023000	Tapping Screw
301	2826581000	Dust Box Assembly
302	2820416000	Sanding Paper
303	3121388000	Paper Punch

If any parts are missing or damaged, or if you have any questions, please call the toll-free helpline at 1-800-689-9928.

This Mastercraft product is guaranteed for a period of **3 years from the date of original retail purchase** against defects in workmanship and materials, except for the following components:

- a) Component A: Batteries, chargers and carrying case, which are guaranteed for a period of 2 years from the date of original retail purchase against defects in workmanship and materials;
- b) Component B: Accessories, which are guaranteed for a period of 1 year from the date of original retail purchase against defects in workmanship and materials.

Subject to the conditions and limitations described below, this product, if returned to us with proof of purchase within the stated warranty period and if covered under this warranty, will be repaired or replaced (with the same model, or one of equal value or specification), at our option. We will bear the cost of any repair or replacement and any costs of labour relating thereto.

These warranties are subject to the following conditions and limitations:

- a) a bill of sale verifying the purchase and purchase date must be provided;
- b) this warranty will not apply to any product or part thereof which is worn or broken or which has become inoperative due to abuse, misuse, accidental damage, neglect or lack of proper installation, operation or maintenance (as outlined in the applicable owner's manual or operating instructions) or which is being used for industrial, professional, commercial or rental purposes;
- c) this warranty will not apply to normal wear and tear or to expendable parts or accessories that may be supplied with the product that are expected to become inoperative or unusable after a reasonable period of use;
- d) this warranty will not apply to routine maintenance and consumable items such as, but not limited to, fuel, lubricants, vacuum bags, blades, belts, sandpaper, bits, fluids, tune-ups or adjustments;
- e) this warranty will not apply where damage is caused by repairs made or attempted by others ((i.e., persons not authorized by the manufacturer);
- f) this warranty will not apply to any product that was sold to the original purchaser as a reconditioned or refurbished product (unless otherwise specified in writing);
- g) this warranty will not apply to any product or part thereof if any part from another manufacturer is installed therein or any repairs or alterations have been made or attempted by unauthorized persons;
- h) this warranty will not apply to normal deterioration of the exterior finish, such as, but not limited to, scratches, dents, paint chips, or to any corrosion or discolouring by heat, abrasive and chemical cleaners; and
- i) this warranty will not apply to component parts sold by and identified as the product of another company, which shall be covered under the product manufacturer's warranty, if any.

Additional Limitations

This warranty applies only to the original purchaser and may not be transferred. Neither the retailer nor the manufacturer shall be liable for any other expense, loss or damage, including, without limitation, any indirect, incidental, consequential or exemplary damages arising in connection with the sale, use or inability to use this product.

Notice to Consumer

This warranty gives you specific legal rights, and you may have other rights, which may vary from province to province. The provisions contained in this warranty are not intended to limit, modify, take away from, disclaim or exclude any statutory warranties set forth in any applicable provincial or federal legislation.

Made in China

Imported by

Mastercraft Canada Toronto, Canada M4S 2B8

