

# MASTERCRAFT™/MC

## CORDLESS POLISHER

054-7285-2



### IMPORTANT:

Read and understand this instruction manual thoroughly before using the product.

## INSTRUCTION MANUAL



### TABLE OF CONTENTS

Technical Specifications	4
Safety Guidelines	5
Key Parts Diagram	10
Assembly Instructions	11
Operating Instructions	12
Maintenance	13
Troubleshooting	14
Parts List	15
Warranty	17

#### NOTE:

If any parts are missing or damaged, or if you have any questions, please call our toll-free helpline at 1-800-689-9928.



#### SAVE THESE INSTRUCTIONS

- This manual contains important safety and operating instructions. Read all instructions and follow them with use of this product.

**TECHNICAL SPECIFICATIONS**

Rated Voltage	20 V d.c.
No-Load Speed	3800 RPM
Base Plate Diameter	7" (17.8 cm)
Batteries info:	1.5 Ah Li-ion (054-3124-0; sold separately) 2.0 Ah Li-ion (054-7553-4; sold separately) 4.0 Ah Li-ion (054-7557-6; sold separately) 5.0 Ah Li-ion (054-2434-8; sold separately)
Weight (without battery)	3 lb (1.35 kg)

\*Maximum battery voltage without workload; with workload nominal voltage is 18V.

Recommend using tool with Mastercraft® 20V max\* Lithium-Ion 4.0 Ah battery (054-7557-6; sold separately) and higher capacity batteries for optimal performance.

### SAFETY GUIDELINES:



#### WARNING!

Safety symbols in this instruction manual are used to flag possible dangers. The safety symbols and their explanations require your full understanding. The safety warnings do not, by themselves, eliminate any danger, nor are they substitutes for proper accident prevention measures.



#### WARNING!

This Safety Alert Symbol indicates caution, warning, or danger. Failure to obey a safety warning can result in serious injury to yourself or others. To reduce the risk of injury, fire, or electric shock, always follow the safety precautions.

### KNOW YOUR TOOL

To operate this tool, carefully read this instruction manual and all labels affixed to the cordless polisher before using. Keep this manual available for future reference.

### IMPORTANT

This tool should only be serviced by a qualified service technician. For more information, call the toll-free helpline at 1-800-689-9928.

### READ ALL INSTRUCTIONS THOROUGHLY

### SAVE THESE INSTRUCTIONS

### GENERAL POWER TOOL SAFETY WARNINGS



#### WARNING!

**Read all safety warnings, instructions, illustrations and specifications provided with this power tool.** Failure to follow all instructions listed below may result in electric shock, fire and/or serious injury.

### SAVE ALL WARNINGS AND INSTRUCTIONS FOR FUTURE REFERENCE

The term “power tool” in the warnings refers to your mains-operated (corded) power tool or battery-operated (cordless) power tool.

### WORK AREA SAFETY

- **Keep work area clean and well lit.** Cluttered or dark areas invite accidents.
- **Do not operate power tools in explosive atmospheres, such as in the presence of flammable liquids, gases or dust.** Power tools create sparks which may ignite the dust or fumes.
- **Keep children and bystanders away while operating a power tool.** Distractions can cause you to lose control.

## ELECTRICAL SAFETY

- **Power tool plugs must match the outlet. Never modify the plug in any way. Do not use any adapter plugs with earthed (grounded) power tools.** Unmodified plugs and matching outlets will reduce risk of electric shock.
- **Avoid body contact with earthed or grounded surfaces, such as pipes, radiators, ranges and refrigerators.** There is an increased risk of electric shock if your body is earthed or grounded.
- **Do not expose power tools to rain or wet conditions.** Water entering a power tool will increase the risk of electric shock.
- **Do not abuse the cord. Never use the cord for carrying, pulling or unplugging the power tool. Keep cord away from heat, oil, sharp edges or moving parts.** Damaged or entangled cords increase the risk of electric shock.
- **When operating a power tool outdoors, use an extension cord suitable for outdoor use.** Use of a cord suitable for outdoor use reduces the risk of electric shock.
- **If operating a power tool in a damp location is unavoidable, use a ground fault circuit interrupter (GFCI) protected supply.** Use of an GFCI reduces the risk of electric shock.

## PERSONAL SAFETY

- **Stay alert, watch what you are doing and use common sense when operating a power tool. Do not use a power tool while you are tired or under the influence of drugs, alcohol or medication.** A moment of inattention while operating power tools may result in serious personal injury.
- **Use personal protective equipment. Always wear eye protection.** Protective equipment such as a dust mask, non-skid safety shoes, hard hat or hearing protection used for appropriate conditions will reduce personal injuries.
- **Prevent unintentional starting. Ensure the switch is in the off-position before connecting to power source and/or battery pack, picking up or carrying the tool.** Carrying power tools with your finger on the switch or energising power tools that have the switch on invites accidents.
- **Remove any adjusting key or wrench before turning the power tool on.** A wrench or a key left attached to a rotating part of the power tool may result in personal injury.
- **Do not overreach. Keep proper footing and balance at all times.** This enables better control of the power tool in unexpected situations.
- **Dress properly. Do not wear loose clothing or jewellery. Keep your hair and clothing away from moving parts.** Loose clothes, jewellery or long hair can be caught in moving parts.
- **If devices are provided for the connection of dust extraction and collection facilities, ensure these are connected and properly used.** Use of dust collection can reduce dust-related hazards.
- **Do not let familiarity gained from frequent use of tools allow you to become complacent and ignore tool safety principles.** A careless action can cause severe injury within a fraction of a second.

### POWER TOOL USE AND CARE

- **Do not force the power tool. Use the correct power tool for your application.** The correct power tool will do the job better and safer at the rate for which it was designed.
- **Do not use the power tool if the switch does not turn it on and off.** Any power tool that cannot be controlled with the switch is dangerous and must be repaired.
- **Disconnect the plug from the power source and/or remove the battery pack, if detachable, from the power tool before making any adjustments, changing accessories, or storing power tools.** Such preventive safety measures reduce the risk of starting the power tool accidentally.
- **Store idle power tools out of the reach of children and do not allow persons unfamiliar with the power tool or these instructions to operate the power tool.** Power tools are dangerous in the hands of untrained users.
- **Maintain power tools and accessories. Check for misalignment or binding of moving parts, breakage of parts and any other condition that may affect the power tool's operation. If damaged, have the power tool repaired before use.** Many accidents are caused by poorly maintained power tools.
- **Keep cutting tools sharp and clean.** Properly maintained cutting tools with sharp cutting edges are less likely to bind and are easier to control.
- **Use the power tool, accessories and tool bits etc. in accordance with these instructions, taking into account the working conditions and the work to be performed.** Use of the power tool for operations different from those intended could result in a hazardous situation.
- **Keep handles and grasping surfaces dry, clean and free from oil and grease.** Slippery handles and grasping surfaces do not allow for safe handling and control of the tool in unexpected situations.

### BATTERY TOOL USE AND CARE

- **Recharge only with the charger specified by the manufacturer.** A charger that is suitable for one type of battery pack may create a risk of fire when used with another battery pack.
- **Use power tools only with specifically designated battery packs.** Use of any other battery packs may create a risk of injury and fire.
- **When battery pack is not in use, keep it away from other metal objects, like paper clips, coins, keys, nails, screws or other small metal objects, that can make a connection from one terminal to another.** Shorting the battery terminals together may cause burns or a fire.
- **Under abusive conditions, liquid may be ejected from the battery; avoid contact. If contact accidentally occurs, flush with water. If liquid contacts eyes, additionally seek medical help.** Liquid ejected from the battery may cause irritation or burns.
- **Do not use a battery pack or tool that is damaged or modified.** Damaged or modified batteries may exhibit unpredictable behaviour resulting in fire, explosion or risk of injury.
- **Do not expose a battery pack or tool to fire or excessive temperature.** Exposure to fire or

temperature above 130°C (266°F) may cause explosion.

- **Follow all charging instructions and do not charge the battery pack or tool outside the temperature range specified in the instructions.** Charging improperly or at temperatures outside the specified range may damage the battery and increase the risk of fire.

## SERVICE

- **Have your power tool serviced by a qualified repair person using only identical replacement parts.** This will ensure that the safety of the power tool is maintained.
- **Never service damaged battery packs.** Service of battery packs should only be performed by the manufacturer or authorized service providers.

## SAFETY GUIDELINES FOR CORDLESS POLISHER

- **Hold power tools by insulated gripping surfaces when performing an operation where the tool may contact hidden wiring or its own cord.** Contact with a “live” wire may make exposed metal parts of the power tool “live” and could give the operator an electric shock.
- **To reduce the risk of electric shock or damage to the charger and battery, use only the Mastercraft® batteries and charger listed.** Read the manuals of the charger and battery before using.

### BATTERY PACK

054-3124-0, 054-7553-4,  
054-7557-6, 054-2434-8

### CHARGER

054-3126-6, 054-7559-2

- **For your safety, do not attach the battery pack or try use it until the tool is completely assembled according to these instructions, and until you have read and understood this operators manual.**
- **For best results, your battery tool should be stored, used and charged in a location where the temperature is more than 5°C (41°F) but less than 40°C (104°F).** Do not store outside or in vehicles.
- **Always keep hands out of the path of polisher.** Avoid awkward hand positions where sudden slip could cause your hand to move into the polisher.
- **Secure the workpiece.** Use clamps or vice to hold the work when practical.
- **Make sure there are no nails or foreign objects in the part of the workpiece to be sanded.**
- **Protect your eyes, wear safety goggles.** The operation of any cutting tool can result in foreign objects being thrown into your eyes. This can result in severe eye damage. Before beginning any power tool operation, always wear safety goggles or safety glasses with side shields and a full face shield. When needed, a wide vision safety mask should be used over eyeglasses or standard safety glasses with side shields. Glasses have only impact-resistant lenses and ARE NOT safety glasses. For your own protection, make sure your safety glasses or goggles comply with the ANSI Z87.1 Safety Standard.



- **The label on your tool may include the following symbols. The symbols and their definitions are as follows:**

V ..... Volts

A ..... Amperes

Hz ..... Hertz

W ..... Watts

min ..... Minutes

~ ..... Alternating current

— or d.c. .... Direct current

n<sub>0</sub> ..... No-load speed



..... Class II Construction

.../min ..... Revolutions or reciprocation per minute



..... Grounding terminal

BPM ..... Beats per minute

RPM ..... Revolutions per minute



..... WARNING – To reduce the risk of injury, user must read instruction manual.



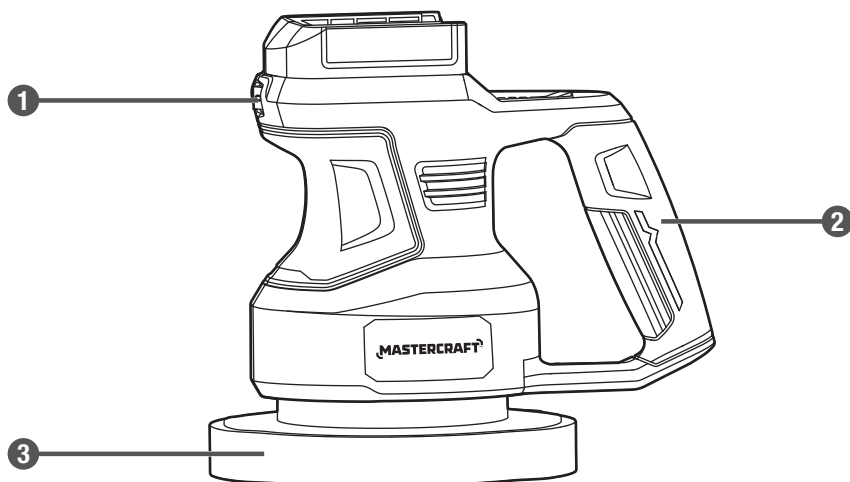
..... WARNING – To reduce the risk of injury always wear eye protection.



..... WARNING – To reduce the risk of injury always wear ear protection.

**PACKAGE CONTENTS:**

Cordless polisher, 1 fabric bonnet, 1 wool bonnet, and instruction manual.

**KEY PARTS DIAGRAM**

No.	Description
1	Switch
2	Handle

No.	Description
3	Base plate

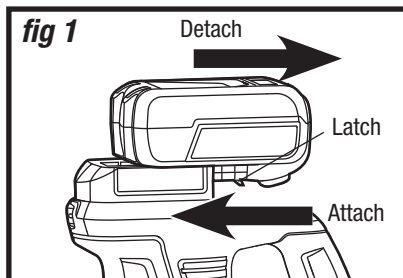
**WARNING!**

- Remove the cordless polisher from the package and examine it carefully. Do not discard the carton or any packaging material until all parts have been examined.
- If any part of the polisher is missing or damaged, do not use or attach a battery to the tool until the part has been repaired or replaced. Failure to heed this warning could result in serious injury.

### ASSEMBLY INSTRUCTIONS

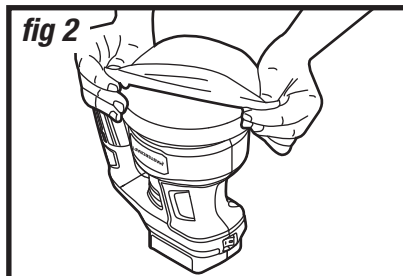
#### TO ATTACH BATTERY PACK (fig 1)

1. Make sure that the switch is in the OFF position.
2. Align the raised portion on the battery pack with the groove on the bottom of the tool, then slide the battery pack onto the tool.
3. Make sure that the battery pack latches securely.



#### TO DETACH BATTERY PACK (fig 1)

Make sure that the switch is in the OFF position. Depress the battery-release button located on the front of the battery pack, and pull out the battery pack from the polisher.

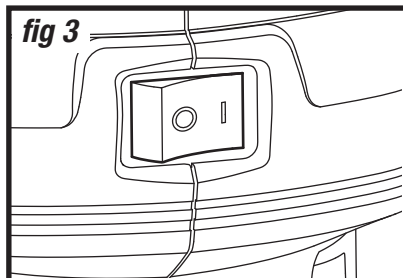


#### TO ATTACH/REMOVE THE BONNET (fig 2)

1. Detach the battery pack from the polisher.
2. Stretch the edge of the bonnet, and use it to cover the base plate as shown in fig 2.
3. Make sure the edge of the bonnet is covering the plastic base plate.
4. To remove bonnet, stretch the edge of the bonnet and remove it from the polisher.

#### TO TURN ON/OFF THE POLISHER (fig 3)

1. Attach the battery pack.
2. To turn on the tool, press the switch to "I" position. To turn off the tool, press the switch to "O" position.



**NOTICE:** After you attach the bonnet, insert the battery pack and turn on the polisher for several minutes to ensure that the bonnet is attached tightly.

## OPERATING INSTRUCTIONS

### APPLICATION

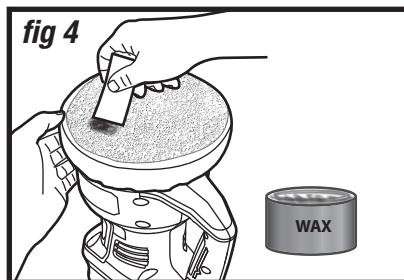
You may use this tool for the purposes listed below:

Polishing/buffing cars, boats, personal watercraft, RVs, motorcycles, hardwood floors and large furniture.

For best results, the surface should be clean and dry. Most high-gloss surfaces can be cleaned with a mild soap and water solution and then dried thoroughly before polishing.

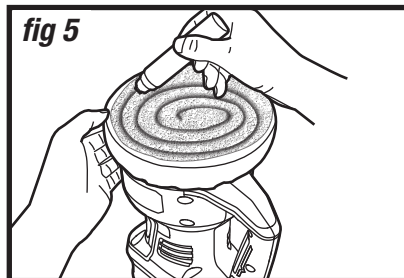
#### APPLICATION OF PASTE POLISH (fig 4)

Use a putty knife or an other flat, blunt object to apply approximately one rounded teaspoon of polish onto the bonnet. Evenly spread the paste over the entire surface of the bonnet. Do not apply the polish directly to the surface to be polished.



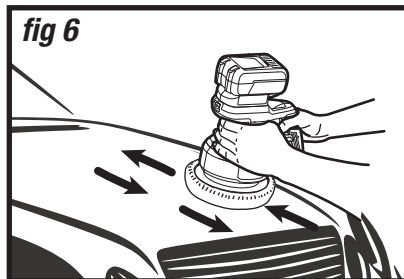
#### APPLICATION OF LIQUID POLISH (fig 5)

Apply a small circle of liquid around the centre of the bonnet, followed by two more rings, each slightly larger than the previous one. After the first application, the bonnet will not absorb as much polish. Apply only two rings of polish to the bonnet for subsequent applications using half of the initial quantity. Do not apply the polish directly to the surface being polished.



Always start and stop the polisher on or against the surface to be polished. Grip the handle, being sure to hold the polishing surface parallel to the work surface. Do not press down heavily. This will slow down the motor and could damage it (fig 6).

Slowly move the polisher in an overlapping pattern on the surface to be polished. Turn off the polisher and wait for rotation to stop before lifting the bonnet from the work surface.



## MAINTENANCE

### BEFORE EACH USE:

1. Inspect the cordless polisher, the switch, and the accessories for damage.
2. Check for damaged, missing, or worn parts.
3. Check for loose screws, misalignment or binding of moving parts, or any other condition that may affect the operation.
4. If abnormal vibration or noise occurs, turn the tool off immediately, and have the problem corrected before further use.

The foam pad will retain its original shape and dimensions. Allow it to dry completely after each use.

Make sure to remove the bonnets, wash them, and store them separately.

The polisher should be stored with the pad facing up in order to extend pad life and retain its shape. Be careful not to use too much polish at one time. If the pad becomes saturated, it will not last as long.



### WARNING!

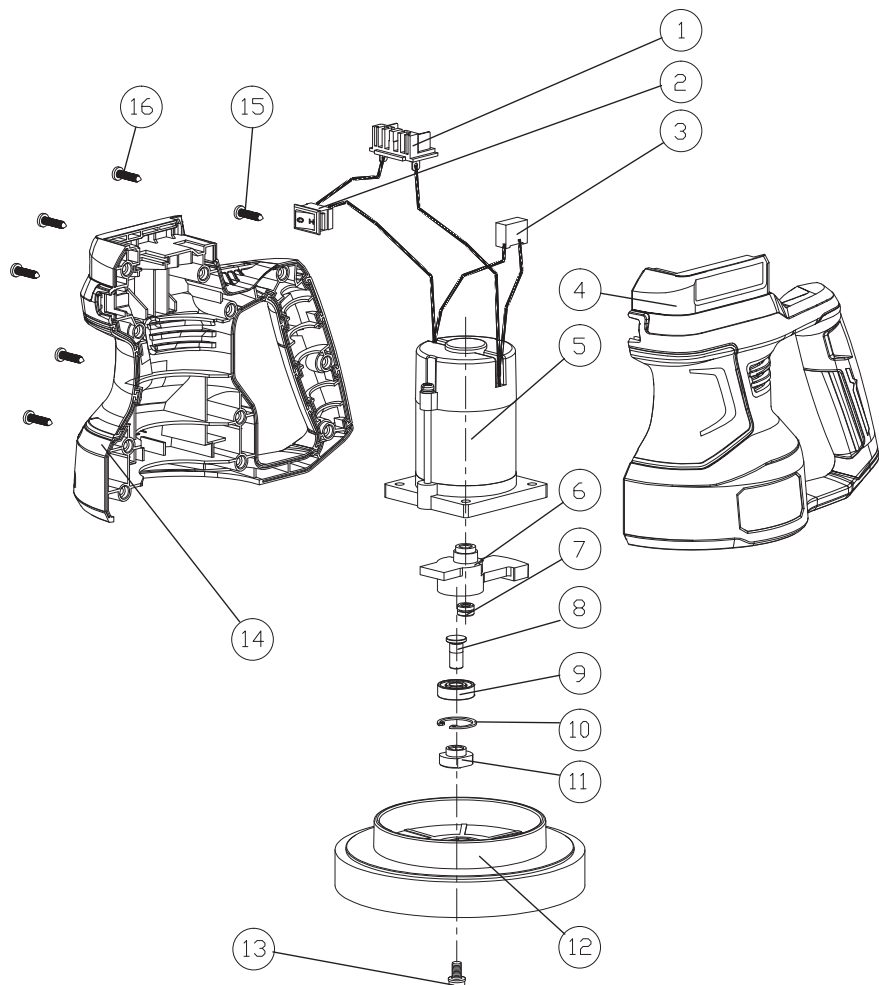
- To avoid accidents, always disconnect the tool from the battery pack before cleaning or performing any maintenance. The tool may be cleaned most effectively with compressed, dry air. Always wear safety goggles when cleaning tools with compressed air.
- Do not allow brake fluids, gasoline, petroleum-based products, penetrating oil, etc., to come into contact with plastic parts. These substances contain chemicals that can damage, weaken, or destroy plastic.
- When servicing, use only identical replacement parts. The use of any other parts may create a hazard or cause damage to the product.
- Use only accessories that are recommended for this tool. Accessories that may be suitable for one tool may become hazardous when used with another tool.
- To ensure safety and reliability, all repairs should be performed by a qualified service technician.

**TROUBLESHOOTING**

Problem	Possible Causes	Solution
The polisher does not start.	The battery is depleted.	Charge the battery pack.
The bonnet dropped off from the base plate.	There is too much wax on the bonnet. It is too heavy.	Wash the bonnet or replace with a new bonnet.

If the problem remains unsolved after performing the checks described above, call the toll-free helpline at 1-800-689-9928.

## EXPLODED VIEW



No.	Part No.	Description
1	0547285201	Battery connector
2	0547285202	Switch
3	0547285203	Capacitor
4	0547285204	Left housing
5	0547285205	Motor
6	0547285206	Eccentric block
7	0547285207	Nut
8	0547285208	Connecting shaft

No.	Part No.	Description
9	0547285209	Bearing
10	0547285210	Circlip
11	0547285211	Shaft sleeve
12	0547285212	Base
13	0547285213	Screw
14	0547285215	Right housing
15	0547285216	Screw
16	0547285217	Screw

If any parts are missing or damaged, or if you have any questions, please call the toll-free helpline at 1-800-689-9928.



This Mastercraft product is guaranteed for a period of **3 years from the date of original retail purchase** against defects in workmanship and materials, except for the following components:

- a) Component A: Batteries, chargers and carrying case, which are guaranteed for a period of 2 years from the date of original retail purchase against defects in workmanship and materials;
- b) Component B: Accessories, which are guaranteed for a period of 1 year from the date of original retail purchase against defects in workmanship and materials.

Subject to the conditions and limitations described below, this product, if returned to us with proof of purchase within the stated warranty period and if covered under this warranty, will be repaired or replaced (with the same model, or one of equal value or specification), at our option. We will bear the cost of any repair or replacement and any costs of labour relating thereto.

### **These warranties are subject to the following conditions and limitations:**

- a) a bill of sale verifying the purchase and purchase date must be provided;
- b) this warranty will not apply to any product or part thereof which is worn or broken or which has become inoperative due to abuse, misuse, accidental damage, neglect or lack of proper installation, operation or maintenance (as outlined in the applicable owner's manual or operating instructions) or which is being used for industrial, professional, commercial or rental purposes;
- c) this warranty will not apply to normal wear and tear or to expendable parts or accessories that may be supplied with the product that are expected to become inoperative or unusable after a reasonable period of use;
- d) this warranty will not apply to routine maintenance and consumable items such as, but not limited to, fuel, lubricants, vacuum bags, blades, belts, sandpaper, bits, fluids, tune-ups or adjustments;
- e) this warranty will not apply where damage is caused by repairs made or attempted by others (i.e. persons not authorized by the manufacturer);
- f) this warranty will not apply to any product that was sold to the original purchaser as a reconditioned or refurbished product (unless otherwise specified in writing);
- g) this warranty will not apply to any product or part thereof if any part from another manufacturer is installed therein or any repairs or alterations have been made or attempted by unauthorized persons;

- h) this warranty will not apply to normal deterioration of the exterior finish, such as, but not limited to, scratches, dents, paint chips, or to any corrosion or discolouring by heat, abrasive and chemical cleaners; and
- i) this warranty will not apply to component parts sold by and identified as the product of another company, which shall be covered under the product manufacturer's warranty, if any.

### **Additional Limitations**

This warranty applies only to the original purchaser and may not be transferred. Neither the retailer nor the manufacturer shall be liable for any other expense, loss or damage, including, without limitation, any indirect, incidental, consequential or exemplary damages arising in connection with the sale, use or inability to use this product.

### **Notice to Consumer**

This warranty gives you specific legal rights, and you may have other rights, which may vary from province to province. The provisions contained in this warranty are not intended to limit, modify, take away from, disclaim or exclude any statutory warranties set forth in any applicable provincial or federal legislation.

Made in China

Imported by

Mastercraft Canada Toronto, Canada M4S 2B8



