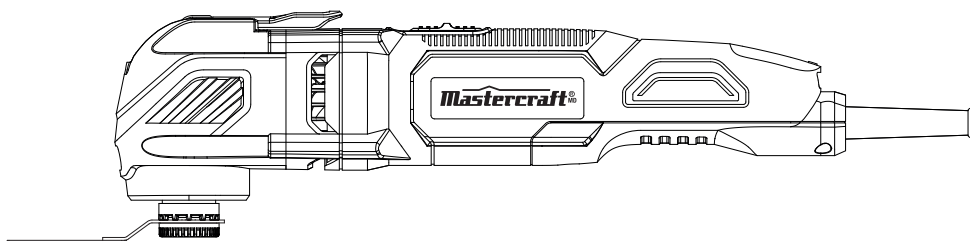


model no. 054-7281-0

**Mastercraft**<sup>®</sup> MD

## CORDED MULTI-CRAFTER KIT



### **IMPORTANT:**

Please read this manual carefully before using this tool and save it for reference.

**INSTRUCTION  
MANUAL**



**TABLE OF CONTENTS**

Technical specifications	4
General power tool safety warnings	5
Symbols	8
Key parts diagram	9
Accessories	10
Parts list	11
Operating instructions	13
Working hints for your tool	17
Maintain tools with care	18
Warranty	19

**NOTE:**

If any parts are missing or damaged, or if you have any questions, please call our toll-free helpline at 1-800-689-9928.


**SAVE THESE INSTRUCTIONS**

This manual contains important safety and operating instructions. Read all instructions and follow them with use of this product.



## TECHNICAL SPECIFICATIONS

Type Designation PMF300GU (PM-designation of machinery, representative of multi-tool)

Voltage:	120V, 60 Hz AC
Amps:	2.5A
Oscillations speed:	11,000–20,000 OPM (no load)
Oscillations angle:	3.2°
Protection class:	Double Insulated  /II
Machine weight:	3 lb 8 oz (1.6 kg)

## WORK AREA SAFETY

- **Keep work area clean and well lit.** *Cluttered or dark areas invite accidents.*
- **Do not operate power tools in explosive atmospheres, such as in the presence of flammable liquids, gases or dust.** *Power tools create sparks which may ignite the dust or fumes.*
- **Keep children and bystanders away while operating a power tool.** *Distractions can cause you to lose control.*

## ELECTRICAL SAFETY

- **Power tool plugs must match the outlet. Never modify the plug in any way. Do not use any adapter plugs with earthed (grounded) power tools.** *Unmodified plugs and matching outlets will reduce risk of electric shock.*
- **Avoid body contact with earthed or grounded surfaces, such as pipes, radiators, ranges and refrigerators.** *There is an increased risk of electric shock if your body is earthed or grounded.*
- **Do not expose power tools to rain or wet conditions.** *Water entering a power tool will increase the risk of electric shock.*
- **Do not abuse the cord. Never use the cord for carrying, pulling or unplugging the power tool. Keep cord away from heat, oil, sharp edges or moving parts.** *Damaged or entangled cords increase the risk of electric shock.*
- **When operating a power tool outdoors, use an extension cord suitable for outdoor use.** *Use of a cord suitable for outdoor use reduces the risk of electric shock.*



### WARNING!

Some dust created by power sanding, sawing, grinding, drilling and other construction activities contains chemicals known to the State of California to cause cancer, birth defects or other reproductive harm. Some examples of these chemicals are:

- Lead from lead-based paints;
- Crystalline silica from bricks and cement and other masonry products;
- Arsenic and chromium from chemically-treated lumber.

Your risk from these exposures varies, depending on how often you do this type of work. To reduce your exposure to these chemicals: work in a well ventilated area, and work with approved safety equipment, such as those dust masks that are specially designed to filter out microscopic particles.



### WARNING!

This product can expose you to chemicals including lead and Di(2-ethylhexyl)phthalate (DEHP) which are known to the State of California to cause cancer and birth defects or other reproductive harm. For more information go to [www.P65Warnings.ca.gov](http://www.P65Warnings.ca.gov).



### WARNING!

**Read all safety warnings, instructions, illustrations and specifications provided with this power tool.** *Failure to follow all instructions listed below may result in electric shock, fire and/or serious injury.*

**Save all warnings and instructions for future reference.**

*The term power tool in the warnings refers to your electric (corded) power tool or battery-operated (cordless) power tool.*

- If operating a power tool in a damp location is unavoidable, use a residual current device (RCD) protected supply. Use of an RCD reduces the risk of electric shock.

## PERSONAL SAFETY

- Stay alert, watch what you are doing and use common sense when operating a power tool. Do not use a power tool while you are tired or under the influence of drugs, alcohol or medication. A moment of inattention while operating power tools may result in serious personal injury.
- Use personal protective equipment. Always wear eye protection. Protective equipment such as dust mask, non-skid safety shoes, hard hat, or hearing protection used for appropriate conditions will reduce personal injuries.
- Prevent unintentional starting. Ensure the switch is in the off-position before connecting to power source and/or battery pack, picking up or carrying the tool. Carrying power tools with your finger on the switch or energising power tools that have the switch on invites accidents.
- Remove any adjusting key or wrench before turning the power tool on. A wrench or a key left attached to a rotating part of the power tool may result in personal injury.
- Do not overreach. Keep proper footing and balance at all times. This enables better control of the power tool in unexpected situations.
- Dress properly. Do not wear loose clothing or jewellery. Keep your hair and clothing away from moving parts. Loose clothes, jewellery or long hair can be caught in moving parts.
- If devices are provided for the connection of dust extraction and collection facilities, ensure these are connected and properly used. Use of dust collection can reduce dust-related hazards.
- Do not let familiarity gained from frequent use of tools allow you to become complacent and ignore tool safety principles. A careless action can cause severe injury within a fraction of a second.

## POWER TOOL USE AND CARE

- Do not force the power tool. Use the correct power tool for your application. The correct power tool will do the job better and safer at the rate for which it was designed.
- Do not use the power tool if the switch does not turn it on and off. Any power tool that cannot be controlled with the switch is dangerous and must be repaired.
- Disconnect the plug from the power source and/or remove the battery pack, if detachable, from the power tool before making any adjustments, changing accessories, or storing power tools. Such preventive safety measures reduce the risk of starting the power tool accidentally.
- Store idle power tools out of the reach of children and do not allow persons unfamiliar with the power tool or these instructions to operate the power tool. Power tools are dangerous in the hands of untrained users.
- Maintain power tools and accessories. Check for misalignment or binding of moving parts, breakage of parts and any other condition that may affect the power tool's operation. If damaged, have the power tool repaired before use. Many accidents are caused by poorly maintained power tools.
- Keep cutting tools sharp and clean. Properly maintained cutting tools with sharp cutting edges are less likely to bind and are easier to control.
- Use the power tool, accessories and tool bits etc. in accordance with these instructions, taking into account the working conditions and the work to be performed. Use of the power tool for operations different from those intended could result in a hazardous situation.

- **Keep handles and grasping surfaces dry, clean and free from oil and grease.** *Slippery handles and grasping surfaces do not allow for safe handling and control of the tool in unexpected situations.*

## SERVICE

- **Have your power tool serviced by a qualified repair person using only identical replacement parts.** *This will ensure that the safety of the power tool is maintained.*

## SAFETY INSTRUCTION FOR CUTTING

- **Hold the power tool by insulated gripping surfaces, when performing an operation where the cutting accessory may contact hidden wiring or its own cord.** *Cutting accessory contacting a "live" wire may make exposed metal parts of the power tool "live" and could give the operator an electric shock.*
- **Use clamps or another practical way to secure and support the workpiece to a stable platform.** *Holding the work by hand or against your body leaves it unstable and may lead to loss of control.*

**SYMBOLS**

To reduce the risk of injury, the user must read the instruction manual.



Double insulation



Warning



Wear ear protection



Wear eye protection



Wear a dust mask

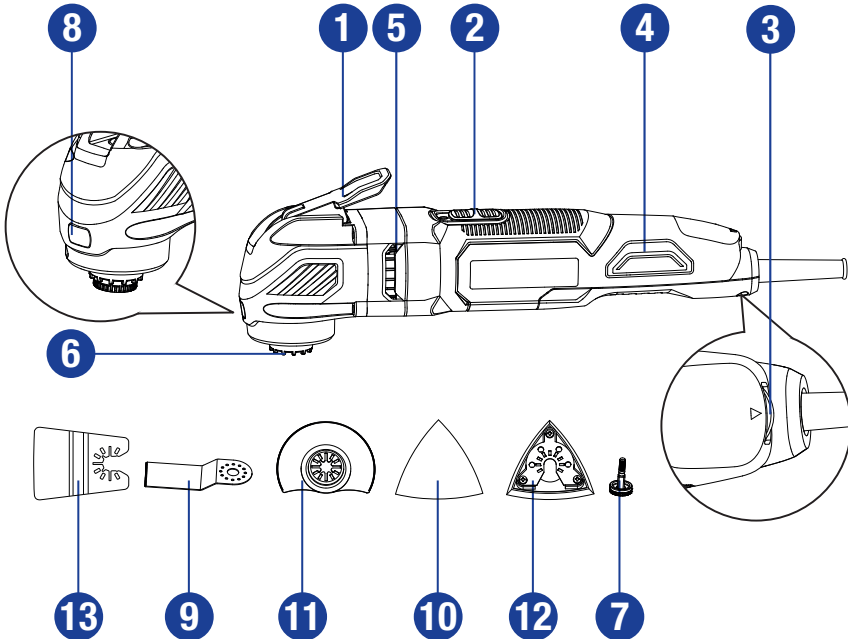


Don't use in the rain



## KEY PARTS DIAGRAM

No.	Description	No.	Description
1.	Tool-less blade change lever	8.	LED work light
2.	On/off switch	9.	Flush-cutting blade
3.	Variable speed dial	10.	Sandpaper
4.	Grip area	11.	Segmented saw blade
5.	Venting slots	12.	Detail sanding base
6.	Accessory interface	13.	Flexible scraping blade
7.	Flange		



### ACCESSORIES

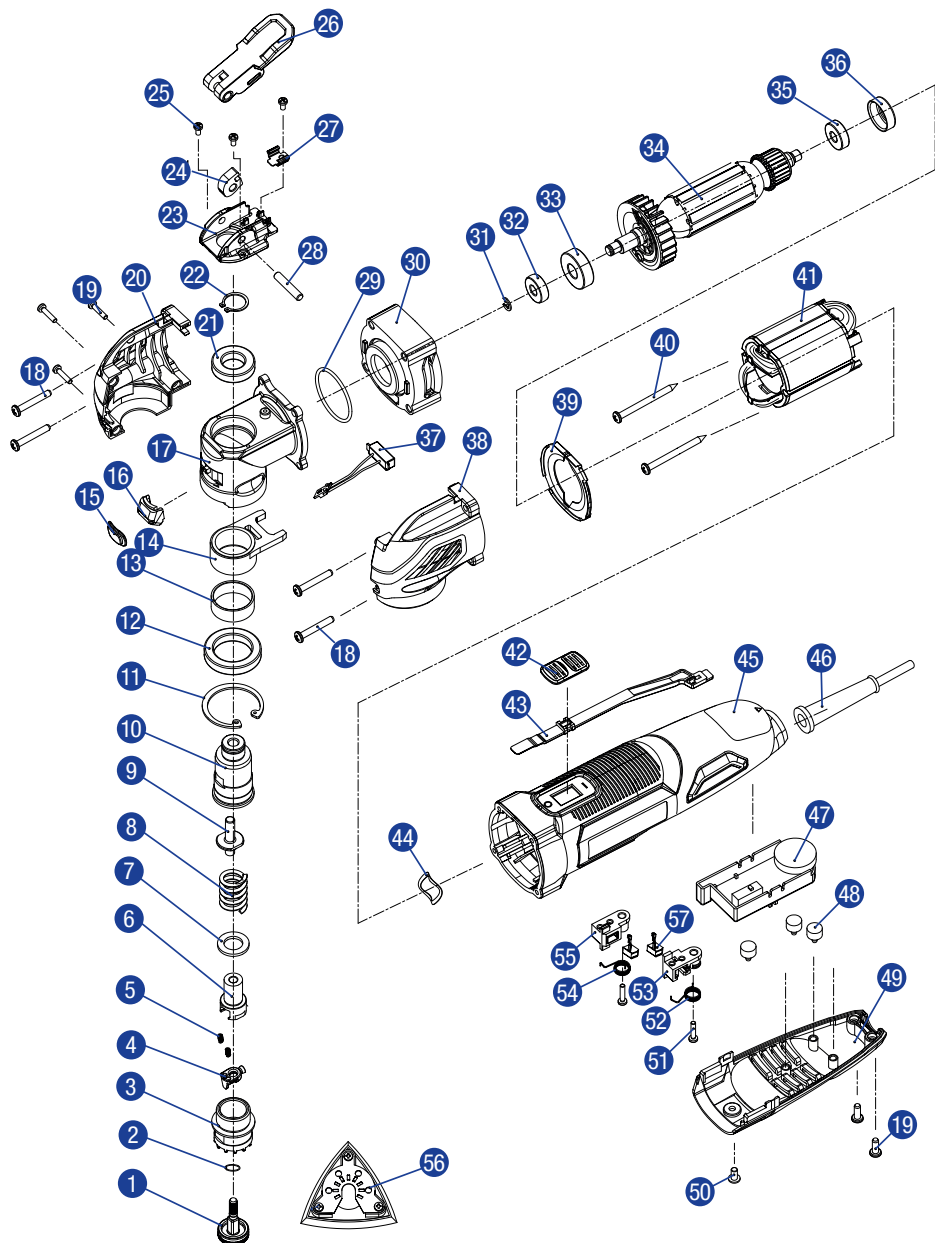
Detail sanding base	1
3 1/8" segmented saw blade	1
1 3/8" flush-cutting blade	2
Flexible scraping blade	1
Sandpaper (80/120/180 grit)	15
Nylon tote	1

We recommend that you purchase your accessories from the same store that sold you the tool. Refer to the accessory packaging for further details. Store personnel can assist you and offer advice.

## PARTS LIST

No.	Description	Qty.
1	Flange assembly	1
2	O-rings	1
3	Revolve shaft	1
4	Clutch lining	1
5	Compression spring	2
6	Orientation sleeve	1
7	Washer	1
8	Locked spring	1
9	Linkage	1
10	Spindle	1
11	Retaining ring	1
12	Ball bearing race	1
13	Shaft cover	1
14	Pendulum fork	1
15	Light cover	1
16	Light socket	1
17	Aluminum front housing	1
18	Screw	4
19	Screw	5
20	Right cover	1
21	Ball bearing race	1
22	Retaining ring	1
23	Base holder	1
24	Cam	1
25	Screw	3
26	Spanner	1
27	Lock plate	1
28	Cylindrical pin	1
29	O-rings	1
30	Bracket support	1

No.	Description	Qty.
31	Retaining ring	1
32	Ball bearing race	1
33	Bearing	1
34	Rotor	1
35	Bearing	1
36	Magnet ring	1
37	Transistor	1
38	Left cover	1
39	Wind baffle ring	1
40	Screw	2
41	Stator	1
42	Switch trigger	1
43	Switch lever	1
44	Waveform ring	1
45	Housing	1
46	Power cord protection cover	1
47	Speed adjustment knob	1
48	Rubber nails	1
49	Back cover	1
50	Screw	1
51	Screw	2
52	Right torsional spring	1
53	Right brush box	1
54	Left torsional spring	1
55	Left brush box	1
56	Metal detail sanding base	1
57	Brushes (one pair)	1



## 1. MOUNTING ACCESSORIES

**Caution:** For all work or when changing accessories, always wear protective gloves. Avoid risk of injury from the sharp edges of the accessories. Accessories can become very hot while working, presenting danger of burns! **Make sure the tool is unplugged prior to changing accessories.**

**Warning:** To reduce the risk of injury, do not let the sharp side of the accessory face back toward the user's hand.

### TO CHANGE THE ACCESSORY

The tool-less blade change lever allows you to change the accessories without using an Allen key.

(1a) For accessories with an open-ended connection, flip the tool-less blade change lever (1) forward to the open position to loosen the flange (7). Remove the flush-cutting blade. (See Fig. A)

(1b) For accessories with a closed-ended connection, flip the tool-less blade change lever (1) forward to the open position and completely remove the flange (7). Remove the flush-cutting blade. (See Fig. B1, B2)

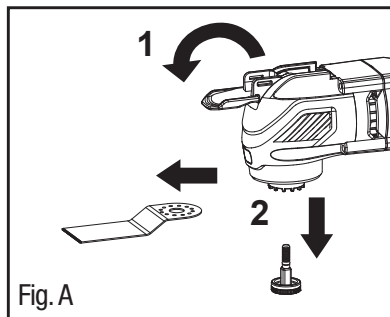


Fig. A

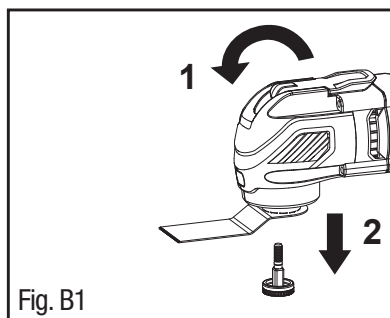


Fig. B1

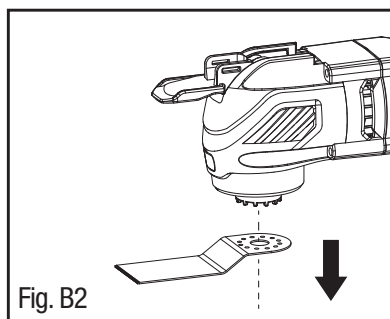
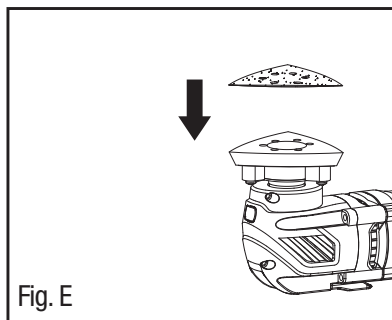
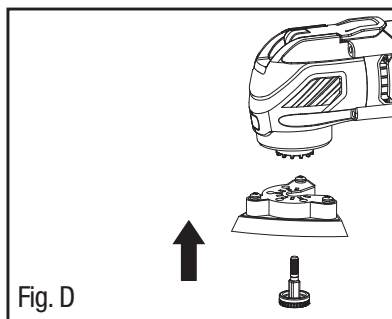
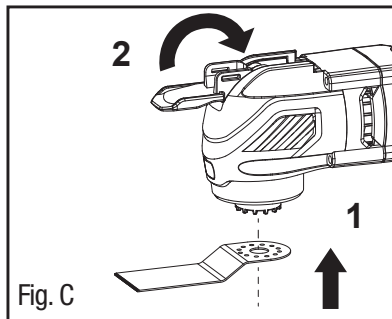


Fig. B2



**NOTE:** Before using the tool, read the instruction manual carefully.



2) Insert the flush-cutting blade onto the accessory interface (6), (if necessary, re-insert the flange) then press down on the flange with a finger to keep the blade temporarily secure. Flip the lever (1) back down to the seated position to secure the accessory. (See Fig. C)

## MOUNTING/CHANGING THE SANDPAPER (See Fig. D, E)

2a) Flip the tool-less blade change lever (1) forward to the open position to loosen the flange (7). Remove the flush-cutting blade. Insert the detail sanding base (12) onto the accessory interface (6), (if necessary, re-insert the flange) then press down the flange with a finger to keep the accessory temporarily secure. Flip the lever (1) back down to the seated position to secure the accessory.

2b) Place the sandpaper directly onto the base plate and align the holes of the perforated sandpaper with the slots of the perforated detail sanding base. Press the sheet onto the detail sanding base. Firmly press the multi-crafter with the installed sandpaper against a flat surface and briefly switch the power tool on. This provides for good adhesion and prevents premature wear. If one point has become worn after use, pull off the sandpaper, turn it 120°, and re-install.

## 2. OPERATING THE ON/OFF SWITCH (See Fig. F)

——Switching the power tool ON:

Slide the switch forward.

——Switching the power tool OFF:

Slide the switch backward.

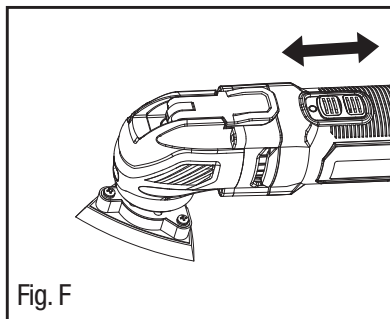


Fig. F

## 3. USING THE VARIABLE SPEED DIAL (See Fig. G)

Select the oscillation frequency (speed) while the motor is running.

The variable speed dial can be used to set the optimum oscillating frequency according to the accessories used and the respective application.

High oscillation frequency:

Sanding, sawing, rasping and polishing stone and metal.

Low oscillation frequency:

Scraping, polishing varnishes.

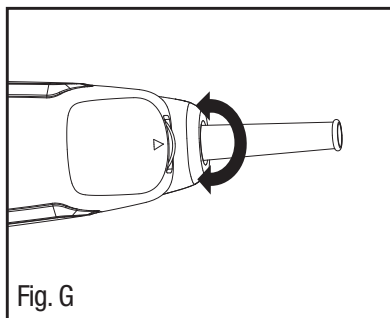


Fig. G

## 4. LED WORK LIGHT (See Fig. H)

The LED work light allows you to keep a clear view under less illuminated circumstances. To turn on the light, simply press the on/off switch. When you release the on/off switch, the light will turn off.

## 5. ELECTRONIC FEEDBACK

Your tool is equipped with an internal electronic feedback system, which helps to keep the preselected speed virtually constant between no-load and load conditions.

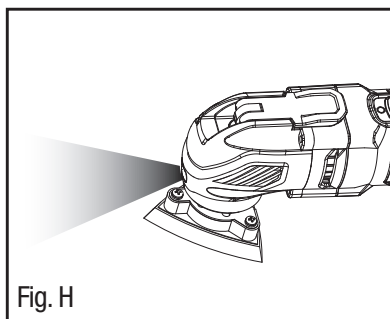







Fig. H

## APPLICATION

**Warning:** The saw teeth are very sharp. Do not touch during mounting and application.  
The workpiece must be clamped tightly before it is cut.

Function	Accessory	Name	Application
Sawing		Flush-cutting blade	Wood, plastic, fibreglass, nails, non-ferrous metals, thin sheet metal, hardened fillers
Sawing		Segmented saw blade	Thin wood, plastic, fibreglass, non-ferrous metals, thin sheet metal, hardened fillers, window glazing
Sanding		Detail sanding base	Wood, plastic, hardened fillers
Removing grout		Diamond coated segmented saw blade	Ceramic and stone tile, backerboard
Scraping		Flexible scraping blade	Old paint, hardened adhesives, caulk, carpet

We recommend that you purchase your accessories from the same store that sold you the tool. Refer to the accessory packaging for further details. Store personnel can assist you and offer advice.

**NOTE:** When plunging and sawing, use a slight pendulum motion, to allow sufficient chip removal.  
The saw blade lasts longer if the wear is distributed evenly. To ensure an even distribution, loosen the saw blade, rotate it and retighten firmly.  
Cut/sand with constant movement and light pressure.  
Heavy pressure does not increase the cut/removal rate – the accessory merely wears faster.



## **WORKING HINTS FOR YOUR TOOL**

If your power tool becomes too hot, especially when used at low speed, set the speed to maximum and run it with no load for 2–3 minutes to cool the motor. Avoid prolonged usage at very low speeds. Always keep the blade sharp.

Always ensure the workpiece is firmly held or clamped to prevent movement.

Any movement of the material may affect the quality of the cutting or sanding finish.

Start your tool before working and turn it off only after you stop working.

Do not start sanding without having the sandpaper fitted.

Do not allow the sandpaper to wear away; it will damage the detail sanding base. The guarantee does not cover wear and tear to the detail sanding base.

Use coarse grit paper to sand rough surfaces, medium grit for smooth surfaces and fine grit for finishing surfaces. If necessary, first make a test run on scrap material.

Excessive force will reduce the working efficiency and cause motor overload.

Replacing the accessory regularly will maintain optimum working efficiency.

**MAINTAIN TOOLS WITH CARE**

Remove the plug from the socket before carrying out any adjustment, servicing or maintenance.

Your power tool requires no additional lubrication or maintenance. There are no user serviceable parts in your power tool. Never use water or chemical cleaners to clean your power tool. Wipe clean with a dry cloth. Always store your power tool in a dry place. Keep the motor ventilation slots clean. Keep all working controls free of dust. Occasionally you may see sparks through the ventilation slots. This is normal and will not damage your power tool.

If the supply cord is damaged, it must be replaced by the manufacturer, its service agent or similarly qualified persons in order to avoid a hazard.

This Mastercraft product is guaranteed for a period of 3 years from the date of original retail purchase against defects in workmanship and materials, except for the following components:

- a) Component A: Batteries, chargers and carrying case, which are guaranteed for a period of 2 years from the date of original retail purchase against defects in workmanship and materials;
- b) Component B: Accessories, which are guaranteed for a period of 1-year from the date of original retail purchase against defects in workmanship and materials.

Subject to the conditions and limitations described below, this product, if returned to us with proof of purchase within the stated warranty period and if covered under this warranty, will be repaired or replaced (with the same model, or one of equal value or specification), at our option. We will bear the cost of any repair or replacement and any costs of labour relating thereto.



**These warranties are subject to the following conditions and limitations:**

- a) a bill of sale verifying the purchase and purchase date must be provided;
- b) this warranty will not apply to any product or part thereof which is worn or broken or which has become inoperative due to abuse, misuse, accidental damage, neglect or lack of proper installation, operation or maintenance (as outlined in the applicable owner's manual or operating instructions) or which is being used for industrial, professional, commercial or rental purposes;
- c) this warranty will not apply to normal wear and tear or to expendable parts or accessories that may be supplied with the product that are expected to become inoperative or unusable after a reasonable period of use;
- d) this warranty will not apply to routine maintenance and consumable items such as, but not limited to, fuel, lubricants, vacuum bags, blades, belts, sandpaper, bits, fluids, tune-ups or adjustments;
- e) this warranty will not apply where damage is caused by repairs made or attempted by others (i.e. persons not authorized by the manufacturer);
- f) this warranty will not apply to any product that was sold to the original purchaser as a reconditioned or refurbished product (unless otherwise specified in writing);
- g) this warranty will not apply to any product or part thereof if any part from another manufacturer is installed therein or any repairs or alterations have been made or attempted by unauthorized persons;
- h) this warranty will not apply to normal deterioration of the exterior finish, such as, but not limited to, scratches, dents, paint chips, or to any corrosion or discolouring by heat, abrasive and chemical cleaners; and
- i) this warranty will not apply to component parts sold by and identified as the product of another company, which shall be covered under the product manufacturer's warranty, if any.

**Additional Limitations**

This warranty applies only to the original purchaser and may not be transferred. Neither the retailer nor the manufacturer shall be liable for any other expense, loss or damage, including, without limitation, any indirect, incidental, consequential or exemplary damages arising in connection with the sale, use or inability to use this product.

**Notice to Consumer**

This warranty gives you specific legal rights, and you may have other rights, which may vary from province to province. The provisions contained in this warranty are not intended to limit, modify, take away from, disclaim or exclude any statutory warranties set forth in any applicable provincial or federal legislation.