

MAXIMUM[®]

Corded 1/4-Sheet Orbit Sander



Model No. 054-7276-4

IMPORTANT:

Please read this manual carefully before using this product, and save it for reference.

**INSTRUCTION
MANUAL**

TABLE OF CONTENTS

Technical Specifications	4
Safety Guidelines	5
Key Parts Diagram	9
Important information	10
Operating Instructions	11
Maintenance	16
Troubleshooting	17
Parts List	18
Warranty	20

NOTE: If any parts are missing or damaged, or if you have any questions, please call our toll-free helpline at 1-888-670-6682.



SAVE THESE INSTRUCTIONS

- This manual contains important safety and operating instructions. Read all instructions and follow them when using this product.

TECHNICAL SPECIFICATIONS

Rated Input	120V, 60 Hz, 2.4A
No-load Speed	14,000 OPM
Weight (with dust canister)	3 lb 8 oz (1.6 kg)

SAFETY GUIDELINES



WARNING!

Safety symbols in this instruction manual are used to flag possible dangers. The safety symbols and their explanations require your full understanding. The safety warnings do not, by themselves, eliminate any danger, nor are they substitutes for proper accident prevention measures.



WARNING!

This Safety Alert Symbol indicates caution, warning, or danger. Failure to obey a safety warning can result in serious injury to yourself or others. To reduce the risk of injury, fire, or electric shock, always follow the safety precautions.

KNOW YOUR TOOL

To operate this tool, carefully read this instruction manual and all labels affixed to the corded 1/4-sheet orbit sander before using. Keep this manual available for future reference.

IMPORTANT

This tool should only be serviced by a qualified service technician. For more information, call the toll-free helpline at 1-888-670-6682.

READ ALL INSTRUCTIONS THOROUGHLY

SAVE THESE INSTRUCTIONS

GENERAL POWER TOOL SAFETY WARNINGS



WARNING!

Read all safety warnings and instructions. Failure to follow the warnings and instructions may result in electric shock, fire and/or serious injury

SAVE ALL WARNINGS AND INSTRUCTIONS FOR FUTURE REFERENCE.

The term “power tool” in the warnings refers to your mains-operated (corded) power tool or battery-operated (cordless) power tool.

WORK AREA SAFETY

- Keep the work area clean and well lit. Cluttered or dark areas invite accidents.
- Do not operate power tools in explosive atmospheres, such as in the presence of flammable liquids, gases or dust. Power tools create sparks, which may ignite the dust or fumes.
- Keep children and bystanders away while operating a power tool. Distractions can cause you to lose control.

ELECTRICAL SAFETY

- **Power tool plugs must match the outlet. Never modify the plug in any way. Do not use any adapter plugs with earthed (grounded) power tools.** Unmodified plugs and matching outlets will reduce risk of electric shock.
- **Avoid body contact with earthed or grounded surfaces, such as pipes, radiators, ranges and refrigerators.** There is an increased risk of electric shock if your body is earthed or grounded.
- **Do not expose power tools to rain or wet conditions.** Water entering a power tool will increase the risk of electric shock.
- **Do not abuse the cord. Never use the cord for carrying, pulling or unplugging the power tool. Keep cord away from heat, oil, sharp edges or moving parts.** Damaged or entangled cords increase the risk of electric shock.
- **When operating a power tool outdoors, use an extension cord suitable for outdoor use.** Use of a cord suitable for outdoor use reduces the risk of electric shock.
- **If operating a power tool in a damp location is unavoidable, use a ground-fault circuit interrupter (GFCI) protected supply.** Use of a GFCI reduces the risk of electric shock.

PERSONAL SAFETY

- **Stay alert, watch what you are doing and use common sense when operating a power tool. Do not use a power tool while you are tired or under the influence of drugs, alcohol or medication.** A moment of inattention while operating power tools may result in serious personal injury.
- **Use personal protective equipment. Always wear eye protection.** Protective equipment such as dust mask, non-skid safety shoes, hard hat, or hearing protection used for appropriate conditions will reduce personal injuries.
- **Prevent unintentional starting. Ensure the switch is in the off-position before connecting to power source and/or battery pack, picking up or carrying the tool.** Carrying power tools with your finger on the switch or energising power tools that have the switch on invites accidents.
- **Remove any adjusting key or wrench before turning the power tool on.** A wrench or a key left attached to a rotating part of the power tool may result in personal injury.
- **Do not overreach. Keep proper footing and balance at all times.** This enables better control of the power tool in unexpected situations.
- **Dress properly. Do not wear loose clothing or jewellery. Keep your hair, clothing and gloves away from moving parts.** Loose clothes, jewellery or long hair can be caught in moving parts.
- **If devices are provided for the connection of dust extraction and collection facilities, ensure that these are connected and properly used.** Use of these devices can reduce dust-related hazards.

POWER TOOL USE AND CARE

- **Do not force the power tool. Use the correct power tool for your application.** The correct power tool will do the job better and more safely at the rate for which it was designed.
- **Do not use the power tool if the switch does not turn it on and off.** Any power tool that cannot be controlled with the switch is dangerous and must be repaired.
- **Disconnect the plug from the power source and/or the battery pack from the power tool before making any adjustments, changing accessories, or storing power tools.** Such preventive safety measures reduce the risk of starting the power tool accidentally.
- **Store idle power tools out of the reach of children and do not allow persons unfamiliar with the power tool or these instructions to operate the power tool.** Power tools are dangerous in the hands of untrained users.
- **Maintain power tools. Check for misalignment or binding of moving parts, breakage of parts and any other condition that may affect the power tool's operation. If damaged, have the power tool repaired before use.** Many accidents are caused by poorly maintained power tools.
- **Keep cutting tools sharp and clean.** Properly maintained cutting tools with sharp cutting edges are less likely to bind and are easier to control.
- **Use the power tool, accessories, tool bits, etc. in accordance with these instructions, taking into account the working conditions and the work to be performed.** Use of the power tool for operations different from those intended could result in a hazardous situation.

SERVICE

- **Have your power tool serviced by a qualified repair person using only identical replacement parts.** This will ensure that the safety of the power tool is maintained.

SAFETY GUIDELINES FOR THE CORDED 1/4-SHEET ORBIT SANDER

- **Hold power tools by insulated gripping surfaces when performing an operation where the tool may contact hidden wiring or its own cord.** Contact with a “live” wire may make exposed metal parts of the power tool “live” and could give the operator an electric shock.
- **Use clamps or another practical way to support and secure the workpiece to a stable platform.** Holding the work by hand or against your body is unstable and may lead to loss of control.
- **Always wear eye protection and a dust mask for dusty applications and when absorbed by your eyes and inhaled easily and may cause health complications.** Protect your hearing while using this tool.

- **Empty the dust canister frequently and after completion of sanding.** Be extremely careful of dust disposal; materials in fine particle form may be explosive. Do not throw sanding dust on an open fire. Spontaneous combustion may, in time, result from the mixture of oil or water with dust particles.
- **Do not wet sand with this sander.** Liquid entering the motor housing is an electrical shock hazard.
- **The label on your tool may include the following symbols. The symbols and their definitions are as follows:**

V Volts

A Amperes

Hz Hertz

W Watts

min Minutes

~ Alternating current

— — — Direct current

n Rated speed

n_0 No-load speed

 Class II Construction


.../min Revolutions or reciprocations per minute


 Grounding terminal


BPM Beats per minute

RPM Revolutions per minute

OPM Orbits per minute

 **WARNING** – To reduce the risk of injury, the user must read the instruction manual.

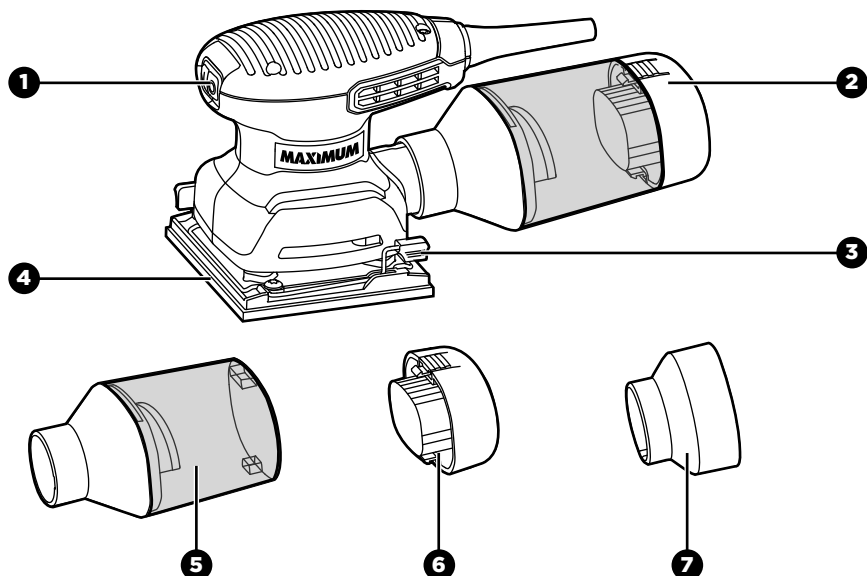
 **WARNING** – To reduce the risk of injury, always wear eye protection.

 **WARNING** – To reduce the risk of injury, always wear ear protection.

PACKAGE CONTENTS

Corded 1/4-sheet orbit sander, 2-in-1 vacuum adaptor, dust canister, sandpaper (x3), punch plate, nylon tote, and instruction manual.

KEY PARTS DIAGRAM



KEY PARTS DIAGRAM

NO.	PART
1	Switch
2	Dust canister
3	Sandpaper clamp
4	Sanding pad

NO.	PART
5	Dust-canister body
6	Microfilter
7	2-in-1 vacuum adaptor



WARNING!

- Remove the corded 1/4-sheet orbit sander from the package and examine it carefully. Do not discard the carton or any packaging material until all parts have been examined.
- If any part of the corded 1/4-sheet orbit sander is missing or damaged, do not use or plug in the tool until the part has been repaired or replaced. Failure to heed this warning could result in serious injury.

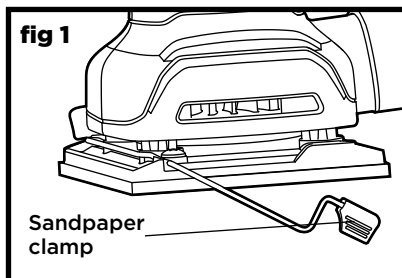
IMPORTANT INFORMATION

Before attempting to use this tool, become familiar with all of its operating features and safety requirements. For optimum performance and safety, read the following operating instructions carefully before using.

OPERATION INSTRUCTIONS

ATTACHING THE SANDPAPER (fig 1)

1. Unplug the sander.
2. Disengage the sandpaper clamp by pushing the wire clamp on the side of the sanding pad towards the sander body.
3. Line up the edge of the sandpaper with the edge of the sanding pad. Insert the sandpaper under the clamp. To lock the sandpaper in place, engage the clamp.
4. Disengage the clamp on the other side of the sander. Stretch the sandpaper tightly over the foam pad and insert the outer edge under the clamp at the rear of the sander.
5. Align the edge of the sandpaper with the edge of the sanding pad. To lock the sandpaper in place, engage the clamp.



NOTICE: Before attaching a new sanding sheet, remove any dust or debris from the sanding pad.



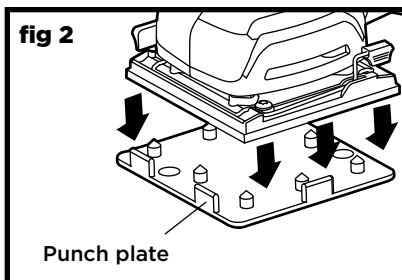
WARNING!

- Never connect the sander to the power source when you are assembling parts, making adjustments, installing or removing sandpaper, cleaning, or when it is not in use. Disconnecting the sander will prevent accidental starting, which could cause serious personal injury.

USING THE PUNCH PLATE (fig 2)

After the sandpaper has been clamped to the sanding pad, use the punch plate to punch the vacuum holes into the sheet.

1. Align the punch plate with the sanding pad and push down on the sander until the punch plate pierces the sandpaper.
2. Remove the punch plate from the sanding pad.



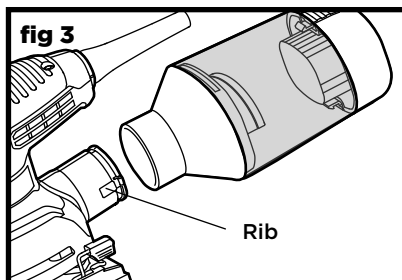
NOTICE: You may notice that some paper debris may not come out of the pad. This will not affect sanding performance but will reduce dust collection efficiency.

DUST CANISTER (fig 3)

Your sander is supplied with a dust canister to help you keep the working area clean. The dust canister is ideal for smaller jobs. For maximum efficiency, the dust canister should be emptied frequently during operation.

To install:

1. Disconnect the sander from the power source.
2. Align the slot on the dust canister with the rib on the tool, and then push the dust canister onto the tool until it locks into place.

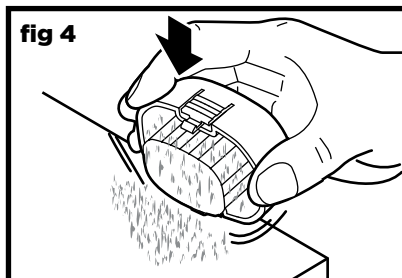


To remove:

1. Disconnect the sander from the power source.
2. Pull the dust canister out and away from the tool.

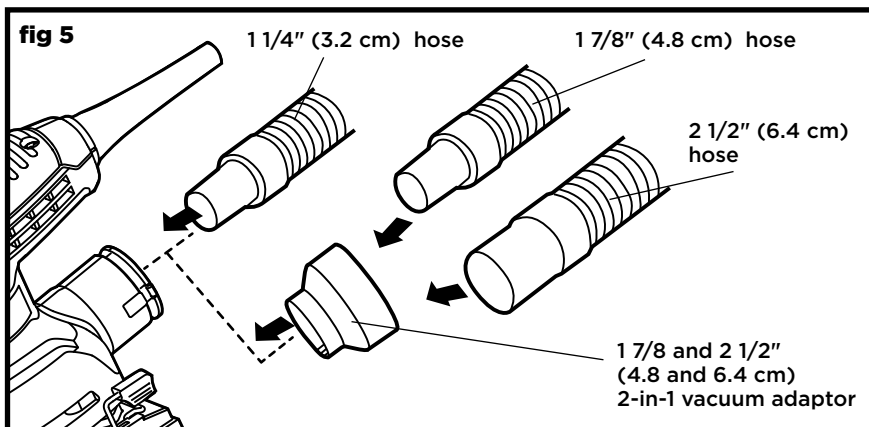
CLEANING AND EMPTYING THE DUST CANISTER (fig 4)

1. Remove the dust canister from the tool.
2. Holding the dust-canister body, press the release button to free the microfilter. Pull the microfilter from the dust canister.
3. Knock excess dust out of the microfilter, or remove dust with a soft brush. You may notice that all the dust may not come out of the microfilter. This will not affect sanding performance but will reduce dust collection efficiency.



WARNING!

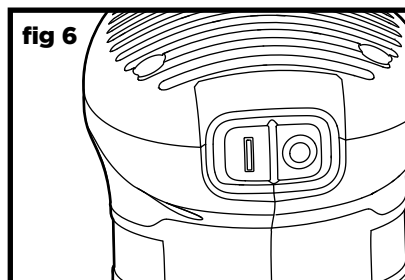
- Be extremely careful of dust disposal; materials in fine particle form may be explosive. Do not throw sanding dust on an open fire. Combustion from mixture of varnishes, lacquers, polyurethane, oil or water with dust particles can occur if there is a static discharge, a spark introduced in the canister, or excessive heat.

ATTACHING VACUUM HOSE (fig 5)

When the dust canister is removed from the tool, a vacuum hose accessory (available separately) can be attached to the dust port. To use this feature, attach the vacuum hose to the dust port, then connect the opposite end of the vacuum hose to a shop vacuum cleaner. A 2-in-1 vacuum adaptor is included for connection of this tool to a 1 7/8 or 2 1/2" (4.8 or 6.4 cm) vacuum hose. A 1 1/4" (3.2 cm) vacuum hose may be connected directly to the tool without an adaptor.

TURNING THE SANDER ON/OFF (fig 6)

To turn on the sander, depress the side of the rocker switch marked "I". To turn it off, depress the side of the rocker switch marked "O".



SANDING

This sander can be used for most sanding operations on materials such as wood, plastic and painted surfaces. Do not use the sander for wet sanding.

1. Plug the sander into the power source.
2. Place the sander on the workpiece so that the sandpaper is fully in contact with the workpiece.
3. Start the sander.
4. For best sanding results, apply light pressure on the sander, but do not force the tool.
5. Move the sander slowly over the workpiece, making successive passes in parallel lines, circles, or crosswise movements. The removal rate and the sanding pattern are determined by the choice of sandpaper and the work surface.
6. Do not allow the sander to stay on one spot for too long, as the sander's rapid action may remove too much material and make the surface uneven.
7. Upon completion of the sanding operation, remove the sander from the workpiece, turn the sander off, and wait until it comes to a complete stop before putting it down.

MAINTENANCE

The tool may be cleaned most effectively with compressed dry air. Always wear safety goggles when cleaning tools with compressed air. Before each use:

- Inspect the tool, the switch, and the pad.
- Check for damaged, missing, or worn parts.
- Check for loose screws, misalignment or binding of moving parts, or any other condition that may affect the operation.
- If abnormal vibration or noise occurs, turn the tool off immediately, and have the problem corrected before further use.



WARNING!

- To avoid accidents, always disconnect the tool from the power supply before cleaning or performing any maintenance. The tool may be cleaned most effectively with compressed dry air. Always wear safety goggles when cleaning tools with compressed air.
- Do not let brake fluids, gasoline, petroleum-based products, penetrating oil, etc. come into contact with plastic parts. These substances contain chemicals that can damage, weaken, or destroy plastic.
- When servicing, use only identical replacement parts. The use of any other parts may create a hazard or cause damage to the product.
- Use only accessories that are recommended for this tool. Accessories that may be suitable for one tool may become hazardous when used with another tool.
- To ensure safety and reliability, all repairs should be performed by a qualified service technician.

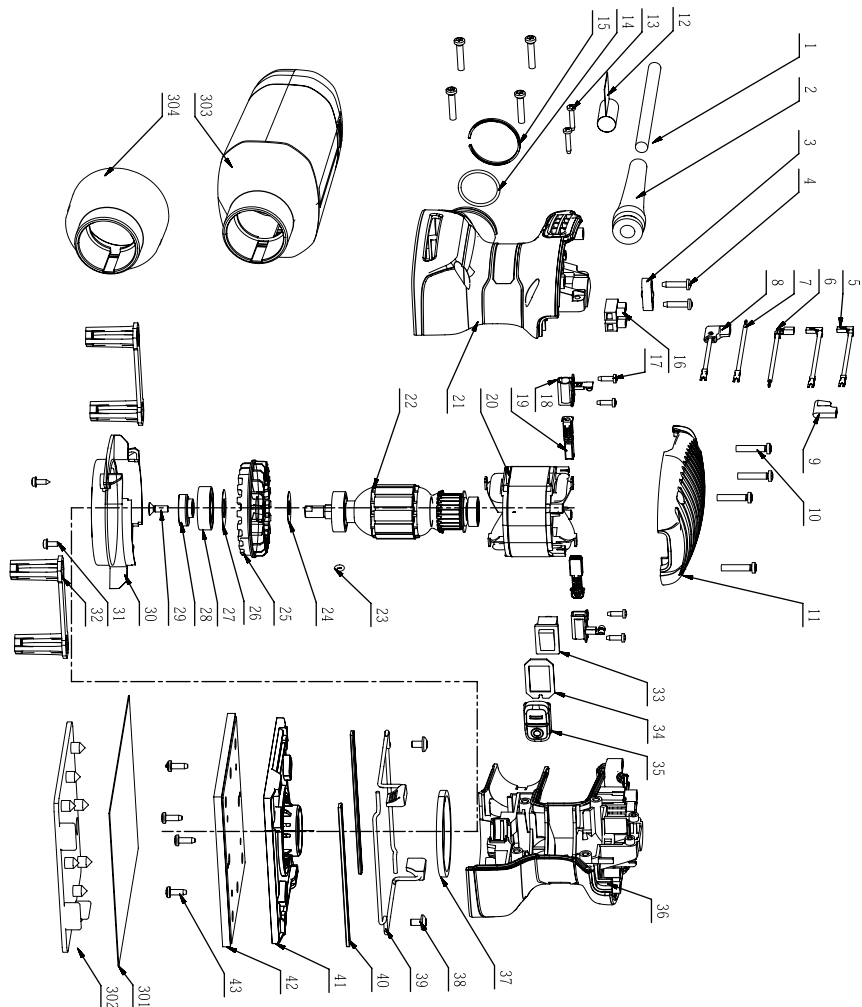
TROUBLESHOOTING

PROBLEMS	POSSIBLE CAUSES	SOLUTIONS
The sander does not start.	Not connected to power source.	Plug the sander into a power source.
Unsatisfactory sanding result.	The sandpaper is worn.	Replace with new sandpaper.
	The sandpaper is not suitable for the workpiece.	Use the correct sandpaper.

If the problem remains unsolved after performing the checks described above, call the toll-free helpline at 1-888-670-6682.

PARTS LIST

EXPLODED VIEW



No.	Part No.	Description	No.	Part No.	Description
1	4810002000	Power Cord and Plug	25	3421538000	Dust Fan
2	3121124000	Cord Guard	26	5650044000	Plain Washer
3	3120234000	Cord Anchorage	27	5700014000	Ball Bearing
4	5610024000	Tapping Screw	28	3520773000	Counterweight
5	4860450000	Internal Wire Assembly	29	5620648000	Screw
6	2823885000	Internal Wire Assembly	30	3127319000	Fan Baffle
7	2820818000	Internal Wire Assembly	31	3700137000	Screw
8	2820822000	Internal Wire Assembly	32	3402665000	Pad Support
9	4930008000	Sleeve	33	4870385000	Switch
10	5610248000	Tapping Screw	34	3700577000	Fixing Board
11	3322250000	Top Cover	35	3128959000	Switch Cover
12	2490136000	Nylon String	36	3322251000	Left Housing
13	5610013000	Screw	37	3703578000	Felt Ring
14	5690268000	O-ring	38	5620504000	Screw
15	5660187000	C-ring	39	3402447000	Wire Hold
16	4930004000	Connector	40	3129104000	Rubber Pad
17	5610011000	Screw	41	3422030000	Base Plate
18	2800186000	Brush Holder	42	2822801000	Soft Pad Assembly
19	4960285000	Carbon Brush	43	5620164000	Screw
20	2740437000	Stator	301	2820409000	Sandpaper
21	3322252000	Right Housing	302	3121354000	Paper Punch
22	2825092000	Rotor Set	303	2825317000	Dust Canister Assembly
23	5690013000	O-ring	304	3129002000	2-in-1 Vacuum Adaptor
24	5650216000	Plain Washer			

If any parts are missing or damaged, or if you have any questions, please call the toll-free helpline at 1-888-670-6682.

5-YEAR LIMITED WARRANTY

This MAXIMUM product is guaranteed for a period of 5 years from the date of original retail purchase against defects in workmanship and materials only and is subject to the following components:

- a) Component A: The carrying case is guaranteed for a period of 1-year from the date of original retail purchase against defects in workmanship and materials.
- b) Component B: Accessories, including drill bits and saw blades, do not carry a warranty.

Subject to the conditions and limitations described below, this product, if returned to us with proof of purchase within the stated warranty period and if covered under this warranty, will be repaired or replaced (with the same model, or one of equal value or specification), at the sole discretion of the Maximum Canada authorised repair centre ("Service Provider"). We will bear the cost of any repair or replacement and any costs of labour relating thereto.

These warranties are subject to the following conditions and limitations:*

- a) a bill of sale verifying the purchase and purchase date must be provided;
- b) defects in workmanship and material to be assessed and determined by the Service Provider;
- c) this warranty will not apply to any product or part thereof which is worn or broken or which has become inoperative due to abuse, misuse, accidental damage, neglect or lack of proper installation, operation or maintenance (as outlined in the applicable owner's manual or operating instructions);
- d) this warranty does not apply to normal wear and tear or to expendable parts or accessories (including drill bits and saw blades) that may be supplied with the product that by their nature have a limited life span and are expected to become inoperative or unusable after a reasonable period of use;
- e) this warranty will not apply to routine maintenance and consumable items such as, but not limited to, fuel, lubricants, vacuum bags, blades, belts, sandpaper, bits, fluids, rubber o-rings, tune-ups or adjustments;
- f) this warranty excludes the following components that may accompany your product:
 - (1) the carrying case, which is only for a period of 1-year from the date of original retail purchase against defects in workmanship and materials.
 - (2) accessories, including drill bits and saw blades, which do not carry a warranty of any kind.
- g) this warranty will not apply where damage is caused by repairs made or attempted by others (i.e. persons not authorized by the manufacturer), and any such unauthorized repairs or attempted repairs shall void this warranty in its entirety;



- h) this warranty will not apply to any parts other than original parts, except to the extent that the retailer or manufacturer or persons authorized by either of them have repaired or replaced them;
- i) this warranty will not apply to any product that was sold to the original purchaser as a reconditioned or refurbished product (unless otherwise specified in writing);
- j) this warranty will not apply to any product or part thereof if any part from another manufacturer is installed therein or any repairs or alterations have been made or attempted by unauthorized persons;
- k) this warranty will not apply to normal deterioration of the exterior finish, such as, but not limited to, scratches, dents, paint chips, or to any corrosion or discolouring by heat, abrasive and chemical cleaners;
- l) this warranty will not apply to component parts sold by and identified as the product of another company, which shall be covered under that product manufacturer's warranty, if any;
- m) any products replaced by the retailer in attempt to fulfill warranty obligations is subject to the original product warranty conditions and related time period as initiated by the original date of purchase; if product is purchased in Quebec, the warranty term will be extended for a period equal to the time during which the Quebec retailer possesses the product in attempt to fulfill warranty obligations; replaced product will not default to new product warranty conditions; and
- n) the retailer and manufacturer's sole obligation and the purchaser's sole remedy under this warranty shall be as set out herein. The warranties contained herein are not transferable and are given only to the purchaser. FURTHER, THE WARRANTIES SET OUT HEREIN ARE IN LIEU OF ALL OTHER WARRANTIES OR CONDITIONS, WHETHER EXPRESS, IMPLIED OR STATUTORY (INCLUDING SUCH AS ARISE UNDER THE SALE OF GOODS ACT OR THE INTERNATIONAL SALE OF GOODS ACT), ARISING OUT OF A COURSE OF DEALING OR USAGE OF TRADE OR OTHERWISE, INCLUDING, SUBJECT TO APPLICABLE LAW, ANY IMPLIED WARRANTIES OR CONDITIONS OF MERCHANTABILITY, MERCHANTABLE QUALITY, FITNESS OR ADEQUACY FOR A PARTICULAR PURPOSE OR USE, AND ALL OTHER SUCH WARRANTIES ARE EXPRESSLY DISCLAIMED BY THE RETAILER AND MANUFACTURER.

Additional Limitations

This warranty applies only to the original purchaser and may not be transferred.

This warranty applies for a period of 5 years from the date of original retail purchase, as indicated on the bill of sale.

Neither the retailer, Maximum Canada, nor the manufacturer shall be liable for any other expense, loss or damage, including, without limitation, any indirect, incidental, consequential or exemplary damages arising in connection with the sale, use or inability to use this product.

Under no circumstances shall the retailer, Maximum Canada, or manufacturer be liable to the purchaser for any claim for (a) indirect, special, punitive, incidental, exemplary, or consequential damages, (b) compensation for loss of profits, anticipated revenue, savings or goodwill, or other economic loss of the purchaser, (c) exemplary, aggravated or punitive damages howsoever incurred, (d) contribution or set-off in respect of any claims against the purchaser, (e) any damages whatsoever relating to third party products or services or the purchaser's materials, or (f) any damages whatsoever relating to interruption, delays, errors or omissions; in each case under any theory of law or equity, arising out of or in any way related to this warranty, even if advised of the possibility thereof. Notwithstanding any provision herein or entitlement of the purchaser at law, in equity or otherwise, in no event shall the liability of the retailer or manufacturer under this warranty, whether in contract, tort, product liability or otherwise, exceed, in the aggregate, the amount paid by the purchaser to the retailer for the product to which this warranty applies.

***Notice to Consumer**

This warranty gives you specific legal rights, and you may have other rights, which may vary from province to province. The provisions contained in this warranty are not intended to limit, modify, take away from, disclaim or exclude any statutory warranties set forth in any applicable provincial or federal legislation.

In addition to the 5-Year Limited Warranty, this MAXIMUM product is covered by our:

1-Year Repair Warranty

Maximum Canada will maintain this product and replace critical parts which have worn beyond reasonable use through normal use of such product, any time during the first year after purchase.

The following are excluded from this 1-Year Repair Warranty:

- a) missing or damaged parts or components that are a result of abuse or misuse;
- b) any wear and tear to non-critical parts or accessories that do not affect the core function of the product.

90-Day Satisfaction Guarantee

If you are not completely satisfied with the performance of your MAXIMUM product for any reason, you can return it within 90 days from the date of purchase with proof of purchase for exchange or a full refund.

Made in China

Imported by

MAXIMUM Canada Toronto, Canada M4S 2B8

