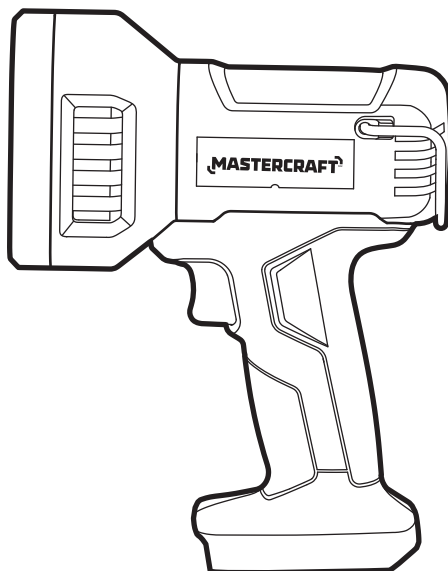


# MASTERCRAFT™/MC

## CORDLESS LED SPOT LIGHT

054-4265-8



### IMPORTANT:

Read and understand this instruction manual thoroughly before using the product.

## INSTRUCTION MANUAL



## TABLE OF CONTENTS

Technical Specifications	4
Safety Guidelines	5
Key Parts Diagram	8
Operating Instructions	9
Maintenance	10
Troubleshooting	11
Parts List	12
Warranty	14

### NOTE:

If any parts are missing or damaged, or if you have any questions, please call our toll-free helpline at 1-800-689-9928.



### SAVE THESE INSTRUCTIONS

- This manual contains important safety and operating instructions. Read all instructions and follow them when using this product.

**TECHNICAL SPECIFICATIONS**

Rated Input	20V d.c. max*
Number of LEDs	3 white LEDs, 1 red LED
Two Brightness Modes	Red and white
Light Output	1000 lumens in white LED setting
Beam Distance	1033' (315 m) in white LED setting
Batteries	1.5 Ah Li-ion (054-3124-0; sold separately)
	2.0 Ah Li-ion (054-7553-4; sold separately)
	4.0 Ah Li-ion (054-7557-6; sold separately)
	5.0 Ah Li-ion (054-2434-8; sold separately)
Spot Light Weight (without battery)	1 lb 5 oz (0.6 kg)

\*Maximum battery voltage without workload; with workload nominal voltage is 18V.

Recommend using tool with Mastercraft® 20V max\* Lithium-Ion 4.0 Ah battery (054-7557-6; sold separately) for optimal performance.

### SAFETY GUIDELINES



#### WARNING!

Safety symbols in this instruction manual are used to flag possible dangers. The safety symbols and their explanations require your full understanding. The safety warnings do not, by themselves, eliminate any danger, nor are they substitutes for proper accident prevention measures.



#### WARNING!

This Safety Alert Symbol indicates caution, warning, or danger. Failure to obey a safety warning can result in serious injury to yourself or others. To reduce the risk of injury, fire, or electric shock, always follow the safety precautions.

### KNOW YOUR TOOL

To operate this tool, carefully read this instruction manual and all labels affixed to the cordless LED spot light before using. Keep this manual available for future reference.

### IMPORTANT

This tool should only be serviced by a qualified service technician. For more information, call the toll-free helpline at 1-800-689-9928.

### READ ALL INSTRUCTIONS THOROUGHLY

### SAVE THESE INSTRUCTIONS

### GENERAL POWER TOOL SAFETY WARNINGS



#### WARNING!

**Read all safety warnings, instructions, illustrations and specifications provided with this power tool.** Failure to follow all instructions listed below may result in electric shock, fire and/or serious injury.

### SAVE ALL WARNINGS AND INSTRUCTIONS FOR FUTURE REFERENCE.

The term “power tool” in the warnings refers to your mains-operated (corded) power tool or battery-operated (cordless) power tool.

### IMPORTANT SAFETY INSTRUCTIONS



#### WARNING!

When using electric appliances, basic precautions should always be followed, including the following:

- Read all the instructions before using the appliance.
- To reduce the risk of injury, close supervision is necessary when an appliance is used near children.

- Do not contact moving parts.
- Only use attachments recommended or sold by the manufacturer.
- To reduce the risk of electric shock or damage to the charger and battery, use only the batteries and charger listed.

BATTERY PACK	CHARGER
054-3124-0	
054-7553-4	054-3126-6
054-7557-6	054-7559-2
054-2434-8	

- The lens gets very hot during use. To reduce the risk of burns, do not touch the hot lens.
- To reduce the risk of fire, keep away from combustible materials while in operation.
- Recharge only with the charger specified by the manufacturer. A charger that is suitable for one type of battery pack may create a risk of fire when used with another battery pack.
- Use power tools only with specifically designated battery packs. Use of any other battery packs may create a risk of injury and fire.
- Do not direct the light beam at persons or animals and do not stare into the light beam yourself (not even from a distance).
- When the battery pack is not in use, keep it away from other metal objects like paper clips, coins, keys, nails, screws or other small metal objects that can make a connection from one terminal to another. Shorting the battery terminals together may cause burns or a fire.
- Under abusive conditions, liquid may be ejected from the battery; avoid contact. If contact accidentally occurs, flush with water. If liquid contacts eyes, also seek medical help. Liquid ejected from the battery may cause irritation or burns.
- Have your power tool serviced by a qualified repair person using only identical replacement parts. This will ensure that the safety of the power tool is maintained.
- Do not use outdoors. This worklight is intended for household use only. Using it outdoors may increase the risk of electric shock or fire.
- Do not wash the worklight with water or keep it in a damp location. If the worklight gets wet, dry it off as soon as possible.
- To reduce the risk of electrical shock, do not put the unit in water or other liquid.
- Do not place or store the unit where it can fall or be pulled into a tub or sink.
- Do not work with the cordless worklight in hazardous areas.
- Do not use the cordless worklight in road traffic. The cordless worklight is not approved for illumination in road traffic.
- Remove the battery from the cordless worklight before doing any work on the cordless worklight itself (e.g. assembling, maintenance, cleaning, etc.), as well as when transporting and storing the worklight.

- Do not allow children to use the cordless worklight. It is intended for professional use. Children can unintentionally blind themselves or other persons.
- The label on your tool may include the following symbols. The symbols and their definitions are as follows:

V ..... Volts

A ..... Amperes

Hz ..... Hertz

W ..... Watts

min ..... Minutes

~ ..... Alternating current

— or d.c. .... Direct current


$n_0$  ..... No-load speed

 ..... Class II Construction

.../min ..... Revolutions or reciprocation per minute

 ..... Grounding terminal

BPM ..... Beats per minute

 ..... WARNING – To reduce the risk of injury, the user must read the instruction manual.

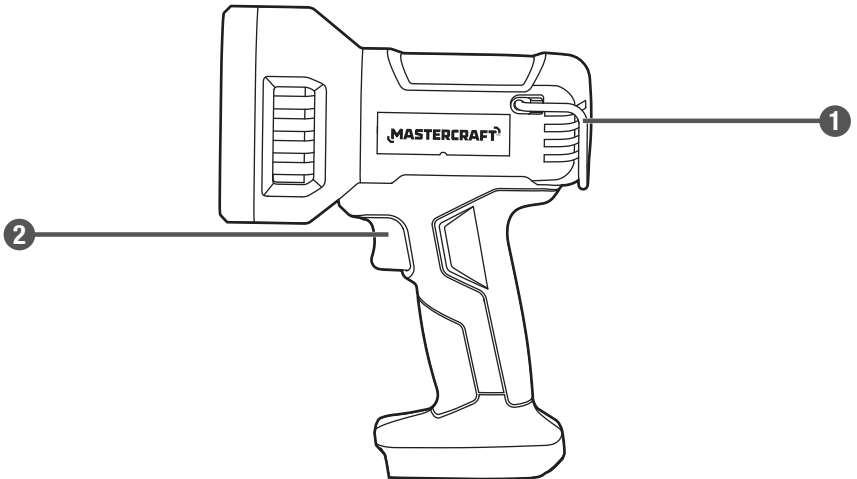
 ..... WARNING – To reduce the risk of injury, always wear eye protection.

 ..... WARNING – To reduce the risk of injury, always wear ear protection.

**SAVE THESE INSTRUCTIONS**

**PACKAGE CONTENTS:**

Cordless LED spot light, instruction manual.

**KEY PARTS DIAGRAM**

No.	Description
1	Hook

No.	Description
2	Switch

Before attempting to use this tool, become familiar with all of its operating features and safety requirements. For optimum performance and safety, read the following operating instructions carefully before using.

**WARNING!**

- Remove the cordless LED spot light from the package and examine it carefully. Do not discard the carton or any packaging material until all parts have been examined.
- If any part of the spot light is missing or damaged, do not attach the battery pack to the tool or use the tool until the part has been repaired or replaced. Failure to heed this warning could result in serious injury.
- Carefully read the instruction manuals for your Mastercraft 20V max Lithium-ion Battery and Mastercraft 20V max Lithium-ion Charger for safety and operation instructions.



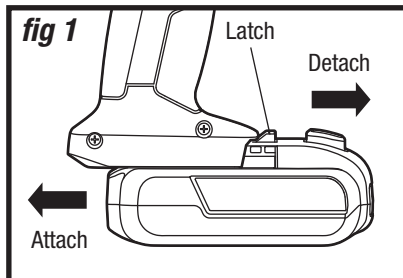
### OPERATION INSTRUCTIONS

#### TO ATTACH BATTERY PACK (fig 1)

1. Align the raised platform on the battery pack with the grooves on the bottom of the tool, then slide the battery pack into the body of the tool.
2. Make sure it latches securely into place.

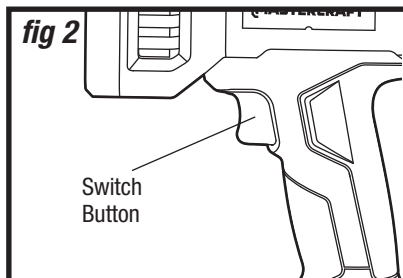
#### TO DETACH BATTERY PACK (fig 1)

1. Depress the battery-release button located on the front of the battery pack to release the battery pack.
2. Pull the battery pack toward the front of the tool to remove it from the tool.



#### TURN THE SPOT LIGHT ON AND SELECT THE BRIGHTNESS MODE (fig 2)

1. Press the switch button: the light is on the white light setting.
2. Press the switch a second time: the light is on the red light setting.
3. Press the switch a third time: the light will turn off.



#### UTILITY HOOK

Your light is equipped with a convenient utility hook for hanging your light. To use, simply lift the hook until it snaps into the open position. When not in use, always lower the hook until it snaps into the closed position.

**NOTICE:** When attaching the battery pack into the tool, make sure that the raised platform on the battery pack aligns with the grooves on the bottom of the tool and that the latches snap properly into place. Improper assembly of the battery pack can cause damage to internal components.



#### WARNING!

- Do not direct the light beam at persons or animals before attaching the battery pack. The light will be on if you didn't turn off the light last time. Turn the light off before detaching the battery pack.

**MAINTENANCE**

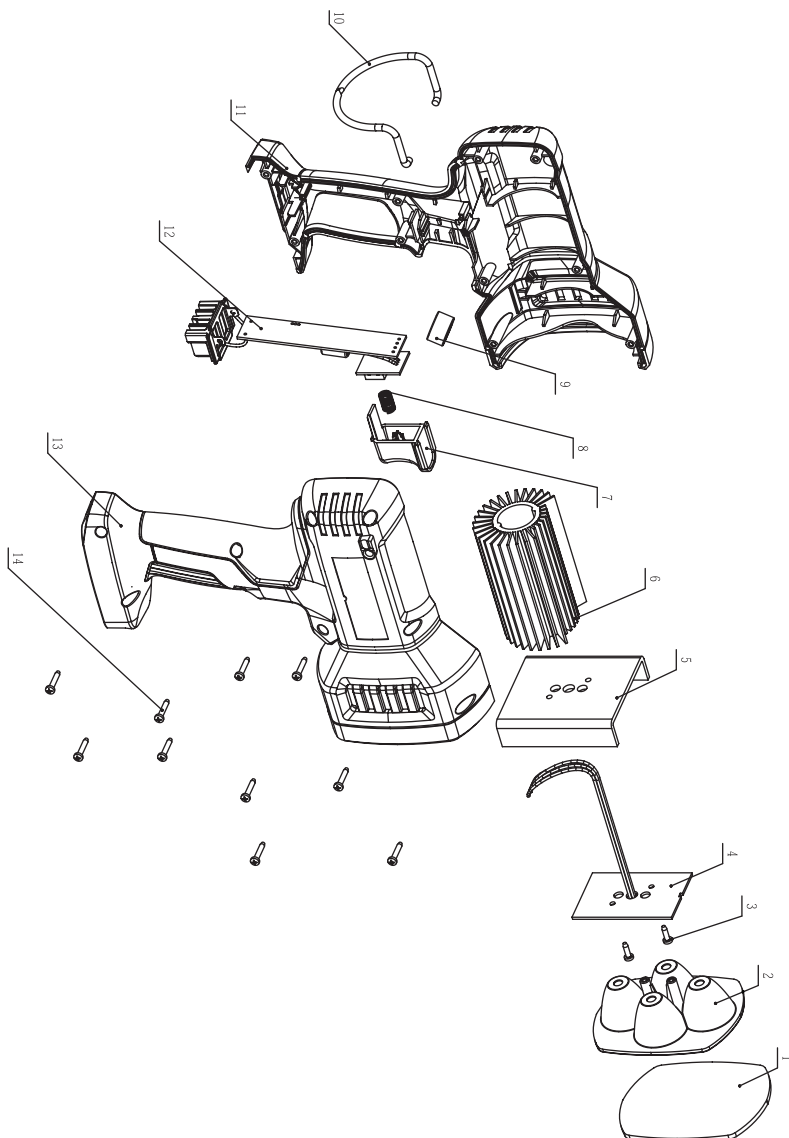
1. To avoid personal injury, always remove the battery pack from the tool when cleaning or performing any maintenance.
2. Do not let brake fluids, gasoline, petroleum-based products, penetrating oil, etc. come into contact with plastic parts. These substances contain chemicals that can damage, weaken, or destroy plastic.
3. When servicing, use only identical replacement parts. The use of any other parts may create a hazard or cause damage to the product.
4. Always use only a soft, dry cloth to clean your tool; never use any detergent or alcohol.

## TROUBLESHOOTING

Problem	Possible causes	Solutions
The spot light does not work.	The battery is depleted.	Change or charge the battery.

If any parts are missing or damaged, or if you have any questions, please call the toll-free helpline at 1-800-689-9928.

## EXPLODED VIEW



No.	Part No.	Description
1	3706297000	Transparent Guard
2	3128897000	Reflector
3	5610011000	Tapping Screw
4	2830256000	Electric Assembly
5	3706287000	Mounting Plate
6	3706295000	Heat Sink
7	3126608000	Switch Button

No.	Part No.	Description
8	3660110000	Spring
9	3680109000	Magnet Ring
10	3650074000	Pothook
11	3322211000	Left Housing
12	2830226000	Electric Assembly
13	3322212000	Right Housing
14	5610013000	Tapping Screw

If any parts are missing or damaged, or if you have any questions, please call the toll-free helpline, at 1-800-689-9928.

This Mastercraft product is guaranteed for a period of **3 years from the date of original retail purchase** against defects in workmanship and materials, except for the following components:

- a) Component A: Batteries, chargers and carrying case, which are guaranteed for a period of 2 years from the date of original retail purchase against defects in workmanship and materials;
- b) Component B: Accessories, which are guaranteed for a period of 1 year from the date of original retail purchase against defects in workmanship and materials.

Subject to the conditions and limitations described below, this product, if returned to us with proof of purchase within the stated warranty period and if covered under this warranty, will be repaired or replaced (with the same model, or one of equal value or specification), at our option. We will bear the cost of any repair or replacement and any costs of labour relating thereto.

**These warranties are subject to the following conditions and limitations:**

- a) a bill of sale verifying the purchase and purchase date must be provided;
- b) this warranty will not apply to any product or part thereof which is worn or broken or which has become inoperative due to abuse, misuse, accidental damage, neglect or lack of proper installation, operation or maintenance (as outlined in the applicable owner's manual or operating instructions) or which is being used for industrial, professional, commercial or rental purposes;
- c) this warranty will not apply to normal wear and tear or to expendable parts or accessories that may be supplied with the product that are expected to become inoperative or unusable after a reasonable period of use;
- d) this warranty will not apply to routine maintenance and consumable items such as, but not limited to, fuel, lubricants, vacuum bags, blades, belts, sandpaper, bits, fluids, tune-ups or adjustments;
- e) this warranty will not apply where damage is caused by repairs made or attempted by others (i.e. persons not authorized by the manufacturer);
- f) this warranty will not apply to any product that was sold to the original purchaser as a reconditioned or refurbished product (unless otherwise specified in writing);
- g) this warranty will not apply to any product or part thereof if any part from another manufacturer is installed therein or any repairs or alterations have been made or attempted by unauthorized persons;

- h) this warranty will not apply to normal deterioration of the exterior finish, such as, but not limited to, scratches, dents, paint chips, or to any corrosion or discolouring by heat, abrasive and chemical cleaners; and
- i) this warranty will not apply to component parts sold by and identified as the product of another company, which shall be covered under the product manufacturer's warranty, if any.

**Additional Limitations**

This warranty applies only to the original purchaser and may not be transferred. Neither the retailer nor the manufacturer shall be liable for any other expense, loss or damage, including, without limitation, any indirect, incidental, consequential or exemplary damages arising in connection with the sale, use or inability to use this product.

**Notice to Consumer**

This warranty gives you specific legal rights, and you may have other rights, which may vary from province to province. The provisions contained in this warranty are not intended to limit, modify, take away from, disclaim or exclude any statutory warranties set forth in any applicable provincial or federal legislation.

Made in China

Imported by

Mastercraft Canada Toronto, Canada M4S 2B8

