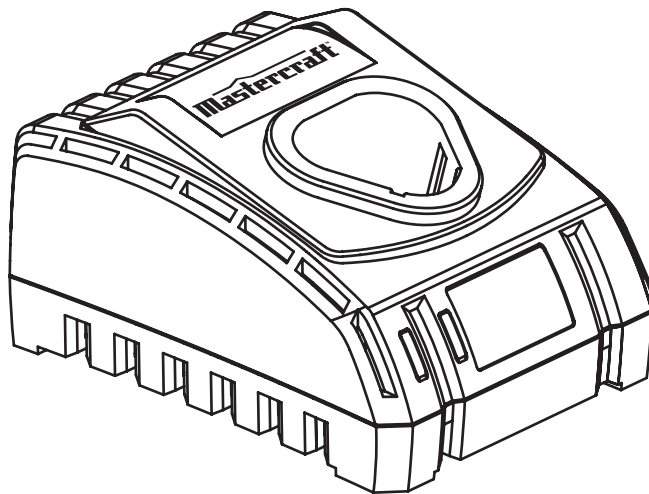


model no. ACG112CL

Mastercraft[™]

BATTERY CHARGER



IMPORTANT:

Please read this manual carefully before running this battery charger and save it for reference

**INSTRUCTION
MANUAL**

TABLE OF CONTENTS

Technical specifications	4
Information for radiated emission	5
Key parts diagram	6
Parts list	7
Charging procedure	8
Maintain tools with care	10
Warranty	11

NOTE:

If any parts are missing or damaged, or if you have any questions, please call our toll-free helpline at 1-800-689-9928

**SAVE THESE INSTRUCTIONS**

This manual contains important safety and operating instructions. Read all instructions and follow them with use of this product

TECHNICAL SPECIFICATIONS

Rated input voltage	120 V 60 Hz AC
Voltage range of chargeable batteries	12 V
Charging current	1.5 A
Rated power	25 W
Charging time (approx.)	3-hours for 054-3255-8 / 1-hour for 054-3207-4
Protection class	□ / II
Weight	12 oz (0.34 kg)

INFORMATION FOR RADIATED EMISSION

This device complies with Canadian ICES-001.

This device complies with Part 15 of the FCC Rules.

Operation is subject to the following two conditions:

- This device may not cause harmful interference, and
- This device must accept any interference received, including interference that may cause undesired operation.

These limits are designed to provide reasonable protection against harmful interference in a residential installation. This equipment generates, uses and can radiate radio frequency energy and, if not installed and used in accordance with the instructions, may cause harmful interference to radio communications.

However, there is no guarantee that interference will not occur in a particular installation. If this equipment does cause harmful interference to radio or television reception, which can be determined by turning the equipment off and on, the user is encouraged to try to correct the interference by one or more of the following measures:

- Reorient or relocate the receiving antenna.
- Increase the separation between the equipment and receiver.
- Connect the equipment into an outlet on a circuit different from that to which the receiver is connected.
- Consult the dealer or an experienced radio/TV technician for help.



WARNING!

This product may contain lead, phthalates or other chemicals known to the state of California to cause cancer, birth defects and other reproductive harm. Please wash your hands after use.



WARNING!

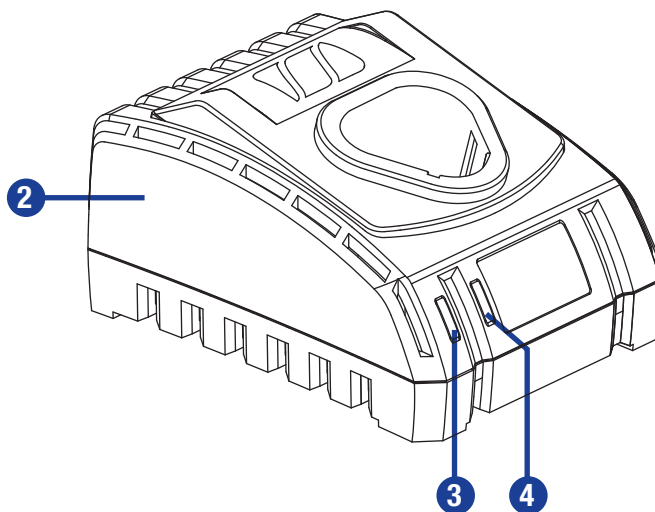
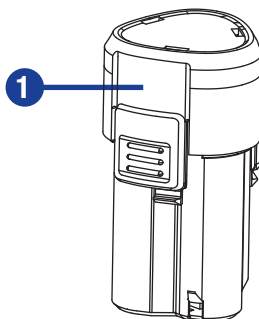
Changes or modifications to this unit not expressly approved by the party responsible for compliance could void the user's authority to operate the equipment.

NOTE: This equipment has been tested and found to comply with the limits for a Class B digital device, pursuant to Part 15 of the FCC Rules.

KEY PARTS DIAGRAM

No.	Description
1	Battery pack
2	Battery charger

No.	Description
3	Red light
4	Green light

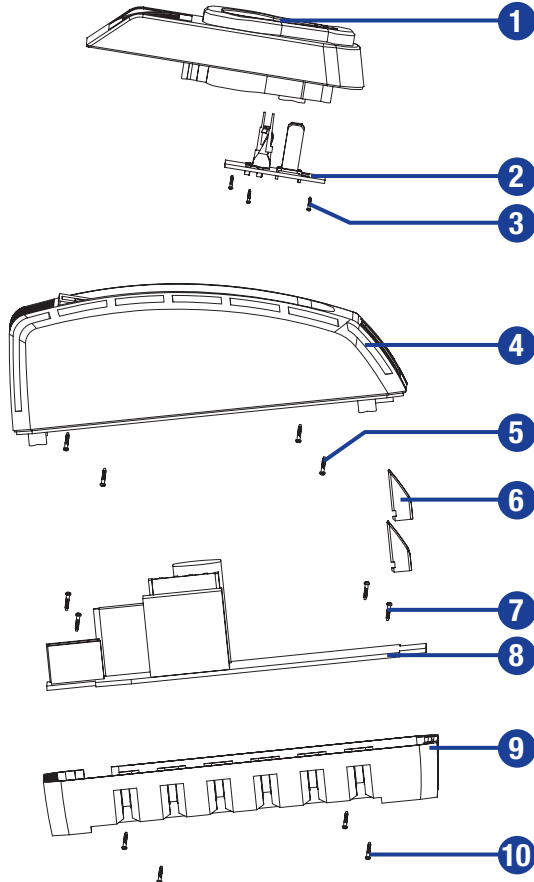


* Not all the accessories illustrated or described are included in standard delivery.

PARTS LIST

No.	Description	Qty.
1	Terminal block	1
2	Bracket	1
3	Self-tapping screw	3
4	Charger top cover	1
5	Self-tapping screw	4

No.	Description	Qty.
6	Lampshade	2
7	Self-tapping screw	4
8	Power supply board	1
9	Charger lower cover	1
10	Self-tapping screw	4



CHARGING PROCEDURE

NOTE: Your battery pack is not charged and must be charged before use. When the new battery or one which has not been used for long periods of time is charged, it may not reach full charge until after it has been fully discharged in use and recharged several times.

HOW TO CHARGE YOUR BATTERY

- 1) Plug the charger into an appropriate outlet; the green light will turn on.
- 2) Insert the battery pack into the charger; the green light will keep on and the red light will flash to indicate the charging process has started.
- 3) On completion of charging, the red light will switch from flash to on, and the green light will keep on. The pack is now fully charged; unplug the charger and remove the battery pack.

CHARGING INDICATOR

This charger is designed to detect some problems that can arise with battery packs. Indicator lights indicate problems (see table below). If this occurs, insert a new battery pack to determine if the charger is OK. If the new battery charges correctly, then the original pack is defective and should be returned to a service centre or recycling depot. If the new battery pack displays the same problem as the original battery pack, have the charger tested at an authorized service centre.

Green light	Red light	Status
On —————	Flash - - - -	Charging
On —————	On —————	Fully charged
Flash - - - -	Flash - - - -	Defective battery
Off	Flash - - - -	Hot/cold delay



NOTE: Before using the tool, read the instruction book carefully.



WARNING:

- The charger and battery pack are specifically designed to work together so do not attempt to use any other devices with them. Inserting metal objects into the charger or battery pack may cause electrical failure and a hazardous condition.



WARNING:

- When battery charge runs out after continuous use or exposure to direct sunlight or heat, allow time for the tool to cool down before re-charging to achieve the full charge.

HOT/COLD BATTERY PACK DELAY

This charger has a hot/cold battery pack delay feature. When the charger detects a battery pack that is too hot or cold, it automatically starts a hot/cold pack delay and suspends charging until the battery pack has reached the correct temperature. The charging process will then automatically begin (red light flashes). This feature ensures maximum battery life.

WEAK BATTERY PACKS

This charger will detect a weak battery pack. When a weak battery pack is inserted into the charger, the charger will try to repair it. This process will last about 30 minutes (red light flashes). If the repair is successful, it will automatically begin to charge the battery pack to the highest capacity possible (red light flashes continuously). If the repair fails, red and green lights flash, indicating the battery pack is dead.

IMPORTANT CHARGING NOTES:

1. For a new battery or a battery that has been in storage for an extended period of time, please recharge the battery before use. If you want to store the battery for a long time, please fully charge the battery pack to ensure maximum battery life.
2. Longer life and better performance can be obtained if the battery pack is charged when the air temperature 18–24°C (65–75°F). Do not charge the battery pack in air temperatures below 4.5°C (40°F), or above 40.5°C (105°F), in order to prevent serious damage to the battery pack.
3. Never freeze your charger or immerse charger in water or any other liquid.
4. When the battery pack fails to produce sufficient power on jobs that were previously done easily, please recharge the battery; do not continue to use under this condition. A partially discharged pack may be recharged with no adverse effect.
5. When charging it is normal that the charger and battery pack may become warm to the touch.
6. If the battery pack does not charge properly:
 - a. Check current at power outlet by plugging in another appliance.
 - b. Plug and unplug to check whether the charger is ok.
 - c. Check whether the battery has been damaged.
 - d. Move the charger and battery pack to a location where the surrounding air temperature is approximately 18–24°C (65–75°F).
 - e. If the charging problem persists, take the tool, battery pack and charger to an authorized service centre.
 - f. Under certain conditions, when the charger is plugged into the power supply, the exposed charging contacts inside the charger can be shorted by foreign material. Foreign materials of a conductive nature such as metallic particles should be kept away from charger cavities. Always unplug the charger from the power supply when there is no battery pack in the charger or before attempting to clean.

NOTE: Repaired battery packs are still usable but should not be expected to perform as much work as new battery packs.

MAINTAIN TOOLS WITH CARE

Remove the plug from the socket before carrying out any adjustment, servicing or maintenance.

Your tool requires no additional lubrication or maintenance. Never use water or chemical cleaners to clean your power tool. Wipe clean with a dry cloth. Always store your power tool in a dry place.

If the supply cord is damaged, it must be replaced by the manufacturer, its service agent or similarly qualified persons in order to avoid a hazard.



This Mastercraft product is guaranteed for a period of **two (2) years** from the date of original retail purchase, against defects in materials and workmanship.

Subject to the conditions and limitations described below, this product, if returned to us with proof of purchase within the stated warranty period and if covered under this warranty, will be repaired or replaced (with the same model, or one of equal value or specification), at our option. We will bear the cost of any repair or replacement and any costs of labour relating thereto.

These warranties are subject to the following conditions and limitations

- a. a bill of sale verifying the purchase and purchase date must be provided;
- b. this warranty will not apply to any product or part thereof which is worn or broken or which has become inoperative due to abuse, misuse, accidental damage, neglect or lack of proper installation, operation or maintenance (as outlined in the applicable owner's manual or operating instructions) or which is being used for industrial, professional, commercial or rental purposes;
- c. this warranty will not apply to normal wear and tear or to expendable parts or accessories that may be supplied with the product which are expected to become inoperative or unusable after a reasonable period of use;
- d. this warranty will not apply to routine maintenance and consumable items such as, but not limited to, fuel, lubricants, vacuum bags, blades, belts, sandpaper, bits, fluids, tune-ups or adjustments;
- e. this warranty will not apply where damage is caused by repairs made or attempted by others (i.e. persons not authorized by the manufacturer);
- f. this warranty will not apply to any product that was sold to the original purchaser as a reconditioned or refurbished product (unless otherwise specified in writing);
- g. this warranty will not apply to any product or part thereof if any part from another manufacturer is installed therein or any repairs or alterations have been made or attempted by unauthorized persons;
- h. this warranty will not apply to normal deterioration of the exterior finish, such as, but not limited to, scratches, dents, paint chips, or to any corrosion or discolouring by heat, abrasive and chemical cleaners; and
- i. this warranty will not apply to component parts sold by and identified as the product of another company, which shall be covered under the product manufacturer's warranty, if any.

Additional Limitations

This warranty applies only to the original purchaser and may not be transferred. Neither the retailer nor the manufacturer shall be liable for any other expense, loss or damage, including, without limitation, any indirect, incidental, consequential or exemplary damages arising in connection with the sale, use or inability to use this product.

Notice to Consumer

This warranty gives you specific legal rights, and you may have other rights, which may vary from province to province. The provisions contained in this warranty are not intended to limit, modify, take away from, disclaim or exclude any statutory warranties set forth in any applicable provincial or federal legislation.

This product is not guaranteed if used for industrial or commercial purposes.

Imported by Mastercraft Canada Toronto, Canada M4S 2B8

