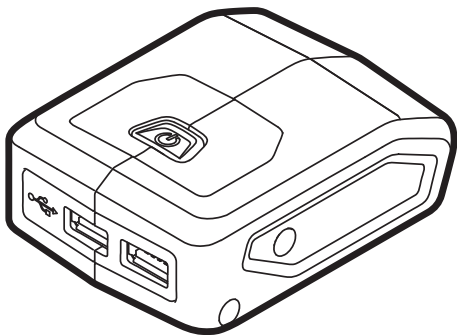


# MASTERCRAFT™

## USB CHARGING ADAPTOR

054-2438-0



### **IMPORTANT:**

Read and understand this instruction manual thoroughly before using the product.

**INSTRUCTION  
MANUAL**



## TABLE OF CONTENTS

Technical Specifications	4
Safety Guidelines	5
Key Parts Diagram	9
Operating Instructions	10
Maintenance	12
Troubleshooting	13
Parts List	14
Warranty	15

### NOTE:

If any parts are missing or damaged, or if you have any questions, please call our toll-free helpline at 1-800-689-9928.



### SAVE THESE INSTRUCTIONS

- This manual contains important safety and operating instructions. Read all instructions and follow them with use of this product.

**TECHNICAL SPECIFICATIONS**

Rated input	20 V d.c.
Output voltage	5 V d.c.
Output current	Max. 1.5A (in total / single)

### SAFETY GUIDELINES:



#### WARNING!

Safety symbols in this Instruction Manual are used to flag possible dangers. The safety symbols and their explanations require your full understanding. The safety warnings do not, by themselves, eliminate any danger, nor are they substitutes for proper accident prevention measures.



#### WARNING!

This Safety Alert Symbol indicates caution, warning, or danger. Failure to obey a safety warning can result in serious injury to yourself or others. To reduce the risk of injury, fire, or electric shock, always follow the safety precautions.

### KNOW YOUR TOOL

To operate this tool, carefully read this Instruction Manual and all labels affixed to the random orbit sander before using. Keep this instruction manual available for future reference.

### IMPORTANT

This tool should only be serviced by a qualified service technician. For more information, call the toll free helpline at 1-800-689-9928.

### READ ALL INSTRUCTIONS THOROUGHLY

### SAVE THESE INSTRUCTIONS

### GENERAL POWER TOOL SAFETY WARNINGS



#### WARNING!

Read all safety warnings, instructions, illustrations and specifications provided with this power tool. Failure to follow all instructions listed below may result in electric shock, fire and/or serious injury.

### READ AND UNDERSTAND THIS INSTRUCTION MANUAL THOROUGHLY BEFORE USING THE PRODUCT. SAVE THESE INSTRUCTIONS FOR FUTURE REFERENCE.

The term "power tool" in the warnings refers to your mains-operated (corded) power tool or battery-operated (cordless) power tool.

### WORK AREA SAFETY

- **Avoid dangerous environments.** Do not use in rain, snow, damp or wet locations. Do not use in the presence of explosive atmospheres (gaseous fumes, dust or flammable materials) because sparks may be generated when inserting or removing battery pack, possibly causing fire.

## ELECTRICAL SAFETY

- **Do not use an extension cord with the appliance.** Using an extension cord could result in the risk of fire and electrical shock.

## PERSONAL SAFETY

- **Follow appliance manufacturers' instructions regarding operation and power.** Use of the appliance different from those intended could result in a hazardous situation.
- **Use the correct appliance for the application.**
- **Stay alert, watch what you are doing and use common sense when operating a power tool.** Do not use the tool while tired or under the influence of drugs, alcohol, or medication. A moment of inattention while operating power tools may result in serious personal injury.

## POWER TOOL USE AND CARE

- **Remove the battery pack or any other devices from the USB charging adaptor before storing.** Such preventive safety measures reduce the risk of starting the appliance accidentally.
- **Prevent unintentional starting.** Ensure the switch is in the off-position before connecting to battery pack, picking up or carrying the USB charging adaptor. Carrying the USB charging adaptor with your finger on the switch or energizing USB charging adaptor that have the switch on invites accidents.
- **Store idle USB charging adaptor and battery pack out of the reach of children and do not allow persons unfamiliar with the USB charging adaptor, battery pack or these instructions to operate them.** USB charging adaptor and battery packs are dangerous in the hands of untrained users.
- **Disconnect the battery pack from the USB charging adaptor before making any adjustments, changing accessories, maintenance, or storing USB charging adaptor.**
- **Check for misalignment, breakage of parts and any other condition that may affect the USB charging adaptor operation. If damaged, have the USB charging adaptor repaired before use.** Many accidents are caused by poorly maintained USB charging adaptor.
- **Use the USB charging adaptor in accordance with these instructions, taking into account the working conditions and the work to be performed.** Use of the USB charging adaptor for operations different from those intended could result in a hazardous situation.
- **Keep USB charging adaptor and battery pack away from other metal objects like paper clips, coins, keys, nails, screws, or other small metal objects that can make a connection from one terminal to another.** Shorting the terminals together may cause burns or a fire.
- **Under abusive conditions, liquid may be ejected from the battery; avoid contact.** If contact accidentally occurs, flush with water. If liquid contacts eyes, additionally seek medical help. Liquid ejected from the battery may cause irritation or burns.
- **Do not use a battery pack or tool that is damaged or modified.** Damaged or modified batteries may exhibit unpredictable behaviour resulting in fire, explosion or risk of injury.

### BATTERY TOOL USE AND CARE

- **USB charging adaptor is rated for 20V DC only.** Use only appropriate battery packs. Use of any other battery packs may create a risk of injury and fire.
- **Recharge only with the charger specified by the manufacturer.** A charger that is suitable for one type of battery pack may create a risk of fire when used with another battery pack.
- **To reduce the risk of electric shock, always remove battery pack before cleaning or maintenance.**
- **Do not expose a battery pack or USB charging adaptor to fire or excessive temperature.** Exposure to fire or temperature above: 130°C (265°F) may cause explosion.
- **Follow all charging instructions and do not charge the battery pack or USB charging adaptor outside of the temperature range specified in the instructions.** Charging improperly or at temperatures outside the specified range may damage the battery and increase the risk of fire.

### SERVICE

- **Do not disassemble.** Incorrect reassembly may result in the risk of electric shock or fire. If it is damaged, take it to a specified service facility.
- **Store in a cool, dry place.** Do not store where temperatures may exceed 104°F (40°C) such as in direct sunlight, a vehicle or metal building during the summer.
- **Maintain labels and nameplates.** These carry important information. If unreadable or missing, contact a specified service facility for a free replacement.
- **Have your power tool serviced by a qualified repair person using only identical replacement parts.** This will ensure that the safety of the power tool is maintained.
- **Do not modify or attempt to repair the USB charging adaptor or the battery pack except as indicated in the instructions for use and care.**

### SAVE THESE INSTRUCTIONS

**ADDITIONAL SAFETY GUIDELINES FOR THE USB CHARGING ADAPTOR**

- The label on your tool may include the following symbols. The symbols and their definitions are as follows:

V ..... Volts

A ..... Amperes


Hz ..... Hertz

W ..... Watts

min ..... Minutes

~ ..... Alternating current

— or d.c. .... Direct current

c  US ..... This symbol designates that this tool is recognized by Underwriters Laboratories. ..... WARNING – To reduce the risk of injury, user must read instruction manual. ..... WARNING – To reduce the risk of injury always wear eye protection.**WARNING!**

To reduce the risk of electric shock or damage to the charger and battery, use only the Mastercraft® batteries and chargers listed. Please refer to the battery and charger manuals for detailed operating information.

- For best results, your USB charging adaptor and battery should be charged, stored and used in a location where the temperature is more than 5°C (41°F) but less than 40°C (104°F). Do not store outside or in vehicles.

**BATTERY PACK**

054-3124-0,  
054-7553-4,  
054-7557-6,  
054-2434-8

**CHARGER**

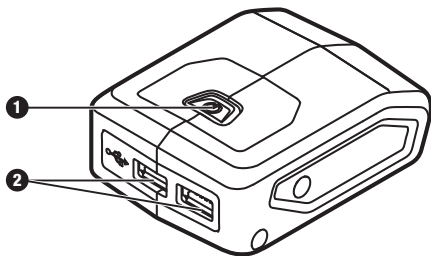
054-3126-6,  
054-7559-2



## PACKAGE CONTENTS:

USB charging adaptor and instruction manual.

## KEY PARTS DIAGRAM



No.	Description
1	On/Off button

No.	Description
2	USB ports



### WARNING!

- Remove the USB charging adaptor from the package and examine it carefully. Do not discard the carton or any packaging material until all parts have been examined.
- Do not allow familiarity with the USB charging adaptor to cause a lack of alertness. A fraction of a second of carelessness is enough to cause severe injury.

**OPERATING INSTRUCTIONS****TO ATTACH THE BATTERY PACK (fig 1)**

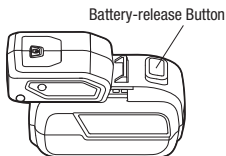
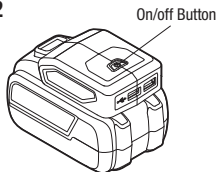
Align the raised rib on the battery pack with the grooves on the USB charging adaptor, and then slide the battery pack onto the USB charging adaptor.

**TO DETACH THE BATTERY PACK (fig 1)**

Depress the battery-release button located on the front of the battery pack to release the battery pack and then pull the battery pack out.

**ON/OFF BUTTON (fig 2)**

1. To turn on the USB charging adaptor, press the on/off button. The button will shine green, indicating that the USB charging adaptor is active.
2. To turn off the USB charging adaptor, press the on/off button. The indicator will be off to indicate that the USB charging adaptor is deactivated.

**fig 1****fig 2****NOTICE:**

- When the USB charging adaptor has not been in use for approximately 3 hours, the USB charging adaptor will automatically turn off and the green light will be off.
- This USB charging adaptor is used to charge cell phone, tablet, e-book and other USB devices.

**WARNING!**

- To reduce the risk of fire, personal injury, and product damage due to a short circuit, never immerse your tool or battery pack in fluid or allow a fluid to flow inside them. Corrosive or conductive fluids, such as seawater, certain industrial chemicals, and bleach or bleach-containing products, etc., can cause a short circuit.
- If any parts are damaged or missing, do not operate this product until the parts are replaced. Use of this product with damaged or missing parts could result in serious personal injury.
- Do not attempt to modify this USB charging adaptor or create accessories not recommended for use with this USB charging adaptor. Any such alteration or modification is misuse and could result in a hazardous condition leading to possible serious injury.

### USING WITH A USB DEVICE

1. Insert a battery pack into the USB charging adaptor.
2. Plug a USB cable (not included) into one of the USB ports in the USB charging adaptor and plug the other end of the cable into your device.
3. Press the on/off button to begin charging the USB device.
4. After charging is completed, if left connected with the USB charging adaptor, the USB charging adaptor will automatically shut off after approximately 3 hours, and the charging process will stop.
5. To reactivate the USB charging adaptor, press the on/off button.
6. When not using or after charging, remove the USB cable and remove the USB charging adaptor from the battery.

### NOTICE:

- For only one port used or two ports used together, the maximum current draw is always 1.5 A.
- If the device draws more than the rated output of the ports, the USB charging adaptor will shut off to protect the battery pack. To reactivate the USB charging adaptor, remove the device and press the on/off button.
- Charging time is dependent upon the device.
- The USB charging adaptor may warm with several continuous cycles; this is part of the normal operation of the USB charging adaptor. Always use the USB charging adaptor in a well-ventilated area.

**MAINTENANCE**

1. Periodically inspect the entire product for damaged, missing, or loose parts such as screws, nuts, bolts, caps, etc. Tighten securely all fasteners and caps and do not operate this product until all missing or damaged parts are replaced.
2. The tool may be cleaned most effectively with a soft, dry cloth. Keep the power ports clean, dry and free of oil or grease. Do not attempt to clean by inserting pointed objects through openings.

**WARNING!**

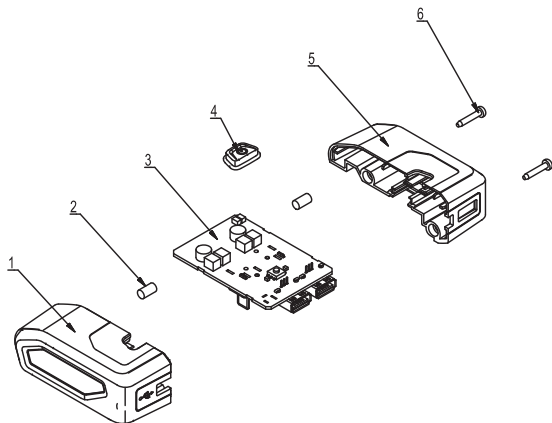
- To avoid serious personal injury, always remove the battery pack from the tool when cleaning or performing any maintenance.
- When servicing, use only identical replacement parts. The use of any other parts may create a hazard or cause damage to the product.
- Do not let brake fluids, gasoline, petroleum-based products, penetrating oil, etc., come into contact with plastic parts. These substances contain chemicals that can damage, weaken, or destroy plastic.

## TROUBLESHOOTING

Problem	Possible causes	Solutions
The USB charging adaptor does not work.	Low battery capacity.	Charge the battery.
	The device draws more than the rated output of the ports.	Remove the device and turn the USB charging adaptor on again.

If the problem remains unsolved after performing the checks described above, call the toll-free helpline at 1-800-689-9928.

## EXPLODED VIEW



No.	Part No.	Description
1	3128052000	Left Housing
2	3123928000	Rubber Pole
3	4891194000	PCB Assembly

No.	Part No.	Description
4	3128780000	Button
5	3128053000	Right Housing
6	5610274000	Self-tapping Screw

If any parts are missing or damaged, or if you have any questions, please call the toll-free helpline at 1-800-689-9928.

This Mastercraft product is guaranteed for a period of **3 years from the date of original retail purchase** against defects in workmanship and materials, except for the following components:

- a) Component A: Batteries, chargers and carrying case, which are guaranteed for a period of 2 years from the date of original retail purchase against defects in workmanship and materials;
- a) Component B: Accessories, which are guaranteed for a period of 1 year from the date of original retail purchase against defects in workmanship and materials.

Subject to the conditions and limitations described below, this product, if returned to us with proof of purchase within the stated warranty period and if covered under this warranty, will be repaired or replaced (with the same model, or one of equal value or specification), at our option. We will bear the cost of any repair or replacement and any costs of labour relating thereto.

### These warranties are subject to the following conditions and limitations:

- a) a bill of sale verifying the purchase and purchase date must be provided;
- b) this warranty will not apply to any product or part thereof which is worn or broken or which has become inoperative due to abuse, misuse, accidental damage, neglect or lack of proper installation, operation or maintenance (as outlined in the applicable owner's manual or operating instructions) or which is being used for industrial, professional, commercial or rental purposes;
- c) this warranty will not apply to normal wear and tear or to expendable parts or accessories that may be supplied with the product that are expected to become inoperative or unusable after a reasonable period of use;
- d) this warranty will not apply to routine maintenance and consumable items such as, but not limited to, fuel, lubricants, vacuum bags, blades, belts, sandpaper, bits, fluids, tune-ups or adjustments;
- e) this warranty will not apply where damage is caused by repairs made or attempted by others (i.e. persons not authorized by the manufacturer);
- f) this warranty will not apply to any product that was sold to the original purchaser as a reconditioned or refurbished product (unless otherwise specified in writing);
- g) this warranty will not apply to any product or part thereof if any part from another manufacturer is installed therein or any repairs or alterations have been made or attempted by unauthorized persons;
- h) this warranty will not apply to normal deterioration of the exterior finish, such as, but not limited to, scratches, dents, paint chips, or to any corrosion or discolouring by heat, abrasive and chemical cleaners; and
- i) this warranty will not apply to component parts sold by and identified as the product of another company, which shall be covered under the product manufacturer's warranty, if any.

**Additional Limitations**

This warranty applies only to the original purchaser and may not be transferred. Neither the retailer nor the manufacturer shall be liable for any other expense, loss or damage, including, without limitation, any indirect, incidental, consequential or exemplary damages arising in connection with the sale, use or inability to use this product.

**Notice to Consumer**

This warranty gives you specific legal rights, and you may have other rights, which may vary from province to province. The provisions contained in this warranty are not intended to limit, modify, take away from, disclaim or exclude any statutory warranties set forth in any applicable provincial or federal legislation.

Made in China

Imported by

Mastercraft Canada Toronto, Canada M4S 2B8