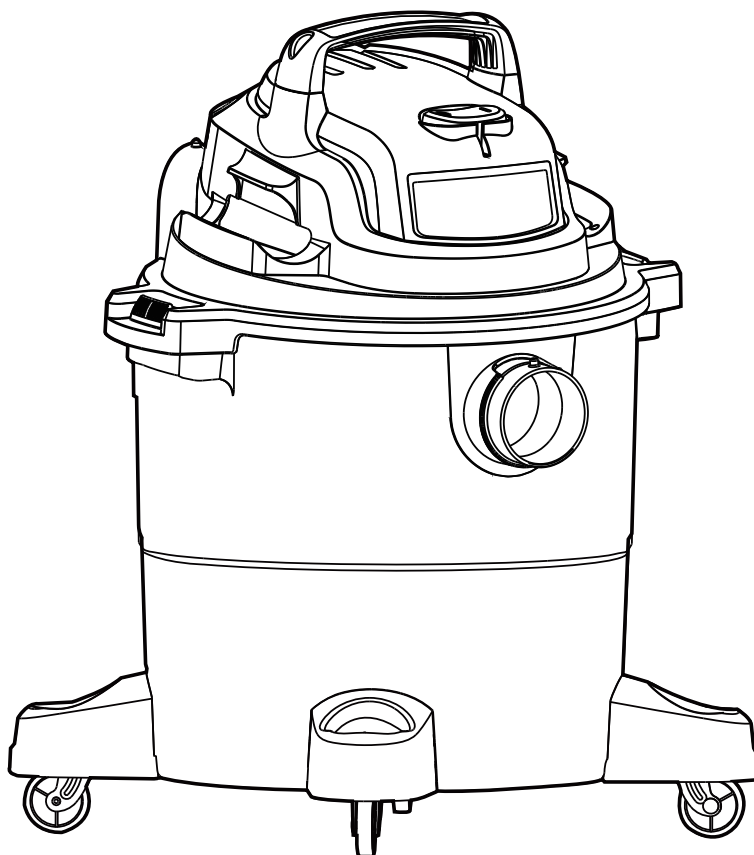




## 22 L (6 U.S. GALLONS) WET/DRY VACUUM

MODEL NO. 054-0381-4



### **IMPORTANT:**

Read and understand this instruction manual thoroughly before using the product.

**INSTRUCTION  
MANUAL**



**TABLE OF CONTENTS**

SPECIFICATIONS	4
EXTENSION CORDS	4
SAFETY WARNINGS	5
KEY PARTS DIAGRAM	8
GENERAL ASSEMBLY INSTRUCTIONS	9
DRY VACUUM OPERATION	12
WET VACUUM OPERATION	14
BLOWER OPERATION	16
MAINTENANCE	18
INSTALLING AND CLEANING REUSABLE CLOTH FILTER	20
INSTALLING AND CLEANING FOAM WET FILTER	22
TROUBLESHOOTING	23
ACCESSORIES	24
EXPLODED VIEW	25
PARTS LIST	26
WARRANTY	27

If any parts are missing or damaged, or if you have any questions, please call our toll-free helpline at 1-800-689-9928



Read and understand this instruction manual thoroughly before using the product. It contains important information for your safety as well as operating and maintenance advice.  
Keep this instruction manual for future use. Should this product be passed on to a third party, then this instruction manual must be included.

Tank size*	22 L (6 U.S. gallons / 4.83 Imperial gallons)
Peak horsepower†	4.0 HP
Power	120 V, 60 Hz, 8 A
Tank	PP
Power cord	1.8 m (6')
Hose	3.2 cm x 2.1 m (1 1/4" x 7')
Water lift‡	158 cm (62 1/4") at end of hose
Airflow‡	65 CFM at end of hose
Noise	80 dBA
Filters	Reusable cloth filter, foam wet filter
Weight	4.6 kg (10 lb 3 oz)

\*Tank Size refers to the actual tank volume and does not reflect capacity available during operation.

† Peak Horsepower is a term used in the wet/dry vac industry for consumer comparison purposes. It does not denote the operational horsepower output of a wet/dry vac, but rather the horsepower output of a motor, including the motor's inertial contribution, achieved in laboratory testing. In actual use, motors do not operate at the peak horsepower shown.

‡ CFM, Water Lift, and Airflow tested to ASTM standard at the end of included hose.

When using an extension cord with your wet/dry vacuum refer to the following table to determine the required A.W.G. wire size. Before using the cleaner make sure the power cord and extension cord are in good working condition. Make repairs or replacements before using the vacuum cleaner. Only use extension cords that are rated for outdoor use.

		Length of Extension Cord			
120V		7.6 m (25')	15.2 m (50')	30.5 m (100')	45.7 m (150')
Ampere rating		A.W.G. Wire Size			
More than	Not more than				
0	6	18	16	16	14
6	10	18	16	14	12
10	12	16	16	14	12
12	16	14	12	Not recommended	

# IMPORTANT SAFETY INSTRUCTIONS

## READ AND UNDERSTAND ALL INSTRUCTIONS BEFORE USING THIS VACUUM.

Read and understand this operator's manual and all labels on the vacuum cleaner before operating. Safety is a combination of common sense, staying alert and knowing how your vacuum works. Use this vacuum only as described in this manual. To reduce the risk of personal injury or damage to your vacuum, use only manufacturer recommended accessories.

## SAVE THIS MANUAL FOR FUTURE REFERENCE.

When using a vacuum, basic precautions should always be followed including the following. **Failure to follow the warnings and instructions may result in explosion, fire, and/or serious injury.**



**WARNING!** To reduce the risk of fire, electric shock or injury:

- Do not run the vacuum unattended.
- Do not use to pick up flammable or combustible liquids, such as gasoline, or use in areas where they may be present.
- Do not vacuum or use this vacuum near flammable liquids, gases, or explosive vapours like gasoline or other fuels, lighter fluids, cleaners, oil-based paints, natural gas, hydrogen, or explosive dust like coal dust, magnesium dust, grain dust, or gun powder. Sparks inside the motor can ignite flammable vapours or dust.
- To reduce the risk of health hazards from vapours or dust, do not vacuum toxic materials.
- Do not use or store near hazardous materials.
- Do not pick up anything that is burning or smoking, such as cigarettes, matches, or hot ashes.
- Do not expose to rain. Store indoors.
- If vacuum is not working as it should, has been dropped, damaged, left outdoors, or dropped into water, return it to a service centre.
- Do not unplug by pulling on cord. To unplug, grasp the plug, not the cord.
- Do not use it with damaged cord or plug.
- Do not pull or carry by cord, use cord as a handle, close a door on cord, or pull cord around sharp edges or corners.
- Keep cord away from heated surfaces.
- Do not run the vacuum over cord.
- Do not handle plug or vacuum with wet hands.
- Do not use without dust bag and/or filters in place.



### CAUTION!

To reduce the risk of injury from moving parts, unplug before servicing.



### WARNING!

To reduce the risk of electric shock, unplug before cleaning or servicing.

- Do not allow vacuum to be used as a toy. Close attention is necessary when used near children.
- To reduce the risk of injury from accidental starting, unplug the power cord before changing or cleaning filter.
- Do not leave vacuum when plugged in. Unplug from outlet when not in use and before servicing.
- Turn off all controls before unplugging.
- Unplug before connecting or disconnecting hose or any other accessories.
- Do not put any object into openings. Do not use with any opening blocked; keep free of dust, lint, hair, and anything that may reduce airflow.
- Keep hair, loose clothing, fingers, and all parts of body away from openings and moving parts.
- Use extra care when cleaning on stairs.
- Use only as described in this manual. Use only manufacturer's recommended attachments.
- This vacuum is provided with double insulation. Use only identical replacement parts. See **DOUBLE INSULATION INSTRUCTIONS**.

### When using as blower:

- Direct air discharge only at work area.
- Do not use wet/dry vacuum as a sprayer.
- Do not direct air at bystanders.
- Keep children away when blowing.
- Wear safety goggles.

## SAVE THESE INSTRUCTIONS

For household use only.

## DOUBLE INSULATION INSTRUCTIONS

This wet/dry vacuum is double insulated, eliminating the need for a separate grounding system. Use only identical replacement parts. Read the instructions for Servicing Double-Insulated Wet/Dry Vacuums before servicing. Use this vacuum as described in this manual.

Observe the following warnings that appear on the motor housing of your vacuum.



### WARNING!

TO REDUCE THE RISK OF ELECTRIC SHOCK, DO NOT EXPOSE TO RAIN. STORE INDOORS.



### WARNING!

FOR YOUR OWN SAFETY, READ AND UNDERSTAND THE OPERATOR'S MANUAL. DO NOT RUN UNATTENDED. DO NOT PICK UP HOT ASHES, COALS, TOXIC, FLAMMABLE OR OTHER HAZARDOUS MATERIALS. DO NOT USE AROUND EXPLOSIVE LIQUIDS OR VAPOURS.



## DOUBLE INSULATED - GROUNDING NOT REQUIRED - WHEN SERVICING USE ONLY IDENTICAL REPLACEMENT PARTS.

The following signal words and meanings are intended to explain the levels of risk associated with this product.

SYMBOL	SIGNAL	MEANING
	<b>DANGER</b>	Indicates an imminently hazardous situation, which, if not avoided, will result in death or serious injury.
	<b>WARNING</b>	Indicates a potentially hazardous situation, which, if not avoided, could result in death or serious injury.
	<b>CAUTION</b>	Indicates a potentially hazardous situation, which, if not avoided, may result in minor or moderate injury.
	<b>NOTICE</b>	(Without Safety Alert Symbol) Indicates a situation that may result in property damage.



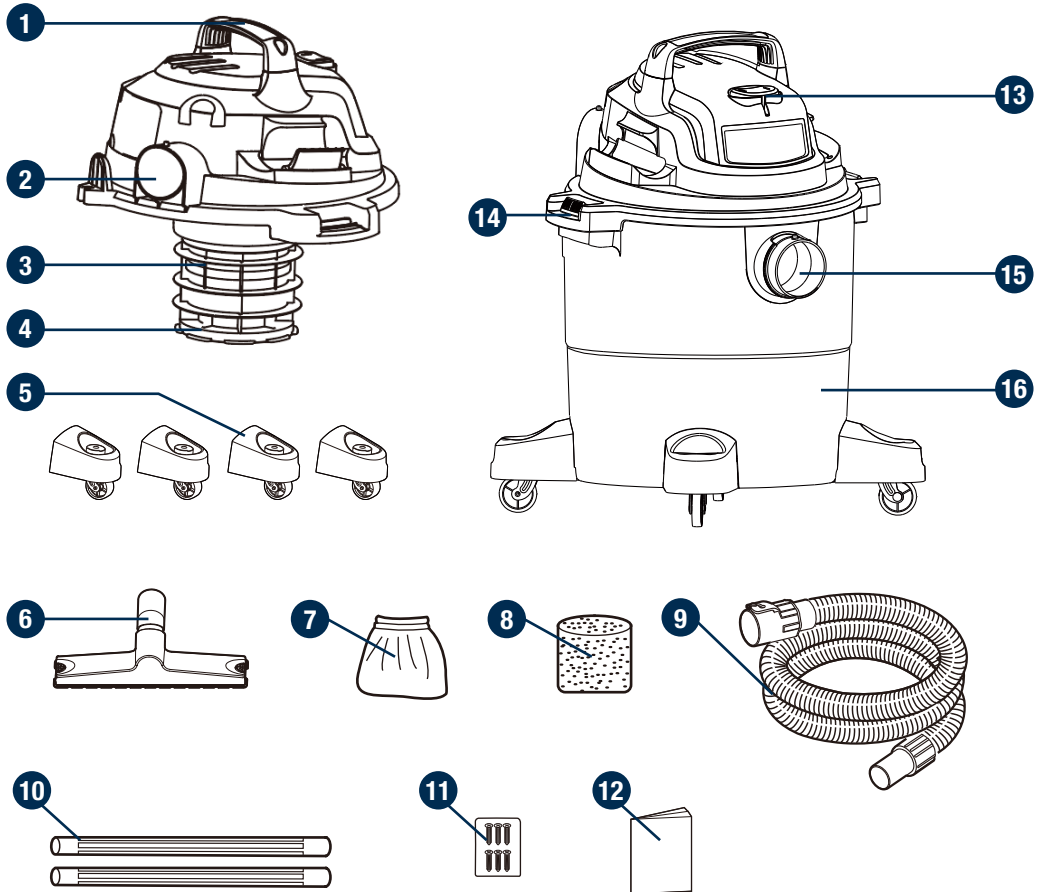
### CAUTION!

DO NOT VACUUM DRYWALL DUST, FIREPLACE SOOT, OR ASH WITH STANDARD WET/DRY FILTER. THESE ARE FINE DUSTS WHICH WILL NOT BE CAPTURED BY THE FILTER AND MAY CAUSE DAMAGE TO THE MOTOR. WHEN VACUUMING FINE DUST, USE A FINE DUST FILTER.



### WARNING!


SERVICING DOUBLE-INSULATED WET/DRY VACUUMS  
WITH A DOUBLE-INSULATED WET/DRY VACUUM, TWO SYSTEMS OF INSULATION ARE PROVIDED INSTEAD OF GROUNDING. NO GROUNDING MEANS IS PROVIDED ON A DOUBLE-INSULATED APPLIANCE, NOR SHOULD A MEANS FOR GROUNDING BE ADDED. SERVICING A DOUBLE INSULATED WET/DRY VACUUM REQUIRES EXTREME CARE AND KNOWLEDGE OF THE SYSTEM AND SHOULD BE DONE ONLY BY QUALIFIED SERVICE PERSONNEL. REPLACEMENT PARTS FOR A DOUBLE-INSULATED WET/DRY VACUUM MUST BE IDENTICAL TO THE PARTS THEY REPLACE. YOUR DOUBLE-INSULATED WET/DRY VAC IS MARKED WITH THE WORDS 'DOUBLE INSULATED' AND THE SYMBOL (SQUARE WITHIN A SQUARE) MAY ALSO BE MARKED ON THE APPLIANCE.



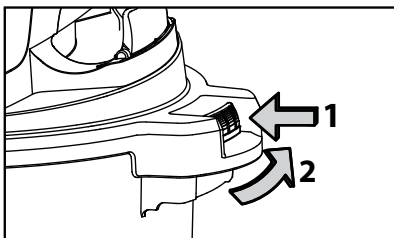
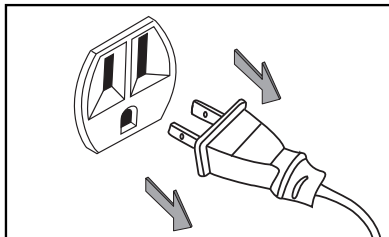
No.	Description	No.	Description
1	Handle	9	Hose
2	Blower port	10	Extension wand (x2)
3	Filter cage	11	6 Screws (bag)
4	Safety float valve	12	Operator's manual
5	Castors (x4)	13	On/Off switch
6	Floor brush / squeegee nozzle	14	Latch (x2)
7	Reusable cloth filter	15	Vacuum port
8	Foam wet filter	16	Collection tank



## UNPACKING YOUR WET/DRY VACUUM AND GENERAL ASSEMBLY

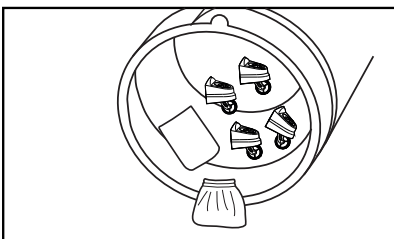
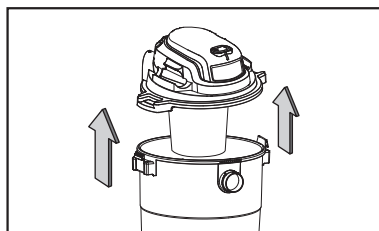
A cross-head screwdriver is required. 

- 1 Verify that the power cord is disconnected from the outlet.



- 2 Undo the latches.

- 3 Lift the powerhead off the collection tank.



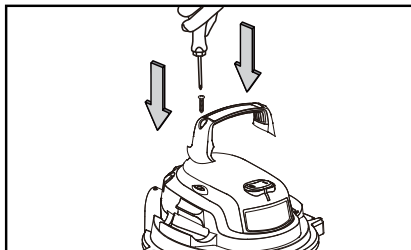
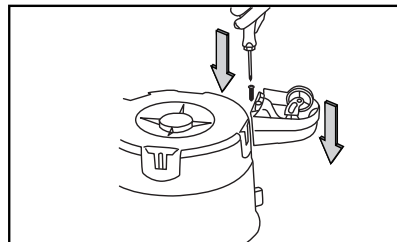
- 4 Remove the contents from inside the collection tank; make sure you have all contents as listed on page 8.



### WARNING!

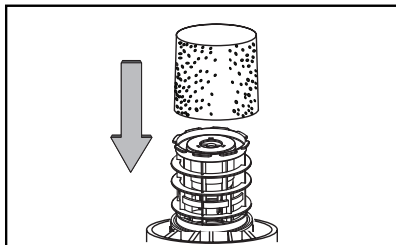
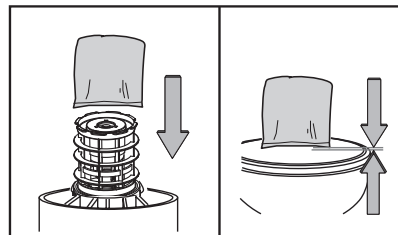
Do not plug the power cord into a power outlet. Make sure the plug is disconnected before assembling the wet/dry vacuum. To reduce the risk of electric shock, do not expose to rain.

- 5** Turn the collection tank upside down and insert the four caster feet into the slots on the collection tank and tighten with supplied screws. Verify that the casters are mounted correctly. Do not over-tighten screws.



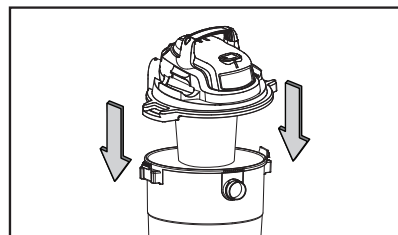
- 6** Insert the handle into the slots located on the top of the powerhead and secure it with the screws provided. Do not over-tighten the screws.

- 7** Your vacuum comes ready for dry vacuum cleaning. If the reusable cloth filter is not installed, refer to page 20 for installation instructions.

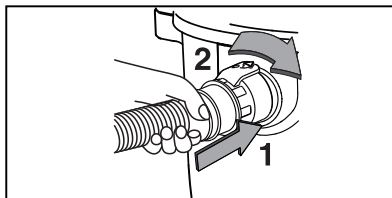
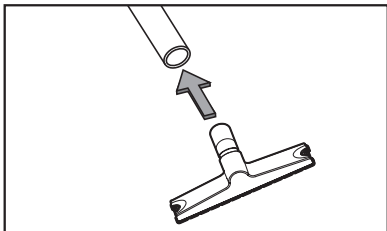


- 8** For wet vacuum cleaning, remove the reusable cloth filter, and install the supplied foam wet filter. See page 22 for the foam wet filter installation instructions.

- 9** Place the powerhead back on the collection tank aligning the top section with the latches, and snap into place.



- 10** Insert the locking end of the hose into the vacuum port on the collection tank and turn clockwise to lock into place.



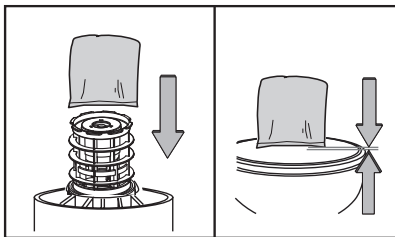
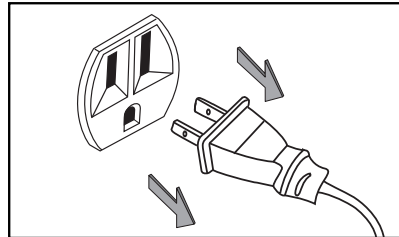
- 11** Choose the desired accessory and insert it onto the end of the hose or extension wand.

## POLARIZED PLUG

To reduce the risk of electric shock, this appliance has a polarized plug (one blade wider than the other). This plug will fit in a polarized outlet only one way. If the plug does not fit fully in the outlet, reverse the plug. If it still does not fit, contact a qualified electrician to install the proper outlet. Do not change the plug in any way. Double insulation ☐ eliminates the need for the three wire grounded power cord and grounded power supply system.

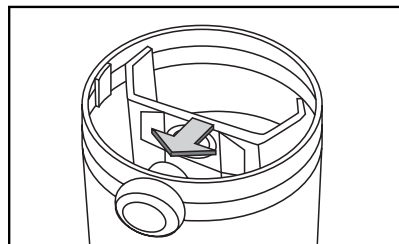
**DRY VACUUMING**

- 1 Verify that the power cord is disconnected from the outlet.



- 2 In order to prepare your vacuum for dry vacuuming, make sure the reusable cloth filter completely covers the filter cage. Your wet/dry vacuum comes with the reusable cloth filter pre-installed. For installation instructions, see page 20.

- 3 Optional: For improved dust filtering, fit the collection bag flange onto the inlet port, taking care not to damage the bag. Dust bags sold separately.

**WARNING!**

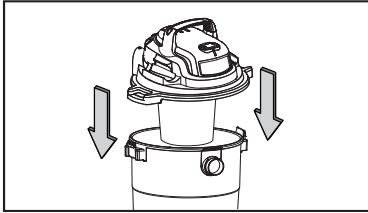
Be sure to read, understand, and apply information entitled "Safety Warnings". Do not vacuum in areas with flammable gases, vapours, or explosive dusts in the air. Flammable gases or vapours include, but are not limited to: lighter fluid, solvent-type cleaners, oil-based paints, gasoline, alcohol, or aerosol sprays. Explosive dusts include but are not limited to: coal, magnesium, grain, or gun powder. To reduce the risk of health hazards from vapours or dust, do not vacuum toxic materials.

**WARNING!**

Do not plug the power cord into a power outlet. Make sure the plug is disconnected before changing the filters.

**CAUTION:**

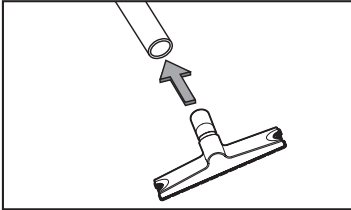
Do not vacuum drywall dust, fireplace soot, or ash with standard wet/dry filter. These are fine dusts which will not be captured by the filter and may cause damage to the motor. When vacuuming fine dust use a fine dust filter (sold separately).



- 4** Place the powerhead back on the collection tank and secure it in place using the latches.

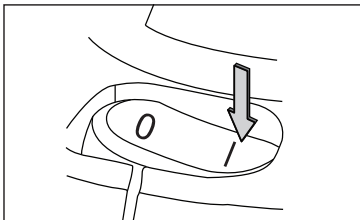
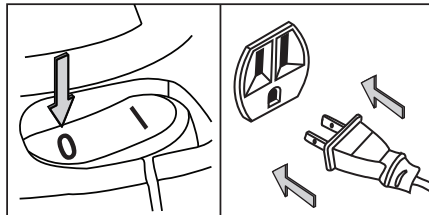
## OPERATING INSTRUCTIONS: DRY VACUUMING

- 5** Insert the locking end of the hose into the vacuum port on the collection tank and turn clockwise to lock it into place.



- 6** Push the required accessory onto the free end of the hose or extension wand.

- 7** Verify that the switch is in the 'O' OFF position before plugging the power cord into the power outlet. Plug the power cord into the outlet.



- 8** Turn the vacuum on by flipping the switch to the 'I' ON position and begin vacuuming.

- 9** Once you have completed vacuuming, flip the switch to the 'O' OFF position and unplug the power cord from the outlet.

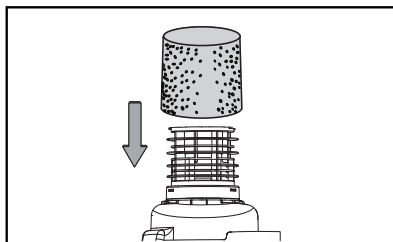
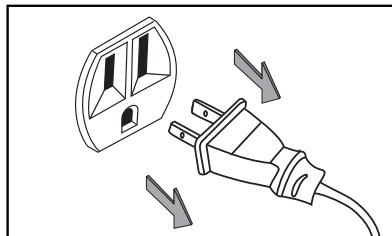
O = OFF I = ON

**DO NOT USE THE REUSABLE CLOTH FILTER FOR LIQUID VACUUMING.**

**DO NOT USE COLLECTION BAG FOR LIQUID VACUUMING.**

## LIQUID VACUUMING

- 1 Verify that the power cord is disconnected from the outlet. Make sure that the collection tank is clean and free of dust and dirt.

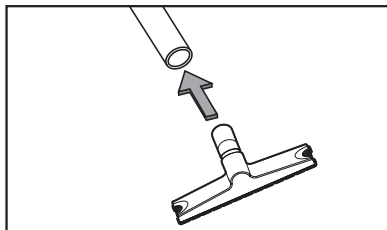


- 2 Remove the reusable cloth filter, then carefully install the foam wet filter over the filter cage and place the powerhead back on the collection tank. For foam wet filter installation instructions, see page 22.

DO NOT USE THE REUSABLE CLOTH FILTER FOR LIQUID VACUUMING.

## OPERATING INSTRUCTIONS: WET VACUUMING

- 3 Insert the locking end of the hose into the vacuum port on the collection tank and turn clockwise to lock it into place.



- 4 Push the required accessory onto the free end of the hose or extension wand.



### WARNING!

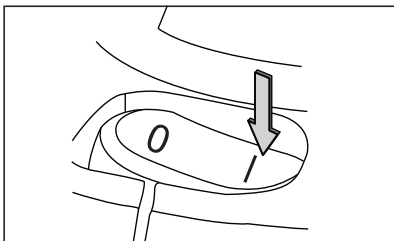
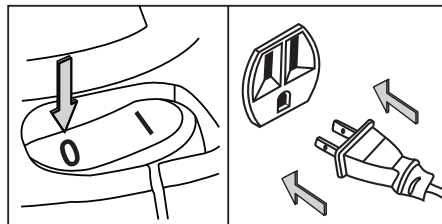
Be sure to read, understand, and apply information entitled "Safety Warnings". Do not vacuum in areas with flammable gases, vapours, or explosive dusts in the air. Flammable gases or vapours include, but are not limited to: lighter fluid, solvent-type cleaners, oil-based paints, gasoline, alcohol, or aerosol sprays. Explosive dusts include but are not limited to: coal, magnesium, grain, or gun powder. To reduce the risk of health hazards from vapours or dust, do not vacuum toxic materials.



### WARNING!

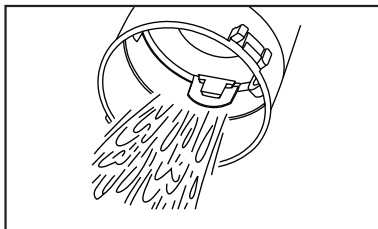
Do not plug the power cord into a power outlet. Make sure the plug is disconnected before changing the filters.

- 5** Verify that the switch is in the 'O' OFF position before plugging the power cord into the power outlet. Plug the power cord into the outlet.



- 6** Turn the vacuum on by flipping the switch to the 'I' ON position and begin vacuuming.

- 7** Once you have completed vacuuming, flip the switch to the 'O' OFF position and unplug the power cord from the outlet.



- 8** After use, empty the collection tank, clean, and dry the inside and outside of the collection tank.



## IMPORTANT!

When vacuuming large quantities of liquids, do not immerse the nozzle completely in the liquid; leave a gap at the tip of the nozzle opening to allow air inflow. The machine is fitted with a float valve that stops the suction action when the collection tank reaches its maximum capacity. You will notice an increase in motor speed. When this happens, turn off the machine, disconnect from power supply, and drain the liquid into a suitable receptacle or drain. To continue vacuuming, refit the powerhead to the collection tank. After wet vacuuming, turn the machine off and remove plug from the power supply. Empty the collection tank, clean, and dry the inside and outside before storage.



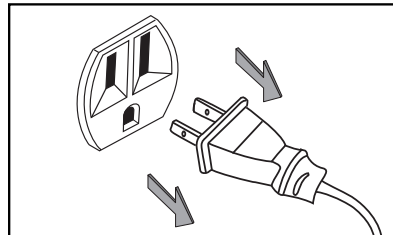
## REMEMBER!

The foam wet filter must be removed after wet vacuuming and the reusable cloth filter must be installed before dry vacuuming again.

## BLOWER OPERATION

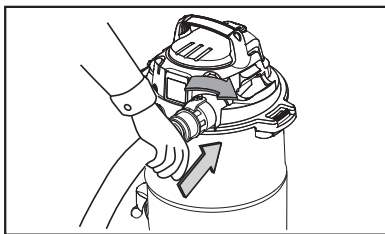
This wet/dry vacuum has blowing capabilities. To use the blower feature, follow the instructions listed below.

- 1 Verify that the power cord is disconnected from the outlet.



- 2 Make sure the collection tank is empty before using it as a blower. Clear all dirt and debris from the hose and collection tank.

- 3 Remove the hose from the vacuum port.



- 4 Insert the locking end of the hose into the blower port on the back of the powerhead and lock it into place.



### WARNING!

Always wear safety goggles complying with ANSI Z87.1 (or in Canada, CSAZ94.3) before using blower.



### WARNING!

Keep bystanders clear from blowing debris.

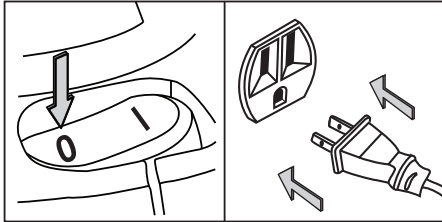
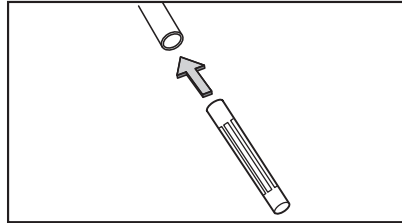


### WARNING!

Wear a dust mask if blowing creates dust that could be inhaled.

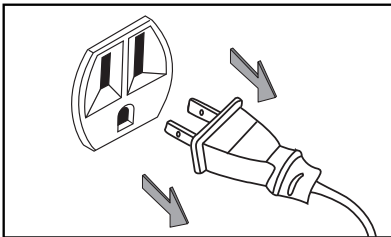
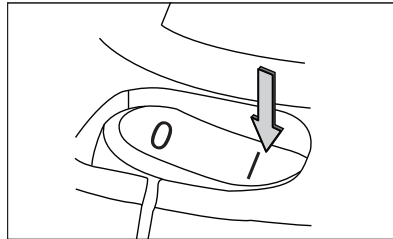


- 5** Choose the desired accessory and insert it onto the free end of the hose.



- 6** Verify that the power switch is in the '0' OFF position before plugging the power cord into the outlet. Plug the power cord into the outlet.

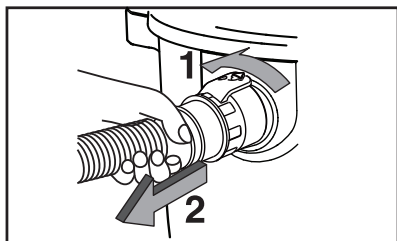
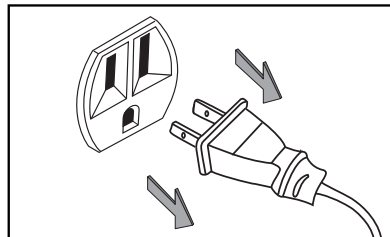
- 7** Before turning on the vacuum, firmly hold the loose end of the hose. Turn the vacuum on by flipping the switch to the 'I' ON position.



- 8** Once you have completed blowing, flip the power switch to the '0' OFF position and unplug the power cord from the outlet.

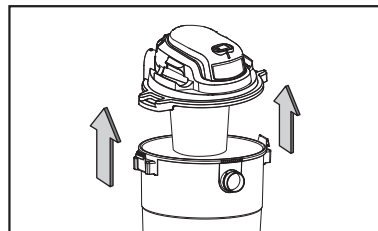
**EMPTYING THE COLLECTION TANK**

- 1 Verify that the power cord is disconnected from the outlet.



- 2 Disconnect the hose from the vacuum.

- 3 Undo the latches and remove the powerhead from the collection tank. Place powerhead on a soft, clean surface upside down.



- 4 Clear all dirt or debris from the collection tank and hose into a proper waste container.

**WARNING:**

Always disconnect the plug from the power outlet before removing the powerhead from collection tank.

- 5 Clean or replace the filters.
- 6 Check the hose, accessories, and power cord to ensure that they have not been damaged.
- 7 Place powerhead back on collection tank and secure latches.

## STORAGE

Before storing your vacuum, the collection tank should be emptied and cleaned. The accessories should be cleaned and stored so they can be readily available when needed. Store the wet/dry vacuum indoors.

## REPAIRS

Repairs for this wet/dry vacuum should be performed only by qualified service personnel using only identical replacement parts.

## NOTICE!

The filters included are made of high-quality materials designed to stop small dust particles. The reusable cloth filter should be used for dry pick-up only. A dry reusable cloth filter is necessary to pick up dust. If the reusable cloth filter is wet, it will clog quickly and be very difficult to clean. Handle the filter carefully when removing it for cleaning and replacing it. Check the filters for tears or small holes. A small hole can let dust pass through and out of the filter. Do not use a filter with holes or tears; replace it immediately.

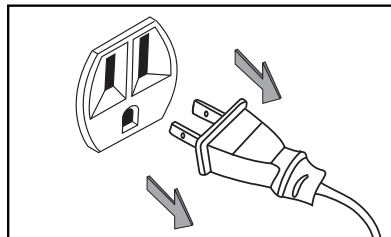


## IMPORTANT!

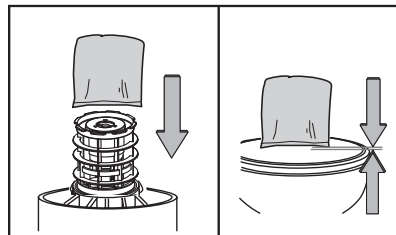
Clean or change the filter regularly for the best performance. **ALWAYS USE THE REUSABLE CLOTH FILTER FOR DRY VACUUMING.** If the machine is used without the reusable cloth filter, the motor will burn out and the warranty will be void. Always keep spare filters on hand.

**INSTALLING CARTRIDGE FILTER**

- 1 Verify that the power cord is disconnected from the outlet.



- 2 Remove the powerhead and place in upside-down position.

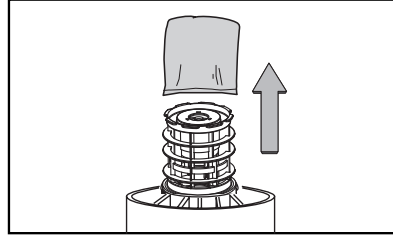


- 3 Install the reusable cloth filter over the filter cage, making sure the cage is completely covered.

- 4 Place the powerhead back onto the collection tank.

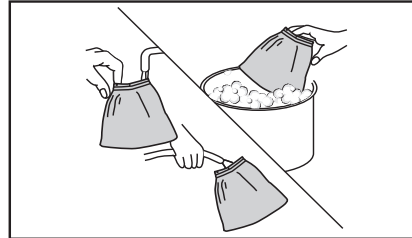
## REMOVING AND CLEANING REUSABLE CLOTH FILTER

- 1 With the removed powerhead in an upside-down position, carefully remove the reusable cloth filter from the filter cage.



- 2 Clean the reusable cloth filter by gently tapping or brushing dirt off. Cleaning should not be done indoors in living areas. For optimal performance, a new filter is recommended.

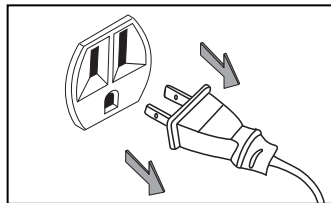
- 3 Use a mild soap and water solution to wash reusable cloth filter and rinse with clean water.



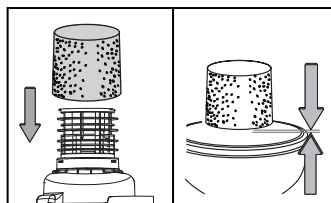
- 4 Allow the wet filter to air dry completely before storing or installing onto the filter cage.

**INSTALLING FOAM WET FILTER**

- 1 Verify that the power cord is disconnected from the outlet.



- 2 Remove the powerhead and place in an upside-down position. Follow instructions to remove the reusable cloth filter on page 21.

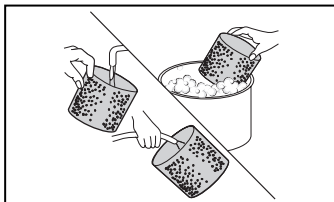
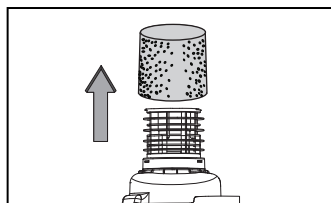


- 3 Carefully slide foam wet filter down over the filter cage making sure the cage is completely covered.

- 4 Place the powerhead onto the collection tank.

**CLEANING FOAM WET FILTER**

- 1 With the removed powerhead in an upside-down position, carefully remove the foam wet filter.



- 2 Use a mild soap and water solution to wash the foam wet filter and rinse with clean water.

- 3 Allow the wet filter to air dry completely before storing or installing onto the filter cage.

Problem	Possible Causes	Corrective Action
The wet/dry vacuum will not operate.	No power supply.	Check the power supply, cord, breakers, and fuses.
	Faulty power cord.	Unplug and check the power cord. If damaged, have it repaired by a professional.
	Collection tank is full.	Empty the collection tank.
	Switch in the wrong position.	Press the ON 'I' button on the powerhead.
The dust comes out from the motor cover.	The reusable cloth filter is missing or damaged.	Attach or replace the reusable cloth filter.
	Vacuum has been used to collect fine dust, such as dry wall dust, fireplace soot, or ash, without a fine dust filter.	Remove the reusable cloth filter and install the appropriate fine dust filter.
Reduced efficiency and motor/speed vibration.	There are blockages in the nozzle, hose, or the collection tank inlets.	Unplug and check nozzle, hose and collection tank inlets for blockages.
	The reusable cloth filter is clogged by fine dust.	Take off the filter and clean it or install a new reusable cloth filter.



## WARNING:

To reduce the risk of electric shock, unplug before troubleshooting.

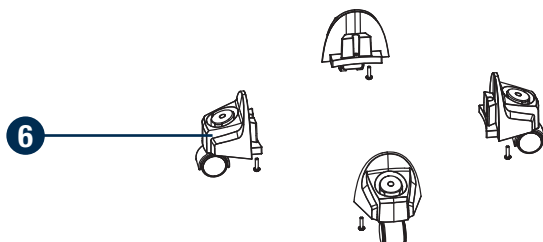
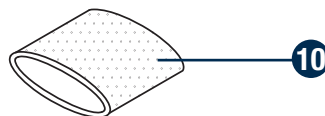
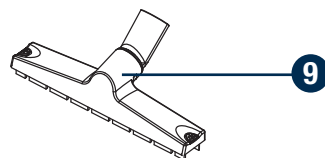
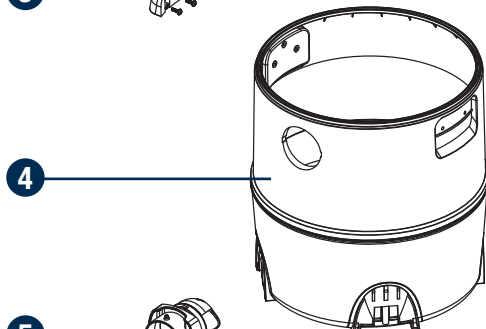
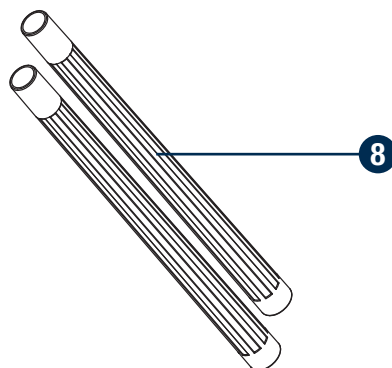
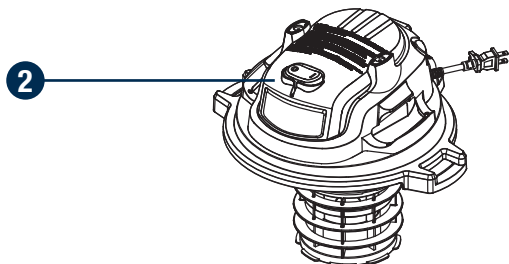
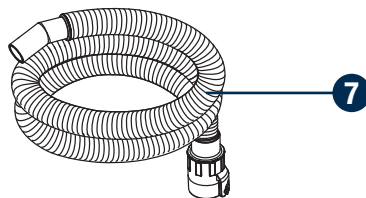
**Additional accessories for your Mastervac® Wet/Dry Vacuum are available.****Consumables**

054-0035-0	Foam Wet Filter
054-0148-2	Dry Reusable Filter
054-0150-4	Household Collector Bag
054-0212-8	Fine Dust High Efficiency Collector Bag
054-0262-8	Tear-resistant Wet/Dry Collector Bag
054-0008-6	Regular Cartridge Filter
054-0255-6	Fine Cartridge Filter
054-0159-6	HEPA Cartridge Filter

**1 1/4" (3.1 cm) Accessories**

054-0047-2	Hose
054-0120-6	Multi-surface Nozzle
054-0009-4	Micro Kit
054-0084-2	Round Brush
054-0085-0	Crevice Tool
054-0086-8	Utility Nozzle
054-0087-6	Floor Nozzle
054-0128-0	Extension Wand
054-0079-6	Claw Utility Nozzle
054-0080-0	3.1 X 6.35 cm (1 1/4" X 2 1/2") Adaptor
054-0227-4	Crevice Tool and Soft Bristle Brush
054-0226-6	Drain Hero





No.	Description
1	Handle
2	Head assembly
3	Latch (x2)
4	22 L (6 U.S. gallon / 4.83 Imperial gallon) tank
5	Hose inlet assembly
6	Casters (x4)
7	Hose
8	Extension wand (x2)
9	Floor brush / squeegee nozzle
10	Foam wet filter
11	Reusable cloth filter

**If any parts are missing or damaged, or if you have any questions, please call the toll-free helpline at 1-800-689-9928.**

### 3-YEAR LIMITED WARRANTY

This Mastervac<sup>TM/MC</sup> product is guaranteed for a period of three (3) years from the date of original retail purchase against defects in materials and workmanship.

Subject to the conditions and limitations described below, this product, if returned to us with proof of purchase within the stated warranty period and if covered under this warranty, will be repaired or replaced (with the same model, or one of equal value or specification), at our option.

We will bear the cost of any repair or replacement and any costs of labour relating thereto.

This warranty is subject to the following conditions and limitations:

- a) a bill of sale verifying the purchase and purchase date must be provided;
- b) this warranty will not apply to any product or part thereof which is worn or broken or which has become inoperative due to abuse, misuse, accidental damage, neglect or lack of proper installation, operation or maintenance (as outlined in the applicable owner's manual or operating instructions) or which is being used for industrial, professional, commercial or rental purposes;
- c) this warranty will not apply to normal wear and tear or to expendable parts or accessories that may be supplied with the product which are expected to become inoperative or unusable after a reasonable period of use;
- d) this warranty will not apply to routine maintenance and consumable items such as, but not limited to, fuel, lubricants, vacuum bags, blades, belts, sandpaper, bits, fluids, tune-ups or adjustments;
- e) this warranty will not apply where damage is caused by repairs made or attempted by others (i.e., persons not authorized by the manufacturer);
- f) this warranty will not apply to any product that was sold to the original purchaser as a reconditioned or refurbished product (unless otherwise specified in writing);
- g) this warranty will not apply to any product or part thereof if any part from another manufacturer is installed therein or any repairs or alterations have been made or attempted by unauthorized persons;
- h) this warranty will not apply to normal deterioration of the exterior finish, such as, but not limited to, scratches, dents, paint chips, or to any corrosion or discolouring by heat, abrasive and chemical cleaners; and
- i) this warranty will not apply to component parts sold by and identified as the product of another company, which shall be covered under the product manufacturer's warranty, if any.

### Additional Limitations

This warranty applies only to the original purchaser and may not be transferred. Neither the retailer nor the manufacturer shall be liable for any other expense, loss or damage, including, without limitation, any indirect, incidental, consequential or exemplary damages arising in connection with the sale, use or inability to use this product.

### Notice to Consumer

This warranty gives you specific legal rights, and you may have other rights, which may vary from province to province. The provisions contained in this warranty are not intended to limit, modify, take away from, disclaim or exclude any statutory warranties set forth in any applicable provincial or federal legislation.

Made in China

Imported by  
Trifleaf Distribution Trifeuil Toronto, Canada  
M4S 2B8