

# MAXIMUM<sup>®</sup>

## 30 L (8 U.S. Gallons)

### HEPA Certified Wet/Dry Vacuum



**Model no. 054-0338-0**

**IMPORTANT:**

Please read this manual carefully before using this product, and save it for reference.

**INSTRUCTION  
MANUAL**



<b>TABLE OF CONTENTS</b>	<b>PAGE</b>
TECHNICAL SPECIFICATIONS	4
SAFETY GUIDELINES	5
SYMBOLS	8
KEY PARTS DIAGRAM	9
GENERAL ASSEMBLY INSTRUCTIONS	11
DRY VACUUM OPERATION	15
WET VACUUM OPERATION	18
MAINTENANCE	20
HEPA CARTRIDGE FILTER AND MICROFIBRE PRE-FILTER	22
FOAM WET FILTER	24
HEPA MATERIAL EXHAUST FILTER	25
WHEN TO CHANGE FILTERS	27
TROUBLESHOOTING	28
ACCESSORIES	29
EXPLODED VIEW	30
PARTS LIST	31
WARRANTY	32

**NOTE:** If any parts are missing or damaged, or if you have any questions, please call our toll-free helpline at 1-888-670-6682.



### **SAVE THESE INSTRUCTIONS**

This manual contains important safety and operating instructions. Read all instructions and follow them when using the product.

**SPECIFICATIONS**

Tank size*	30 L (8 U.S. gallons)
Power	120 V, 60 Hz, 11 A
Tank	Polypropylene
Hose	3.8 cm x 3 m (1 1/2" x 10')
Water lift†	218 cm (86") at end of hose
Airflow†	87 CFM at end of hose
Noise	73 dBA
Filters	HEPA Cartridge Filter, Microfibre Pre-filter, Foam Sleeve/Filter, High Efficiency Collection Bag, HEPA Material Exhaust Filter
Weight	12.7 kg (28 lb)

\* Tank Size refers to the actual tank volume, and does not reflect capacity available during operation.

† Water Lift and Airflow tested to ASTM standard at the end of included hose.

## IMPORTANT SAFETY INSTRUCTIONS

**READ AND UNDERSTAND ALL INSTRUCTIONS BEFORE USING THIS VACUUM.**

Read and understand this operator's manual and all labels on the vacuum cleaner before operating. Safety is a combination of common sense, staying alert and knowing how your vacuum works. Use this vacuum only as described in this manual. To reduce the risk of personal injury or damage to your vacuum, use only manufacturer recommended accessories.

## SAVE THIS MANUAL FOR FUTURE REFERENCE.

When using a vacuum, basic precautions should always be followed including the following. Failure to follow the warnings and instructions may result in explosion, fire, and/or serious injury.



**WARNING:** TO REDUCE THE RISK OF FIRE, ELECTRIC SHOCK OR INJURY:

- Do not run the vacuum unattended.
- Do not use to pick up flammable or combustible liquids, such as gasoline, or use in areas where they may be present.
- Do not vacuum, or use this wet/dry vacuum near flammable liquids, gases, or explosive vapours like gasoline or other fuels, lighter fluids, cleaners, oil-based paints, natural gas, hydrogen, or explosive dusts like coal dust, magnesium dust, grain dust, or gun powder. Sparks inside the motor can ignite flammable vapours or dust.
- To reduce the risk of health hazards from vapours or dusts, do not vacuum toxic materials.
- Do not store near hazardous materials.
- Do not pick up anything that is burning or smoking, such as cigarettes, matches, or hot ashes.
- Do not expose to rain. Store indoors.
- If vacuum is not working as it should, has been dropped, damaged, left outdoors, or dropped into water, return it to a service centre.
- Do not unplug by pulling on cord. To unplug, grasp the plug, not the cord.
- Do not use it with damaged cord or plug.
- Do not pull or carry by cord, use cord as a handle, close a door on cord, or pull cord around sharp edges or corners.
- Keep cord away from heated surfaces.
- Do not run the vacuum over cord.
- Do not handle plug or vacuum with wet hands.
- Do not use without dust bag and/or filters in place.
- Do not allow the vacuum to be used as a toy. Close attention is necessary when used near children.
- To reduce the risk of injury from accidental starting, unplug the power cord before changing or cleaning filter.
- Do not leave vacuum when plugged in. Unplug from outlet when not in use and before servicing.
- Turn off all controls before unplugging.
- Unplug before connecting or disconnecting hose or any other accessories.

- Do not put any object into openings. Do not use with any opening blocked; keep free of dust, lint, hair, and anything that may reduce airflow.
- Keep hair, loose clothing, fingers, and all parts of body away from openings and moving parts.
- Use extra care when cleaning on stairs.
- Use only as described in this manual. Use only manufacturer's recommended attachments.
- This vacuum is provided with double insulation. Use only identical replacement parts. See Servicing of Double-Insulated Wet/Dry Vacuums.
- When using for HEPA EPA RRP clean-up tasks, use only manufacturer certified HEPA filters.
- Even when used with a HEPA filter, extremely small particles may pass through the filter; always wear appropriate protective safety equipment.

## SAVE THESE INSTRUCTIONS

For household and commercial use.



### WARNING:

When using this vacuum for EPA Lead Based Paint Renovation, Repair and Painting Program (RRP), it is not recommended for vacuuming carpets and rugs.



### WARNING:

If filters are contaminated or have been used, they must be disposed of properly, prior to performing wet vacuuming operation.



### CAUTION:

To reduce the risk of injury from moving parts, unplug before servicing.



### WARNING:

To reduce the risk of electric shock, unplug before cleaning or servicing.

### DOUBLE INSULATION INSTRUCTIONS

This wet/dry vacuum is double-insulated, eliminating the need for a separate grounding system. Use only identical replacements parts. Read the instructions for Servicing of Double-Insulated Wet/Dry Vacuums before servicing. Use this vacuum as described in this manual.

Observe the following warnings that appear on the motor housing of your vacuum.



**DOUBLE INSULATED—GROUNDING NOT REQUIRED—WHEN SERVICING, USE ONLY IDENTICAL REPLACEMENT PARTS.**



#### **WARNING:**

To reduce the risk of electric shock, do not expose to rain. store indoors.



#### **WARNING:**


For your own safety, read and understand the operator's manual. Do not run unattended. Do not pick up hot ashes, coals, toxic, or flammable materials. Do not use around explosive liquids or vapours.



#### **WARNING:**

**Servicing of Double-Insulated Wet/Dry Vacuums**

With a double-insulated wet/dry vacuum, two systems of insulation are provided instead of grounding. No grounding means is provided on a double-insulated appliance, nor should a means for grounding be added. Servicing a double insulated wet/dry vacuum requires extreme care and knowledge of the system, and should be done only by qualified service personnel. Replacement parts for a double-insulated wet/dry vacuum must be identical to the parts they replace.

Your double-insulated wet/dry vac is marked with the words 'double insulated' and the symbol  (square within a square) may also be marked on the appliance.




**EXTENSION CORDS**

When using an extension cord with your wet/dry vacuum, refer to the following table to determine the required A.W.G. wire size. Before using the cleaner, make sure the power cord and extension cord are in good working condition. Make repairs or replacements before using the vacuum cleaner. Only use extension cords that are rated for outdoor use.

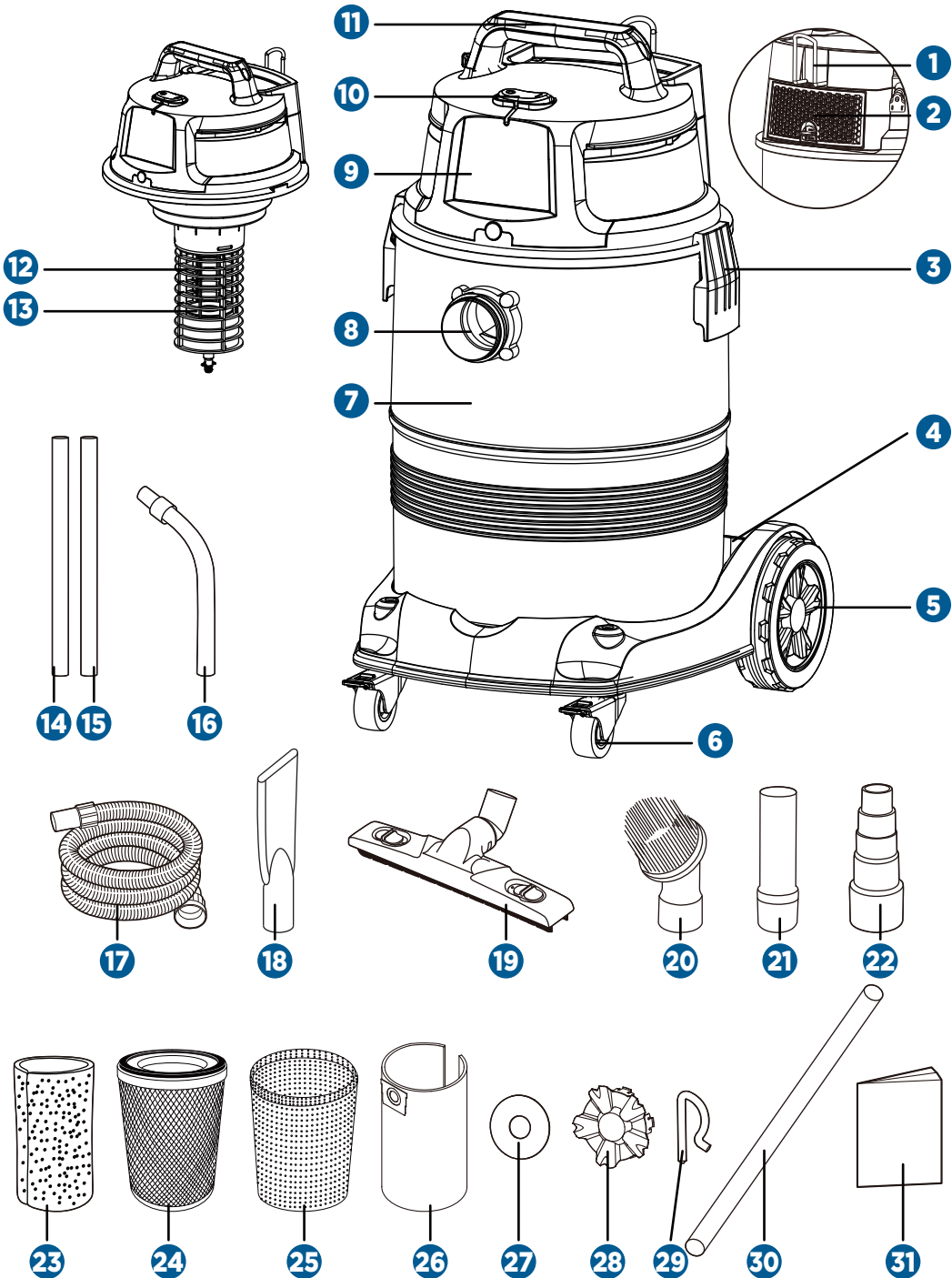
		Length of Extension Cord			
120V		7.6 m (25')	15.2 m (50')	30.5 m (100')	45.7 m (150')
Ampere rating		A.W.G. Wire Size			
More than	Not more than				
0	6	18	1c	16	14
6	10	18	16	14	12
10	12	16	16	14	12
12	16	14	12	Not recommended	

The following signal words and meanings are intended to explain the levels of risk associated with this product.

**SYMBOL SIGNAL****MEANING**

	<b>DANGER</b>	Indicates an imminently hazardous situation, which, if not avoided, will result in death or serious injury.
	<b>WARNING</b>	Indicates a potentially hazardous situation, which, if not avoided, could result in death or serious injury.
	<b>CAUTION</b>	Indicates a potentially hazardous situation, which, if not avoided, may result in minor or moderate injury.
	<b>NOTICE</b>	(Without Safety Alert Symbol) Indicates a situation that may result in property damage.





No.	Description	No.	Description
1	Power Cord Hook	17	Hose
2	HEPA Material Exhaust Filter	18	Crevice Tool
3	Latch (x2)	19	Floor Brush/Squeegee Nozzle
4	Accessory Storage	20	Round Dust Brush
5	Rear Wheel (x2)	21	Metal Accessory Adaptor
6	Locking Castor (x2)	22	Power Tool Adaptor
7	Collection Tank	23	Foam Sleeve/Wet Filter
8	Vacuum Port	24	HEPA Cartridge Filter
9	Powerhead	25	Microfibre Pre-filter
10	On/Off Switch	26	High-Efficiency Collection Bag
11	Handle	27	Washer (x4)
12	Filter Cage	28	Hub Cap (x2)
13	Float Valve	29	'R' (Lock Pin) (x2)
14	Locking Steel Extension Wand #1	30	Wheel Axle
15	Locking Steel Extension Wand #2	31	Operator's Manual
16	Steel Elbow with Air Control		

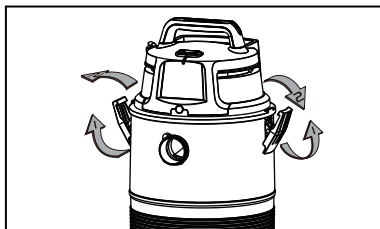
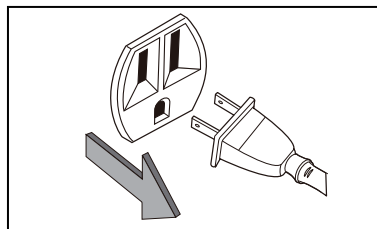
**A cross-head screwdriver is required.**



This HEPA vacuum is supplied with a certified HEPA filter that has been tested by an independent lab to IEST-RP-CC001 that meets the EPA's definition of a HEPA vacuum (must be capable of trapping 99.97% of particles down to 0.3 microns in diameter). It can be used to pick up materials like sawdust and gravel, as well as ultra fine materials like drywall dust and cold fireplace ash.

### UNPACKING YOUR WET/DRY VACUUM AND GENERAL ASSEMBLY

- 1 Verify that the power cord is disconnected from the outlet.



- 2 Undo the latches.



#### WARNING:

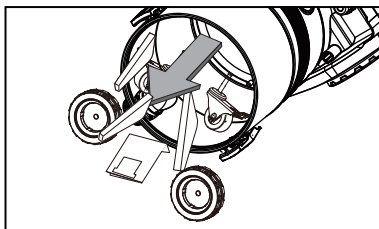
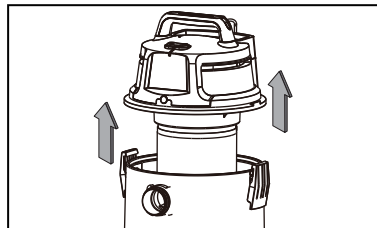
Do not plug the power cord into a power outlet. Make sure the plug is disconnected before assembling the wet/dry vacuum. To reduce the risk of electric shock, do not expose to rain.



#### CAUTION:

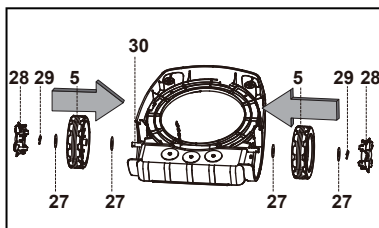
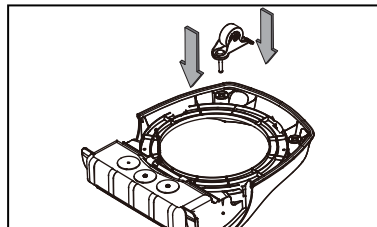
This vacuum has been specifically designed to clean up hazardous dust. Special filters reduce the incidence of airborne dust that would be created by other methods of cleaning. During the removal of hazardous dust, DO NOT sweep, scoop, shovel or in any manner handle other than by vacuuming. DO NOT at any time attempt to substitute or alter the filters in this vacuum. Never operate without filters in place. Use only manufacturer's approved vacuum filters and filter bags. Before attempting to use or before cleaning with this vacuum, be sure that you fully understand the instructions for setting up and cleaning/changing filters. Any health hazards associated with use of this vacuum in conjunction with the removal of hazardous material have not been investigated by Intertek Testing Services NA Inc.

- 3** Lift the powerhead off the collection tank.



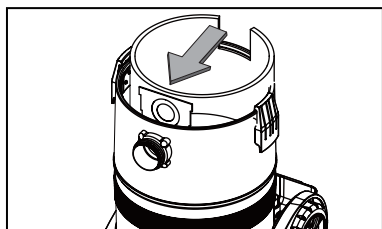
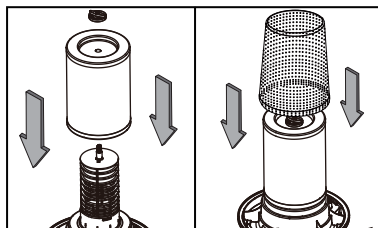
- 4** Remove the contents from inside the collection tank; make sure you have all contents as listed on page 10.

- 5** Turn the collection tank upside down and insert the two castor feet into the front slots on the bottom of the base. Apply downward pressure to each locking castor. Castors will snap into place when installed properly. Verify that the castors are mounted correctly.



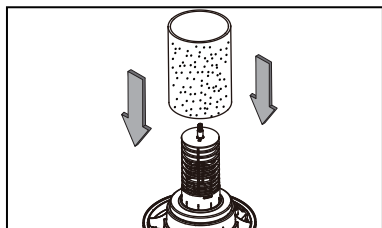
- 6** Insert the wheel axle into the rear wheel housing on the vacuum base. Insert a washer onto the axle followed by a rear wheel and insert another washer. Insert the locking pin into the hole on the end of the axle to lock the wheel. Snap the hub cap onto the wheel. Repeat the same steps at the other end of the axle.

- 7** Your vacuum comes ready for dry vacuum cleaning. If the HEPA cartridge filter and microfibre pre-filter are not installed, refer to page 22 for installation instructions.



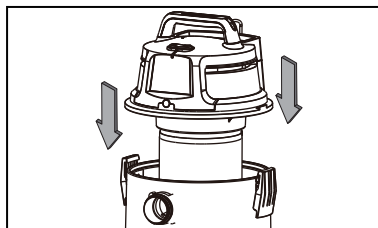
- 8** Optional: For improved dust filtration, fit the dust bag flange onto the inlet port, taking care not to damage the bag.

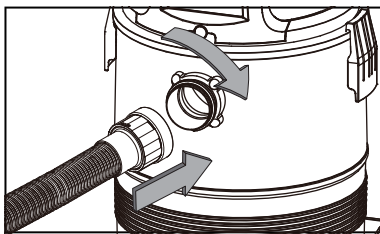
**IMPORTANT:** For vacuuming hazardous dusts, the vacuum cleaner is recommended to be fitted with the dust bag.



- 9** For wet vacuum cleaning, remove the microfibre pre-filter, HEPA cartridge filter and collection bag, and install the supplied foam wet filter. See page 24 for the foam wet filter installation instructions.

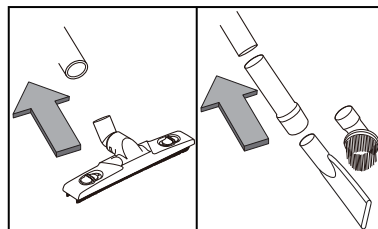
- 10** Place the powerhead back on the collection tank aligning the top section with the latches, and snap into place.





- 11** Insert the locking end of the hose into the vacuum port on the collection tank and turn clockwise to lock into place.

- 12** Choose the desired accessory and insert it onto the end of the hose or extension wand. To use the round dust brush and crevice tool with an extension wand you will be required to use the metal accessory adaptor.



### LIGHTED PLUG

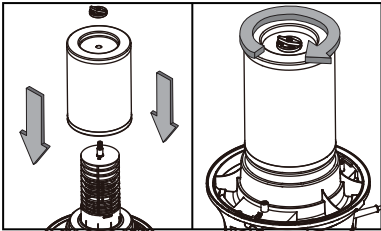
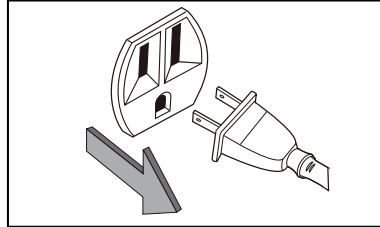
This vacuum comes standard with a lighted plug that when plugged in lights up showing user that wall receptacle is working and that vacuum has power.

### POLARIZED PLUG

To reduce the risk of electric shock, this appliance has a polarized plug (one blade wider than the other). This plug will fit in a polarized outlet only one way. If the plug does not fit fully in the outlet, reverse the plug. If it still does not fit, contact a qualified electrician to install the proper outlet. Do not change the plug in any way. Double insulation ☐ eliminates the need for the three-wire grounded power cord and grounded power supply system.

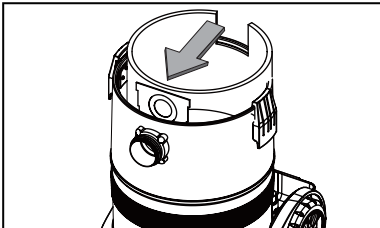
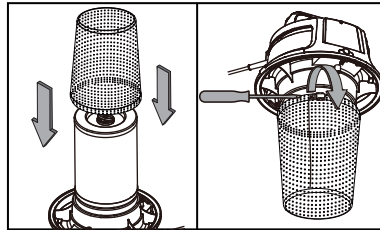
## DRY VACUUM OPERATION

- 1 Verify that the power cord is disconnected from the outlet.



- 2 In order to prepare your vacuum for dry vacuuming, verify that the HEPA cartridge filter is securely mounted. Remove the powerhead and place in an upside-down position. Make sure the HEPA cartridge filter is pushed in firmly against the power head. Install the flat rubber washer and retainer. For installation instructions, see page 22.

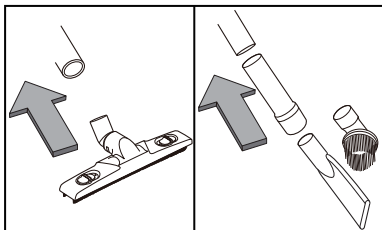
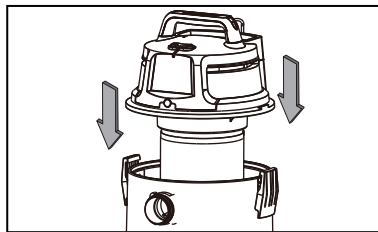
- 3 Slide the microfibre pre-filter onto the assembled HEPA cartridge filter. Tighten the band clamp on the microfibre pre-filter with a screwdriver to ensure proper installation. For installation instructions, see page 22.



- 4 Optional: For improved dust filtration, fit the dust bag flange onto the inlet port, taking care not to damage the bag.

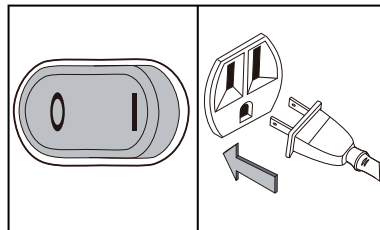
**IMPORTANT:** For vacuuming hazardous dusts, the vacuum cleaner is recommended to be fitted with the dust bag.

- 5** Place the powerhead back on the collection tank and secure it in place using the latches.



- 6** Insert the locking end of the hose into the vacuum port on the collection tank and lock into place. Push the required accessory onto the free end of the hose or extension wand. To use the round dust brush and crevice tool with an extension wand you will be required to use the metal accessory adaptor.

- 7** Verify that the switch is in the 'O' OFF position before plugging the power cord into the power outlet. Plug the power cord into the outlet.



### WARNING:

Be sure to read, understand, and apply information entitled "Safety Guidelines". Do not vacuum in areas with flammable gases, vapours, or explosive dusts in the air. Flammable gases or vapours include but are not limited to: lighter fluid, solvent type cleaners, oil-based paints, gasoline, alcohol, or aerosol sprays. Explosive dusts include but are not limited to: coal, magnesium, grain, or gun powder. To reduce the risk of health hazards from vapours or dust, do not vacuum toxic materials.



### CAUTION:

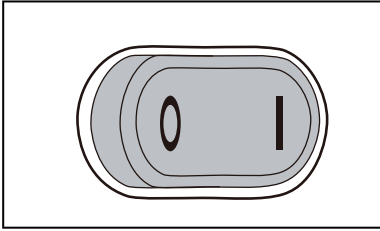
NEVER operate the vacuum cleaner without all of the filters installed. This includes the HEPA cartridge filter and microfibre pre-filter. Motor damage, loss of operating efficiency and recirculation of hazardous material into the work area will take place if not installed.



### WARNING:

Do not plug the power cord into a power outlet. Make sure the plug is disconnected before changing the filters.





- 8** Turn the motor on by flipping the switch to the 'I' ON position and begin vacuuming.

- 9** Once you have completed vacuuming, flip the switch to the 'O' OFF position and unplug the power cord from the outlet.

**O = OFF I = ON**

**DO NOT USE THE HEPA CARTRIDGE FILTER AND THE MICROFIBER PRE-FILTER FOR VACUUMING LIQUIDS.**

**DO NOT USE THE COLLECTION BAG FOR VACUUMING LIQUIDS.**



**WARNING:**

If filters are contaminated or have been used, they must be disposed of properly, prior to performing wet vacuuming operations.

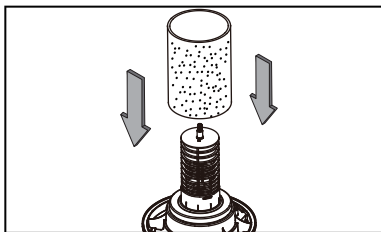
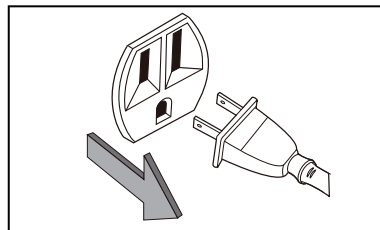


**CAUTION:**

Hazardous materials must be disposed of properly. NEVER throw contaminated debris in your usual trash receptacle. Place debris in an OSHA-approved bag or container marked with HAZARDOUS MATERIAL warning and dispose of in accordance with your local hazardous waste regulations.

**WET VACUUM OPERATION**

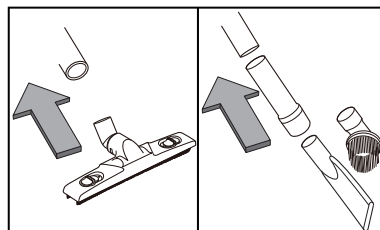
- 1 Verify that the power cord is disconnected from the outlet. Make sure that the collection tank is clean and free of dust and dirt.



- 2 Remove all dry-use filters. Carefully install the foam wet filter over the filter cage and place power head back on the collection tank. For foam wet filter installation instructions, see page 24.

**DO NOT USE THE HEPA CARTRIDGE FILTER AND THE MICROFIBRE PRE-FILTER FOR VACUUMING LIQUIDS.**

- 3 Push the required accessory onto the free end of the hose or extension wand. To use the round dust brush and crevice tool with an extension wand you will be required to use the metal accessory adaptor.

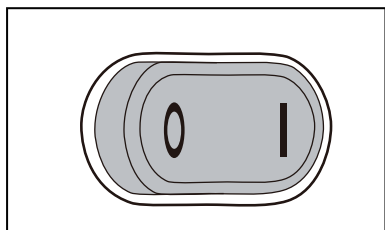
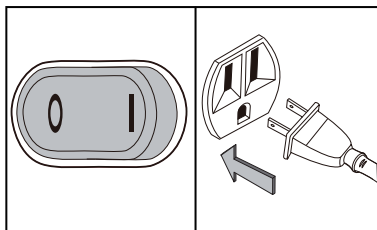
**WARNING:**

Be sure to read, understand, and apply information entitled "Safety Guidelines". Do not vacuum in areas with flammable gases, vapours, or explosive dusts in the air. Flammable gases or vapours include but are not limited to: lighter fluid, solvent type cleaners, oil-based paints, gasoline, alcohol, or aerosol sprays. Explosive dusts include but are not limited to: coal, magnesium, grain, or gun powder. To reduce the risk of health hazards from vapours or dust, do not vacuum toxic materials.

**WARNING:**

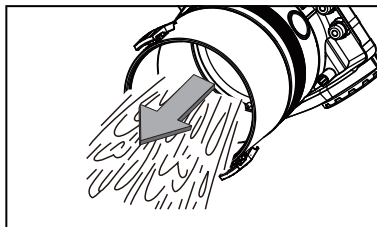
Do not plug the power cord into a power outlet. Make sure the plug is disconnected before changing the filters.

- 4** Verify that the switch is in the 'O' OFF position before plugging the power cord into the power outlet. Plug the power cord into the outlet.



- 5** Turn the motor on by flipping the switch to the 'I' ON position.

- 6** Once you have completed vacuuming, flip the switch to the 'O' OFF position and unplug the power cord from the outlet. After use, drain liquids into a suitable receptacle or drain. Rinse, clean, and dry the inside and outside of the collection tank.

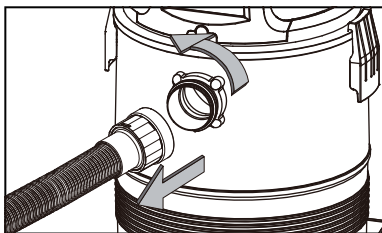
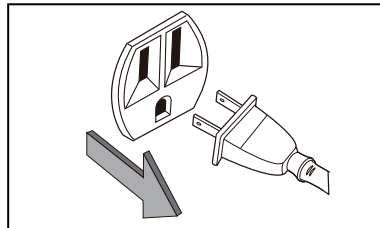


**IMPORTANT:** When vacuuming large quantities of liquids, do not immerse the nozzle completely in the liquid; leave a gap at the tip of the nozzle opening to allow air inflow. The machine is fitted with a float valve that stops the suction action when the collection tank reaches its maximum capacity. You will notice an increase in motor speed. When this happens, turn off the machine, disconnect from power supply, and drain the liquid into a suitable receptacle or drain. To continue vacuuming, refit the powerhead to the collection tank. After wet vacuuming, turn the machine off and remove plug from the power supply. Empty the collection tank, clean and dry the inside and outside before storage.

**REMEMBER!** The foam wet filter must be removed after wet vacuuming and the HEPA cartridge filter must be installed before dry vacuuming again.

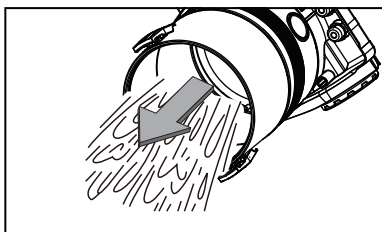
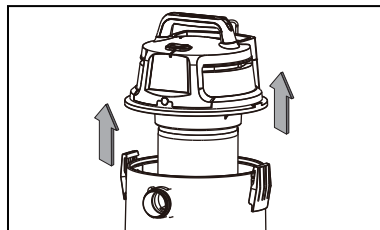
**EMPTYING THE COLLECTION TANK**

- 1** Verify that the power cord is disconnected from the outlet.



- 2** Disconnect the hose from the vacuum.

- 3** Undo the latches and remove the powerhead from the collection tank. Place powerhead on a soft, clean surface upside down.



- 4** Clear all dirt or debris from the collection tank and hose into a proper waste container.

**WARNING:**

Always disconnect the plug from a power outlet before removing the power head from collection tank.

**5** Clean or replace the filters.

**6** Check the hose, accessories, and power cord to ensure that they have not been damaged.

**7** Place the powerhead back onto the collection tank and secure latches.

## STORAGE

Before storing your vacuum, the collection tank should be emptied and cleaned. The accessories should be cleaned and stored so they can be readily available when needed. Store the wet/dry vacuum indoors.

## REPAIRS

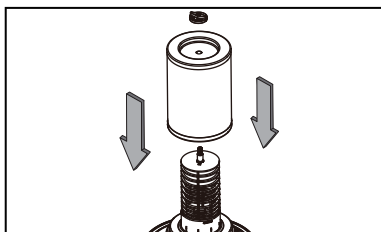
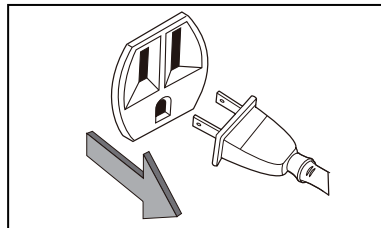
Repairs for this wet/dry vacuum should be performed only by qualified service personnel using only identical replacement parts.

**IMPORTANT:** Clean or change the filter regularly for the best performance. ALWAYS USE THE HEPA CARTRIDGE FILTER AND THE MICROFIBRE PRE-FILTER FOR DRY VACUUMING. If the machine is used without the HEPA cartridge filter, the motor will burn out and the warranty will be void. Always keep spare dust filters on hand.

**NOTICE!** The filters included are made of high-quality materials designed to stop small dust particles. The HEPA cartridge filter should be used for dry pick-up only. A dry HEPA cartridge filter is necessary to pick up dust. If the HEPA cartridge filter is wet, it will clog quickly and be very difficult to clean. Handle the filter carefully when removing it for cleaning and replacing it. Check the filters for tears or small holes. A small hole can let dust pass through and out of the filter. Do not use a filter with holes or tears; replace it immediately.

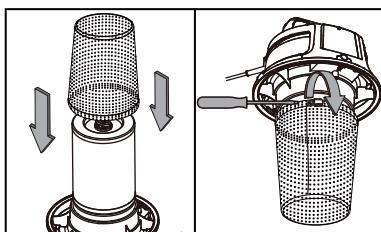
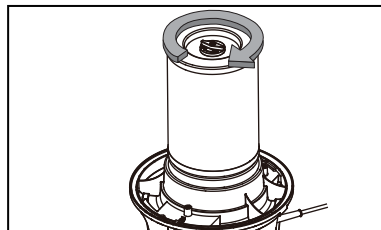
**INSTALLING HEPA CARTRIDGE FILTER AND MICROFIBRE PRE-FILTER**

- 1** Verify that the power cord is disconnected from the outlet.



- 2** Remove the powerhead and place in an upside-down position. Install the HEPA cartridge filter over the filter cage with the flat end of the filter towards the powerhead. Carefully push filter in until it stops against the powerhead.

- 3** Place the filter retainer on top of the HEPA cartridge filter over the raised lip and tighten down by turning the retainer clockwise. Do not over-tighten.

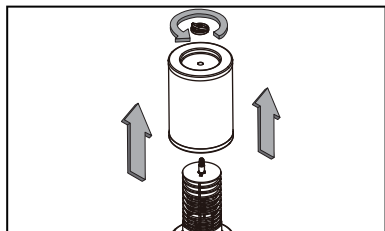
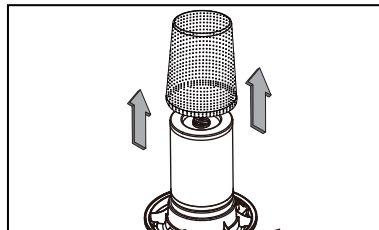


- 4** Slide the microfibre pre-filter onto the assembled HEPA cartridge filter and over the lower end cap. Tighten the band clamp on the microfibre pre-filter with a screwdriver to ensure proper installation.

- 5** Place the powerhead back onto the collection tank.

## REMOVING AND CLEANING HEPA CARTRIDGE FILTER AND MICROFIBRE PRE-FILTER

- 1 Loosen the band clamp on the pre-filter with a screwdriver and remove the microfibre pre-filter from the HEPA cartridge filter.



- 2 With the removed powerhead in an upside-down position, unlock and remove the filter retainer by turning the retainer counter-clockwise, and carefully remove the HEPA cartridge filter from the filter cage.

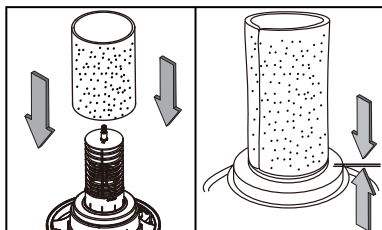
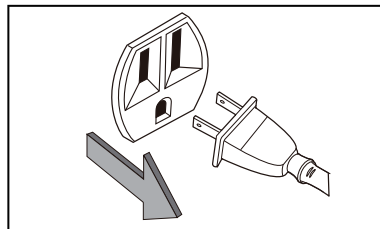
- 3 Clean the HEPA cartridge filter and microfibre pre-filter by gently tapping or brushing dirt off. Cleaning should not be done indoors in living areas. For optimal performance, new filters are recommended.

- 4 Install cleaned or new filters as above in steps 2-4 of Installing HEPA Cartridge Filter and Microfibre Pre-filter.

**IMPORTANT:** After vacuuming hazardous dusts, it is recommended to change the HEPA cartridge filter and microfibre pre-filter to new ones.

**INSTALLING FOAM WET FILTER**

- 1 Verify that the power cord is disconnected from the outlet.

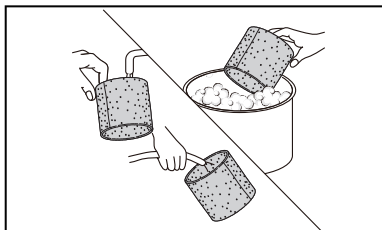
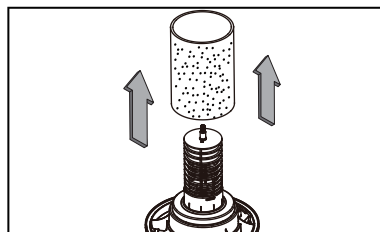


- 2 Remove the powerhead and place in an upside-down position. Follow instructions to remove the HEPA cartridge filter and microfibre filter on page 23. Carefully slide the foam wet filter down over the filter cage making sure the cage is completely covered.

- 3 Place the powerhead onto the collection tank.

**REMOVING AND CLEANING FOAM WET FILTER**

- 1 With the removed powerhead in an upside-down position, carefully remove the foam wet filter.



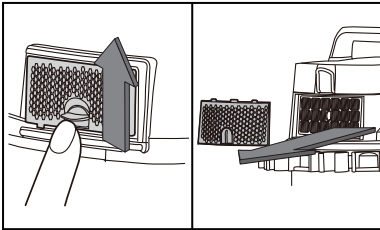
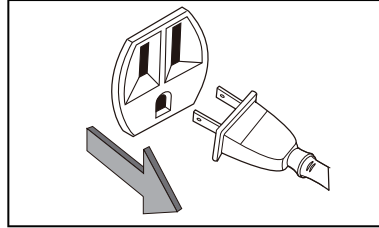
- 2 Use a mild soap and water solution to wash the foam wet filter and rinse with clean water.

- 3 Allow the wet filter to air dry completely before storing or installing onto the filter cage.



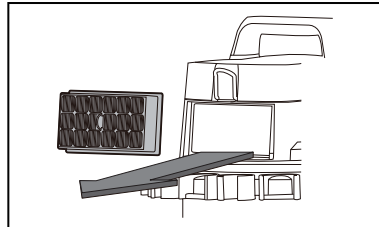
## CLEANING HEPA MATERIAL EXHAUST FILTER

- 1 Verify that the power cord is disconnected from the outlet.

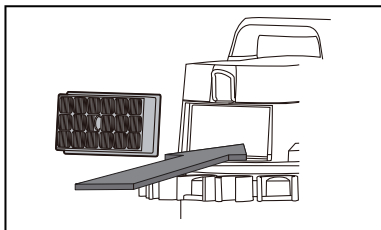


- 2 Unlock the HEPA material exhaust filter door by lifting the locking tab upwards to the release. Pull the door out.

- 3 Remove the material exhaust filter from the vacuum.

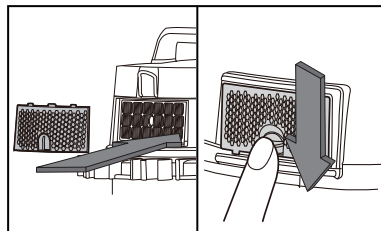


- 4 Clean the HEPA material exhaust filter by gently tapping or brushing off dirt. For optimal performance it is recommended to replace the old filter with a new filter regularly.



- 5** Install the cleaned or new filter into place.

- 6** Insert the filter door tabs into the upper slots and lock the filter door into place.



**CHANGE THE COLLECTION BAG**

The collection bag **MUST** be replaced when you have collected hazardous material **OR** when the collection bag is 3/4 full. Excessive over-filling of this bag makes it difficult to remove from the vacuum tank and can result in breakage and spills. The collection bag comes equipped with a quick-closing flap. When collection bag becomes 3/4 full, turn off vacuum and slowly remove the collection bag from the tank until the opening in the collection bag is clear of the tank. Pull the closure slide up on the collection bag, which will close the opening. Hazardous materials must be disposed of properly. **NEVER** throw contaminated debris in your usual trash receptacle. Place closed collection bag in an OSHA-approved bag or container marked with a **HAZARDOUS MATERIAL** warning and dispose of in accordance with your local hazardous waste regulations.

**CHANGE THE HEPA CARTRIDGE FILTER**

Replace the HEPA cartridge filter when you have vacuumed hazardous material **OR** loss of suction power continues to occur after you have checked for obstructions in the hose or attachments.

**CHANGE THE MICROFIBRE PRE-FILTER**

Replace the microfibre pre-filter after you have vacuumed hazardous material, loss of suction power continues after cleaning the pre-filter and replacing the HEPA cartridge filter, or if there is visible damage or tears to the pre-filter.

Problem	Possible Causes	Solution
The wet/dry vacuum will not operate.	No power supply.	Check the power supply, cord, breakers, and fuses.
	Faulty power cord.	Unplug and check the power cord. If damaged, have it repaired by a professional.
	Collection tank is full.	Empty the collection tank.
	Switch in the wrong position.	Press the ON 'I' button on the power head.
The dust comes out from the motor cover.	The HEPA cartridge filter is missing or damaged.	Attach or replace the HEPA cartridge filter.
Reduced efficiency and motor/speed vibration.	There are blockages in the nozzle, hose, or the collection tank inlets.	Unplug and check nozzle, hose and collection tank inlets for blockages.
	The HEPA cartridge filter is clogged.	Take off the filter and clean it or install a new HEPA cartridge filter.
	The HEPA cartridge filter or microfibre pre-filter has been contaminated heavily.	Remove and clean or replace with a new filter.

**WARNING:**

To reduce the risk of electric shock, unplug before troubleshooting.

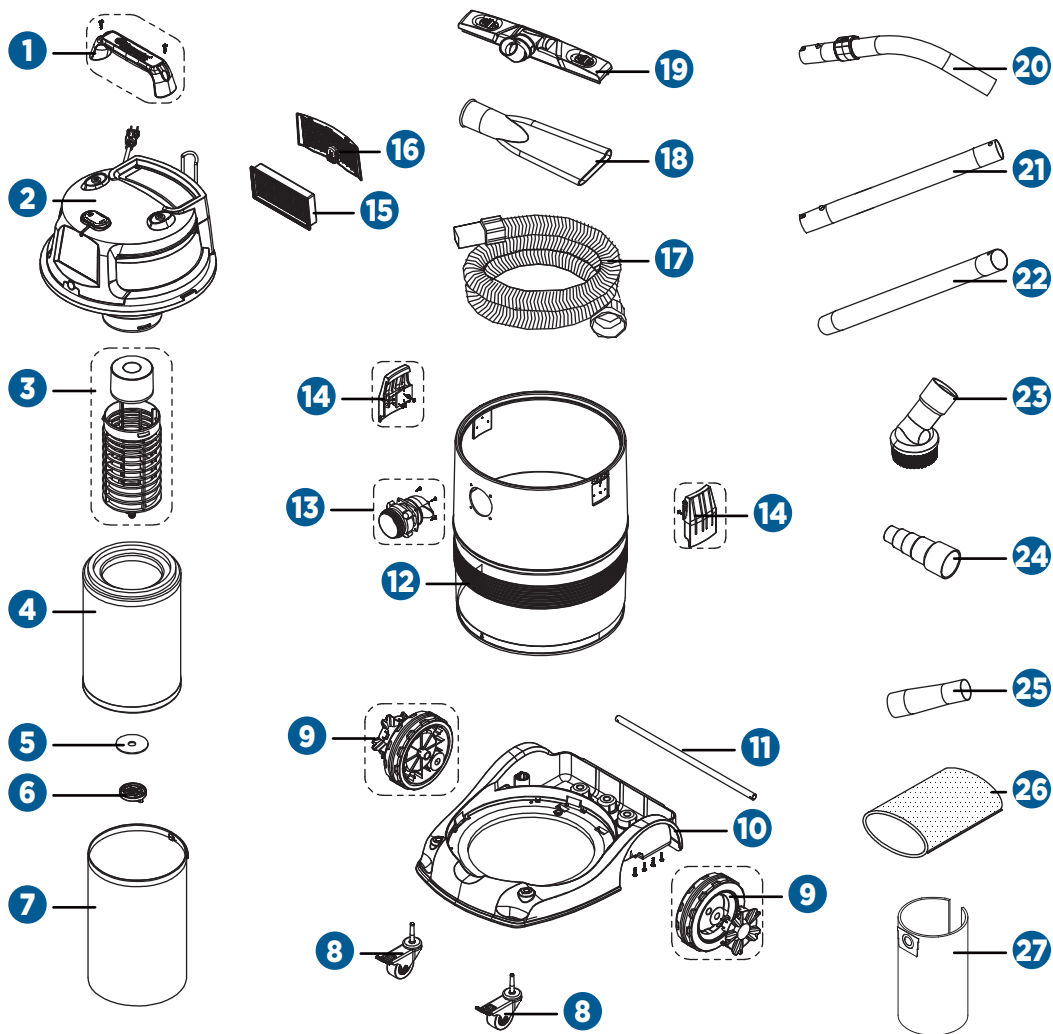
**Additional accessories for your Maximum® HEPA Certified Wet/Dry Vacuum are available.**

### Consumables

054-0352-4	HEPA Cartridge Filter
054-0353-2	Microfibre Pre-filter
054-0354-0	High-Efficiency Collection Bag
054-0355-8	HEPA Material Exhaust Filter

### 1 7/8" (4.8 cm) Accessories

054-0270-8	Utility Nozzle
054-0271-6	Floor Squeegee Nozzle
054-0273-2	Dust Brush
054-0274-0	Crevice Tool
054-0275-8	Extension Wand



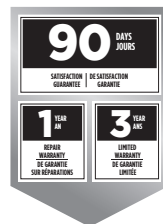
No.	Description
1	Handle Assembly
2	Powerhead Assembly
3	Float Filter Cage
4	HEPA Cartridge Filter
5	HEPA Lid Seal Ring
6	HEPA Nut
7	Microfibre Pre-Filter
8	Castor Assembly
9	Wheel Assembly
10	Base Assembly
11	Wheel Axle
12	Collection Tank
13	Vacuum Port Assembly
14	Latch Assembly
15	HEPA Material Exhaust Filter
16	Exhaust Filter Door
17	Hose
18	Crevice Tool
19	Professional Floor Nozzle
20	Steel Elbow with Air Control
21	Locking Steel Extension Wand #1
22	Locking Steel Extension Wand #2
23	Round Dust Brush
24	Power Tool Adaptor
25	Metal Accessory Adaptor
26	Foam Wet Filter
27	High-Efficiency Collection Bag

If any parts are missing or damaged, or if you have any questions, please call the toll-free helpline at 1-888-670-6682.

### 3-Year Limited Warranty

This MAXIMUM product is guaranteed for a period of three (3) years from the date of original retail purchase against defects in workmanship and materials.

Subject to the conditions and limitations described below, this product, if returned to us with proof of purchase within the stated warranty period and if covered under this warranty, will be repaired or replaced (with the same model, or one of equal value or specification), at the sole discretion of the MAXIMUM Canada authorised repair centre ("Service Provider"). We will bear the cost of any repair or replacement and any costs of labour relating thereto.



**These warranties are subject to the following conditions and limitations:\***

- a) A bill of sale verifying the purchase and purchase date must be provided;
- b) Defects in workmanship and material to be assessed and determined by the Service Provider;
- c) This warranty will not apply to any product or part thereof which is worn or broken or which has become inoperative due to abuse, misuse, accidental damage, neglect or lack of proper installation, operation or maintenance (as outlined in the applicable owner's manual or operating instructions);
- d) This warranty does not apply to normal wear and tear or to expendable parts or accessories (including hose attachments and filters) that may be supplied with the product that by their nature have a limited life span and are expected to become inoperative or unusable after a reasonable period of use;
- e) This warranty will not apply to routine maintenance and consumable items such as, but not limited to, fuel, lubricants, vacuum bags, blades, belts, sandpaper, bits, fluids, rubber O-rings, tune-ups or adjustments;
- f) This warranty excludes the following components that may accompany your product:
  - (1) The carrying case, which is only for a period of one (1) year from the date of original retail purchase against defects in workmanship and materials.
  - (2) Accessories, including hose attachments and filters, which do not carry a warranty of any kind.
- g) This warranty will not apply where damage is caused by repairs made or attempted by others (i.e., persons not authorized by the manufacturer), and any such unauthorized repairs or attempted repairs shall void this warranty in its entirety;
- h) This warranty will not apply to any parts other than original parts, except to the extent that the retailer or manufacturer or persons authorized by either of them have repaired or replaced them;
- i) This warranty will not apply to any product that was sold to the original purchaser as a reconditioned or refurbished product (unless otherwise specified in writing);



- j) This warranty will not apply to any product or part thereof if any part from another manufacturer is installed therein or any repairs or alterations have been made or attempted by unauthorized persons;
- k) This warranty will not apply to normal deterioration of the exterior finish, such as, but not limited to, scratches, dents, paint chips, or to any corrosion or discolouring by heat, abrasive and chemical cleaners;
- l) This warranty will not apply to component parts sold by and identified as the product of another company, which shall be covered under that product manufacturer's warranty, if any;
- m) Any products replaced by the retailer in attempt to fulfill warranty obligations is subject to the original product warranty conditions and related time period as initiated by the original date of purchase; if product is purchased in Quebec, the warranty term will be extended for a period equal to the time during which the Quebec retailer possesses the product in an attempt to fulfill warranty obligations; replaced product will not default to new product warranty conditions; and
- n) The retailer and manufacturer's sole obligation and the purchaser's sole remedy under this warranty shall be as set out herein. The warranties contained herein are not transferable and are given only to the purchaser. FURTHER, THE WARRANTIES SET OUT HEREIN ARE IN LIEU OF ALL OTHER WARRANTIES OR CONDITIONS, WHETHER EXPRESS, IMPLIED OR STATUTORY (INCLUDING SUCH AS ARISE UNDER THE SALE OF GOODS ACT OR THE INTERNATIONAL SALE OF GOODS ACT), ARISING OUT OF A COURSE OF DEALING OR USAGE OF TRADE OR OTHERWISE, INCLUDING, SUBJECT TO APPLICABLE LAW, ANY IMPLIED WARRANTIES OR CONDITIONS OF MERCHANTABILITY, MERCHANTABLE QUALITY, FITNESS OR ADEQUACY FOR A PARTICULAR PURPOSE OR USE, AND ALL OTHER SUCH WARRANTIES ARE EXPRESSLY DISCLAIMED BY THE RETAILER AND MANUFACTURER.

## Additional Limitations

This warranty applies only to the original purchaser and may not be transferred.

This warranty applies for a period of three (3) years from the date of original retail purchase, as indicated on the bill of sale.

Neither the retailer, MAXIMUM Canada, nor the manufacturer shall be liable for any other expense, loss or damage, including, without limitation, any indirect, incidental, consequential or exemplary damages arising in connection with the sale, use or inability to use this product.

Under no circumstances shall the retailer, MAXIMUM Canada, or manufacturer be liable to the purchaser for any claim for (a) indirect, special, punitive, incidental, exemplary, or consequential damages; (b) compensation for loss of profits, anticipated revenue, savings or goodwill, or other economic loss of the purchaser; (c) exemplary, aggravated or punitive damages howsoever incurred; (d) contribution or set-off in respect of any claims against the purchaser; (e) any damages whatsoever relating to

third party products or services or the purchaser's materials; or (f) any damages whatsoever relating to interruption, delays, errors or omissions; in each case under any theory of law or equity, arising out of or in any way related to this warranty, even if advised of the possibility thereof. Notwithstanding any provision herein or entitlement of the purchaser at law, in equity or otherwise, in no event shall the liability of the retailer or manufacturer under this warranty, whether in contract, tort, product liability or otherwise, exceed, in the aggregate, the amount paid by the purchaser to the retailer for the product to which this warranty applies.

### **\*Notice to consumer**

This warranty gives you specific legal rights, and you may have other rights, which may vary from province to province. The provisions contained in this warranty are not intended to limit, modify, take away from, disclaim or exclude any statutory warranties set forth in any applicable provincial or federal legislation.

In addition to the 3-Year Limited Warranty, this MAXIMUM product is covered by our:

### **1-Year Repair Warranty**

MAXIMUM Canada will maintain this product and replace critical parts which have worn beyond reasonable use through normal use of such product, any time during the first year after purchase.

The following are excluded from this 1-Year Repair Warranty:

- a) Missing or damaged parts or components that are a result of abuse or misuse;
- b) Any wear and tear to non-critical parts or accessories that do not affect the core function of the product.

### **90-Day Satisfaction Guarantee**

If you are not completely satisfied with the performance of your MAXIMUM product for any reason, you can return it within 90 days from the date of purchase with proof of purchase for exchange or a full refund.

Made in China

Imported by  
MAXIMUM Canada Toronto, Canada M4S 2B8