

7' PRE-LIT WESLEY SPRUCE CHRISTMAS TREE

model no. 051-5649-6 | Toll-free number 1-866-827-4985

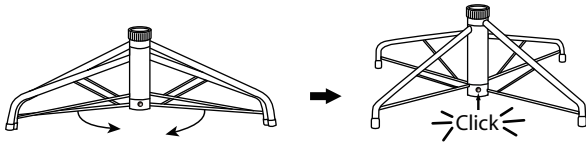
IMPORTANT: Please read this manual carefully before assembly and save it for reference.

TREE ASSEMBLY INSTRUCTIONS

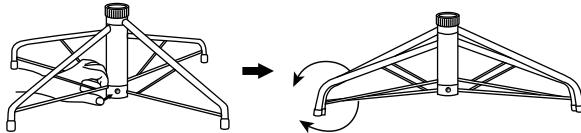
Carefully follow the instructions below to quickly and easily set up your tree.

1. Before you start to assemble your tree, choose an appropriate location near a wall outlet. Do not plug the adaptor into the wall outlet until all of the below steps are completed.
2. First assemble the tree stand and place on a level surface. (See Fig. A.)

Fig. A - Tree Stand Assembly



Swivel the legs of the stand until they snap into position. (The legs should be evenly spaced once this step is complete). Place the tree stand on a level surface.



To close the stand, press the metal button and fold the legs together.

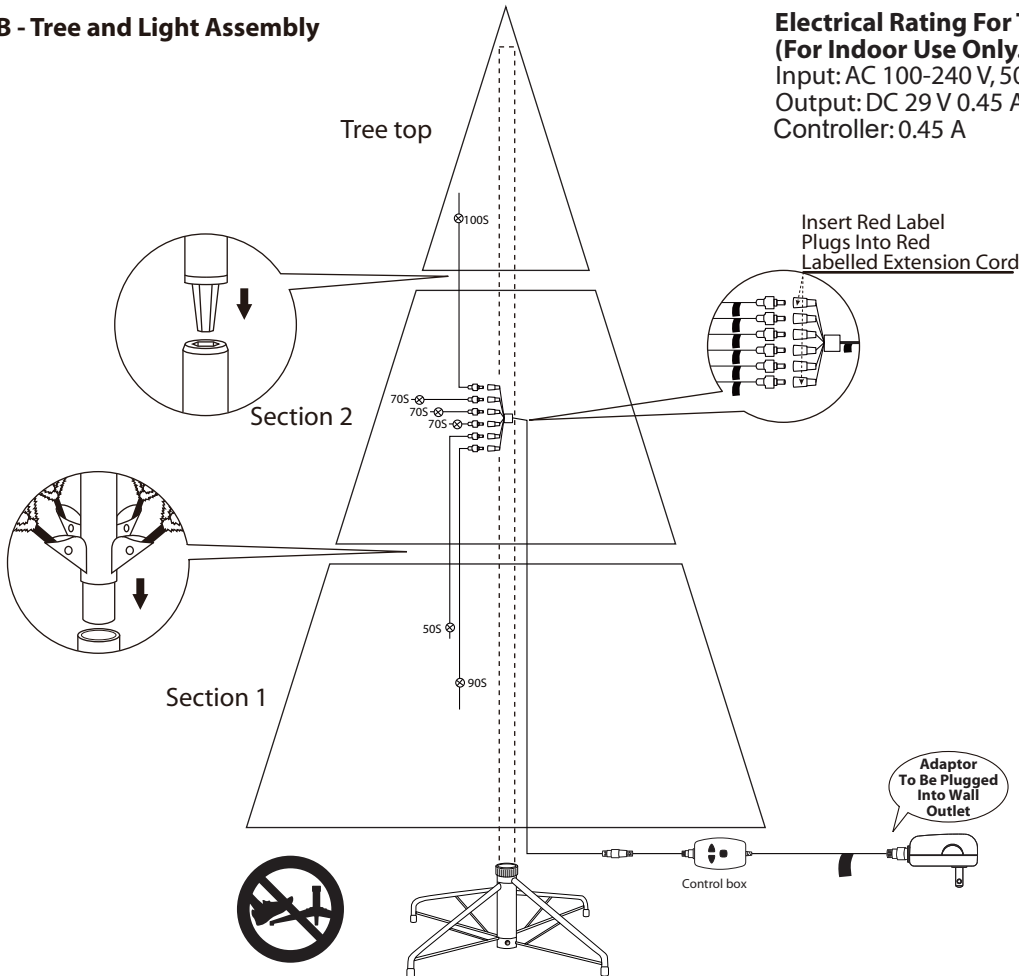
Fig. B - Tree and Light Assembly

Electrical Rating For The Tree (For Indoor Use Only.)

Input: AC 100-240 V, 50/60 Hz, 0.35 A

Output: DC 29 V 0.45 A

Controller: 0.45 A



3. Each tree section is numbered with a sticker. Please identify all sections before assembling.
4. Assemble the tree from the bottom to the top. Start with the bottom section. Remove the protective cap before inserting it into the already pre-assembled stand. Before proceeding to the next step, make sure the pole is firmly inserted and secured into the stand.
Note: Do not step on the tree stand legs during the setup. This may deform the tree stand and may result in an unbalanced tree.
5. Continue by inserting the upper tree section(s) into the lower section(s) until inserting the tree top.

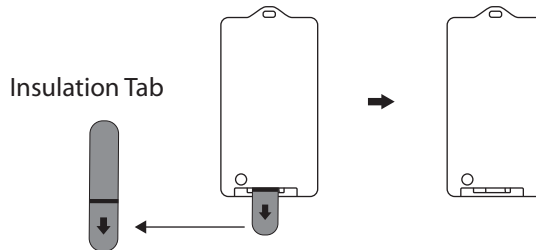
6. Allow branches to fall into place or gently pull up and out. When adjusting branches, be sure that all wires are free of branch hinges.
7. (For pre-lit trees only.) Connect the plug(s) securely to the cord(s) as per the colour labels indicated in **Fig. B**. Insert the green-labelled cord plug into the wall outlet. Your entire tree should now be lit.
8. Begin to shape the branches and tips, working from the bottom to the top. Start with tips farthest from the pole and fan out one to the right, one to the left and one at the centre of the main stem. **(See Fig. C.)**



9. After shaping the entire tree following the previous step, slightly upsweep all branch tips for a uniform look. Shift branches to fill any gaps. Your pre-lit tree is now complete and ready to be decorated.

REMOTE CONTROL INSTRUCTIONS

Remove the insulation tab in the remote control.

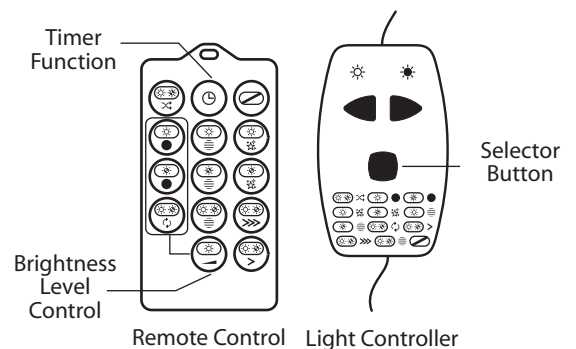


HOW TO USE THE REMOTE CONTROL AND LIGHT CONTROLLER:

On the remote control, simply press the button to choose the light effect you want.

On the light controller, press the selector button to browse among:

- | | |
|---------------------------------|----------------------------------|
| 1. COMBINATION | 2. CLEAR STEADY |
| 3. COLOUR STEADY | 4. CLEAR TWINKLING |
| 5. COLOUR TWINKLING | 6. CLEAR FADING |
| 7. COLOUR FADING | 8. CLEAR & COLOUR ALTERNATING |
| 9. CLEAR & COLOUR FAST BLINKING | 10. CLEAR & COLOUR SLOW BLINKING |
| 11. CLEAR & COLOUR FADING | 12. OFF |



There are 5 brightness levels under Clear Steady, Colour Steady and Clear/Colour Alternating modes.

Press button on the remote to increase and decrease the brightness of lights.

Press button on the light controller to increase the brightness.

Press button on the light controller to decrease the brightness.

Demo Mode:

NOTE: This tree offers a Demo Mode. In this mode the light effects are displayed one by one in sequence until another light function is selected. This temporary light effect will last for 15 seconds before returning to Demo Mode.

To Activate DEMO Mode:

1. Using the light controller: press and hold the selector button for 10 seconds.
2. The **clear lights will blink 3 times**, indicating that **DEMO mode is ON**.
3. The tree is now in demo mode.

To Deactivate DEMO Mode:

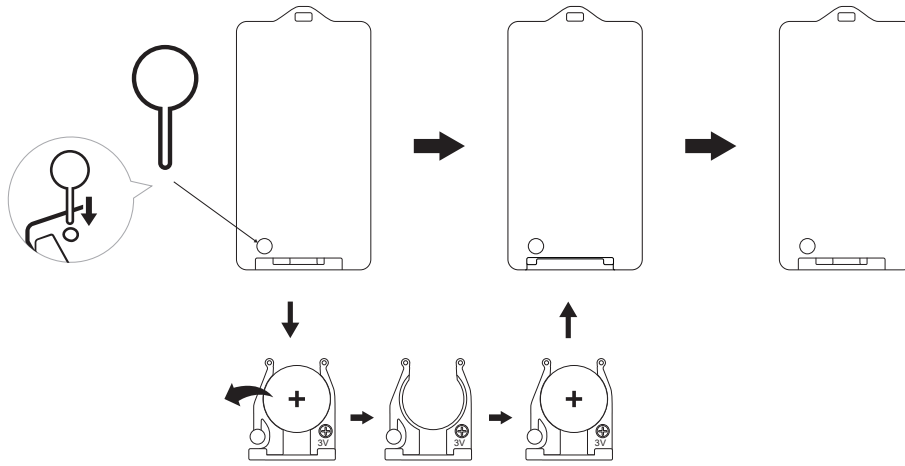
1. Using the light controller: press and hold the selector button for 10 seconds.
2. The **multicolour lights will blink 5 times**, indicating that **DEMO mode is OFF**.
3. The tree is now in normal mode.

Timer Function:

1. To turn on the timer function, press the "timer" button on the remote control once. The tree lights will flash 2 times, indicating the timer function is activated. The lights will stay ON for 6 hours and then OFF for 18 hours as a cycle until the timer function is turned off.
2. To turn off the timer function, press the "timer" button again. The tree lights will flash 4 times, indicating the timer function is deactivated.

BATTERY REPLACEMENT

1. Locate the push button near the battery tray at the rear.
2. Using a pin or similar object with a fine tip, press and hold down on the button while pulling on the battery tray to disconnect the tray from the remote control.
3. Remove the pin and continue to pull the battery tray out completely.
4. Replace the old battery with a new one (battery type: CR2032). Be sure the new battery is installed with the correct polarity (+ and -).
5. Push the battery tray back into the remote control.



⚠ WARNING

1. This product is powered by a lithium battery. Due to their small size, lithium batteries can easily be swallowed by children. Ingestion of such batteries has been known to cause death.
2. This product contains a lithium battery which if swallowed has been known to cause death.
3. Do not expose light set to moisture.
4. Remove batteries when not used for an extended period of time, or when depleted.
5. Dispose of used batteries properly by following directions on batteries.
6. Use only CR2032 batteries for the remote control.
7. Clean the battery contacts prior to battery installation.
8. DO NOT DISPOSE OF BATTERIES IN FIRE. BATTERIES MAY EXPLODE OR LEAK.
9. Keep batteries away from children. If swallowed, consult a physician at once. Ingestion may lead to serious injury or death.
10. Non-rechargeable batteries are not to be recharged.

STORAGE INSTRUCTIONS

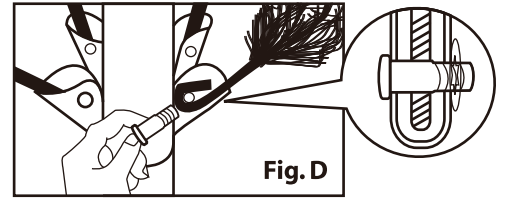
1. For pre-lit trees, first unplug cord from the wall outlet, and remove all ornaments and decorations. Disconnect light cords between each section of the tree.
2. Disassemble the tree from the top to the bottom. Start with the tree top: gently lift straight up to remove from section below, and fold all branches toward the pole.
3. In case of difficulty separating the tree pole (trunk), apply a small amount of lubricant at the joint and gently twist the upper pole in both directions. Lift up the upper pole again.
4. Continue by gently lifting straight up each section from the section below and folding all branches toward the pole until the bottom section is removed from the tree stand.
5. Carefully place all tree sections into shipping box and tape it shut.
6. When not in use, please store your tree in a cool, dry place away from sunlight. Exposing your tree to excessive heat or humidity may damage your tree.
7. Dispose of used batteries per municipal or provincial law.
8. Battery must be recycled or disposed of properly. Dispose of as per the requirements of your local municipality.
9. Keep out of reach of pets and children.

For pre-lit trees, if the tree does not illuminate:

1. Please check to make sure that all plugs are properly connected according to the colour labels indicated in **Fig. B** and that the power cord is plugged into the wall outlet. Refer to assembly guide for instructions.
2. When multiple products are connected together, do not exceed the lowest of the indicated maximum wattage on the cord tag near the connected product's receptacle.

Loose Hinge Pin

1. Extra hinge pins are included for repairing the hinges.
Place the branch into the slot of the bracket.
2. Insert a new hinge pin through the hole and secure using the retainer washer. **(See Fig. D.)**

**SPARE PARTS**

Included with each tree is hinge pins/washers.
If extra parts are needed, please contact our customer service centre.

CAUTION:

1. To reduce the risk of fire and electric shock:
 - a) Do not install on trees having needles, leaves or branch covering of metal or materials which look like metal, and
 - b) Do not mount or support strings in a manner that can cut or damage wire insulation.
2. Use only the adaptor supplied with this product. Using a different adaptor will damage the lights and may cause fire, or electric shock hazards.
3. The controller and remote control (if included) can only be used with this product.

This product carries a five (5) year warranty against defects in workmanship and materials. NOMA Canada agrees to replace a defective product within the stated warranty period. The defective product will need to be returned to the place of purchase along with proof of purchase. This product is not guaranteed against wear or breakage due to misuse and/or abuse.

⚠ WARNING

INGESTION HAZARD:
This product contains a
button cell or coin battery.

⚠ AVERTISSEMENT

RISQUE D'INGESTION :
Cet article contient une pile
bouton ou une pile plate.