

## 7' INDOOR RHODES ALPINE UPSWEPT TREE

PRODUCT NO. 051-5645-4

### OPERATING INSTRUCTIONS



**TOLL FREE: 1-888-670-6684**

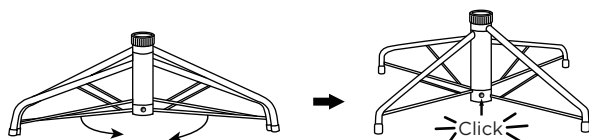
IMPORTANT: Please read this manual carefully before beginning assembly of this product. Keep this manual for future reference.

### TREE ASSEMBLY INSTRUCTIONS

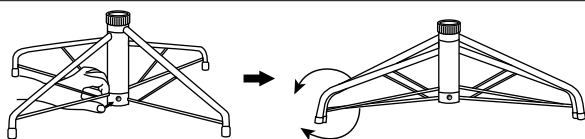
Set up and light up your tree in less than 10 minutes.  
Carefully follow the instructions below on how to quickly and easily set up your new tree.

1. Before you start to assemble your tree, choose an appropriate location near a wall outlet.
2. First assemble the tree stand and place on a level surface. **(See Fig. A.)**

**Fig. A — Tree Stand Assembly**

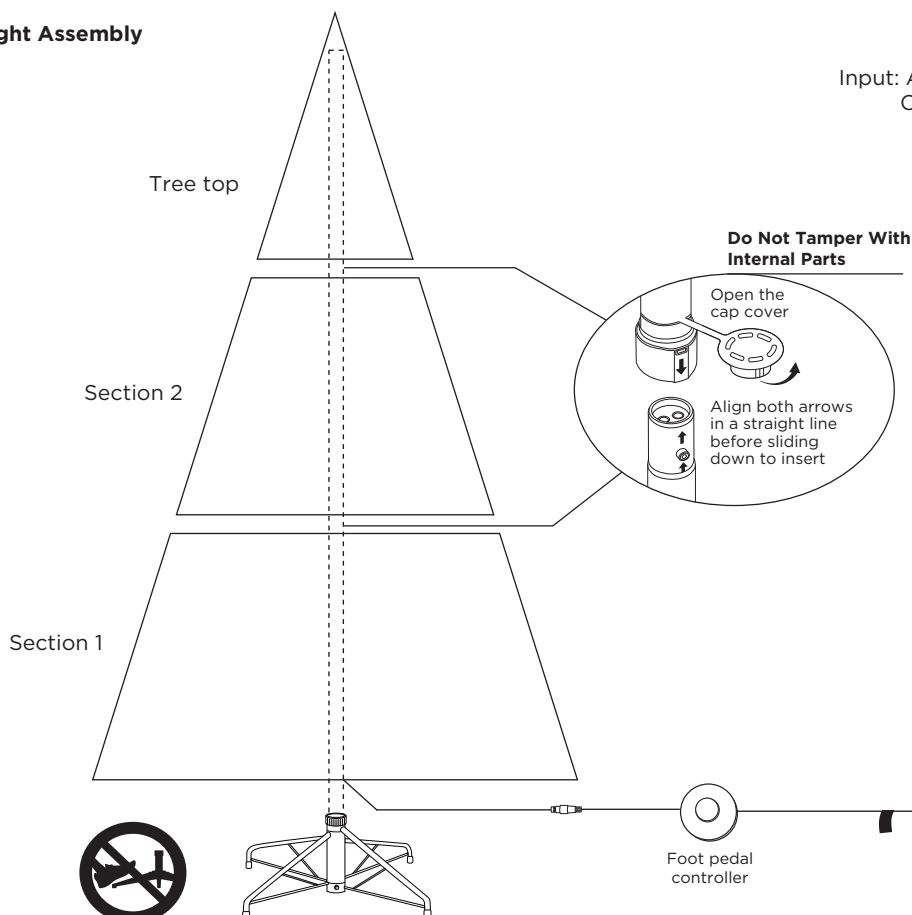


Swivel the legs of the stand until they snap into position. (The legs should be evenly spaced once this step is complete.) Place the tree stand on a level surface.



To close the stand, press the metal button and fold the legs together.

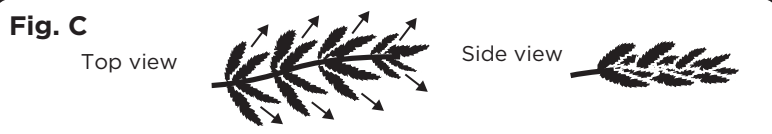
**Fig. B — Tree and Light Assembly**



**Tree Electrical Rating  
(For Indoor Use Only.)**

Input: AC 120 V, 60 Hz, 0.38 A  
Output: DC 29 V 0.621 A  
Controller: 0.621 A

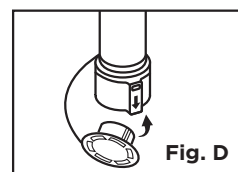
- Each tree section is numbered with a sticker. Please identify all sections before assembling.
- Assemble the tree from the bottom to the top. Start with the bottom section. Remove the protective cap before inserting it into the already pre-assembled stand. Before proceeding to the next step, make sure the pole is firmly inserted and secured into the stand.  
**Note:** Do not step on the tree stand legs during the setup. This may deform the tree stand and may result in an unbalanced tree.
- Continue by inserting the upper tree section(s) into the lower section(s) until inserting the tree top.
- Allow branches to fall into place or gently pull up and out. When adjusting branches, be sure that all wires are free of branch hinges.
- Insert green-labelled plug into the wall outlet. **(See Fig. B.)** Your entire tree should now be lit.
- Begin to shape the branches and tips, working from the bottom to the top. Start with tips farthest from the pole and fan out one to the right, one to the left and one at the centre of the main stem. **(See Fig. C.)**



- After shaping the entire tree following the previous step, slightly upsweep all branch tips for a uniform look. Shift branches to fill any gaps. Your pre-lit tree is now complete and ready to be decorated.

## STORAGE INSTRUCTIONS

- Unplug cord from the wall outlet first and then remove all ornaments and decorations.
- Disassemble the tree from the top to the bottom. Start with the tree top: gently lift straight up to remove from section below and fold all branches toward the pole.
- In case of difficulty separating the tree pole (trunk), apply a small amount of lubricant at the joint and rotate the upper pole in both directions. Lift up the upper pole again.
- Continue by gently lifting straight up each section(s) from the section below, and fold all branches toward the pole until the bottom section is removed from the tree stand. Put the protective cap on the poles to avoid damaging the internal parts. **(See Fig. D.)**
- Carefully place all tree sections into shipping box and tape it shut.
- When not in use, please store your tree in a cool, dry place away from sunlight. Exposing your tree to excessive heat or humidity may damage your tree.
- Keep out of reach of pets and children.



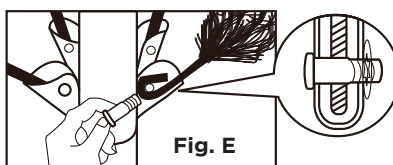
## TROUBLESHOOTING

### If the tree does not illuminate:

- Please check to make sure that all plugs are properly connected and that the power cord is plugged into the wall outlet. Refer to assembly guide for instructions. Try stepping on the ON/OFF button of the foot pedal.
- Turn the poles gently to make sure pole-to-pole connections are secure.
- When multiple products are connected together, do not exceed the lowest of the indicated maximum wattage on the cord tag near the connected product's receptacle.

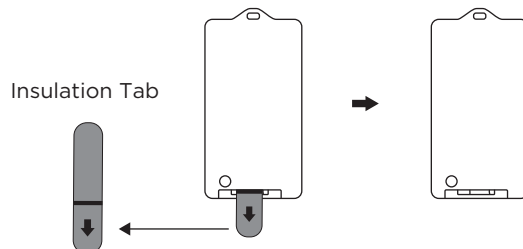
### Loose Hinge Pin

- Extra hinge pins are included for repairing the hinges. Place the branch into the slot of the bracket.
- Insert a new hinge pin through the hole and secure using the retainer washer. **(See Fig. E.)**



## OPERATING INSTRUCTIONS







Remove the insulation tab in the remote control.

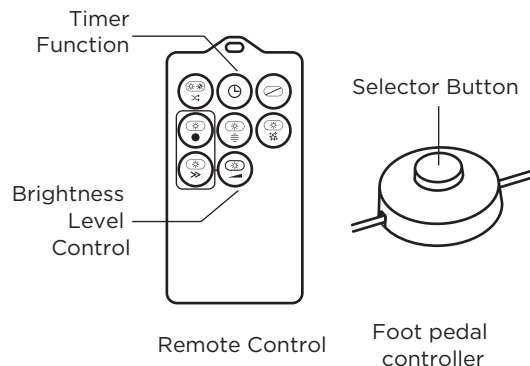


### How to Use the Remote Control and Light Controller

On the remote control, simply press the button to choose the light effect you want.

On the foot pedal controller, press the selector button to browse among:

- |  |   |
|--|---|
| 1. COMBINATION    | 2. CLEAR STEADY  |
| 3. CLEAR TWINKLE  | 4. CLEAR BLINK   |
| 5. CLEAR FADE     | 6. OFF           |




There are 5 brightness levels available in the Clear Steady and Clear Blink mode.

Use the "  " button on the remote control to increase or decrease the brightness level, one level at a time with each press.


### Demo Mode:

**NOTE: This tree offers a Demo Mode.** In this mode, the light effects are displayed one by one in sequence until another light function is selected. This temporary light effect will last for 15 seconds before returning to Demo Mode.

### To Activate DEMO Mode:

1. Using the Remote Control - Press the "  " button for 5 seconds./  
Using the Foot Pedal Controller - Press and hold the button on the foot pedal for 10 seconds.
2. The **clear lights will blink 3 times**, indicating that **DEMO mode is ON**.
3. The tree is now in demo mode.

### To Deactivate DEMO Mode:

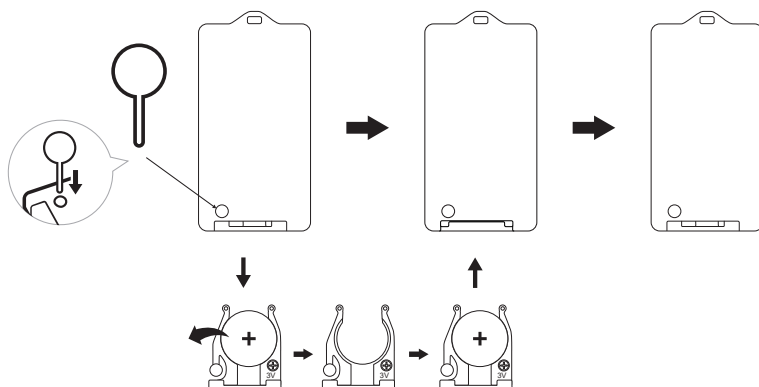
1. Using the Remote Control - Press the "  " button for 5 seconds./  
Using the Foot Pedal Controller - Press and hold the button on the foot pedal for 10 seconds.
2. The **clear lights will blink 5 times**, indicating that **DEMO mode is OFF**.
3. The tree is now in normal mode.

### Timer Functions:

1. To turn on the timer function, press the "Timer" button on the remote control once. The clear lights will flash 2 times, indicating the timer function is activated. The lights will stay ON for 6 hours and then OFF for 18 hours as a cycle until the timer function is turned off.
2. To turn off the timer function, press the "Timer" button again. The clear lights will flash 4 times, indicating the timer function is deactivated.

## BATTERY REPLACEMENT

1. Locate the push button near the battery tray at the rear.
2. Using a pin or similar object with a fine tip, press and hold down on the button while pulling on the battery tray to disconnect the tray from the remote controller.
3. Remove the pin and continue to pull the battery tray out completely.
4. Replace the old battery with a new one (battery type: CR2032). Be sure the new battery is installed with the correct polarity (+ and -).
5. Push the battery tray back into the remote control.



## ⚠ WARNING

1. This product is powered by a lithium battery. Due to their small size, lithium batteries can easily be swallowed by children. Ingestion of such batteries has been known to cause death.
2. Do not expose light set to moisture.
3. Remove battery when not used for an extended period of time, or when depleted.
4. Dispose of used battery properly.
5. Use only CR2032 battery for the remote controller.
6. Clean the battery contacts prior to battery installation.
7. Do not dispose of batteries in fire. Batteries may explode or leak.
8. Small parts. Keep batteries out of reach of children.
9. Non-rechargeable batteries are not to be recharged.
10. Keep batteries away from children. If swallowed, consult a physician at once. Ingestion may lead to serious injury or death.
11. Battery must be recycled or disposed of properly. Dispose of as per the requirements of your local municipality.

## CAUTION

1. To reduce the risk of fire and electric shock:
  - a) Use only the power supply that was provided with this product;
  - b) Do not install on trees having needles, leaves or branch covering of metal or materials which look like metal; and
  - c) Do not mount or support strings in a manner that can cut or damage wire insulation.
2. Use only the adaptor supplied with this product. Using a different adaptor will damage the lights and may cause fire or electric shock hazards.
3. The controller and remote controller (if included) can only be used with this product.

## SPARE PARTS

Included with each tree are hinge pins/washers.  
If extra parts are needed, please contact our customer service centre.

## WARRANTY

This product carries a one (1) year warranty against defects in workmanship and materials. Trileaf Distribution agrees to replace a defective product, within the stated warranty period, when returned to the place of purchase with proof of purchase. This product is not guaranteed against wear or breakage due to misuse and/or abuse.

Made in China  
Imported by:  
Trileaf Distribution Trifeuil Toronto, Canada M4S 2B8  
DATE CODE: 21825

## ⚠ WARNING

- **INGESTION HAZARD: DEATH** or serious injury can occur if ingested.
- A swallowed button cell or coin battery can cause **Internal Chemical Burns** in as little as **2 hours**.
- **KEEP** new and used batteries **OUT OF REACH OF CHILDREN**.
- **Seek Immediate medical attention** if a battery is suspected to be swallowed or inserted inside any part of the body.

## ⚠ AVERTISSEMENT

- **RISQUE D'INGESTION** : L'ingestion de ce produit peut entraîner **LA MORT** ou des blessures graves.
- Une pile bouton ou une pile plate avalée peut provoquer des **brûlures chimiques internes** en seulement **2 heures**.
- **GARDER** les piles neuves et usagées **HORS DE LA PORTÉE DES ENFANTS**.
- **Consulter immédiatement un médecin** si l'on soupçonne qu'une pile a été avalée ou insérée dans une partie quelconque du corps.

