



SIGNALISATION  
SIGNALLING

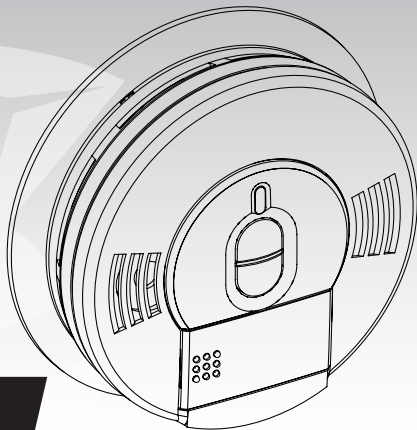


LISTED  
HOMOLOGUÉ

SINGLE STATION  
SMOKE ALARM

# SMOKE ALARM

model no. 46-0014-0



**Toll-free: 1-800-268-6591**

**IMPORTANT:** Please take a few minutes to thoroughly read this User Guide, which should be saved for future reference and passed on to any subsequent owner.

## User Guide

P/N 0970-7211-02 EN

Introduction	2
What To Do When The Alarm Sounds	3
Installation	5
Operation	13
Maintenance	17
Fire Safety	21
Warranty	27

Thank you for purchasing this smoke alarm. It is an important part of your family's home safety plan. You can trust this product to provide the highest quality safety protection. We know you expect nothing less when the lives of your family are at stake.

Please take a few minutes to thoroughly read this User Guide, and save it for future reference. Teach children how to respond to the alarms, and that they should never play with the unit.

If you have any questions about the operation or installation of your alarm, please call our toll-free helpline at 1-800-268-6591.

Smoke alarm pattern is three long beeps, a 1.5 second pause, and three long beeps repeating. The red LED blinks in time with alarm pattern.

- Alert small children in the home as well as anyone else that might have difficulty recognizing the importance of the alarm sounding or that might have difficulty leaving the area without help.
- Leave immediately by your escape plan. Every second counts, so don't waste time getting dressed or picking up valuables.
- In leaving, don't open any inside door without first feeling its surface. If hot, or if you see smoke seeping through cracks, don't open that door! Instead, use your alternate exit. If the inside of the door is cool, place your shoulder against it, open it slightly and be ready to slam it shut if heat and smoke rush in.
- If the escape route requires you to go through smoke, stay close to the floor where the air is cleaner. Crawl if necessary, and breathe shallowly through a cloth, wet if possible.

- Once outside, go to your selected meeting place and make sure everyone is there.
- Call the fire department from your cell phone outside, or from your neighbour's home—not from yours!
- Don't return to your home until the fire officials say that it is all right to do so.

There are situations where a smoke alarm may not be effective to protect against fire as stated in the NFPA Standard 72. For instance:

- a) Smoking in bed.
- b) Leaving children home alone.
- c) Cleaning with flammable liquids, such as gasoline.



**Model 46-0014-0** is designed to detect products of combustion using the ionization technique. This model contains 0.9 microcurie of Americium 241, a radioactive material. Distributed under U.S. NRC License No. 32-23858-01E. Manufactured in compliance with U.S. NRC safety criteria in 10 CFR 32.27. The purchaser is exempt from any regulatory requirements. Do not try to repair the smoke alarm yourself. Refer to the instructions in Warranty section for service.



**WARNING:** Battery door will not close unless battery is present. Removal of battery will render the smoke alarm inoperative.

**IMPORTANT:** Read all instructions before installation and keep this User Guide near the alarm for future reference.

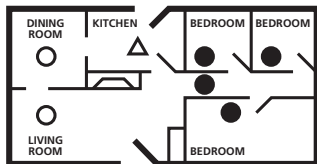
### Recommended Locations

- Locate the first alarm in the immediate area of the sleeping rooms. Try to monitor the exit path as the sleeping rooms are usually farthest from the exit. If more than one sleeping area exists, locate additional alarms in each sleeping area (Image 1A).
- Locate additional alarms to monitor any stairway as stairways act like chimneys for smoke and heat.
- Locate at least one alarm on every floor level (Image 1B).
- Locate an alarm in every sleeping room.
- Locate an alarm in every room where electrical appliances are operated (i.e., portable heaters or humidifiers).
- Locate an alarm in every room where someone sleeps with the door closed. The closed door may prevent an alarm not located in that room from waking the sleeper.
- Smoke, heat, and combustion products rise to the ceiling and spread horizontally. Mounting the smoke alarm on the ceiling in the centre of the room places it closest to all points in the room. Ceiling mounting is preferred in ordinary residential construction.
- For mobile home installation, select locations carefully to avoid thermal barriers that may form at the ceiling. For more details, see Mobile Homes section.
- When mounting an alarm on the ceiling, locate it at a minimum of 10 cm (4") from the side wall (Image 2A).
- When mounting the alarm on the wall, use an inside wall with the top edge of the alarm at a minimum of 10 cm (4") and a maximum of 30.5 cm (12") below the ceiling (Image 2A and 2B).
- Put smoke alarms at both ends of a hallway or large room if the hallway or room is more than 9.1 m (30') long. For large rooms, one smoke alarm is recommended for every 500 sq. ft. (46 m<sup>2</sup>) of floor space.
- Install smoke alarms on sloped, peaked or cathedral ceilings following the mounting guidelines outlined in Image 2A and 2B. NFPA 72 states: "Smoke alarms in rooms with ceiling slopes greater than 0.3 m in 2.4 m (1 foot in 8 feet) horizontally shall be located on the high side of the room" (Image 2B and 2C).



- In homes that are not well insulated, extreme heat or cold can be transferred from the outside to the inside through poorly insulated walls and roof. This may create a thermal barrier which can prevent the smoke from reaching an alarm mounted on the ceiling. If you are not sure about the insulation in your home, or if you notice that the outer walls and ceiling are either hot or cold, install the alarm

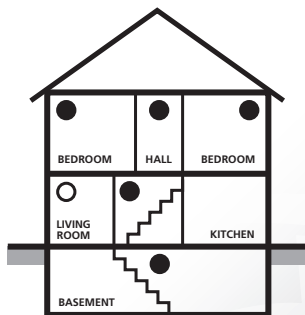
- on an inside wall. In such homes, install the smoke alarm with the top edge of the alarm at a minimum of 10 cm (4") and a maximum of 30.5 cm (12") below the ceiling (Image 2A).
- Install smoke alarms on tray-shaped ceilings (coffered ceilings) on the highest portion of the ceiling or on the sloped portion of the ceiling within 12" (305 mm) vertically down from the highest point (Image 2D).



- Required Smoke Alarms
- Smoke Alarms for Additional Protection
- △ Ionization Type Smoke Alarm with Hush® Control or Photoelectric Type

SINGLE FLOOR PLAN

IMAGE 1A



MULTIPLE FLOOR PLAN

IMAGE 1B

**Locations to Avoid**

- Do not install within 0.9 m (3') of the following: the door to a kitchen, or a bathroom that contains a tub or shower, forced air supply ducts used for heating or cooling, ceiling or whole house ventilating fans, or other high airflow areas.
- Do not place the alarm where drapes or other objects will block the sensor. Smoke must be able to reach the sensor to accurately detect conditions.
- Do not install in peaks of vaulted ceilings, "A" frame ceilings or gabled roofs.
- Install at least 30.5 cm (12") away from fluorescent lights as electronic noise may cause nuisance alarms.
- Keep out of insect-infested areas. Avoid excessively dusty, dirty or greasy areas. Dust particles may cause nuisance alarms or failure to alarm.
- Extreme temperatures may affect the sensitivity of the alarm. Do not install in areas where the temperature is colder than 4.4°C (40°F) or hotter than 37.8°C (100°F), such as garages and unfinished attics.
- Do not install in areas where the relative humidity (RH) is greater than 95% (non-condensing). Very humid areas, with moisture or steam, can cause nuisance alarms.
- Avoid placing smoke alarms in kitchen areas. Normal cooking may cause nuisance alarms. If a kitchen alarm is desired, it should have an alarm silence feature or be a photoelectric type.
- Do not place in the garage. Particles of combustion are present when you start your automobile.
- Smoke alarms are not to be used with detector guards unless the combination (alarm and guard) has been evaluated and found suitable for that purpose.
- Do not install near vents, flues, chimneys or any forced/unforced air ventilation openings.
- Do not install near fans, doors, windows or areas directly exposed to the weather.



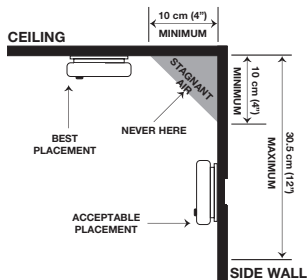


IMAGE 2A

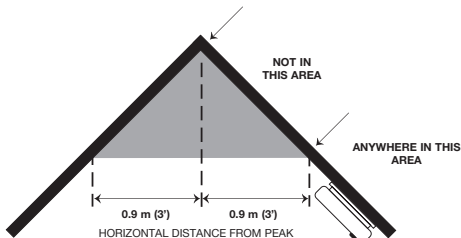


IMAGE 2B

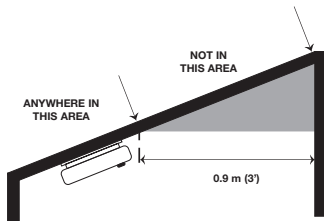


IMAGE 2C

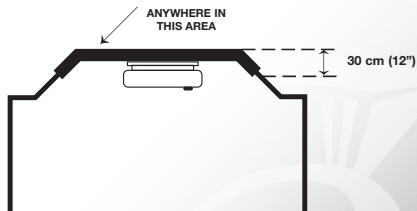


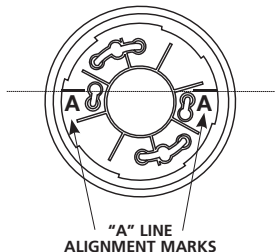
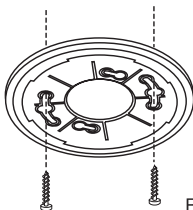
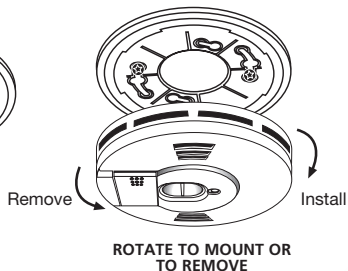
IMAGE 2D



**CAUTION:** This unit is sealed. The cover is not removable!

### Mounting

- After selecting the proper smoke alarm location as described previously, hold the mounting plate against the selected installation location (wall or ceiling) and mark the centre of the holes with a pencil. To ensure aesthetic alignment of the alarm with the hallway or wall, the “A” line on the mounting plate should be parallel with the hallway when ceiling-mounted, or horizontal when wall-mounted (Image 3A and 3B). Drill a hole through the pencil marks and use the enclosed screws and anchors to secure. Use 3/16” drill for anchor holes. Align the alarm with the mounting plate and rotate clockwise (right) until the unit is aligned.
- Install the alarm on the mounting plate and rotate the alarm in the direction of the “ON” arrow on the cover until the alarm ratchets into place (Image 3C). This ratcheting function allows for aesthetic alignment.

**IMAGE 3A****IMAGE 3B****IMAGE 3C**

**NOTE:** The alarm will attach to the mounting plate in 4 positions (every 90°).

## Mobile Homes

Modern mobile homes have been designed and built to be energy efficient. Install smoke alarms as recommended in Recommended Locations section and Image 2A.

In mobile homes that are not well insulated compared to present standards, extreme heat or cold can be transferred from the outside to the inside through poorly insulated walls and roof. This may create a thermal barrier that can prevent the smoke from reaching an alarm mounted on the ceiling. In such units, install the smoke alarm on an inside wall with the top edge of the alarm at a minimum of 10 cm (4") and a maximum of 30.5 cm (12") below the ceiling (Image 2A and 2B).

If you are not sure about the insulation in your mobile home, or if you notice that the outer walls and ceiling are either hot or cold, install the alarm on an inside wall. For minimum protection, install at least one alarm close to the sleeping rooms. For additional protection, see Image 1A and 1B.



**WARNING:** Test your smoke alarm operation after mobile home has been in storage or unoccupied, and at least once a week during use.



## Battery

This unit will not function without a properly installed battery, and is equipped with a battery lockout feature which prevents the battery door from closing if a battery is not installed correctly. See Maintenance section for additional information concerning battery installation.

- For initial installation a pre-installed 9 V battery is included with a battery pull tab that allows for easy connection. Simply pull the tab out, and the battery is connected! See Maintenance section for additional information concerning battery installation.
- Pull the battery pull tab (yellow tab protruding from the unit) completely out of the unit. This will automatically connect the battery.

---

The smoke alarm is operating once a fresh battery is installed and testing is complete. When the smoke alarm ionization sensor chamber senses products of combustion, the horn will sound a loud (85 db) alarm until the sensing chamber is cleared of smoke particles.

## Hush® Control Feature



**CAUTION:** This feature should only be used to silence an alarm that was activated by a readily known non-hazardous condition, such as smoke from cooking.

Combustion particles from cooking may set off the alarm if the alarm is located close to the cooking area. Large quantities of combustible particles are generated from spills or when broiling. Using the fan on a range hood that vents to the outside (non-recirculating type) will also help remove these combustible particles from the kitchen.

The Hush® button is extremely useful in a kitchen area or other areas prone to nuisance alarms.

The Hush® feature, activated by pushing the Test/Hush® button on the smoke alarm cover, temporarily desensitizes the alarm. If the smoke is not too dense, the alarm will silence, and the red LED will flash every 10 seconds for up to 8 minutes.



The smoke alarm will automatically reset to normal sensitivity after approximately 8 minutes. If after this period, particles of combustion are still present, the alarm will sound again.

The Hush® feature can be used repeatedly until the air has been cleared of the condition causing the alarm.

**NOTE:** Dense smoke will override the Hush® control feature and sound a continuous alarm.

### **LED Indicators**

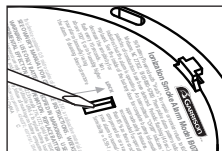
This alarm is equipped with a red LED indicator, with two modes of operation.

**Red LED - Flashing every 30–40 seconds:** Indicates that the smoke alarm is operating properly.

**Red LED - Flashing:** When the smoke alarm senses particles of combustion and goes into alarm (constant pulsating sound), the red LED will flash once per second. The flashing LED and pulsating alarm will continue until the air is cleared.

### Battery Tamper Resist Feature

This alarm has a battery tamper resist feature, which prevents the battery door from being opened. This feature is effective in preventing the removal of the battery from this device (which will render the unit inoperable). To activate the battery tamper resist feature, remove the unit from the mounting plate and locate the small cut-out in the middle of the product label on the back of the unit. With a small screwdriver, or similar tool, slide the switch towards the direction indicated by the arrows (Image 4). The tamper resist feature is now active and the battery door can not be opened until the tamper resist feature is deactivated.



BATTERY TAMPER RESIST SWITCH

IMAGE 4

**NOTE:** Before activating the battery tamper resist feature, make sure a fresh battery is installed in the unit and that the battery door is properly closed. If the battery tamper resist feature is activated while the battery door is open, the battery door will not close and the unit will be inoperable.





To deactivate the battery tamper resist in order to change the battery, remove the unit from the mounting plate and locate the small cut-out in the middle of the product label. Using a screwdriver or similar tool, slide the switch in the OPPOSITE DIRECTION OF THE ARROWS. The battery door can now be opened.

## Testing



**CAUTION:** Due to the loudness (85 db) of the alarm, always stand about 2 1/2' (76 cm) from the unit when testing.

Test by pushing the Test button on the cover and hold it down for a minimum of 5 seconds. This will sound the alarm if all the electronic circuitry, horn and battery are working. If no alarm sounds, the unit has a defective battery or some other failure. DO NOT use an open flame to test your alarm, you could damage the alarm or ignite combustible materials and start a fire.

Test the alarm weekly to ensure proper operation. Erratic or low sound coming from your alarm may indicate a defective alarm, and it should be returned for service (see Warranty section).

### Alarm Removal

To remove the alarm from the mounting plate, rotate the alarm in the direction of the “OFF” arrow on the cover.

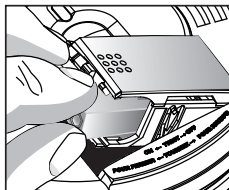
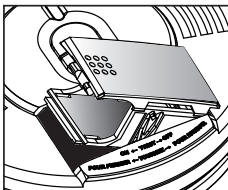
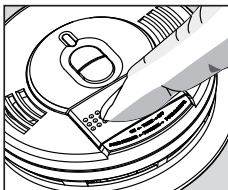
### Battery Removal

**NOTE:** If battery tamper resist feature has been activated it will need to be deactivated in order to change the battery. Refer to the Battery Tamper Resist Feature section for instructions.

To replace or install the battery press down on the battery door and then release to allow the door to pop open. The battery can then be pulled out (Image 5). When installing a new battery, make sure the battery terminals are facing outwards as illustrated inside the battery door, and that the polarity matches the markings printed. Completely press the battery door down into the alarm and release. The battery door will secure into the closed position.

A missing or improperly installed battery will prevent the battery door from closing and result in improper alarm operation.

This alarm has a low battery monitor circuit which will cause the alarm to “chirp” approximately every 30-40 seconds for a minimum of seven (7) days when the battery gets low. Replace the battery when this condition occurs.

**IMAGE 5****BATTERY DOOR OPERATION**

This smoke alarm uses a 9 V carbon-zinc battery (alkaline may also be used). A fresh battery should last for one year under normal operating conditions.

Use only the following 9 V batteries for replacement:

Carbon-zinc Type

Alkaline Type

Eveready 1222

Energizer 522, Duracell MN1604 or MX1604

Panasonic 6AM6, 6AM-6, 6AM-6PI, 6AM6X  
and 6LR61 (GA)

These batteries can be purchased at your local retailer.

**NOTE:** Do not use lithium batteries in this unit.

**NOTE:** Regular weekly testing is required!



**WARNING:** Use only the batteries specified. Use of different batteries than the recommended ones may have a detrimental effect on the smoke alarm. A good safety measure is to replace the battery at least once a year, or at the same time you change your clocks for daylight saving time. Be sure to follow the battery installation instructions printed on the back of the alarm.

### **Cleaning the Alarm**

The alarm should be cleaned at least once a year.

- To clean your alarm, remove it from the mounting plate as outlined in previous sections. You can clean the alarm by using compressed air or a vacuum cleaner hose with a soft brush attachment. Blow or vacuum around the perimeter of the alarm to remove dust and dirt. The outside of the alarm can be wiped with a damp cloth (do not use a wet cloth to avoid water entering the unit).
- After cleaning, reinstall your alarm and test your alarm by using the Test button. If cleaning does not restore the alarm to normal operation, the alarm should be replaced.



- Do not paint the unit. Paint will seal the vents and interfere with the sensor's ability to detect smoke. Never attempt to disassemble the unit or clean inside. This action will void your warranty.

### Replacing the Alarm

The National Fire Protection Association (NFPA) and Garrison® recommend replacing this alarm ten years from the date code label (located on the back of the alarm).



**WARNING:** Please read carefully and thoroughly.

### Limitations of Smoke Alarms

- NFPA 72 states: Fire-warning equipment for residential occupancies are capable of protecting about half of the occupants in potentially fatal fires. Victims are often intimate with the fire, too old or too young, or physically or mentally impaired such that they cannot escape even when warned early enough that escape should be possible. For these people, other strategies such as protection in place or assisted escape or rescue would be necessary.

- Leading authorities recommend that both ionization and photoelectric smoke alarms be installed to help ensure maximum detection of the various types of fires that can occur within the home. Ionization sensing alarms may detect invisible fire particles (associated with fast flaming fires) sooner than photoelectric alarms. Photoelectric sensing alarms may detect visible fire particles (associated with slow smouldering fires) sooner than ionization alarms.
- A battery-powered alarm must have a battery of the specified type, in good condition and installed properly.
- A.C. powered alarms (without battery backup) will not operate if the A.C. power has been cut off, such as by an electrical fire or an open fuse.
- Smoke alarms must be tested regularly to make sure the batteries and the alarm circuits are in good operating condition.
- Smoke alarms cannot provide an alarm if smoke does not reach the alarm. Therefore, smoke alarms may not sense fires starting in chimneys, walls, on roofs, on the other side of a closed door or on a different floor.
- If the alarm is located outside the sleeping room or on a different floor, it may not wake up a sound sleeper.
- The use of alcohol or drugs may also impair one's ability to hear the smoke alarm. For maximum protection, a smoke alarm should be installed in each sleeping area on every level of a home.

- Although smoke alarms can help save lives by providing an early warning of a fire, they are not a substitute for an insurance policy. Home owners and renters should have adequate insurance to protect their lives and property.

### **Good Safety Habits**

Develop and practice a plan of escape!

- Make a floor plan indicating all doors and windows and at least two (2) escape routes from each room. Second story windows may need an escape ladder.
- Have a family meeting and discuss your escape plan, showing everyone what to do in case of fire.
- Determine a place outside your home where you all can meet if a fire occurs.
- Familiarize everyone with the sound of the smoke alarm and train them to leave your home when they hear it.
- Practice a fire drill at least every six months, including fire drills at night. Ensure that small children hear the alarm and wake when it sounds. They must wake up in order to execute the escape plan. Practice allows all occupants to test your plan before an emergency. You may not be able to reach your children. It is important they know what to do.

- Install and maintain fire extinguishers on every level of the home and in the kitchen, basement and garage. Know how to use a fire extinguisher prior to an emergency.
- Current studies have shown smoke alarms may not awaken all sleeping individuals, and that it is the responsibility of individuals in the household that are capable of assisting others to provide assistance to those who may not be awakened by the alarm sound, or to those who may be incapable of safely evacuating the area unassisted.

### **NRC Information**

Ionization type smoke alarms use a very small amount of a radioactive element in the sensing chamber to enable detection of visible and invisible combustion products. The radioactive element is safely contained in the chamber and requires no adjustments or maintenance. This smoke alarm meets or exceeds all government standards. It is manufactured and distributed under license from the U.S. Nuclear Regulatory Commission.



## Additional Recommendations

Fire Safety in the Home: NFPA 72 is intended to provide reasonable safety for persons in family living units. Reasonable fire safety can be produced through the following three-point program:

- (1) Minimizing fire hazards.
- (2) Providing fire-warning equipment.
- (3) Having and practicing an escape plan.

Where required by other governing laws, codes, or standards for a specific type of occupancy, approved single and multiple-station smoke alarms shall be installed as follows:

- (1) In all sleeping rooms and guest rooms.
- (2) Outside of each separate dwelling unit sleeping area, within 6.4 m (21') of any door to a sleeping room, with the distance measured along a path of travel.
- (3) On every level of a dwelling unit, including basements.
- (4) On every level of a residential board and care occupancy (small facility), including basements and excluding crawl spaces and unfinished attics.
- (5) In the living area(s) of a guest suite.
- (6) In the living area(s) of a residential board and care occupancy (small facility).

**Smoke Detection – Are More Smoke Alarms Desirable?**

The required number of smoke alarms (as shown in Image 1A and Image 1B) might not provide reliable early warning protection for those areas separated by a door from the areas protected by the required smoke alarms. For this reason, the use of additional smoke alarms for those areas is recommended for increased protection.

The additional areas include the basement, bedrooms, dining room, furnace room, utility room, and hallways not protected by the required smoke alarms. The installation of smoke alarms in kitchens, attics (finished or unfinished) or garages is not normally recommended, because these locations occasionally experience conditions that can result in improper operation.

Alarms should be installed in accordance with the National Fire Protection Association's Standard 72 (NFPA, Batterymarch Park, Quincy, MA 02269).



## 10-Year Limited Warranty

Trileaf Distribution Trifeuil warrants to the original retail customer of the enclosed smoke alarm is free from defects in material or workmanship under normal use and will be repaired or replaced free of charge for a period of ten years from the date of purchase (part replacement only, no installation).

This limited warranty applies only if:

- (a) You send the Product to us with proof of date of purchase, postage and return postage prepaid, to Trileaf Distribution Trifeuil Toronto, Canada M4S 2B8.
- (b) The Product has not been damaged, modified, abused, altered, improperly maintained, or used contrary to its instructions after the date of purchase.

THE LIABILITY OF TRILEAF DISTRIBUTION TRIFEUIL OR ITS DEALERS, ARISING FROM THE SALE OF THE PRODUCT OR UNDER THE TERMS OF THIS LIMITED WARRANTY SHALL NOT IN ANY CASE EXCEED THE COST OF REPLACEMENT OF THE PRODUCT AND, IN NO CASE, SHALL TRILEAF DISTRIBUTION TRIFEUIL OR ANY OF ITS DEALERS BE LIABLE FOR CONSEQUENTIAL LOSS OR DAMAGE RESULTING FROM THE FAILURE OF THE PRODUCT OR FOR BREACH OF THIS OR ANY OTHER WARRANTY, EXPRESS OR IMPLIED, EVEN IF THE LOSS OR DAMAGE IS CAUSED BY NEGLIGENCE OR FAULT OF TRILEAF DISTRIBUTION TRIFEUIL.

This limited warranty is in lieu of any other warranty, express or implied, of merchantability and fitness for a particular purpose. This warranty is not transferable. Some provinces do not allow limitations on the duration of an implied warranty or the exclusion or limitation of incidental or consequential damages or limitations on transferability, so the above limitations or exclusions may not apply to you. This warranty gives you specific legal rights and you may also have other rights which vary from province to province.

**IMPORTANT:** Do not remove unit back cover. Back cover removal will void warranty. Your Garrison alarm is not a substitute for property, disability, life or other insurance of any kind. Appropriate insurance coverage is your responsibility. Notify your local fire department and insurance company of your smoke alarm installation.

For more information on this product, call 1-800-268-6591.

Made in China. Manufactured for Trileaf Distribution Trifeuil.  
Toronto, Canada M4S 2B8