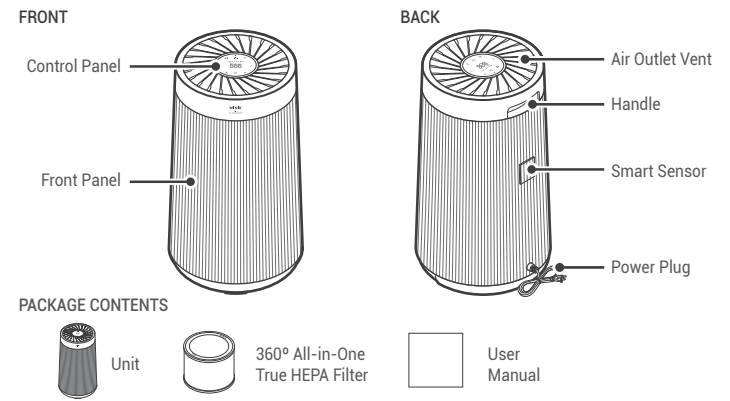
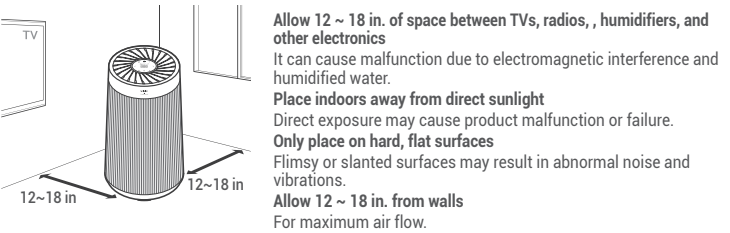


MODEL PART DIAGRAM

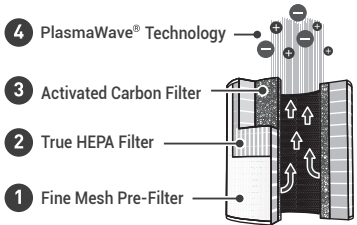


WHERE TO USE



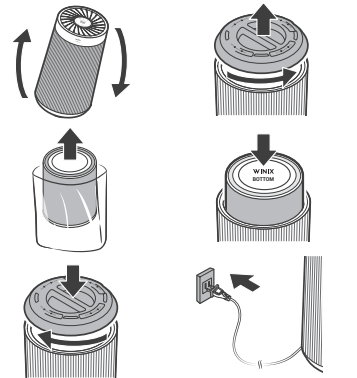
4-STAGE AIR PURIFICATION

Air Purification means it removes inanimate particles



INITIAL OPERATION

- 1. Turn the product upside down.
- 2. Grab the handle at the bottom of the product, turn counter-clockwise, and pull out the filter cover.
- 3. Remove the protective vinyl from the filter installed inside the product.
- 4. Install the filter top side down into the bottom of unit until it is fully inserted. The top of the filter shows the opening and the bottom of the filter is solid.
- 5. After installing the filter, turn the handle clockwise to close the filter cover.
- 6. Return the product to an upright position and resume normal operation.



MAINTENANCE

When to Replace Filters

Filter	Indicator Light	When to Service	When to Replace
360° All-in-One True HEPA Filter	Check Filter	Clean once every 14 days	Lasts Approx. 12 months

- When the Check Filter indicator LED is on, it is time to replace the All-in-One True HEPA Filter.
- Intervals between filter replacement may vary depending on environment.

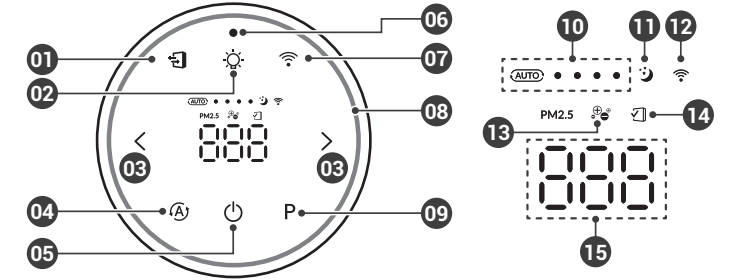
REPLACING FILTERS

**Resetting Filter Life:**  
After replacing the 360° All-in-One True HEPA Filter, use a small object such as a While the unit is on, hold the Filter Reset Button for at least 5 seconds until you hear the beep. After the beep, the Filter Replacement Indicator will disappear.

Guide to Fine Dust Concentration (Unit: $\mu\text{g}/\text{m}^3$ )			
BLUE	GREEN	ORANGE	RED
0 ~ 35	36 ~ 55	56 ~ 150	150 ~ or higher

\*PM2.5

CONTROL PANEL



- 01. Filter Life / Filter Reset Button**
  - A quick press will show the remaining filter life: indicated on the front display (F99 ~ F00).
  - A long press of 10 seconds will reset the filter life indicator.
    - Use when replacing the filters.
    - Filter Reset Button can be used when the power is turned off.
    - The filter life will be reset to 100%.
- 02. Light Mode Button**

Use the light button to set the desired display brightness. The display brightness cycles in the order of 100% → 70% → 30% → OFF. Other features remain unchanged.
- 03. Fan Speed Indicator Buttons**

Indicates the current fan speed.

  - Use the Fan Speed arrow buttons to set the desired fan speed. Fan speeds cycle over in this sequence: Auto, Low, Medium, High, Turbo.
- 04. Auto Mode Button**

The unit will default to Auto with PlasmaWave® enabled when first powered on.

  - Auto Mode automatically adjusts fan speeds according to your indoor air quality. The fan speed will adjust to low when air quality is good, medium when fair, and to high when poor.
- 05. Power Button**

Turns the unit on or off. During the first 30 seconds of power, the Air Quality Indicator will cycle through Blue, Green, Amber and Red colors.

  - Smart Sensor takes approximately 30 seconds to detect the air quality in the environment before normal operation begins.
- 06. Light Sensor**

Detects the amount of ambient light in the environment. When in Auto Mode, the light sensor detects when to put the unit into Sleep Mode.
- 07. Wi-Fi / Pairing Button**
  - A quick press will turn Wi-Fi on/off.
  - A long press of 3 seconds will activate pairing mode.
  - A Wi-Fi indicator will display on the front while Wi-Fi is active.
- 08. Air Quality Indicator**

Color coded LED light indicates one of four levels of Air Quality: Red (poor), Amber (fair), Green (average) and Blue (good).
- 09. PlasmaWave® Button**

Enables or disables PlasmaWave®. When the unit is running, you may hear a chirping or buzzing sound. The sound is from particles passing through PlasmaWave®, it is normal and does not signify product failure. Press the PlasmaWave® Technology button when the unit is on to enable or disable this feature.
- 10. Mode Indicator**

Indicates whether Auto & Fan Speed Mode is enabled or disabled.
- 11. Sleep Mode Indicator**

Indicates whether Sleep Mode is enabled or disabled.
- 12. Wi-Fi Indicator**

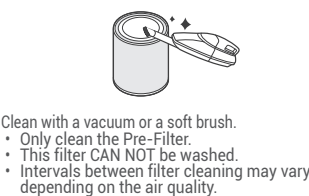
Indicates whether Wi-Fi Mode is enabled or disabled.
- 13. PlasmaWave® Indicator**

Indicates whether PlasmaWave® is enabled or disabled.
- 14. Filter Replacement Indicator**

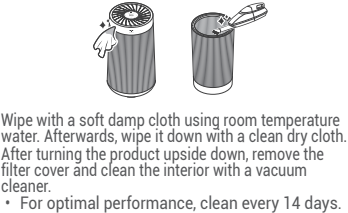
LED light indicates when it is time to change the filter.
- 15. Ultrafine Dust Density Indicator**
  - The LED Ultrafine Dust Density Indicator displays the quality of air in your environment.
  - When the unit senses an air quality change, it automatically adjusts the LED Indicator to display the respective air quality.
  - LED Numeric Smart Sensor displays air quality measures fine particles down to 2.5 microns.

CLEANING CARE

Cleaning the Filters:



Cleaning the Exterior & Interior:



- NOTICE**
  - When cleaning the unit, always unplug the power cord first and then wait until the unit has cooled down.
  - Never disassemble, repair, or modify this unit yourself.
  - Do not use flammable sprays or liquid detergents.
  - Do not allow children to clean or maintain the unit.
  - Before cleaning or maintaining, ensure unit is unplugged.
  - Do not use benzene, alcohol, or other volatile fluids, which may cause damage or discoloration.

UNIT SPECIFICATIONS

Model Name	T810, T820, T830	Dimensions	11.3 in(W) x 11.3 in(D) x 20.4 in(H)
Power Voltage	AC 120 V / 60 Hz	Weight	10.2 lbs
Power Rate	45 W	Replacement Filter	R
Verified Room Size	410 sq.ft.		

The exterior, design, and product specifications may be changed without prior notice to improve product performance.

Contact Winix for product related inquiries and customer service

- Dedicated Call Center: ☎ (877) 699-4649
- Website: [www.winixamerica.com](http://www.winixamerica.com)

To expedite service, please specify the model name and number, the nature of the problem, your contact information, and your address.

SAFETY AND CAUTIONS

Before operating this equipment, carefully read and follow these safety cautions.

**Ensure filters are inserted before running unit.**  
Running the unit without filters may shorten the lifespan of the unit and cause electric shock or injury.

**Be sure foreign objects are NOT inserted into the vents on the unit.**  
Objects can include pins, rods, and coins.

**Do not touch any part of the interior of the unit with wet hands.**  
The high voltage may cause electric shock.

**Ensure unit intake and outlet vents do not become blocked.**  
Blockage may lead to increased internal temperatures, causing product failure and deformation.

**Do not use the unit as a step stool or place heavy objects on it.**  
Personal injury may occur or product failure and deformation.

**When turning the product upside down, install the filter with care in the direction that the bottom (blocked) side of the filter is visible from the top.**  
If the filter direction is not installed properly, it may cause product damage and user injury.

**WARNING**

Follow these instructions to reduce the risk of serious injury or death and to reduce risk of damaging the unit.

- If the power cord is damaged, it must be replaced with a special cord. Assembly available from the manufacturer or its service agent.
  - This appliance is not intended for use by a person (including children) with reduced physical sensory or mental capabilities, or lack of experience and knowledge, unless they have been given supervision or instruction concerning use of the appliance by a person responsible for their safety.
  - Children should be supervised to ensure that they do not play with the appliance.
  - This unit is not intended to be used to preserve documents or in art conservation.
- Do not pull on the power cord when unplugging the unit.
- Do not tie or knot the power cord when unit is in operation.

LIMITED WARRANTY

The terms of the limited warranty are as follows.

1. This product is manufactured under stringent quality control and inspections.
2. The limited warranty will be voided if product failure is a result of negligence or misuse by the consumer.
3. A proof of purchase must be presented upon claiming a limited warranty.
4. Store the proof of purchase in a safe place or register your product on winixamerica.com to upload your proof of purchase.
5. This limited warranty is valid only in the USA and Canada.

\* for more information visit <https://winixamerica.com/terms-and-conditions/>

- If the unit becomes submerged in water, unplug it and contact customer service.
- Do not unplug or move the unit while in operation.
- Do not plug additional appliances into the same outlet or power supply.
- Do not touch the plug with wet hands.
- Unplug the unit when not in operation for extended periods of time.
- Do not place around heating elements.
- Do not use around mist or fumes from industrial oil or around large quantities of metallic dust.
- The cord can become damaged by forcefully bending, pulling, twisting, bundling, pinching or placing heavy objects on it.
- Do not install in any sort of motor or transport vehicle (trucks, boats, ships, etc.).
- Do not place in an area with excessive amounts of noxious gases.
- Do not place near any flammable materials (aerosols, fuel, gases, etc.).
- Do not have the unit facing into wind or drafts.
- Do not place below any electrical outlet.
- Do not place in excessively humid areas where the unit may become wet.
- To reduce the risk of fire or electric shock, do not use this fan with any solid-state speed control device.
- Do not place unit closer than 12 inches from the wall during operation. It may cause condensation on the wall and the surrounding area.
- After winter product delivery/installation and initial operation, there may be condensation inside the sensor due to indoor/outdoor temperature differences, which can temporarily result in a display of 5 µg/m³ dust concentration and blue maintenance of cleanliness.
- Please use it with confidence as it will disappear after running for about 1-2 hours during initial operation.  
The minimum value of dust concentration displayed on the product is 5 µg/m³.

SAFETY INSTRUCTIONS

Thank you for purchasing a Winix air purifier. This product is for household use only.

IMPORTANT CAUTIONS FOR USING YOUR AIR PURIFIER

WARNING:

Follow the instructions in this manual to reduce the risk of electric shock, short circuit, and/or fire.

- Do not repair or modify the unit. All repairs should be completed by a qualified technician.

• Do not use if the power cord or plug is damaged or the connection to the wall outlet is loose.

• Use AC 120 V only.

• Do not damage, break, forcefully bend, pull, twist, bundle, coat, pinch, or place heavy objects on the power cord.

• Periodically remove dust from the power plug. This will reduce the risk of shock due to humidity build up.

• Remove the power plug from the outlet before cleaning the unit. When removing the power plug, grasp by holding the plug itself, never hold by the cord.
- If the power plug is damaged, it must be replaced by the manufacturer or a qualified technician.

• Remove the power plug from the outlet when not in use.

• Do not handle the power plug with wet hands.

• Do not operate the unit when using indoor smoke-generating insecticides.

• Do not clean unit with benzene or paint thinner. Do not spray insecticides on the unit.

• Do not use the unit where it is humid or where the unit may become wet, such as the bathroom.

• Do not insert fingers or foreign objects into air intake or outlet.

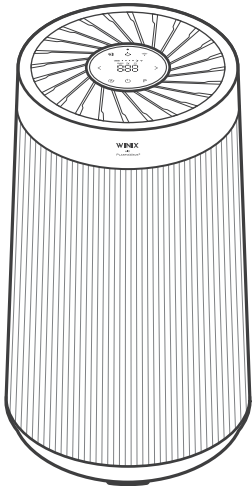
• Do not use the unit near flammable gases. Do not use near cigarettes, incense, or other spark-creating items.

• Unit will not remove carbon monoxide emitted from heating appliances or other sources.

IMPORTANT PRECAUTIONS FOR USING YOUR AIR PURIFIER

- Do not block the intake or outlet vents.
- Do not use near hot objects, such as a stove.
- Do not use where the unit may come into contact with steam.
- Do not use the unit on its side.
- Keep away from products that generate oily residue, such as a deep fryer.
- Do not use detergent to clean the unit.
- Do not operate without a filter.
- Do not wash and reuse the 360° All-in-One True HEPA Filter.
- Hold the handle on the back of the unit to transport.
- Do not hold by the front panel.
- Do not stick any small objects in the air outlet vents or fan.

WINIX  
AIR PURIFIER



T810, T820, T830 USER MANUAL



The energy efficiency of this ENERGY STAR certified model is measured based on a ratio between the model's CADR for smoke and the electrical energy it consumes, or CADR/Watt.

- The product warranty is printed on the back of this guide. This product is manufactured for use only in USA / CANADA This product is suitable for 120 V only.