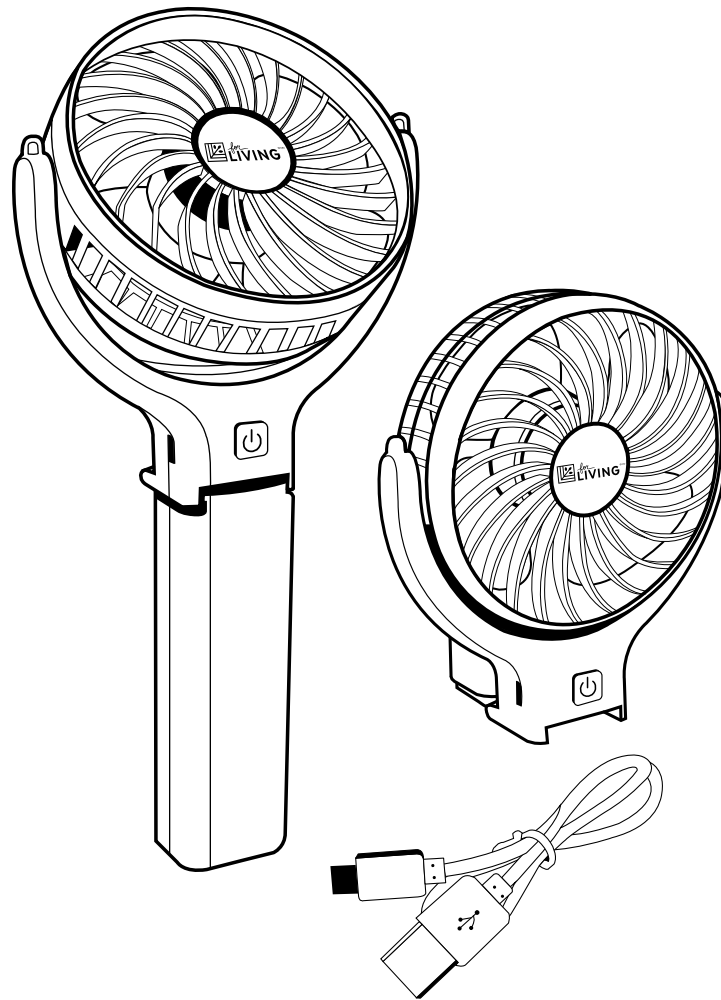




Compact Personal Fan

Product No. 043-8603-6



Installation and User Manual

IMPORTANT: Please read this manual carefully before beginning assembly of this product.

Before beginning assembly of product, make sure all parts are present.

Questions? If you have any questions or need replacement parts, please call our toll-free helpline at **1-877-483-6759**.

Keep this manual for future reference.

Table of Contents

Technical Data	2
Important Safety Instructions	3
Key Parts Diagram	4
Important Information	5
Care and Maintenance	6
Warranty	7

Operating Voltage

5 V A.C.



Warning! As with all electrical appliances, basic safety precautions should always be followed to reduce the risk of electric shock, fire, or injury to persons, including the following precautions:

- Read all the instructions before using this fan.
- Use this fan only as described in this manual. Any other use not recommended by the manufacturer may cause electric shock, fire or injury to persons.
- Do not operate the fan with a damaged power cord or after the fan malfunctions or has been dropped in any manner.
- Do not leave the fan unattended.
- This appliance is not intended for use by persons (including children) with reduced physical, sensory or mental capabilities or lack of experience and knowledge, unless they have been given supervision or instruction concerning use of the appliance by a person responsible for their safety.
- Do not place the fan on a small, unlevel, uneven surface, or any surface which might allow fan to tip or fall.
- For proper operation, fan should be placed on a smooth, non-combustible, level surface.
- Always unplug fan when not in use.
- Do not operate the fan with blade guards or any safety device removed.
- Do not run power cord under carpeting. Do not cover cord with throw rugs, runners or the like. Arrange cord away from traffic area where it will not be tripped over.
- Avoid the use of extension cords due to risk of fire. If an extension cord must be used, the cord must be minimum 14 AWG and rated not less than 1875 W.
- Do not insert or allow any object to enter any openings on the fan. Doing so may cause electric shock and/or fire hazard. Avoid contact with moving parts.



Warning! Shock Hazard

- Use your fan only in dry environments. This fan is not intended for use in a bathroom, laundry area, or similar locations, or near sinks, washing machines, swimming pools or other sources of water. Never locate fan where it may fall into a bathtub or other water receptacle. Do not use in damp environments such as flooded basements.



Warning! Fire Hazard

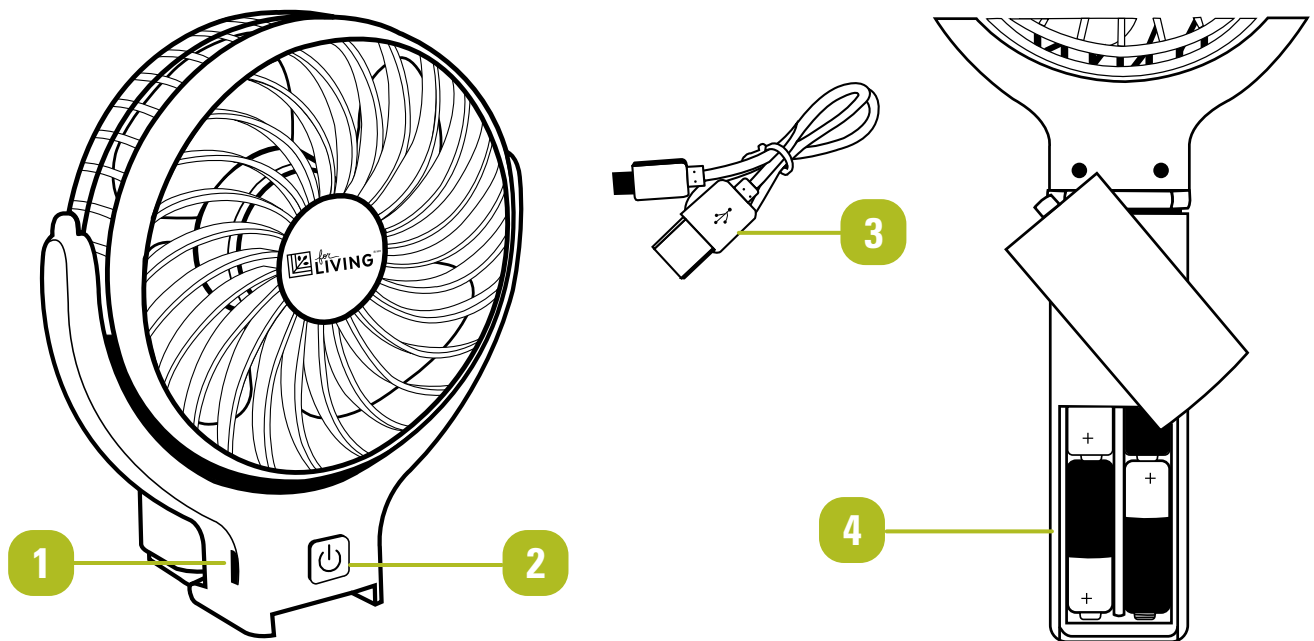
- Fans have arcing or sparking parts inside. Do not use near combustible materials or flammable gases or sources of heat. DO NOT USE in areas where gasoline, paint or flammable materials are used or stored. To prevent a possible fire, do not block air intakes or exhaust in any manner. Do not insert or allow foreign objects to enter any ventilation or exhaust opening as this may cause an electric shock, fire, or damage the fan.

IMPORTANT: RETAIN FOR FUTURE REFERENCE, AND READ CAREFULLY.

Use Instructions

The fan head can be tilted up and down to cool from any angle. Fold the handle to create a desk fan.

- Uses 4xAA Batteries (not included) or included USB Power Cord
- Can also be used with 5 V A.C. adaptor (not included)



1

USB Port

2

Power Switch

3

USB Power Cord

4

4 x AA Battery Compartment

Laptop Computer Users Note

When plugged into your laptop USB port, this USB fan gets its power from the computer laptop. To avoid battery drain, plug laptop computer into a receptacle while using this fan.

1. Features

- 1.1. Uses 4xAA Batteries or Included USB Cord**
- 1.2. Runs on Computer, Laptop or Car USB Adaptor**
- 1.3. Handle Folds for Desktop Use**
- 1.4. Plastic Body and Blades**
- 1.5. Adjustable Tilt Angle**
- 1.6. Push-button Power Switch**
- 1.7. Powerful and Quiet**

**Warning!**

- Before cleaning the fan be sure to disconnect power cord from the plug.

Cleaning

Unscrew and remove front grille only. Clean the grille and fan blade surface with a clean, damp cloth. Do not use harsh chemical or abrasive cleaners. **DO NOT IMMERSE THE FAN OR ANY WIRES IN WATER.** Allow fan to dry completely before use. Replace front grille before use. Periodic grille cleaning with a vacuum will prevent dust build up. The motor is sealed and does not require any interior maintenance, cleaning or lubrication.

Repair

DO NOT OPERATE THE FAN WITHOUT THE GRILLE IN PLACE. DO NOT USE THE FAN IF IT HAS MALFUNCTIONED OR BECOME DAMAGED IN ANY WAY.

Storage

Keep original carton for storage of the fan. Coil and tie the power cord to avoid damage during storage.

This product is guaranteed for 12 months from the date of original retail purchase against defects in materials and workmanship.

Subject to the conditions and limitations described below, this product, if returned to us with proof of purchase within the stated warranty period and if covered under this warranty, will be repaired or replaced (with the same model, or one of equal value or specification), at our option. We will bear the cost of any repair or replacement and any costs of labour relating thereto.

This warranty is subject to the following conditions and limitations:

- a bill of sale verifying the purchase and purchase date must be provided;
- this warranty will not apply to any product or part thereof which is worn or broken or which has become inoperative due to abuse, misuse, accidental damage, neglect, or lack of proper installation, operation, or maintenance (as outlined in the applicable owner's manual or operating instructions) or which is being used for industrial, professional, commercial, or rental purposes;
- this warranty will not apply to normal wear and tear or to expendable parts or accessories that may be supplied with the product which are expected to become inoperative or unusable after a reasonable period of use, including but not limited to finish, glass coverings, and remote controls;
- this warranty will not apply to routine maintenance;
- this warranty will not apply where damage is caused by repairs made or attempted by others (i.e., persons not authorized by the manufacturer);
- this warranty will not apply to any product that was sold to the original purchaser as a reconditioned or refurbished product (unless otherwise specified in writing);
- this warranty will not apply to any product or part thereof if any part from another manufacturer is installed therein or any repairs or alternations have been made or attempted by unauthorized persons;
- this warranty will not apply to normal deterioration of the exterior finish, such as, but not limited to scratches, dents, paint chips, or to any corrosion or discolouring by heat, abrasive and chemical cleaners; and
- this warranty will not apply to any component part sold by and identified as the product of another company, which shall be covered under the product manufacturer's warranty, if applicable.

Additional Limitations

This warranty applies only to the original purchaser and may not be transferred. Neither the retailer nor the manufacturer shall be liable for any expense, loss, or damage, including, without limitation, any indirect, incidental, consequential, or exemplary damages arising in connection with the sale, use, or inability to use this product.

Notice to Consumer

This warranty gives you specific legal rights, and you may have other rights, which may vary from province to province. The provisions contained in this warranty are not intended to limit, modify, take away from, disclaim or exclude any statutory warranties set forth in any applicable provincial or federal legislation.

Imported by

Trileaf Distribution Trifeuil Toronto, Canada M4S 2B8

For any help, please contact the customer service at:

1-877-483-6759

(Monday-Friday 8:00-7:00pm EST, Saturday 9:00-7:00pm EST)