

# POWERFRESH<sup>®</sup> **USER GUIDE**



1940 SERIES

# IMPORTANT SAFETY INSTRUCTIONS

**READ ALL INSTRUCTIONS BEFORE USING YOUR STEAM MOP.**

When using an electrical appliance, basic precautions should be observed, including the following:  
Always connect to a polarized outlet (left slot is wider than right). Unplug from outlet when not in use and before conducting maintenance.

## **WARNING** **TO REDUCE THE RISK OF FIRE, ELECTRIC SHOCK, OR INJURY:**

- » Do not direct steam at people, animals, or at electrical outlets.
- » Do not expose to rain.
- » Store indoors.
- » Unplug from outlet when not in use and before conducting maintenance or troubleshooting.
- » Do not leave steam cleaner unattended.
- » Do not expose hair, loose clothing, fingers or body parts to openings or moving parts.
- » Do not service steam cleaner when it is plugged in.
- » Do not handle steam cleaner with wet hands.
- » Do not use steam cleaner if it has been dropped, damaged, left outdoors or dropped into water, return it to a service center.
- » Do not pull or carry by cord, use cord as a handle, close door on cord, pull cord around sharp corners or edges, or expose cord to heated surfaces.
- » Do not unplug by pulling on cord.
- » Do not use appliance in an enclosed space filled with vapor given off by oil-base paint, paint thinner, some moth proofing substances, flammable dust, or other explosive or toxic vapors.
- » Do not allow to be used as a toy.
- » Do not use on leather, wax polished furniture or floors, synthetic fabrics, velvet or other delicate, steam-sensitive materials.
- » Do not immerse.
- » Not for space heating purposes
- » Do not use for any purpose other than described in this User's Guide.
- » Use only manufacturer's recommended attachments - use of attachments not provided or sold by BISSELL may cause fire, electric shock or injury.
- » Never put descaling, aromatic, alcoholic or detergent products into the steam cleaner, as this may damage it or make it unsafe for use.
- » Unplug by grasping the plug, not the cord.
- » Close attention is necessary when used by or near children.

## SAVE THESE INSTRUCTIONS FOR FUTURE USE

This model is for household use only. Commercial use of this unit voids the manufacturer's warranty.

**THIS APPLIANCE HAS A POLARIZED PLUG**

To reduce the risk of electric shock, this appliance has a polarized plug (one blade is wider than the other). This plug will fit in a polarized outlet only one way. If the plug does not fit fully in the outlet, reverse the plug. If it still does not fit, contact a qualified electrician to install a proper outlet. Do not change the plug in any way.

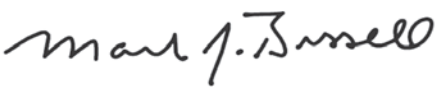
Thanks for buying a BISSELL hard floor cleaner

We're glad you purchased a BISSELL hard floor cleaner. Everything we know about floor care went into the design and construction of this complete, high-tech home cleaning system.

Your BISSELL hard floor cleaner is well made, and we back it with a limited two-year warranty. We also stand behind it with a knowledgeable, dedicated Consumer Care department, so, should you ever have a problem, you'll receive fast, considerate assistance.

My great-grandfather invented the floor sweeper in 1876. Today, BISSELL is a global leader in the design, manufacture, and service of high quality homecare products like your BISSELL hard floor cleaner.

Thanks again, from all of us at BISSELL.

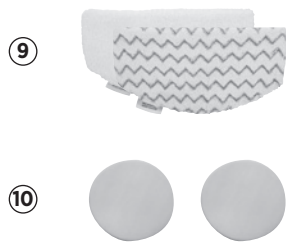


Mark J. Bissell  
Chairman & CEO

Safety Instructions.....	2
Product View.....	4
Assembly .....	5
Operations .....	6-8
Maintenance & Care .....	9
Troubleshooting .....	9
Replacement Parts .....	10
Accessories .....	10
Warranty .....	11
Service.....	11
Consumer Care.....	12

# Product View

- 1 Strain Reliever Handle™
- 2 Quick Release™ Cord Wrap
- 3 Removable Water Tank
- 4 Lower Cord Wrap
- 5 Smart Set™ Steam Control
- 6 Low Profile, Edge-Cleaning Mop Head
- 7 Maneuverable Swivel
- 8 Removable Easy Scrubber
- 9 Washable Microfiber Mop Pads (quantity may vary)
- 10 Spring Breeze® Fragrance Discs (quantity may vary)



# Assembly

Your PowerFresh® Steam Mop assembles quickly and easily. It is packaged with the following items:

- Handle Assembly with one screw
- Lower Body
- Maneuverable Mop Head
- Removable Water Tank
- Removable Easy Scrubber (attached to mop head)
- PowerFresh® Steam Mop Pads (quantity may vary)
- Spring Breeze® Fragrance Discs (quantity may vary)

1. Attach lower body to mop head by snapping it into place.
2. Slide handle assembly down and screw until tightened.

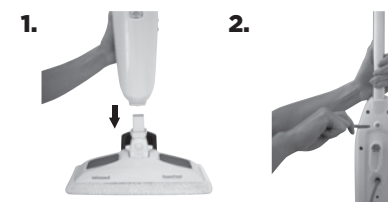
PowerFresh Steam Mop assembly is now complete.

## ! WARNING

Exercise extreme care when using your steam mop on hardwood floors. Prolonged application of steam in one area increases the risk of damage to the surface treatment on timber floors. Test steam mop in an inconspicuous area before mopping a large area. The steam mop generates hot steam, so move the unit continuously when depressing the trigger. The trigger does not need to be depressed at all times. Regular foot traffic and direct sunlight will wear down timber floor surface treatment, making it more susceptible to steam damage. Check with your timber floor treatment and application specialist prior to steam mop operation.

## ! WARNING

Do not plug in your hard floor cleaner until you are familiar with all instructions and operating procedures.



## ! WARNING

Plastic film can be dangerous. To avoid danger of suffocation, keep away from babies and children.

## ! WARNING

Do not plug in your hard floor cleaner until you are familiar with all instructions and operating procedures.

## ! WARNING

To reduce the risk of electric shock, turn power switch off and disconnect polarized plug from electrical outlet before performing maintenance or troubleshooting checks.

# Operations

## Special Features

### Removable water tank

The water tank is located on the top of the PowerFresh® Steam Mop. It can be refilled with water any time during use. Distilled or demineralized water is recommended in place of tap water.

**Do not use chemicals in the water tank of your PowerFresh Steam Mop.**

### SmartSet™ Steam Control

(Low, Medium, High) SmartSet™ Steam Control indicator light will stop blinking when PowerFresh® Steam Mop is ready to use. Then press the Steam Level button to choose the level of steam you desire.

### Microfiber Mop Pads

Reusable microfiber mop pads are machine washable and safe for virtually all hard floor surfaces. Your PowerFresh may have come with two different pads. The white microfiber pad is best for everyday use on delicate flooring like sealed hardwoods and laminate. The gray and white striped pad can be used for scrubbing heavily soiled floors and cleaning tougher messes.

### Removable Easy Scrubber

Quickly clean sticky messes by pressing the Easy Scrubber with your foot and locking it into position. Clean grout and crevices easily with this effective tool.



## WARNING

Do not attempt to use your PowerFresh Steam Mop without water in the tank. You may hear a knocking sound indicating there is no water.

# Operations

## Getting ready

The mop pad may have already come attached to the mop head, if not follow steps 1a and 1b below.

1. Add Fragrance Disc and attach mop pad
  - a. Insert Spring Breeze Fragrance Disc into pocket inside mop pad. Use the whole disc for a refreshing scent or cut in half for a lighter scent.
  - b. Set mop head in mop pad, making sure quick-grip release tab is located on the back.
2. Fill the water tank
  - a. Remove tank by lifting straight up and away from unit.
  - b. Unscrew cap at bottom of water tank.
  - c. Fill water tank with water. For best results, water should be at room temperature.
  - d. Replace the cap, tighten until snug.
  - e. Replace water tank by gently sliding tank into place and press down firmly.
3. Twist the Quick Release™ cord wrap clockwise to unwrap the power cord completely and plug into a 120-Volt outlet as described on the Important Safety Instructions, page 3.
4. SmartSet™ Steam Select Indicator light will glow when PowerFresh Steam Mop is ready to use. Press the Steam Level button to choose the level of steam you desire.

**NOTE: Upon first use of the PowerFresh® Steam Mop or first use after refilling the water tank, the pump may make a “knocking” sound. This is normal and should only last a few seconds.**

## Before you clean

Thoroughly sweep or vacuum floor prior to cleaning with the PowerFresh® Steam Mop.

## Cleaning hard floors

Your PowerFresh® Steam Mop is designed to clean hard flooring such as ceramic tile, vinyl, laminate, marble, stone and sealed hard wood floors. Use of your PowerFresh Steam Mop on waxed or some unwaxed floors may result in a diminished glossiness. The PowerFresh Steam Mop is not for use on unsealed wood floors. For best results test in an inconspicuous area and check the care instructions from your flooring manufacturer.

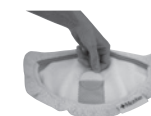
1. Plug the unit in and wait 30 seconds for it to heat up. Choose the level of steam to clean your floor: Low (delicate floors), Medium (regular cleaning), High (durable floors or sticky messes). Begin cleaning by slowly passing the unit over the floor surface.



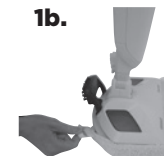
## WARNING

Never put descaling, alcoholic, or detergent products into the steam cleaner, as this may damage it or make it unsafe for use.

1a.



1b.



2a.



2b.



# Tip

» Use of distilled or demineralized water is recommended to prolong the life of your hard floor cleaner.



## WARNING

Never put descaling, alcoholic, or detergent products into the steam cleaner, as this may damage it or make it unsafe for use.



## WARNING

Tinted plates on foot may get hot while steam mop is in use. Do not touch while hot.

# Operations

2. To sanitize an area of your floor, (attack invisible germs and bacteria) place the PowerFresh Steam Mop over the spot for a minimum 15 seconds using continuous steam, but no longer than 20 seconds using continuous steam. For larger areas, overlap swivel head placement.
3. To thoroughly clean dried-on sticky spots place the scrubby pad on the steam mop. Then press and lock the Easy Scrubber brush into place and slowly move the brush over the sticky spot to remove.
4. To turn off the PowerFresh® Steam Mop, continue to press the Steam Level button until the blue light is illuminated above the Steam Level button.
5. When the PowerFresh® Steam Mop stops emitting steam, unplug the unit. Simply remove the water tank, refill, and continue steaming.

## Carpet Refresher Attachment (select models)

This accessory is recommended for the refreshing of carpets. Once the steam mop is cradled in the carpet refresher attachment, it will easily glide over the carpet.

**NOTE: Always be sure a mop pad is in place before placing in carpet refresher attachment. Only white mop pads should be used with the carpet attachment. Do not use carpet attachment on spots or stains, or glide it over the same spot for longer than 20 seconds.**

1. Place the swivel mop head, with mop pad attached, in the carpet refresher attachment.

**NOTE: The PowerFresh® Steam Mop rests in the carpet refresher attachment (select models) and may not stay attached to the swivel mop head. It is meant to glide over the carpet.**

2. Fill the water tank with water. Begin refreshing your carpet or rug by pushing the PowerFresh® Steam Mop in a forward and backward motion, releasing steam as you go.

3. When you have finished refreshing your carpet or rug, unplug the steam mop and remove from the carpet or rug.

**NOTE: Move the PowerFresh® Steam Mop and carpet refresher attachment in a continuous motion until you are finished. This product is not intended to be used as a carpet cleaner, only a carpet refresher or deodorizer. Never attempt to use the PowerFresh® Steam Mop on carpet without the carpet refresher attachment in place. DO NOT leave the mop in a stationary position.**

# Maintenance & Care

## When you're done

1. Unplug power cord from outlet.
2. Carefully remove the mop pad using the Quick Release™ tab from the mop head. The mop pad and lower assembly may be hot. Remove Spring Breeze Fragrance Disc from mop pad.
3. Any water remaining in the water tank should be emptied prior to machine storage.
4. Mop pad can be machine washed in warm water. Use only liquid detergents. Do not use fabric softeners or bleach. For best results, air dry.
5. Wrap power cord around quick release cord wrap on back of PowerFresh® Steam Mop.
6. Wipe all surfaces of PowerFresh® Steam Mop with a soft cloth. Store upright in a protected, dry area.

## WARNING

To reduce the risk of electric shock, turn power switch off and disconnect polarized plug from electrical outlet before performing maintenance or troubleshooting checks.

## CAUTION

Upright storage of the cleaner with a wet mop pad may result in the formation of white marks on your floor. To remove the white marks, clean area with vinegar.

# Troubleshooting

## WARNING

To reduce the risk of electric shock, turn power switch off and disconnect polarized plug from electrical outlet before performing maintenance or troubleshooting checks.

Problem	Possible causes	Remedies
Reduced steam or no steam	Water tank empty	Fill tank
	Steam level not selected	Select steam level by pushing steam level button

**Please do not return this product to the store.**

Other maintenance or service not included in the manual should be performed by an authorized service representative.

Thank you for selecting a BISSELL product.

**For any questions or concerns, BISSELL is happy to be of service. Contact us directly at 1-800-263-2535.**




# Replacement Parts

These items are available for your BISSELL steam mop.  
Call 1-800-263-2535 or visit [www.BISSELL.ca](http://www.BISSELL.ca)

PART #	PART NAME		PART #	PART NAME	
203-8411	Handle Assembly		203-8412	Water Tank with Cap and Insert	
203-8413	Cap and Insert Assembly		203-8410	Easy Scrubber	
203-8429	Carpet Refresher (select models)				

# Accessories

These items are available for your BISSELL steam mop.  
Call 1-800-263-2535 or visit [www.BISSELL.ca](http://www.BISSELL.ca)

PART #	PART NAME		PART #	PART NAME	
5938	PowerFresh Steam Mop Pad (2 pk) with fragrance discs (4 ct.)		1095	Spring Breeze Fragrance Discs – 8-pack	
10951	Odor Eliminating Pet Fragrance Discs – 8-pack				

# Warranty

If you need additional instruction regarding this warranty or have questions regarding what it may cover, please contact BISSELL Consumer Care by E-mail or telephone.

## Limited Two-Year Warranty

Subject to the \*EXCEPTIONS AND EXCLUSIONS identified below, upon receipt of the product BISSELL will repair or replace (with new or remanufactured components or products), at BISSELL's option, free of charge from the date of purchase by the original purchaser, for two years any defective or malfunctioning part.

See information below on "If your BISSELL product should require service".

This warranty applies to product used for personal, and not commercial or rental service. This warranty does not apply to fans or routine maintenance components such as filters, belts, or brushes. Damage or malfunction caused by negligence, abuse, neglect, unauthorized repair, or any other use not in accordance with the User's Guide is not covered.

BISSELL IS NOT LIABLE FOR INCIDENTAL OR CONSEQUENTIAL DAMAGES OF ANY NATURE ASSOCIATED WITH THE USE OF THIS PRODUCT. BISSELL'S LIABILITY WILL NOT EXCEED THE PURCHASE PRICE OF THE PRODUCT.

## \*EXCEPTIONS AND EXCLUSIONS FROM THE TERMS OF THE LIMITED WARRANTY

THIS WARRANTY IS EXCLUSIVE AND IN LIEU OF ANY OTHER WARRANTIES EITHER ORAL OR WRITTEN. ANY IMPLIED WARRANTIES WHICH MAY ARISE BY OPERATION OF LAW, INCLUDING THE IMPLIED WARRANTIES OF MERCHANTABILITY AND FITNESS FOR A PARTICULAR PURPOSE, ARE LIMITED TO THE TWO YEAR DURATION FROM THE DATE OF PURCHASE AS DESCRIBED ABOVE.

# Service

## If your BISSELL product should require service:

Visit [BISSELL.ca](http://BISSELL.ca) or contact BISSELL Consumer Care to locate a BISSELL Authorized Service Center in your area.

If you need information about repairs or replacement parts, or if you have questions about your warranty, contact BISSELL Consumer Care.

## Website or E-mail:

[www.BISSELL.ca](http://www.BISSELL.ca)

## Or Call:

BISSELL Consumer Care

1-800-263-2535

Monday – Friday 8am - 10pm ET

Saturday 9am - 8pm ET

Sunday 10am - 7pm ET

# BISSELL Consumer Care

For information about repairs or replacement parts, or questions about your warranty:

## Call:

**BISSELL Consumer Care**  
**1-800-263-2535**

Monday - Friday	8 am - 10 pm ET
Saturday	9 am - 8 pm ET
Sunday	10am - 7pm ET

## Email:

**[www.BISSELL.ca/email-us](http://www.BISSELL.ca/email-us)**

## Visit the BISSELL website: **[www.BISSELL.ca](http://www.BISSELL.ca)**

When contacting BISSELL, have model number of cleaner available.

Please record your Model Number: \_\_\_\_\_

Please record your Purchase Date: \_\_\_\_\_



©2015 BISSELL Homecare, Inc.  
BISSELL Canada Corporation  
Mississauga, Ontario L5N 0B3  
All rights reserved. Printed in China  
Part Number 160-6321 Rev 01/15  
Visit our website at: [www.BISSELL.ca](http://www.BISSELL.ca)