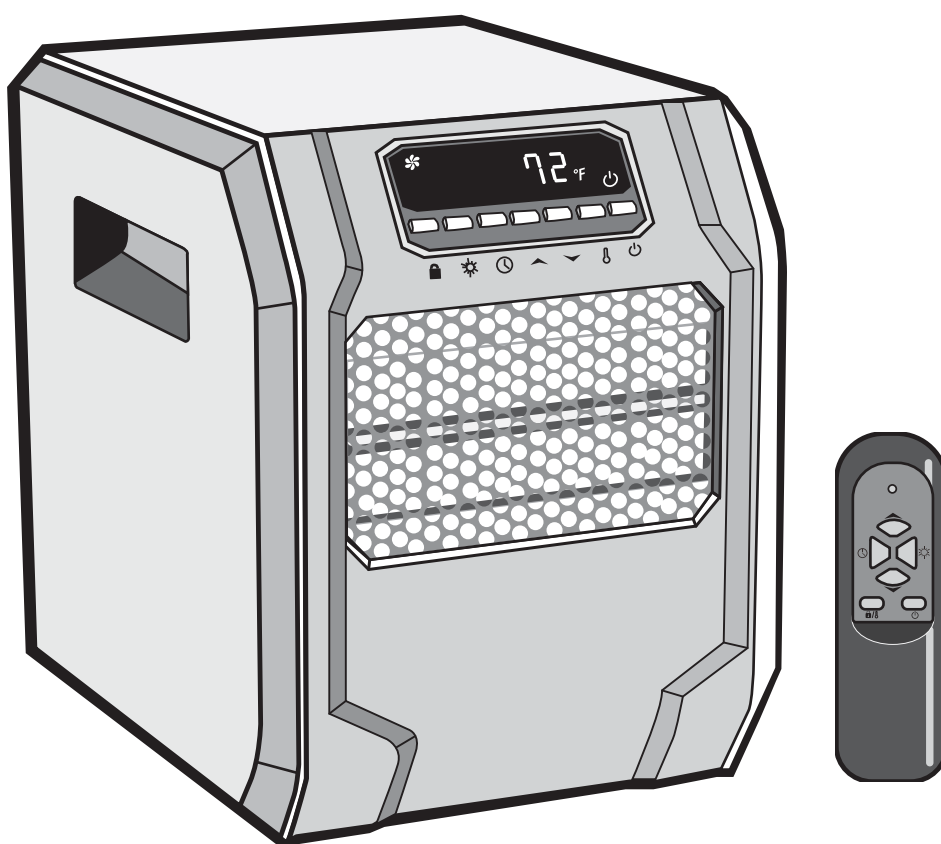




Cabinet Infrared Heater

Product No. 043-7362-4



Installation and User's Manual

IMPORTANT: Please read this manual carefully before beginning assembly of this product.

Before beginning assembly of product, make sure all parts are present.

Questions? If you have any questions or need replacement parts, please call our toll-free helpline at **1-877-483-6759**.

Keep this manual for future reference.

Table of Contents

Technical Data	2
Important Safety Instructions	3
Key Parts Diagram	5
Important Information	8
Operation	10
Cleaning and Maintenance	12
Warranty	13

Operating voltage	120 V
Operating frequency	60 Hz
Power	1500 W (high), 750 W (low), ECO
Maximum current	12.5 A



Warning! To avoid possible electric shock, unplug heater before installing, servicing, or cleaning.

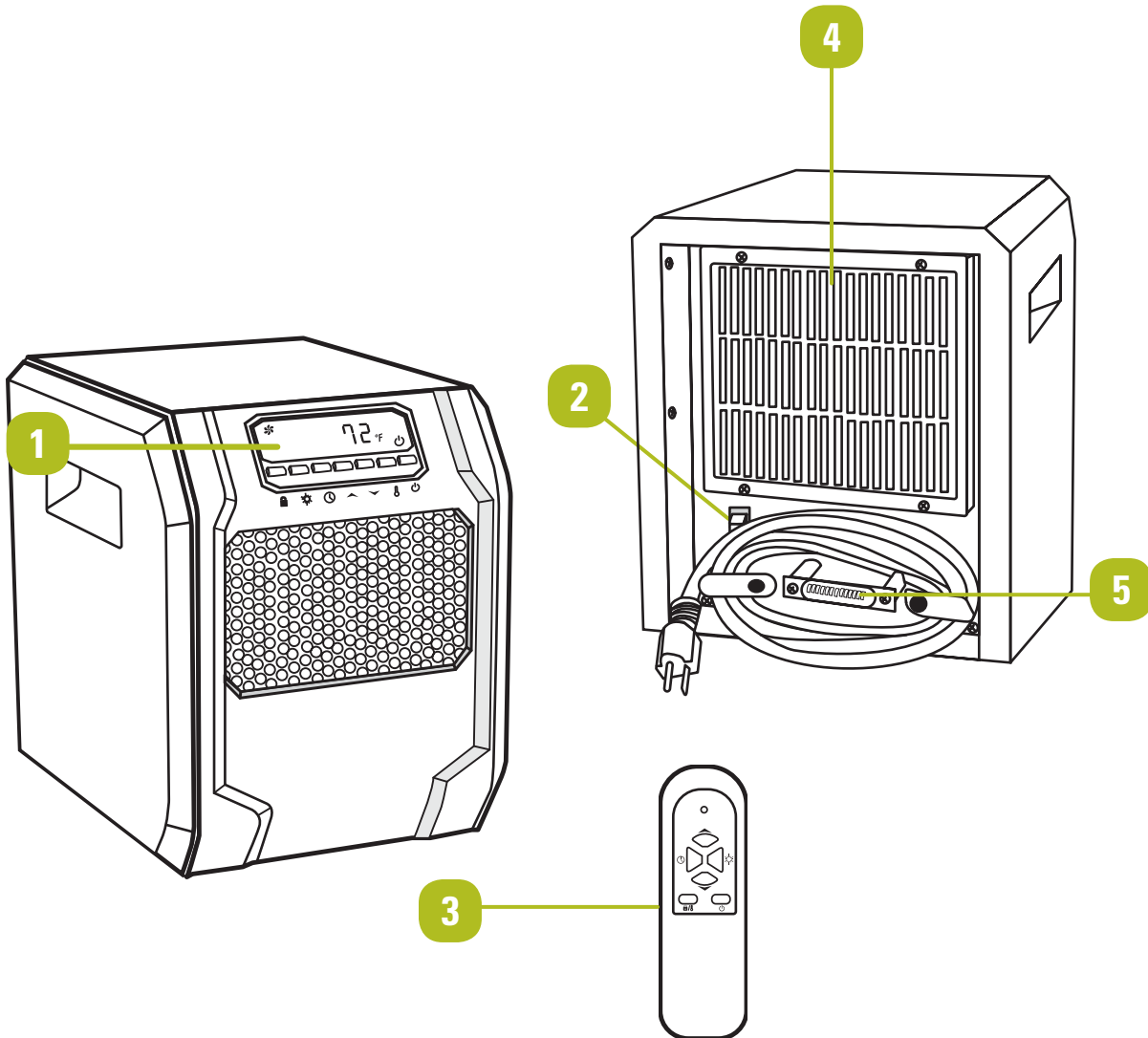


Warning! When using electrical appliances, basic precautions should always be followed to reduce the risk of fire, electric shock, and injury to persons, including the following:

- Read all the instructions carefully and use the heater only as directed in the manual. Use of the heater in other ways may cause electric shock, fire, or damage to persons or property.
- Keep combustible materials, such as furniture, pillows, bedding, papers, clothes and curtains at least 3' (0.9 m) from the front, top, side and rear portions of the heater.
- Keep children away from the work area. Do not allow children to handle the heater. Extreme supervision is necessary when using the heater near children, differently-abled or pets.
- Ensure the heater is placed on a stable, secure surface to avoid risk of tipping it over. Never place the heater in such a way that it may fall into a bathtub or into other water containers.
- DO NOT place or run the power cord under carpeting. Do not cover the cord with throw rugs or runners. Make sure that the cord is away from any obstructions so that it will not be tripped over.
- DO NOT leave the heater unattended.
- DO NOT place the heater on a small, non-level, uneven surfaces or any other surface where the heater could easily tip over.
- DO NOT insert or allow foreign objects to enter any ventilation or exhaust opening of the heater, as these may cause electric shock, fire or damage to the heater.
- DO NOT use the heater on a rug, carpet, or any other soft surface, such as a bed, where the ventilation openings may become blocked.
- DO NOT touch the heater when in use to avoid skin burns.
- DO NOT use the heater outdoors. This heater is not intended for use in any area containing still or stagnant water.
- DO NOT use this heater in areas where gasoline, paint or flammable liquids are used or stored. This heater may have hot, arcing or sparking parts inside.
- DO NOT operate the heater if there is damage in the power cord or if the heater has been dropped, damaged or has malfunctioned. Return the heater to an authorized service facility for examination, or electrical or mechanical adjustment or repair.
- DO NOT plug the heater into a worn AC outlet. Doing so may cause the power cord to become hot or distorted, resulting in overheating of the cord and could cause a fire. Always replace the worn outlets prior to further use of the heater.
- DO NOT operate the heater with its ventilation obstructed or its air intake blocked to prevent a fire hazard.
- DO NOT operate the heater with its grille or any of its safety features removed or disabled.
- DO NOT use an extension cord or any other relocatable power tap to operate the heater. Always plug the heater into a grounded wall outlet.
- DO NOT use the heater in damp environments such as flooded basements, or near sinks, washing machines, swimming pools, etc.
- DO NOT place the heater on soft surfaces like beds or pillows as the heater could tip over and ignite the materials. The heater should be placed on a smooth, non-combustible surface for smooth and trouble-free operation.
- DO NOT place the heater near a bed because objects such as pillows or blankets can fall off the bed and be ignited by the heater
- DO NOT use the heater with a broken heating element or a damaged ceramic cone.
- This heater is not intended for use in a bathroom, laundry areas and similar moist indoor locations.
- Use carry handle when moving the heater. Never pull the heater using the power cord.

IMPORTANT: RETAIN FOR FUTURE REFERENCE, AND READ CAREFULLY.

- This heater draws 12.5 A during operation. To prevent overload and blown fuses, always plug the heater into a dedicated electrical circuit. Do not plug in any other electrical appliance into the same outlet or another outlet on the same electrical circuit in which the heater is plugged in.
- Always connect the heater to properly polarized AC outlet only.
- Make sure there is no loose connection between the AC outlet and plug as this may cause overheating and distortion of the plug. Contact a qualified electrician to replace the loose or worn outlet.
- Use of this heater is not recommended for persons with reduced sensitivity to heat or an inability to react to burns. The output of this heater may vary and its temperature may become intense enough to burn exposed skin.
- When not in use, always disconnect the heater by turning the power setting control to the OFF position, then remove the power cord from the outlet.



1

Control Panel

2

Master Power Switch

3

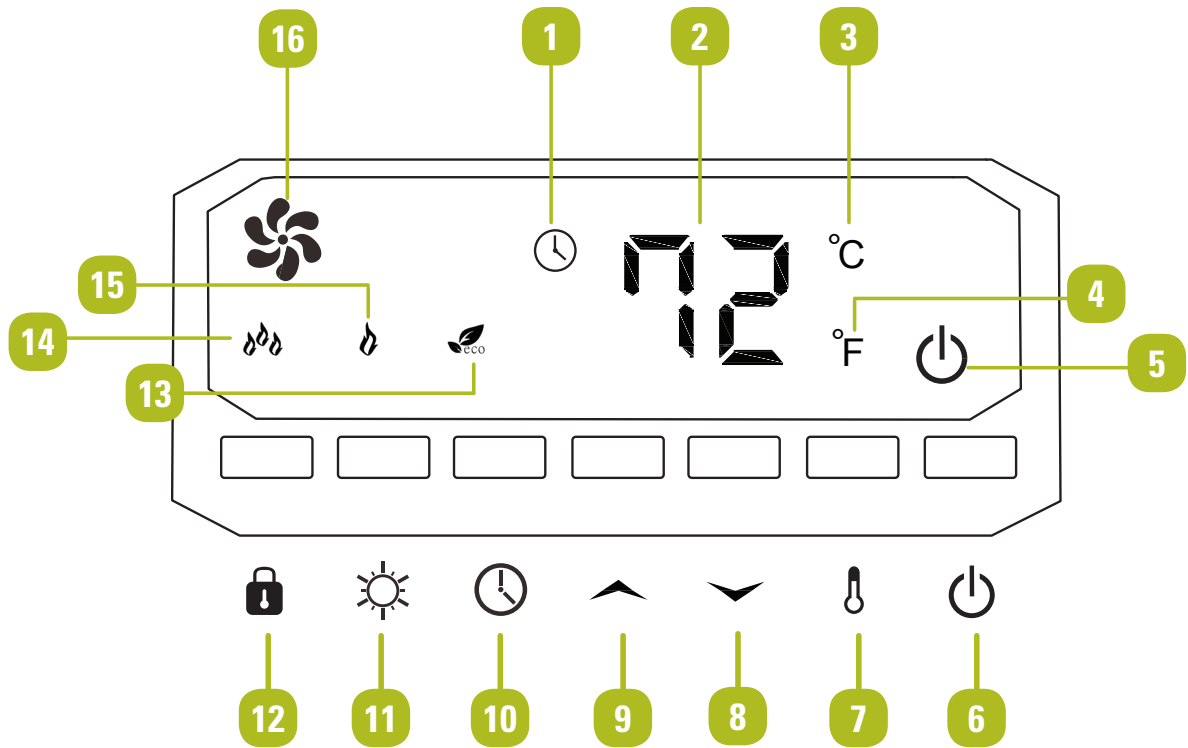
Remote Control

4

Filter Cover

5

Temperature Sensor



1

Timer Indicator Light

2

Digital Display

3

Celsius Indicator Light

4

Fahrenheit Indicator Light

5

Power Indicator Light

6

Power Switch Button

7

Ambient Temperature Button

8

Decrease Temperature Button

9

Increase Temperature Button

10

Timer Button

11

Heater Mode Button

12

Safety Lock Button

13

Eco Indicator

14

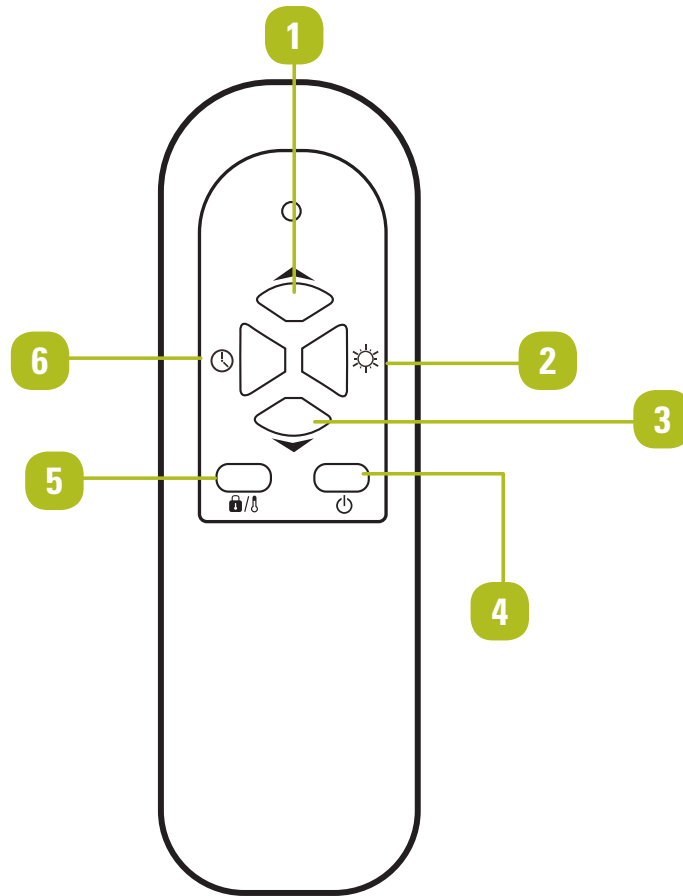
High Heat Indicator

15

Low Heat Indicator

16

Fan Indicator



1

Increase Temperature Button

4

Power Button

2

Mode Button

5

Ambient Temperature / Safety Lock Button

3

Decrease Temperature Button

6

Timer Button

1. Features

1.1. 4 High Power Quartz Infrared Emitters

1.2. Digital Thermostat for Precise Comfort

1.3. 12-Hour Timer with Auto-Shutoff

1.4. 2 Heat Settings plus ECO Mode

1.5. ECO Mode

Automatically adjusts heat output to maintain room comfort while reducing energy use.

2. Safety features

2.1. Thermal overheat protection

This feature shuts down the heater if it gets overheated due to obstructed heater grill or other abnormal conditions. If this happens, turn off and unplug the heater for 10 minutes until it cools down. Inspect and remove any objects blocking the grille and then plug it back into the outlet and resume its normal operation.

2.2. Tip-over switch

The tip-over switch is located on the bottom of the heater. This feature will automatically shut off the heater if it deviates from its original position or if the heater tips over. To resume operation, place it in an upright position.


Warning!

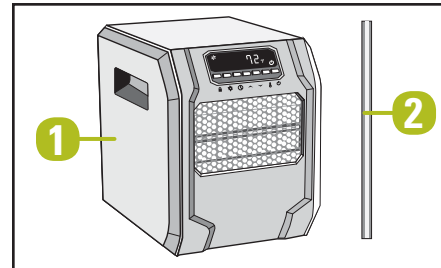
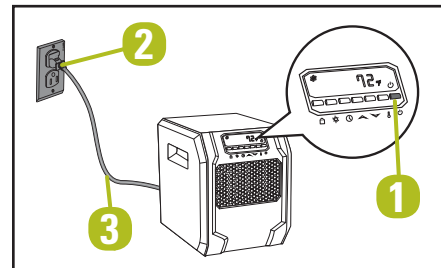
- Read each step carefully before beginning any installation and make sure you understand each step.
- Keep children and pets away during heater operation.
- Do not use the heater without the grille in place.

1. Locating the heater

- Place the heater (1) on a firm, level surface free from obstructions, and at least 3' (0.9 m) away from any wall (2) and any other combustible materials such as furniture, pillows, papers, clothes and curtains. Also place it in an upright position before turning on (fig. 1).

NOTE:

Make sure that the heater is placed in the coldest region/area of the room.

fig.1

fig.2

2. Connecting the heater to the power supply

- Make sure the power level switch (1) is in ○ (OFF) position. Connect the power cord (2) of the heater into a grounded 120 V AC, 60 Hz outlet (3) (fig. 2).


Warning!

- Make sure the plug fits tightly in the outlet. A loose connection may cause overheating and damage to the plug or heater.
- Disconnect the heater from the power supply when the heater is not in use.

NOTE:

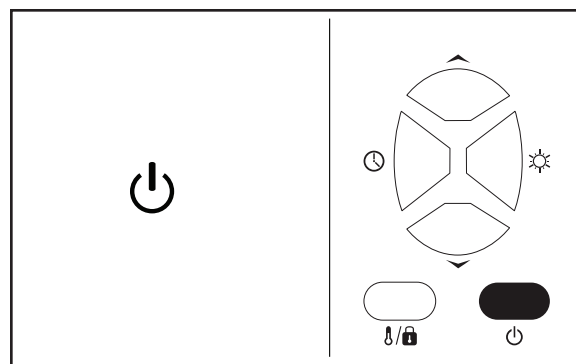
The heater may emit a foul odour or smoke during its initial use, owing to the “burning off” of the heating element lubricant. This is normal and will go away after a few minutes of use.

NOTE:

It is recommended to not use the heater around birds and pets until the manufacturing corrosion coating burns off as those creatures tend to be sensitive to the fumes.

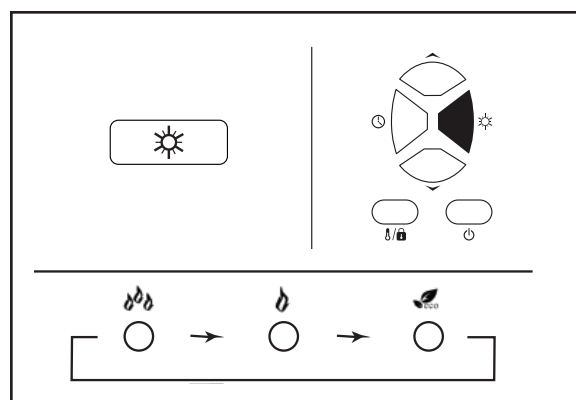
1. Turning on the heater

- Press the Power button on the control panel or press the Power button on the remote control. When turning off the power, the heating elements will stop working first. The fan will continue working for up to 90 seconds to dispense residual heat inside the heater. This is a normal function.



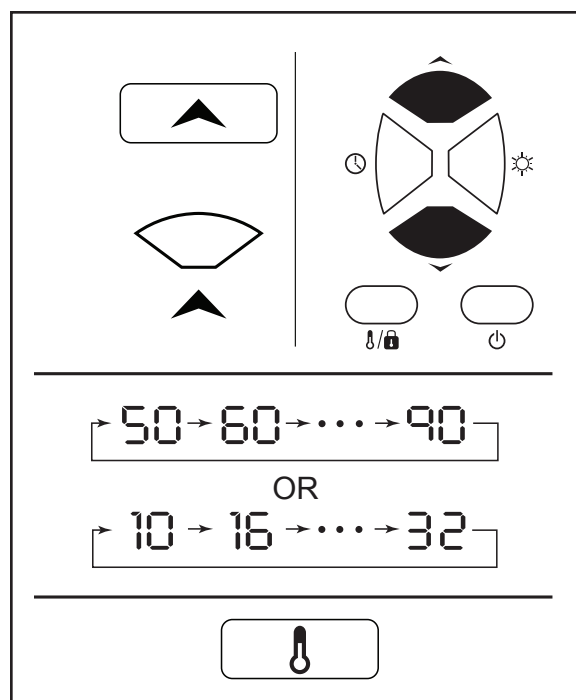
2. Heat settings

- Select a heat setting by pressing the HEATER MODE BUTTON on either the control panel or the remote control to toggle between the three heat settings. High-heat mode uses 1,500 W; low-heat mode is 750 W. ECO mode is an Economic Energy Saving Function. When ECO mode is chosen, the heater will operate to maintain a constant warm 68°F / 20°C.



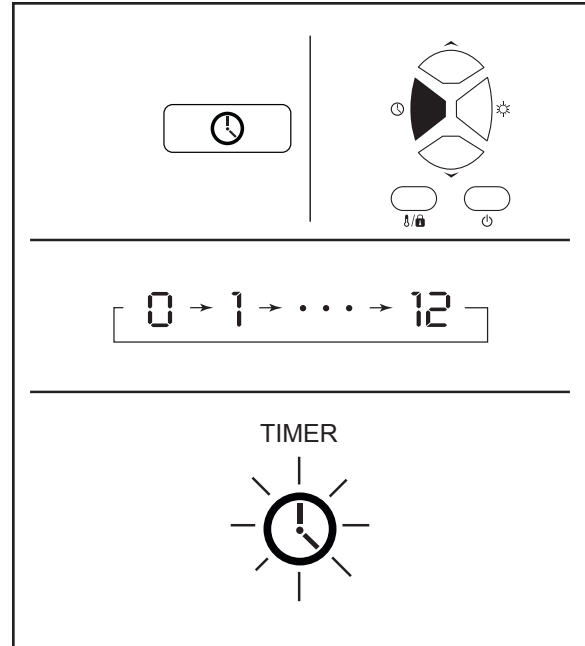
3. To set the temperature

- Press the arrows on the control panel or the remote control. You can set the temperature on the heater anywhere between 50°F and 90°F or between 10°C and 32°C. Once you have chosen the desired temperature, the heater will remain on until the room temperature increases to the temperature on the digital display. The heater will cycle on and off to maintain the desired room temperature. To view the ambient temperature press the ambient temperature button on the control panel.
- NOTE:** Press and hold the ambient temperature button on the control panel for 5 seconds to switch the digital display indicator on the heater between Fahrenheit and Celsius. On the remote, short press the ambient temperature button to engage Ambient Temperature, long press for 3 seconds to engage Child Lock.



1. To set timer to power OFF

- Start the unit and press the Timer button on the control panel or remote control. The timer indicator light turns on when the timer is set.

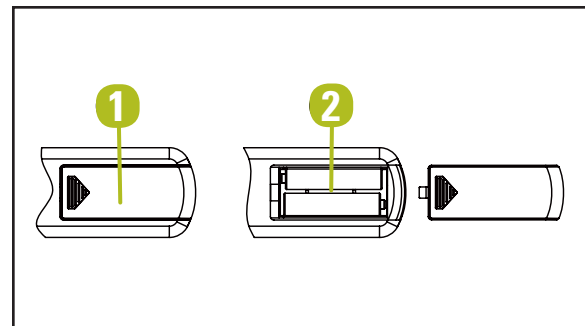


2. To set timer to power ON

- While powering off the unit press the Timer button on the control panel. The Timer indicator light turns on when the timer is set.

3. To replace the batteries

- Remove the battery cover (1) from the remote by applying pressure to the battery cover (1) and sliding it away from the remote. Insert two AAA batteries (not included) (2) and close the remote by placing the battery cover (1) back on the remote.



NOTE:

The timer-power-off function can only be set when the heater is in power-on mode. The digital display on the control panel changes from the set temperature readout to a time value for the timer. Press the Timer button repeatedly to change the number value between a range of 0 to 12 hours (in 1-hour intervals).

NOTE:

The timer-power-on function can only be set when the heater is in power-off mode. The digital display on the control panel will indicate time value for the timer. Press the Timer button repeatedly to change the number value between a range of 0 to 12 hours (in 1-hour intervals).

NOTE:

Do not mix old and new batteries. Do not mix alkaline, standard (carbon-zinc), or rechargeable (NiCad, Ni-MH, etc) batteries.



Warning!

- Before cleaning the heater, always turn off the power switch and unplug the heater.
- Do not use the heater without the grille in place.

It is recommended to clean the heater at least once a month and also before off-season storage.

- After use, always turn off the heater and unplug the unit from the power outlet and allow the heater to cool.
- Turn off the power switch in the rear of the unit.
- Unplug the unit and let it cool completely.
- To keep the heater clean, the outer shell may be cleaned with a soft, damp cloth. You may use a mild detergent if necessary. After cleaning, dry the unit with a soft cloth. **CAUTION: DO NOT** let liquid enter the heater.
- **DO NOT** use alcohol, gasoline, abrasive powders, furniture polish, or rough brushes to clean the heater. This may cause damage or deterioration to the surface of the heater.
- **DO NOT** immerse the heater in water.
- Wait until the unit is completely dry before use.

Storage

Store the heater in a cool, dry location when not in use. To prevent dust and dirt build-up, use the original packaging to repack the unit.

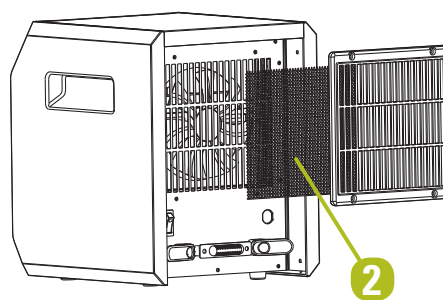
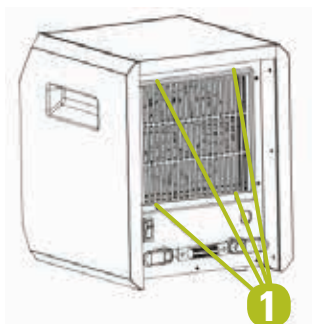
Troubleshooting

If the heater or power supply unit will not operate, check the following before seeking repair or service:

1. Check if the power cord is plugged into an electrical outlet. If not, plug in.
2. Check if electricity to the main fuse is working.
3. Be sure master power switch on the rear of the unit is on.
4. Check if the battery in remote control is not dead and if the insulating film is pulled out.

CLEANING THE AIR FILTER

1. Clean the air filter (2) after three months or if it appears to be blocking airflow. With the heater unplugged, remove the four filter screws (1) as illustrated below. Clean all parts of the filter assembly and allow parts to completely dry.
2. Reassemble and reinstall the filter (2).
3. Please do not attempt to open or repair the heater by yourself. Doing so may void the warranty and could cause damage or personal injury.



This product is guaranteed for 12 months from the date of original retail purchase against defects in materials and workmanship.

Subject to the conditions and limitations described below, this product, if returned to us with proof of purchase within the stated warranty period and if covered under this warranty, will be repaired or replaced (with the same model, or one of equal value or specification), at our option. We will bear the cost of any repair or replacement and any costs of labour relating thereto.

This warranty is subject to the following conditions and limitations:

- a bill of sale verifying the purchase and purchase date must be provided;
- this warranty will not apply to any product or part thereof which is worn or broken or which has become inoperative due to abuse, misuse, accidental damage, neglect, or lack of proper installation, operation, or maintenance (as outlined in the applicable owner's manual or operating instructions) or which is being used for industrial, professional, commercial, or rental purposes;
- this warranty will not apply to normal wear and tear or to expendable parts or accessories that may be supplied with the product which are expected to become inoperative or unusable after a reasonable period of use, including but not limited to finish, glass coverings, and remote controls;
- this warranty will not apply to routine maintenance;
- this warranty will not apply where damage is caused by repairs made or attempted by others (i.e., persons not authorized by the manufacturer);
- this warranty will not apply to any product that was sold to the original purchaser as a reconditioned or refurbished product (unless otherwise specified in writing);
- this warranty will not apply to any product or part thereof if any part from another manufacturer is installed therein or any repairs or alternations have been made or attempted by unauthorized persons;
- this warranty will not apply to normal deterioration of the exterior finish, such as, but not limited to scratches, dents, paint chips, or to any corrosion or discolouring by heat, abrasive and chemical cleaners; and
- this warranty will not apply to any component part sold by and identified as the product of another company, which shall be covered under the product manufacturer's warranty, if applicable.

Additional Limitations

This warranty applies only to the original purchaser and may not be transferred. Neither the retailer nor the manufacturer shall be liable for any expense, loss, or damage, including, without limitation, any indirect, incidental, consequential, or exemplary damages arising in connection with the sale, use, or inability to use this product.

Notice to Consumer

This warranty gives you specific legal rights, and you may have other rights, which may vary from province to province. The provisions contained in this warranty are not intended to limit, modify, take away from, disclaim or exclude any statutory warranties set forth in any applicable provincial or federal legislation.

Imported by

Trileaf Distribution Trifeuil Toronto, Canada M4S 2B8

For any help, please contact the customer service at:

1-877-483-6759

(Monday-Friday 8:00-7:00pm EST, Saturday 9:00-7:00pm EST)