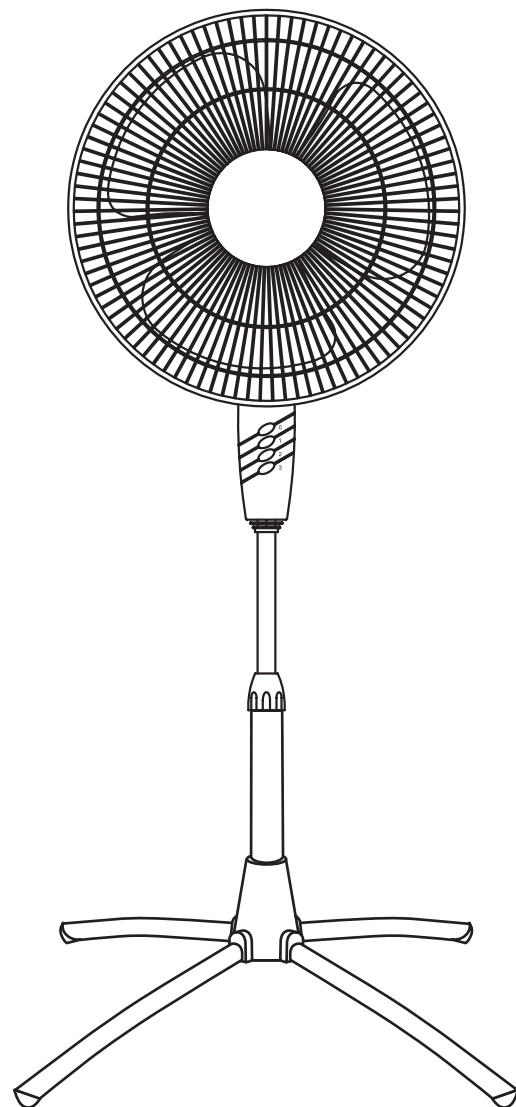




# 18" (45.7 CM) Oscillating Pedestal Fan with Folding Base

Product No. 043-5700-2



## Installation and User Manual

**IMPORTANT:** Please read this manual carefully before beginning assembly of this product.

Before beginning assembly of product, make sure all parts are present.

Questions? If you have any questions or need replacement parts, please call our toll-free helpline at **1-866-788-7389**.

Keep this manual for future reference.

**Table of Contents**

Technical Data	2
Important Safety Instructions	3
Fan Assembly	5
Important Information	7
Operation	7
Care and Maintenance	8
Warranty	9

Operating voltage	120 V
Operating frequency	60 Hz
Power	65 W
Maximum current	0.5 A


**Warning!**

- To avoid possible electric shock, switch off the power supply at the main fuse or circuit breaker box before installing, servicing, or cleaning.


**Warning!**

- When using electrical appliances, basic precautions should always be followed to reduce the risk of fire, electric shock, and injury to persons, including the following:

- **READ ALL THE INSTRUCTIONS BEFORE USING THIS FAN.**
- Use this fan only as described in this manual. Any other use not recommended by the manufacturer may cause electric shock, fire or injury to persons.
- Do not operate the fan with a damaged power cord or after the fan malfunctions or has been dropped in any manner.
- Use of extreme caution is necessary when any fan is used by or near children, disabled persons or pets and whenever the fan is left operating unattended.
- Do not place the fan on a small, unlevel, uneven surface or any surface which might allow fan to tip or fall.
- For proper operation, fan should be placed on a smooth, non-combustible, level surface.
- Always unplug fan when not in use, when moving from place to place, when assembling or disassembling parts, and before cleaning.
- The use of attachment not recommended or sold by the manufacturer may cause hazards.
- Do not use outdoors.
- Do not use fan in window. Rain may cause electrical hazard (for non-window models).
- Do not operate the fan with blade guards or any safety device removed.
- Do not insert or allow any object to enter any openings on the fan. Doing so may cause electric shock and/or fire hazard. Avoid contact with moving parts.
- This appliance is not intended for use by persons (including children) with reduced physical, sensory or mental capabilities or lack of experience and knowledge, unless they have been given supervision or instruction concerning use of the appliance by a person responsible for their safety.
- Children should be supervised to ensure they do not play with the appliance.


**Warning! HOT SURFACES**

- Do not touch fan motor when in use. This motor is hot when in use.
- To avoid burns, do not let bare skin touch hot surfaces.


**Warning! FIRE HAZARD**

- Fans have arcing or sparking parts inside.

- Do not use near combustible materials or flammable gases or sources of heat.
- DO NOT USE in areas where gasoline, paint or flammable materials are used or stored. To prevent a possible fire, do not block air intakes or exhaust in any manner.
- Do not insert or allow foreign objects to enter any ventilation or exhaust opening as this may cause an electric shock, fire, or damage the fan.

**IMPORTANT: RETAIN FOR FUTURE REFERENCE, AND READ CAREFULLY**

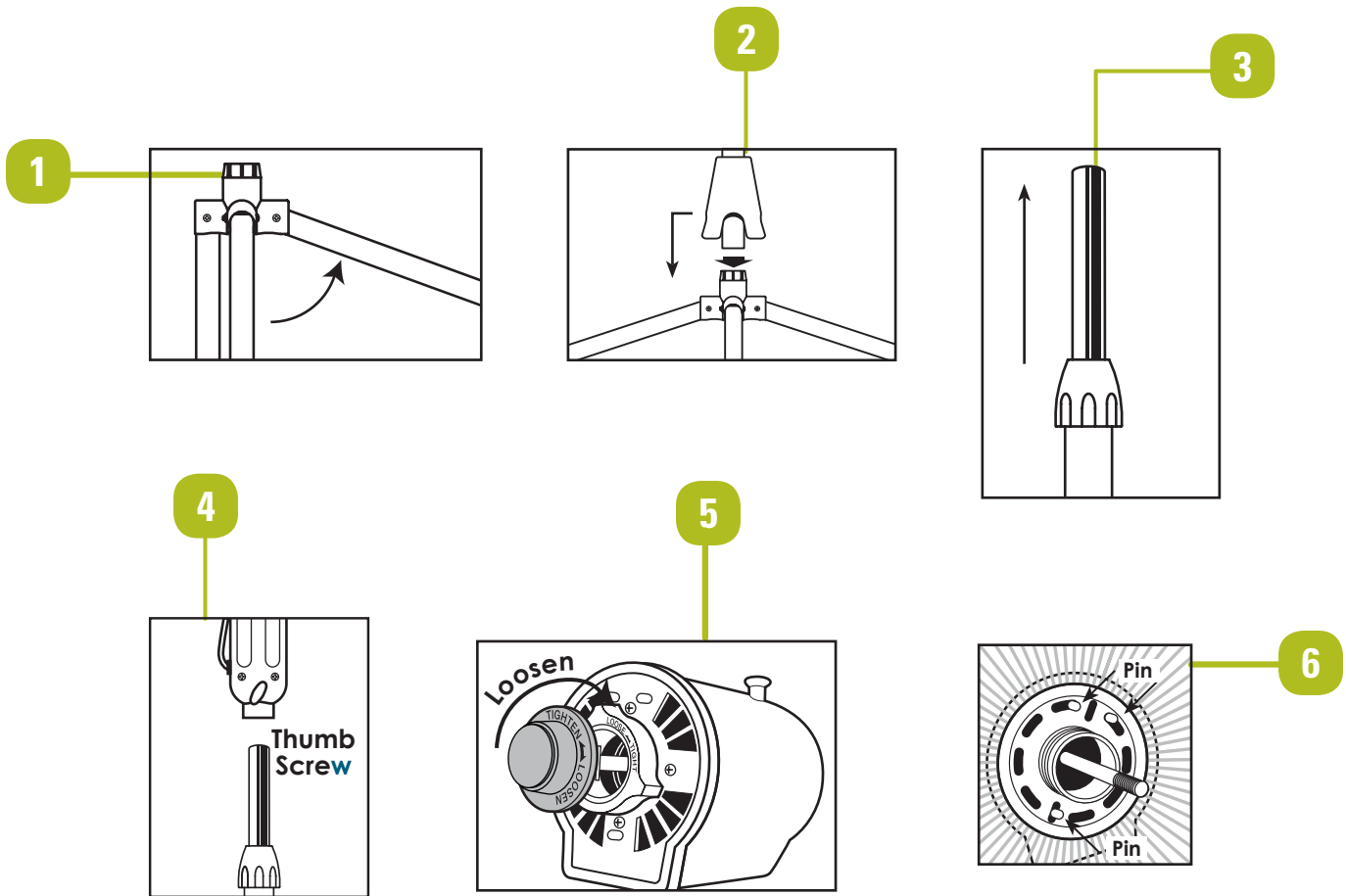
**Warning! SHOCK HAZARD**

- Use your fan only in dry environments.
- Do not use with damaged cord or plug. Use with adequate electrical system that is up to code.
- Unplug the fan when not in use.

- This fan is NOT intended for use in a bathroom, laundry area, or similar locations, or near sinks, washing machines, swimming pools or other sources of water.
- Never locate fan where it may fall into a bathtub or other water receptacle.
- Do not use in damp environments such as flooded basements.
- To Prevent Electric Shock, this product has a polarized two prong plug (one blade is wider than the other) that must be fully inserted in to a matching properly-grounded outlet.
- This plug is designed to fit a polarized outlet only one way. If the plug does not fit fully into the outlet, reverse the plug. If the plug still does not fit, contact a qualified electrician. Do not attempt to defeat this safety feature.
- To Reduce the Risk of Fire or Electric Shock, do not use this product with any solid-state speed control device.
- DO NOT operate any fan with a damaged cord or plug or after fan malfunctions, has been dropped or damaged in any manner.
- Do not operate fan with a broken blade, safety cage or any visual imperfections.
- Disconnect power before servicing. For repairs covered under warranty, see warranty statement.
- DO NOT run power cord under carpeting.
- DO NOT cover cord with throw rugs, runners or the like.
- Arrange cord away from traffic area where it will not be tripped over.
- Avoid the use of extension cords due to risk of fire. If an extension cord must be used, the cord must be minimum 14 AWG and rated not less than 1875 watts. Do not use an extension cord unless the plug can be completely inserted into its receptacle.
- Do not operate fan with its ventilation obstructed.

**IMPORTANT: RETAIN FOR FUTURE REFERENCE, AND READ CAREFULLY**

Simple assembly is required to use this fan.


**1**

Unfold base legs

**2**

Place decorative Plastic Flange over Extension Pole to cover the base. Slide pedestal pole into base receptacle. Tighten nut to secure in place. Slide flange over base connection.

**3**

With collar nut loosened, pull Chrome Extension out of Fan Pedestal

**4**

Assemble fan Control Panel/Motor assembly onto Chrome Extension and tighten thumbscrew.

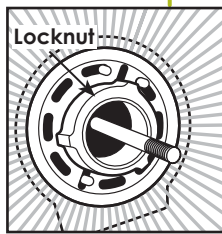
**5**

Remove the Blade Cap by twisting it **CLOCKWISE** while holding the metal shaft tightly. Note: Threads are reversed. Unscrew = Clockwise.

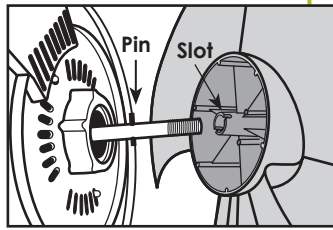
**6**

Assemble Rear Grille onto Motor Housing. Rear Grille should fit into pins on fan motor housing as shown.

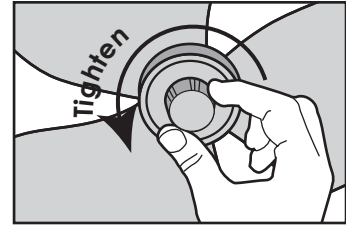
7



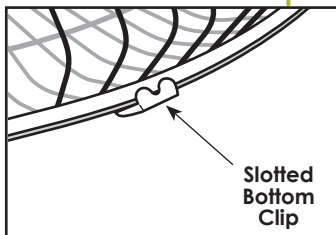
8



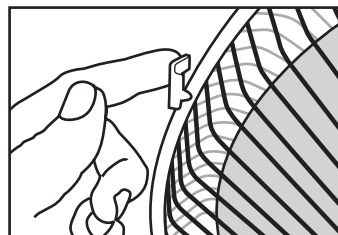
9



10



11



Press remaining Grille Clips onto Front Grille to securely attach Front Grille. Do not operate fan without Grille in place.

7

Thread Locknut onto Motor Housing to lock Rear Grille in place.

8

Remove any protective covering over shaft before Fan Blade Installation. Place Fan Blade onto Motor Shaft. Notice the pin on Motor Shaft should fit into slots of Fan Blade.

9

Thread Blade Cap onto threaded end of Motor Shaft.

**Note: Threads are reversed.**  
**Tighten = Counter-clockwise.**

10

With logo upright, attach Front Grille to Rear Grille. Start by inserting Front Grille on to Slotted Bottom Clip.

11

Press remaining Grille Clips onto Front Grille to securely attach Front Grille. Do not operate fan without Grille in place.

## 1. Features

- 3 Speeds
- Large blades provide superior air flow
- Wide Oscillation
- Adjustable tilt & Height
- Perfect for Home or Office

## 1. Fan Operation

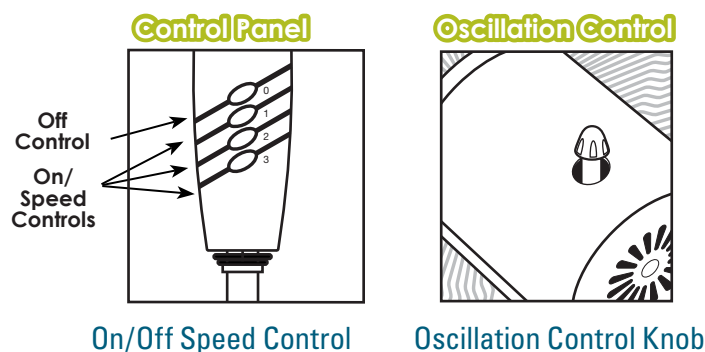
- Always operate the fan in the upright position following all instructions and recommendations listed in this manual.

## 2. Fan Location

- Place the fan in the area of the room that will provide proper fan cooling.

## 3. Fan Connection

- Plug fan directly into 120 V AC, 60 Hz wall outlet. Be sure plug fits tightly in outlet. A loose connection may cause overheating and damage to the plug or fan.
- **NOTE:** To prevent overloading a circuit, do not plug the fan into a circuit that is servicing other electrical needs.



## 4. Turning Fan ON/OFF

- Clip or place fan on stable surface. Plug fan into outlet. To start the fan, slide power switch to desired speed button: OFF, LOW, HIGH.

## 5. Oscillation

- To start fan oscillation, press Oscillation Control Knob (located above motor housing) down. To stop oscillation function pull Oscillation Control Knob up while the fan is in any oscillation position.

**Warning!**

- Before cleaning the fan, be sure to disconnect power cord from the plug.
- Do not use the fan without the grille in place.

Periodic grille cleaning with a vacuum will prevent dust build-up.

- Clean the grille surface with a clean, damp cloth. Do not use harsh chemical or abrasive cleaners.
- DO NOT IMMERSE THE FAN OR ANY WIRES IN WATER.
- Replace front grille before fan use. Allow fan to dry completely before use.
- The motor is sealed and does not require any interior maintenance, cleaning or lubrication.

**Maintenance**

The internal motor bearings are permanently lubricated at the factory and do not require any additional lubrication.

**Repair**

DO NOT OPERATE THE FAN WITHOUT THE GRILLE IN PLACE. DO NOT USE THE FAN IF IT HAS MALFUNCTIONED OR BECOME DAMAGED IN ANY WAY.

**Storage**

Keep original carton for storage of the fan. Coil and tie the power cord to avoid damage during storage.

**Warning!**

- Please do not attempt to open or repair the fan by yourself. Doing so may void the warranty and could cause damage or personal injury.



This product is guaranteed for 12 months from the date of original retail purchase against defects in materials and workmanship.

Subject to the conditions and limitations described below, this product, if returned to us with proof of purchase within the stated warranty period and if covered under this warranty, will be repaired or replaced (with the same model, or one of equal value or specification), at our option. We will bear the cost of any repair or replacement and any costs of labour relating thereto.

### **This warranty is subject to the following conditions and limitations:**

- a bill of sale verifying the purchase and purchase date must be provided;
- this warranty will not apply to any product or part thereof which is worn or broken or which has become inoperative due to abuse, misuse, accidental damage, neglect, or lack of proper installation, operation, or maintenance (as outlined in the applicable owner's manual or operating instructions) or which is being used for industrial, professional, commercial, or rental purposes;
- this warranty will not apply to normal wear and tear or to expendable parts or accessories that may be supplied with the product which are expected to become inoperative or unusable after a reasonable period of use, including but not limited to finish, glass coverings, and remote controls;
- this warranty will not apply to routine maintenance;
- this warranty will not apply where damage is caused by repairs made or attempted by others (i.e., persons not authorized by the manufacturer);
- this warranty will not apply to any product that was sold to the original purchaser as a reconditioned or refurbished product (unless otherwise specified in writing);
- this warranty will not apply to any product or part thereof if any part from another manufacturer is installed therein or any repairs or alternations have been made or attempted by unauthorized persons;
- this warranty will not apply to normal deterioration of the exterior finish, such as, but not limited to scratches, dents, paint chips, or to any corrosion or discolouring by heat, abrasive and chemical cleaners; and
- this warranty will not apply to any component part sold by and identified as the product of another company, which shall be covered under the product manufacturer's warranty, if applicable.

### **Additional Limitations**

This warranty applies only to the original purchaser and may not be transferred. Neither the retailer nor the manufacturer shall be liable for any expense, loss, or damage, including, without limitation, any indirect, incidental, consequential, or exemplary damages arising in connection with the sale, use, or inability to use this product.

### **Notice to Consumer**

This warranty gives you specific legal rights, and you may have other rights, which may vary from province to province. The provisions contained in this warranty are not intended to limit, modify, take away from, disclaim or exclude any statutory warranties set forth in any applicable provincial or federal legislation.

### **Imported by**

Trileaf Distribution Trifeuil Toronto, Canada M4S 2B8

For any help, please contact the customer service at:

1-866-788-7389

(Monday-Friday 8:00-7:00pm EST, Saturday 9:00-7:00pm EST)