



IMPORTANT SAFEGUARDS

When using electrical appliances, basic safety precautions should always be followed, including the following:

1. READ ALL INSTRUCTIONS

- For household use only.
- Do not fill water reservoir above max fill line or use distilled water.
- Scalding may occur if the handle or drawer is opened during the brewing process.
- Do not touch hot surfaces. Use handles or knobs.
- To protect against fire, electric shock, and injury to persons do not immerse appliance, cord, or plugs in water or other liquid.
- Close supervision is necessary when any appliance is used by or near children 12 years or younger.
- Unplug from outlet when not in use and before cleaning. Allow to cool before putting on or taking off parts, and before cleaning the appliance.
- Do not operate any appliance with a damaged cord or plug or after the appliance malfunctions, or has been damaged in any manner. Contact a Keurig authorized distributor for examination, repair, or adjustment if applicable, or contact Keurig customer service.
- The use of accessory attachments not authorized by the appliance manufacturer may result in fire, electric shock, or injury to persons.
- Do not use outdoors.

- Do not let cord hang over edge of table or counter, or touch hot surfaces.
- Do not place on or near a hot gas or electric burner, or in a heated oven.
- Always attach plug to appliance first (if not permanently attached), then plug cord into the wall outlet. To disconnect, turn any control to "off" (if applicable) then remove plug from wall outlet.
- Do not use appliance for other than intended use.
- Use coffee maker in upright position only. Allow coffee maker to cool (90 min) prior to turning it in any position other than upright.
- The glass carafe is designed for use with this appliance. It must never be used on a range top.
- Do not set a hot carafe on a wet or cold surface.
- Do not use a cracked carafe or a carafe having a loose or weakened handle.
- Do not clean carafe with abrasive cleansers, steel wool, or other abrasive material.
- Only use K-Cup® pods intended for this appliance. If the pod does not fit, do not force it into the appliance.

SAVE THESE INSTRUCTIONS

For detailed coffee maker cleaning and maintenance instructions, videos, and the full Use & Care Guide visit keurig.ca.



- WARNING:** Keep all plastic bags away from children.
- WARNING:** Always make sure the carafe is positioned properly to accept the dispensed hot liquid. Overflow can lead to scalding hazards.
- WARNING:** Used K-Cup® pods should be removed from the pod holder, and areas holding coffee grounds should be rinsed clean after brewing, or in part with the daily cleaning routine.
- WARNING:** Do not open filter basket drawer while brewing is in progress.
- WARNING:** Snap lid securely onto carafe before serving any beverages.
- WARNING:** Scalding may occur if the carafe lid is removed during brew cycle.
- CAUTION:** Keurig® recommends using only Keurig® My K-Cup® Reusable Coffee Filters and Keurig® K-Cup® pods in this appliance. **Do not remove foil lid.** The use of non-Keurig® pods or accessories may cause coffee maker malfunction or injury.
- CAUTION:** There are sharp needles that puncture the K-Cup® pod; one above the K-Cup® pod holder and the other in the bottom of the K-Cup® pod holder. To avoid risk of injury, be aware of the needle locations.
- CAUTION:** There is extremely hot water under pressure in the K-Cup® pod holder during the brew process. To avoid risk of injury do not lift the handle or otherwise open the handle during the brew process.

10. POWER CORD INSTRUCTIONS:

a. A short power-supply cord is provided to reduce risks resulting from becoming entangled in or tripping over a longer cord.

b. Longer detachable power-supply cords or extension cords are available and may be used if care is exercised in their use.

c. If a long detachable power-supply cord or extension cord is used:

i. The marked electrical rating of the detachable power-supply cord or extension cord should be at least as great as the electrical rating of the appliance.

ii. If the appliance is of the grounded type, the extension cord should be a grounding type 3-wire cord.

iii. The longer cord should be arranged so that it will not drape over the counter top or table top where it can be pulled on by children or tripped over.

CAUTION: HOT COCOA/OTHER NON-COFFEE PODS: Immediately after using a hot cocoa/other non-coffee pod, run a hot water brew cycle without a pod to avoid the possibility of clogging the exit needle.

DO NOT assume the next user will do this.



WARNING

RISK OF FIRE OR ELECTRIC SHOCK DO NOT OPEN



WARNING, TO REDUCE THE RISK OF FIRE OR ELECTRIC SHOCK, DO NOT REMOVE COVER (OR BACK), NO USER SERVICEABLE PARTS INSIDE

Button Overview

PROGRAMMABLE AUTO BREW

For carafe brewing

BREW SIZES

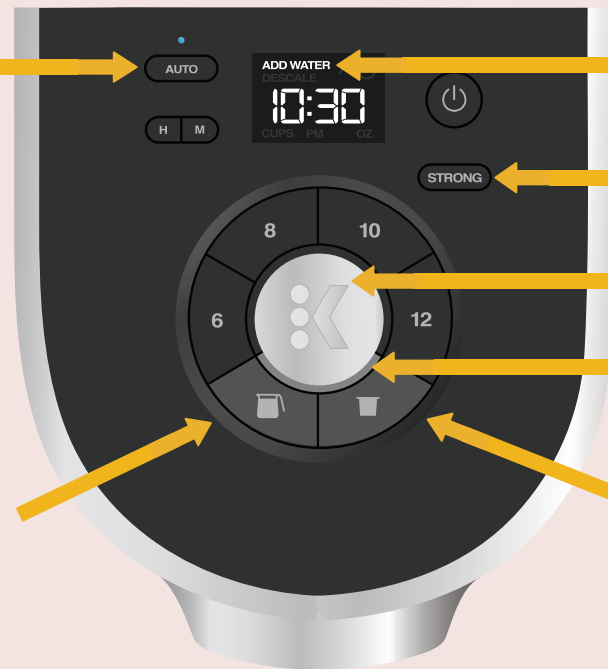
for both single cup and carafe

Choose **POD** (ounces) & **6** (177 ml), **8** (237 ml), **10** (296 ml) or **12** (355 ml) for a single cup

Choose **CARAFE** (cups) & **6**, **8**, **10**, or **12** for a carafe

CARAFE

Use ground coffee



ADD WATER

Will illuminate when water is needed

STRONG BREW

For single-cup brewing

BREW BUTTON

Starts the brew process

BREW INDICATOR LIGHT

POD

Use K-Cup® pods

Before You Brew



1 Plug & Place

Remove packing tape from coffee maker and plug into an outlet.

Single Cup - Place a large mug (355 ml/12 oz minimum) on the drip tray.

Carafe - Rinse the carafe and place it on the heating plate.

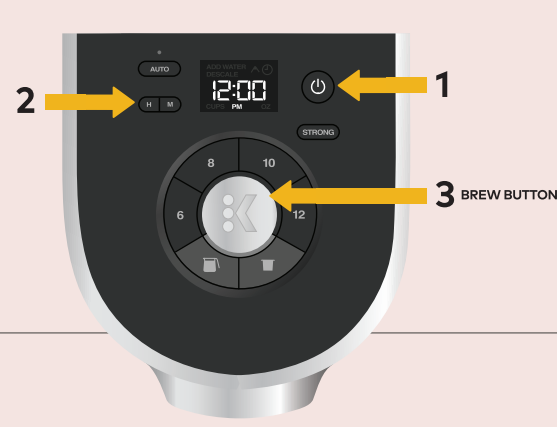
2 Rinse & Fill

Remove the water reservoir lid, then lift the reservoir straight up to remove it.

If you have a Keurig® Water Filter, install it now. Refer to your Water Filter Starter Kit for instructions.

Fill the reservoir with fresh water to the **MAX** fill line.

Replace water reservoir, making sure the lock tabs engage with the coffee maker.



3 Power On & Set Clock

Press the **POWER** button. Use the **H/M** buttons to set the clock, then press the blinking **BREW** button to confirm the time.

NOTE: The clock must be set in order to use the Auto Brew functionality.

4 Cleansing Brew - Single Cup

Press the **POD** button - the 4 brew size buttons will blink. **Do not insert a K-Cup® pod.** Press the **8** button - the brew indicator light will blink. Press the **BREW** button to start the cleansing brew.

The cleansing brew will begin once the coffee maker is heated. The initial heating process will take about 4 minutes. The brew indicator light will pulse while the coffee maker is heating and will turn solid when ready. The brew is complete when the brew indicator light is no longer illuminated. Pour the hot water into the sink.

NOTE: Between brew cycles, the coffee maker may take about a minute to reheat.

SCHAWKI!

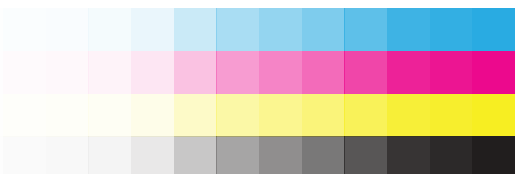
1620 Tech Avenue, Mississauga, ON
L4W 5P4 Canada (905) 219-1600

Please check carefully before using. Although every effort is made to produce the finest possible product, errors do occur. We do not assume any liability beyond the replacement of our product.

Client Name: Keurig Green Mountain
Sales Order: 104068346
Service Order: 401961097
Date: 07/31/2020
Description: K Duo QSG CDN REV D (Eng) QSG

KGM Job #: 8005
Item Part #: DC0000003283 REV D
Buyer: Mona Gandhi
Vendor:
Designer:
CC:
Operator: SB
Project:

Barcode:
Mag:
Bar Width Adj.:
Dieline #:
Line Screen: 150
Print Method: Digital Printing
Printer: GUANGDONG GAOYI PACKING AND PRINTING - DONGGUAN
Printer PO #:
Special Print Processes:



Cyan
Magenta
Yellow
Black

KGM Approval:	Designer Approval:	Buyer Approval:	Proofreader Approval:	Changes:
Date	Date	Date	Date	Date



5 Cleansing Brew - Carafe

Do not fill the filter basket with coffee grounds. Press the **CARAFE** button - the 4 brew size buttons will blink, press the **8** button. The brew indicator light will blink. Press the **BREW** button to start the cleansing brew.

*After the brew, remove and discard the used K-Cup or coffee grounds from the drawer (rinse clean as needed).



HEATING PLATE ON

The **CARAFE** button will illuminate red to indicate the heating plate is on when the cleansing brew is complete. Press and hold the **CARAFE** button to turn the heating plate off, and pour the hot water into the sink.

The one-time carafe setup process is now complete and you are ready to brew!



1 Place Mug & Pod

Place a mug on the drip tray. If using a travel mug, remove the drip tray and place the mug on the drip tray base. Lift the handle and place a K-Cup®pod in the K-Cup®pod holder. Lower the handle completely to close the lid.

High Altitude Brewing: While holding the coffee maker handle up, push down slowly on the K-Cup®pod in the pod holder until the bottom of the K-Cup®pod is punctured by the exit needle.



2 Brew & Enjoy!

Press the **POWER** button. The **POD** and **CARAFE** buttons will blink. Select **POD**, then select your brew size. Press the **BREW** button to initiate brewing. For a bolder coffee, press the **STRONG** button before pressing the **BREW** button.

Brewing is complete when the brew indicator light is no longer illuminated.

NOTE: After 5 minutes, the coffee maker will go into Auto Off mode. To reactivate, press the **POWER** button.



1 Place Carafe & Fill Basket

Fill the water reservoir to the **MAX** fill line. Lift the filter basket cover up and insert a 12 cup paper filter into the filter basket. Add the desired amount of ground coffee (1 tablespoon of ground coffee per cup is recommended). Close the filter basket cover completely and make sure the carafe is on the heating plate.

NOTE: The maximum capacity for regular ground coffee is 15 tablespoons and 12 tablespoons for decaf. Exceeding this amount may cause overflow.



2 Brew & Enjoy!

Press the **POWER** button. The **POD** and **CARAFE** buttons will blink. Select **CARAFE**, then select your brew size. The brew indicator light will blink when the coffee maker is ready. Press the **BREW** button to initiate brewing.

Once the brew is complete, the heating plate will automatically turn on and remain on for 2 hours - the **CARAFE** button will illuminate red. To turn off the heating plate, press and hold the **CARAFE** button until the light is no longer illuminated.

If you accidentally shut the heating plate off, press and hold the **CARAFE** button until the red light illuminates to turn it back on.

Coffee Maker Features

Smart Start heats then brews in one simple process. No need to wait for the coffee maker to heat before selecting brew size. Power on your coffee maker, add coffee, then select your brew size. The coffee maker will heat, then automatically begin brewing.

Single Cup Auto Off automatically turns your coffee maker off 5 minutes after the last brew for energy savings.

Carafe Auto Off automatically turns your heating plate off 2 hours after the last brew for energy savings.

Auto Brew programs the carafe to brew at a specific time up to 24 hours in advance. See Auto Brew Instructions in this guide or the full Use & Care Guide for instructions.

Strong Brew increases your coffee strength and intensity for a single cup. For bolder coffee, press the **STRONG** button.

High Altitude To ensure your coffee maker works properly at higher altitudes (1,500 metres/5,000 feet), enable the High Altitude setting by pressing and holding the **POD** and **CARAFE** buttons for 3 seconds. When enabled, a mountain icon will appear on the display screen.

Pause & Pour a cup mid-brew while brewing a carafe using the 20-second automatic pause feature.

NOTE: Removing the carafe for more than 20 seconds may cause the filter basket to overflow.

Brew & Pause during a carafe brew by pressing the **CARAFE** button. Press the **CARAFE** button to resume the brew.

Caring for your Coffee Maker

Regular cleaning keeps your coffee maker running smoothly. Always be sure to unplug your coffee maker and allow it to cool before cleaning. For detailed coffee maker cleaning and descale instructions, videos, and the full Use & Care Guide visit Keurig.ca.

If the coffee maker has been in storage, or hasn't been used in days, run a cleansing brew before brewing your beverage.

Periodically **hand-wash** the water reservoir and lid, carafe and lid, and filter basket with warm soapy water, and rinse clean.

CAUTION: Parts are not dishwasher safe.

NOTE: Do not dry the inside of the water reservoir with a cloth as lint may remain.

Descaling

Descale your brewer every 3 months (or if you experience low coffee volume or slower performance). For detailed descale instructions see the Use & Care Guide and Instructional video on Keurig.ca/support_1

Auto Brew Instructions

- Fill the water reservoir to the **MAX** fill line and load the paper filter and coffee grounds.
- Press the **AUTO** button. Use the **H/M** buttons to set the time for auto brew to begin, press the blinking **BREW** button to confirm the time.
- Choose your brew size, then press the blinking **BREW** button to confirm the size.

The AUTO brew setup is now complete. A clock icon will appear on the screen and the AUTO button will be illuminated to signal AUTO is on.

NOTE: Once **AUTO** brew is enabled, you will only be able to brew a single cup. To disable **AUTO** brew, press the **AUTO** button once. The clock icon will disappear from the screen.

Double your first purchase of 48 recyclable* K-Cup® pods

REGISTER YOUR COFFEE MAKER

and receive a coupon code by email for 2 boxes of 24 recyclable* K-Cup® pods FREE with an equal or greater value purchase. Restrictions apply.

*Recyclable in select locations. Visit Keurig.ca/recyclable for more information.

Keurig.ca/Welcome

Have questions? We're here to help. Visit Keurig.ca/Welcome for troubleshooting videos, maintenance recommendations, and the full Use & Care Guide.

Still need help? Give us a call at 1-800-361-5628

*Recyclable in select locations. Visit keurig.ca/recyclable for more information.

DC0000003283 REV D

SCHAWKI

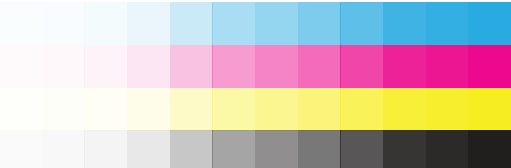
1620 Tech Avenue, Mississauga, ON
L4W 5P4 Canada (905) 219-1600

Please check carefully before using. Although every effort is made to produce the finest possible product, errors do occur. We do not assume any liability beyond the replacement of our product.

Client Name: Keurig Green Mountain
Sales Order: 104068346
Service Order: 401961097
Date: 07/31/2020
Description: K Duo QSG CDN REV D (Eng) QSG

KGM Job #: 8005
Item Part #: DC0000003283 REV D
Buyer: Mona Gandhi
Vendor:
Designer:
CC:
Operator: SB
Project:

Barcode:
Mag:
Bar Width Adj.:
Dieline #:
Line Screen: 150
Print Method: Digital Printing
Printer: GUANGDONG GAOYI PACKING AND PRINTING - DONGGUAN
Printer PO #:
Special Print Processes:



Cyan
Magenta
Yellow
Black

KGM Approval: _____ Date _____

Designer Approval: _____ Date _____

Buyer Approval: _____ Date _____

Proofreader Approval: _____ Date _____

Changes: _____ Date _____