



KEURIG

Let's get brewing.

K-Slim™

SINGLE SERVE COFFEE MAKER

Quick Start Guide

IMPORTANT SAFEGUARDS

When using electrical appliances, basic safety precautions should always be followed, including the following:



1. READ ALL INSTRUCTIONS

- For household use only.
- Do not use distilled water.
- Scalding may occur if the handle is opened during the brewing process.
- Do not touch hot surfaces. Use handles or knobs.
- To protect against fire, electric shock, and injury to persons do not immerse appliance, cord, or plugs in water or other liquid.
- Close supervision is necessary when any appliance is used by or near children.
- Unplug from outlet when not in use and before cleaning. Allow to cool before putting on or taking off parts, and before cleaning the appliance.
- Do not operate any appliance with a damaged cord or plug or after the appliance malfunctions, or has been damaged in any manner. Return appliance to the nearest authorized service facility for examination, repair, or adjustment.

- The use of accessory attachments not authorized by the appliance manufacturer may result in fire, electric shock, or injury to persons.
- Do not use outdoors.
- Do not let cord hang over edge of table or counter, or touch hot surfaces.
- Do not place on or near a hot gas or electric burner, or in a heated oven.
- Always attach plug to appliance first (if not permanently attached), then plug cord into the wall outlet. To disconnect, turn any control to "off" then remove plug from wall outlet.
- Do not use appliance for other than intended use.
- Use coffee maker in upright position only. Allow coffee maker to cool (90 min) prior to turning it in any position other than upright.
- Do not immerse coffee maker in water.

For detailed coffee maker cleaning and maintenance instructions, videos, and the full Use & Care Guide visit keurig.ca.

- WARNING:** Keep all plastic bags away from children.
- CAUTION:** Keurig® recommends using only Keurig® My K-Cup® Reusable Coffee Filter and Keurig® K-Cup® pods in this appliance. If the pod does not fit, do not force the pod into the appliance. The use of non-Keurig® pods or accessories may cause coffee maker malfunction or injury.
- WARNING:** There is extremely hot water under pressure in the K-Cup® pod holder during the brew process. To avoid risk of injury do not lift the handle or otherwise open the handle during the brew process.
- POWER CORD INSTRUCTIONS:**
 - A short power-supply cord is provided to reduce risks resulting from becoming entangled in or tripping over a longer cord.
 - Longer detachable power-supply cords or extension cords are available and may be used if care is exercised in their use.
 - If a long detachable power-supply cord or extension cord is used:
 - The marked electrical rating of the detachable power-supply cord or extension

- If the appliance is of the grounded type, the extension cord should be a Grounding type 3-wire cord.
- The longer cord should be arranged so that it will not drape over the counter top or table top where it can be pulled on by children or tripped over.

- CAUTION: HOT COCOA/OTHER NON-COFFEE PODS:** Immediately after using a hot cocoa/other non-coffee pod, run a Cleansing Brew to avoid the possibility of clogging the exit needle. DO NOT assume the next user will do this.

SAVE THESE INSTRUCTIONS

WARNING
RISK OF FIRE OR ELECTRIC SHOCK DO NOT OPEN

WARNING, TO REDUCE THE RISK OF FIRE OR ELECTRIC SHOCK, DO NOT REMOVE COVER (OR BACK) NO USER SERVICEABLE PARTS INSIDE

Before You Brew



1 Plug & Place

Remove packing tape from coffee maker. Plug into a grounded outlet. Place mug on drip tray.



2 Rinse & Fill

Remove the water reservoir lid, then lift the reservoir straight up to remove it.

Rinse reservoir with fresh water and fill to the **MAX FILL** line.

Replace water reservoir, making sure the lock tabs engage with the coffee maker. Replace lid.

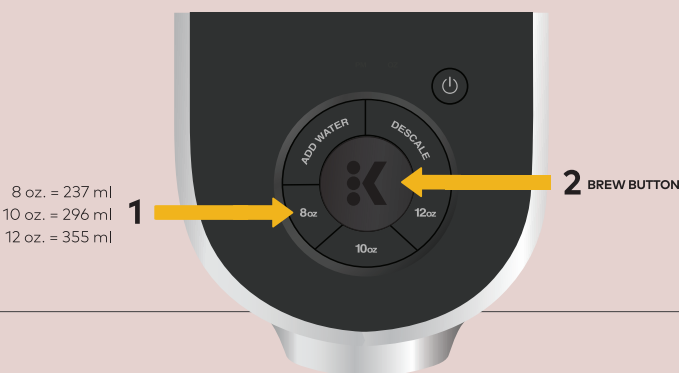
NOTE: Do not use distilled water.

Brew Your First Cup



3 Lift & Lower

Lift and lower the handle. **Do not insert a K-Cup® pod.** The coffee maker will power on automatically.



4 Cleansing Brew

The 3 cup sizes will blink. Press the **8 oz.** button, then press the blinking **brew** button to start a cleansing brew. Pour the hot water into the sink.

The one-time setup process is now complete and you are ready to brew!



5 Place Mug & Pod

Place a mug on the drip tray. If using a travel mug, remove the drip tray and place the mug on the drip tray base. Lift the handle and place a K-Cup® pod in the K-Cup® pod holder. Lower the handle completely to close the lid.

Do not remove the foil lid on the K-Cup® pod.



6 Brew & Enjoy!

The three brew size buttons will blink. Select your brew size, then press the blinking **brew** button. The brew button will remain illuminated while brewing. Brewing is complete when the buttons are no longer illuminated. Lift the handle and recycle the used K-Cup® pod in three easy steps*.

CAUTION: While brewing, there is extremely hot water in the K-Cup® pod holder. To avoid injury, do not lift the handle during the brewing process.

*Recyclable in select locations. Visit keurig.ca/recyclable for more information.

Coffee Maker Features

Smart Start heats then brews in one simple process. No need to wait for the coffee maker to heat before selecting brew size. Power on your coffee maker, place mug, insert a K-Cup® pod, and lower the handle. Then, select your brew size. The coffee maker will heat, then automatically begin brewing.

Auto Off automatically turns your coffee maker off 5 minutes after the last brew for energy savings.

High Altitude To ensure your coffee maker works properly at higher altitudes (1,500 metres/5,000 feet), enable the High Altitude setting by pressing and holding the **brew** button and **8 oz.** button for 3 seconds.

Caring For Your Coffee Maker

Regular cleaning keeps your coffee maker running smoothly. Always be sure to unplug your coffee maker and allow it to cool before cleaning.

Used pod should be removed from the pod holder.

If the coffee maker has been in storage, or hasn't been used in days, run a cleansing brew before brewing your beverage.

Periodically **hand-wash** the water reservoir and lid and drip tray with warm soapy water and rinse clean. Pod holder can be detached from brew chamber for a rinse clean.

For detailed coffee maker cleaning and descale instructions, videos, and the full Use & Care Guide visit keurig.ca.

CAUTION: Parts are not dishwasher safe.

NOTE: Do not dry the inside of the water reservoir with a cloth as lint may remain.

Coffeehouse taste in your own home.

REGISTER YOUR NEW KEURIG® COFFEE MAKER
and receive a special savings offer.
Restrictions apply. See keurig.ca for details.
keurig.ca/welcome

Have questions? We're here to help. Visit keurig.ca/welcome for troubleshooting videos, maintenance recommendations, and the full Use & Care Guide.
Still need help? Give us a call at 1-800-361-5628

DC0000004383 REV A

SCHAWKI

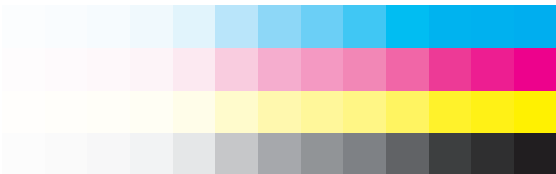
1620 Tech Avenue, Mississauga, ON
L4W 5P4 Canada (905) 219-1800

Please check carefully before using. Although every effort is made to produce the finest possible product, errors do occur. We do not assume any liability beyond the replacement of our product.

Client Name: Keurig Green Mountain
Sales Order: 103145787
Service Order: 401684201
Date: 12/12/2019
Description: K Slim QSG CDN (Eng/Fre) QSG

KGM Job #: 9811
Item Part #: DC0000004383 REV A
Buyer: MONA GANDHI
Vendor:
Designer:
CC:
Operator: SB/GR/RT
Project:

Barcode:
Mag:
Bar Width Adj.:
Dieline #:
Line Screen: 150
Print Method: Offset Printing
Printer: GUANGDONG GAOYI PACKING AND PRINTING - DONGGUAN
Printer PO #:
Special Print Processes:



Cyan
Magenta
Yellow
Black

KGM Approval:	Designer Approval:	Buyer Approval:	Proofreader Approval:	Changes:
Date	Date	Date	Date	Date