

MASTER  
**Chef™**

# HOT WATER DISPENSER

Product no. 043-0196-2



## INSTRUCTION MANUAL

Read this manual thoroughly before using this product and save it for future reference.

Product no. 043-0196-2 | Contact us 1-855-803-9313

## Table of Contents

Important Safeguards	2
Know Your Hot Water Dispenser	6
Before First Use	7
Using Your Hot Water Dispenser	8
Using the Reboil Mode	10
Disposing of Left Over Water	11
Cleaning Your Hot Water Dispenser	12
Descaling Your Hot Water Dispenser	13
Limited Warranty	14

Trileaf Distribution Trifeuil, Toronto, Canada M4S 2B8

## Important Safeguards

### IMPORTANT SAFEGUARDS

When using electrical appliances, basic safety precautions should always be followed to reduce the risk of fire, electric shock and/or injury to persons, including the following:

1. **READ ALL INSTRUCTIONS CAREFULLY.**
2. Do not touch hot surfaces. Do not close or clog the steam vent opening under any circumstances. The handles and knobs are provided for your safety and protection.
3. To protect against fire, electric shock and injury to persons, do not immerse cord, plug or appliance in water or any other liquid.
4. This appliance is not intended for use by persons (including children) with reduced physical, sensory, or mental capabilities, or lack of experience and knowledge, unless they are closely supervised and instructed concerning use of the appliance by a person responsible for their safety. Close supervision is necessary when any appliance is used by or near children. Children should be supervised to ensure that they do not play with the appliance.
5. Allow the appliance to cool before adding or removing parts, and before cleaning the appliance.
6. Do not operate any appliance with a damaged cord or plug, or after the appliance malfunctions or has been dropped or damaged in any manner. If this does occur, call the MASTER Chef® customer service team at 1-855-803-9313 for assistance.
7. The use of accessory attachments not recommended by the appliance manufacturer may result in fire, electric shock or injury to persons.
8. Do not use outdoors.
9. Do not let the cord hang over the edge of the table or counter, or touch hot surfaces, including the stove.

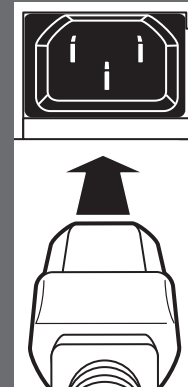
10. Do not place on or near a hot gas or electric burner, or in a heated oven.
11. To disconnect, lift power switch to "OFF", then remove plug from wall outlet.
12. Extreme caution must be used when moving this appliance containing hot water.
13. Always close the lid of the hot water dispenser when in use. Scalding may occur if the lid is lifted or removed during the boiling cycle.
14. Do not use the appliance for anything other than the intended use.
15. Do not clean unit with scouring powders, steel wool pads, or other abrasive materials.
16. Do not twist, kink or wrap the power cord around the appliance as this may cause the insulation to weaken and split, particularly in the location where it enters the unit.
17. **Never leave the appliance unattended while it is plugged into an outlet.**

## SAVE THESE INSTRUCTIONS HOUSEHOLD USE ONLY

### POWER CORD INSTRUCTIONS



1. A short power-supply cord is provided to reduce the hazard resulting from entanglement or tripping over a long cord.
2. Extension cords may be used if care is exercised. If it is necessary to use an extension cord, it should be positioned so that it does not drape over the counter or tabletop where it can be pulled on by children or tripped over unintentionally.
3. The electrical rating of the extension cord must be the same or more than the wattage of the appliance (the wattage is shown on the rating label located on the underside or back of the appliance).
4. Use only a 3-wire extension cord with a 3-prong grounded plug.
5. Avoid pulling or straining the power cord at outlet or appliance connections.



### GROUNDING PLUG



1. This appliance is equipped with 3-wire cord having a grounded plug.
2. To reduce the risk of injury, this plug must be inserted into a properly installed and grounded outlet.
3. Do not attempt to defeat this safety feature by modifying the plug in any way.

**WARNING: Improper use of the power cord may result in the risk of electric shock. Consult a qualified electrician if necessary.**

Product no. 043-0196-2 | Contact us 1-855-803-9313



## WARNING:

1. Do not attempt to disassemble, repair, or modify the product. Repairs should only be performed by a qualified service representative.
2. Use only a 120V AC power source. Use of any other power supply voltage may result in fire or electric shock.
3. Use an electrical outlet rated 15A or higher and do not plug in other devices at the same time.
4. Do not damage or use a damaged power cord. Do not forcefully bend, twist, fold or modify the cord. Do not place near high temperature surfaces or under/ between heavy objects.
5. Wipe the plug thoroughly in case dust or other foreign objects are collected.
6. Firmly insert the plug into the outlet to avoid electric shock, shorting, smoke or fire.
7. Do not use the product if the power cord or plug is damaged or the plug is loose in the outlet to avoid electric shock, shorting, or fire.
8. Do not plug in or unplug with wet hands.
9. Do not exceed the max water level mark level. If spillage or overflowing occurs, it could cause scalds.
10. Do not attach the lid forcefully.
11. Do not block the steam vent with a cleaning cloth or any other items.
12. Do not insert or boil anything other than water.
13. Do not use as an ice cooler.
14. Do not remove the lid while the water is boiling.
15. Do not hold the main unit close to your body, tilt or rock it, or shake vigorously.
16. Do not tip over the appliance.
17. Do not immerse the appliance in water, or pour water into the appliance.
18. Do not discard remaining hot water with the lid closed. This is to avoid scalds due to hot water spillage if the lid were to come off.
19. If the lid gasket changes colour or is damaged, be sure to replace it. If not replaced, water may spill if tipped over—potentially causing scalds.

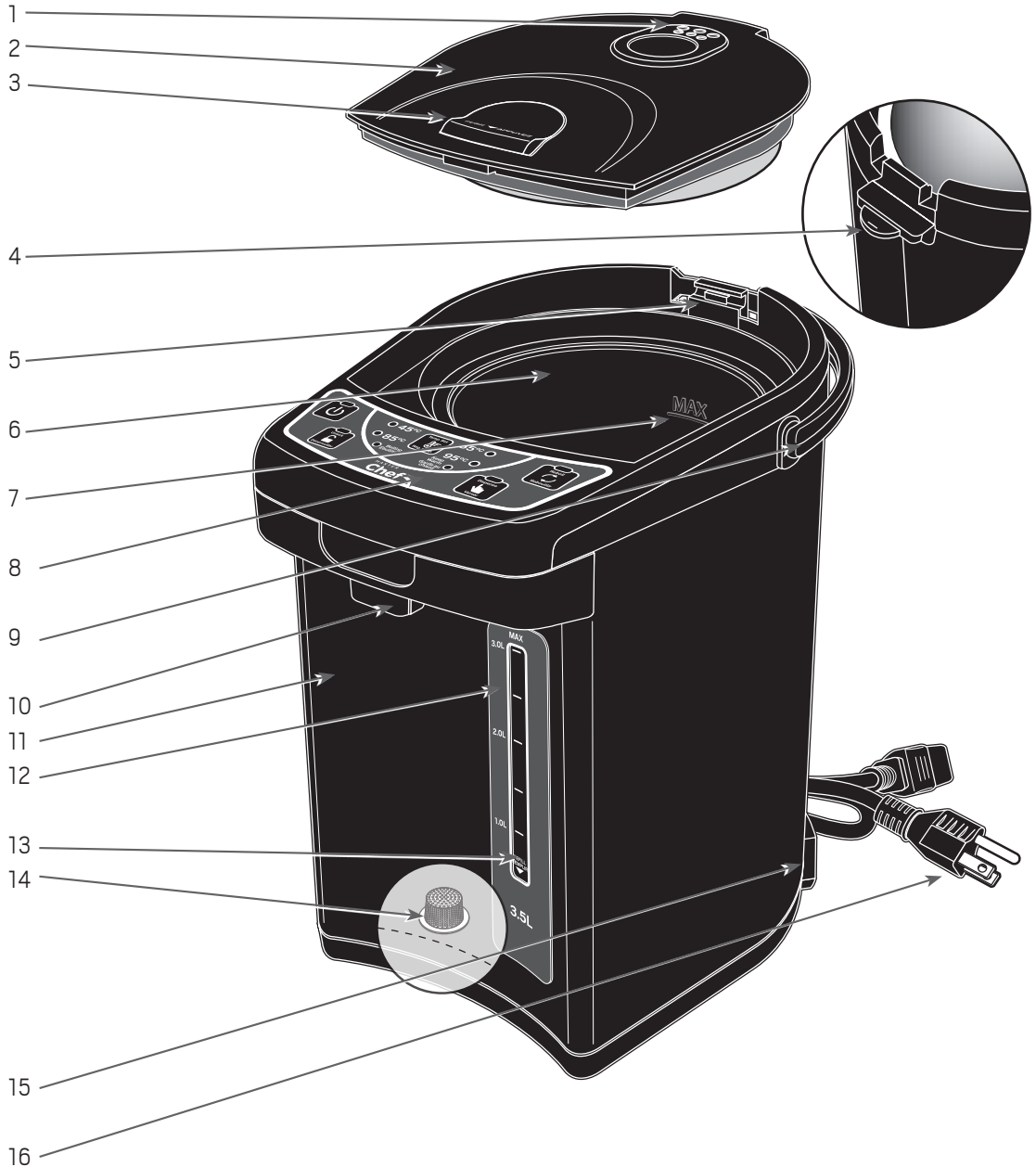
**CAUTION:**

1. Unplug power cord when not in use. This is to avoid injury, scalding, electric shock, or fire caused by a short-circuit.
2. Be sure to firmly hold the plug when removing from an outlet to avoid electric shock, shorting, or fire.
3. Use only the power cord which is included with this product.
4. Do not use near the wall or furniture.
5. Do not come in contact with steam or condensation when opening or removing the lid to avoid scalding.
6. Do not dispense hot water or move the main unit while the water is being boiled.
7. Wait until the appliance has cooled down before performing maintenance.



Product no. 043-0196-2 | Contact us 1-855-803-9313

# Know Your Hot Water Dispenser



RATING: 120 V, 60 Hz, 750 W, AC ONLY

1		Steam Vent
2	*	Upper Lid
3		Lid Lock
4		Attach/Remove Lever
5		Hinge
6		Inner Container
7		Maximum Water Level Line
8		Control Panel

9		Handle
10		Spout
11		Body
12		Water Level Gauge
13		Refill Line
14	*	Removable Filter
15		Receptacle
16	*	Power Plug

\* Indicates that this part is available for replacement. Call 1-855-803-9313 for ordering details.

Carefully unpack the hot water dispenser and remove all packaging materials. To remove any dust that may have accumulated during packaging, rinse the interior of the jug with warm water.



**WARNING:** DO NOT IMMERSE THE HOT WATER DISPENSER, CORD OR PLUG IN WATER OR ANY OTHER LIQUID. DO NOT USE HARSH DETERGENTS OR ABRASIVE CLEANSERS.



**IMPORTANT:** USE ONLY COLD WATER FOR HEATING.

Before First Use

Product no. 043-0196-2 | Contact us 1-855-803-9313

1. To open your hot water dispenser lid, push and lift lid opening lever to open the lid (fig. 1).
2. Fill water with a separate container. Fill water to level between "MAX" and "REFILL" as shown on the water level indicator.
3. To monitor the amount of water as you are filling, look at the thickness of the stripes on the water level gauge (fig. 2).
4. Close the lid securely.



**WARNING:** DO NOT USE THE HOT WATER DISPENSER WITHOUT THE FILTER. The filter prevents foreign objects from entering. If not installed, objects may enter, causing the pump to not dispense. Water will not flow smoothly as a result.



**NOTE:** Do not fill water directly from a water faucet or place the product on a wet surface.



**NOTE:** If the lid is not closed securely, hot water may spill and cause scalding.

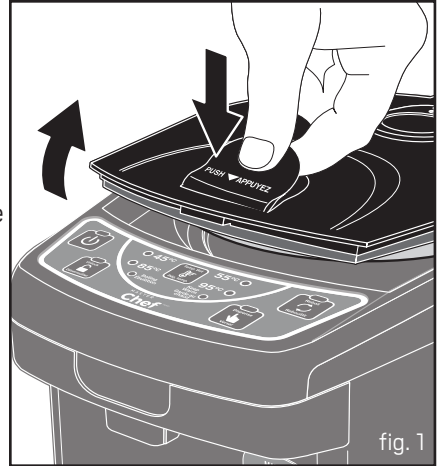


fig. 1

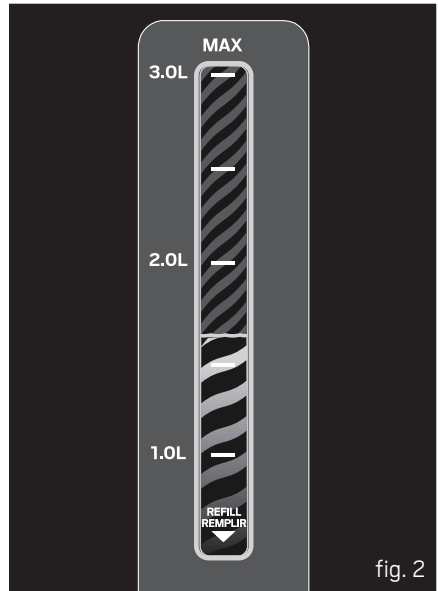
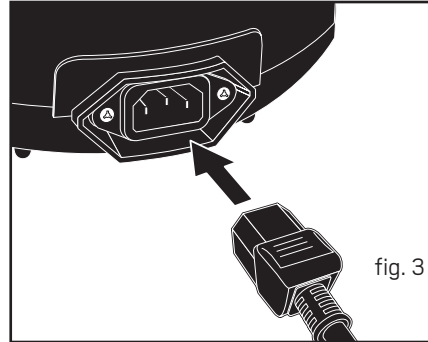


fig. 2



5. Connect the power cord (fig. 3), and plug into a grounded working 120V, 60Hz, AC-only outlet. The red power light will be flashing.
6. Press the Power On button (⏻) to turn on the hot water dispenser. It automatically starts the boiling process. The green Boiling light and the red Reboil light will illuminate, and the green 95°C light will flash.
7. When the boiling has completed, the dispenser automatically switches to Keep Warm mode and the green Keep Warm light will then illuminate.
8. To dispense hot water, press the UNLOCK button and the red UNLOCK light will illuminate. Press the Dispense button to dispense hot water; the green Dispense light will illuminate while pressing the Dispense button.



**NOTE:** 10 seconds after dispensing, the UNLOCK light turns off and the Automatic Dispense Lock is activated. A safety function is in place to prevent hot water from dispensing if the Dispense button is accidentally pressed.



**CAUTION: DO NOT ATTEMPT TO DISPENSE HOT WATER WHILE BOILING.**

1. This function is used when reboiling water in the Keep Warm Mode.



**NOTE:** MAKE SURE THE WATER LEVEL IS ABOVE THE REFILL LINE BEFORE PRESSING THE REBOIL BUTTON.

2. Press the Reboil button. The red Reboil light and the green Boiling light will illuminate, and the light of the previous selected temperature will flash. Alternatively, select your desired temperature by pressing the Temp. Set button.
3. When the reboiling has completed, the dispenser will automatically switch to Keep Warm mode. The green Keep Warm light will illuminate.

1. Dispose of left over water when the hot water dispenser is not in use.



**CAUTION:** DO NOT ATTEMPT TO DISPOSE OF LEFT OVER WATER WHEN THE WATER IS STILL HOT.

2. Unplug the power cord and detach the lid.
3. Located at the back of the unit is an attach/remove lever. While pressing down the attach/remove lever in the back, push and lift the lid opening lever then remove the lid by pulling the lid toward the spout as illustrated in fig. 4.
4. When discarding remaining water, make sure to discard in the direction illustrated in fig. 5. If discarded from any other location, water may get inside the main unit and cause scalding or malfunctioning of the appliance.
5. Make sure water does not splash onto the control panel. The spout must face upward. Do not splash water over the hinge area.
6. Re-attach the lid by pressing down on the attach/remove lever and inserting the lid as illustrated in fig. 6.

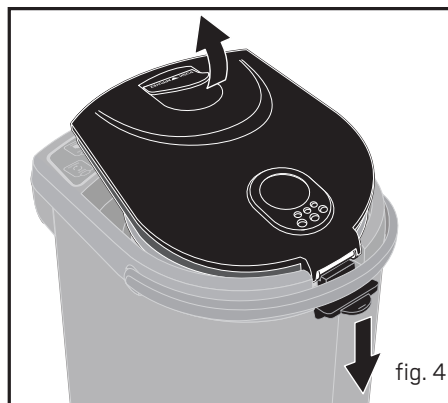


fig. 4

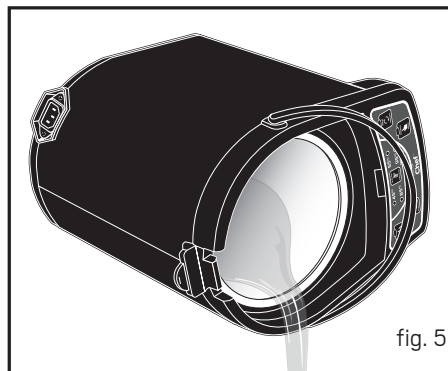


fig. 5

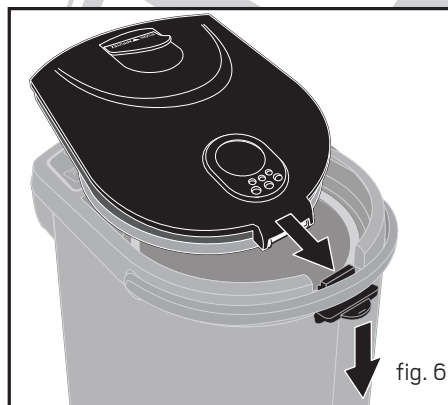


fig. 6

When the hot water dispenser is unplugged and cool, wipe the exterior of the hot water dispenser with a soft, damp cloth or sponge. Remove stubborn spots with a cloth moistened with a mild liquid detergent. Do not use abrasive scouring pads or powders. Never immerse the hot water dispenser, base, cord or plug in water or any other liquid.

Depending on the hardness of your water supply and how often you use the hot water dispenser, a limescale deposit may form and adhere to the heating element. This reduces the hot water dispenser's heating capacity. Limescale is not harmful to your health but may give beverages an unpleasant appearance or taste. Directions for descaling are on page 13.



**WARNING:** YOUR HOT WATER DISPENSER HAS BEEN DESIGNED FOR BOILING WATER ONLY. BOILING ANY OTHER LIQUID CAN CAUSE SEVERE DAMAGE TO THE HOT WATER DISPENSER AND POSSIBLE PERSONAL INJURY. BOILING ANY OTHER LIQUID WILL ALSO VOID THE WARRANTY.

Rinse thoroughly with water and wipe the inside liner with a clean sponge or paper towel.

Remove the filter from the inner container and wash with a soft brush (fig. 7).

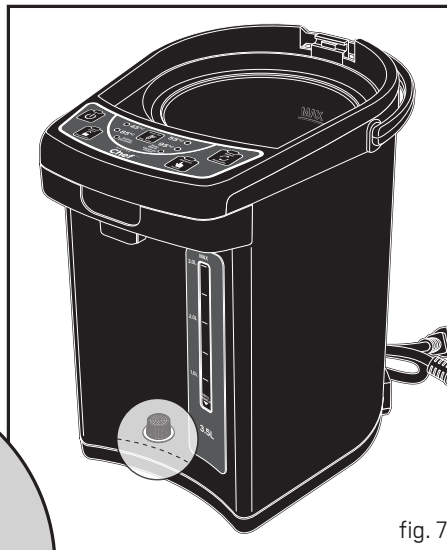
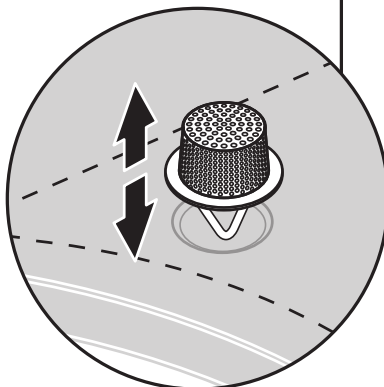


fig. 7



Your hot water dispenser should be descaled on a monthly basis to extend the life of the hot water dispenser, maintain energy efficiency and ensure a clean appearance.

1. Fill the hot water dispenser up to the “MAX” level with a mixture of one part white vinegar and two parts water. Unplug the base from the outlet.
2. Let the mixture remain inside the hot water dispenser overnight.
3. Throw the mixture away the next morning.
4. Fill the hot water dispenser with clean, cold water up to the “MAX” level, plug in base and bring to a boil.
5. Discard this boiled water and any remaining scale and vinegar.
6. Rinse the inside of the hot water dispenser with clean water.
7. The hot water dispenser is now ready to be used.



**NOTE:** For tough limescale buildup, we recommend purchasing and using a specialized descaling cleaning product. Be sure to follow steps 4 and 5 above several times after using, to remove any excess residue.



**NOTE:** Filters must be replaced if damaged or showing signs of wear and tear. Call 1-855-803-9313 for ordering details.



**IMPORTANT:** FAILURE TO PROPERLY MAINTAIN YOUR WATER DISPENSER BY DESCALING IT AS OUTLINED IN THIS MANUAL WILL AUTOMATICALLY VOID THE WARRANTY.



**NEVER LEAVE APPLIANCE UNATTENDED WHILE IN USE.**

Product no. 043-0196-2 | Contact us 1-855-803-9313

## Limited Warranty

### 1-YEAR LIMITED WARRANTY

This product carries a one (1) year warranty against defects in workmanship and materials. Trileaf Distribution agrees to replace a defective product free of charge within the stated warranty period, when returned by the original purchaser with proof of purchase. This product is not guaranteed against wear or breakage due to misuse and/or abuse.

For assistance regarding this appliance, please call the MASTER Chef® Customer Service team at 1-855-803-9313.

Made in China

Imported by

Trileaf Distribution Trifeuil Toronto, Canada M4S 2B8



MASTER  
Chef™

