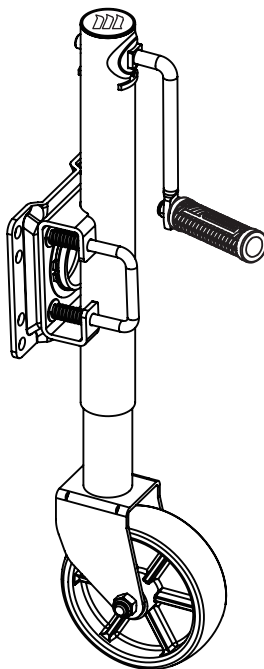




MOTOMASTER

SWING AWAY TRAILER JACK



model no. 040-6927-4

IMPORTANT:

Please read this manual carefully before using this trailer jack and save it for future reference.

**INSTRUCTION
MANUAL**



Read and understand this instruction manual thoroughly before using the product. It contains important information for your safety as well as operating and maintenance advice.

Keep this instruction manual for future use. Should this product be passed on to a third party, this instruction manual must be included.

This MotoMaster® product carries a one (1) year warranty against defects in workmanship and materials. At its discretion, MotoMaster Canada agrees to have any defective part(s) repaired or replaced free of charge, within the stated warranty period, when returned by the original purchaser with proof of purchase. This product is not guaranteed against wear or breakage due to misuse and/or abuse.



TABLE OF CONTENTS

Safety Information	4
Introduction	4
Safety Information	4
Personal Safety Instructions	5
Technical Specifications	5
Assembly	6
Maintenance	7
Parts List and Diagram	8

INTRODUCTION

The MotoMaster® Swing Away Trailer Jack is great for stabilizing and levelling travel trailers when parked. The strong rolled-steel construction of this jack lifts up to 1000 lb (454 kg) hassle-free, easily mounts to the trailer tongue and easily folds away when travelling. This strong jack lifts most trailers and keeps the cargo secure and level on uneven terrain.

SAFETY INFORMATION

- Trailer tongue weight (TW) is the downward pressure that the trailer coupler places on the hitch ball. Usually, TW is about 10% of the gross trailer weight (GTW). GTW is the weight of the trailer when fully loaded. Only use a trailer jack that has a capacity that matches or exceeds the trailer tongue weight (TW). Do not exceed this trailer jack's 1000 lb (454 kg) maximum capacity.
- When assembling and setting up the trailer jack, the trailer must be on a flat, solid surface.
- The trailer jack is designed to be mounted to the trailer's tongue and is used when hitching and unhitching the trailer's hitch from the vehicle. With the attached wheel, this design allows for short distance positioning of the trailer. Use of the trailer jack for operations other than those intended could result in serious personal injury and property damage. The trailer jack is not for aircraft applications.
- Frequently check and maintain the trailer jack. Check for loose hardware, misalignment or binding of moving parts and damage to components. If the trailer jack needs servicing, it should only be performed by a qualified service technician.
- Chock trailer wheels when setting up this product and when using the trailer jack to raise or lower the trailer tongue.
- Keep clear of the underside of trailer, and a safe distance from the trailer jack when raising or lowering the load and when repositioning the trailer.
- Trailer jack must be locked in vertical position before the load is applied. Before moving the trailer, the trailer jack must be secured properly in its horizontal position.
- The trailer must be on a solid, level surface when the trailer dolly is used for short distance re-positioning. Take safety precautions to prevent unsafe movement of the trailer when it is being re-positioned. People and animals are not to be in the trailer while it is being re-positioned.
- Always wear ANSI-approved safety glasses when mounting and using the trailer jack. Keep spectators and children away when using the trailer jack.
- Be aware of the danger of "dynamic loading". This situation arises when a load is dropped onto the trailer jack, resulting in a short-term excessive load. Dynamic loading can result in damage and failure of the trailer jack and/or trailer tongue and personal injury to the person using the trailer jack.
- If trailer jack is used on a boat trailer, never disconnected the trailer from vehicle and use the trailer jack to maneuver the boat down a boat ramp.



PERSONAL SAFETY INSTRUCTIONS

- It is the owner and/or operator's responsibility to read and understand all WARNINGS and operating instructions contained on the product labels and instruction manual prior to operation of this product.
- It is also the owner and/or operator's responsibility to periodically inspect and maintain this product and labels in good working order.

TECHNICAL SPECIFICATIONS

Model	040-6927-4
Capacity:	1000 lb (454 kg)
Lift range:	12 ½–23" (31.8–58.4 cm)
Net weight:	13 lb 2 oz (5.9 kg)
Travel:	10 1/2" (26.7 cm)
Fits trailer tongues:	Up to 3" (7.6 cm) wide
Bolt-on installation hardware:	Included



DANGER!

Potential hazard that will result in serious injury or loss of life.



WARNING!

Potential hazard that could result in serious injury or loss of life.



CAUTION!

Potential hazard that may result in moderate injury or damage to equipment.

ASSEMBLY

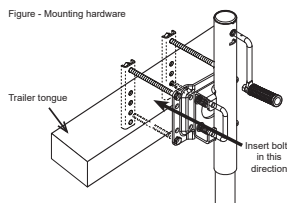
- Assemble wheel (23): Position the wheel inside the fork of the inner tube (21). Secure wheel in place with axle bolt (22), bushing (34) and lock nut (24).
- Attach handle grip (30) to handle (12) with Bolt (31) and nut (32).

INSTALLATION

- Plan carefully where the trailer jack is to be mounted. It is designed to mount to the side of the trailer tongue. The beam of the tongue must be rectangular or square. This trailer jack will fit up to 3" (7.6 cm) wide trailer tongues. The trailer jack's swivel plate (6) has various mounting configurations and can be mounted either vertically or horizontally against the trailer tongue.
- Do not attempt to modify the trailer tongue. Making changes or drilling holes in the trailer tongue could result in failure of this component.
- Never mount the trailer jack on a cylindrical trailer tongue. The swivel plate and back plates (29) will only mount properly on a rectangular or square tongue beam.

- When planning the location of the trailer jack, take into account that the trailer jack will swing upward to a horizontal position and allow room for this. Make sure that the trailer jack will not interfere with the trailer or vehicle when turns are made or when the trailer travels over speed bumps or up and down boat ramps.
- The best way to install the trailer jack is when the trailer is attached to the tow vehicle and both are located on a flat, level solid surface.
- The trailer jack is heavy. You will need assistance to properly mount this product to the trailer tongue. If you are not accustomed to doing this type of work, the trailer jack should be set up by a qualified service technician.
- See mounting hardware below.

Figure - Mounting hardware



Note: Pull up on the lock handle (11) to disengage the swivel plate (6) so it can be moved to vertical or horizontal position.

- Attach the trailer jack to the trailer tongue by securing swivel plate to the two back plates. Use mounting hardware set (25, 26, 27, 28). With the trailer jack in place, fine-tune its position by using a mallet to lightly tap it into the ideal position. Now firmly tighten all hardware.
- Now test the trailer jack. Crank the handle (12) to raise (clockwise) and lower (counter-clockwise) the trailer jack. Make sure the wheel (23) can be lowered to



WARNING!

DO NOT exceed 1000 lb (454 kg) capacity.

NOTE:

Use a rubber mallet to ensure snug connection of all nonmetal parts.

the ground. Pull the lock handle (11) to disengage the swivel plate (6) so that the trailer jack can be moved to the up (horizontal position). Engage the lock handle with the trailer jack in both the vertical and horizontal positions to make sure the trailer jack locks in place. Make any needed adjustments and go back and check again that all hardware is securely tightened.

NOW YOUR TRAILER JACK IS READY FOR USE.

MOUNT TRAILER TO YOUR VEHICLE :

- Rotate the handle (12) clockwise to raise the trailer tongue to a level slightly above the tow vehicle's hitch. Move trailer so that the trailer's hitch is directly over the tow vehicle's hitch ball.
- Turn the handle counter-clockwise to lower the tongue hitch onto the vehicle's hitch ball. Secure the trailer with the hitch retainer.
- Keep turning the handle counter-clockwise to fully retract the trailer jack.
- Pull the lock handle (11) and swing the trailer jack to the up, horizontal position. Align holes in swivel plate (6) and push lock handle back in place to secure trailer jack in this up position before moving the trailer. Always attach safety chains.

DISMOUNT THE TRAILER :

- Chock wheels of trailer.
- Pull on lock handle (11) and swing the trailer jack down to the vertical position. Align holes in swivel plate (6) and push

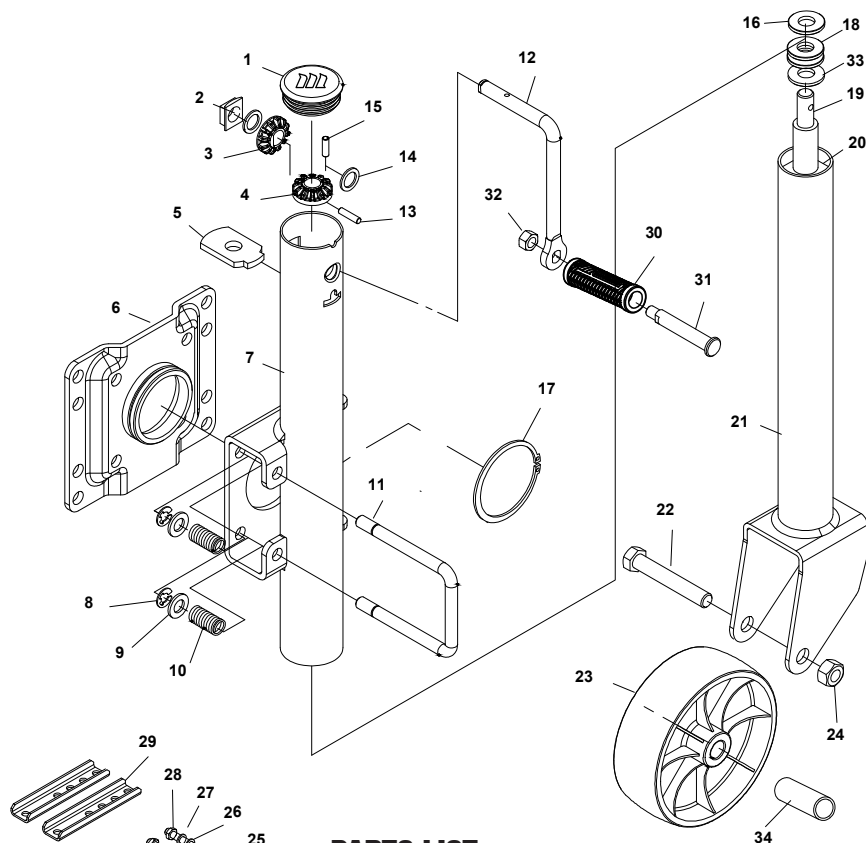
lock handle back in place to secure trailer jack in this position.

- Turn the handle (12) clockwise to raise the trailer jack so that the wheel (23) touches the ground. Then raise the trailer jack slightly so that the weight of trailer tongue is supported by the trailer jack. This will make it easier to disconnect the tongue hitch.
- Disconnect safety chains and any electrical wiring connecting the trailer to the tow vehicle. Chock the trailer jack wheel (23).
- If needed, raise the trailer jack slightly so the trailer tongue hitch completely clears the hitch ball then disconnect the trailer.
- Carefully drive the vehicle away from the trailer.

MAINTENANCE

- Frequently check to make sure all hardware is tight.
- Inspect the trailer jack periodically for cracked or broken components. Do not continue to use the trailer jack if damage is noted.
- Frequently check the lock handle (11) and related springs and retaining rings. Check to make sure that lock handle engages properly and that it will properly lock the trailer jack in the up and down position.
- Grease all moving components.
- Check the wheel to ensure good condition.
- Lightly lubricate the axle bolt (22).

model no. 040-6927-4

**PARTS LIST**

No.	DESCRIPTION	Qty.	No.	DESCRIPTION	Qty.
1	Plastic cover	1	18	Bearing	2
2	Bushing	1	19	Screw rod	1
3	Gear	1	20	Nut	1
4	Gear	1	21	Inner tube	1
5	Bracket	1	22	Bolt	1
6	Swivel plate	1	23	Wheel	1
7	Outer tube	1	24	Luck nut	1
8	Retaining ring	2	25	Bolt	4
9	Washer	2	26	Flat washer	4
10	Spring	2	27	Spring washer	4
11	U-shaped handle	1	28	Nut	4
12	Jack handle	1	29	Connecting plate	2
13	Pin	1	30	Handle grip	1
14	Washer	1	31	Bolt	1
15	Spring pin	1	32	Nut	1
16	Washer	1	33	Washer	1
17	Retaining Ring	1	34	Bushing	1

MADE IN CHINA

IMPORTED BY
MOTOMASTER CANADA
TORONTO, CANADA M4S 2B8